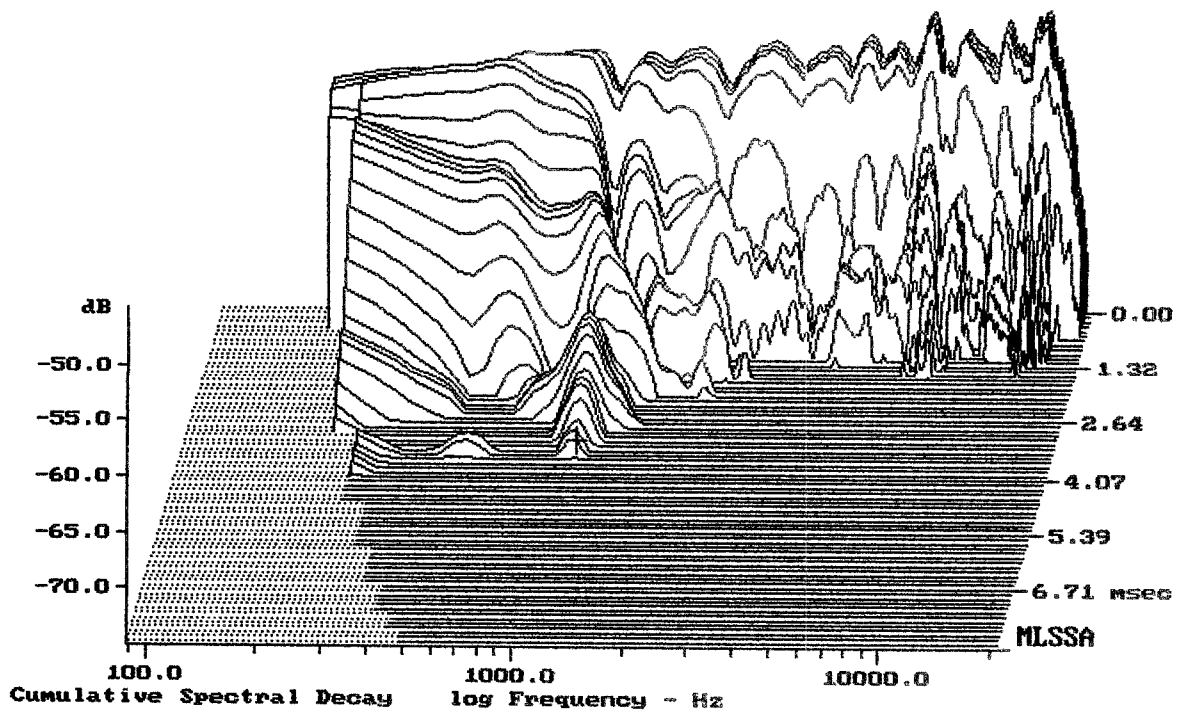


mean: 102.85, rms: 103.02, std: 1.60, max: 106.15, min: 96.05

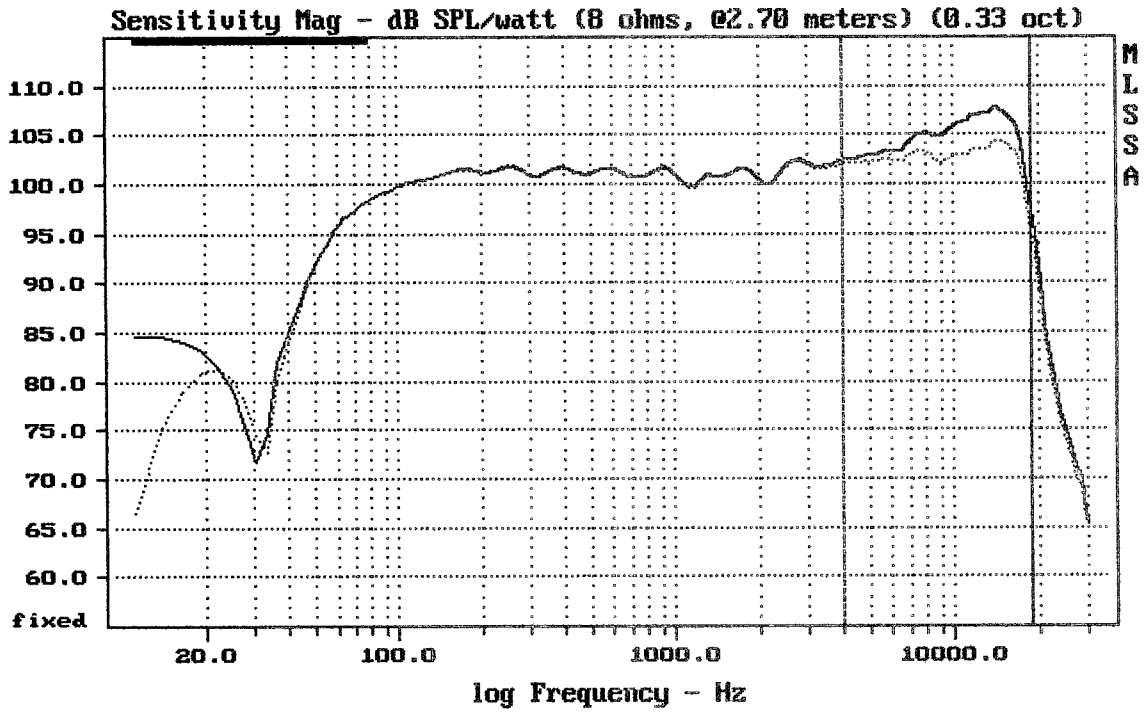
Megaton ND314

MLSSA: Frequency Domain



-73.74 dB, 1065 Hz (24), 3.520 msec (33)

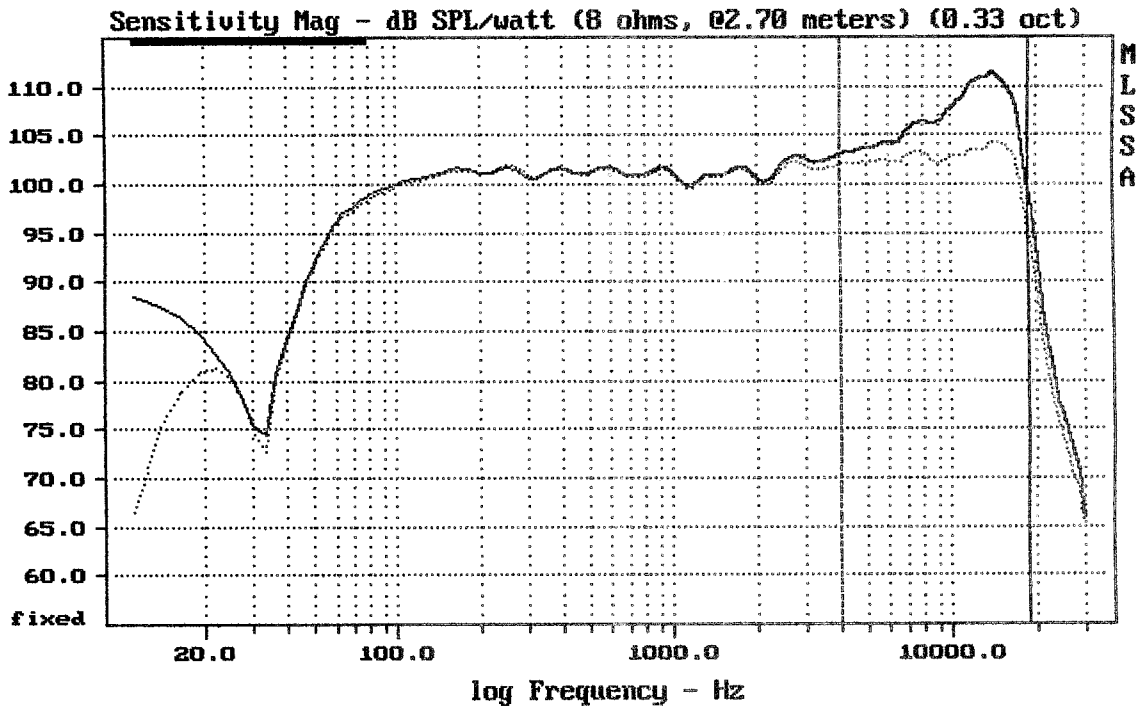
DTTO



Overlay Compare: dev= +1.2/-2.2, std= 1, avg= 2.5

Megaton ND314 + DSP preset NEAR ... / 20m —

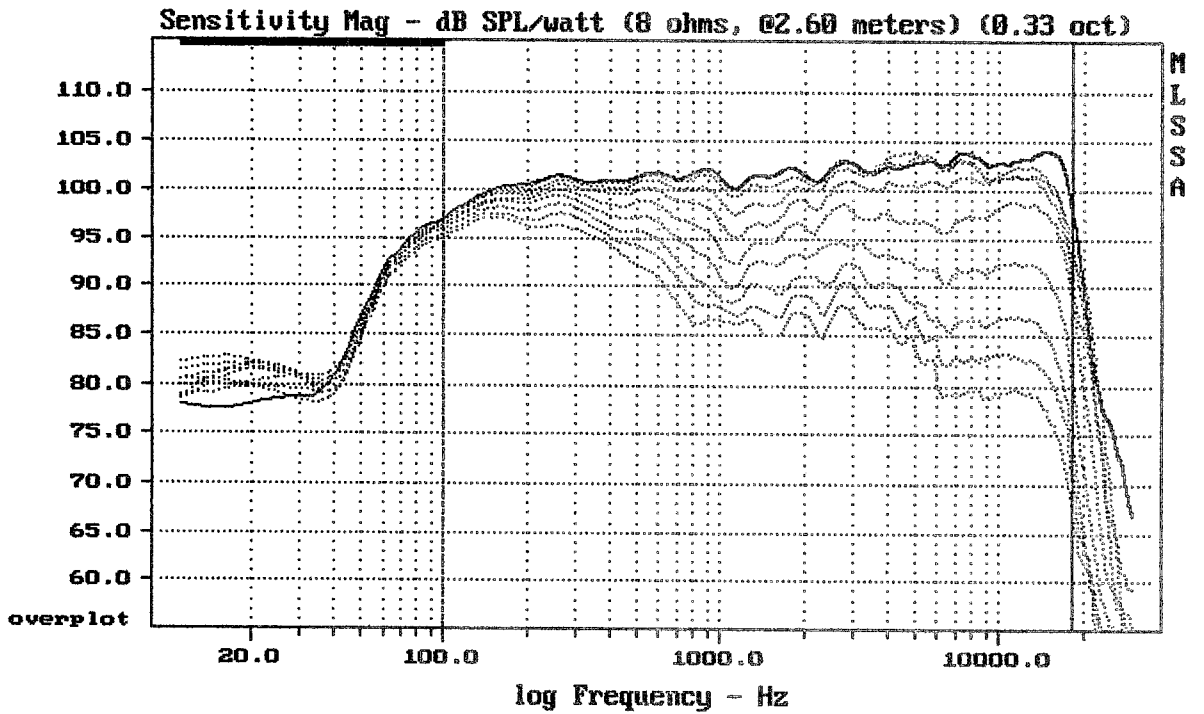
MLSSA: Frequency Domain



Overlay Compare: dev= +2.6/-3.7, std= 2, avg= 4.7

Megaton ND314 + DSP preset NEAR ... / 35m —

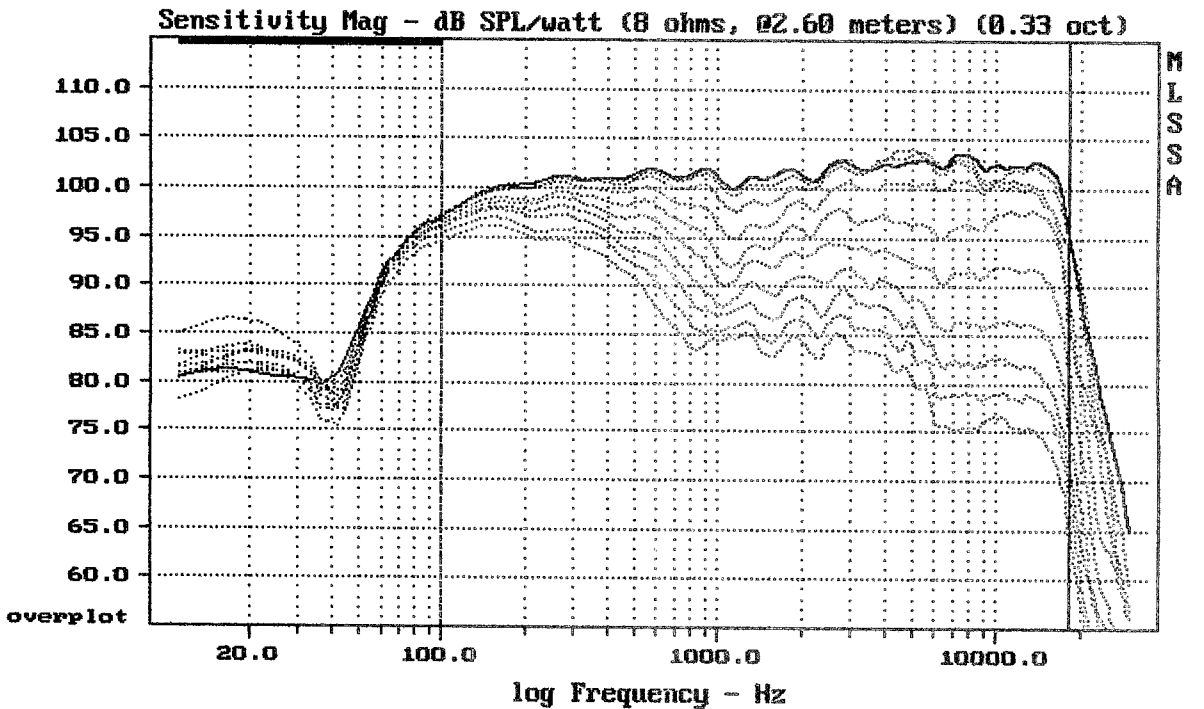
MLSSA: Frequency Domain



Overlay Compare: dev= +20/-8.3, std= 5.3, avg= -22

Megaton ND314 horizontal proti horne

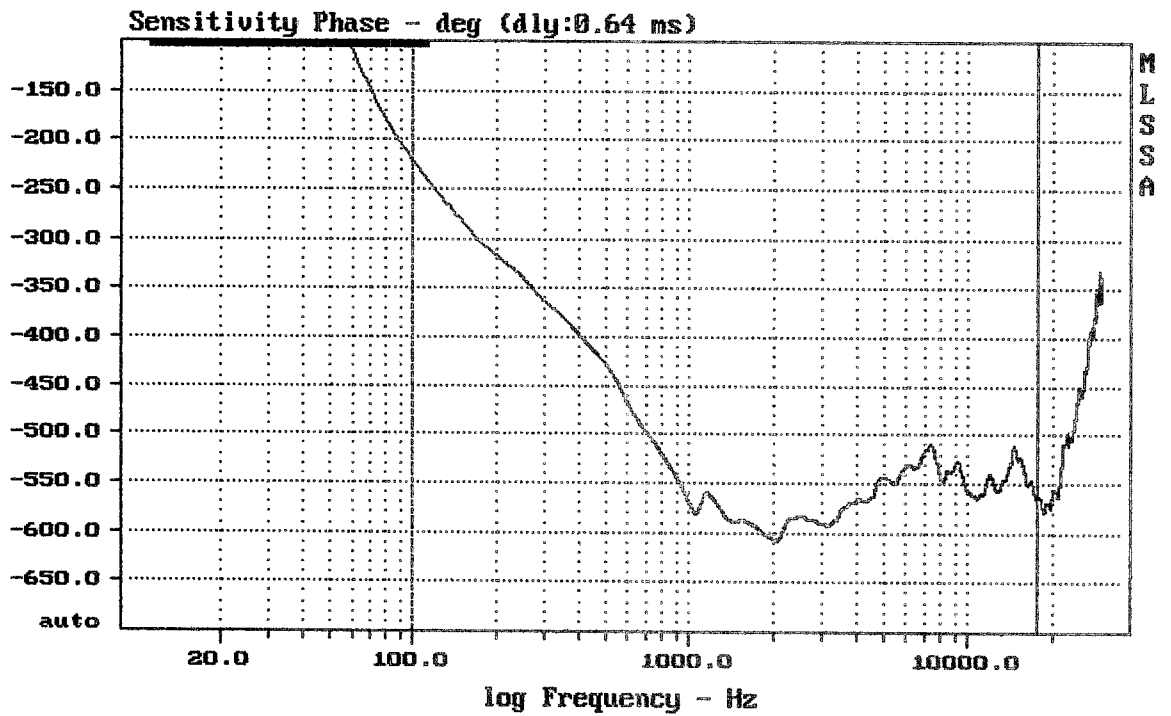
MLSSA: Frequency Domain



Overlay Compare: dev= +22/-6.5, std= 5.1, avg= -25

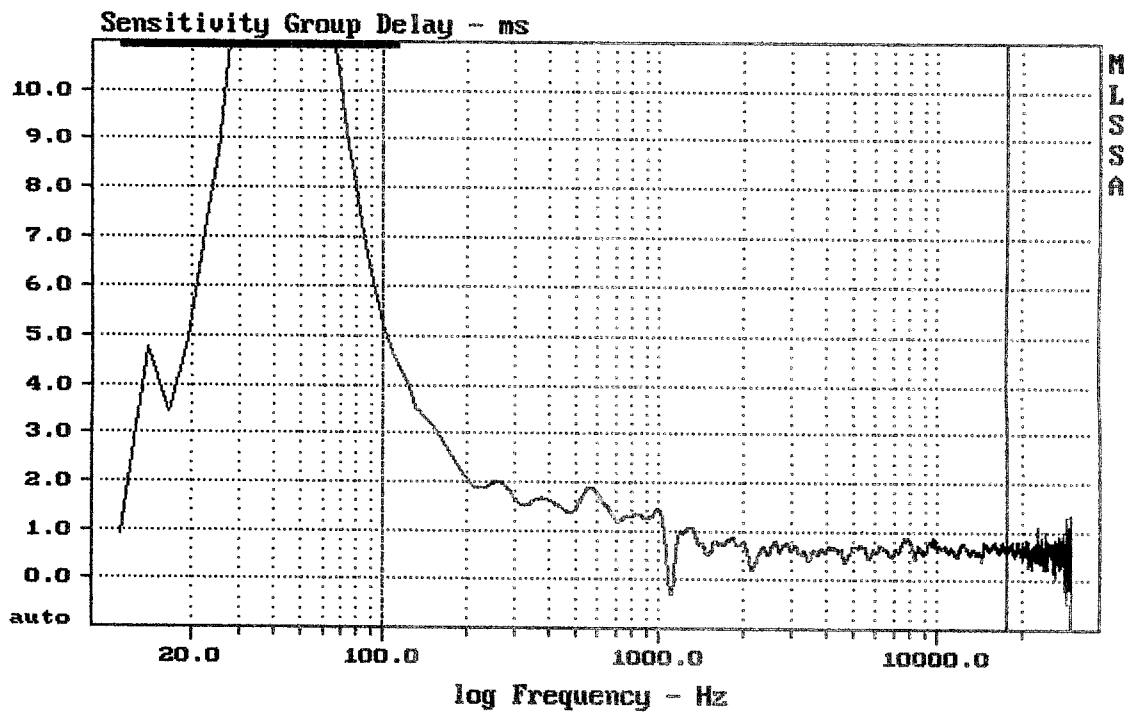
Megaton ND314 horizontal mezi hornou a 14°

MLSSA: Frequency Domain



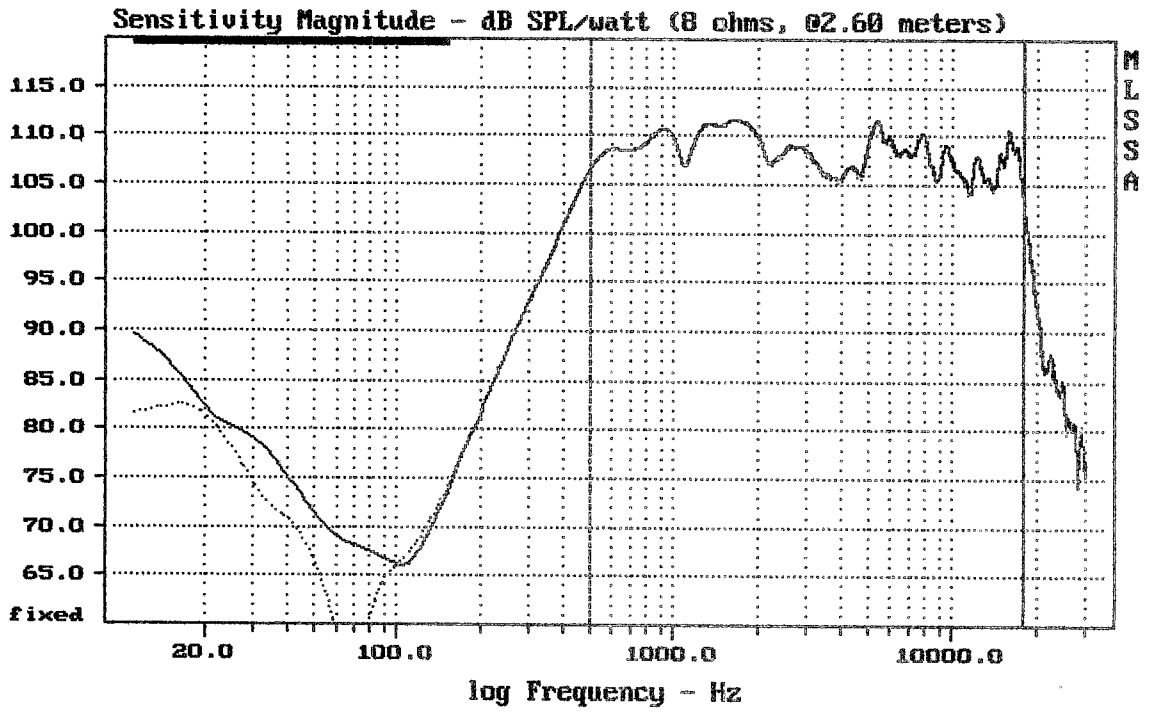
Megaton ND314

MLSSA: Frequency Domain



Megaton ND314

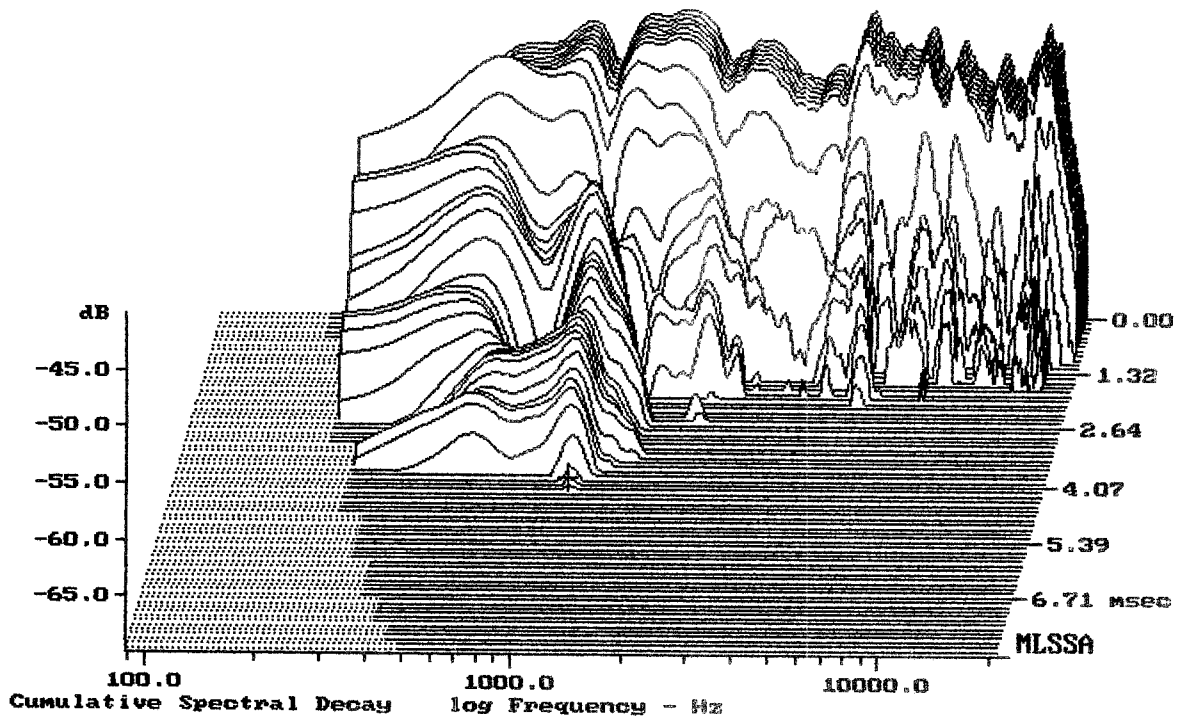
MLSSA: Frequency Domain



Level (499:18000 Hz) = 108.69 dB SPL/watt (8 ohms, @2.60 meters)

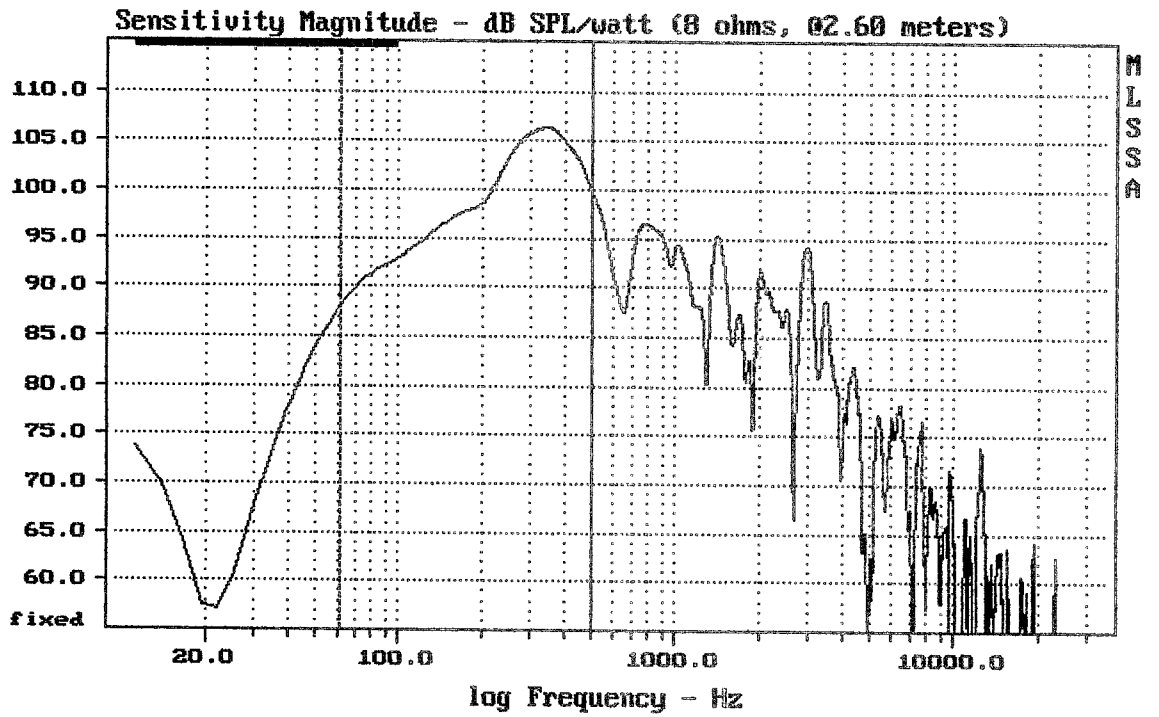
Megaton ND314

MLSSA: Frequency Domain



-69.40 dB, 1065 Hz (24), 4.070 msec (38)

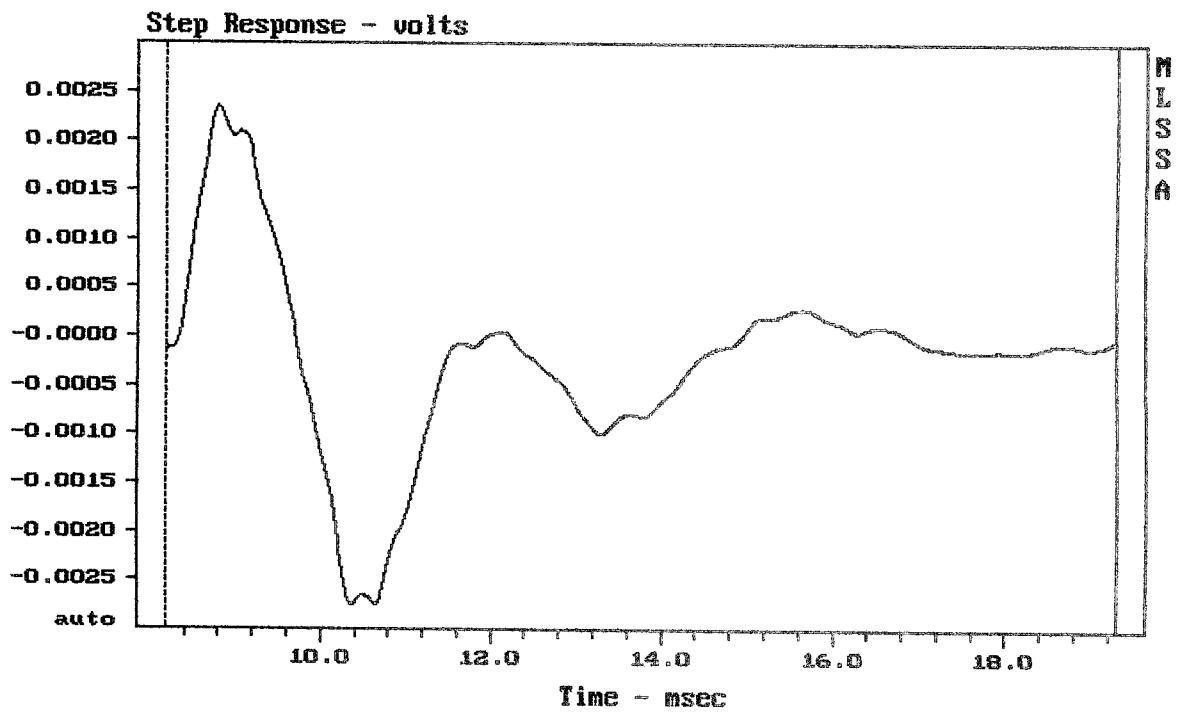
DITO



Level (61:502 Hz) = 101.20 dB SPL/watt (8 ohms, 02.60 meters)

Megaton ND314

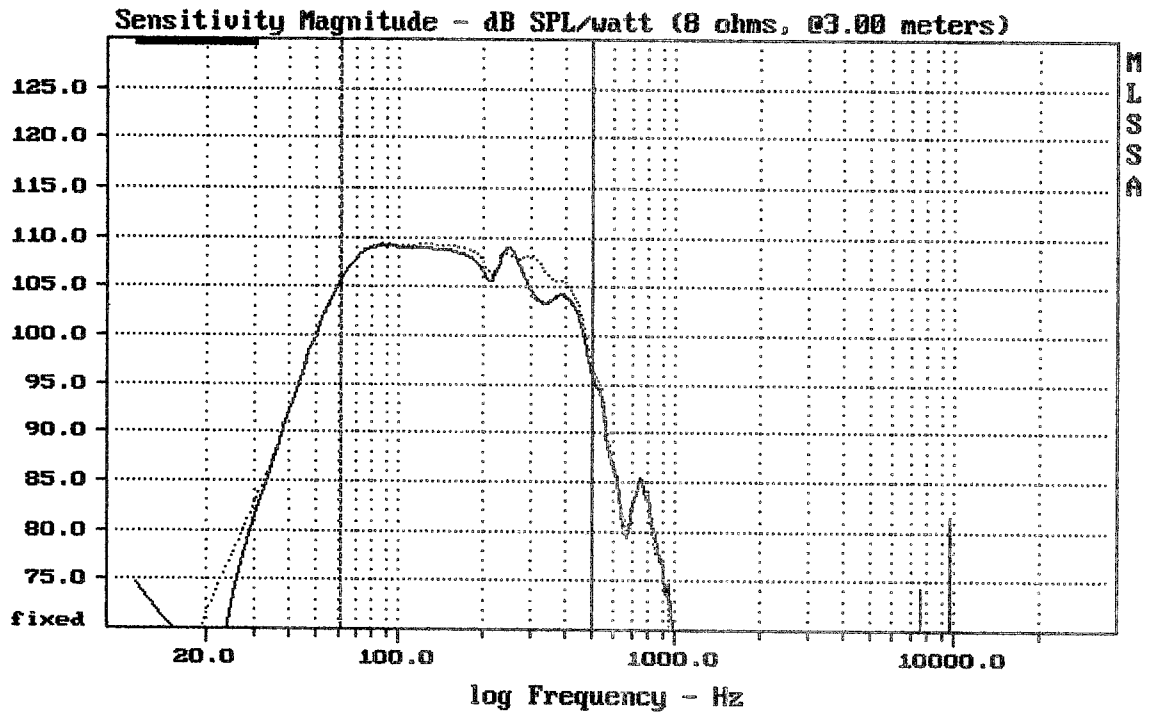
MLSSA: Frequency Domain



mean: -0.0002186, rms: 0.0009785, std: 0.0009538, max: 0.002348, min: -0.002743

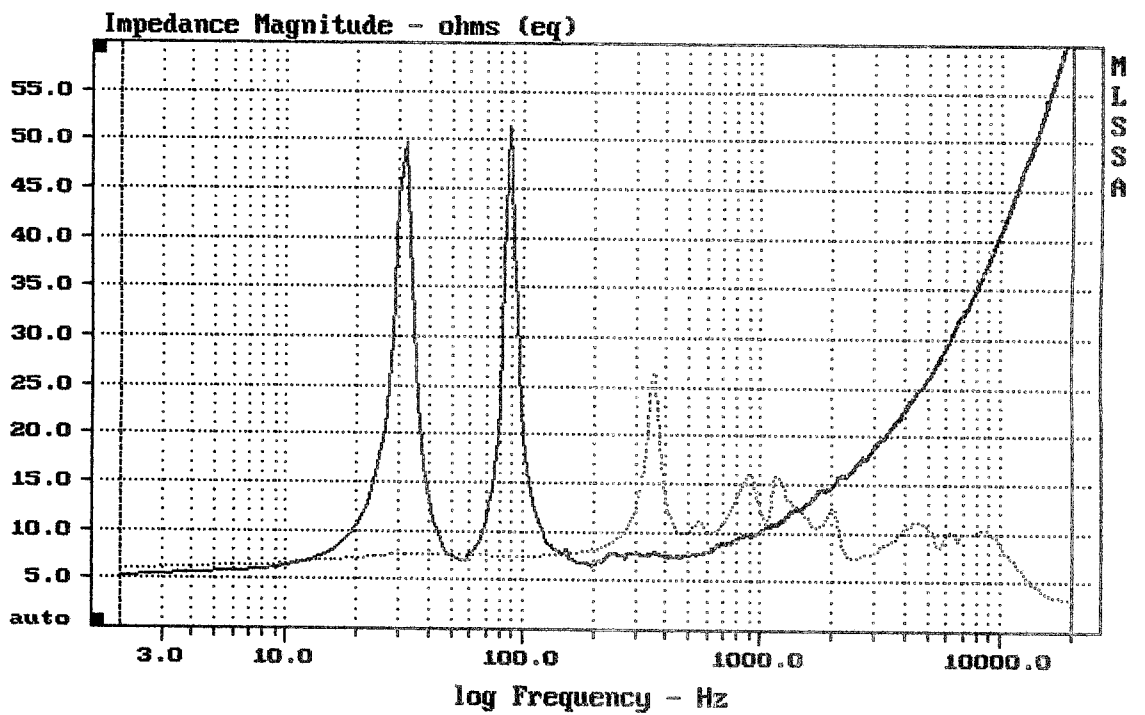
Megaton ND314

MLSSA: Time Domain



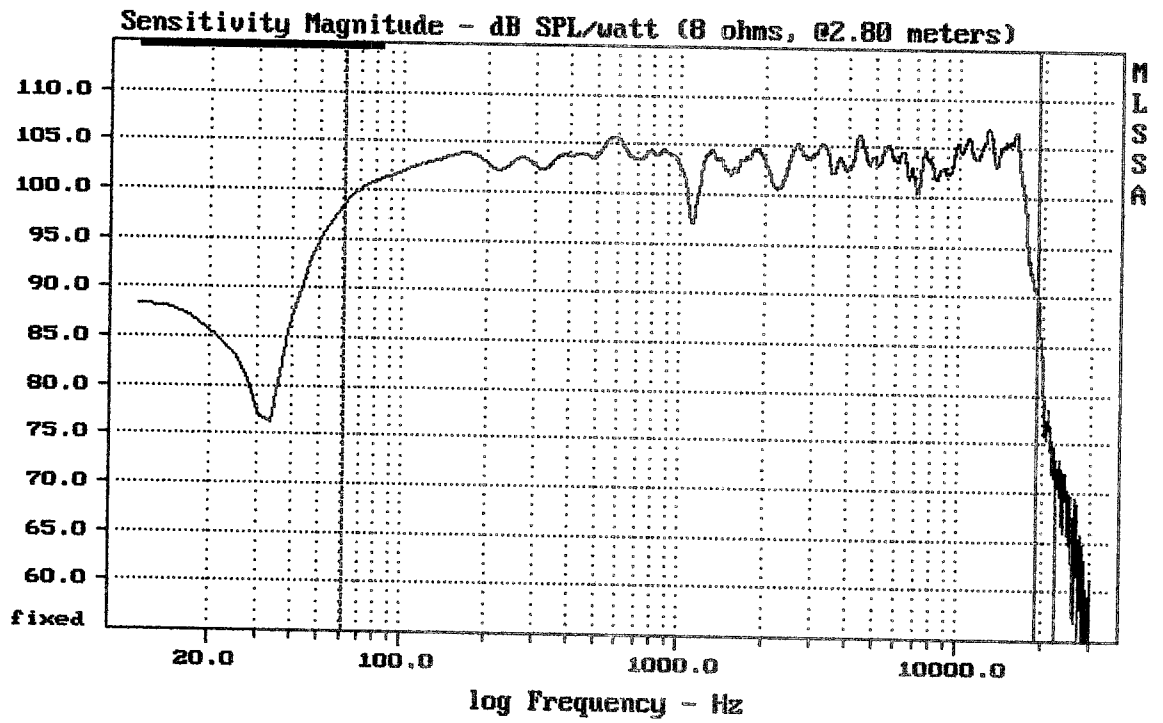
ND314 na zemi - EQ

MLSSA: Frequency Domain



Megaton ND314

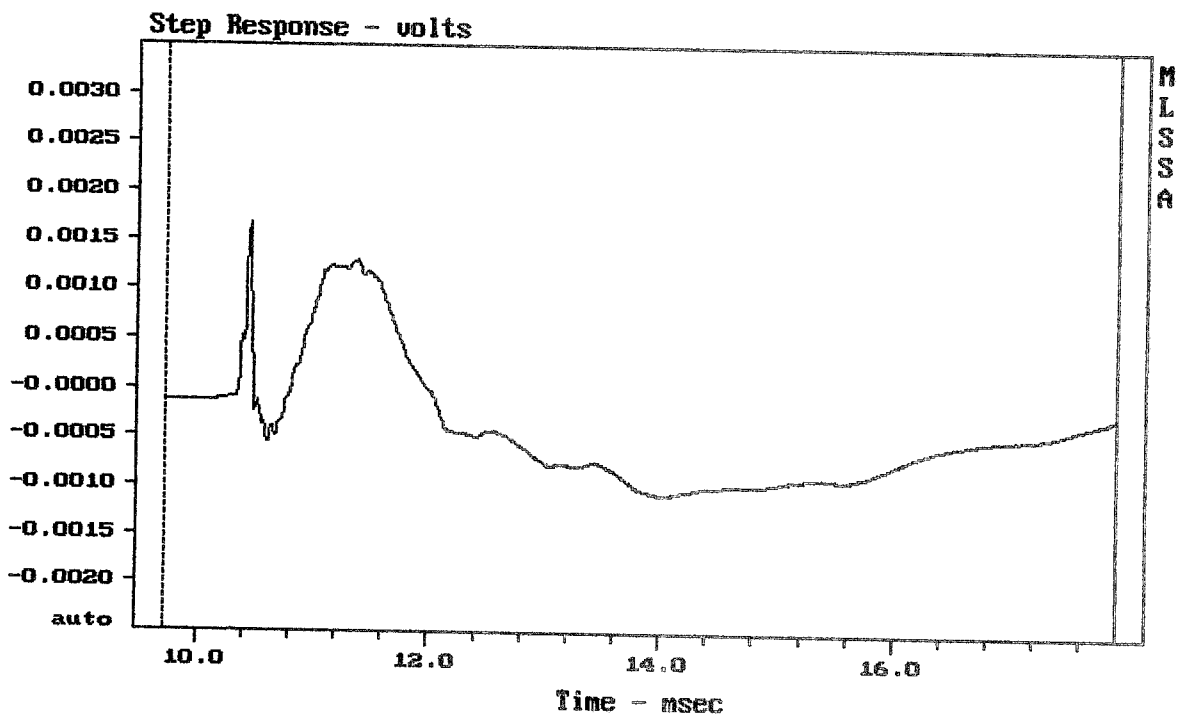
MLSSA: Frequency Domain



CURSOR: y = 90.6373 x = 19142.8439 (6900)

2x Megaton ND314 vedle sebe _ 23cm

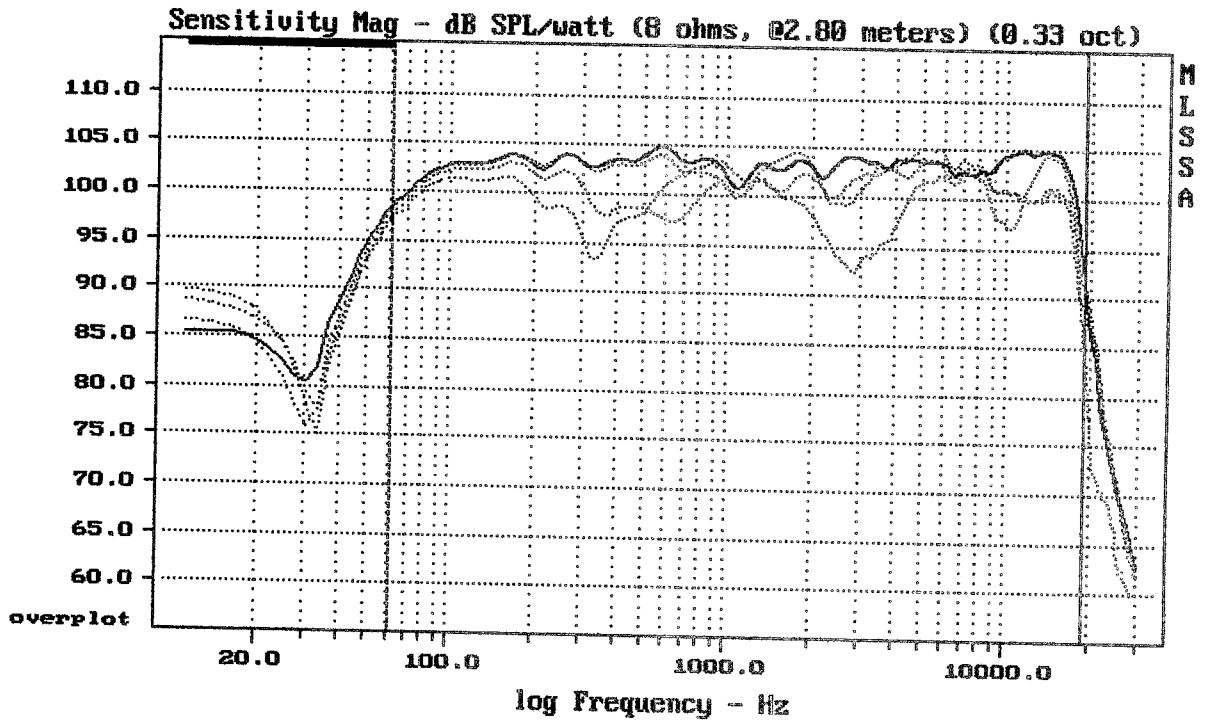
MLSSA: Frequency Domain



CURSOR: y = -0.000255534 x = 17.9080 (1628)

2x Megaton ND314 vedle sebe _ 23cm

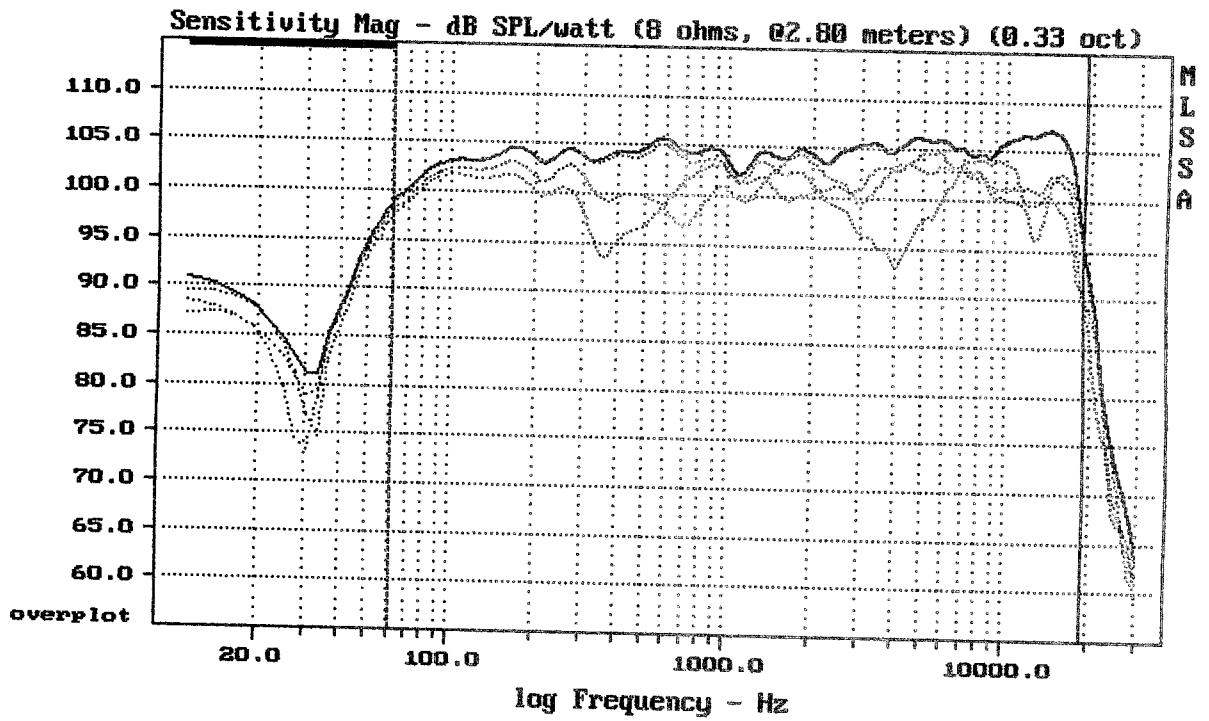
MLSSA: Time Domain



CURSOR: y = 88.8103 x = 19142.8439 (6900)

2x Megaton ND314 vedle sebe 24cm hor. 0 / 10 / 30 / 50

MLSSA: Frequency Domain



CURSOR: y = 90.2709 x = 19142.8439 (6900)

2x Megaton ND314 vedle sebe 20cm hor. 0 / 10 / 30 / 50

MLSSA: Frequency Domain