

Sestava DAS Audio 15B + B&C Speakers DE85/16 + Megaton C1250

Osazení:

- DAS Audio 15B 8/Ohm

<http://eshop.prodance.cz/DetailPage.asp?DPG=82819>

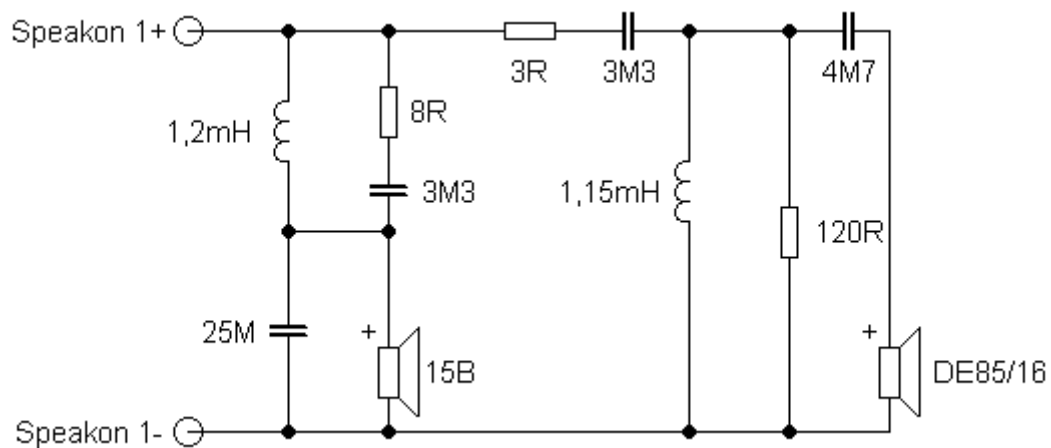
- B&C Speakers DE85/16 16/Ohm

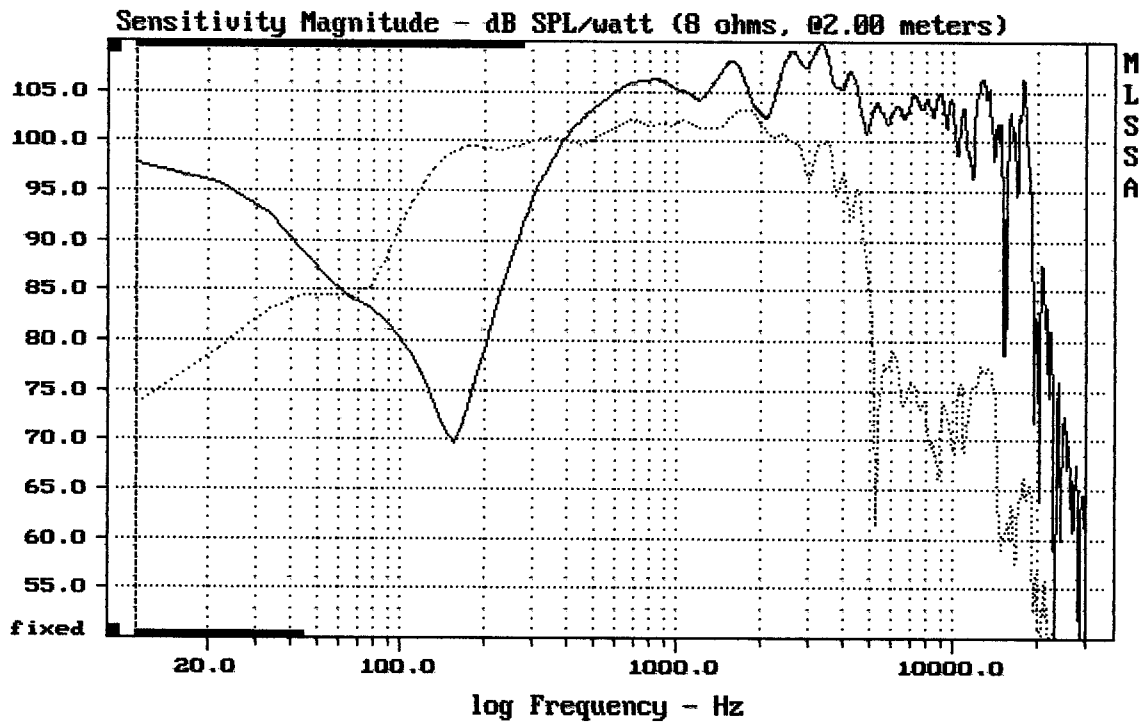
<http://eshop.prodance.cz/DetailPage.asp?DPG=82333>

- Megaton C1250

<http://eshop.prodance.cz/DetailPage.asp?DPG=84478>

Schéma výhybky:

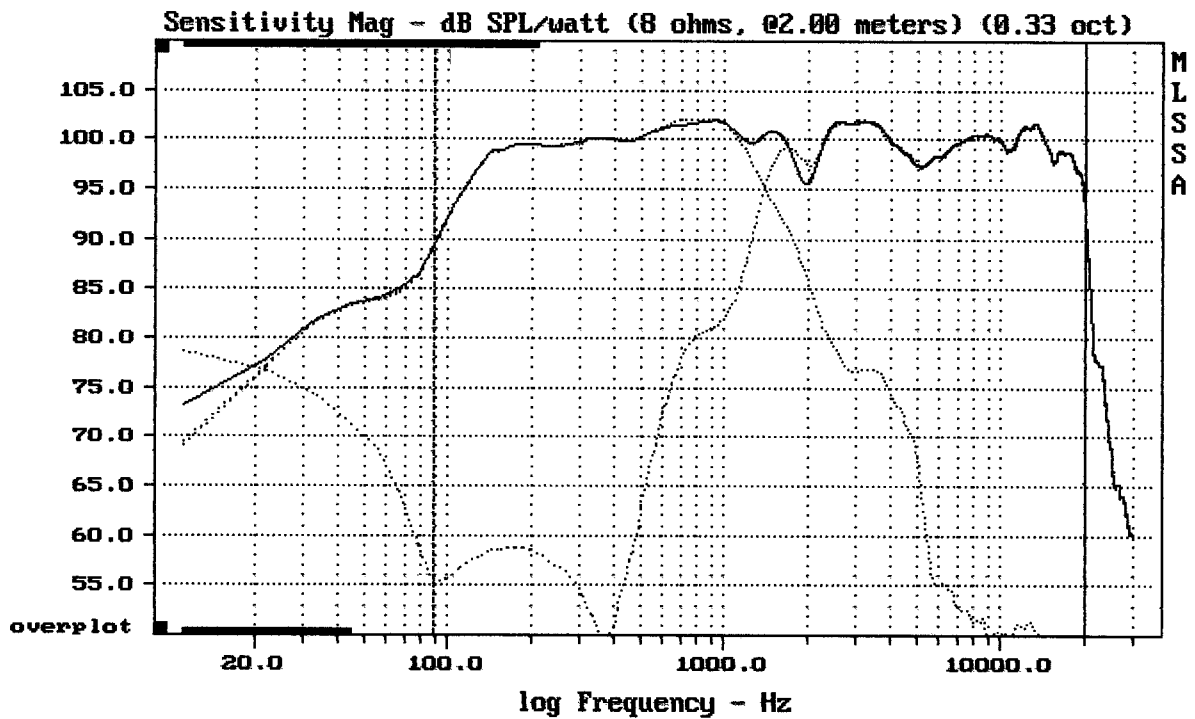




CURSOR: $dy = -33.3477$ $x = 30007.1014$ (2704)

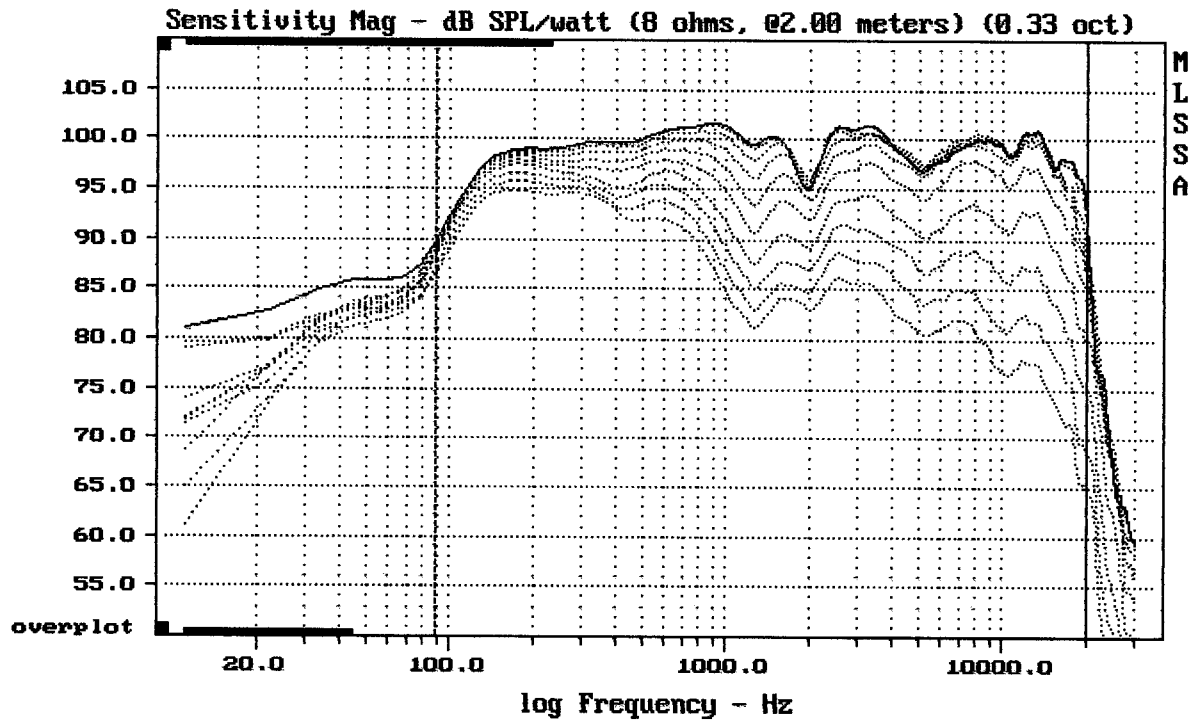
DAS15B + DE85/16 + C1250

MLSSA: Frequency Domain



Level (89:20000 Hz) = 99.74 dB SPL/watt (8 ohms, 02.00 meters) (0.33 oct)

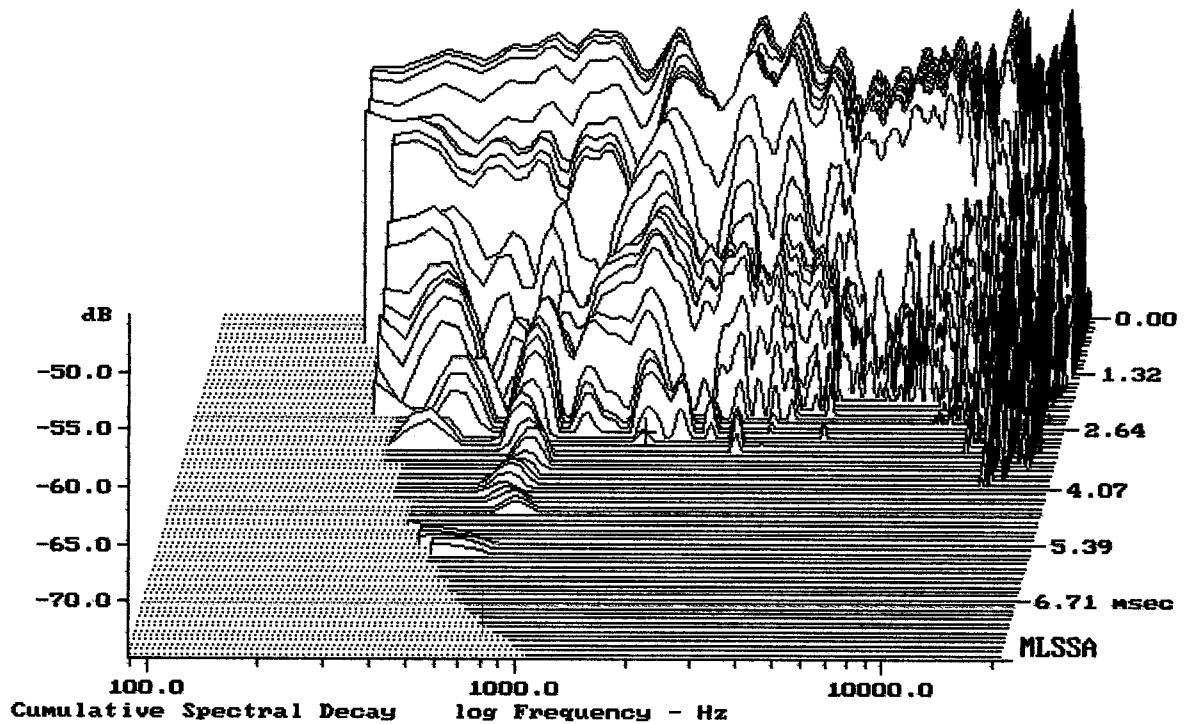
DAS15B + DE85/16 + C1250



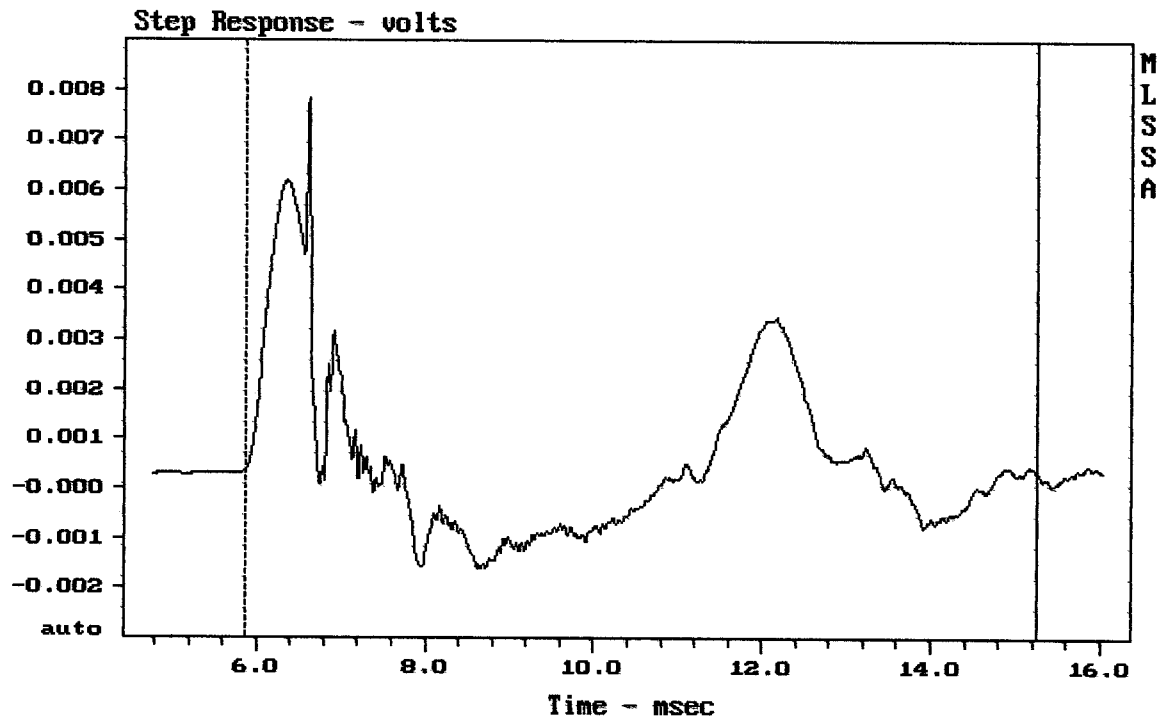
Overlay Compare: dev= +18/-9.6, std= 5.3, avg= -21

DAS15B + DE85/16 + C1250

MLSSA: Frequency Domain



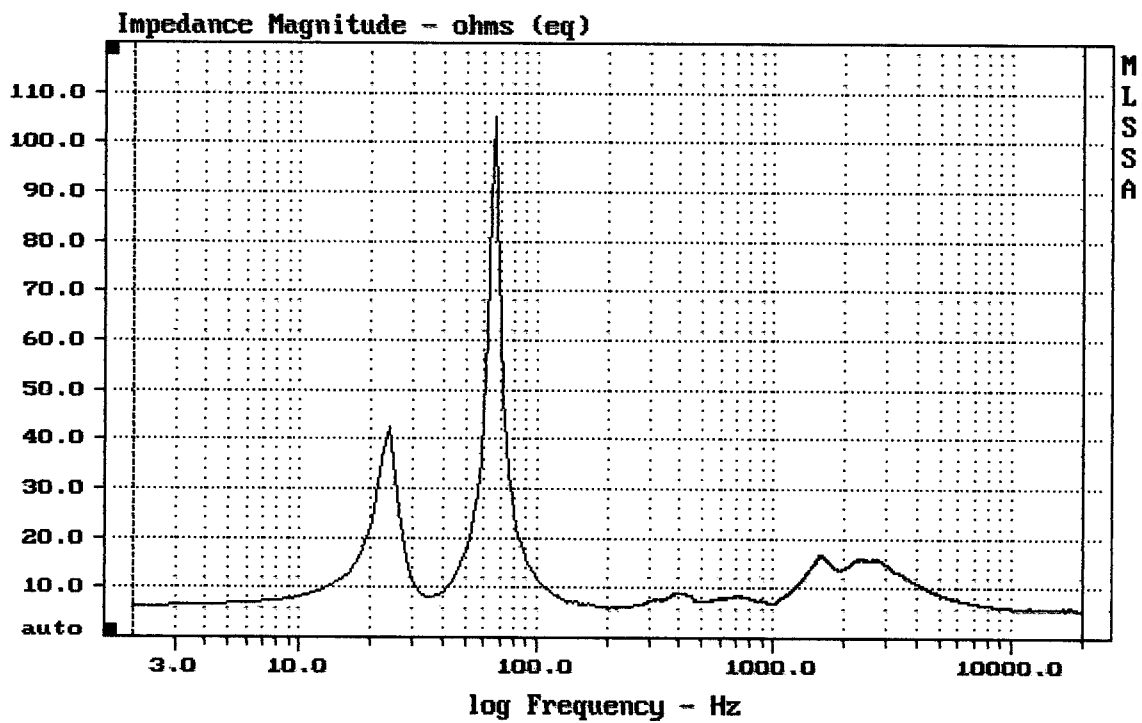
-74.22 dB, 1554 Hz (35), 2.970 msec (28)



mean: 0.000537, rms: 0.001786, std: 0.001703, max: 0.007829, min: -0.001611

DAS15B + DE85/16 + C1250

MLSSA: Time Domain



mean: 7.667, rms: 8.425, std: 3.492, max: 105.3, min: 5.481

DAS15B + DE85/16 + C1250