

Sestava Eminence Delta-12 + Selenium DT150

Osazení:

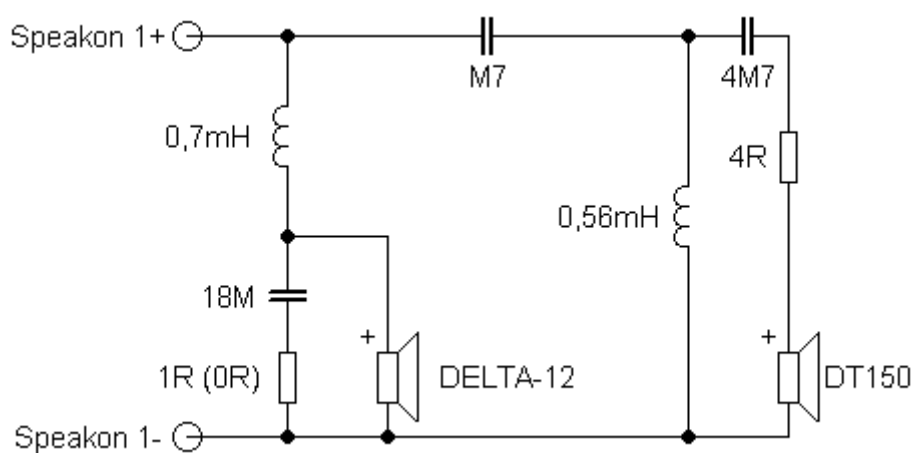
- Eminence Delta-12 8/Ohm

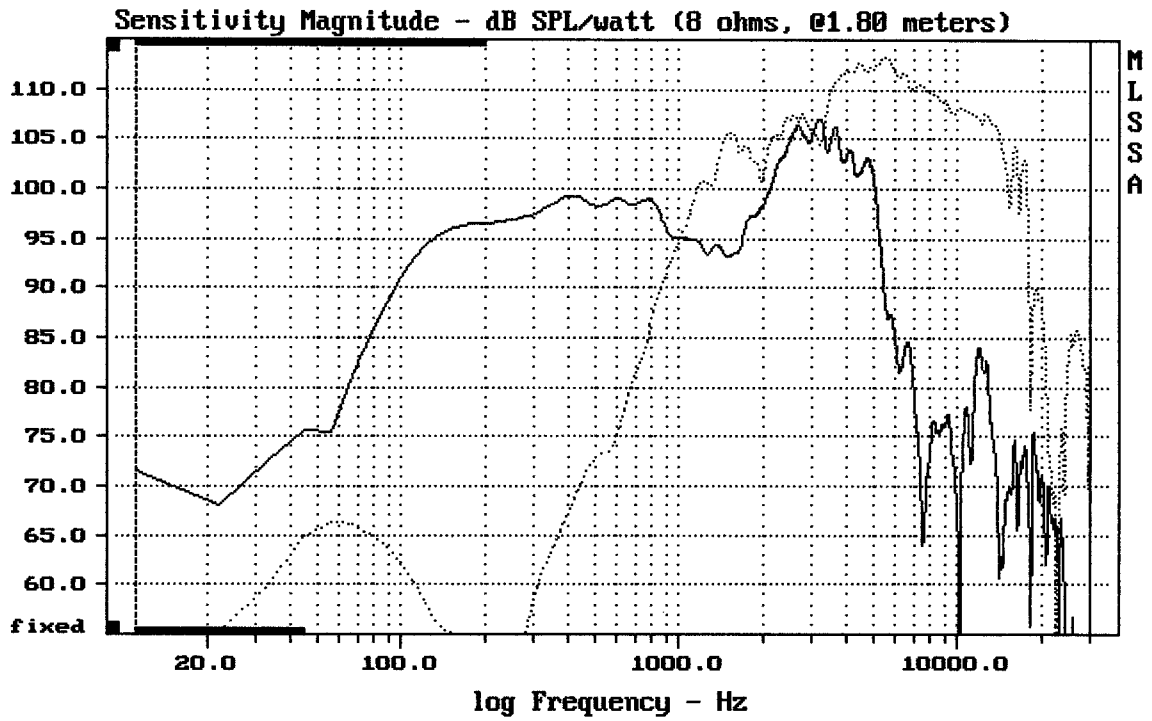
<http://eshop.prodance.cz/DetailPage.asp?DPG=82360>

- Selenium DT150 8/Ohm

<http://eshop.prodance.cz/DetailPage.asp?DPG=82055>

Schéma výhybky:

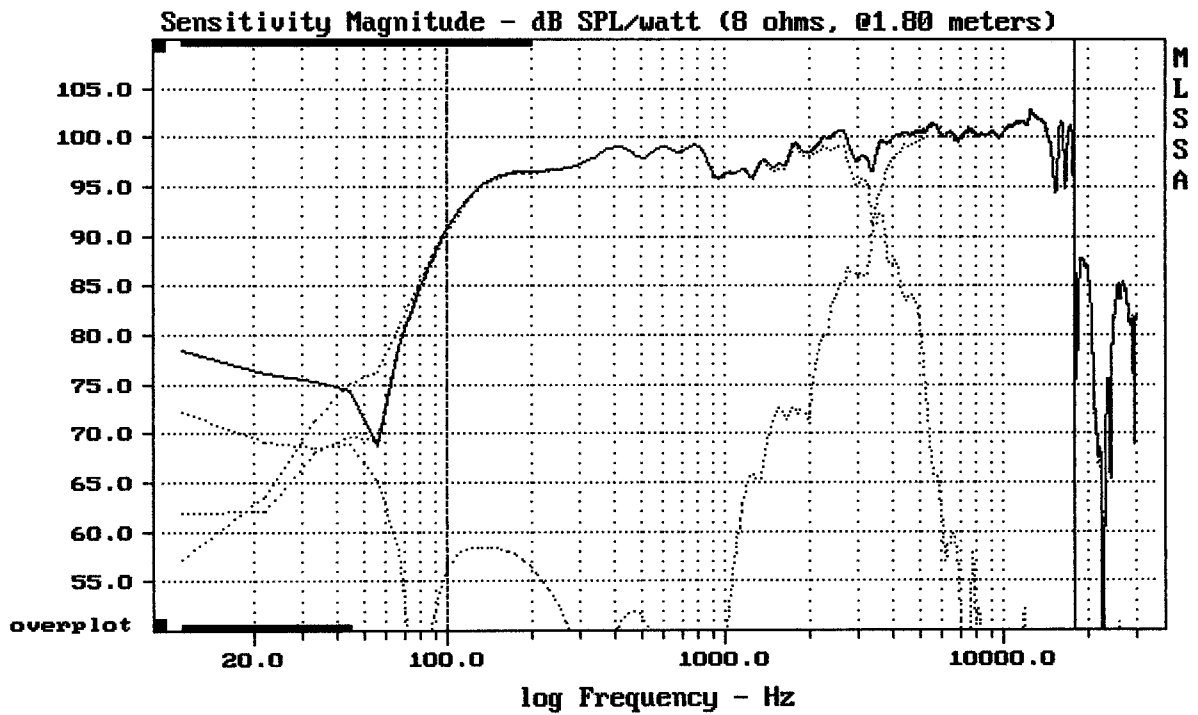




CURSOR: dy = 34.6993 x = 30007.1014 (2704)

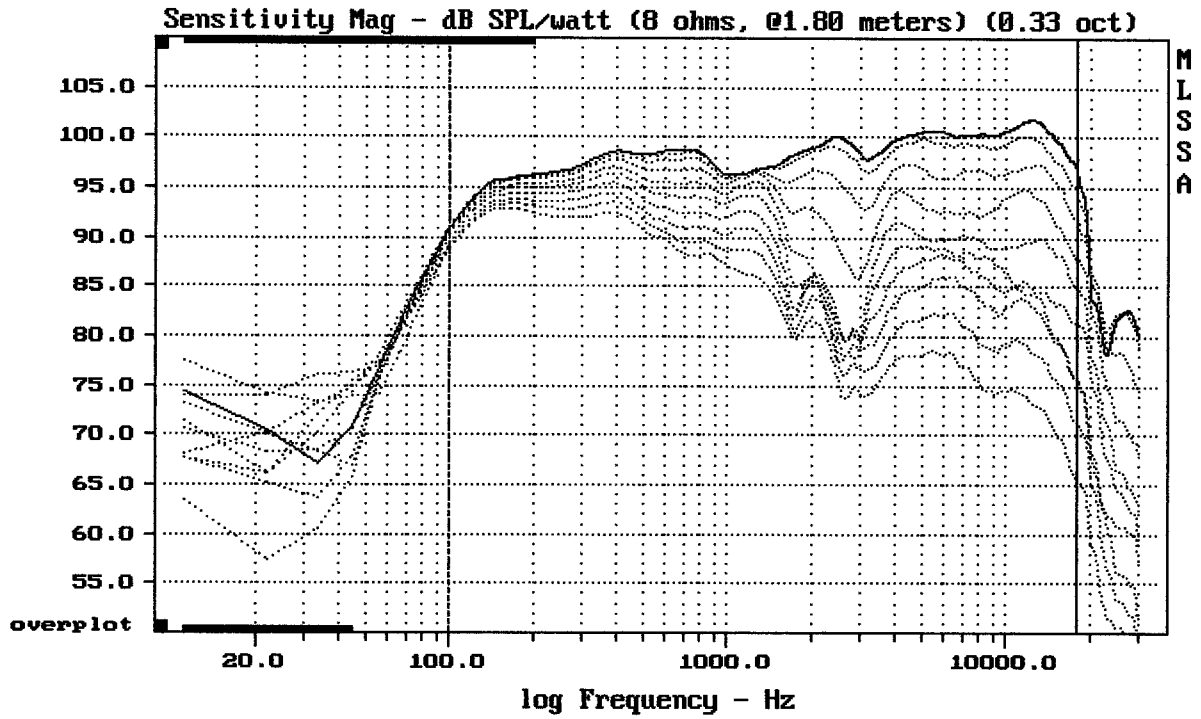
EMINENCE DELTA 12 + DT150

MLSSA: Frequency Domain



Level (100:18011 Hz) = 98.76 dB SPL/watt (8 ohms, @1.80 meters)

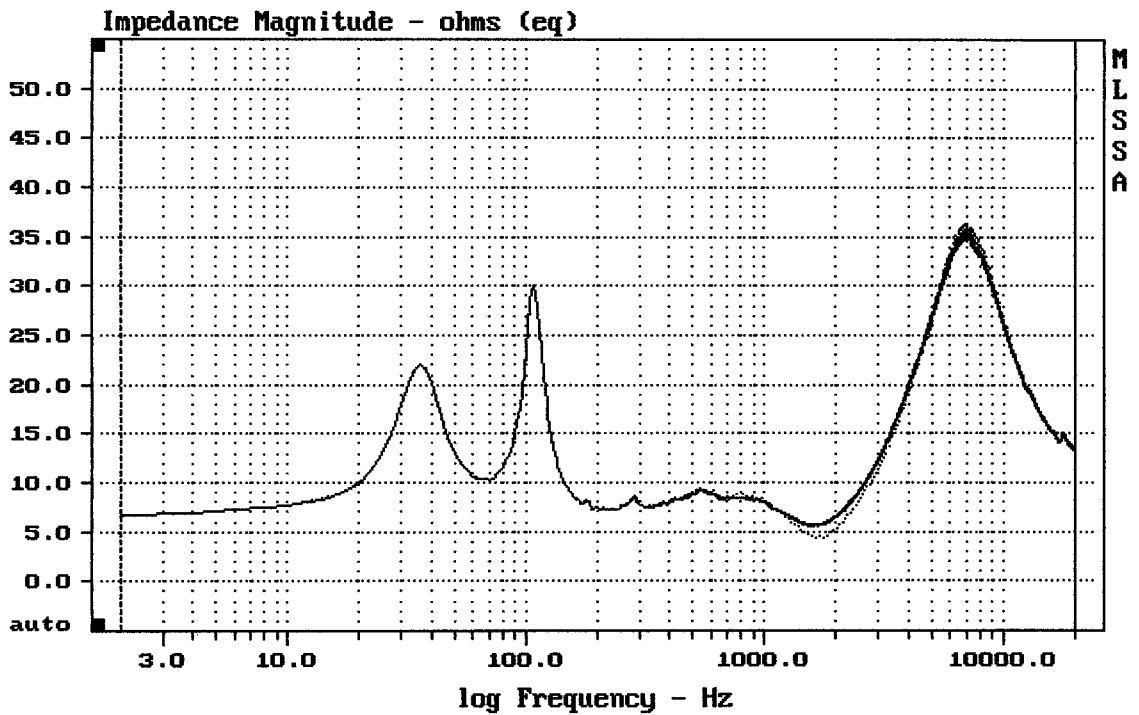
EMINENCE DELTA 12 + DT150



Overlay Compare: dev= +23/-7, std= 5.8, avg= -25

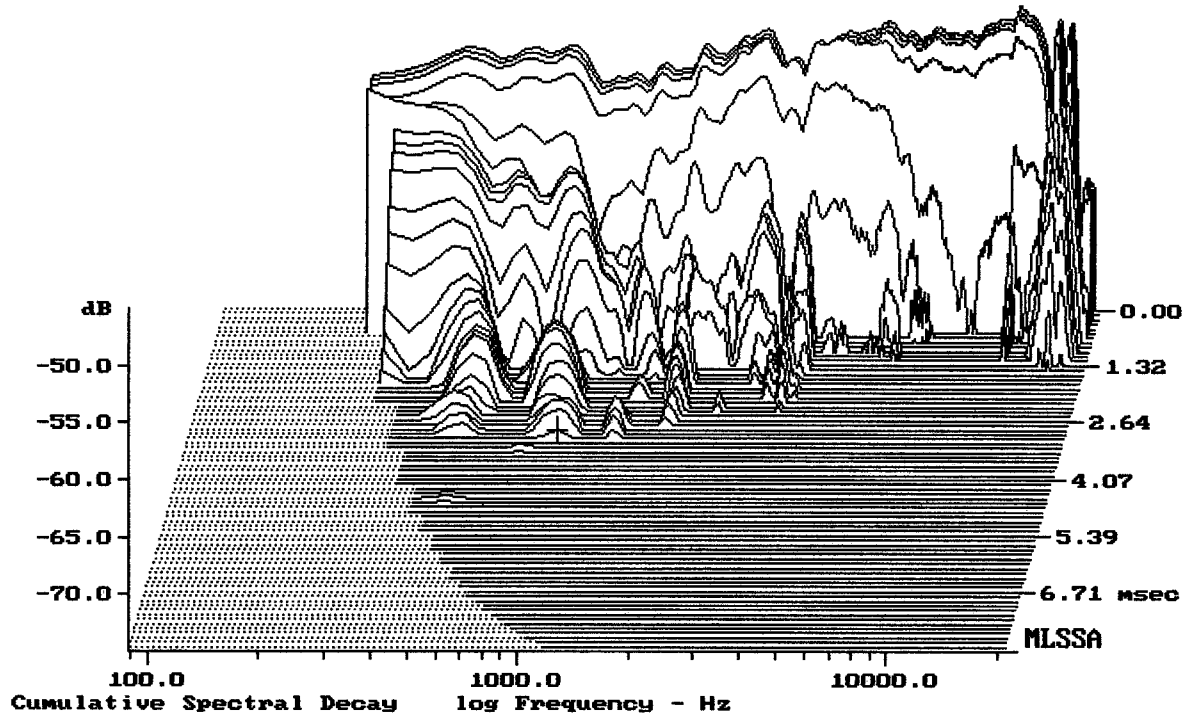
EMINENCE DELTA 12 + DT150

MLSSA: Frequency Domain



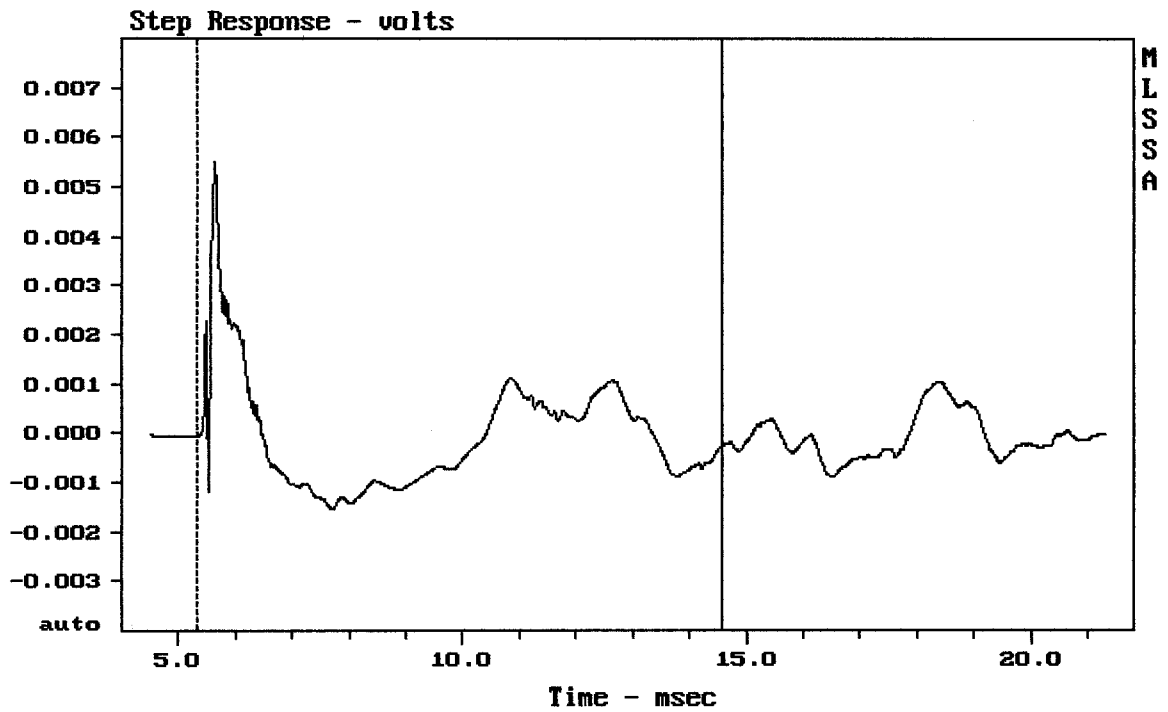
mean: 19.9, rms: 21.7, std: 8.656, max: 36.25, min: 4.374

EMINENCE DELTA 12 + DT150



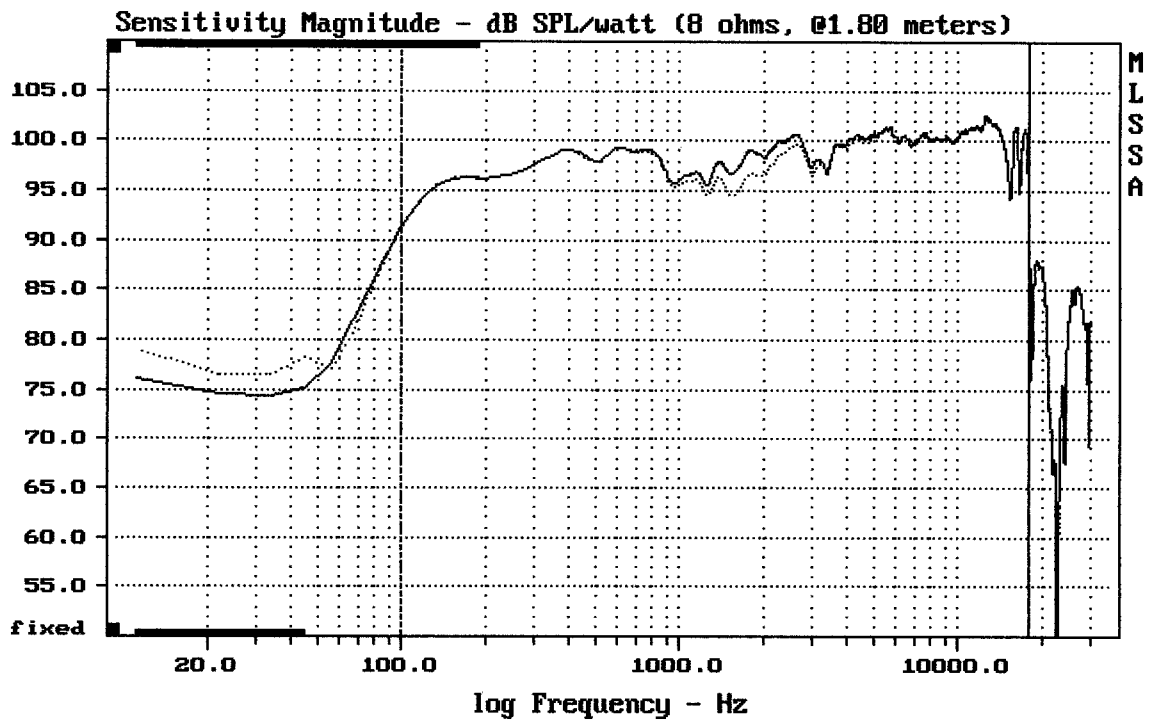
-74.30 dB, 888 Hz (20), 3.080 msec (29)

DTTO



mean: -8.515e-005, rms: 0.001118, std: 0.001115, max: 0.005515, min: -0.001553

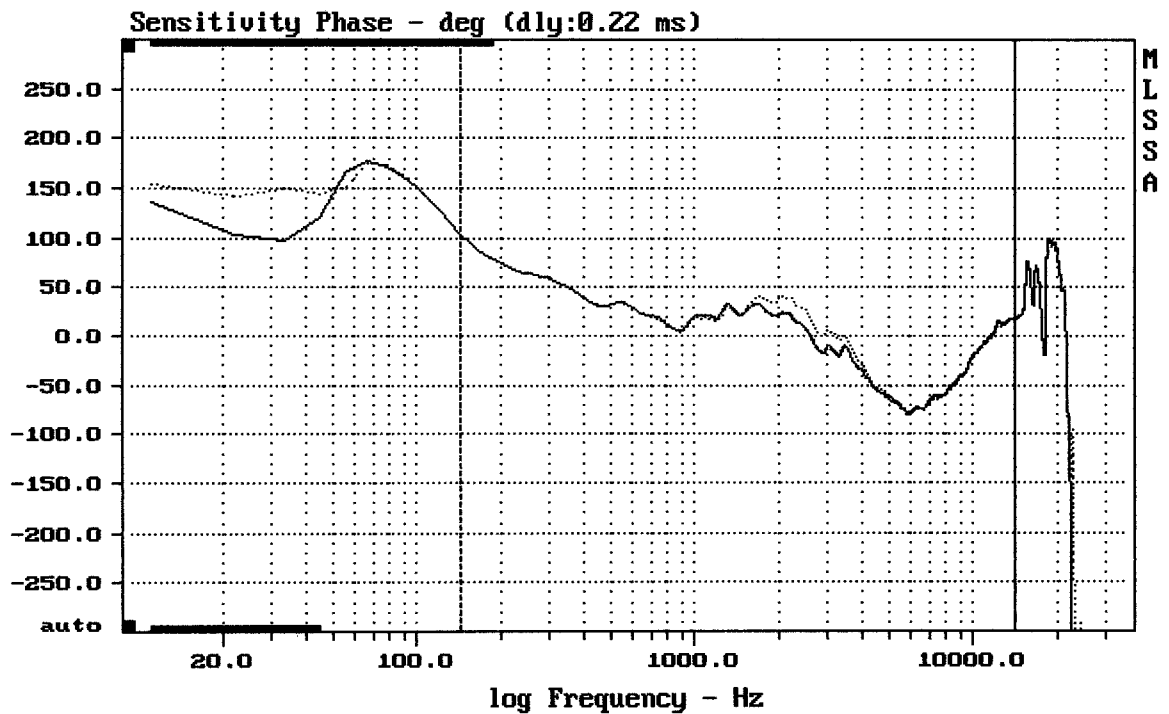
EMINENCE DELTA 12 + DT150



Level (100:18011 Hz) = 98.48 dB SPL/watt (8 ohms, @1.80 meters)

EMINENCE DELTA 12 + DT150

MLSSA: Frequency Domain



mean: -18.22, rms: 41.71, std: 37.52, max: 103.8, min: -79.58

EMINENCE DELTA 12 + DT150

... s odporem 1R