

Sestava Fane DX12HE + CD145

Osazení:

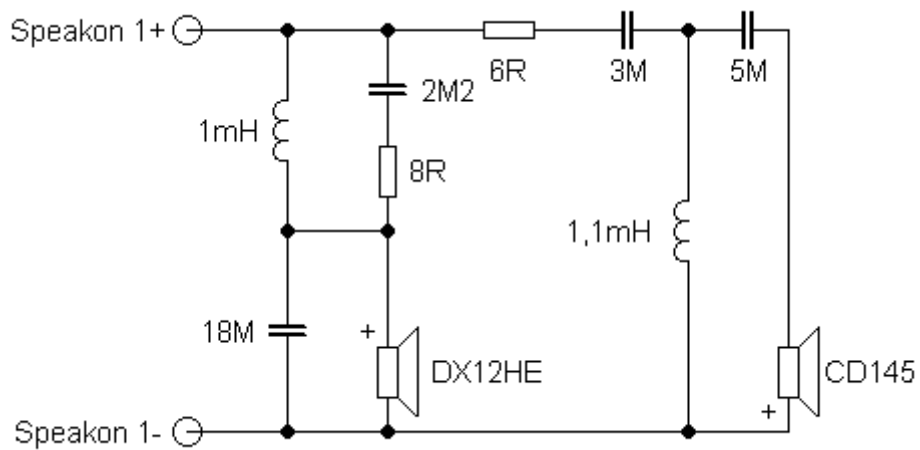
- Fane DX12HE 8/Ohm

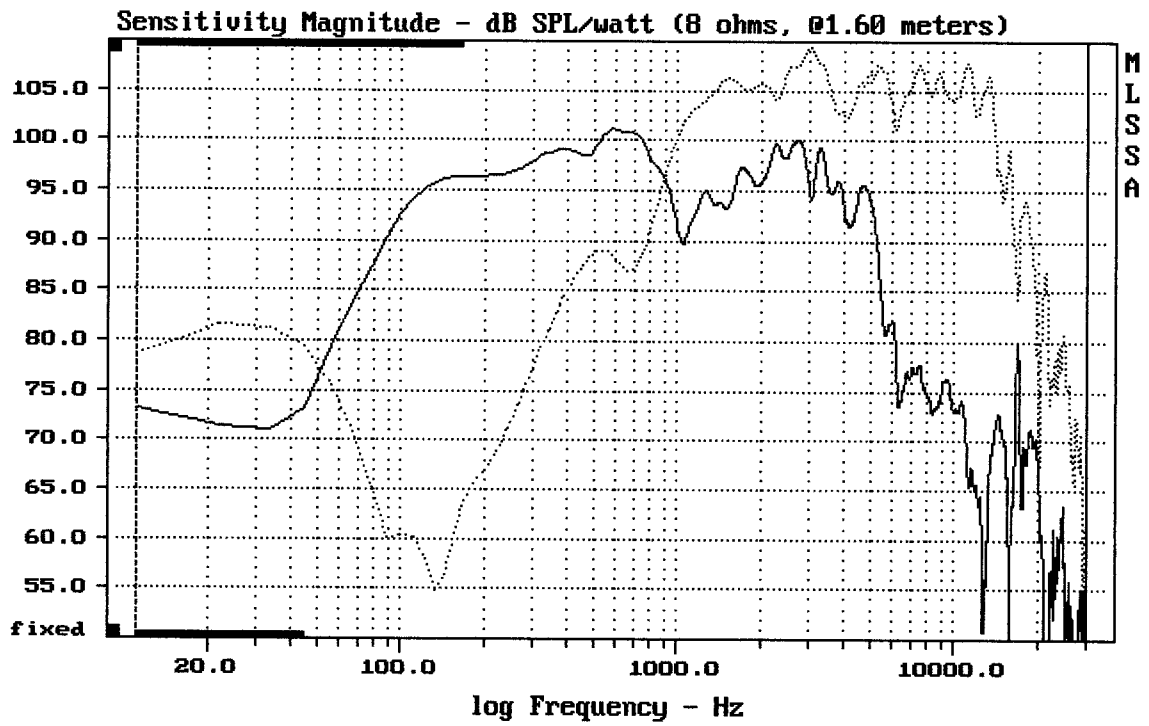
<http://eshop.prodance.cz/DetailPage.asp?DPG=84997>

- Fane CD145 8/Ohm

<http://eshop.prodance.cz/DetailPage.asp?DPG=90668>

Schéma výhybky:

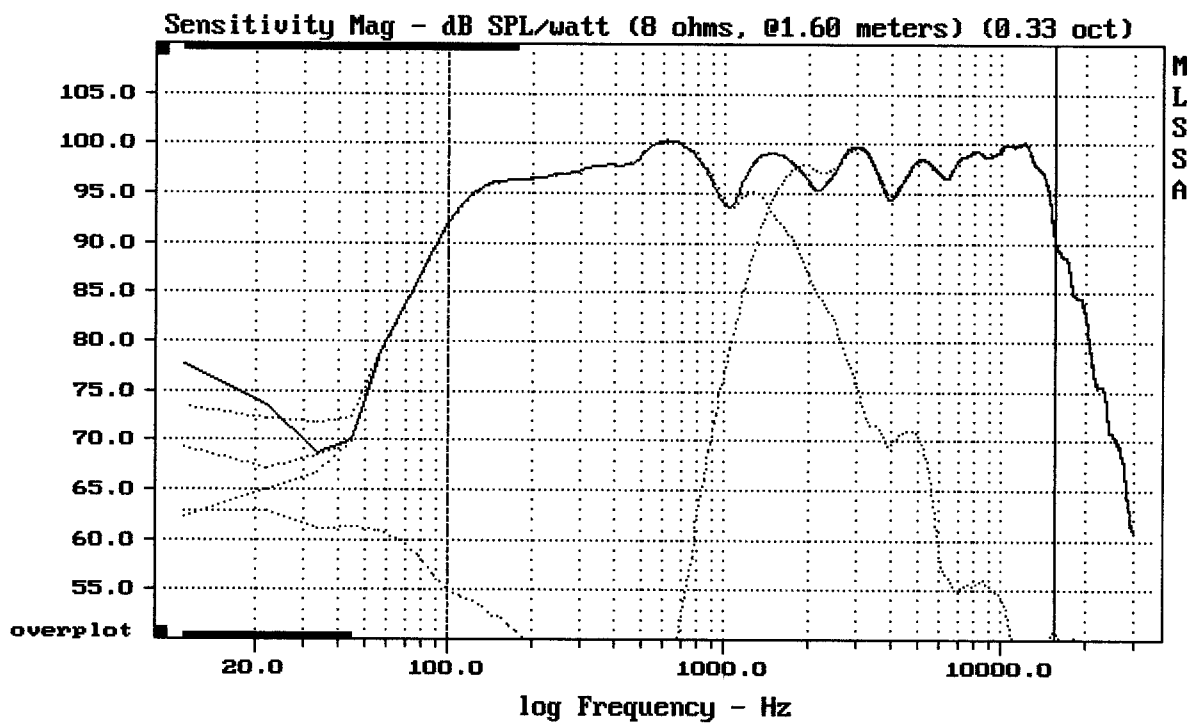




CURSOR: dy = 15.3362 x = 30007.1014 (2704)

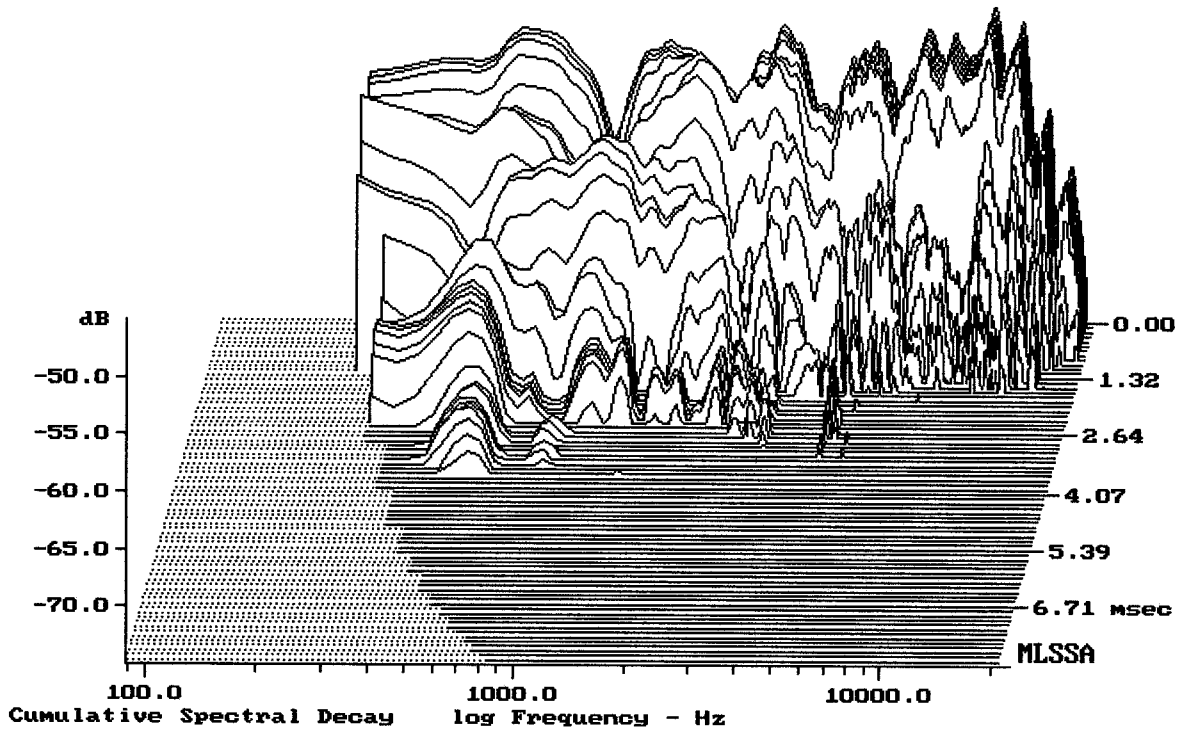
DX12HE + CD145

MLSSA: Frequency Domain



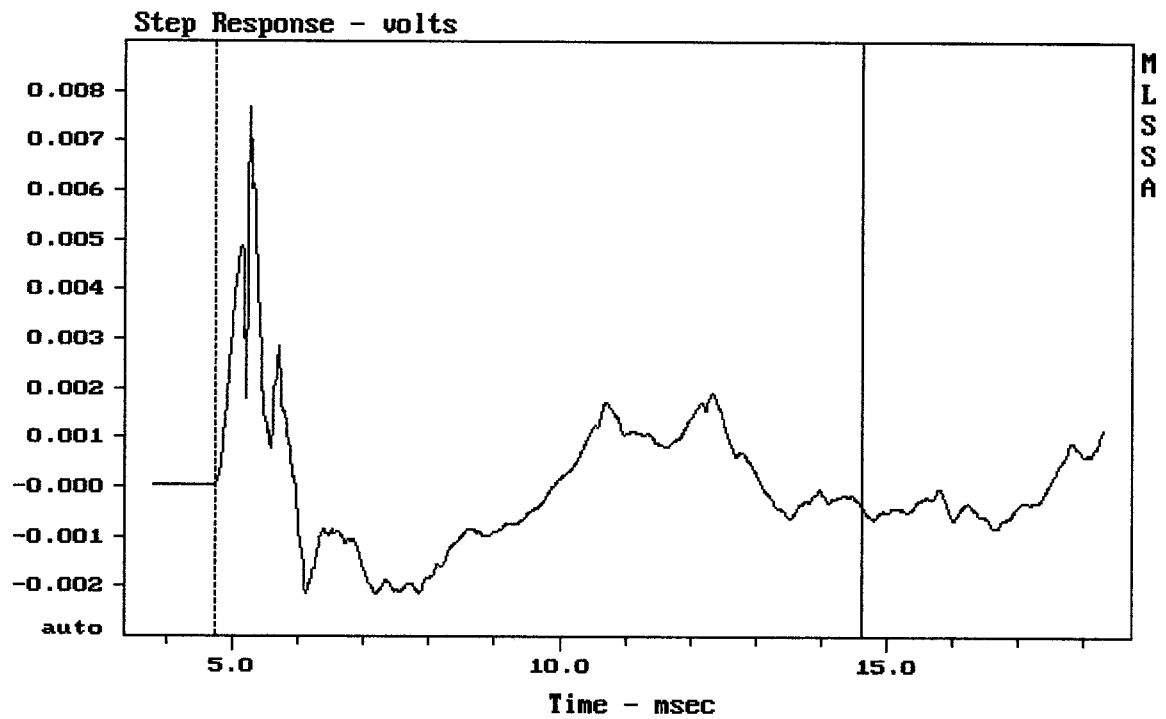
Level (100:15503 Hz) = 97.73 dB SPL/watt (8 ohms, @1.60 meters) (0.33 oct)

DX12HE + CD145



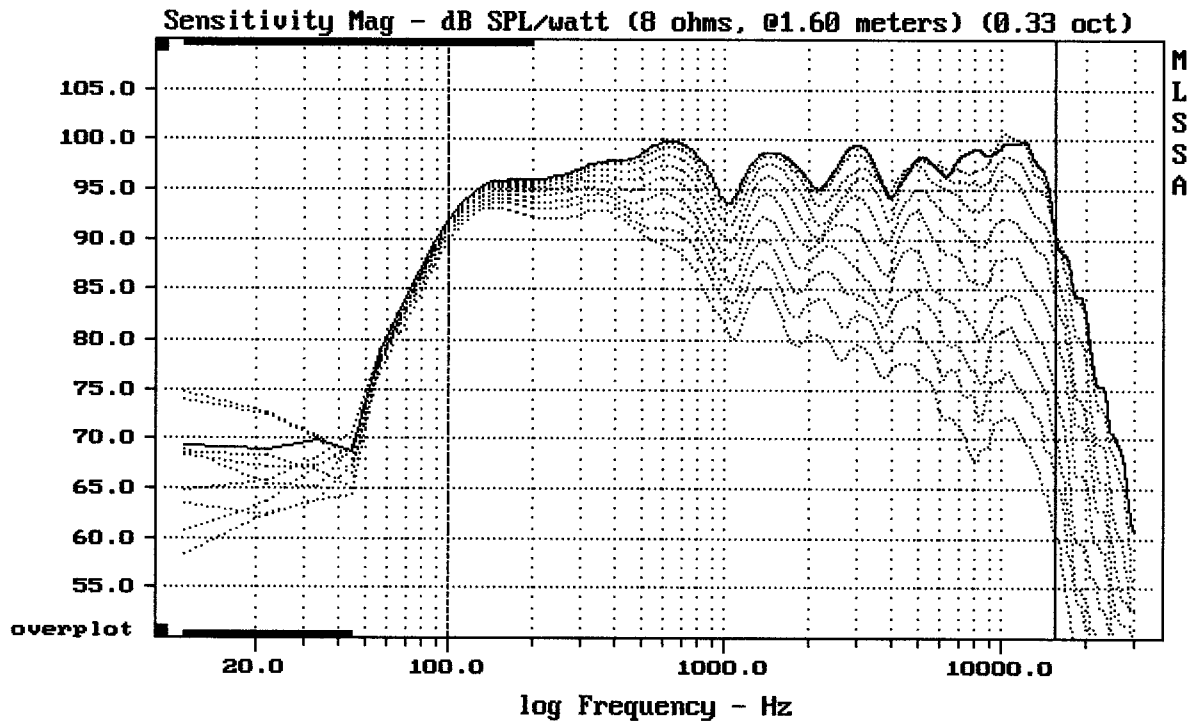
-73.62 dB, 2930 Hz (66), 2.750 msec (26)

dtto



mean: 9.815e-005, rms: 0.001546, std: 0.001543, max: 0.007688, min: -0.002152

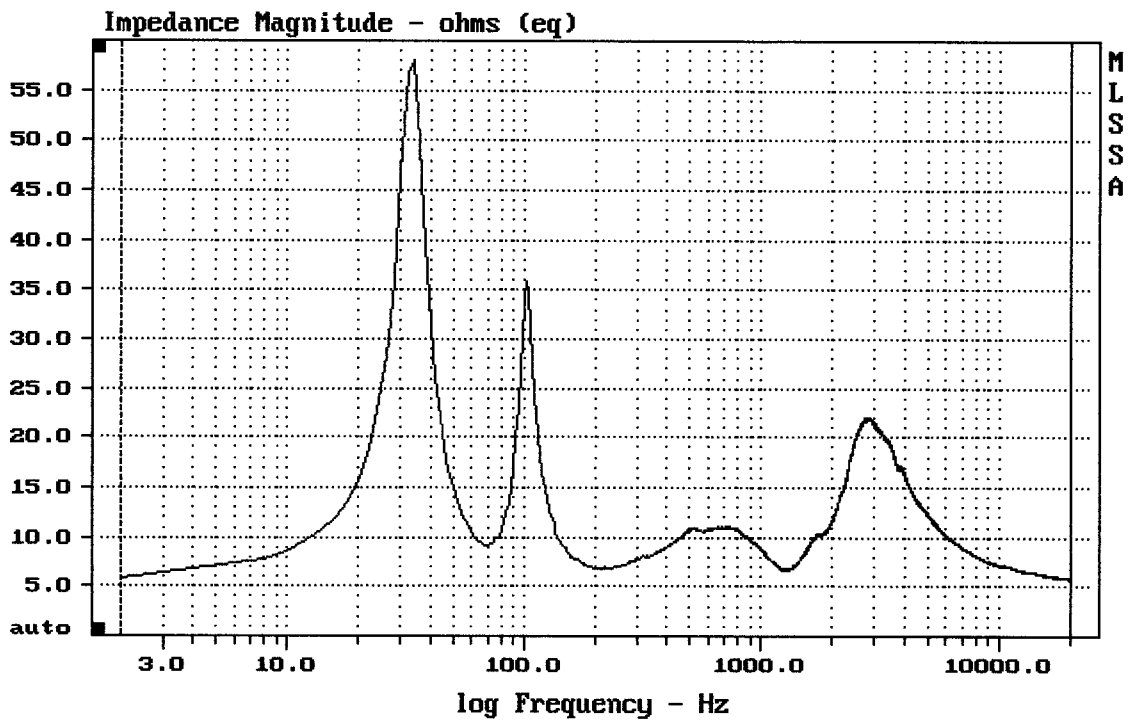
DX12HE + CD145



Overlay Compare: dev= +22/-7.4, std= 6.7, avg= -24

DX12HE + CD145

MLSSA: Frequency Domain



mean: 8.908, rms: 9.84, std: 4.18, max: 58.01, min: 5.733

DX12HE + CD145