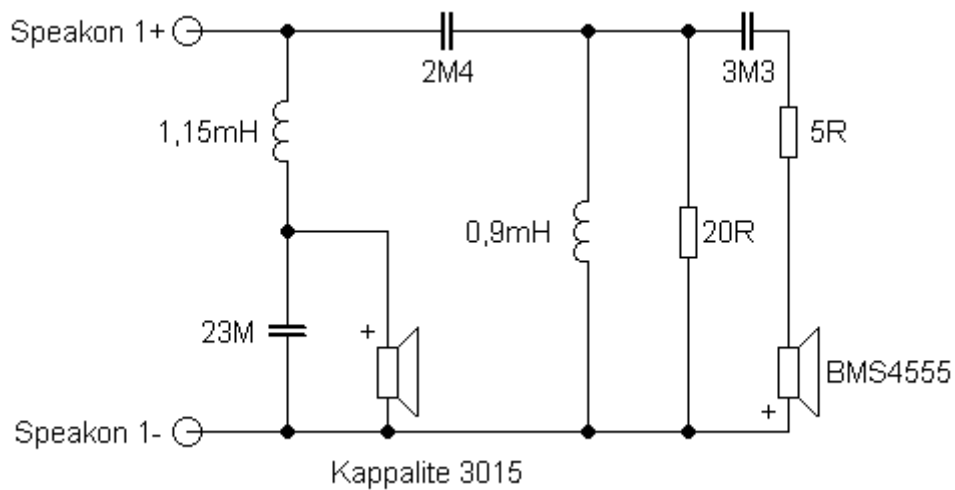


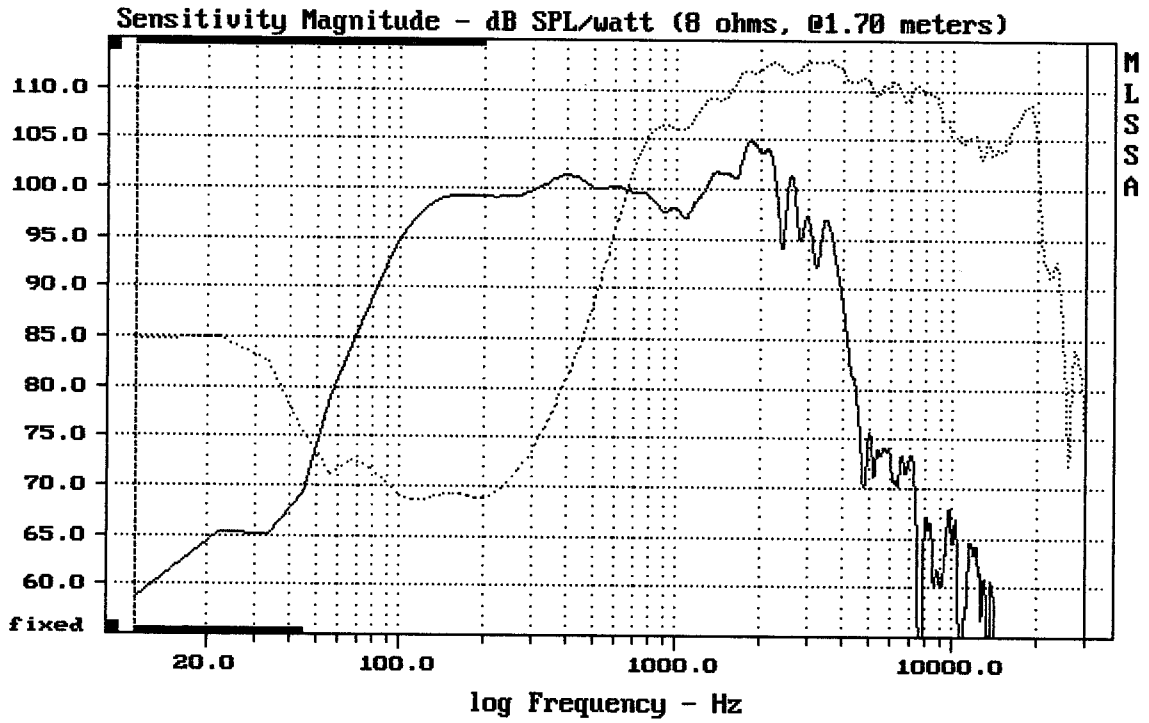
Sestava Eminence Kappalite 3015 + BMS BMS4555 + RCF HF94

Osazení:

- Eminence Kappalite 3015 8/Ohm
<http://eshop.prodance.cz/DetailPage.asp?DPG=91489>
- BMS BMS4555 8/Ohm
<http://eshop.prodance.cz/DetailPage.asp?DPG=87228>
- RCF HF94
<http://eshop.prodance.cz/DetailPage.asp?DPG=81664>

Schéma výhybky:

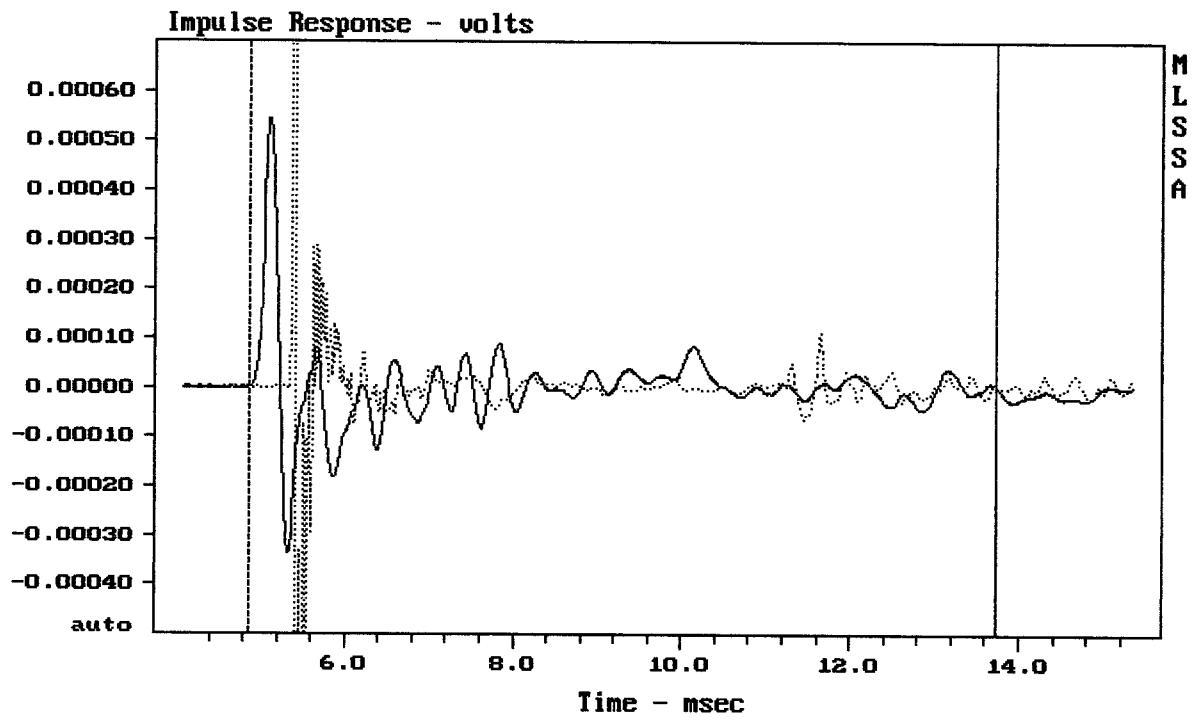




CURSOR: dy = 36.0466 x = 30007.1014 (2704)

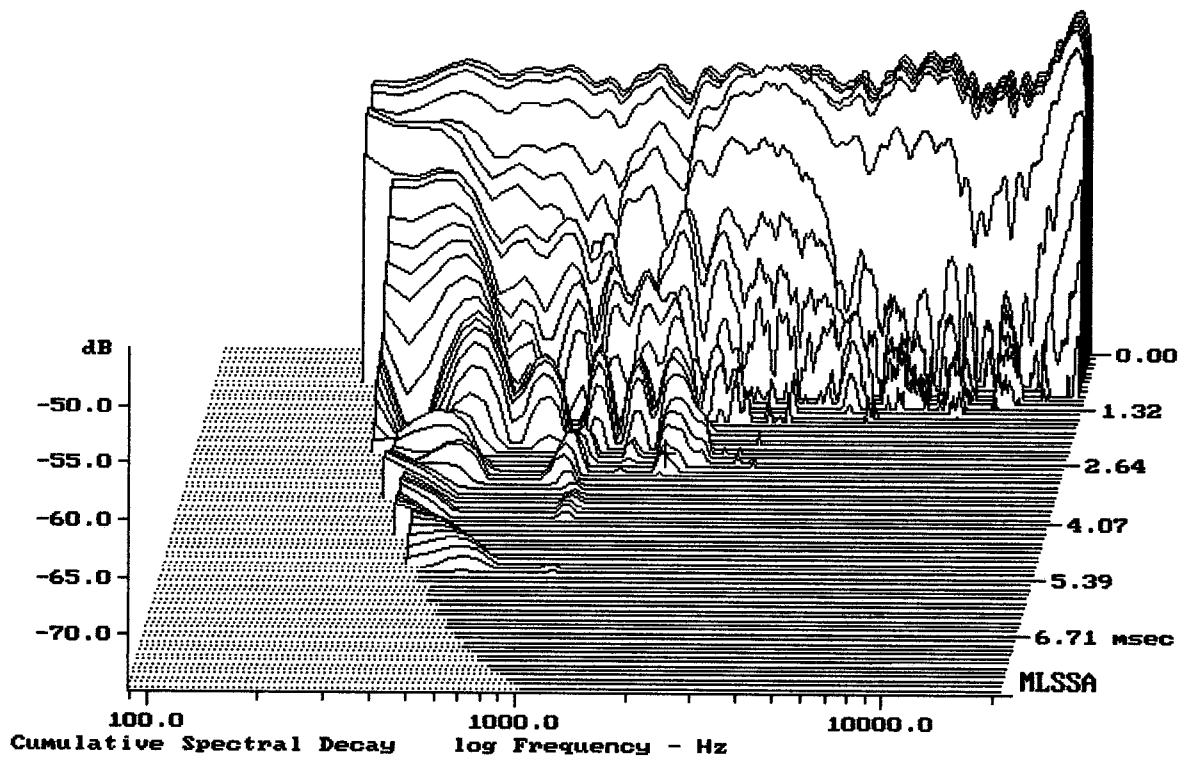
KAPPALITE 3015 + BMS4555 + HF94

MLSSA: Frequency Domain



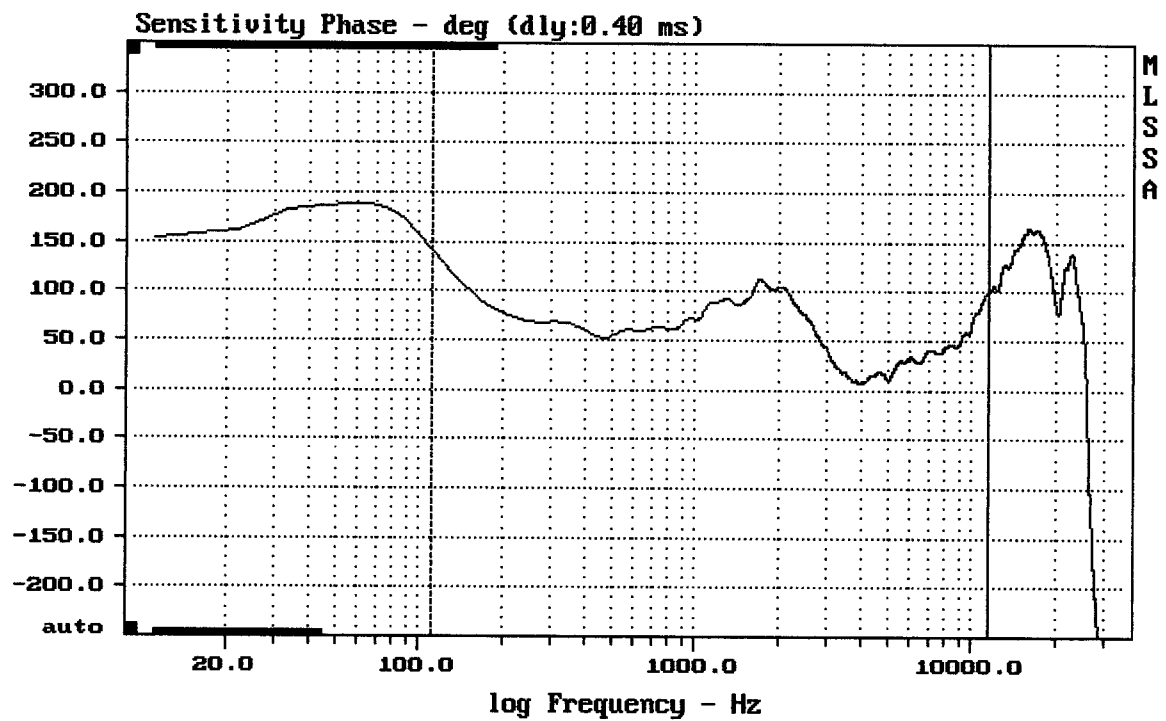
mean: 3.383e-007, rms: 0.0001206, std: 0.0001206, max: 0.001474, min: -0.001087

KAPPALITE 3015 + BMS4555 + HF94



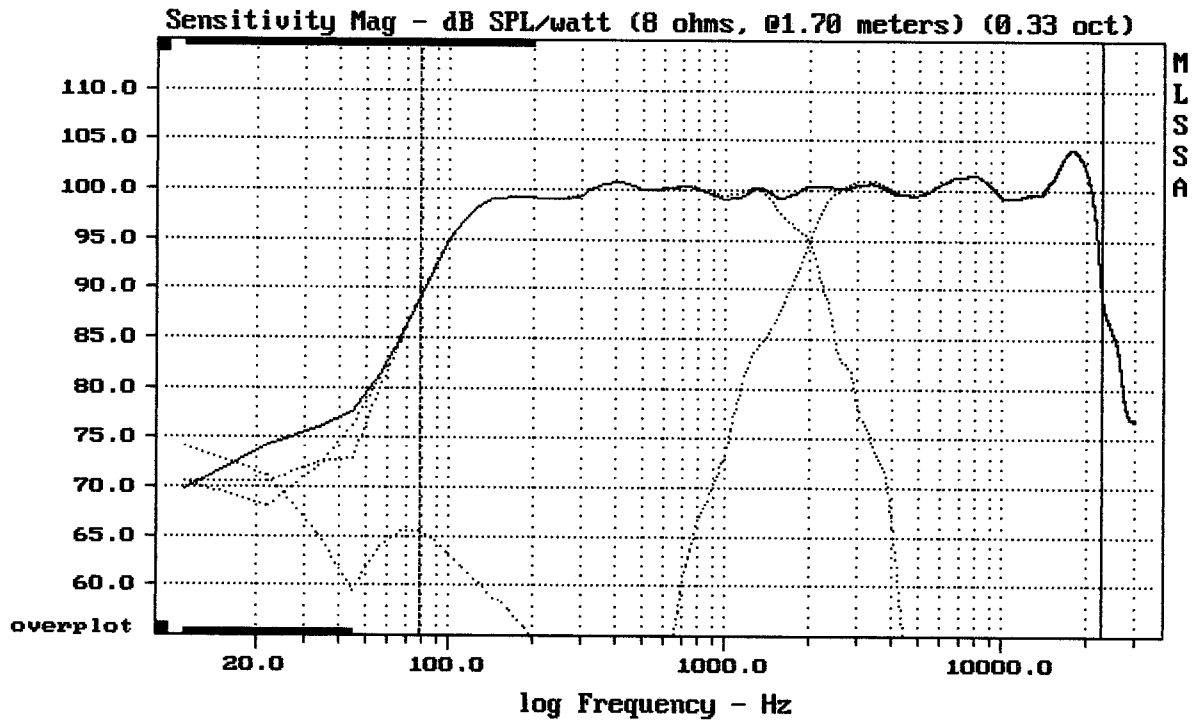
-73.42 dB, 1731 Hz (39), 2.860 msec (27)

DTTO



mean: 51.61, rms: 58.85, std: 28.29, max: 142.4, min: 7.127

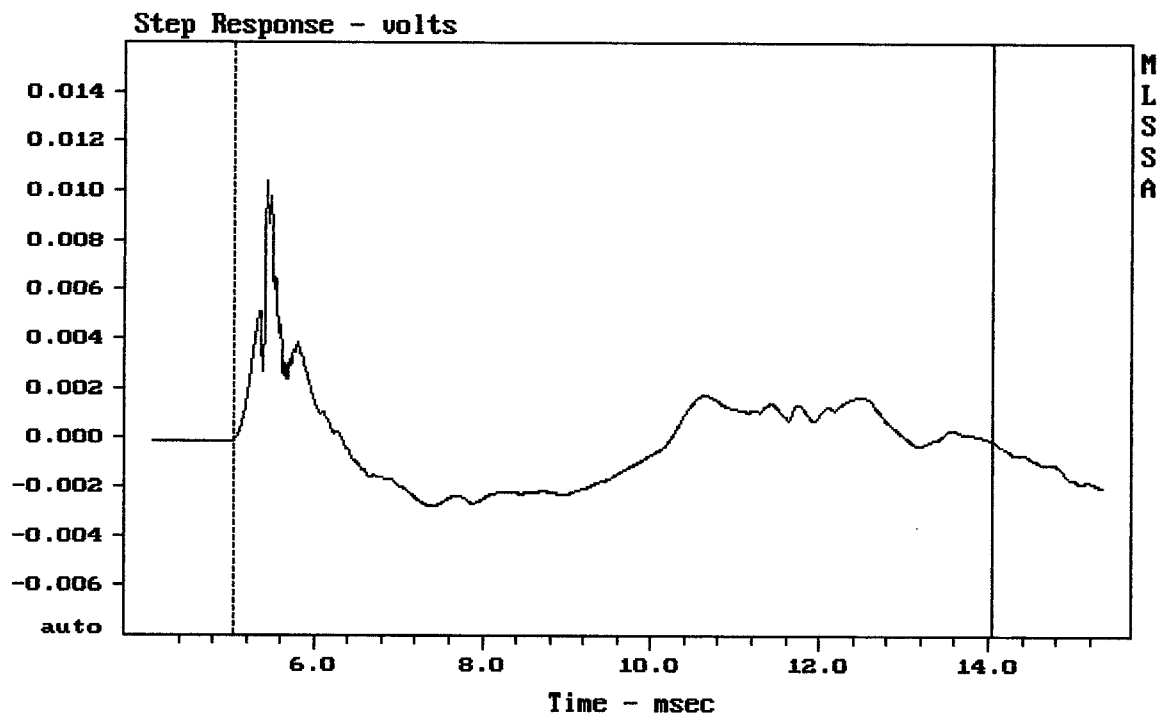
KAPPALITE 3015 + BMS4555 + HF94



Level (78:23005 Hz) = 99.87 dB SPL/watt (8 ohms, @1.70 meters) (0.33 oct)

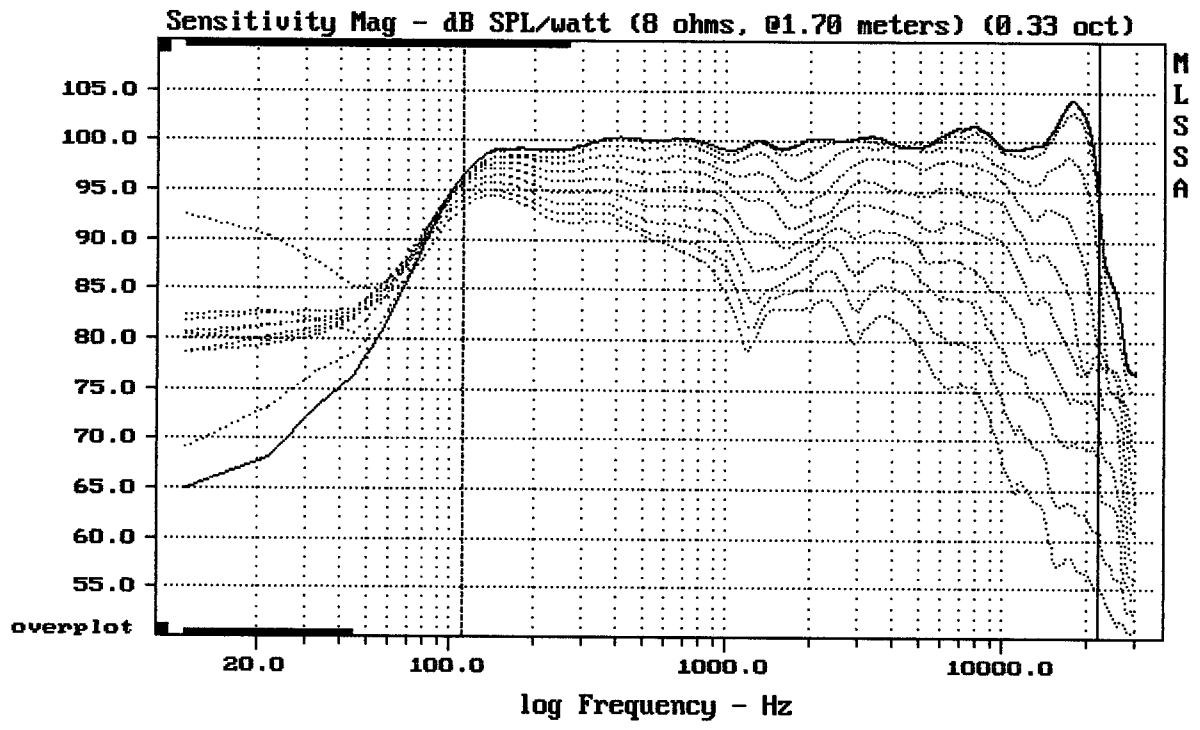
KAPPALITE 3015 + BMS4555 + HF94

MLSSA: Frequency Domain



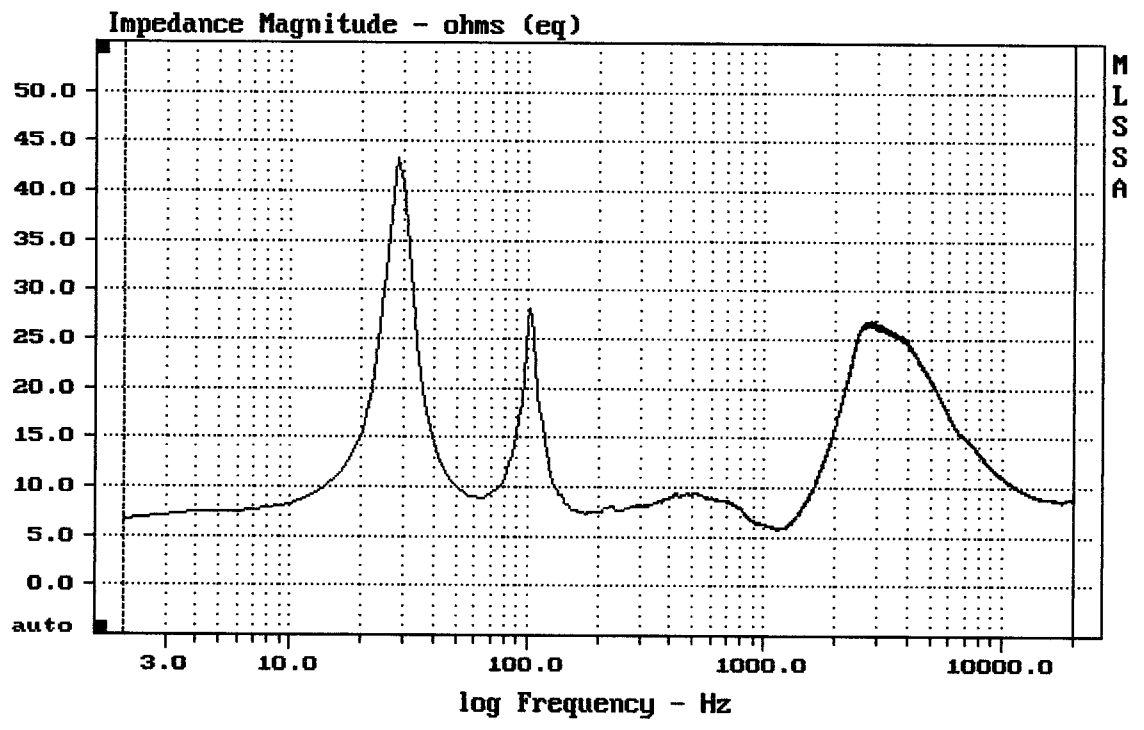
mean: $-6.451e-005$, rms: 0.002028, std: 0.002027, max: 0.01042, min: -0.002799

KAPPALITE 3015 + BMS4555 + HF94



Overlay Compare: dev= +29/-14, std= 11, avg= -32

MLSSA: Frequency Domain



mean: 12.79, rms: 13.97, std: 5.623, max: 43.37, min: 5.795

kappalite 3015 + BMS 4555 + HF94