

## Sestava RCF L15/554K + B&C Speakers DE750TN + Megaton C9090

### Osazení:

- RCF L15/554K 8/Ohm

<http://eshop.prodance.cz/DetailPage.asp?DPG=80718>

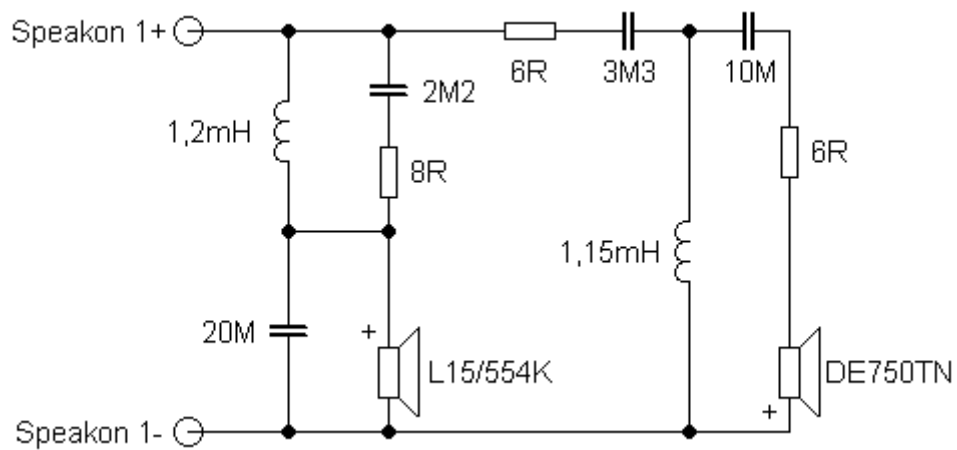
- B&C Speakers DE750TN 8/Ohm

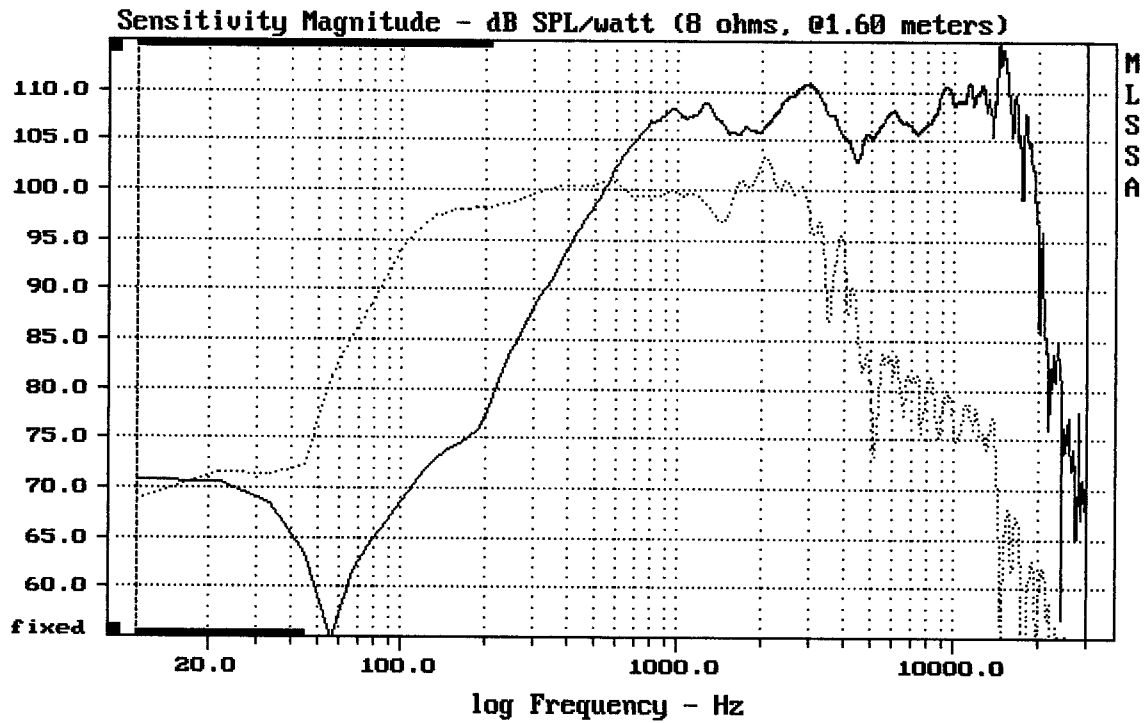
<http://eshop.prodance.cz/DetailPage.asp?DPG=82328>

- Megaton C9090

<http://eshop.prodance.cz/DetailPage.asp?DPG=84643>

### Schéma výhybky:

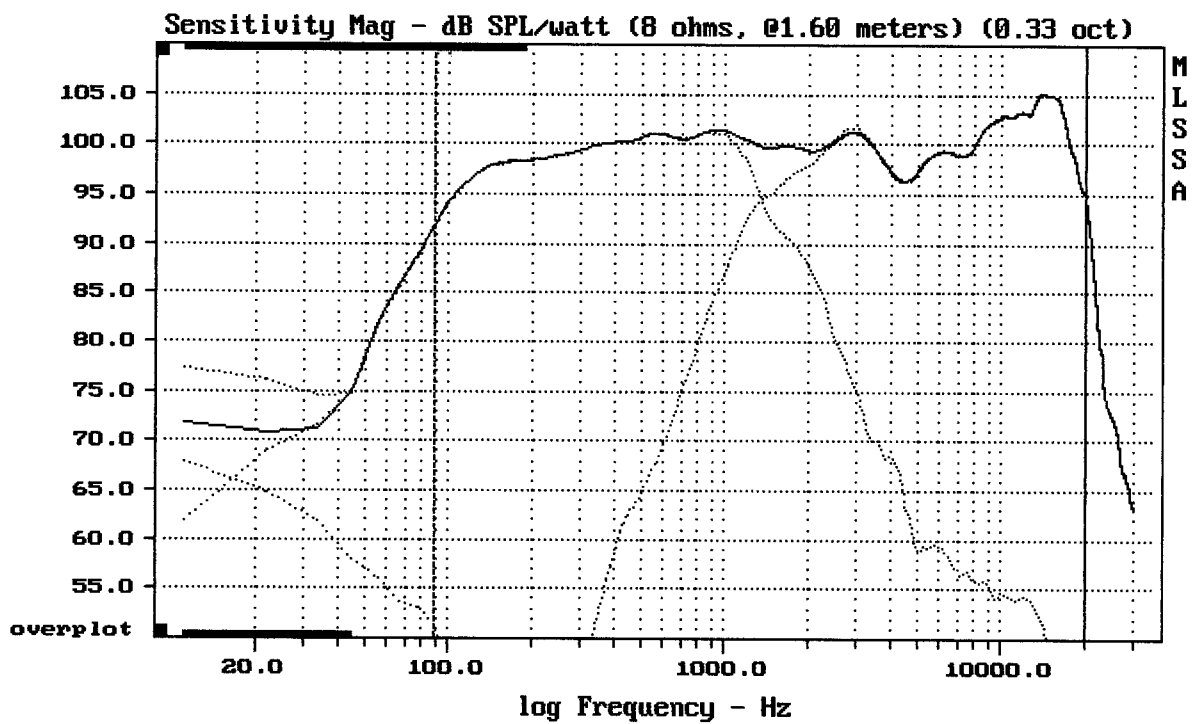




CURSOR:  $dy = -29.6429$   $x = 30007.1014$  (2704)

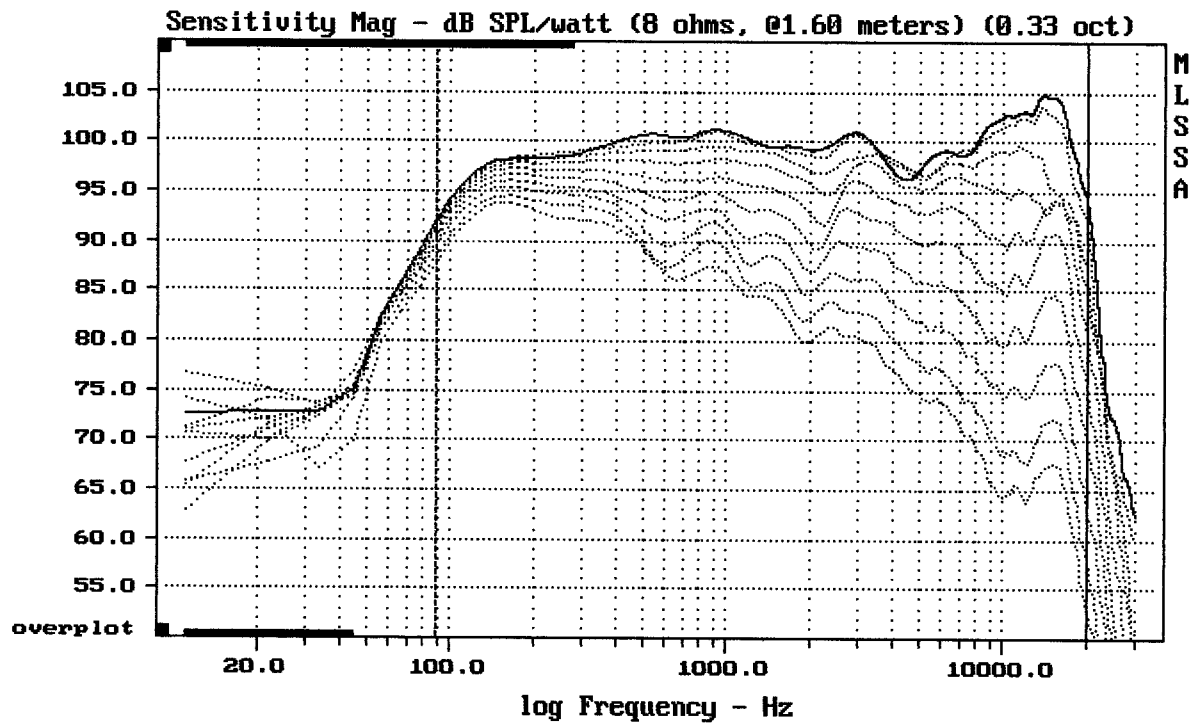
L15/554K + DE750 + C9090

MLSSA: Frequency Domain



Level (89:20000 Hz) = 100.22 dB SPL/watt (8 ohms, @1.60 meters) (0.33 oct)

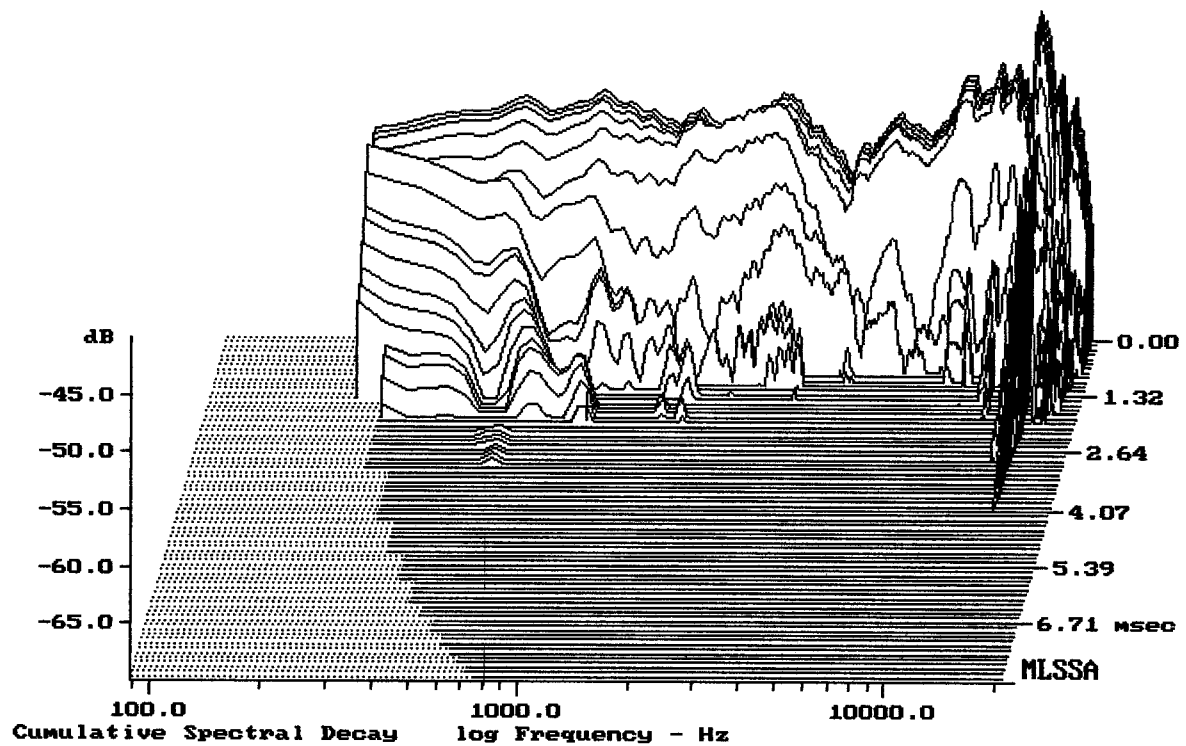
L15/554K + DE750 + C9090



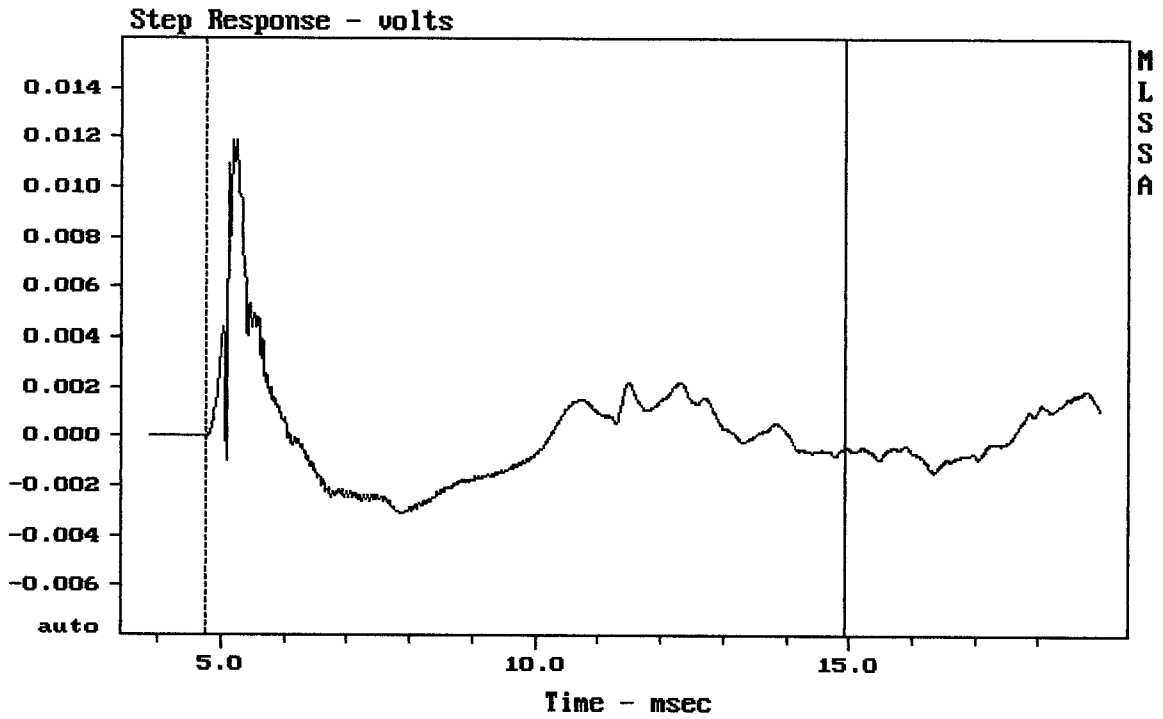
Overlay Compare: dev= +27/-11, std= 8.9, avg= -31

L15/554K + DE750 + C9090

MLSSA: Frequency Domain



-68.61 dB, 977 Hz (22), 1.980 msec (19)



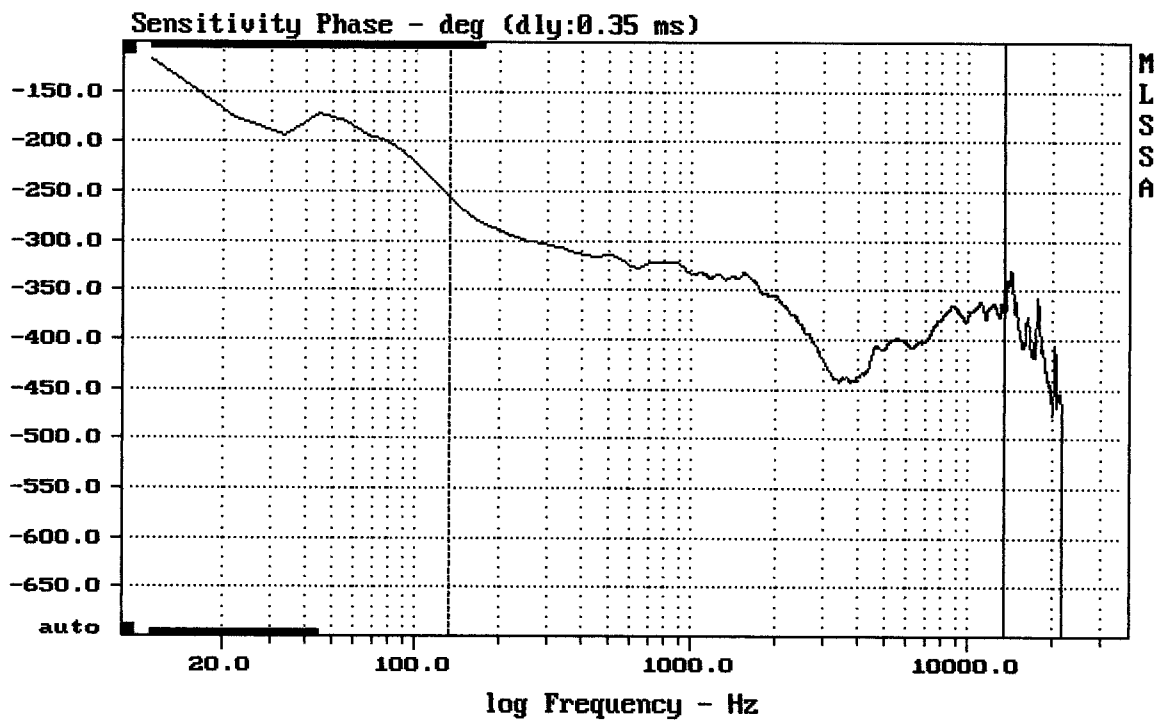

---

mean: 6.898e-005, rms: 0.002385, std: 0.002384, max: 0.01188, min: -0.00311

---

L15/554K + DE750 + C9090

MLSSA: Time Domain

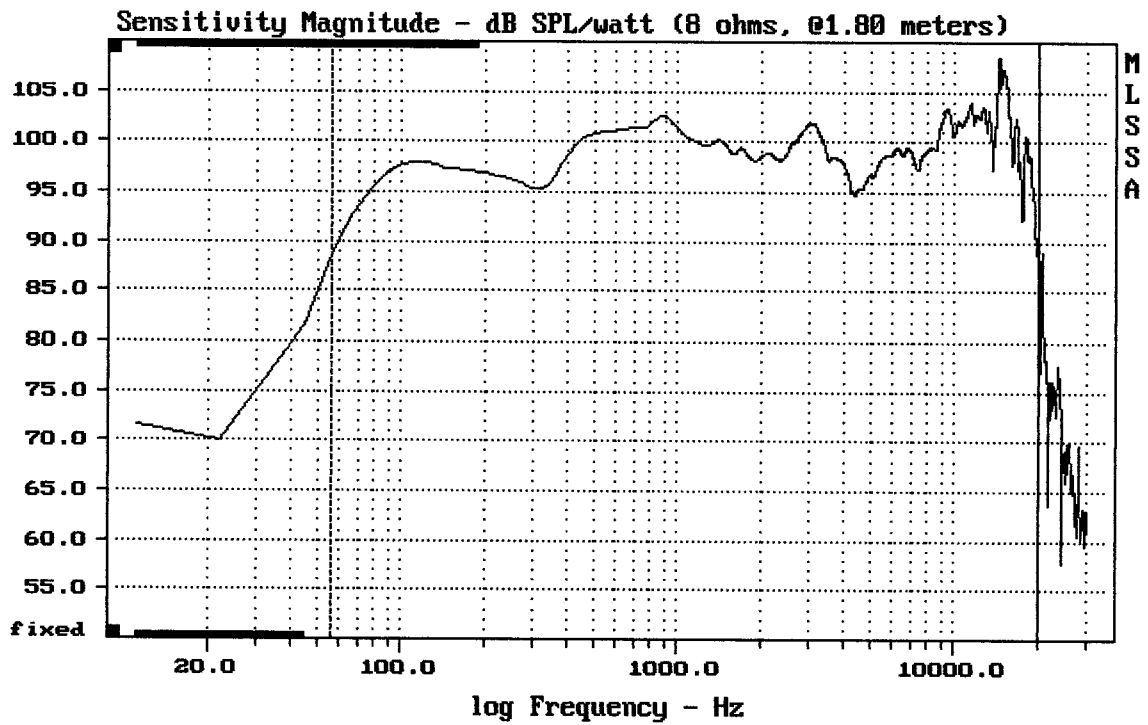



---

mean: -380.3, rms: 381.6, std: 30.91, max: -256.7, min: -442.2

---

L15/554K + DE750 + C9090




---

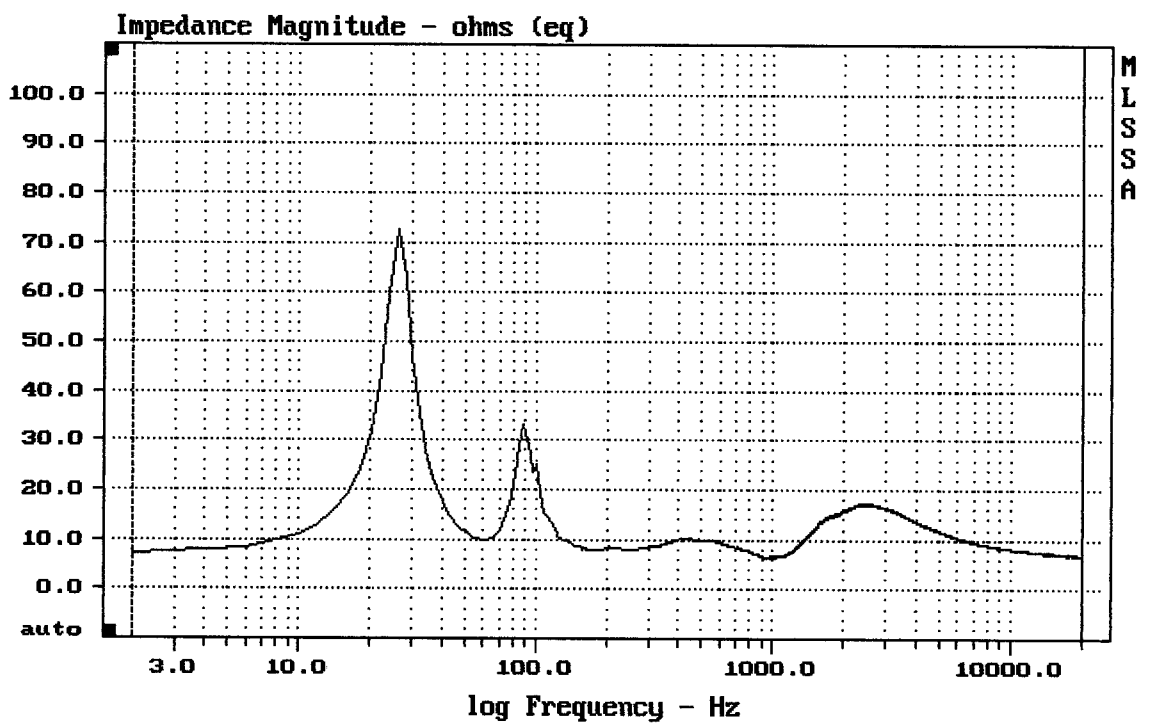
mean: 100.51, rms: 101.11, std: 2.83, max: 108.48, min: 87.92

---

L15/554K + DE750 + C9090

... jako pódiový monitor

MLSSA: Frequency Domain




---

mean: 9.311, rms: 9.833, std: 3.158, max: 72.54, min: 6.345

---

L15/554K + DE750 + C9090