

## Sestava Fane Sovereign 12-300 + Selenium D220Ti + HM25-25

### Osazení:

- Fane Sovereign 12-300 8/Ohm

<http://eshop.prodance.cz/DetailPage.asp?DPG=91519>

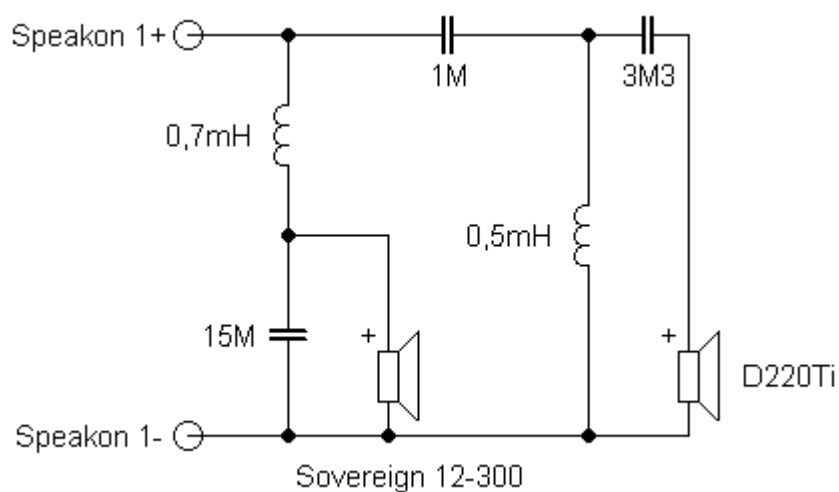
- Selenium D220Ti 8/Ohm

<http://eshop.prodance.cz/DetailPage.asp?DPG=90316>

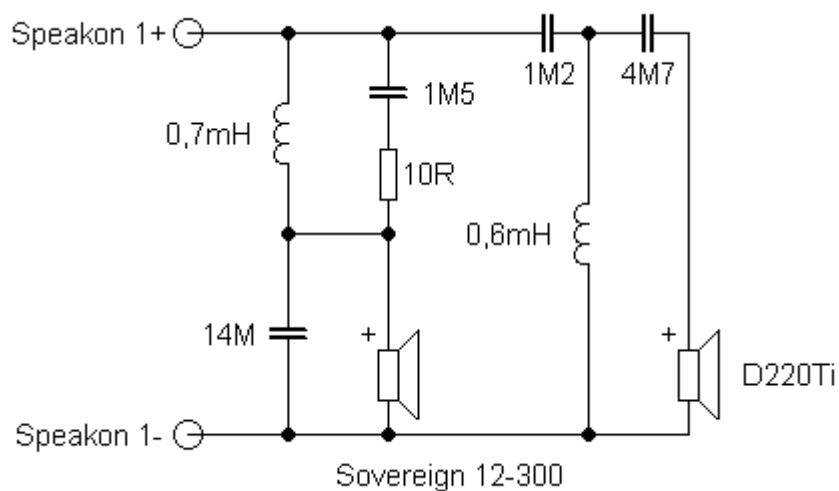
- Selenium HM25-25

<http://eshop.prodance.cz/DetailPage.asp?DPG=81673>

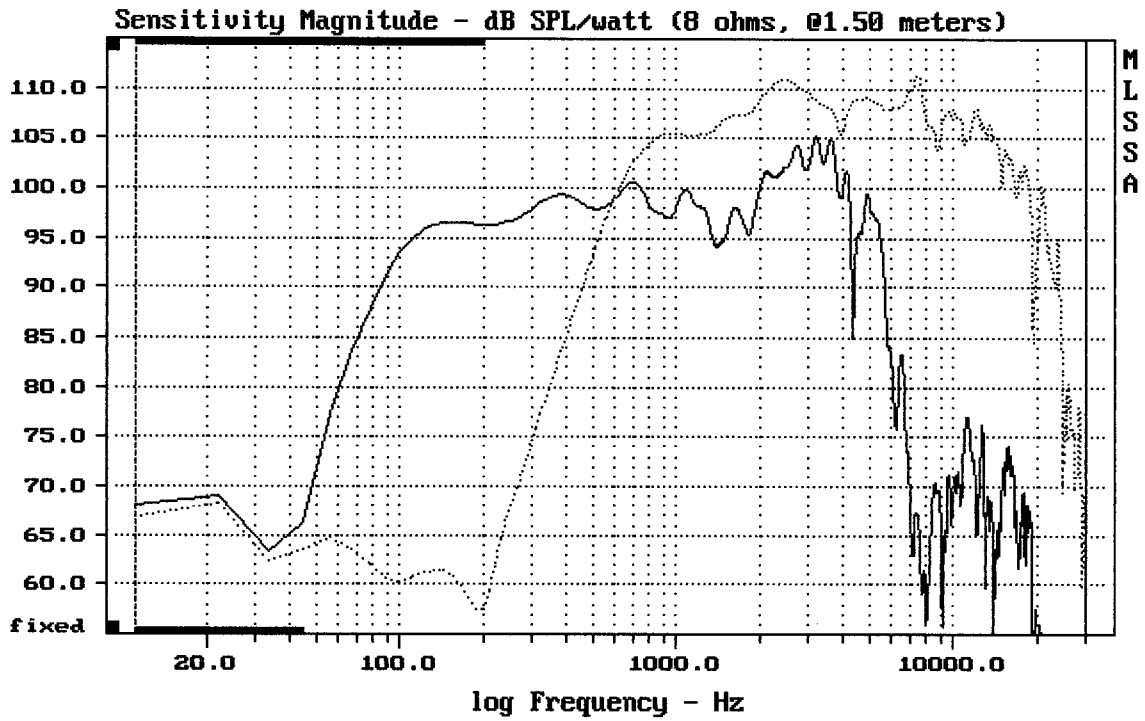
### Schémata výhybek:



**Varianta I.**



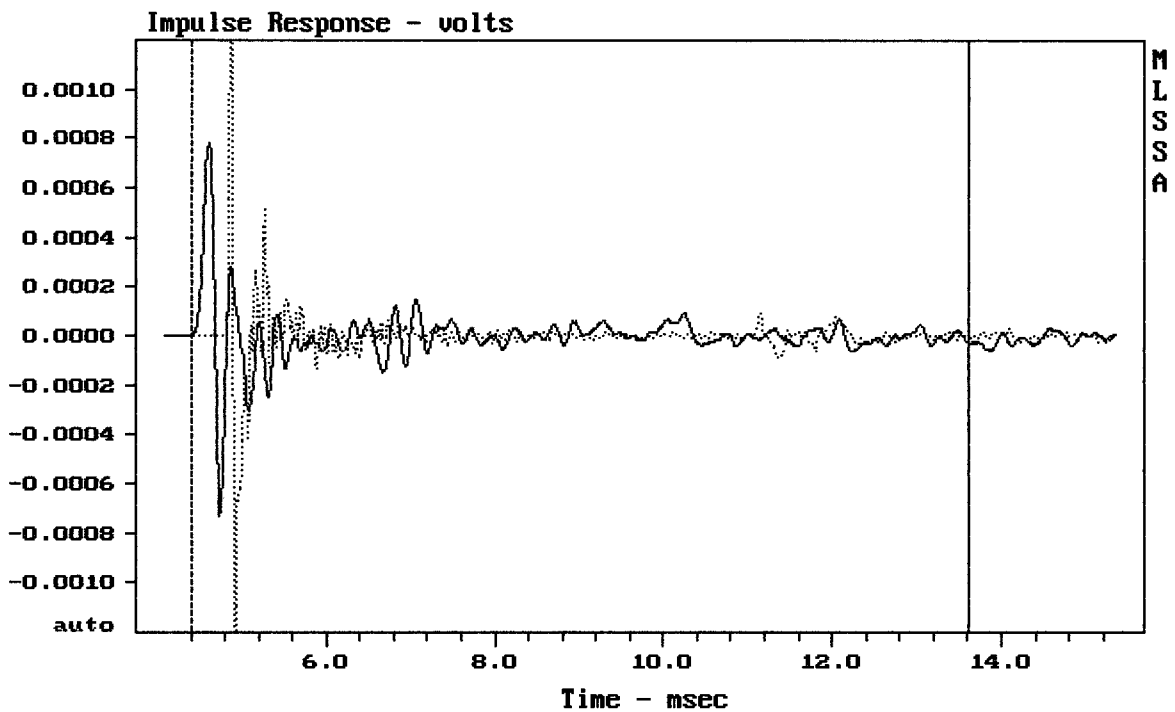
**Varianta II.**



CURSOR: dy = 43.9321 x = 30007.1014 (2704)

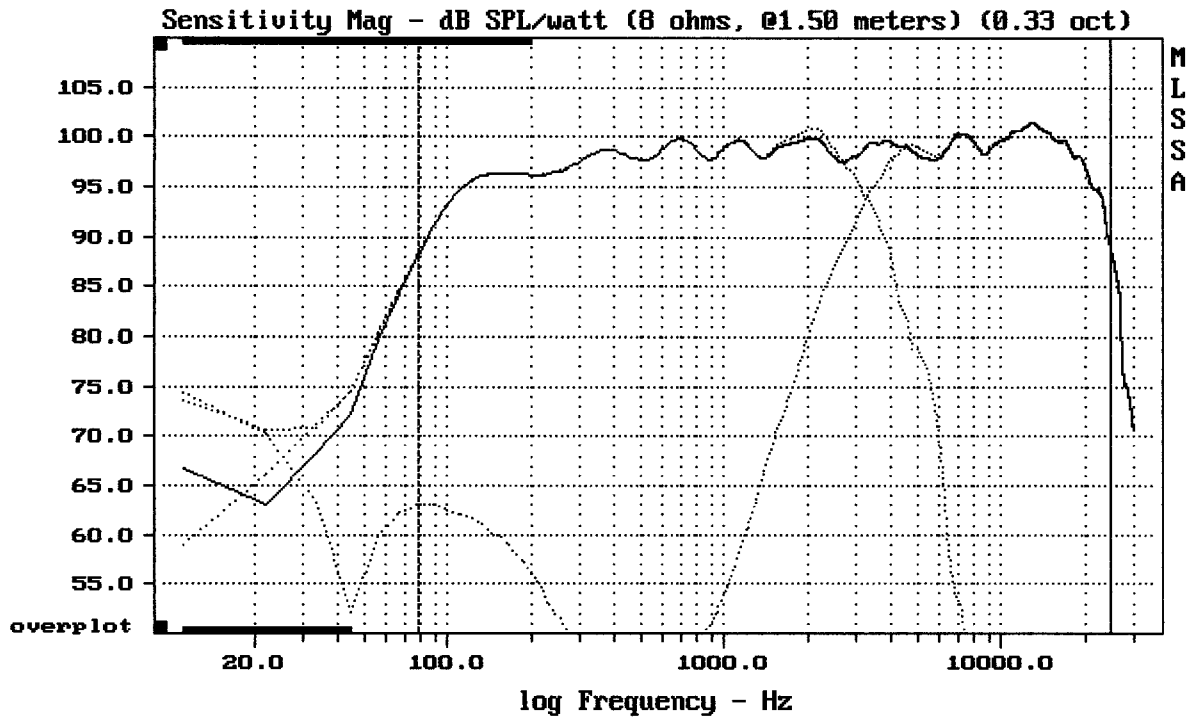
FANE SOVEREIGN 12-300 + D220TI + HM25-25

MLSSA: Frequency Domain



CURSOR: dy = 3.70727e-005 x = 13.6180 (1238)

FANE SOVEREIGN 12-300 + D220TI + HM25-25



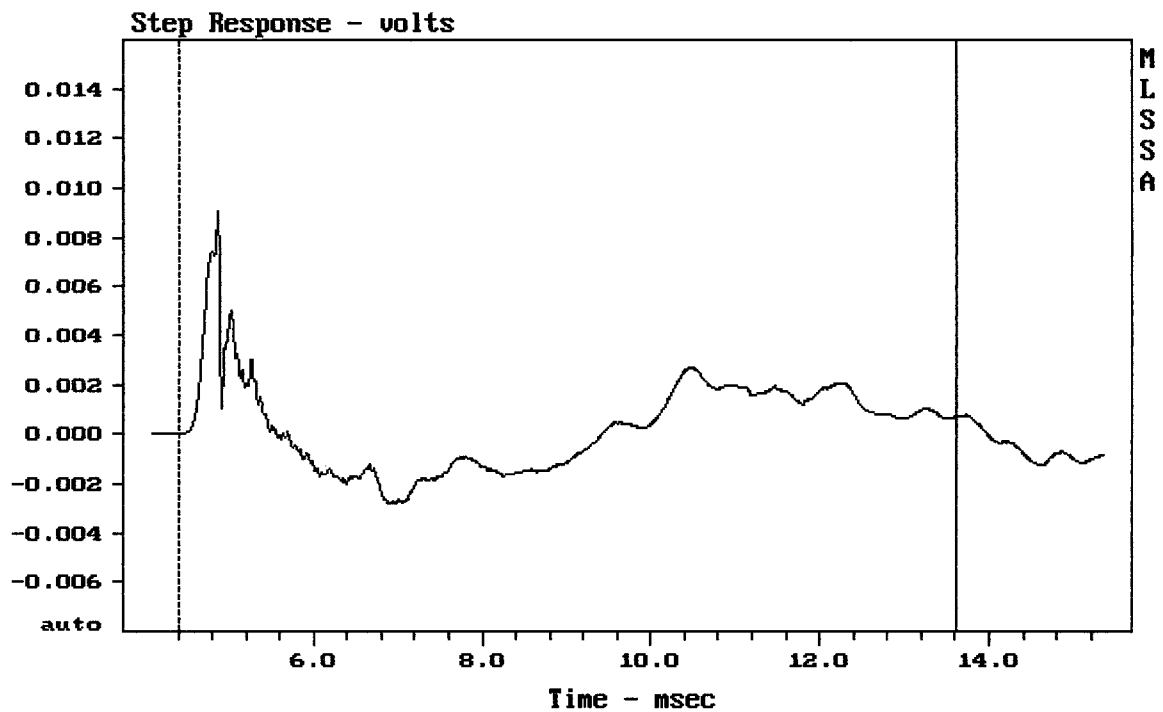

---

Level (78:24802 Hz) = 98.32 dB SPL/watt (8 ohms, @1.50 meters) (0.33 oct)

---

FANE SOVEREIGN 12-300 + D220TI + HM25-25

MLSSA: Frequency Domain

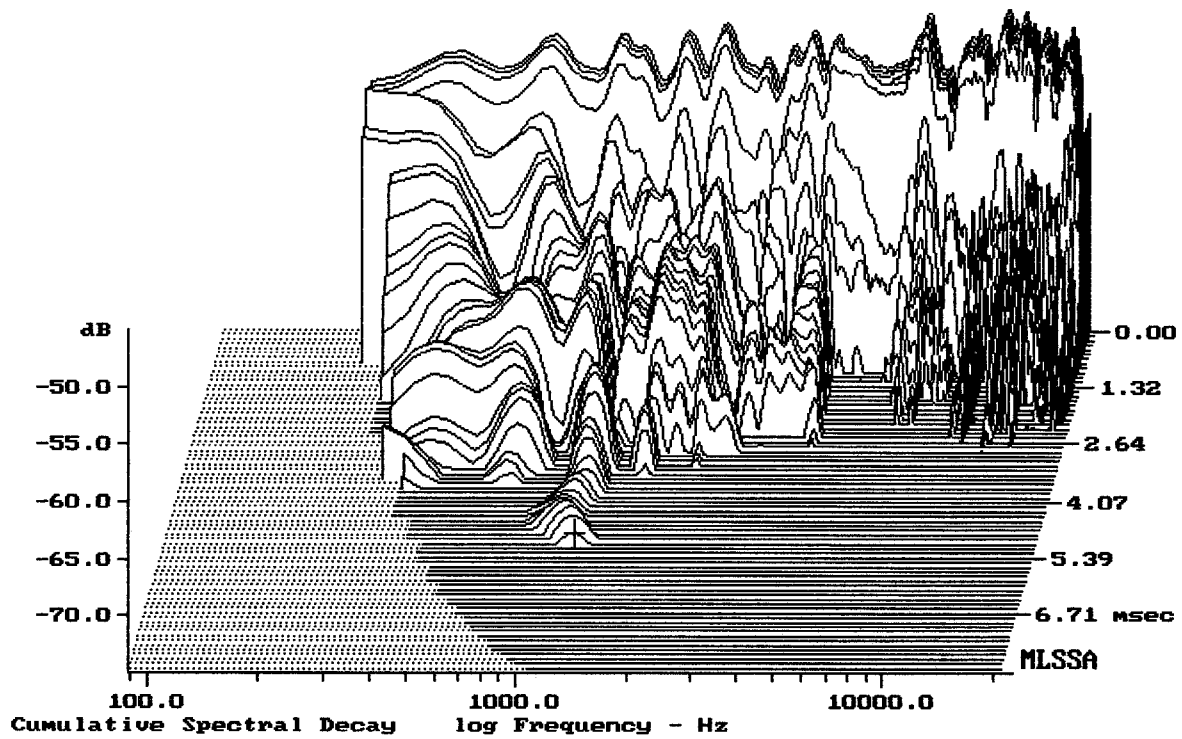



---

mean: 0.0003419, rms: 0.001888, std: 0.001857, max: 0.009064, min: -0.002888

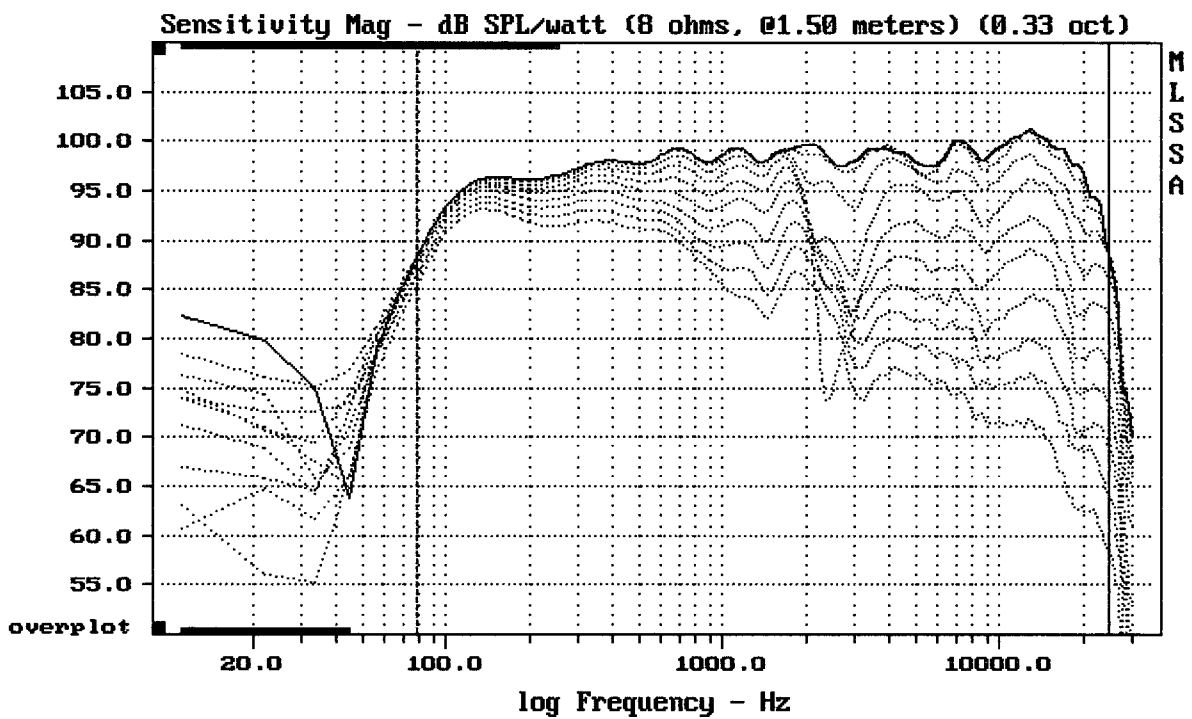
---

FANE SOVEREIGN 12-300 + D220TI + HM25-25



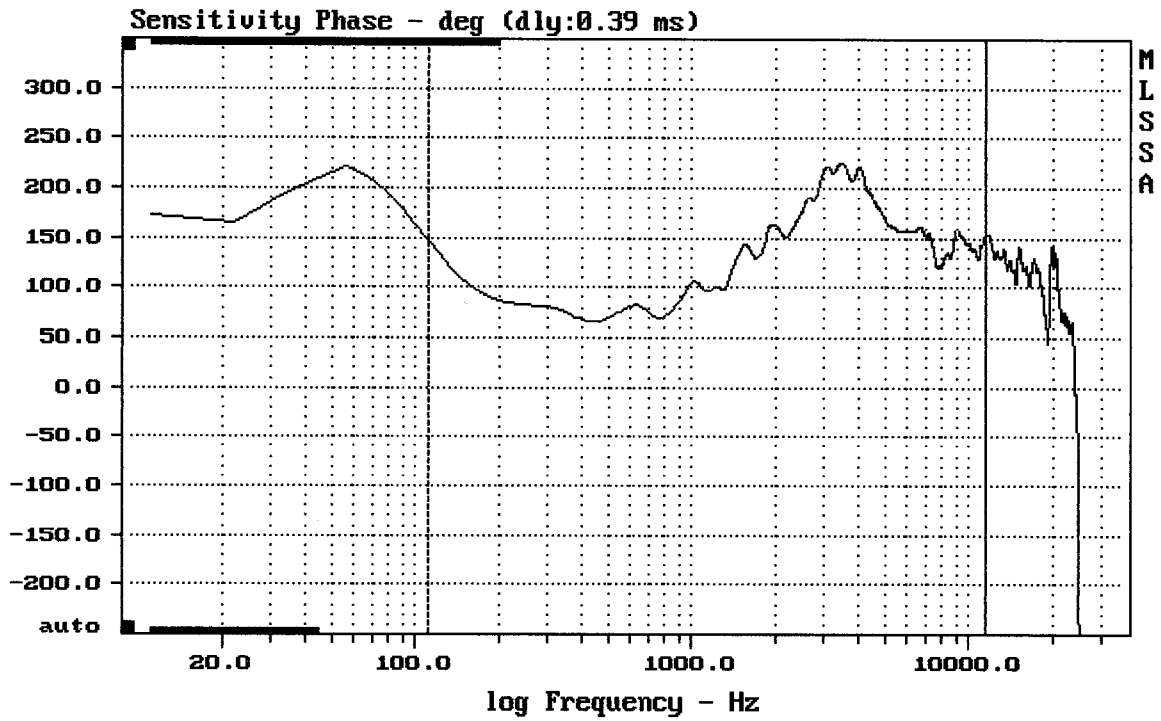
-74.01 dB, 1154 Hz (26), 5.060 msec (47)

DTTO



Overlay Compare: dev= +25/-7.7, std= 6.6, avg= -27

FANE SOVEREIGN 12-300 + D220TI + HM25-25



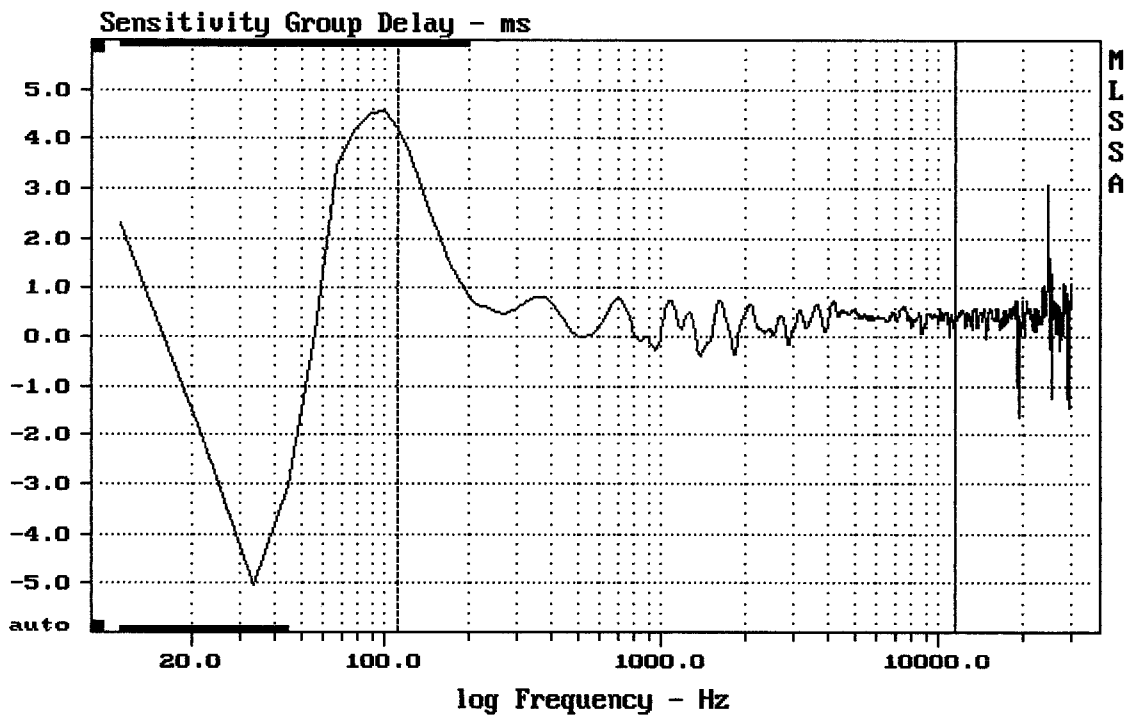

---

mean: 152.4, rms: 156.5, std: 35.38, max: 225.9, min: 64.9

---

FANE SOVEREIGN 12-300 + D220TI + HM25-25

MLSSA: Frequency Domain

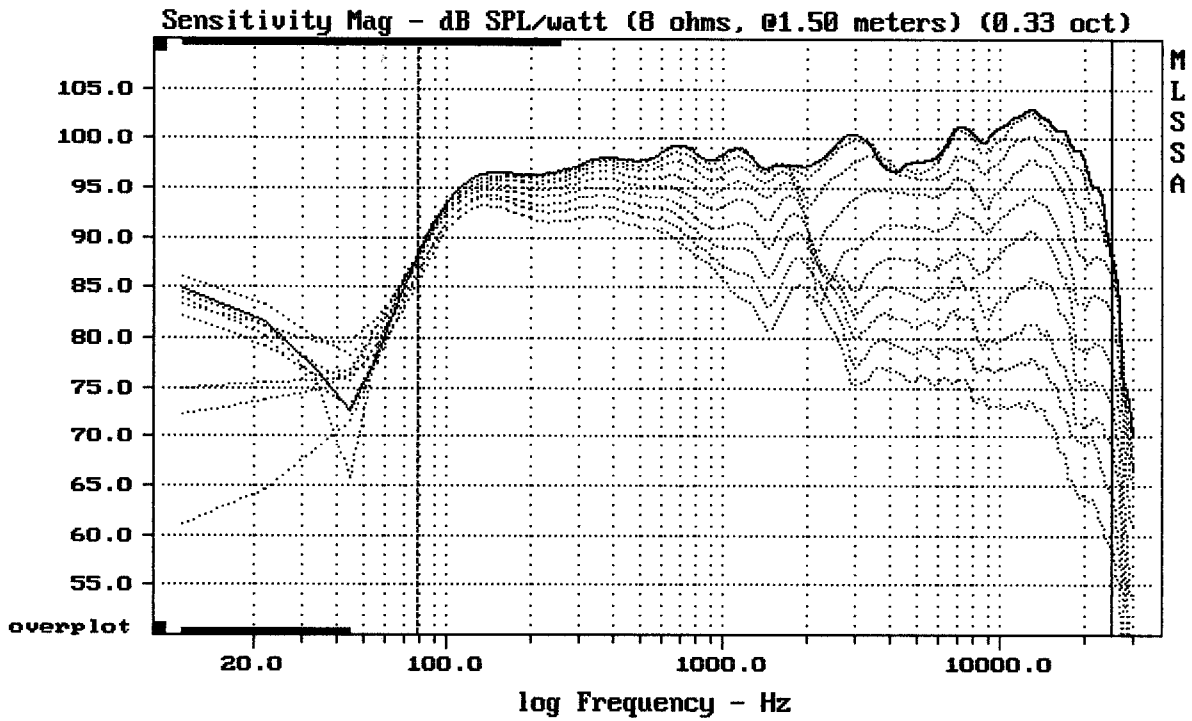



---

mean: 0.3867, rms: 0.4807, std: 0.2856, max: 4.205, min: -0.387

---

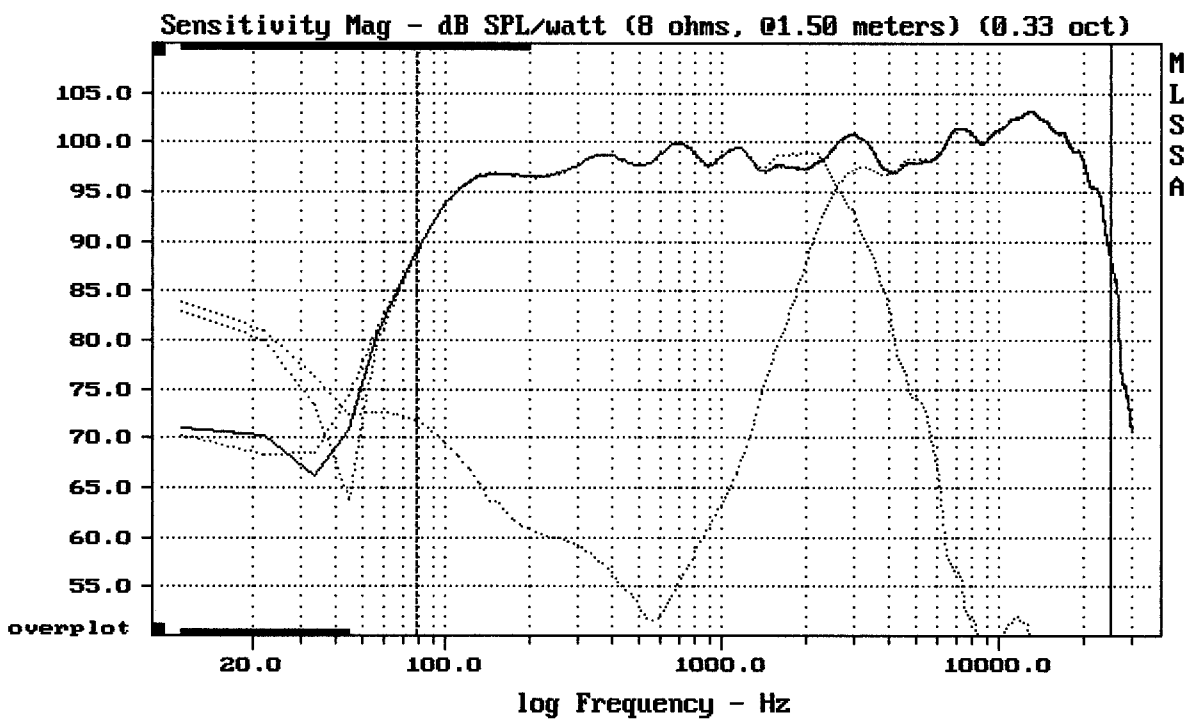
FANE SOVEREIGN 12-300 + D220TI + HM25-25



Overlay Compare: dev= +25/-7.8, std= 6.5, avg= -27

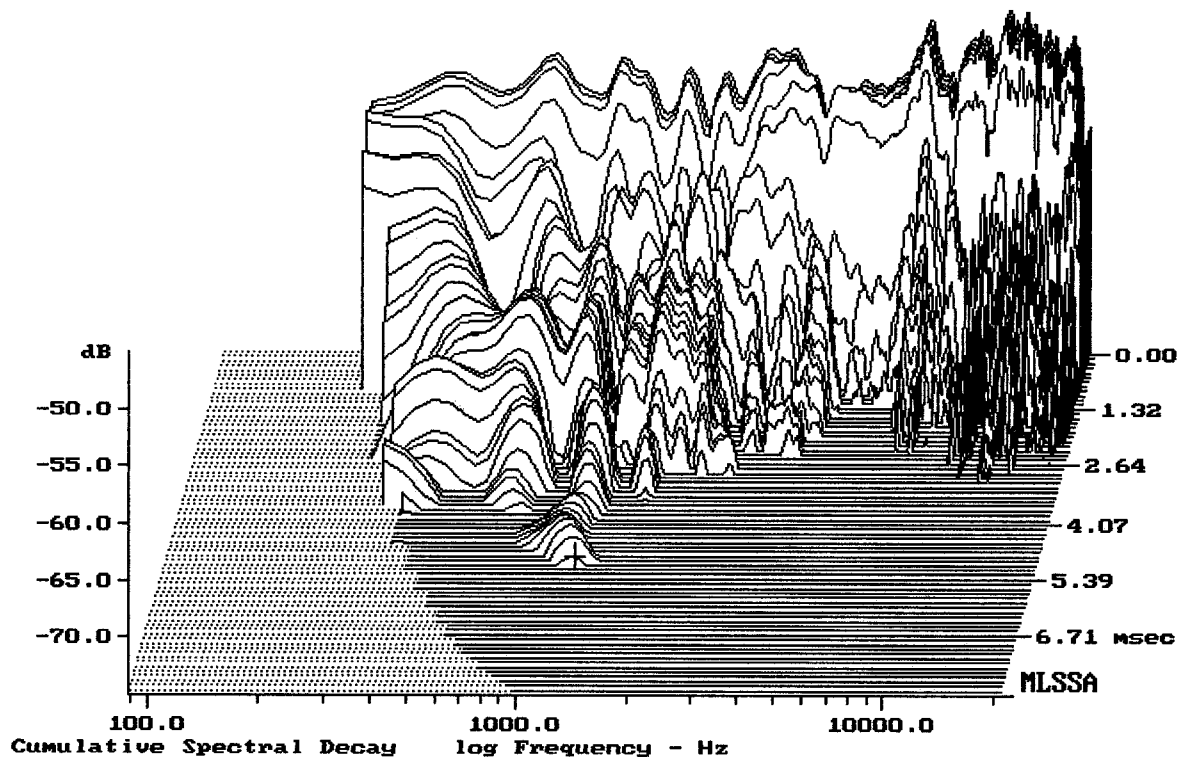
FANE SOVEREIGN 12-300 + D220TI + HM25-25

MLSSA: Frequency Domain



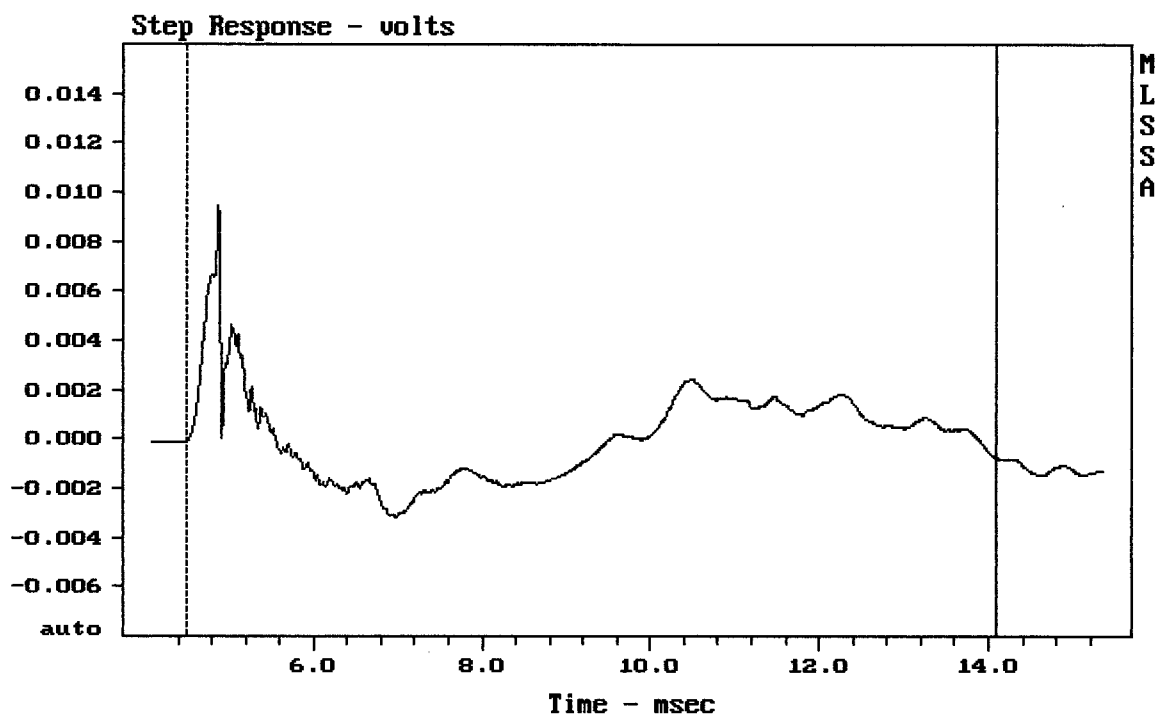
Level (78:25002 Hz) = 98.75 dB SPL/watt (8 ohms, @1.50 meters) (0.33 oct)

FANE SOVEREIGN 12-300 + D220TI + HM25-25



-74.18 dB, 1154 Hz (26), 5.060 msec (47)

DTTO



mean: 8.864e-005, rms: 0.001845, std: 0.001842, max: 0.009465, min: -0.003183

FANE SOVEREIGN 12-300 + D220TI + HM25-25