

Sestava Fane Colossus 12MB + B&C Speakers DE610 + Megaton B8575

Osazení:

- Fane Colossus 12MB 8/Ohm

<http://eshop.prodance.cz/DetailPage.asp?DPG=85020>

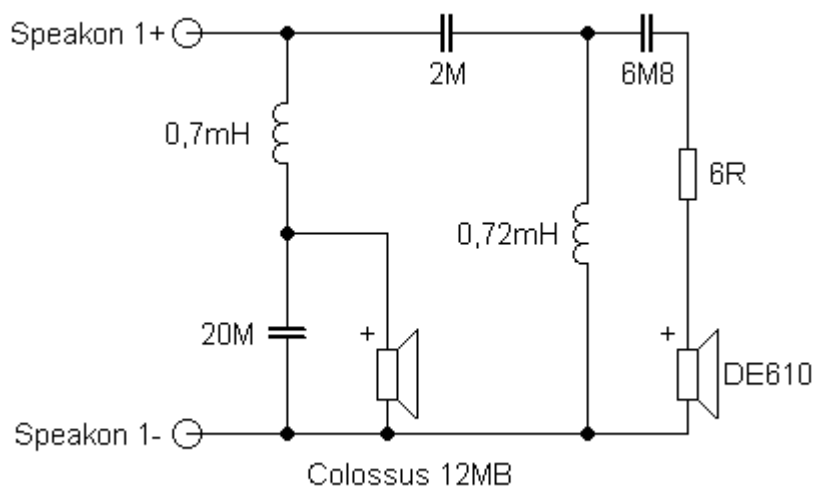
- B&C Speakers DE610 8/Ohm

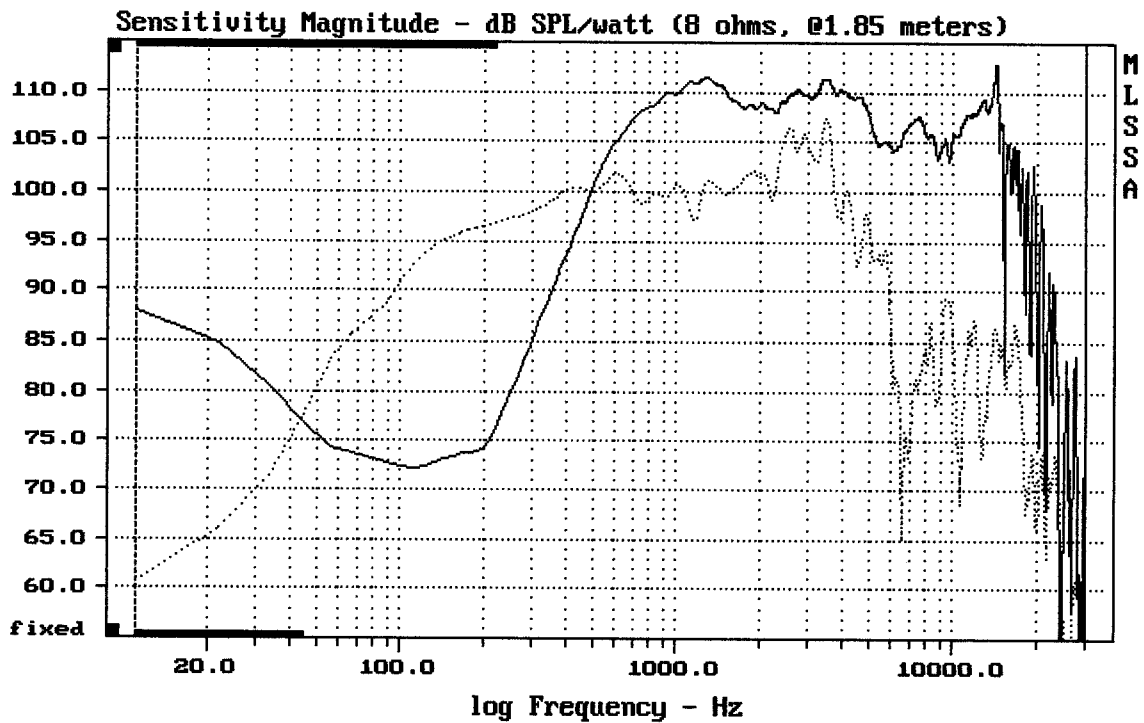
<http://eshop.prodance.cz/DetailPage.asp?DPG=82315>

- Megaton B8575

<http://eshop.prodance.cz/DetailPage.asp?DPG=84261>

Schéma výhybky:

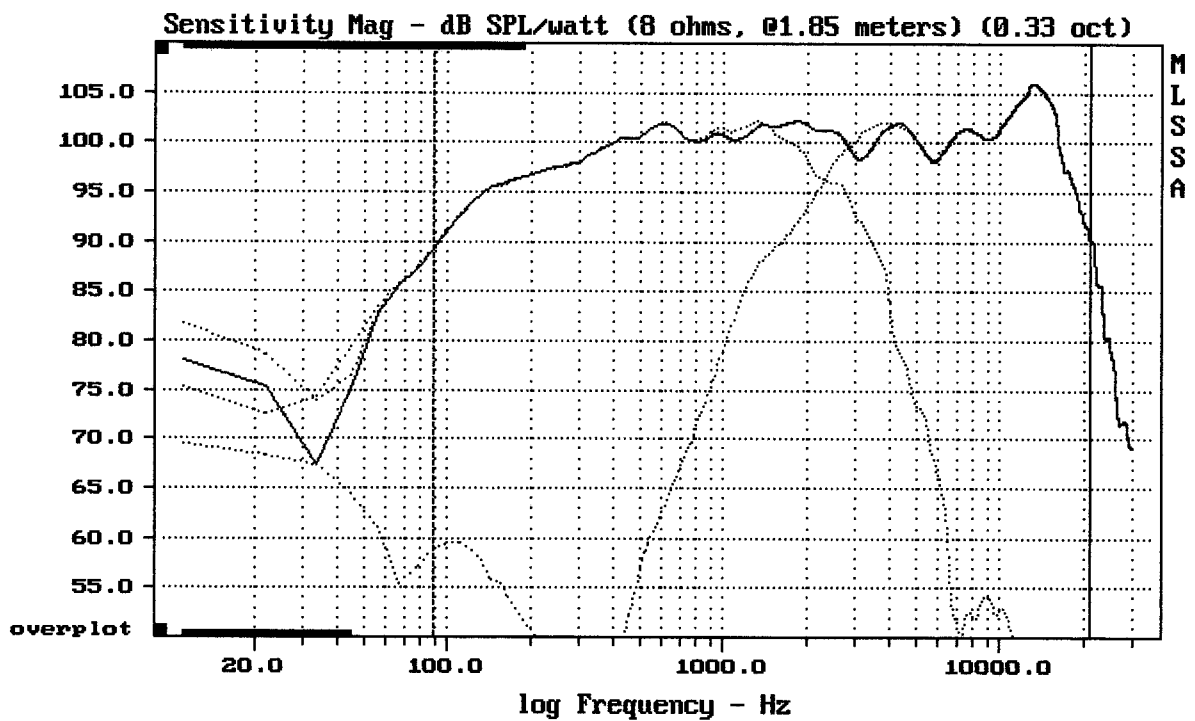




CURSOR: $dy = -17.4668$ $x = 30007.1014$ (2704)

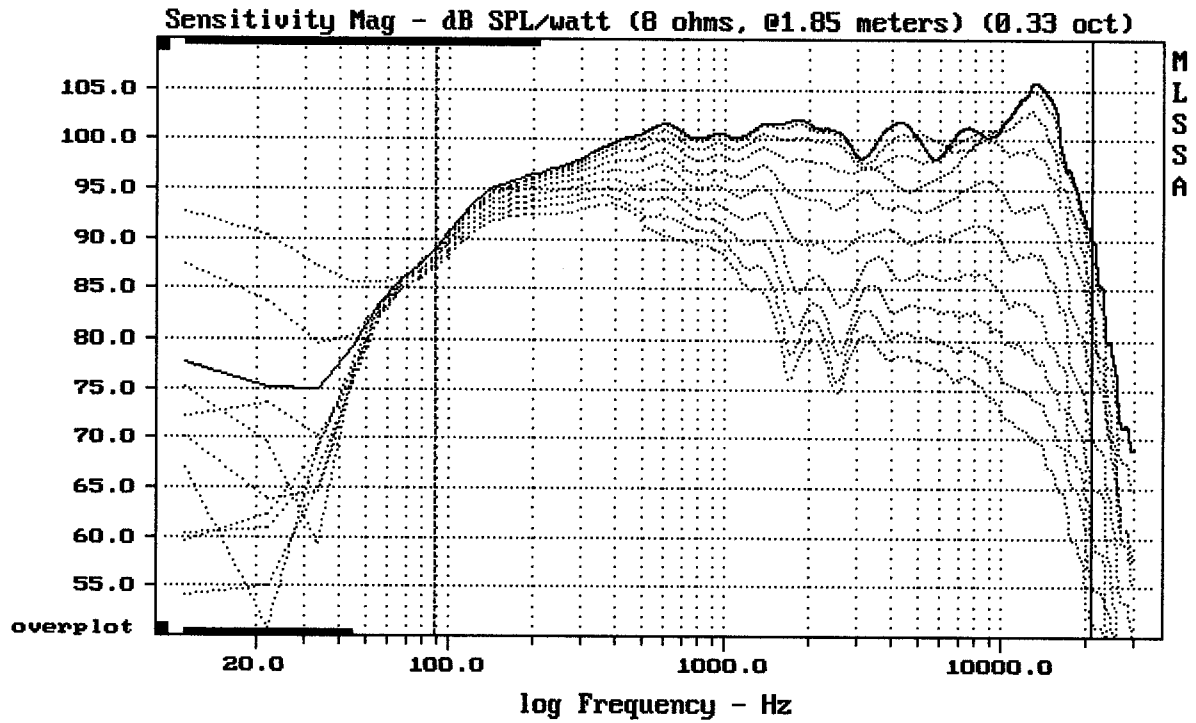
COL12MB + DE610 + B8575

MLSSA: Frequency Domain



Level (89:21007 Hz) = 100.34 dB SPL/watt (8 ohms, @1.85 meters) (0.33 oct)

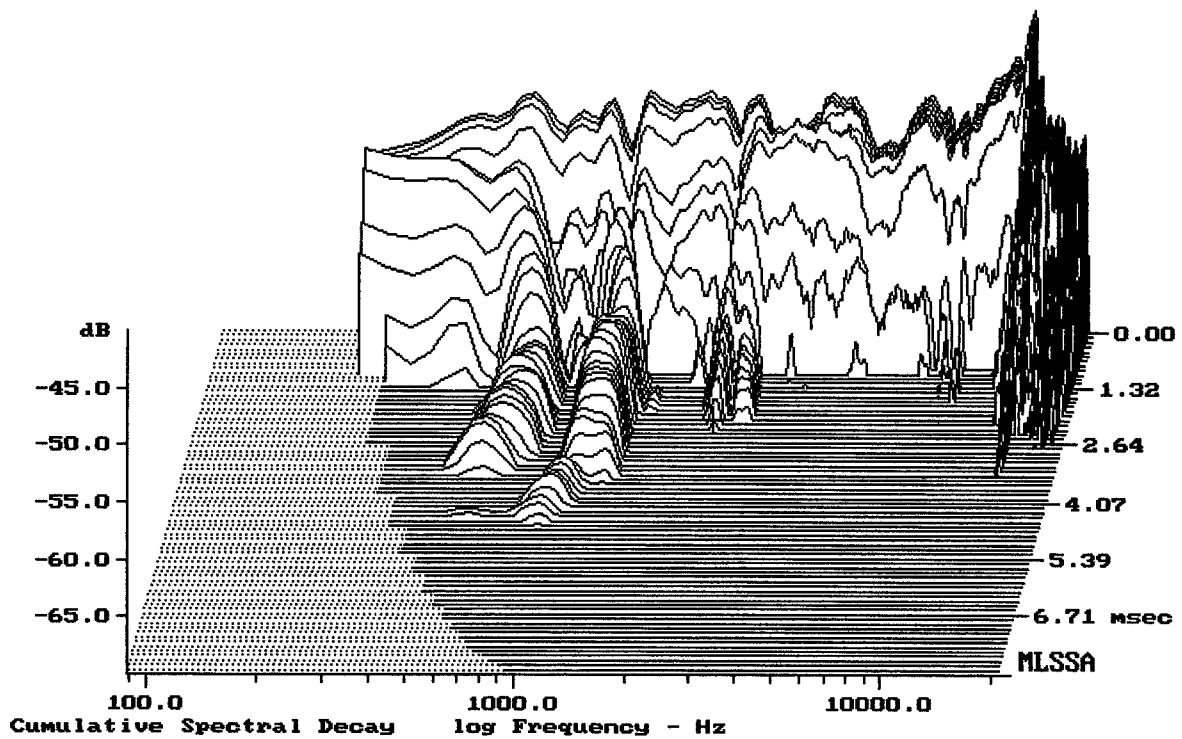
COL12MB + DE610 + B8575



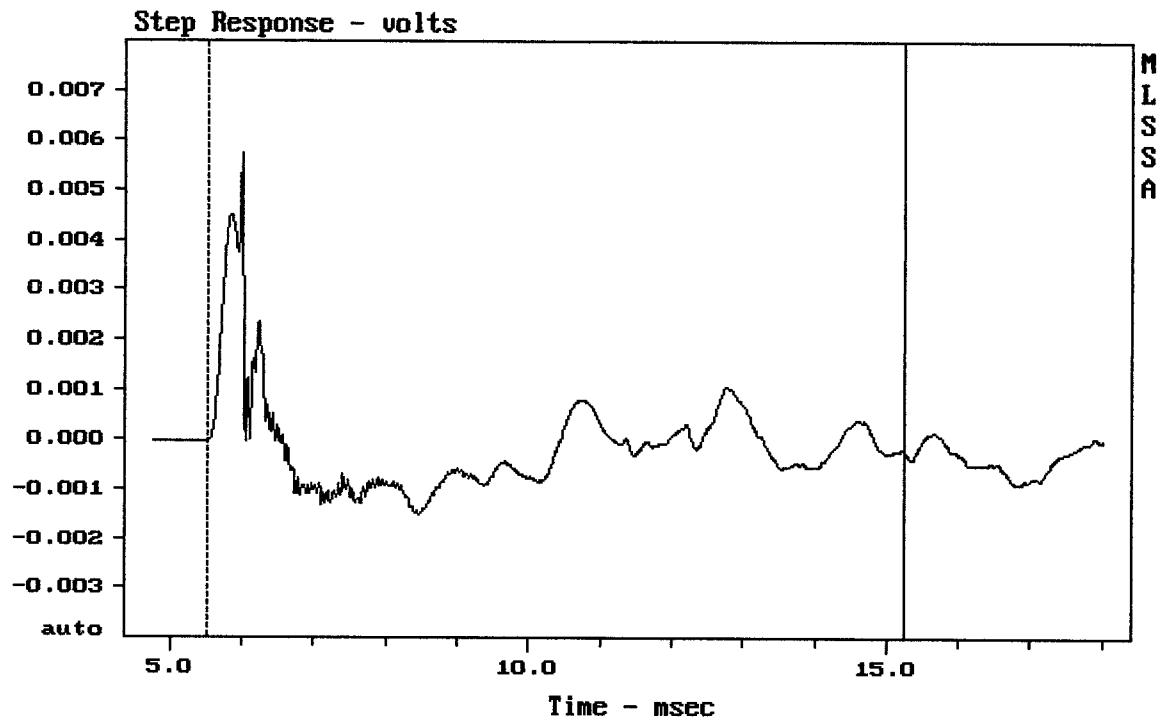
Overlay Compare: dev= +27/-9.9, std= 7.7, avg= -29

COL12MB + DE610 + B8575

MLSSA: Frequency Domain



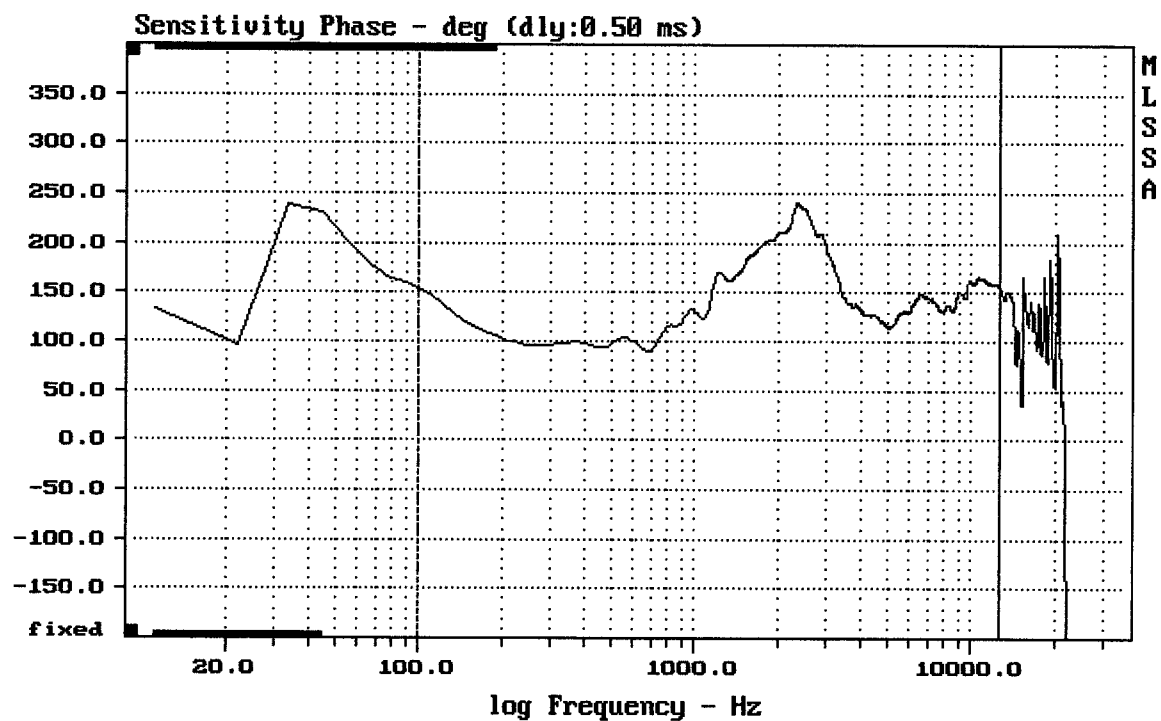
-69.21 dB, 2264 Hz (51), 2.310 msec (22)



mean: -0.0001101, rms: 0.00103, std: 0.001024, max: 0.005752, min: -0.001497

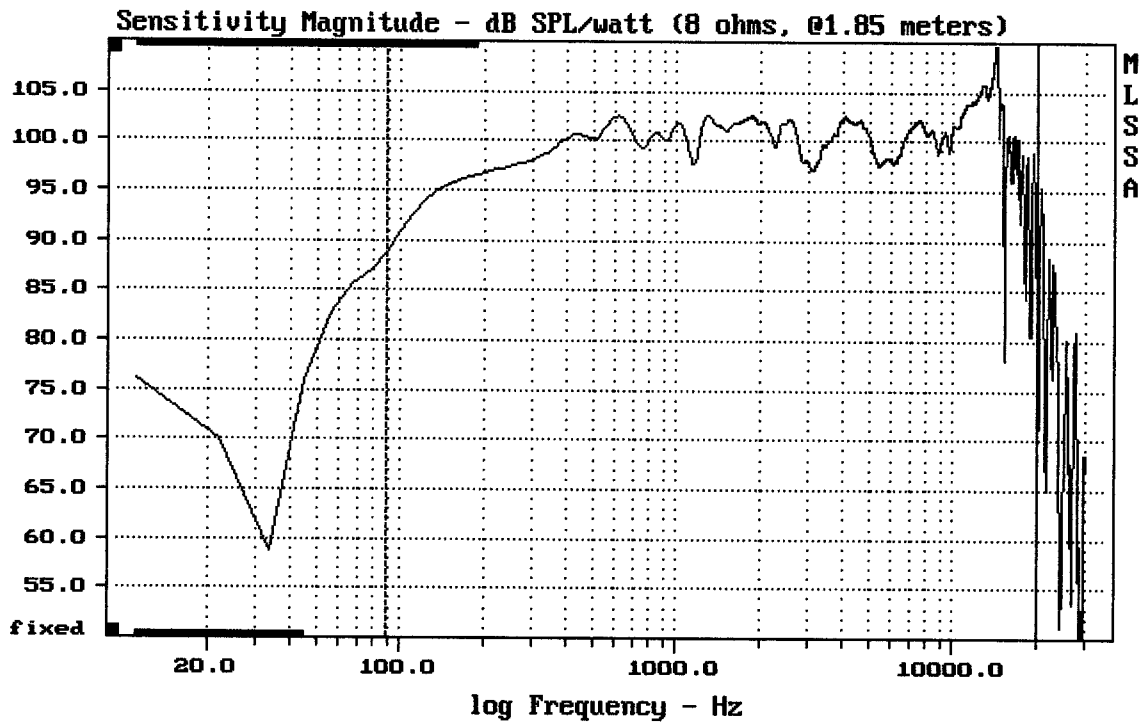
COL12MB + DE610 + B8575

MLSSA: Time Domain



mean: 150.4, rms: 153.2, std: 29.15, max: 240, min: 90.74

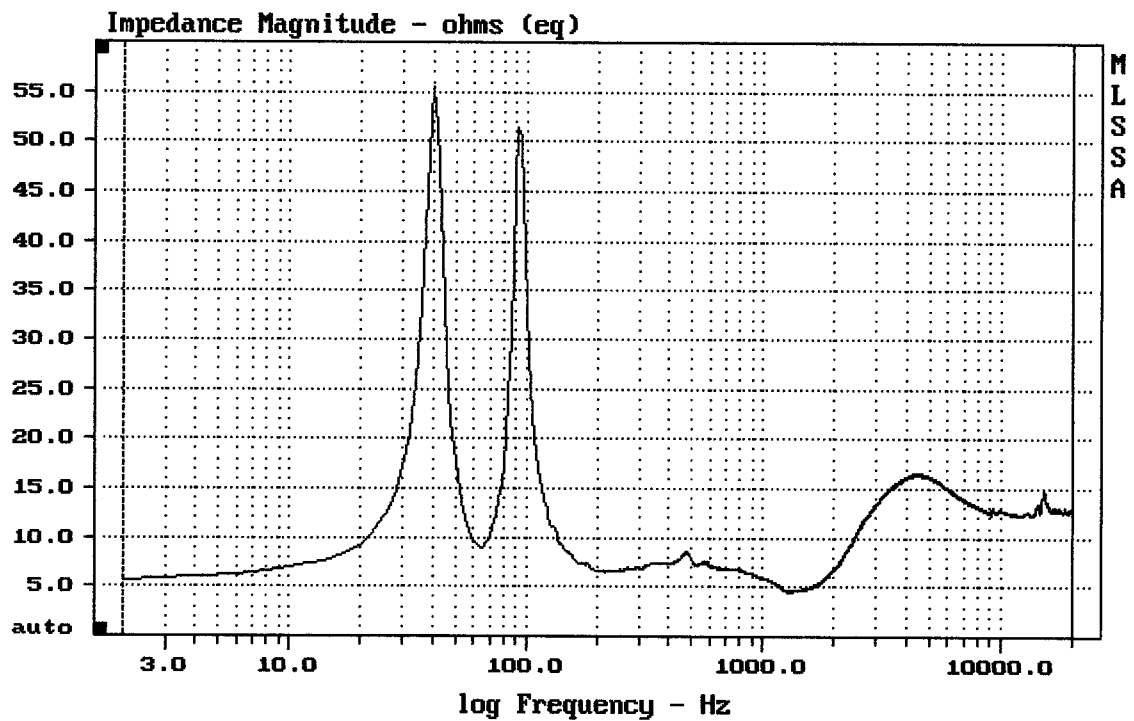
COL12MB + DE610 + B8575



mean: 100.94, rms: 101.70, std: 3.14, max: 109.63, min: 78.08

COL12MB + DE610 + B8575

MLSSA: Frequency Domain



mean: 12.61, rms: 12.91, std: 2.79, max: 55.44, min: 4.529

COL12MB + DE610 + B8575