

MLSSA SPO 4.0D #960903-3057-3075

Measured Data

QC Limits

Line	Parameter	Value	Units
1	RMSE-free	0.45	Ohms
2	Fs	61.55	Hz
3	Re	6.08	Ohms[dc]
4	Res	131.01	Ohms
5	Qms	8.15	
6	Qes	0.38	
7	Qts	0.36	
8	L1	1.00	mH
9	L2	1.42	mH
10	R2	4.83	Ohms
11	RMSE-load	0.77	Ohms
12	Vas(Sd)	44.79	liters
13	Mms	59.09	grams
14	Cms	113	$\mu\text{M}/\text{Newton}$
15	B1	19.16	Tesla-M
16	SPLref(Sd)	96.2	dB[Re]
17	Rub-index	0.00	

Method: Mass-loaded (80.00 grams)

Area (Sd): 530.93 sq cm

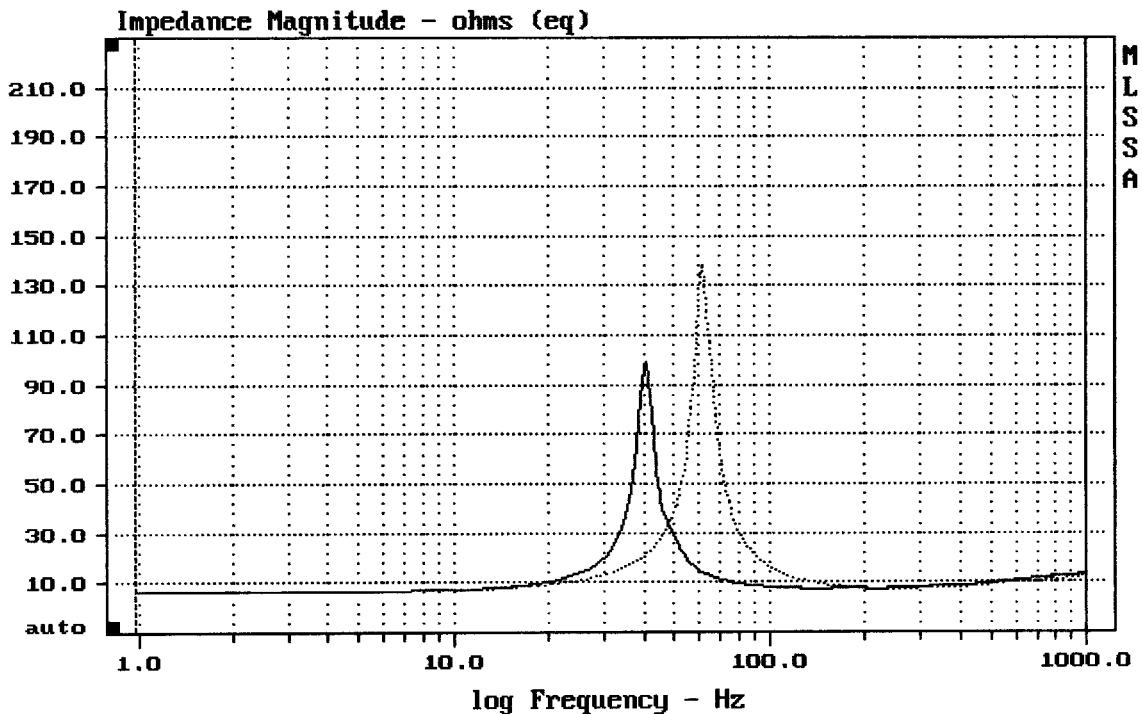
DCR mode: Measure (-0.06 ohms)

QC file: CLOSED

Analysis successful. Shift in Fs = -34.2% (-20% to -50% is recommended).

RCF PRECISION LF12G300

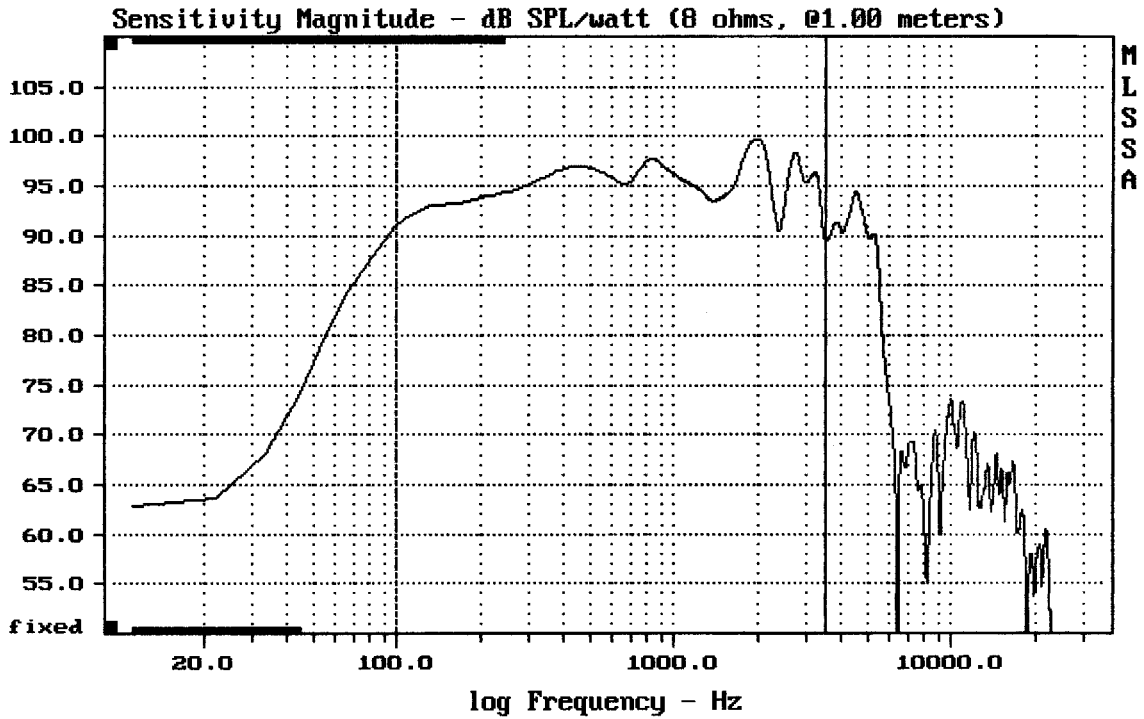
MLSSA: Parameters



CURSOR: dy = -0.784401 x = 1000.9766 (1025)

DTT0

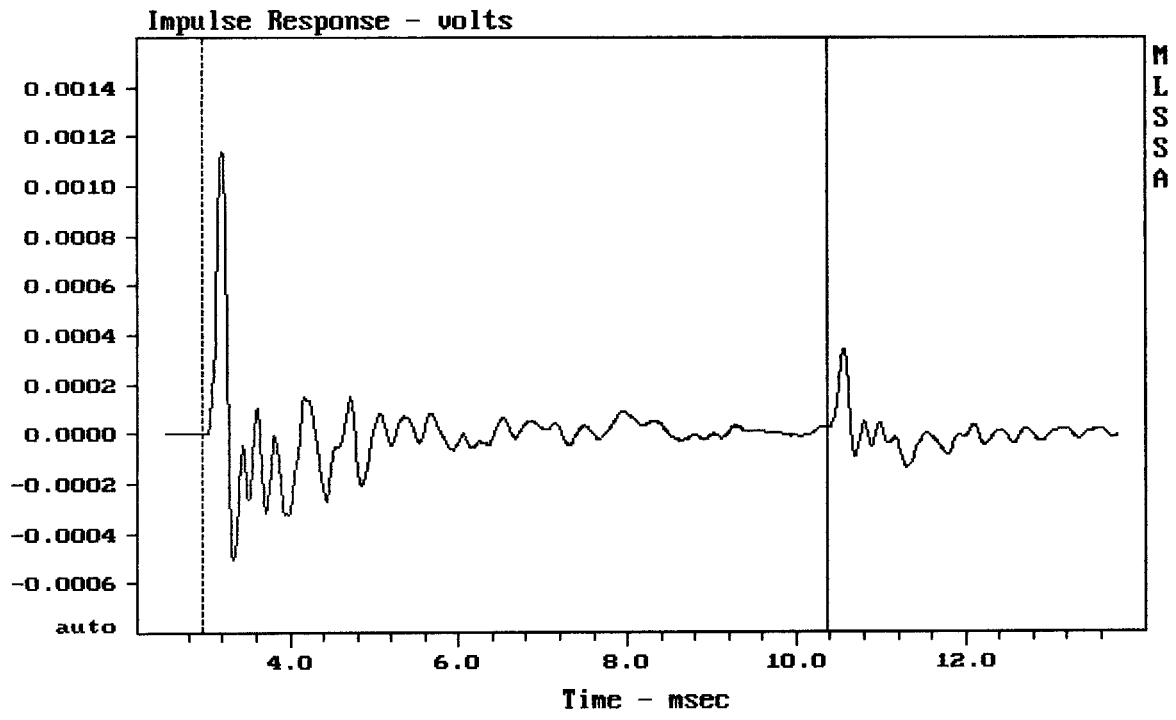
MLSSA: Frequency Domain



Level (100:3496 Hz) = 95.55 dB SPL/watt (8 ohms, @1.00 meters)

RCF PRECISION LF12G300

MLSSA: Frequency Domain



mean: 1.328e-006, rms: 0.0001643, std: 0.0001643, max: 0.001141, min: -0.00050

RCF PRECISION LF12G300