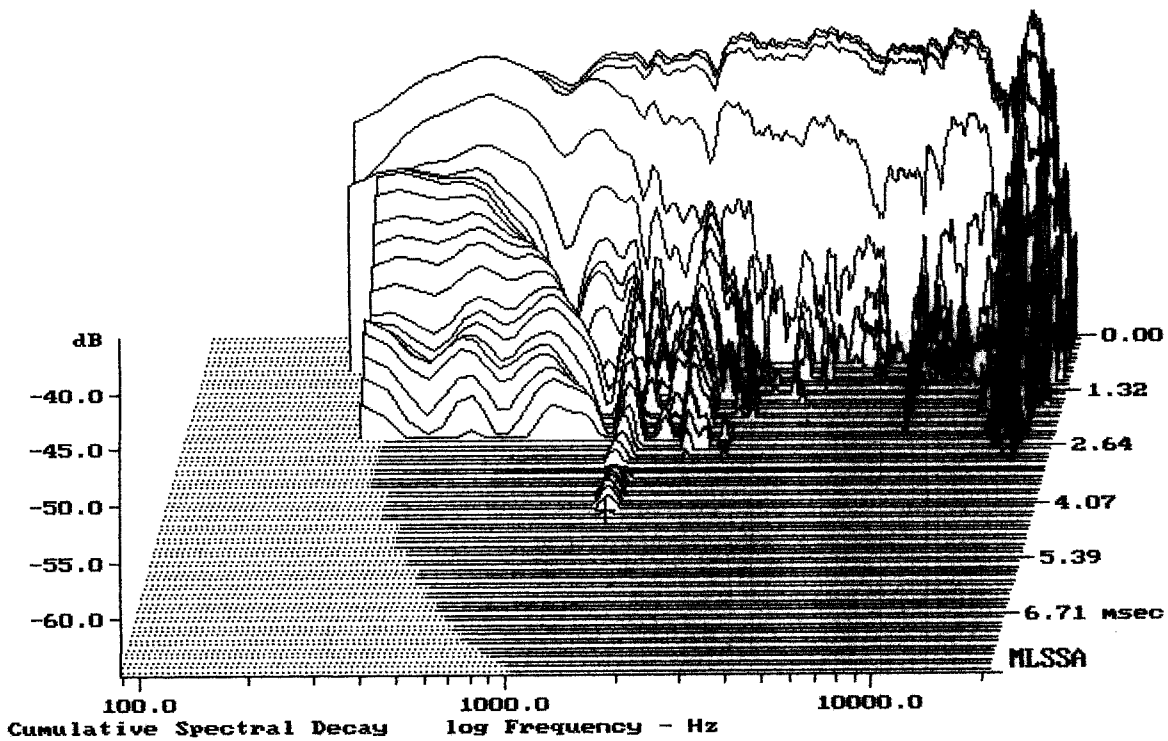


Level (400:17911 Hz) = 112.14 dB SPL/watt (8 ohms, @2.00 meters)

DE750TN + HL47-50

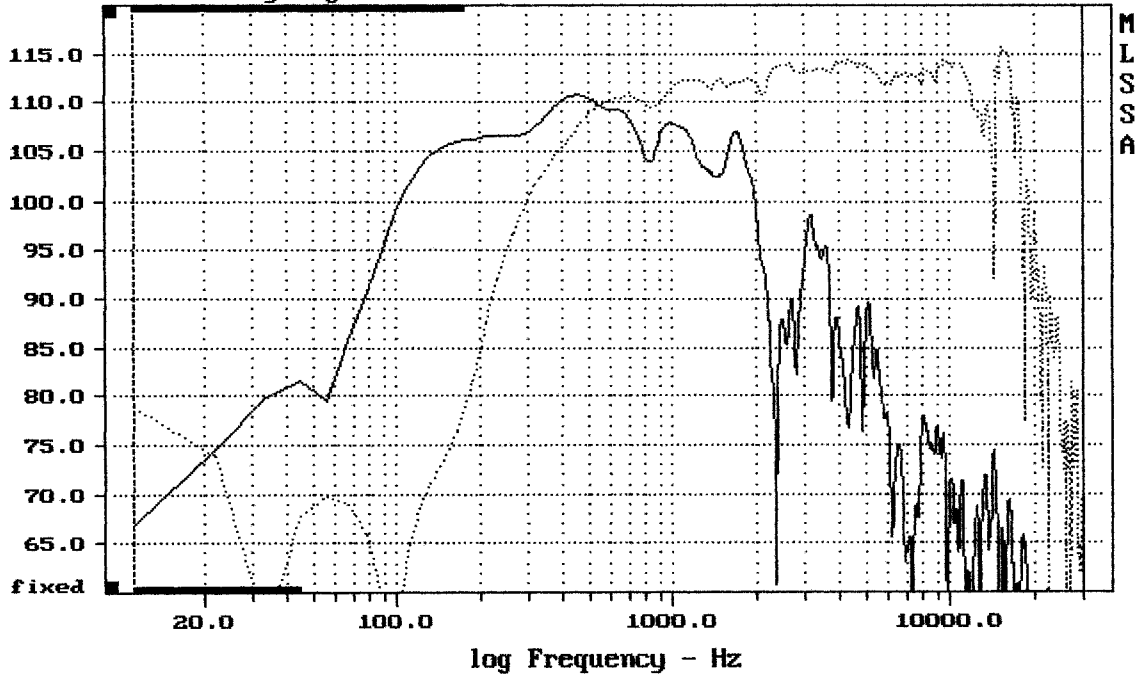
MLSSA: Frequency Domain



-64.67 dB, 1420 Hz (32), 4.290 msec (40)

DTTO

Sensitivity Magnitude - dB SPL/watt (4 ohms, @2.00 meters)

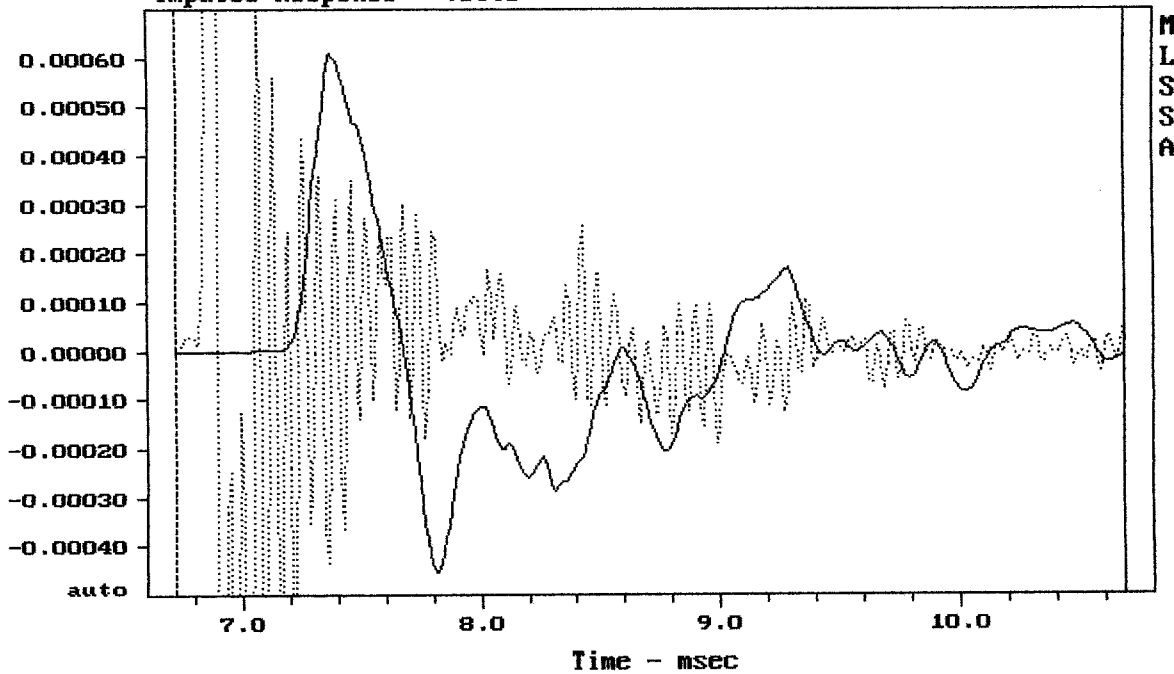


CURSOR: $dy = 12.2612$ $x = 30007.1014$ (2704)

2x12MH32 + HORN SELENIUM PAS3MA1

MLSSA: Frequency Domain

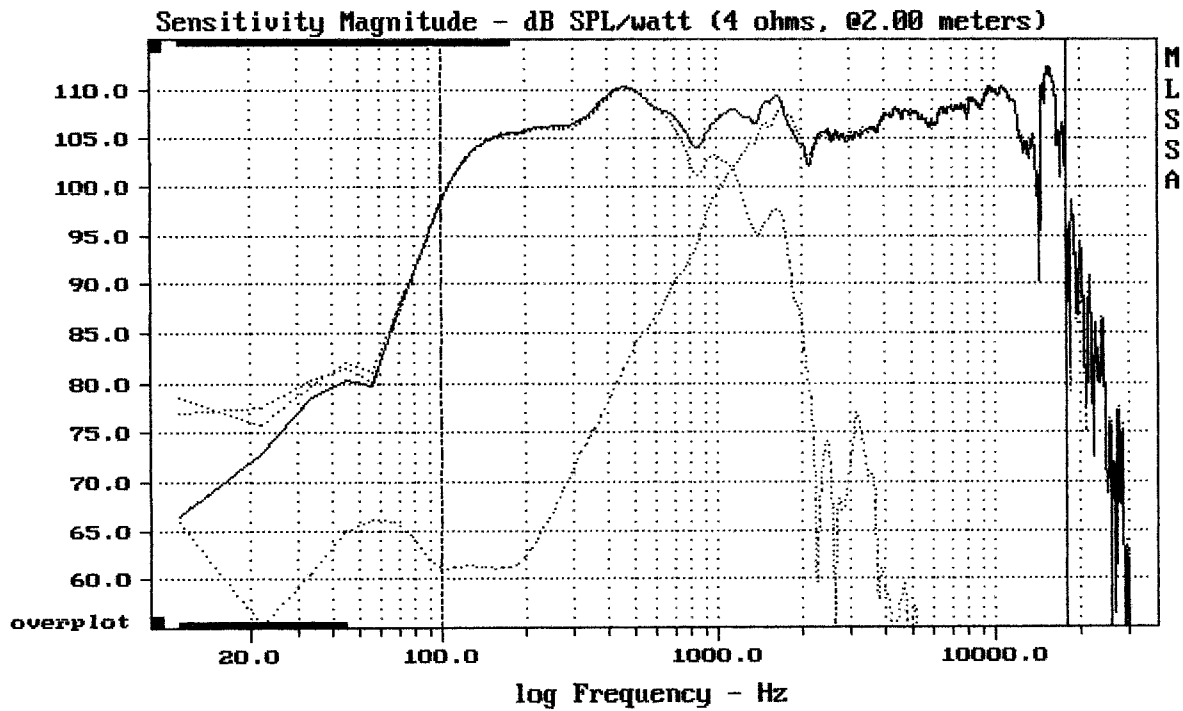
Impulse Response - volts



CURSOR: $y = -7.65714e-006$ $x = 10.6810$ (971)

2x12MH32 + HORN SELENIUM PAS3MA1

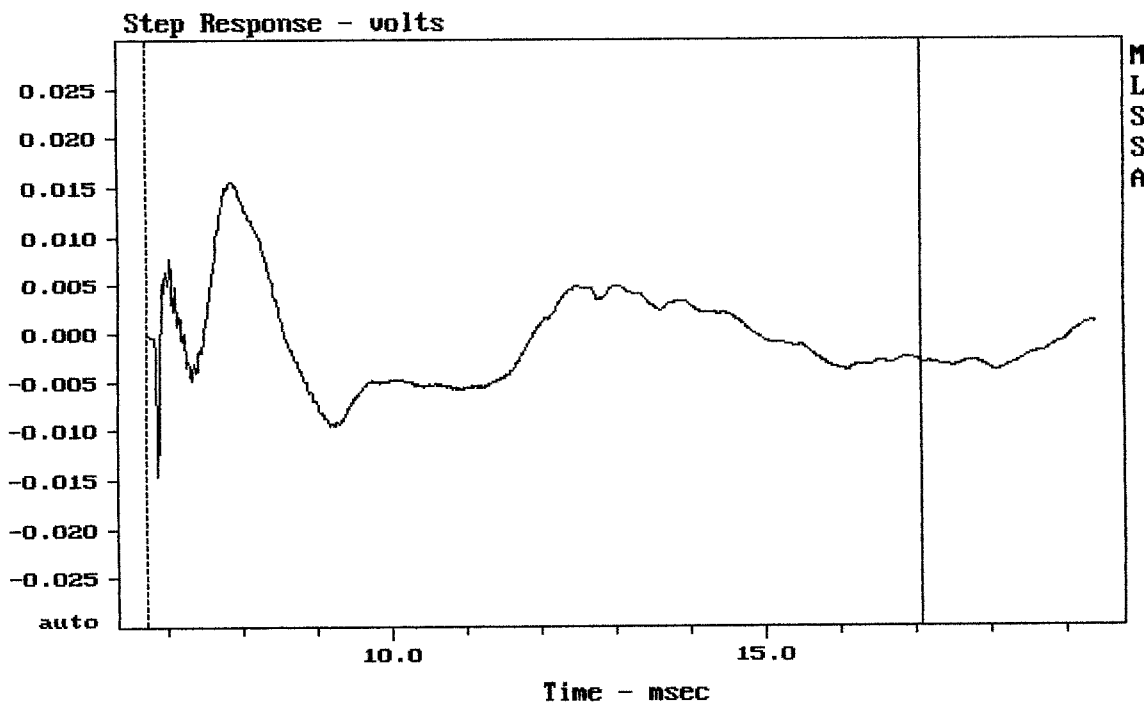
MLSSA: Time Domain



Level (100:18111 Hz) = 107.18 dB SPL/watt (4 ohms, @2.00 meters)

2x12MH32 + HORN SELENIUM PAS3MA1

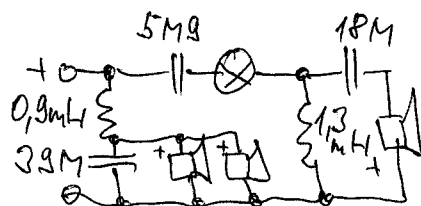
MLSSA: Frequency Domain



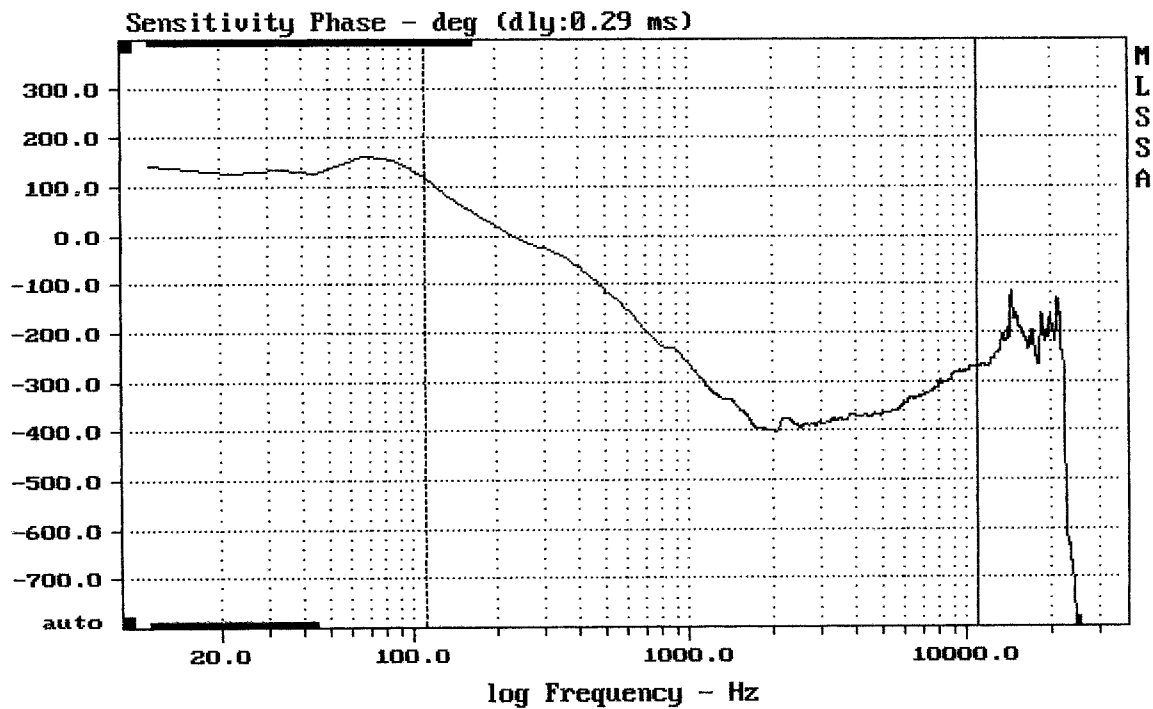
mean: -0.0004457, rms: 0.005244, std: 0.005225, max: 0.01562, min: -0.01457

2x12MH32 + HORN SELENIUM PAS3MA1

MLSSA: Time Domain



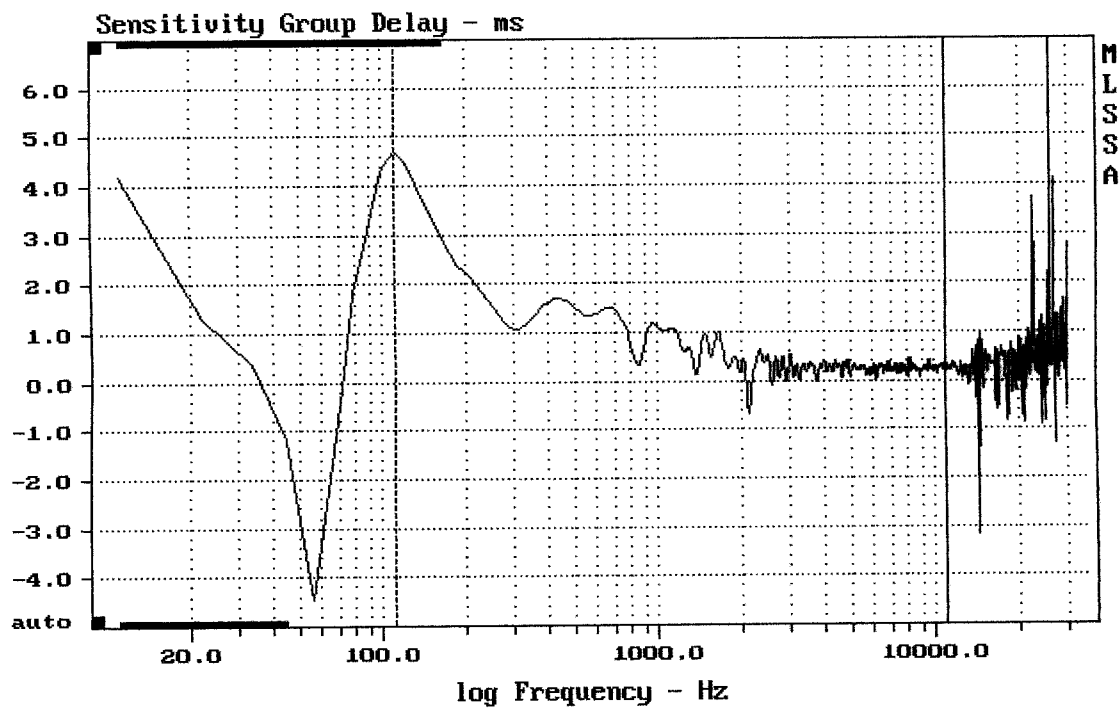
⊗ 24V/70W (1/2 44 ATA)



mean: -317.6, rms: 326.7, std: 76.67, max: 119, min: -401.6

2x12MH32 + HORN SELENIUM PAS3MA1

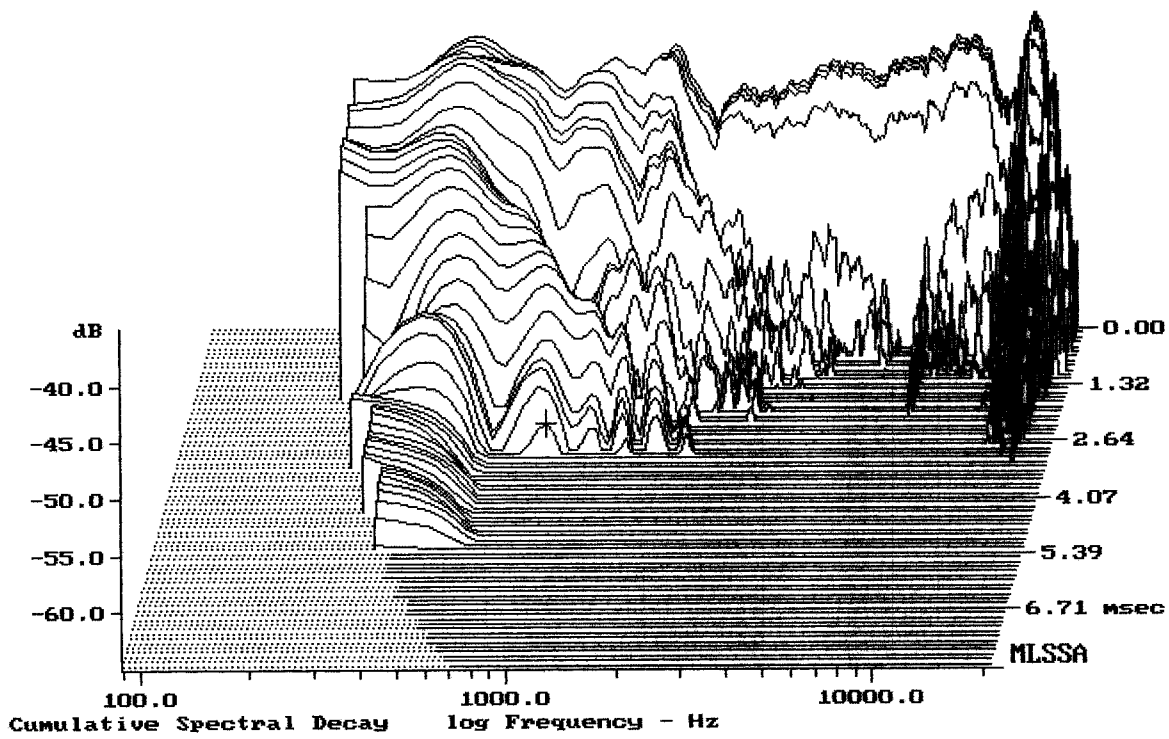
MLSSA: Frequency Domain



mean: 0.3875, rms: 0.591, std: 0.4462, max: 4.711, min: -0.6611

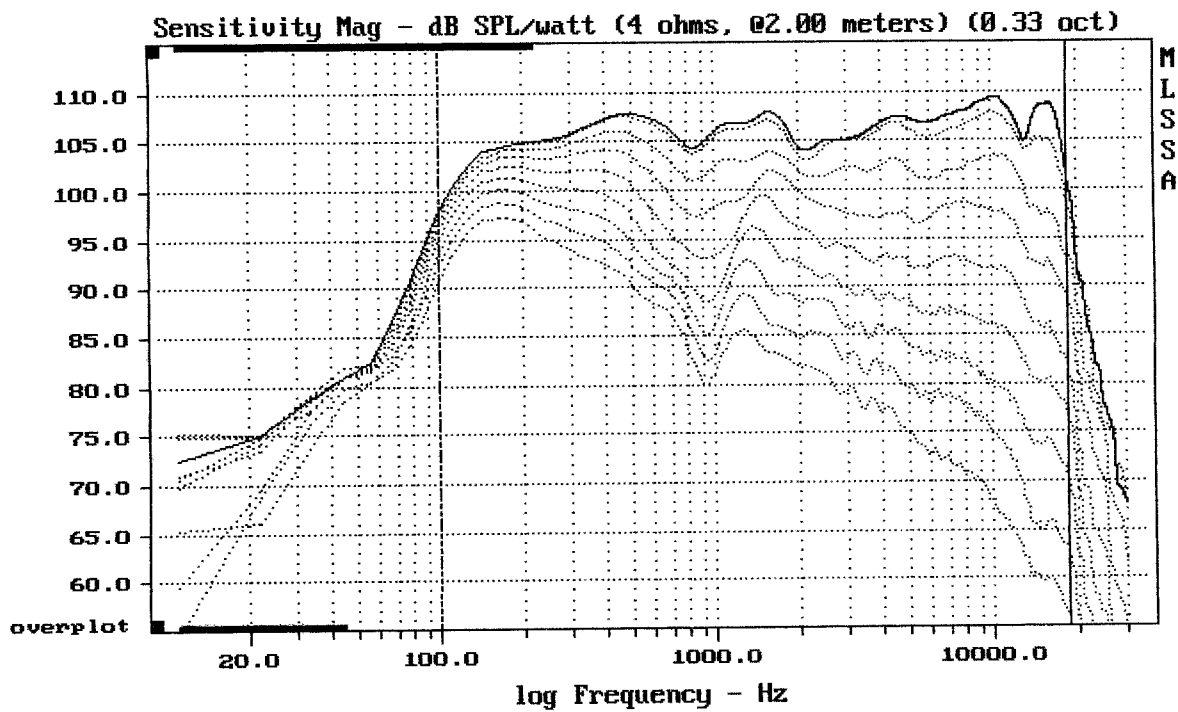
2x12MH32 + HORN SELENIUM PAS3MA1

MLSSA: Frequency Domain



-62.37 dB, 888 Hz (20), 2.970 msec (28)

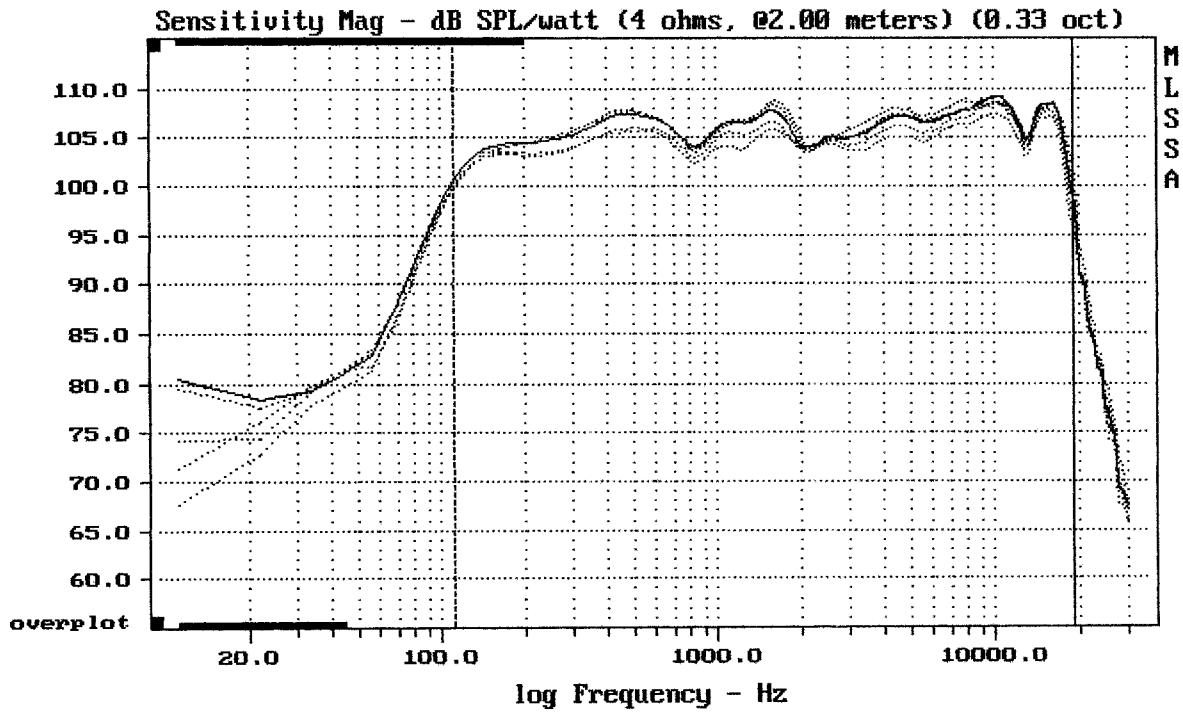
DTTO



Overlay Compare: dev= +31/-12, std= 9.5, avg= -38

2x12MH32 + HORN SELENIUM PAS3MA1

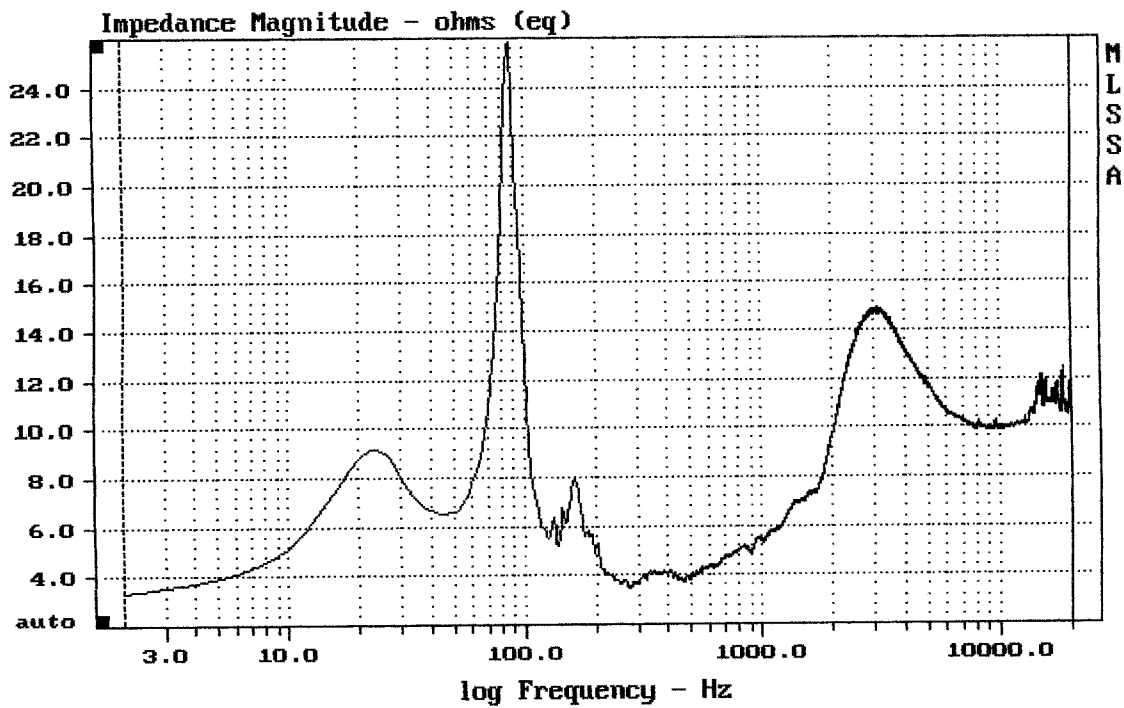
MLSSA: Frequency Domain



mean: 106.87, rms: 107.02, std: 1.49, max: 108.70, min: 99.55

2x12MH32 + HORN SELENIUM PAS3MA1

MLSSA: Frequency Domain



mean: 10.57, rms: 10.76, std: 1.996, max: 25.82, min: 3.335

2x12MH32 + HORN SELENIUM PAS3MA1

MLSSA: Frequency Domain