

Sestava: RCF MB15N351 8/ohm + B&C Speakers DE610 8/Ohm + ME90

Osazení:

- RCF MB15N351 8/ohm

<http://www.prodance.cz/mb15n351-8ohm.html>

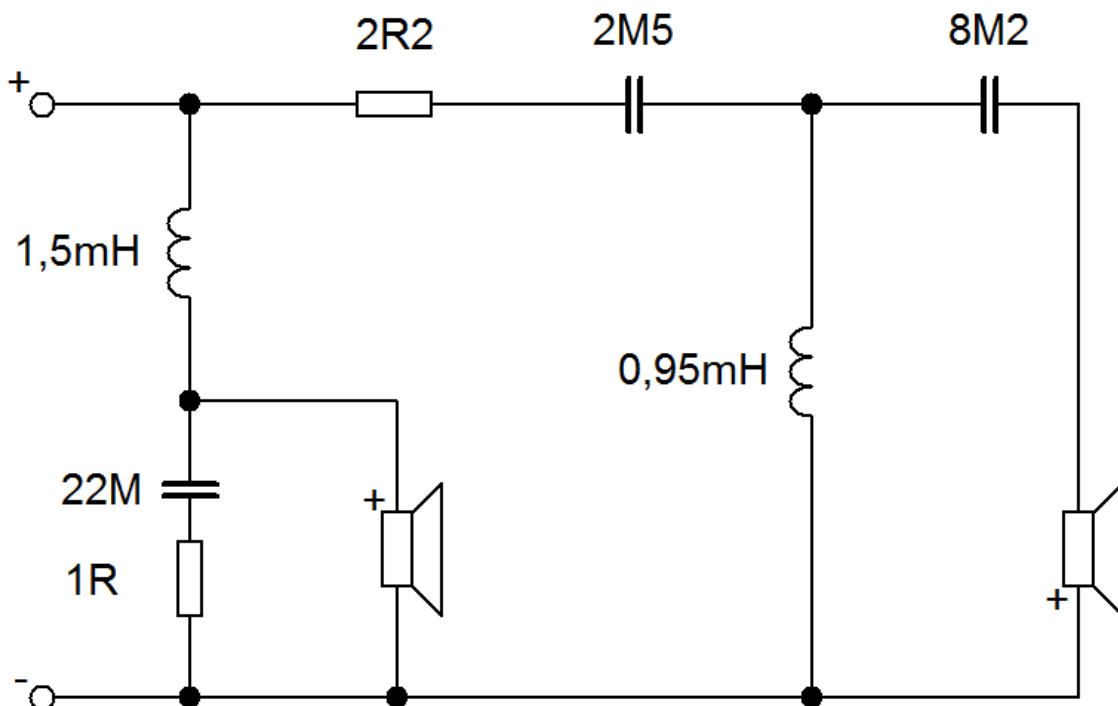
- B&C Speakers DE610 8/Ohm

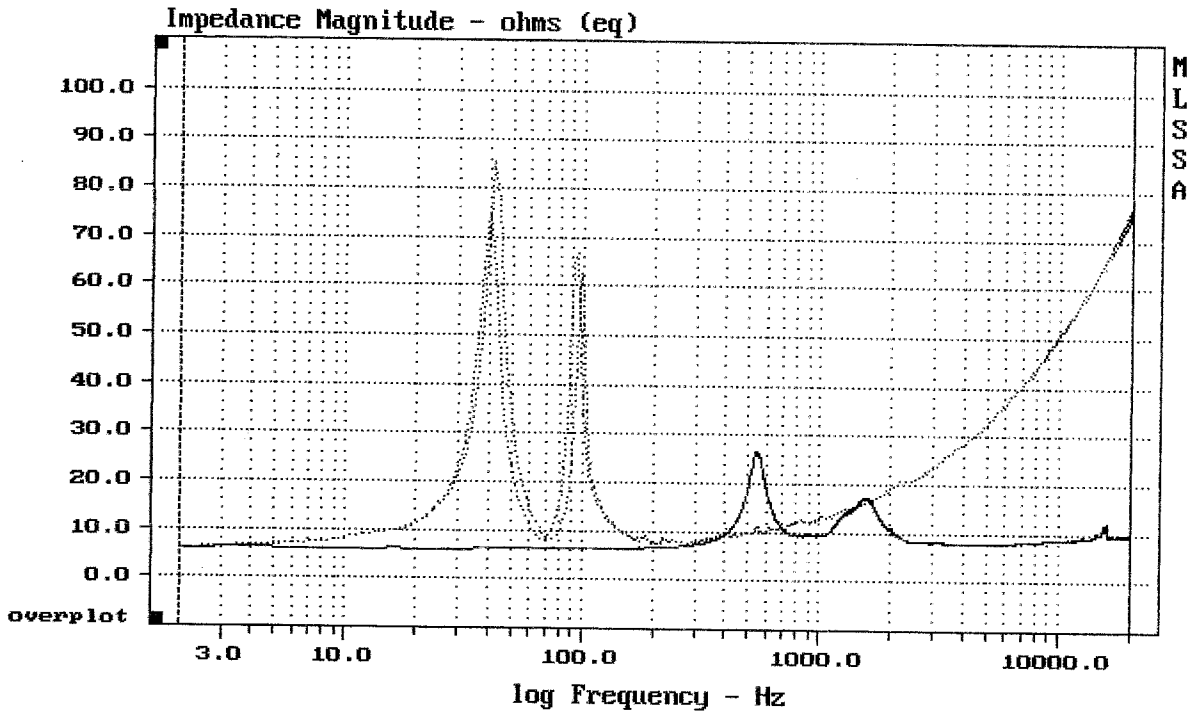
<http://www.prodance.cz/de610-8ohm.html>

- B&C Speakers ME90

<http://www.prodance.cz/me90.html>

Schéma výhybky:

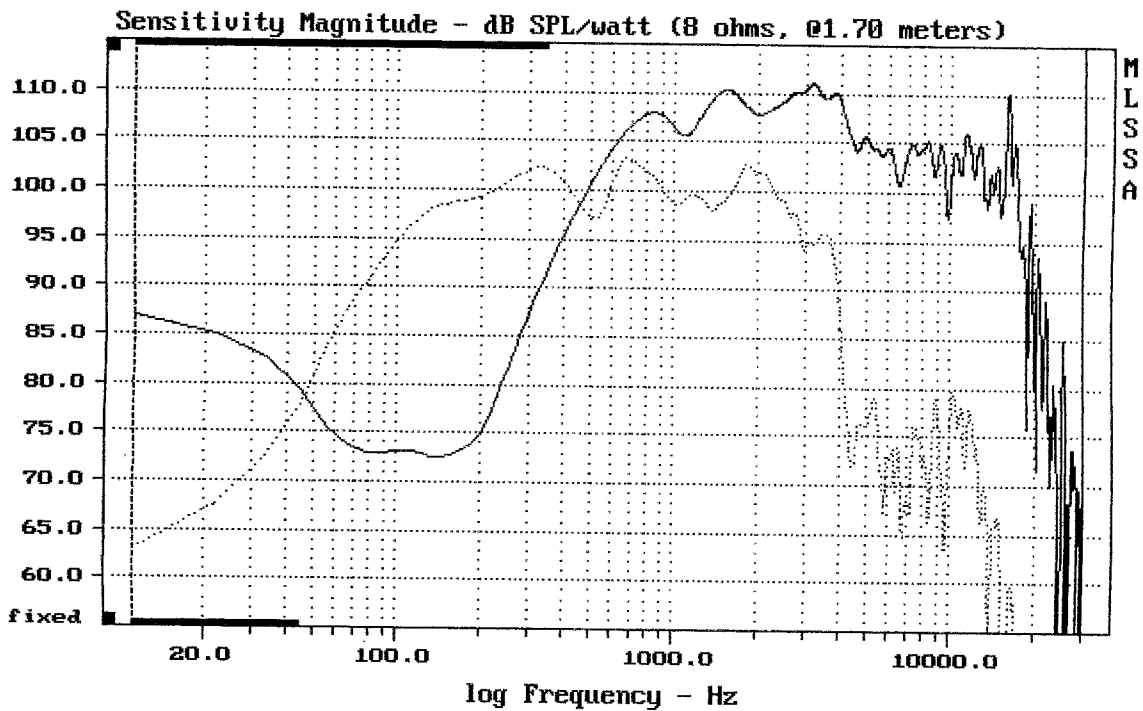




CURSOR: $y = 77.1077$ $x = 20001.5203$ (9995)

MB15N351 + DE610 + ME90

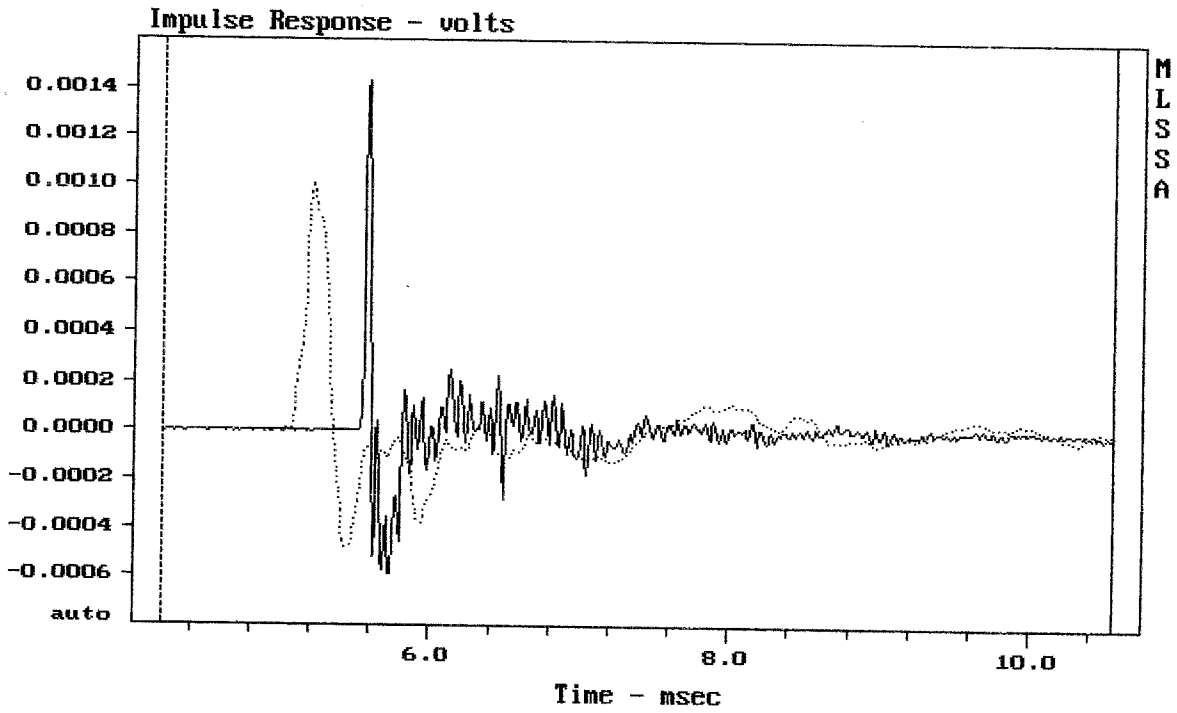
MLSSA: Frequency Domain



CURSOR: $dy = -32.7676$ $x = 30007.1014$ (2704)

MB15N351 + DE610 + ME90

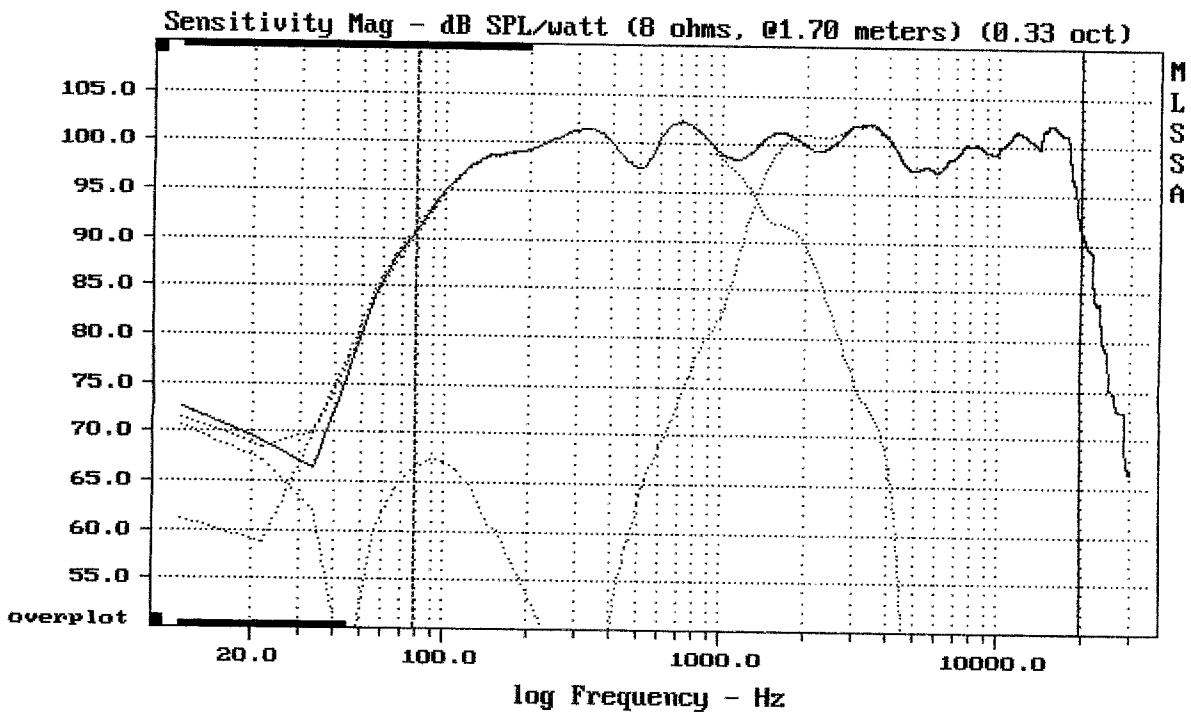
MLSSA: Frequency Domain



CURSOR: $dy = 2.00674e-005$ $x = 10.5490$ (959)

MB15N351 + DE610 + ME90

MLSSA: Time Domain

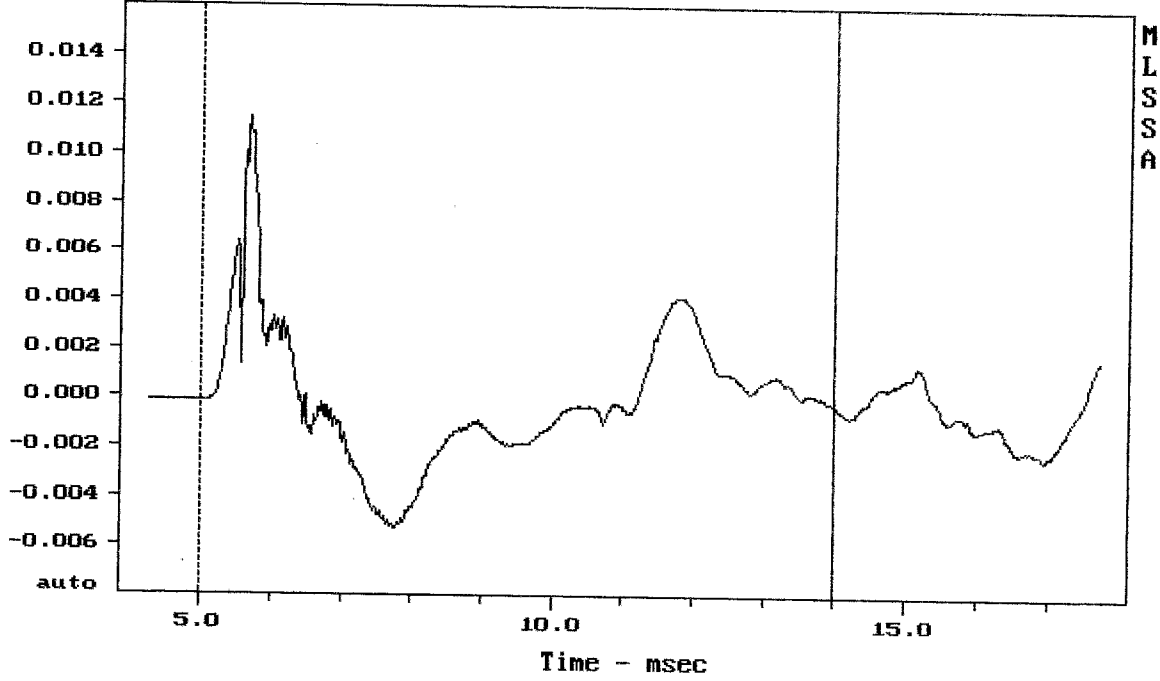


Level (78:19909 Hz) = 99.82 dB SPL/watt (8 ohms, @1.70 meters) (0.33 oct)

MB15N351 + DE610 + ME90

MLSSA: Frequency Domain

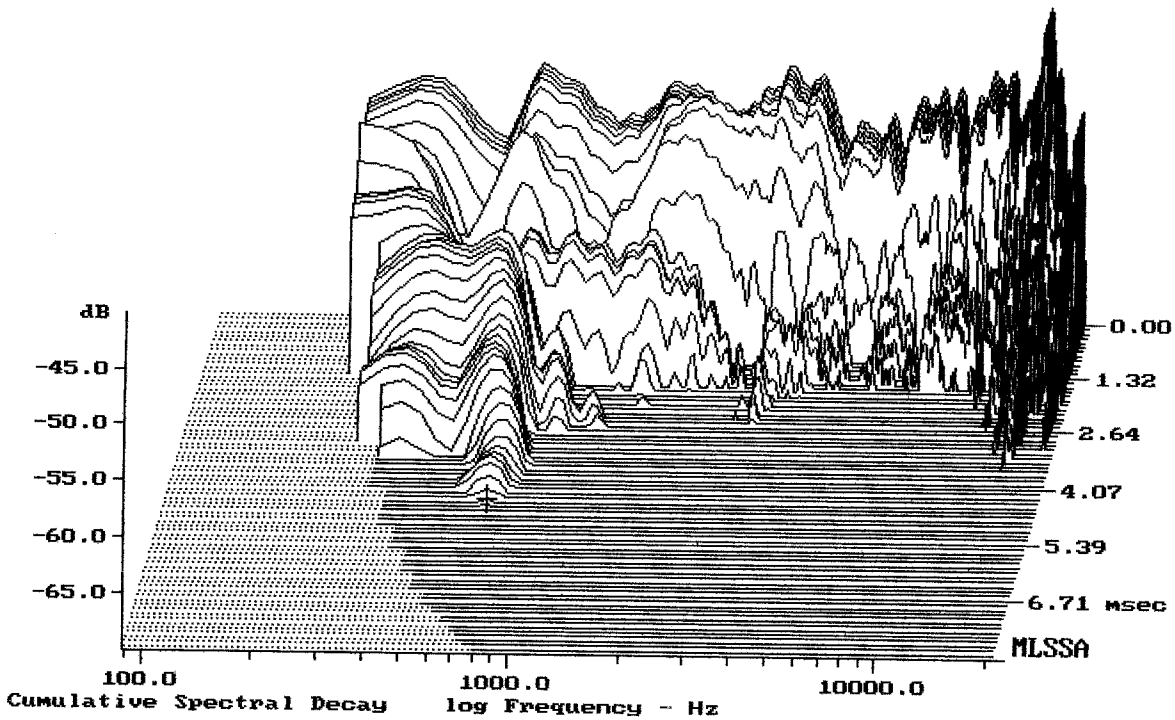
Step Response - volts



mean: $-2.879e-005$, rms: 0.002724, std: 0.002724, max: 0.01146, min: -0.005303

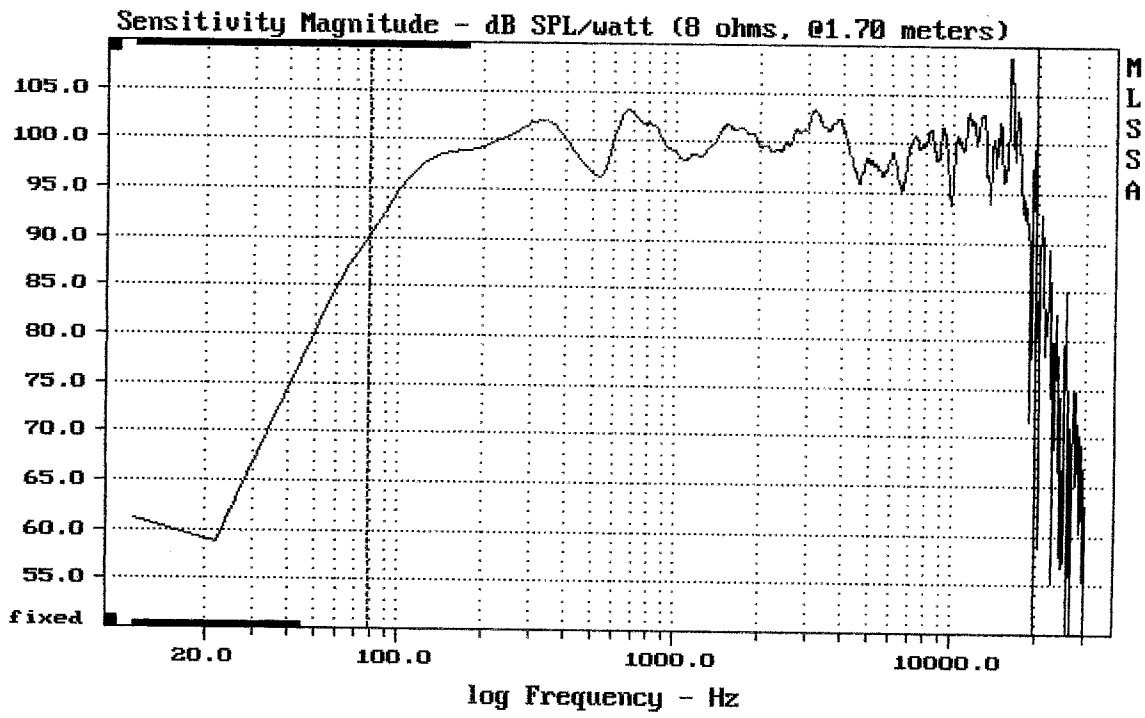
MB15N351 + DE610 + ME90

MLSSA: Time Domain



-69.81 dB, 666 Hz (15), 4.510 msec (42)

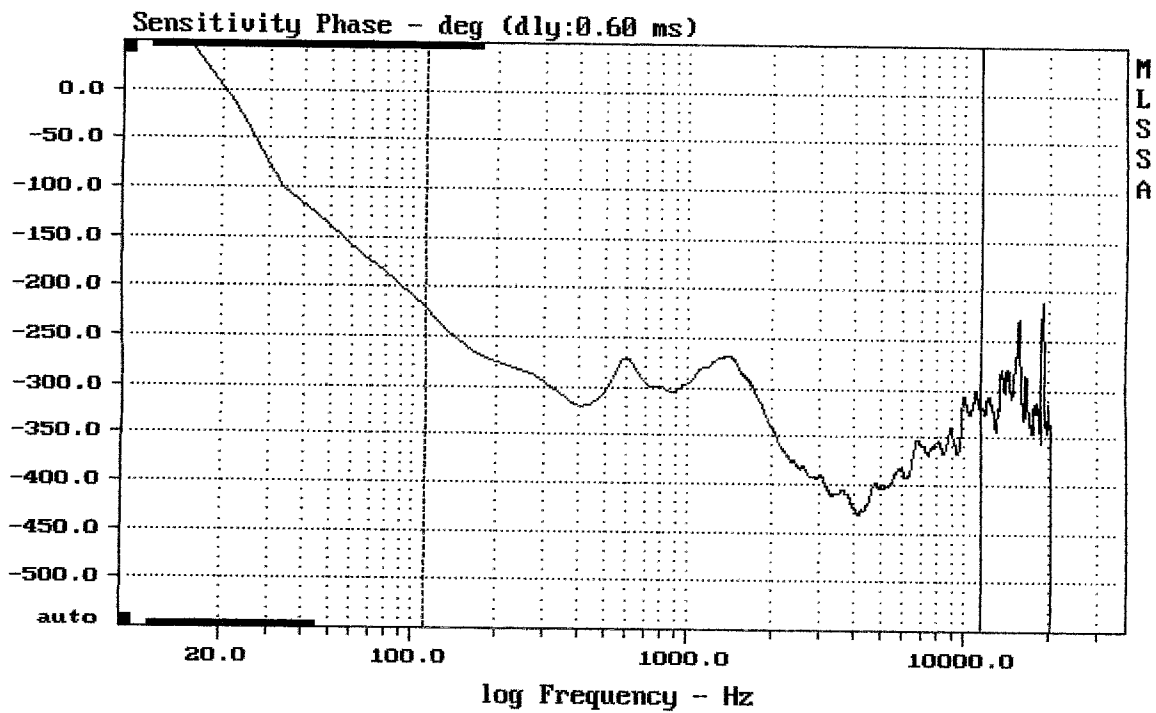
DTTO



mean: 99.66, rms: 100.27, std: 2.85, max: 100.85, min: 71.61

MB15N351 + DE610 + ME90

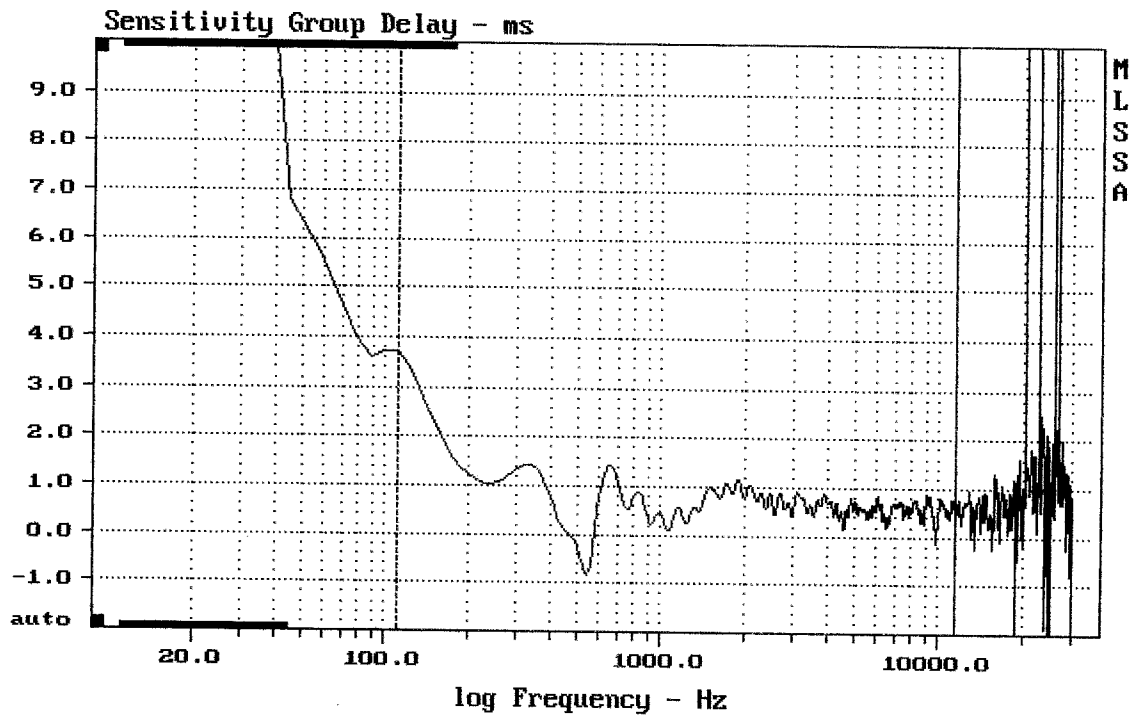
MLSSA: Frequency Domain



mean: -356.2, rms: 358.8, std: 42.81, max: -221.5, min: -430.3

MB15N351 + DE610 + ME90

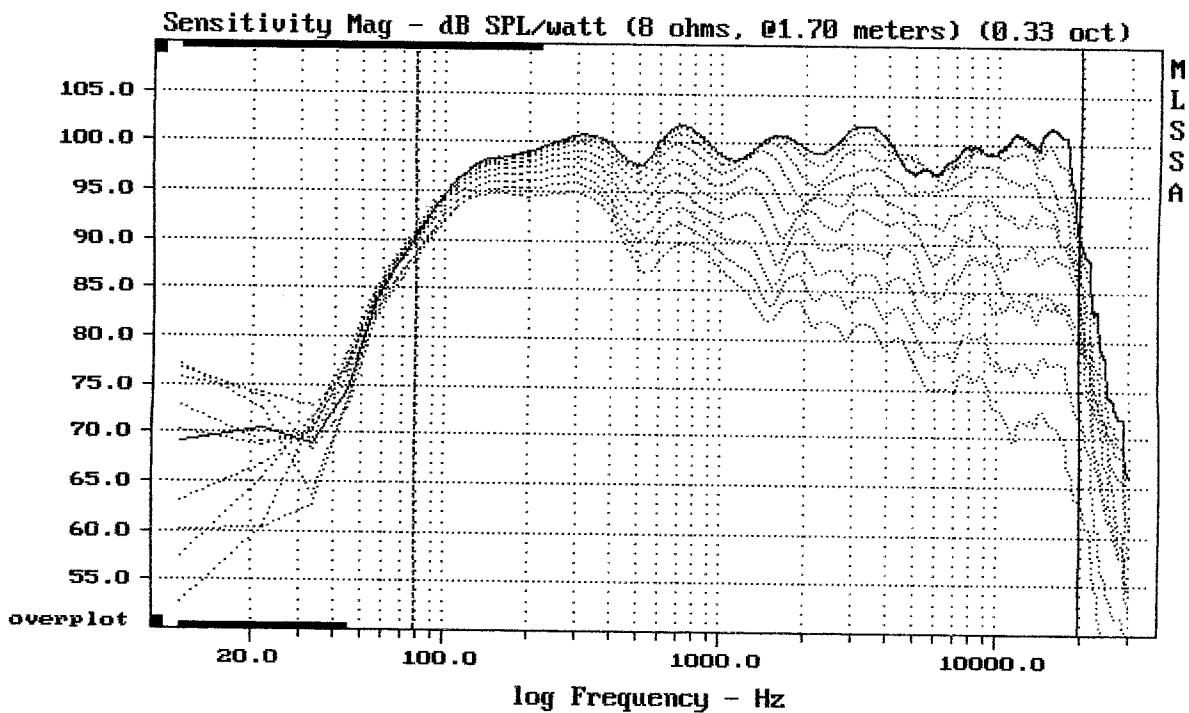
MLSSA: Frequency Domain



mean: 0.6228, rms: 0.6909, std: 0.299, max: 3.728, min: -0.8127

MB15N351 + DE610 + ME90

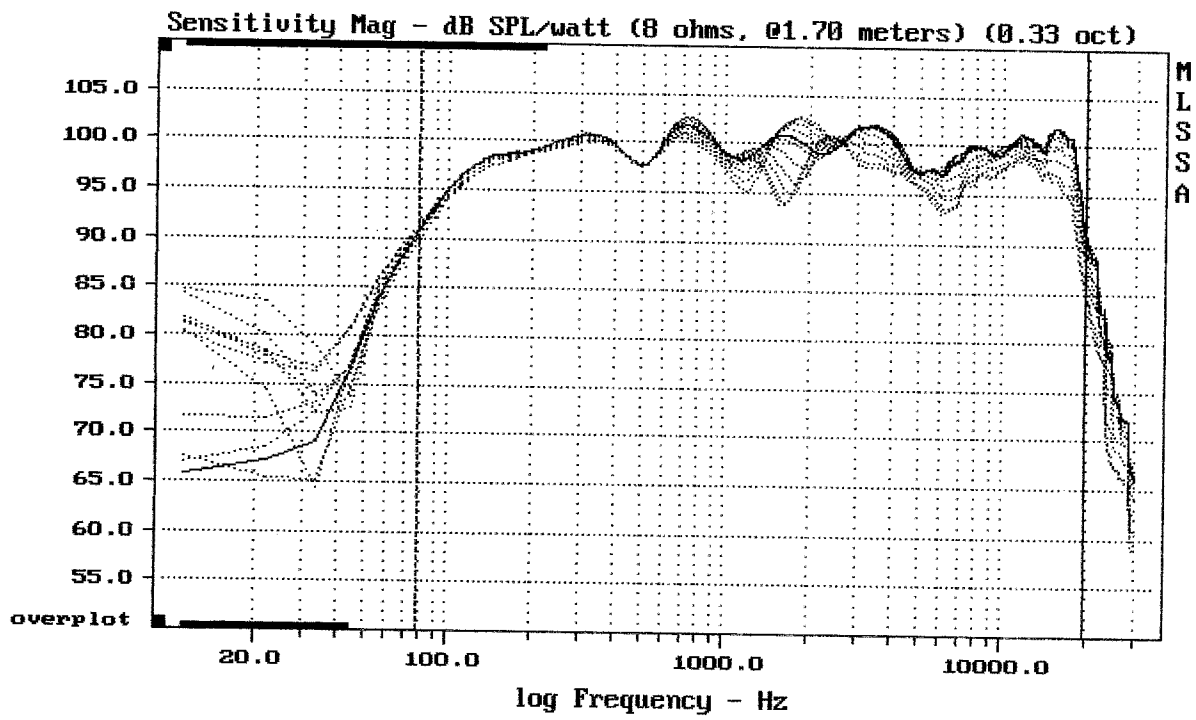
MLSSA: Frequency Domain



Overlay Compare: dev= +23/-8.3, std= 5.9, avg= -25

MB15N351 + DE610 + ME90

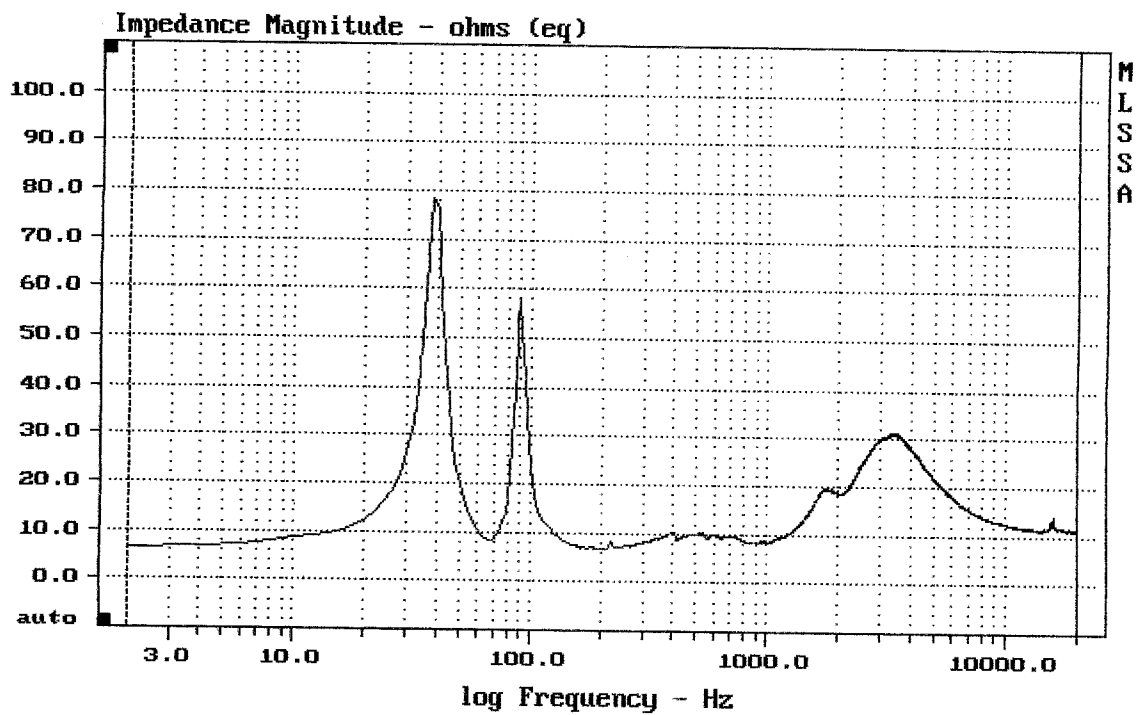
MLSSA: Frequency Domain



CURSOR: y = 84.8228 x = 19908.5576 (1794)

MB15N351 + DE610 + ME90

MLSSA: Frequency Domain



mean: 14.95, rms: 16.04, std: 5.815, max: 78.56, min: 6.415

MB15N351 + DE610 + ME90

MLSSA: Frequency Domain