

MLSSA SPO 4.0D #960903-3057-3075 -- QC Limits
 Measured Data

Line	Parameter	Value	Units
1	RMSE-free	0.90	Ohms
2	Fs	54.44	Hz
3	Re	5.64	Ohms[dc]
4	Res	56.87	Ohms
5	Qms	2.85	
6	Qes	0.28	
7	Qts	0.26	
8	L1	0.84	mH
9	L2	1.53	mH
10	R2	3.41	Ohms
11	RMSE-load	0.74	Ohms
12	Vas(Sd)	99.41	liters
13	Mms	34.04	grams
14	Cms	251	$\mu\text{M}/\text{Newton}$
15	B1	15.25	Tesla-M
16	SPLref(Sd)	99.4	dB[Re]
17	Rub-index	0.05	

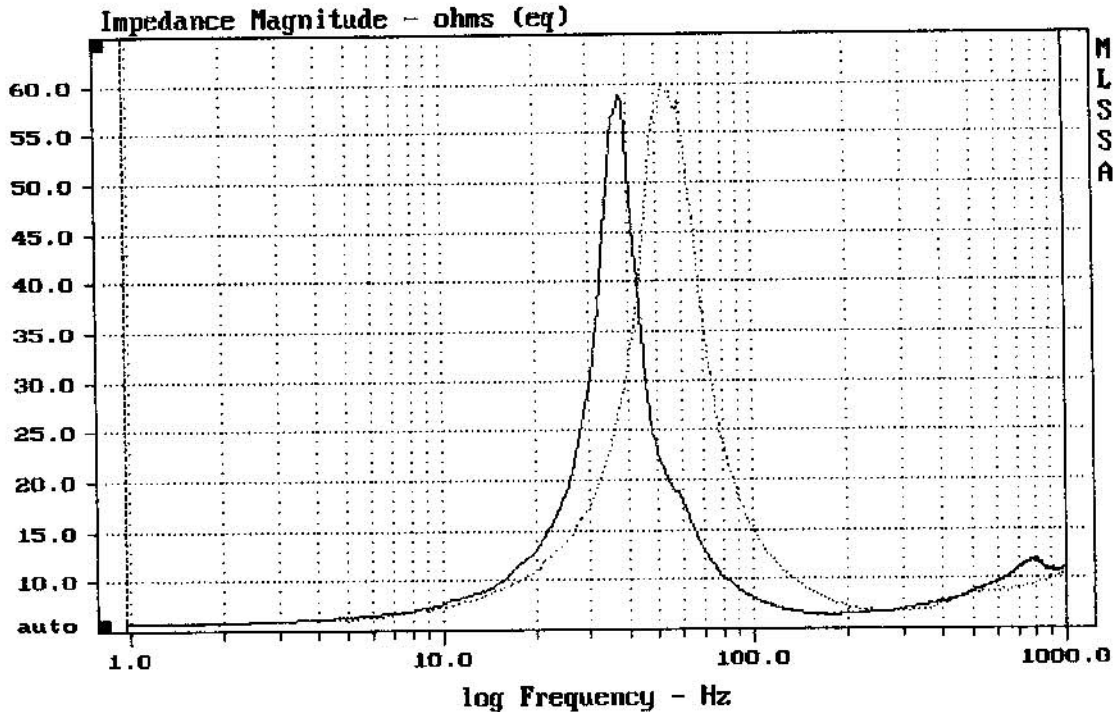
Method: Mass-loaded (40.00 grams)
 DCR mode: Measure (-0.09 ohms)

Area (Sd): 530.93 sq cm
 QC file: CLOSED

Analysis successful. Shift in Fs = -31.0% (-20% to -50% is recommended).

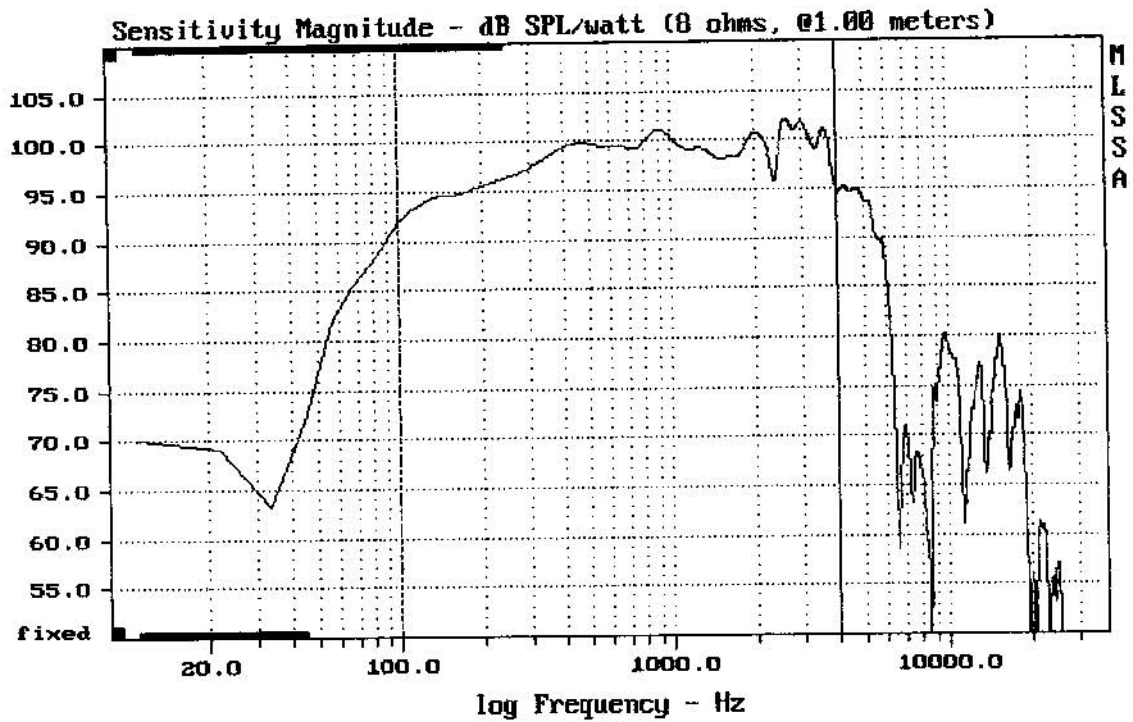
12HPL76

MLSSA: Parameters



CURSOR: dy = -0.435835 x = 1000.9766 (1025)

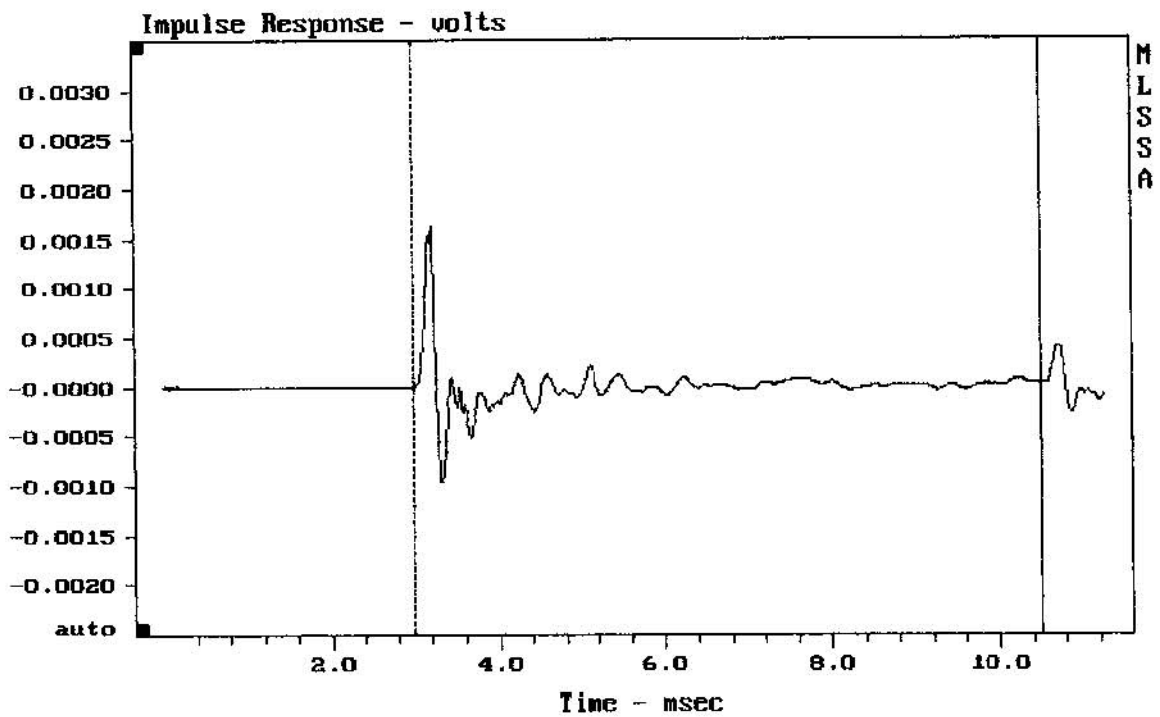
MLSSA: Frequency Domain



Level (100:1006 Hz) = 98.65 dB SPL/watt (8 ohms, @1.00 meters)

12HPL76

MLSSA: Frequency Domain



CURSOR: y = 3.12949e-005 x = 10.4940 (954)

12HPL76