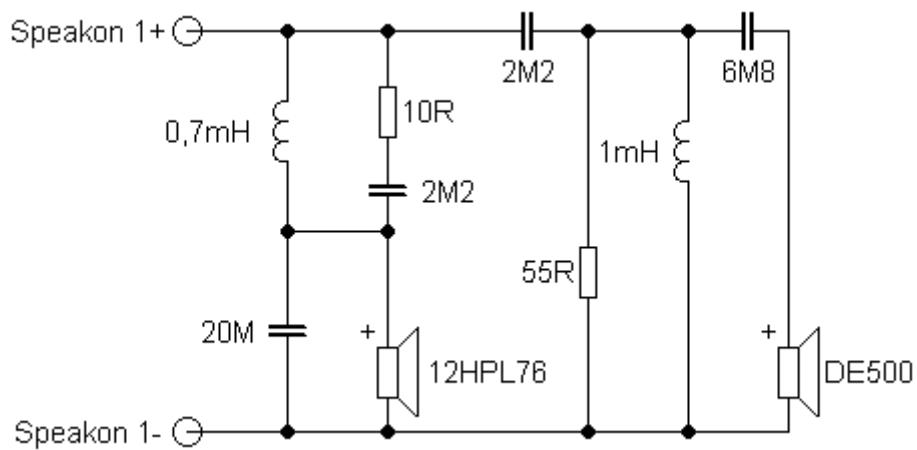


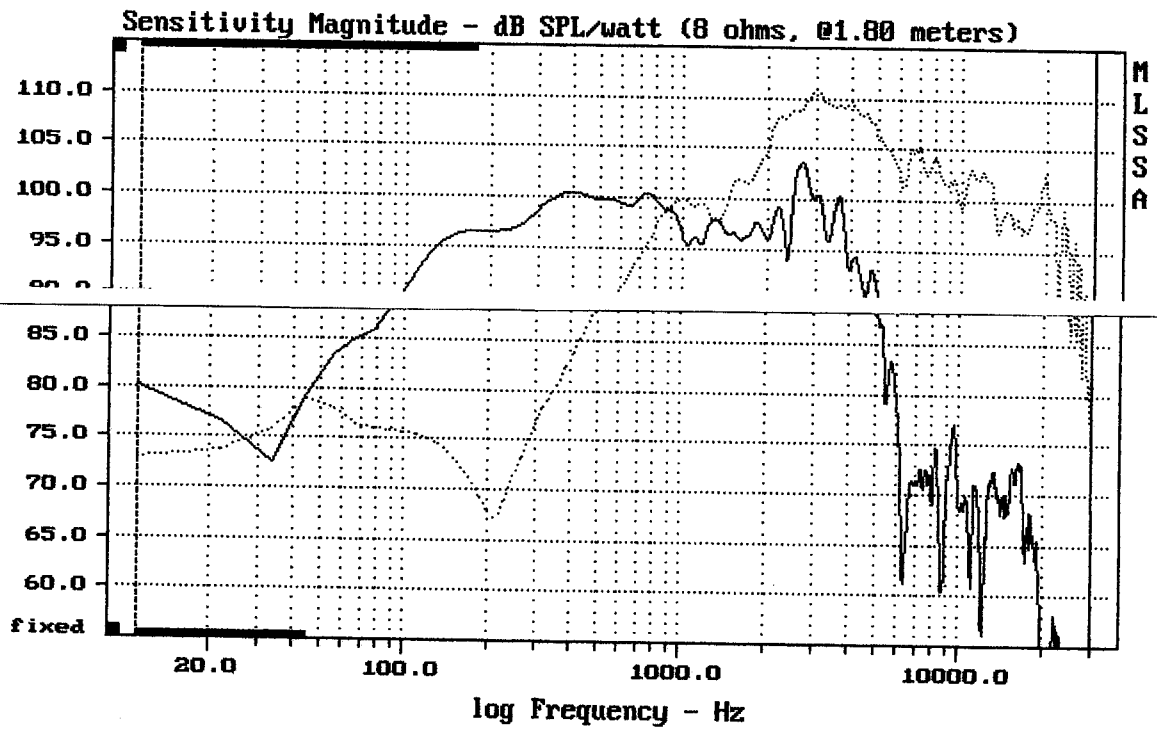
Sestava B&C Speakers 12HPL76 + DE500 + Megaton A9090

Osazení:

- B&C Speakers 12HPL76 8/Ohm
<http://eshop.prodance.cz/DetailPage.asp?DPG=82710>
- B&C Speakers DE500 8/Ohm
<http://eshop.prodance.cz/DetailPage.asp?DPG=82312>
- Megaton A9090
<http://eshop.prodance.cz/DetailPage.asp?DPG=83920>

Schéma výhybky:

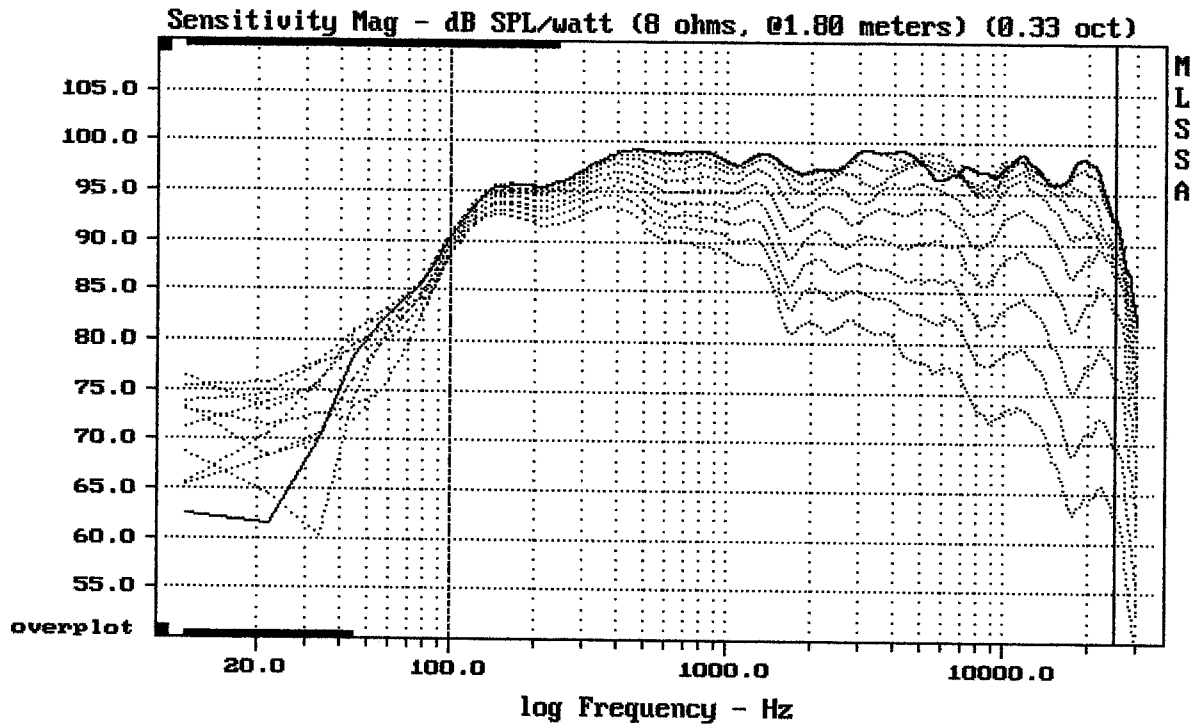




CURSOR: dy = 46.6561 x = 30007.1014 (2704)

12HPL76 + DE500 + A9090

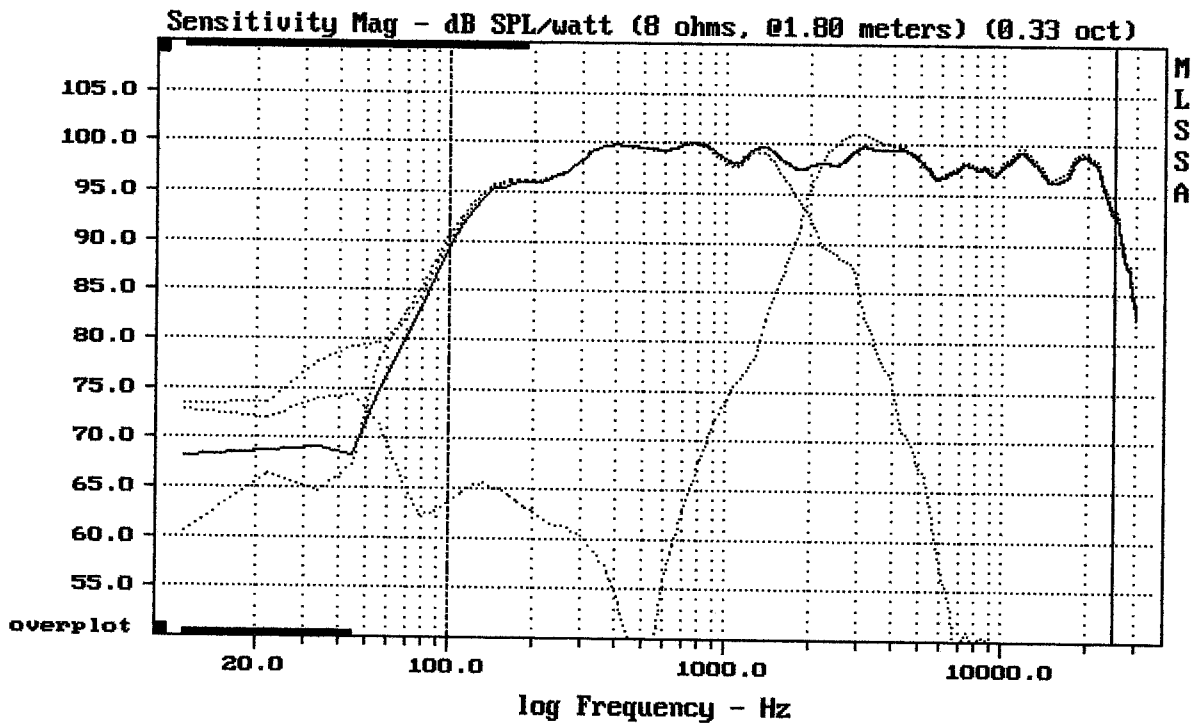
MLSSA: Frequency Domain



Overlay Compare: dev= +24/-9.7, std= 6.9, avg= -25

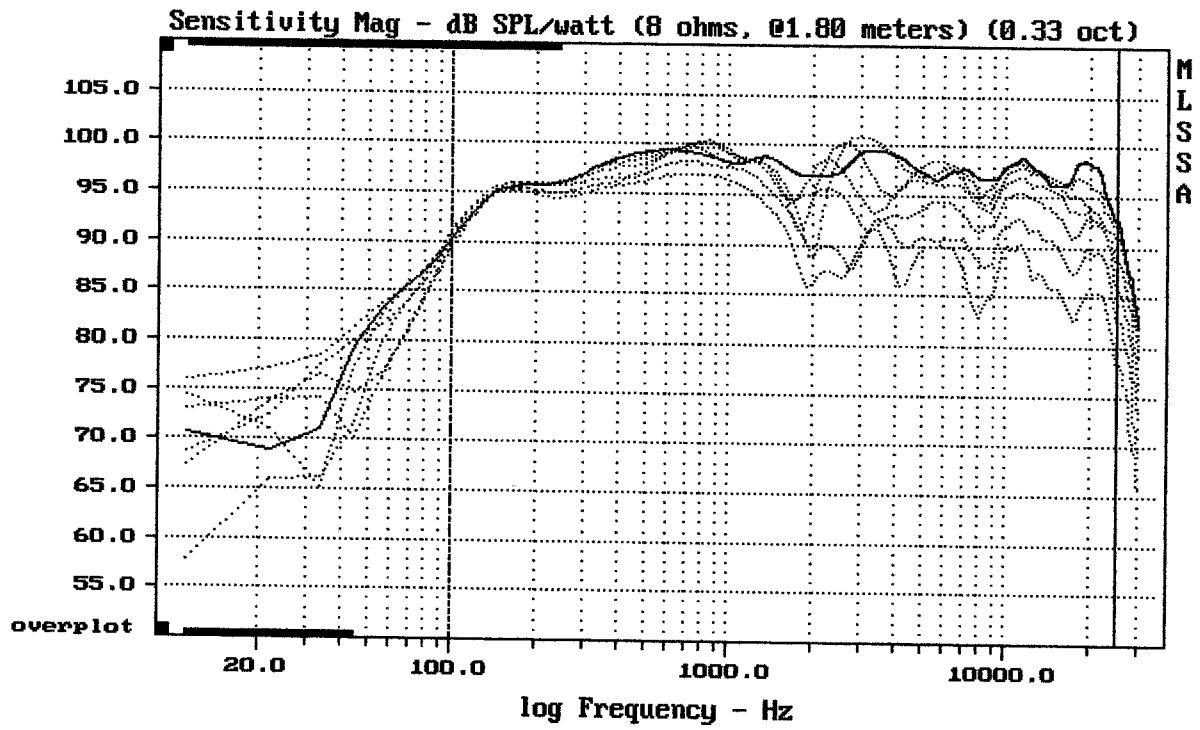
12HPL76 + DE500 + A9090

MLSSA: Frequency Domain



Level (100:25002 Hz) = 98.17 dB SPL/watt (8 ohms, @1.80 meters) (0.33 oct)

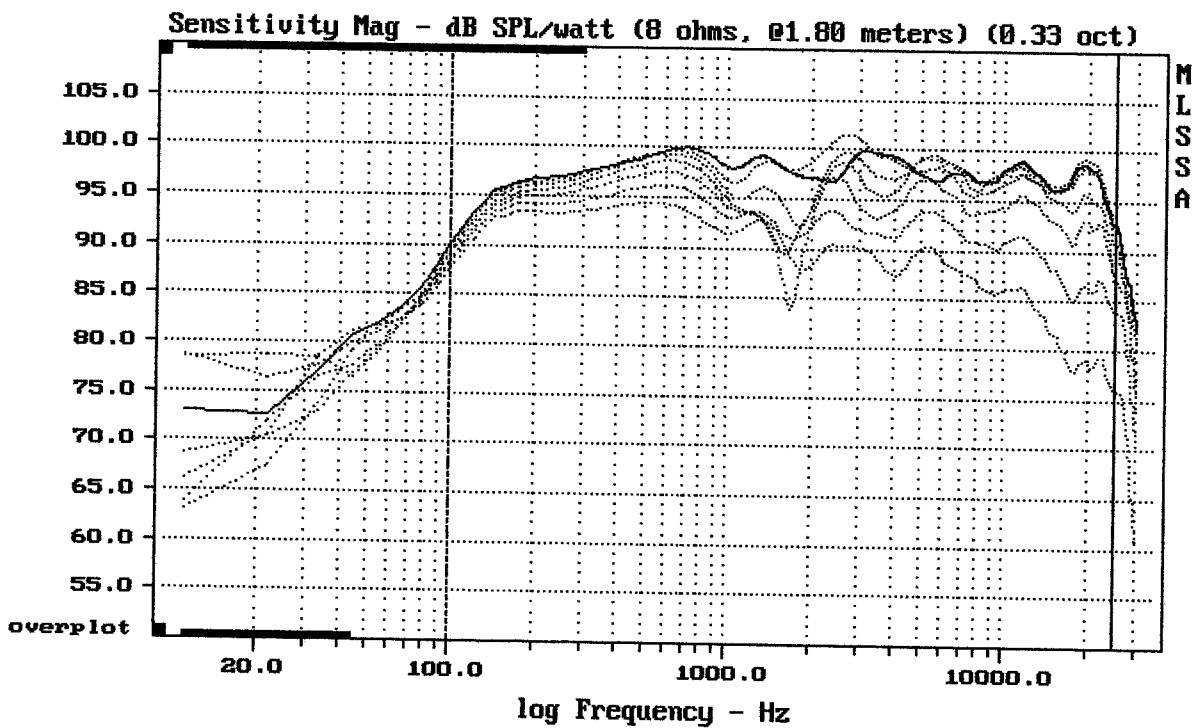
12HPL76 + DE500 + A9090



Overlay Compare: dev= +11/-4.5, std= 2.8, avg= -10

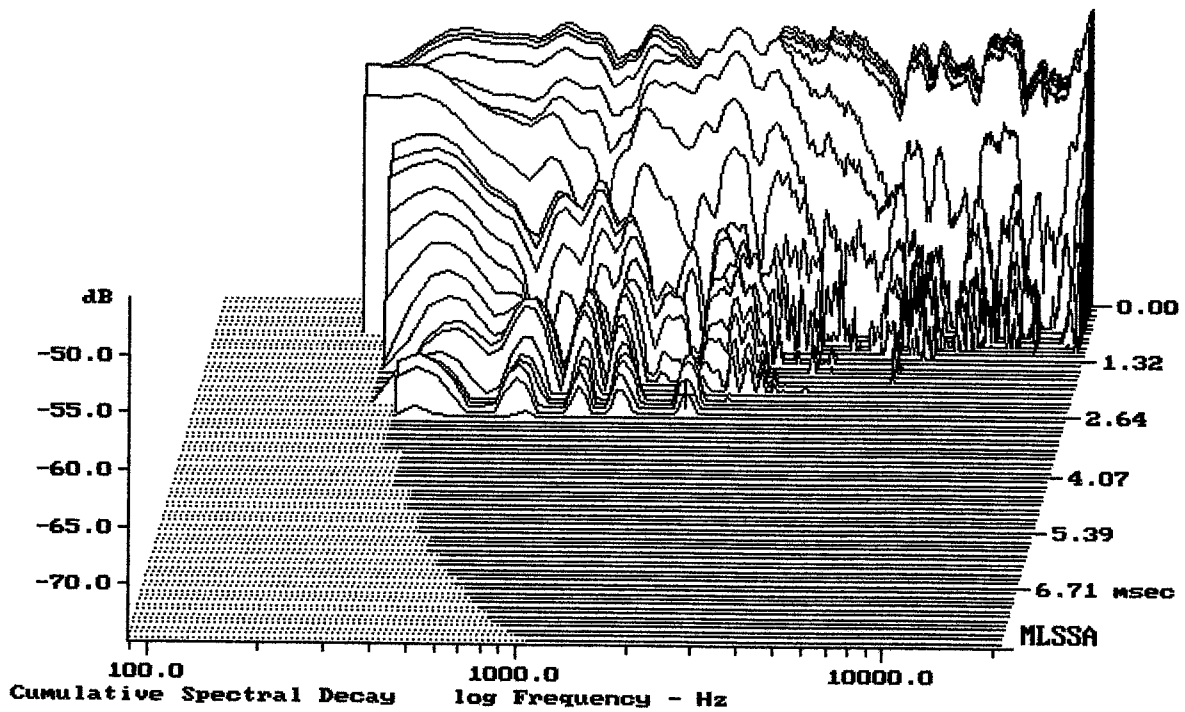
12HPL76 + DE500 + A9090

MLSSA: Frequency Domain



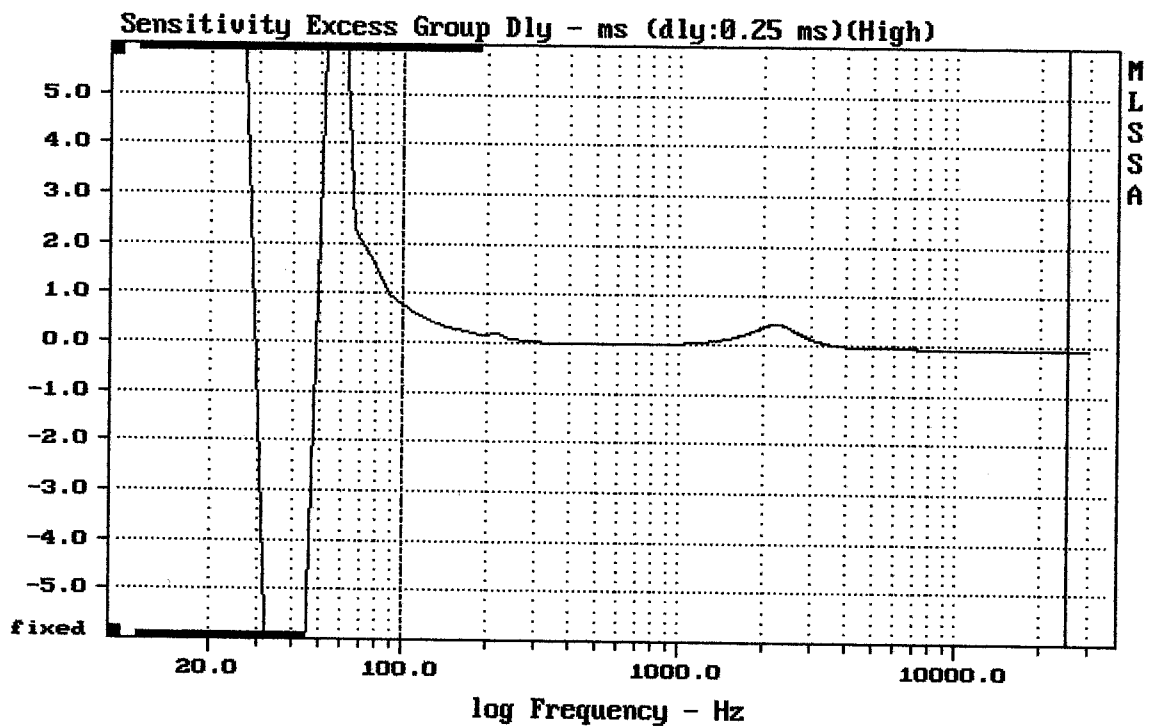
Overlay Compare: dev= +11/-6.8, std= 4.4, avg= -13

12HPL76 + DE500 + A9090

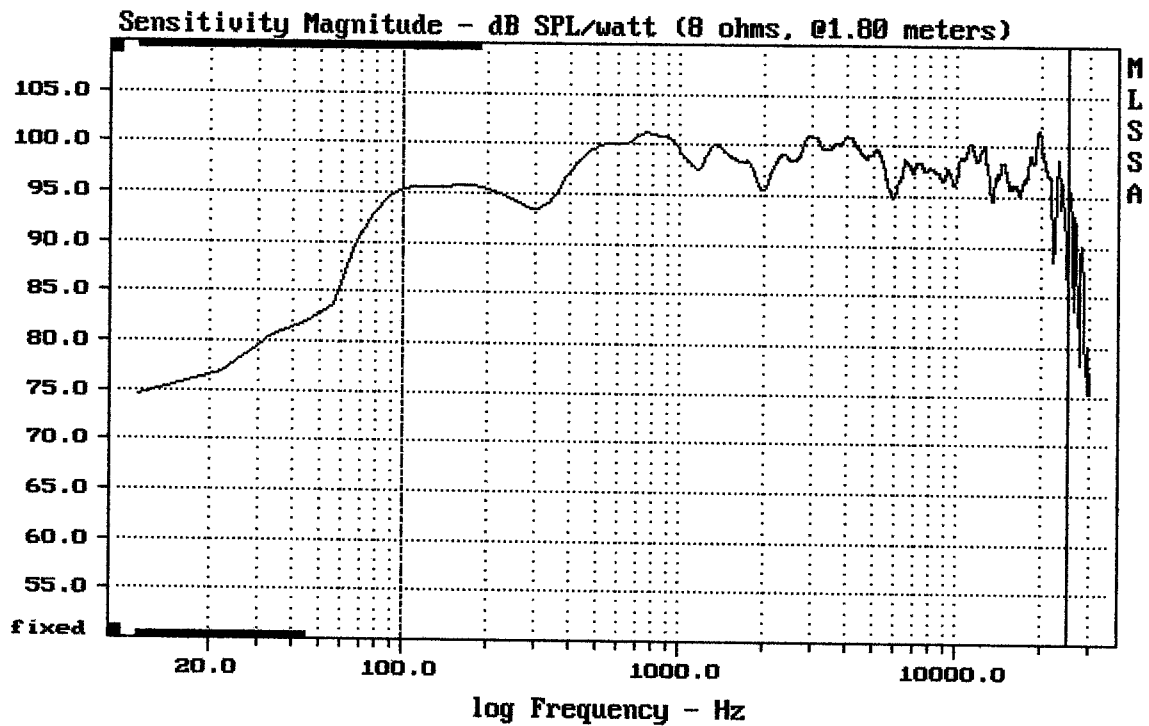


-73.33 dB, 1909 Hz (43), 2.640 msec (25)

DTT0



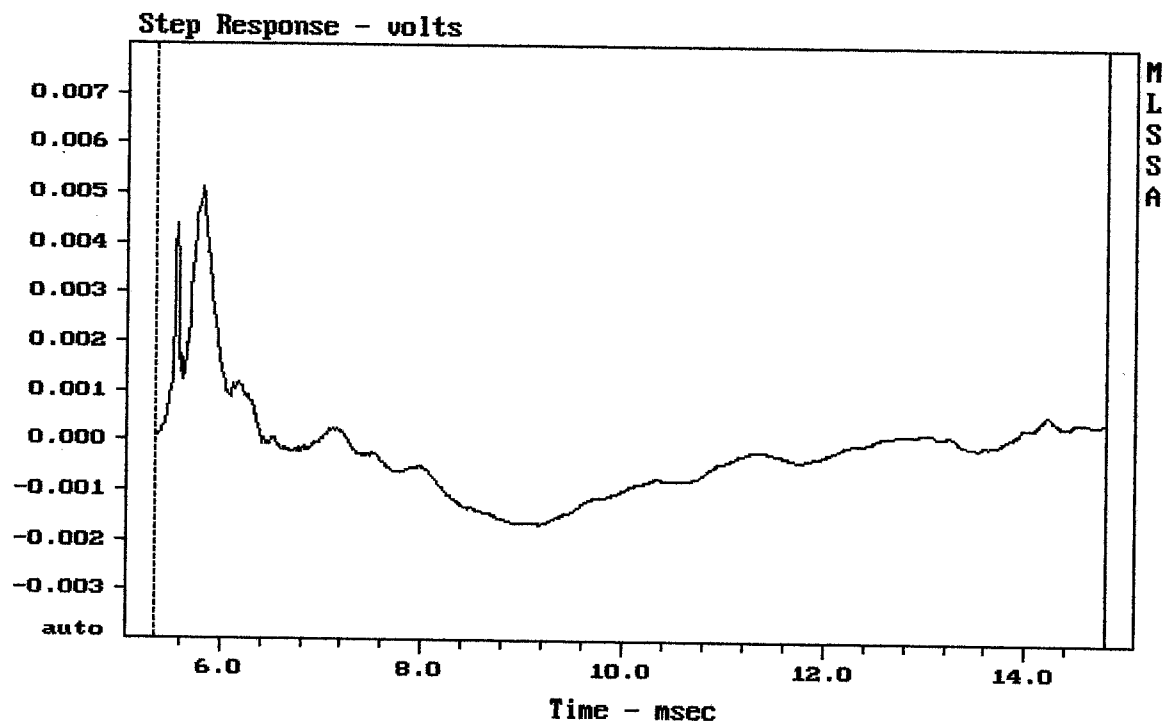
CURSOR: y = -0.066749 x = 25002.2187 (2253)



Level (100:25002 Hz) = 98.21 dB SPL/watt (8 ohms, @1.80 meters)

12HPL76 + DE500 + A9090

MLSSA: Frequency Domain



CURSOR: y = 0.000423948 x = 14.7950 (1345)

12HPL76 + DE500 + A9090

... pódiový monitor