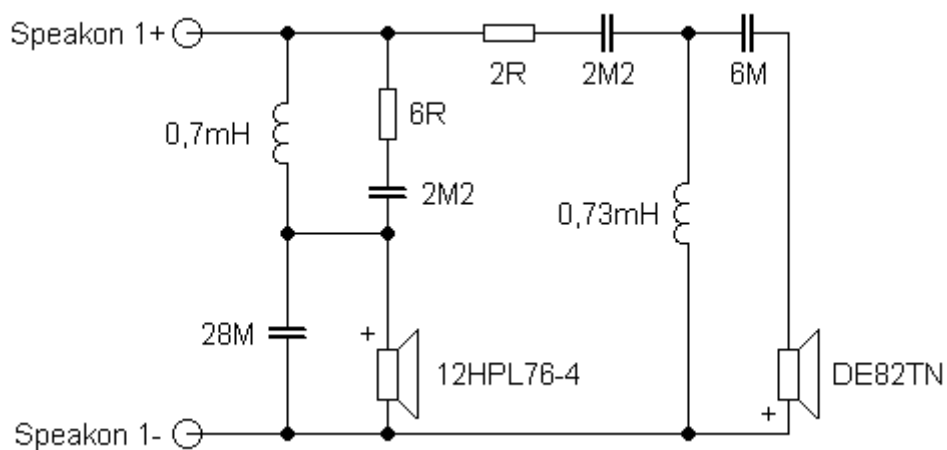


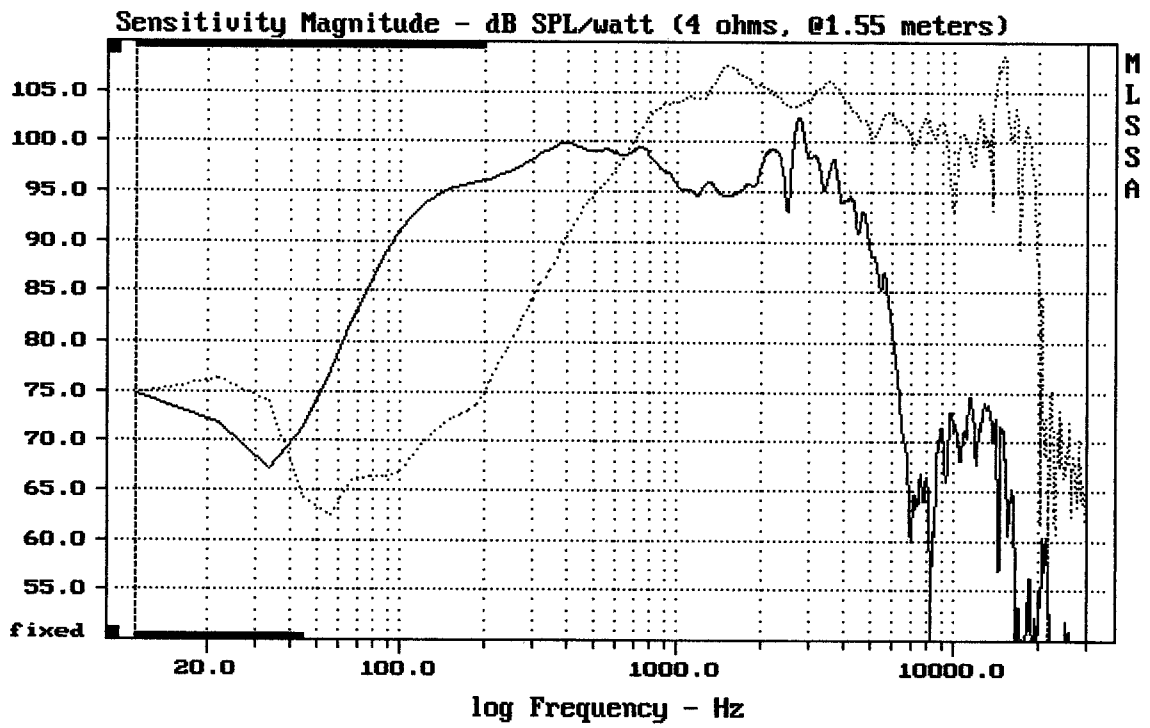
## Sestava B&C Speakers 12HPL76-4 + DE82TN + DAS Audio BP91

### Osazení:

- B&C Speakers 12HPL76-4 4/Ohm  
<http://eshop.prodance.cz/DetailPage.asp?DPG=82709>
- B&C Speakers DE82TN 8/Ohm  
<http://eshop.prodance.cz/DetailPage.asp?DPG=92772>
- DAS Audio BP91  
<http://eshop.prodance.cz/DetailPage.asp?DPG=84394>

### Schéma výhybky:





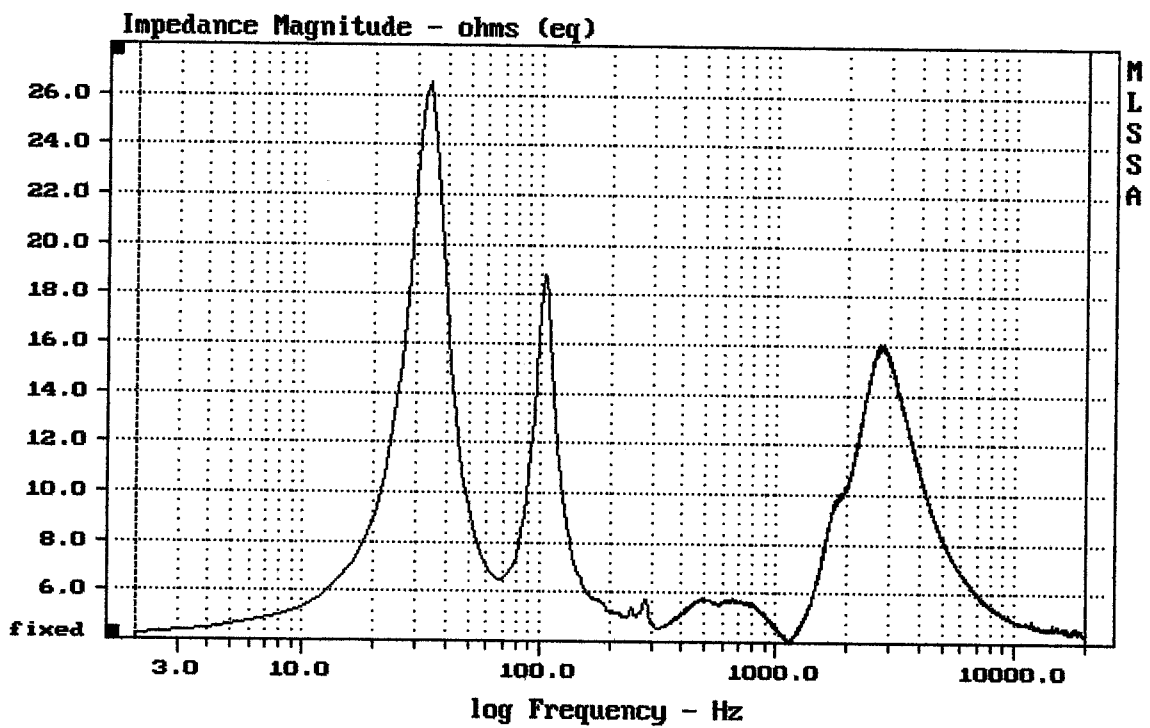

---

CURSOR:  $\Delta y = 25.7151$   $x = 30007.1014$  (2704)

---

12HPL76/4ohm + DE82 + BP91

MLSSA: Frequency Domain

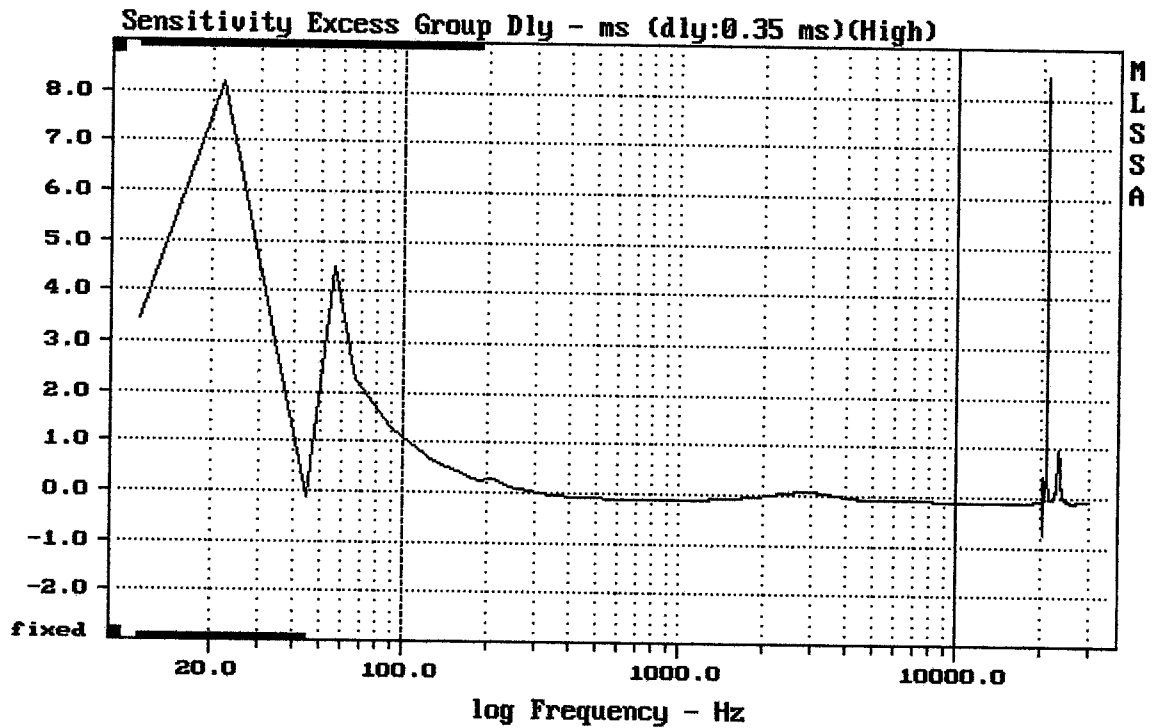



---

mean: 6.276, rms: 6.92, std: 2.915, max: 26.54, min: 4.014

---

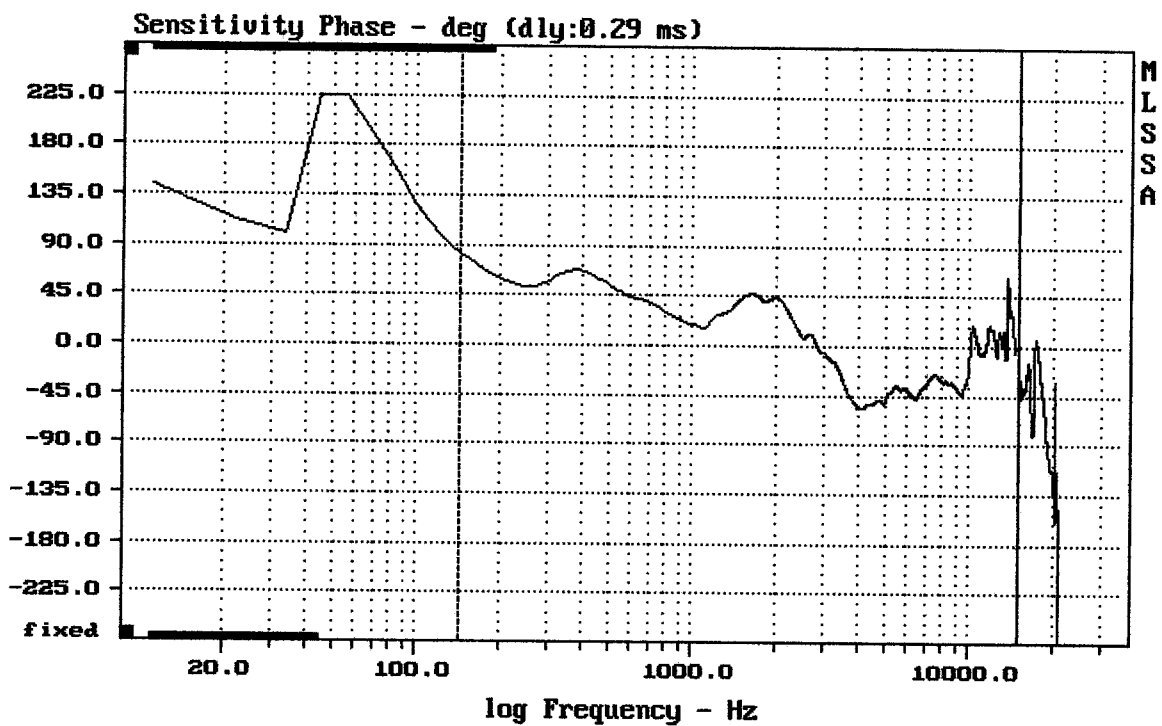
12HPL76/4ohm + DE82 + BP91



mean: -0.05479, rms: 0.104, std: 0.08837, max: 1.091, min: -0.1148

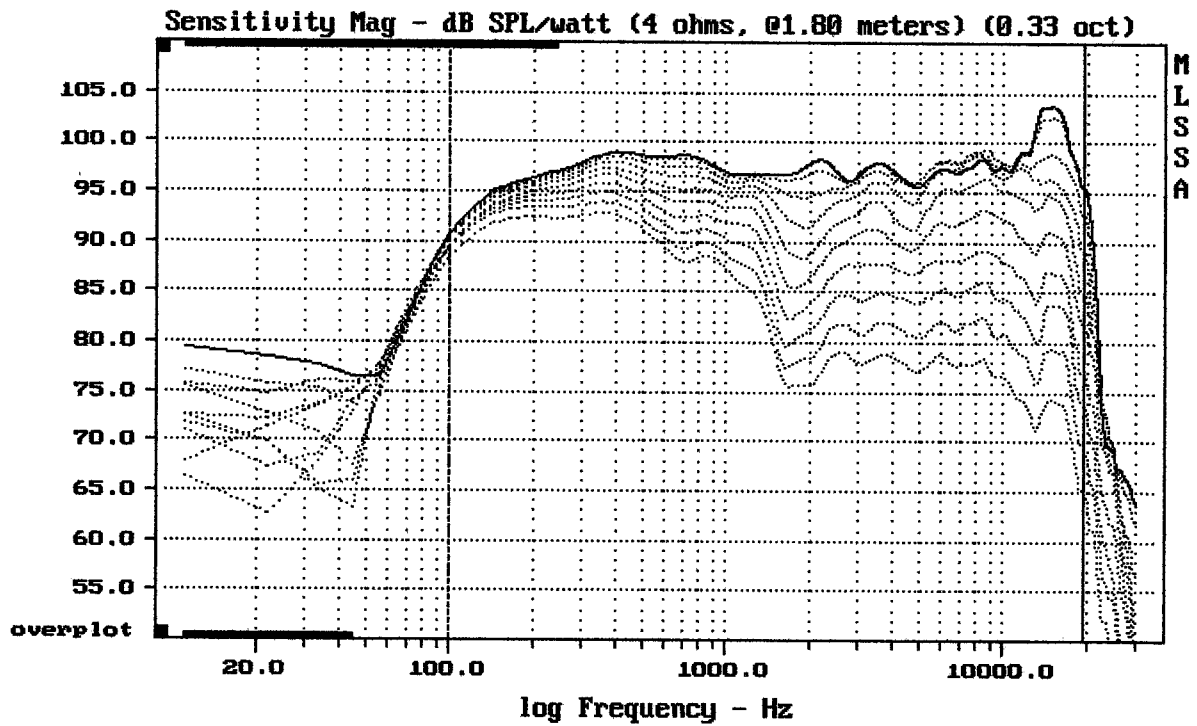
12HPL76/4ohm + DE82 + BP91

MLSSA: Frequency Domain



mean: -8.219, rms: 32.73, std: 31.68, max: 82.4, min: -56.67

12HPL76/4ohm + DE82 + BP91



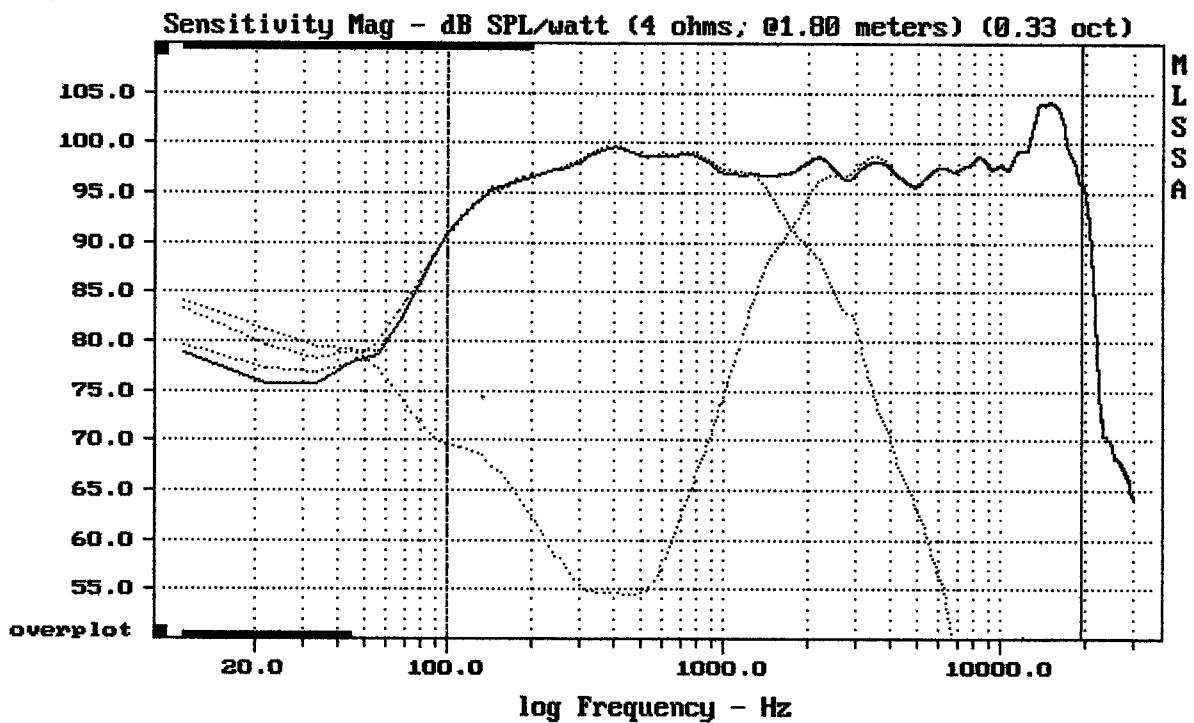

---

Overlay Compare: dev= +21/-8.4, std= 6, avg= -23

---

12HPL76/4ohm + DE82 + BP91

MLSSA: Frequency Domain

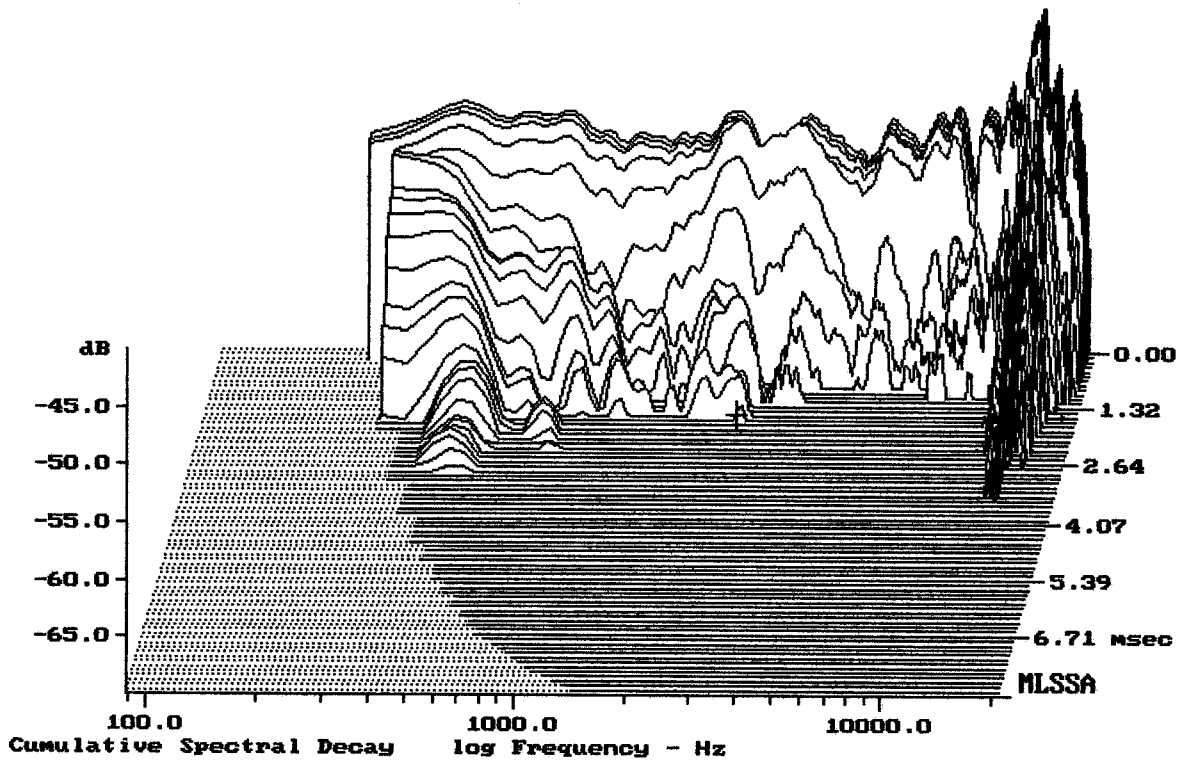



---

Level (100:19509 Hz) = 98.15 dB SPL/watt (4 ohms, @1.80 meters) (0.33 oct)

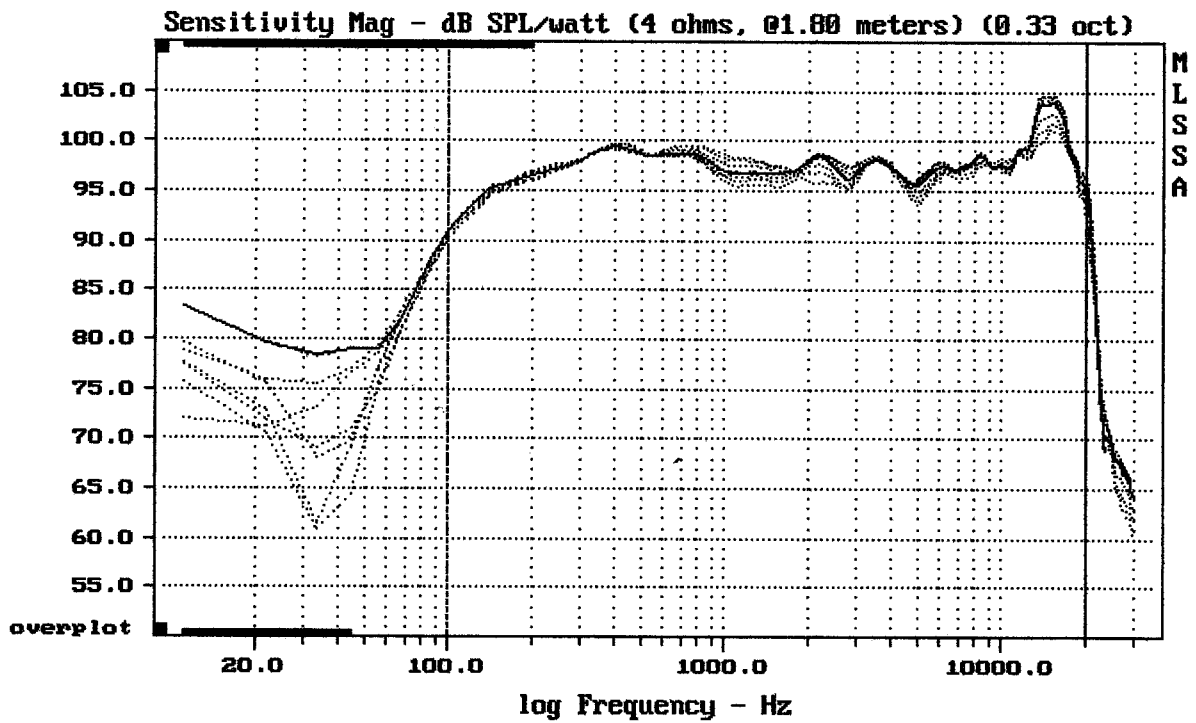
---

12HPL76/4ohm + DE82 + BP91



-69.52 dB, 2486 Hz (56), 1.650 msec (16)

DTTO



Overlay Compare: dev= +2.8/-2.9, std= 1.3, avg= -1.1

12HPL76/4ohm + DE82 + BP91