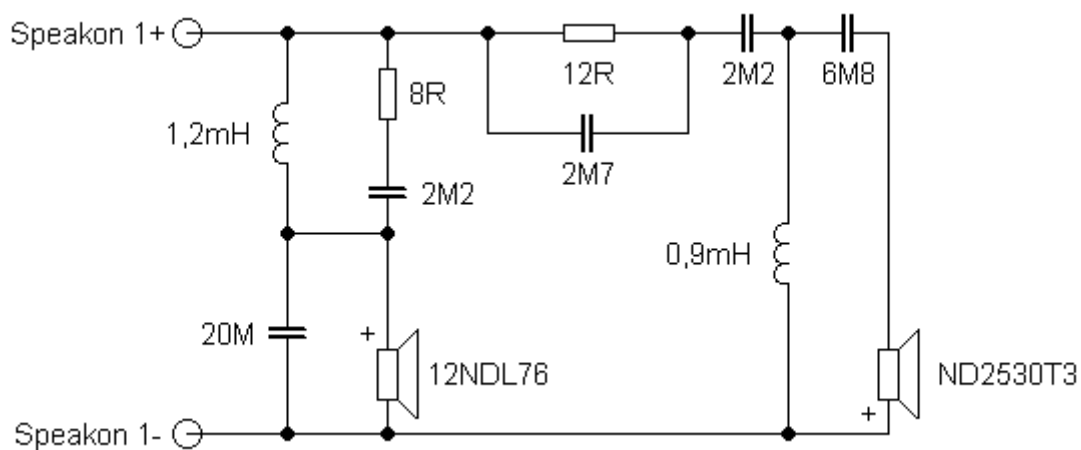


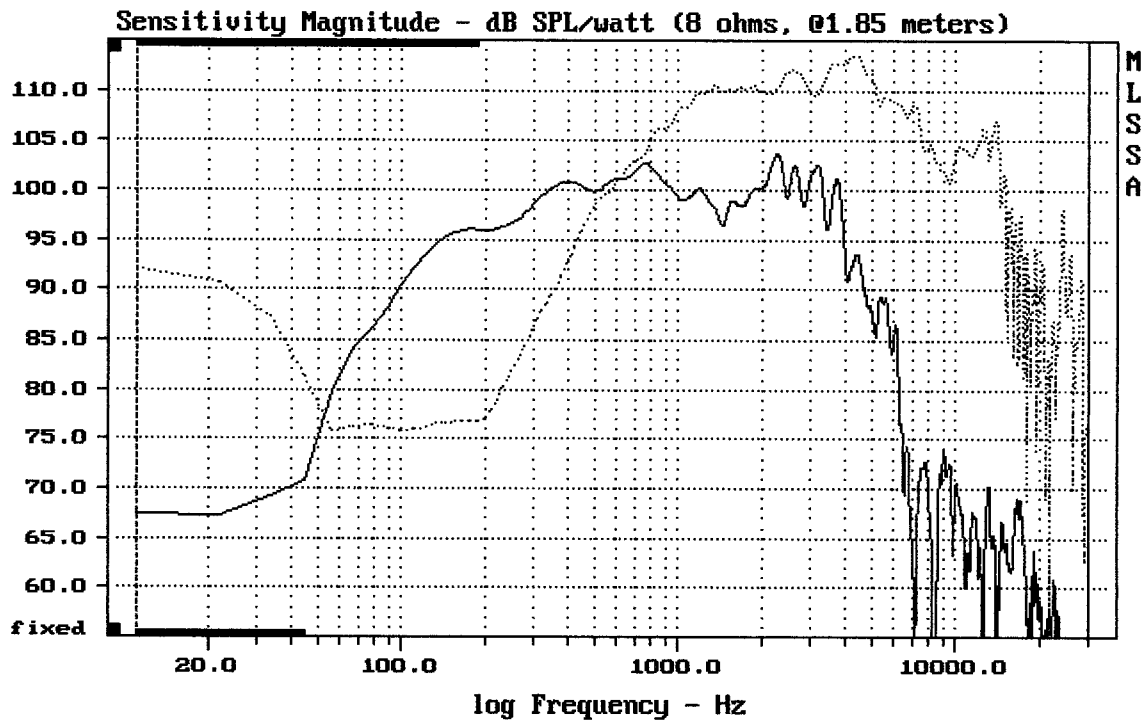
Sestava B&C Speakers 12NDL76 + RCF ND2530T3 + Megaton B8575

Osazení:

- B&C Speakers 12NDL76 8/Ohm
<http://eshop.prodance.cz/DetailPage.asp?DPG=82724>
- RCF ND2530T3 8/Ohm
<http://eshop.prodance.cz/DetailPage.asp?DPG=79636>
- Megaton B8575
<http://eshop.prodance.cz/DetailPage.asp?DPG=84261>

Schéma výhybky:

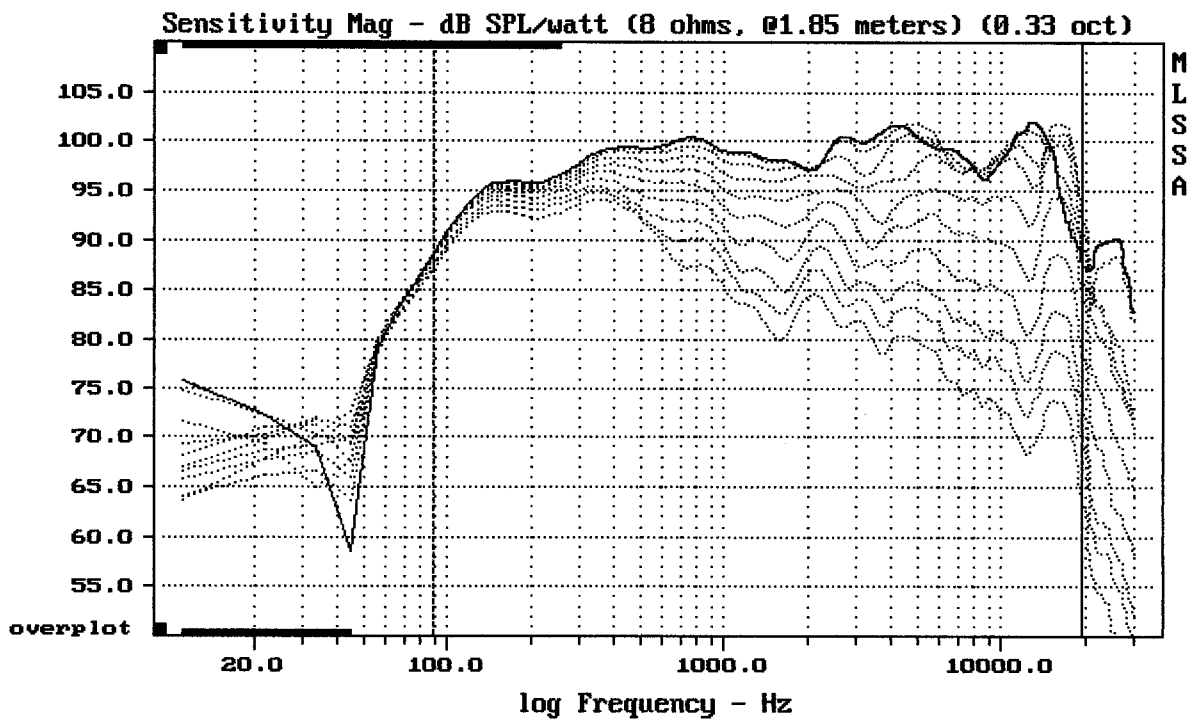




CURSOR: dy = 30.5819 x = 30007.1014 (2704)

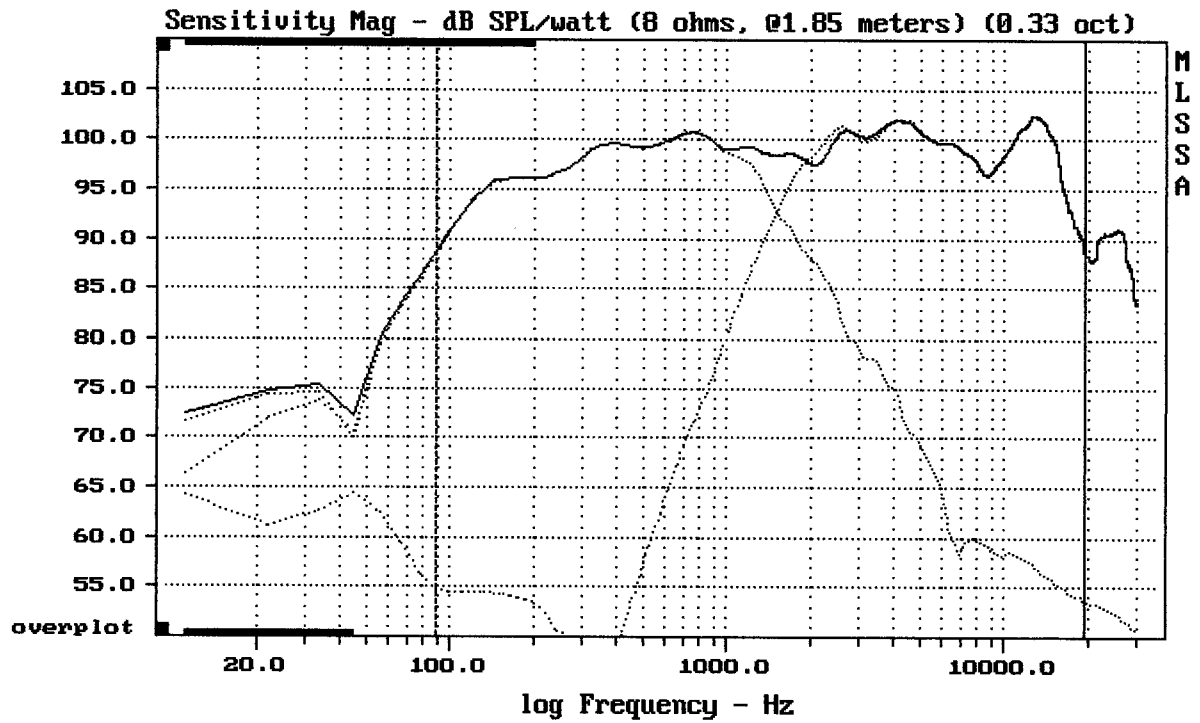
12NDL76 + ND2530 + B8575

MLSSA: Frequency Domain



Overlay Compare: dev= +21/-11, std= 5.7, avg= -23

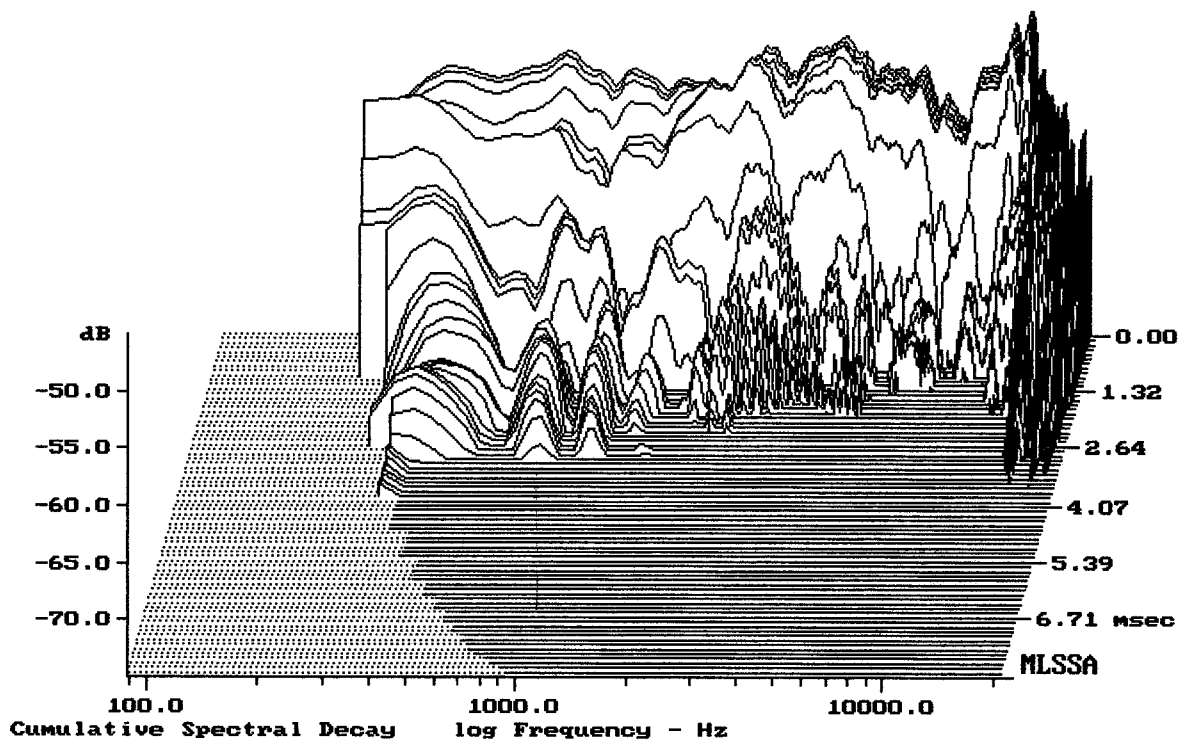
12NDL76 + ND2530 + B8575



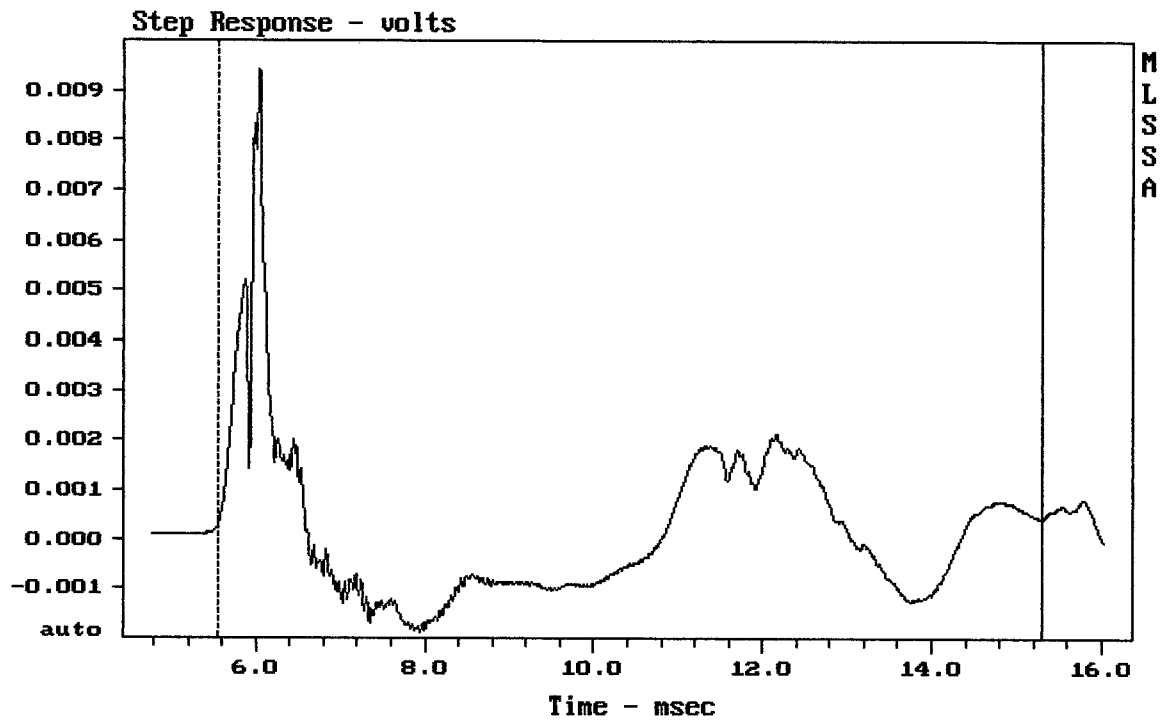
Level (89:19498 Hz) = 98.96 dB SPL/watt (8 ohms, @1.85 meters) (0.33 oct)

12NDL76 + ND2530 + B8575

MLSSA: Frequency Domain



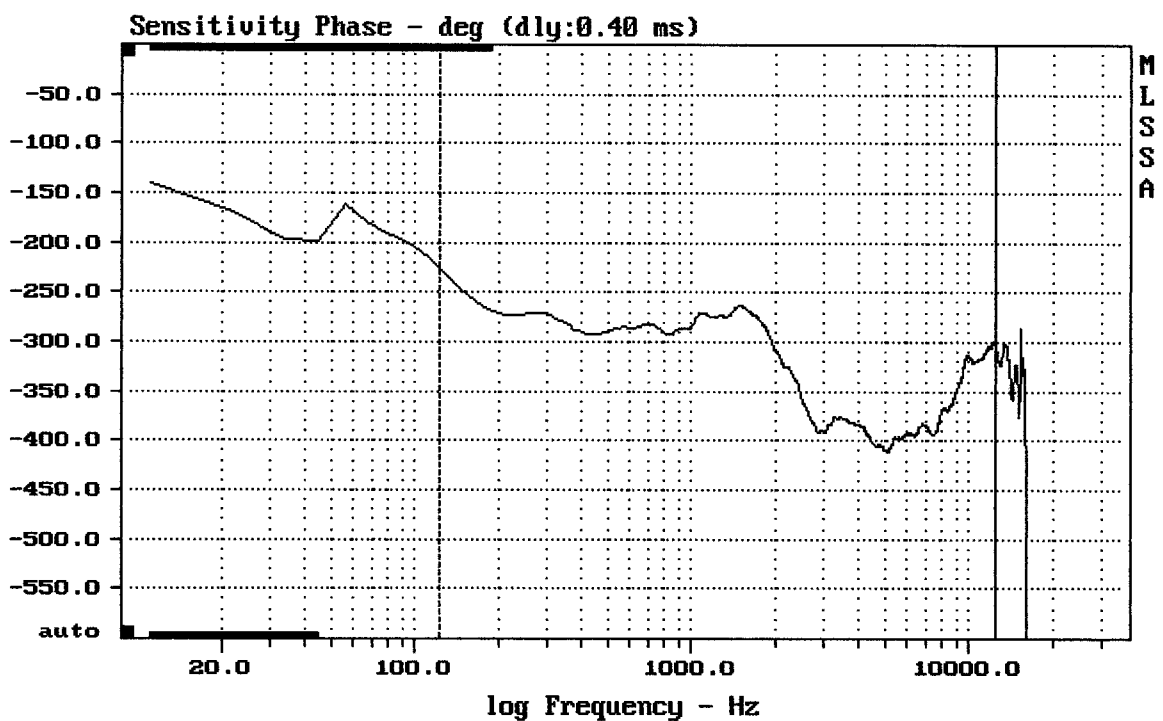
-74.29 dB, 2175 Hz (49), 2.200 msec (21)



mean: 0.000178, rms: 0.00163, std: 0.00162, max: 0.009403, min: -0.001878

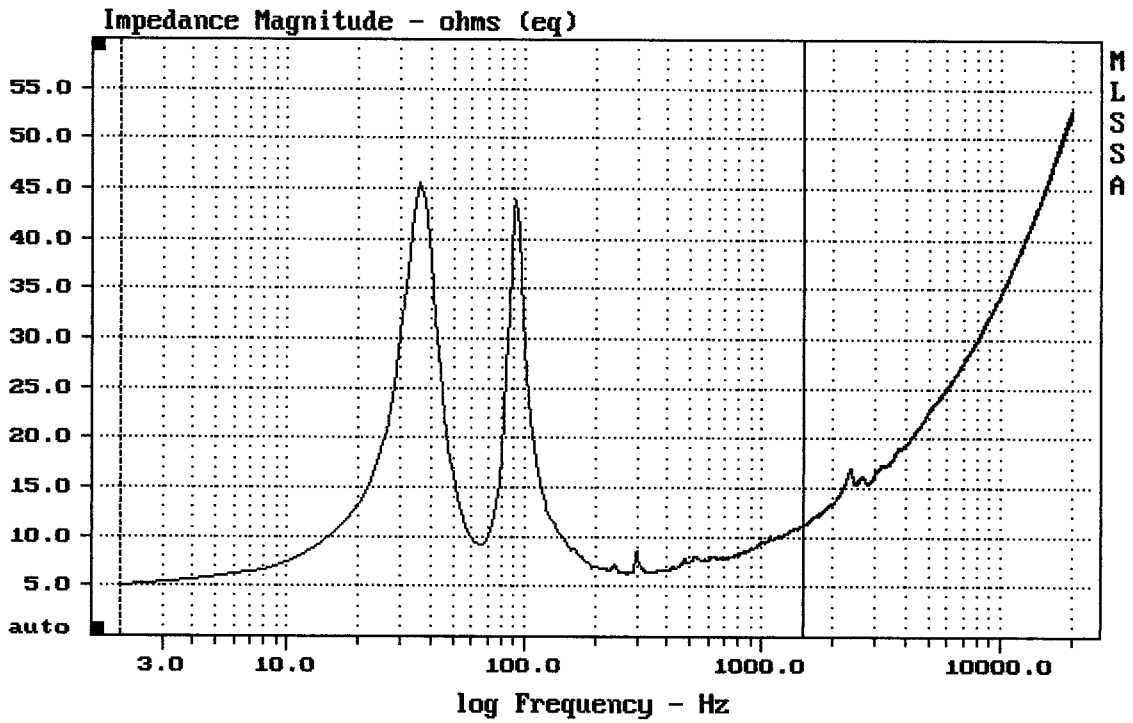
12NDL76 + ND2530 + B8575

MLSSA: Time Domain



mean: -347.7, rms: 350.5, std: 43.85, max: -225.4, min: -410.7

12NDL76 + ND2530 + B8575



mean: 9.671, rms: 10.78, std: 4.772, max: 45.63, min: 5.142

12NDL76 BEDNA CVOLIGA

MLSSA: Frequency Domain

