

Sestava B&C Speakers 12PE32 + DE16 + ME10

Osazení:

- B&C Speakers 12PE32 8/Ohm

<http://eshop.prodance.cz/DetailPage.asp?DPG=82733>

- B&C Speakers DE16 8/Ohm

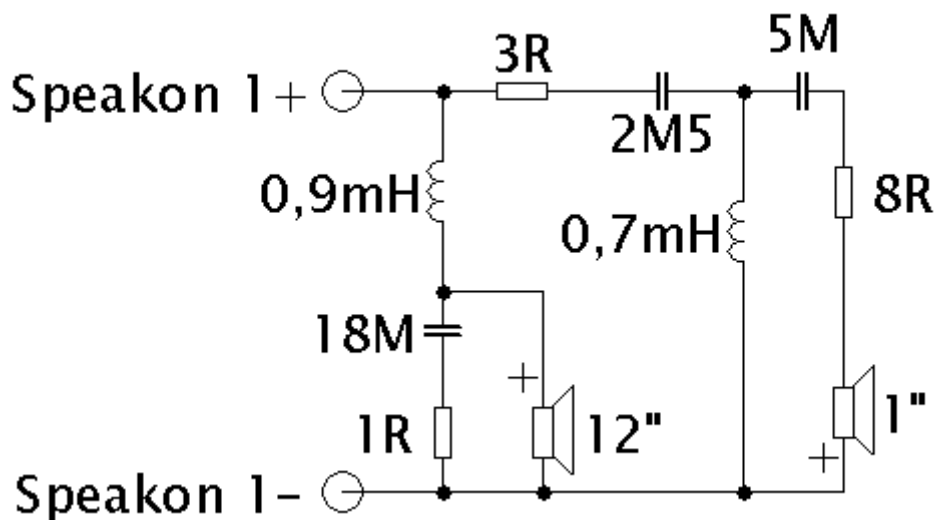
pozn.: DE16 se již nedodává, jako náhrada se dodává DE160

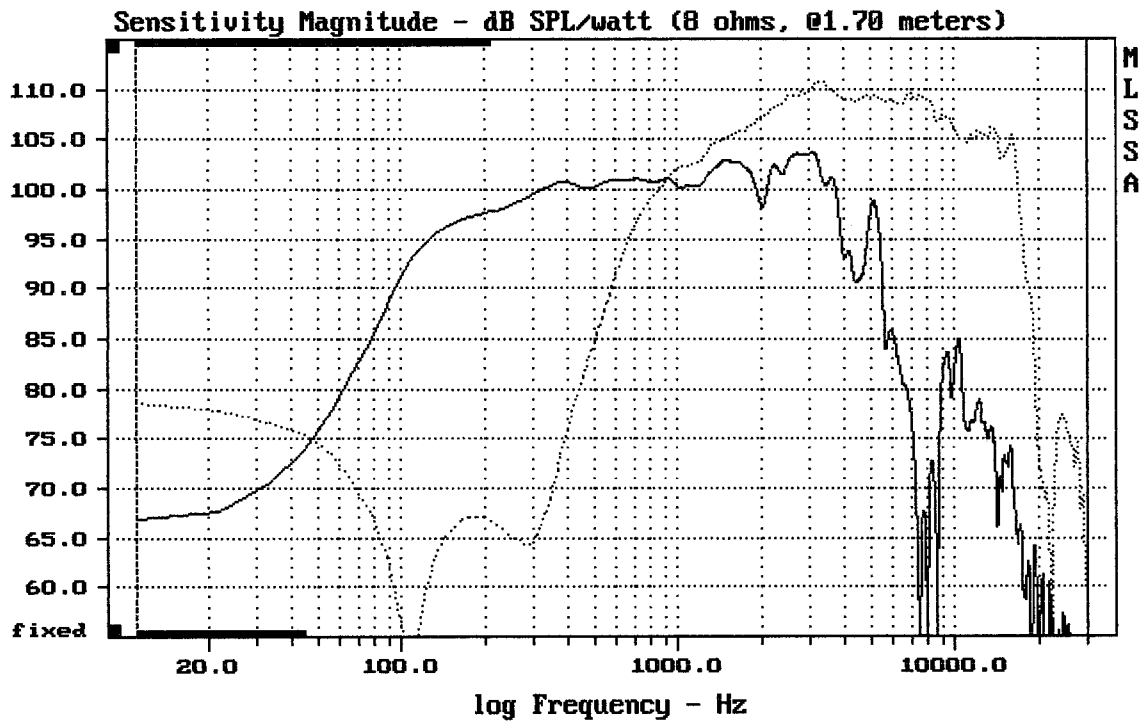
<http://eshop.prodance.cz/DetailPage.asp?DPG=82300>

- B&C Speakers ME10

<http://eshop.prodance.cz/DetailPage.asp?DPG=79956>

Schéma výhybky:

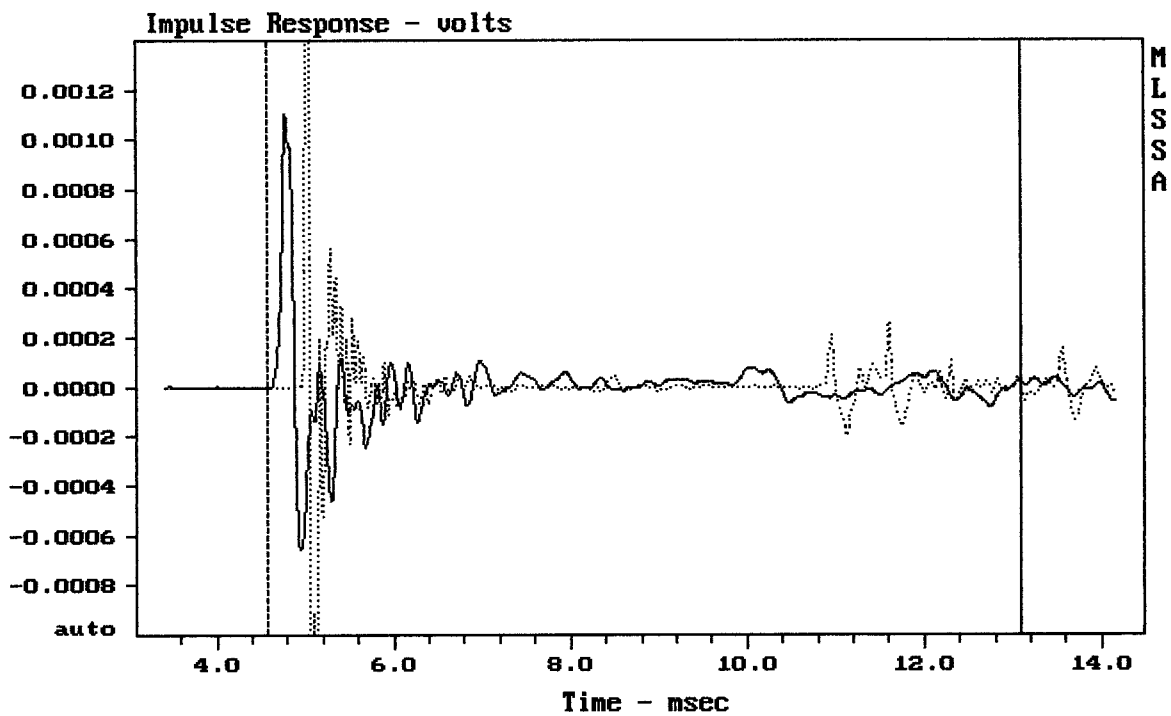




CURSOR: $dy = 9.20721$ $x = 30007.1014$ (2704)

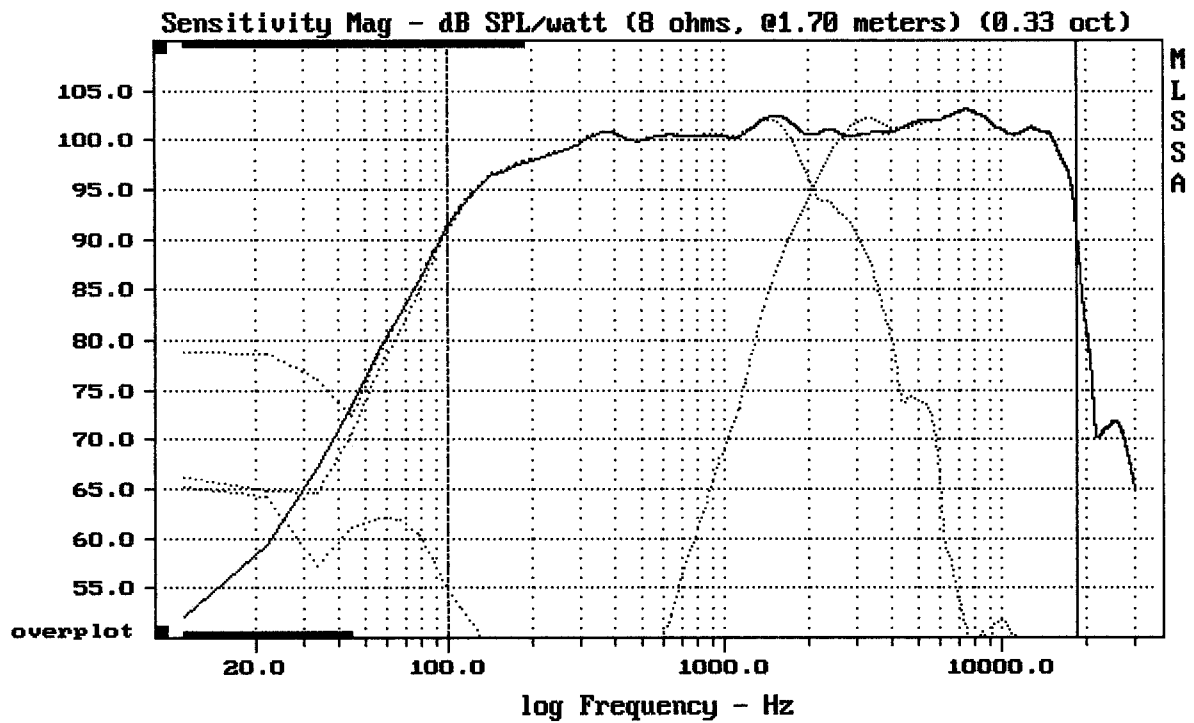
12PE32 + DE16 + ME10

MLSSA: Frequency Domain



CURSOR: $dy = -3.11033e-005$ $x = 13.1010$ (1191)

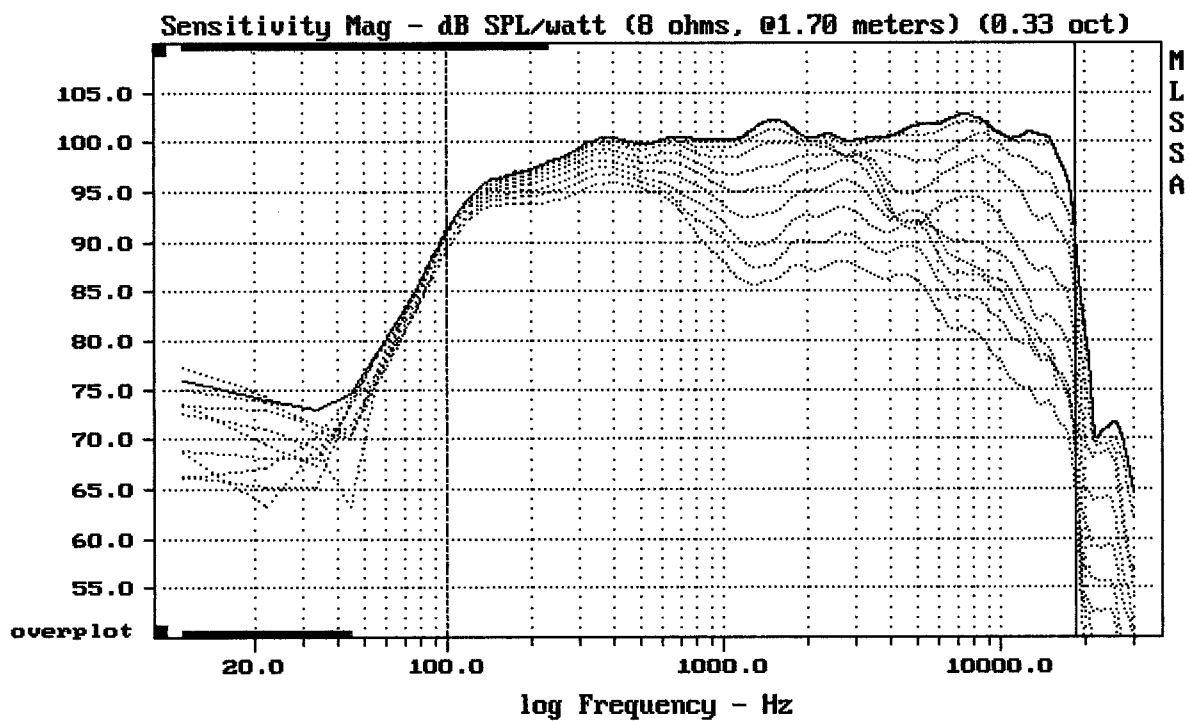
12PE32 + DE16 + ME10



Level (100:18499 Hz) = 100.40 dB SPL/watt (8 ohms, @1.70 meters) (0.33 oct)

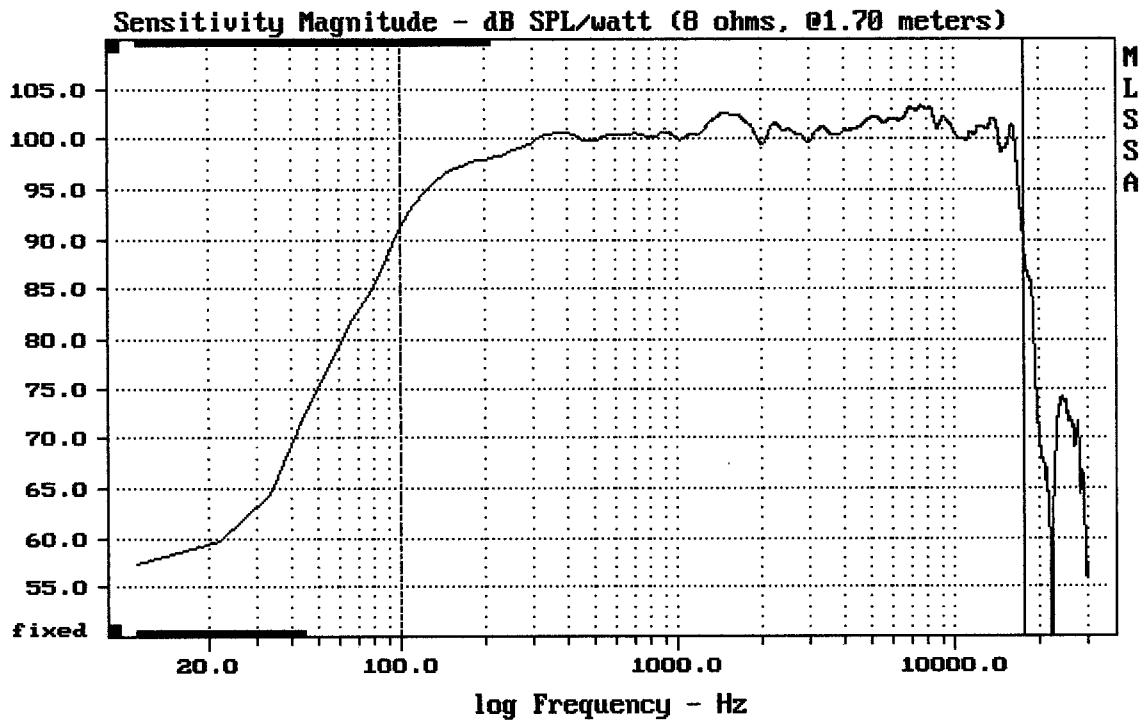
12PE32 + DE16 + ME10

MLSSA: Frequency Domain



Overlay Compare: dev= +19/-6.2, std= 5.9, avg= -21

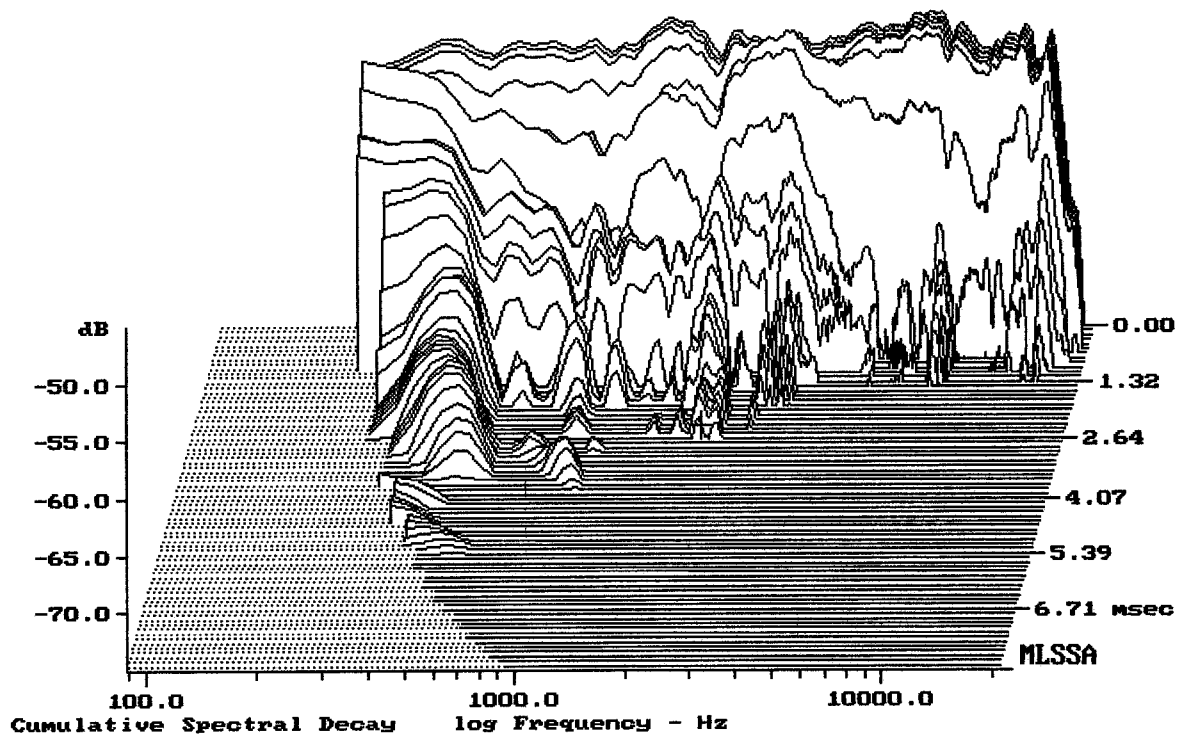
12PE32 + DE16 + ME10



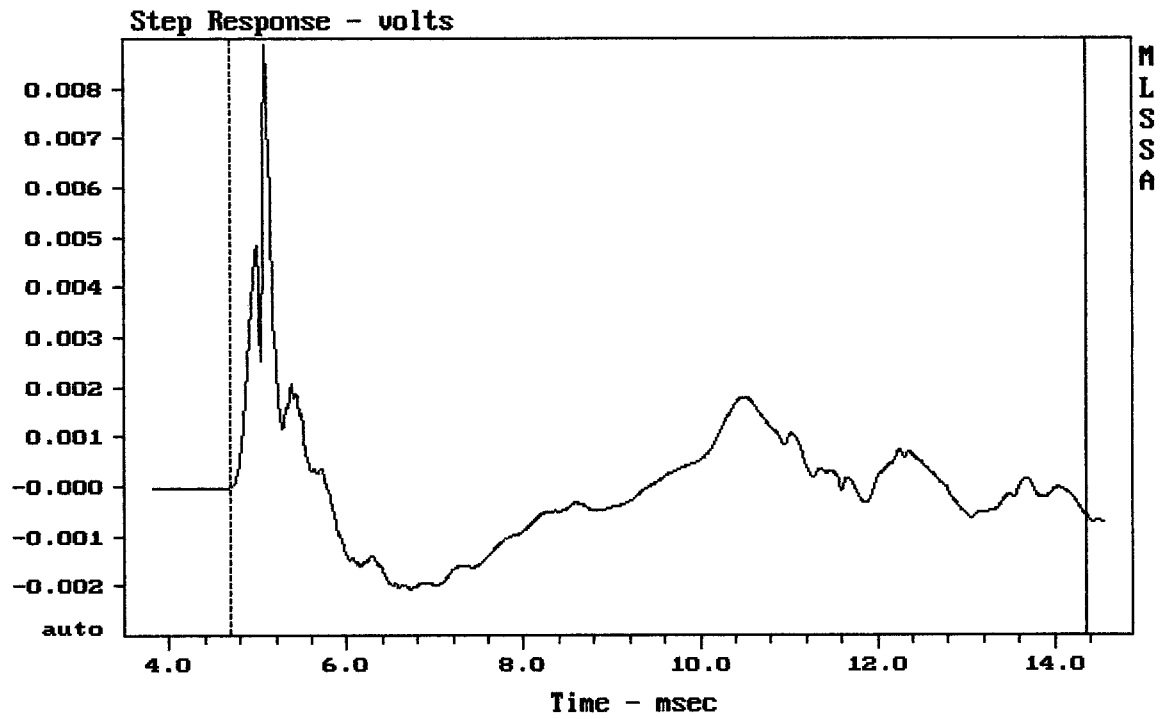
mean: 100.84, rms: 101.01, std: 1.56, max: 103.29, min: 88.84

12PE32 + DE16 + ME10

MLSSA: Frequency Domain



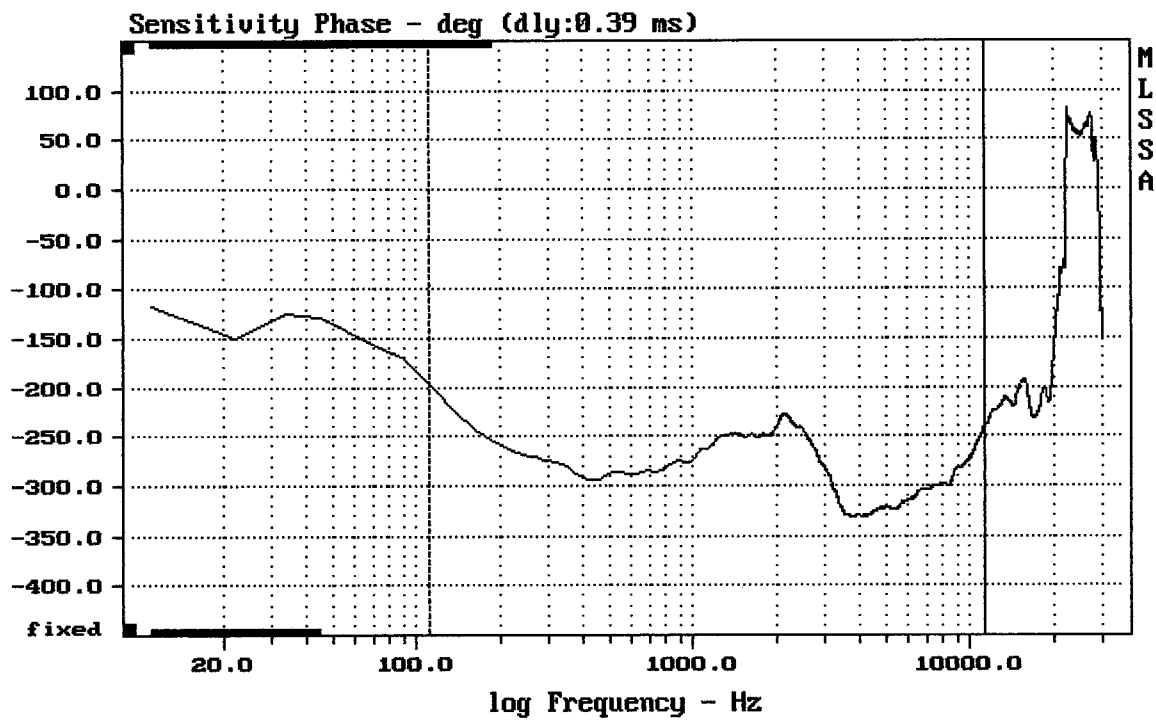
-73.83 dB, 2175 Hz (49), 2.640 msec (25)



mean: $-1.131e-005$, rms: 0.00135, std: 0.00135, max: 0.000005, min: -0.002054

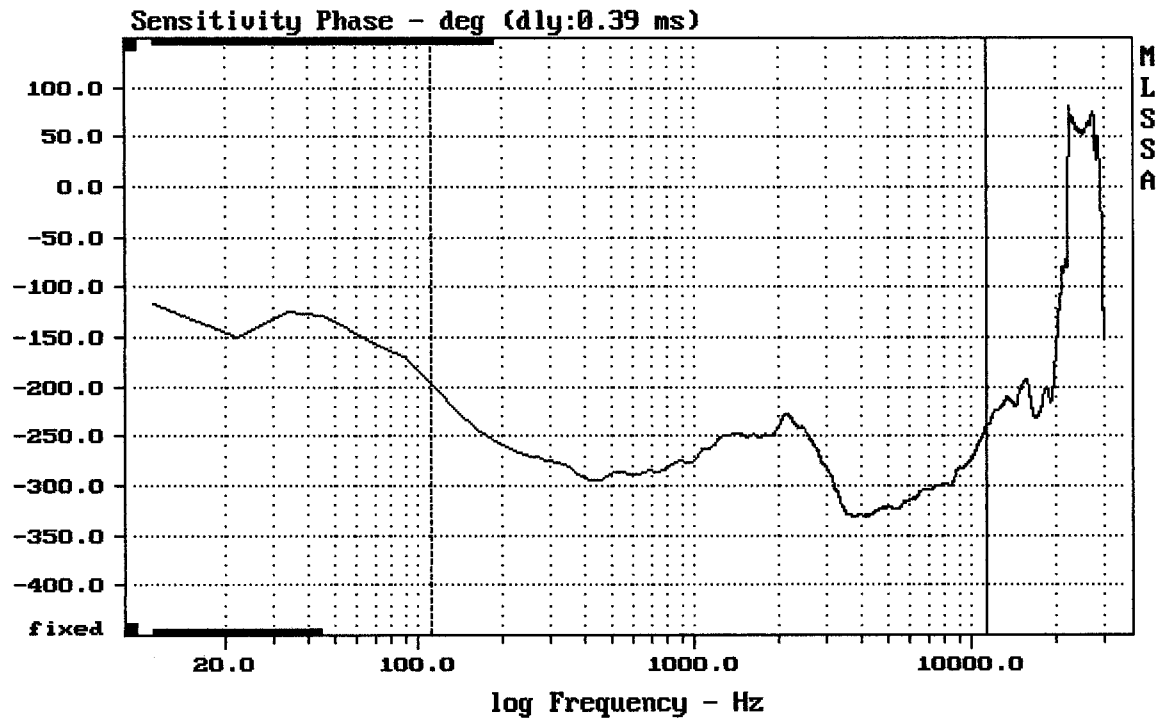
12PE32 + DE16 + ME10

MLSSA: Time Domain



mean: -287.9, rms: 289.4, std: 29.1, max: -196.2, min: -331.3

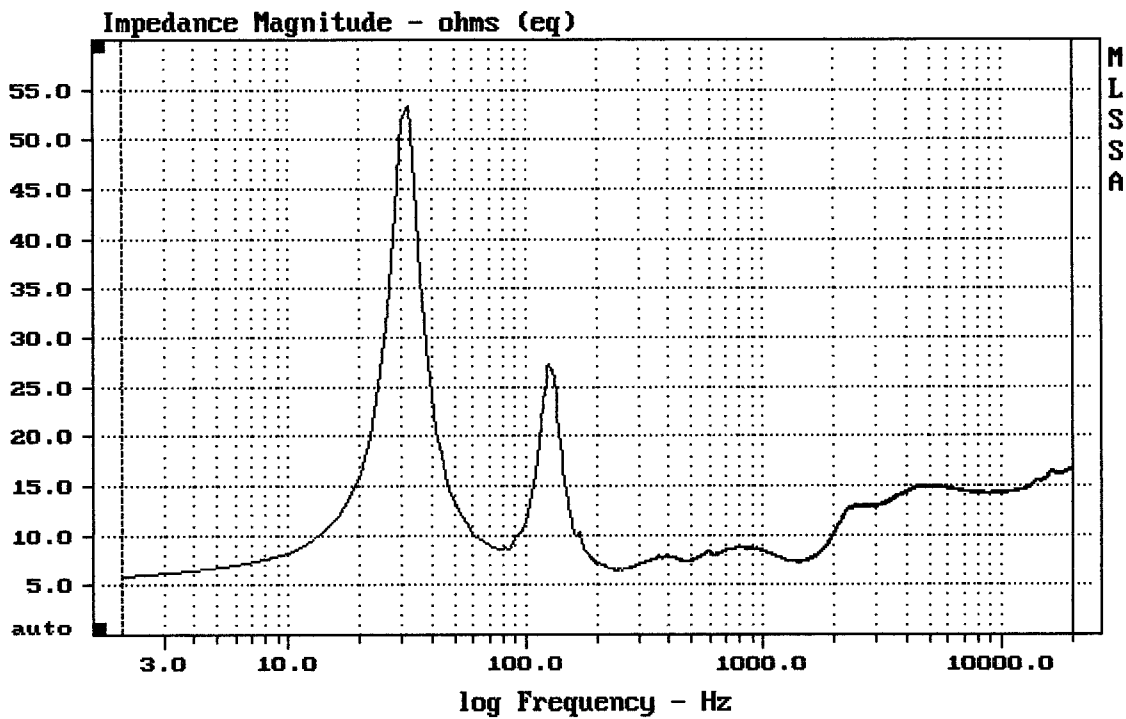
12PE32 + DE16 + ME10



mean: -287.9, rms: 289.4, std: 29.1, max: -196.2, min: -331.3

12PE32 + DE16 + ME10

MLSSA: Frequency Domain



mean: 14.33, rms: 14.54, std: 2.427, max: 53.43, min: 5.816

12PE32 + DE16 + ME10