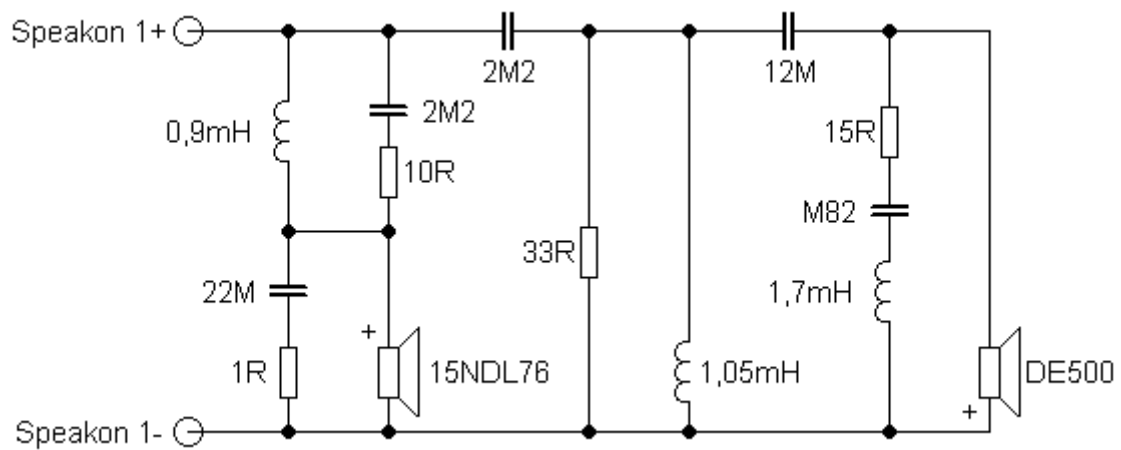


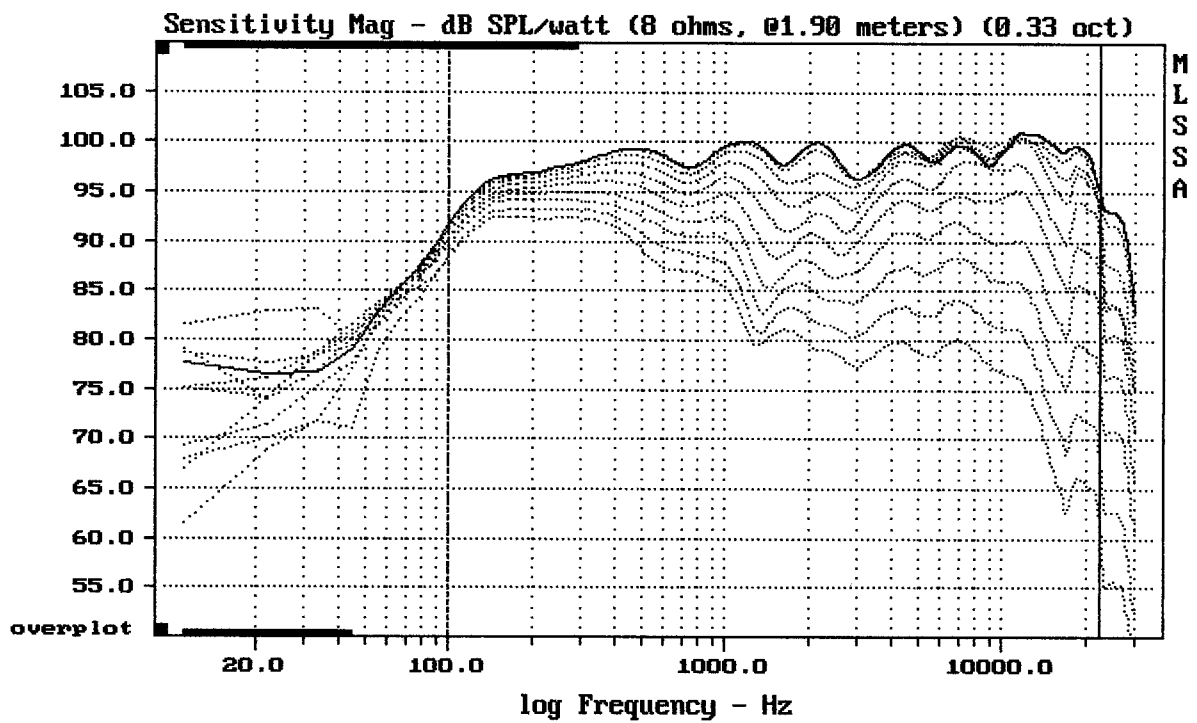
## Sestava B&C Speakers 15NDL76 + DE500 + Megaton A1160

### Osazení:

- B&C Speakers 15NDL76 8/Ohm  
<http://eshop.prodance.cz/DetailPage.asp?DPG=82860>
- B&C Speakers DE500 8/Ohm  
<http://eshop.prodance.cz/DetailPage.asp?DPG=82312>
- Megaton A1160  
<http://eshop.prodance.cz/DetailPage.asp?DPG=83839>

### Schéma výhybky:



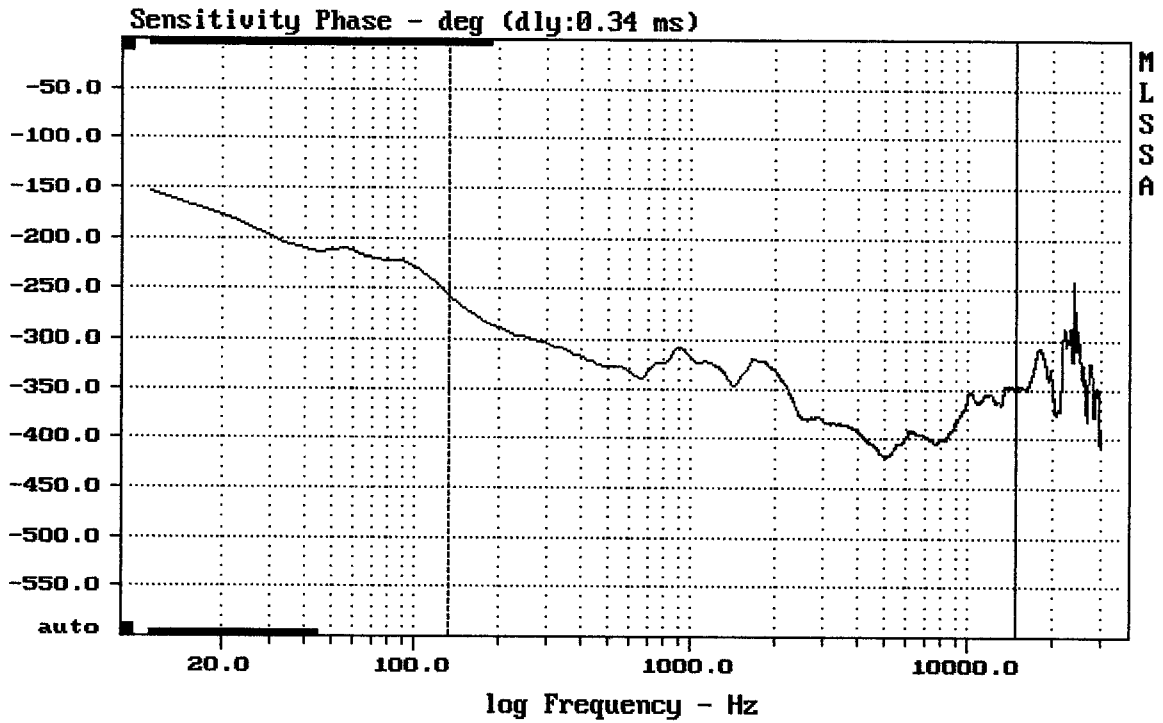



---

Overlay Compare: dev= +22/-11, std= 7.1, avg= -26

---

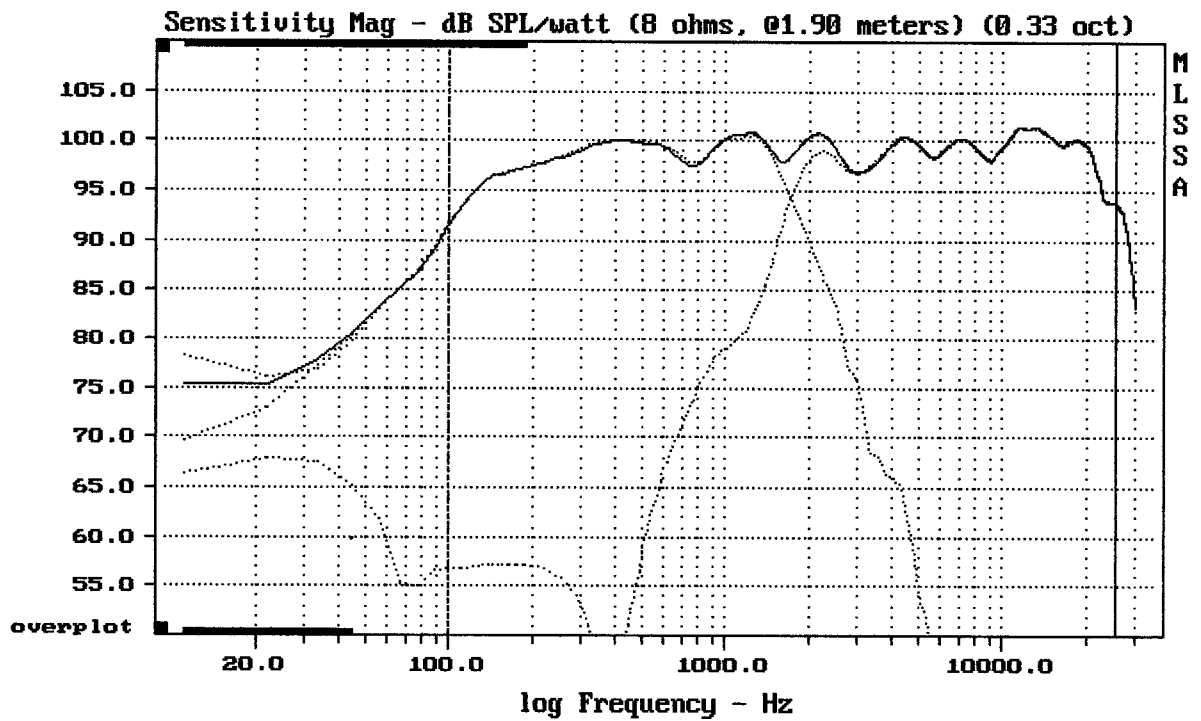
15NDL76 + DE500 + A1160



mean: -370.9, rms: 372, std: 28.02, max: -257, min: -418

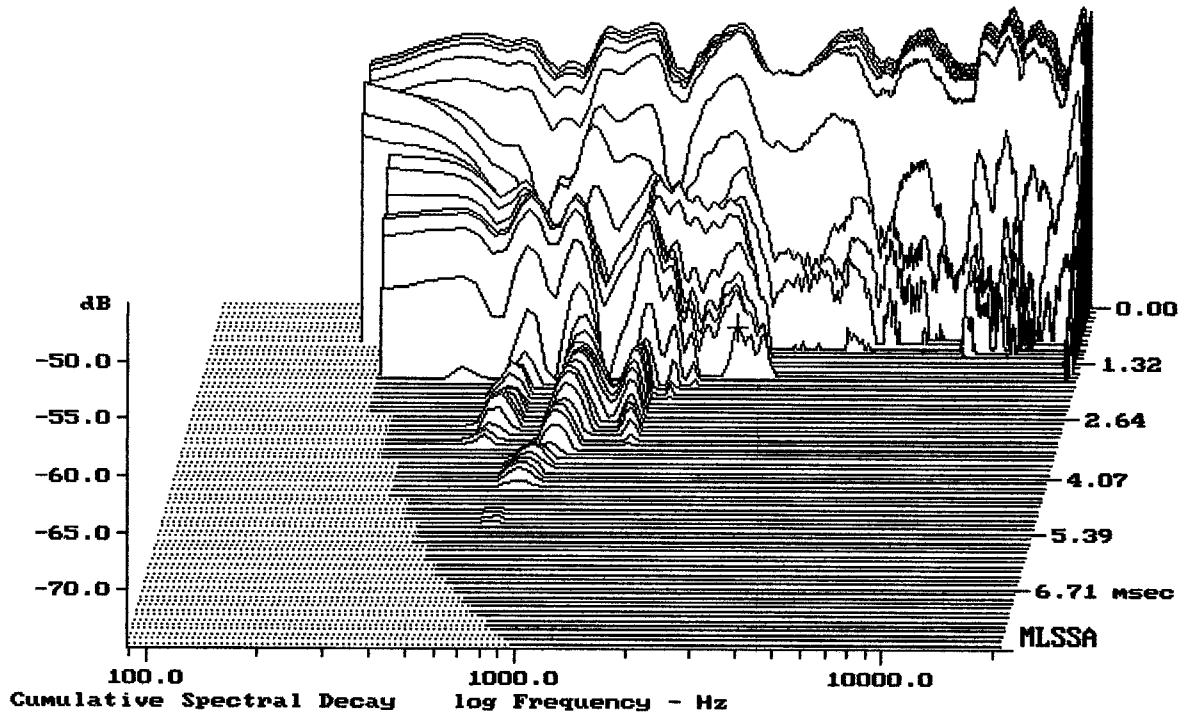
15NDL76 + DE500 + A1160

MLSSA: Frequency Domain



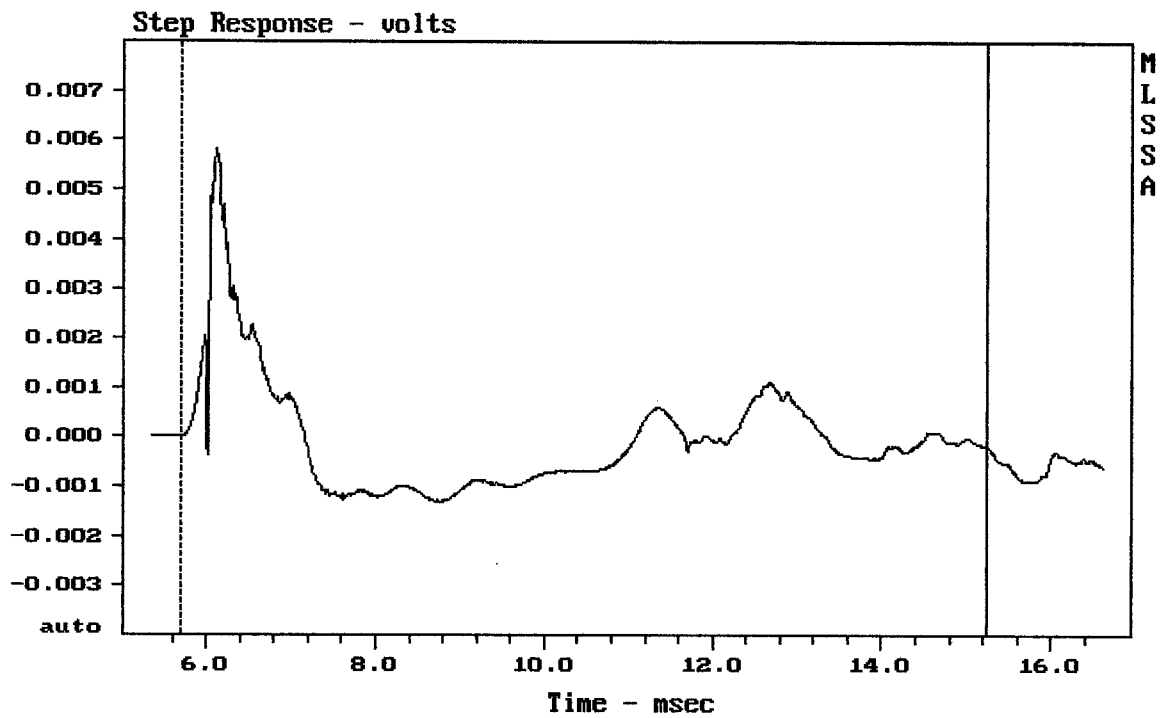
Level (100:25502 Hz) = 99.05 dB SPL/watt (8 ohms, @1.90 meters) (0.33 oct)

15NDL76 + DE500 + A1160



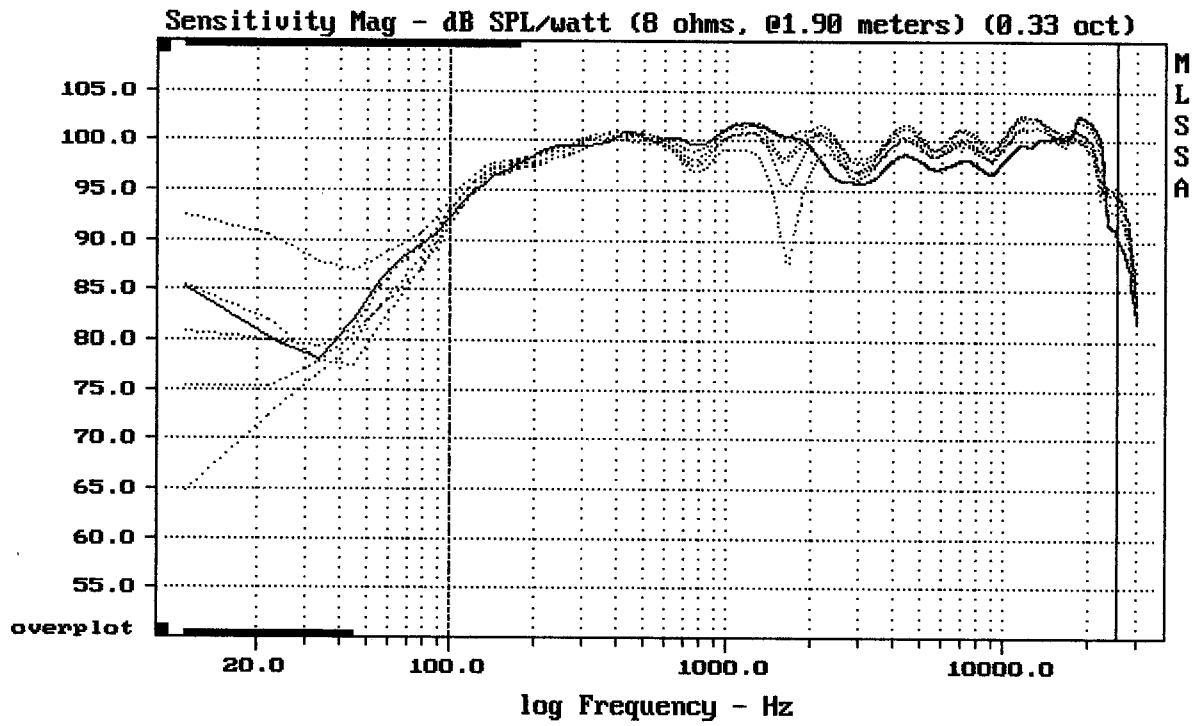
-70.76 dB, 2486 Hz (56), 1.650 msec (16)

DTO



mean: -6.097e-005, rms: 0.001133, std: 0.001131, max: 0.005826, min: -0.001311

15NDL76 + DE500 + A1160



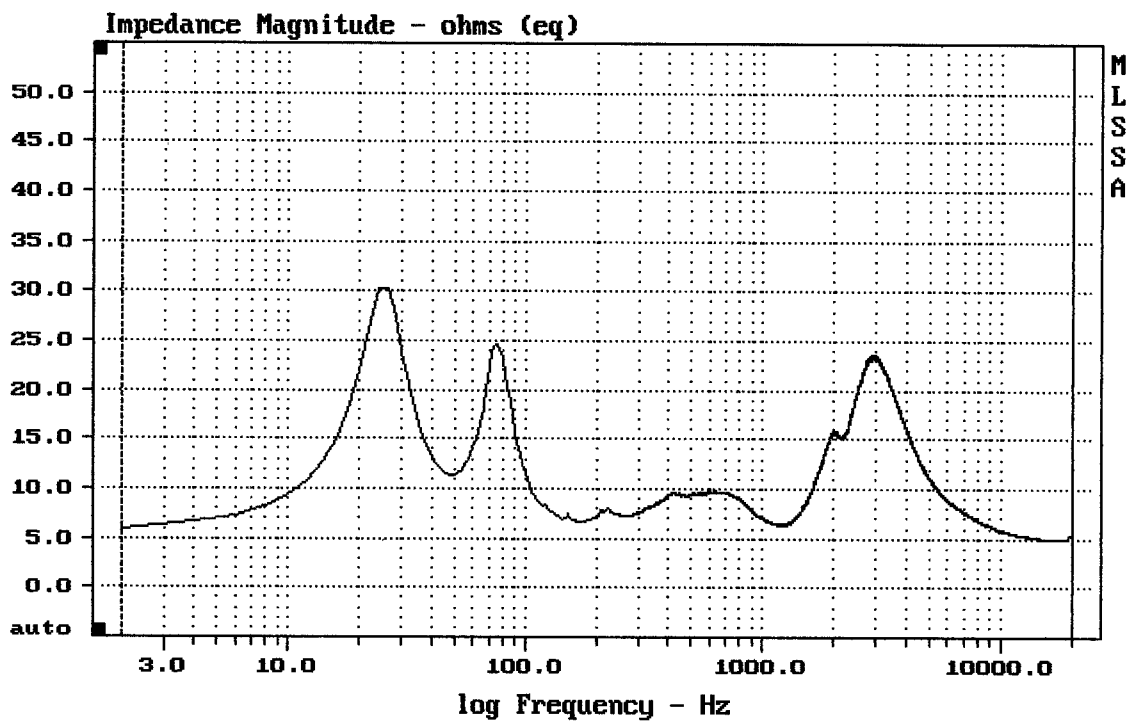

---

mean: 99.32, rms: 99.60, std: 1.99, max: 102.54, min: 87.81

---

15NDL76 + DE500 + A1160

MLSSA: Frequency Domain




---

mean: 8.053, rms: 9.316, std: 4.685, max: 30.29, min: 4.84

---

15NDL76 + DE500 + A1160