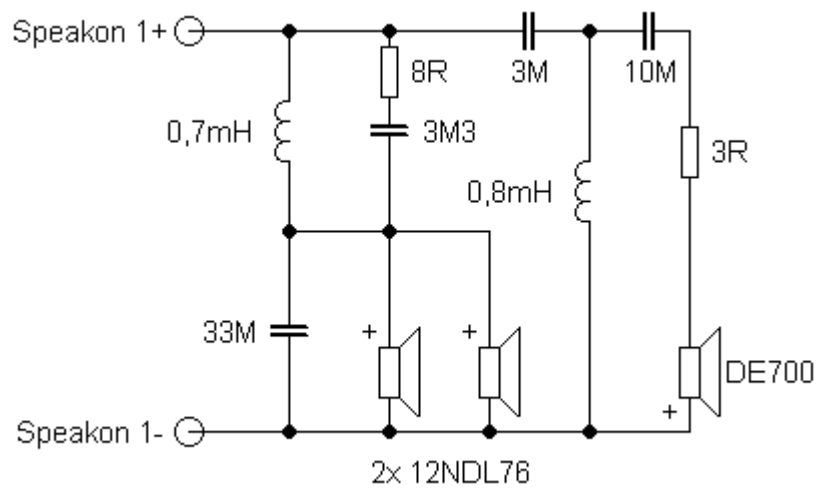


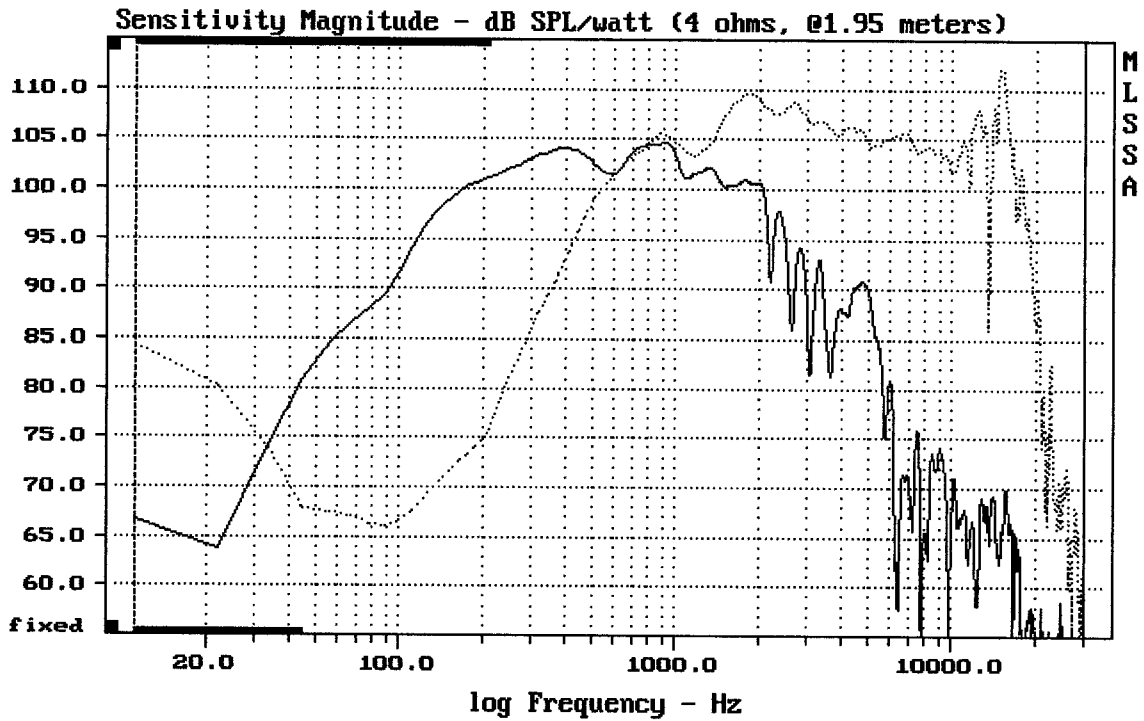
Sestava 2x B&C Speakers 12NDL76 + DE700 + ME90

Osazení:

- 2x B&C Speakers 12NDL76 8/Ohm
<http://eshop.prodance.cz/DetailPage.asp?DPG=82724>
- B&C Speakers DE700 8/Ohm
<http://eshop.prodance.cz/DetailPage.asp?DPG=82319>
- B&C Speakers ME90
<http://eshop.prodance.cz/DetailPage.asp?DPG=80246>

Schéma výhybky:

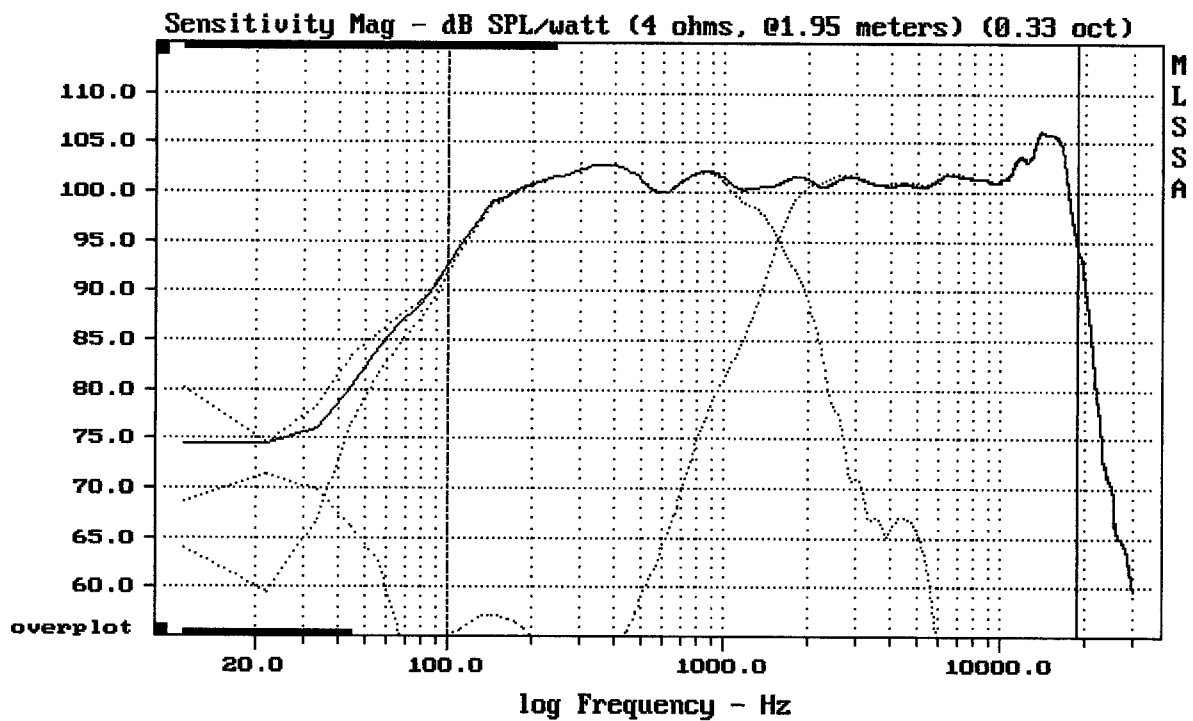




CURSOR: $\Delta y = 18.2755$ $x = 30007.1014$ (2704)

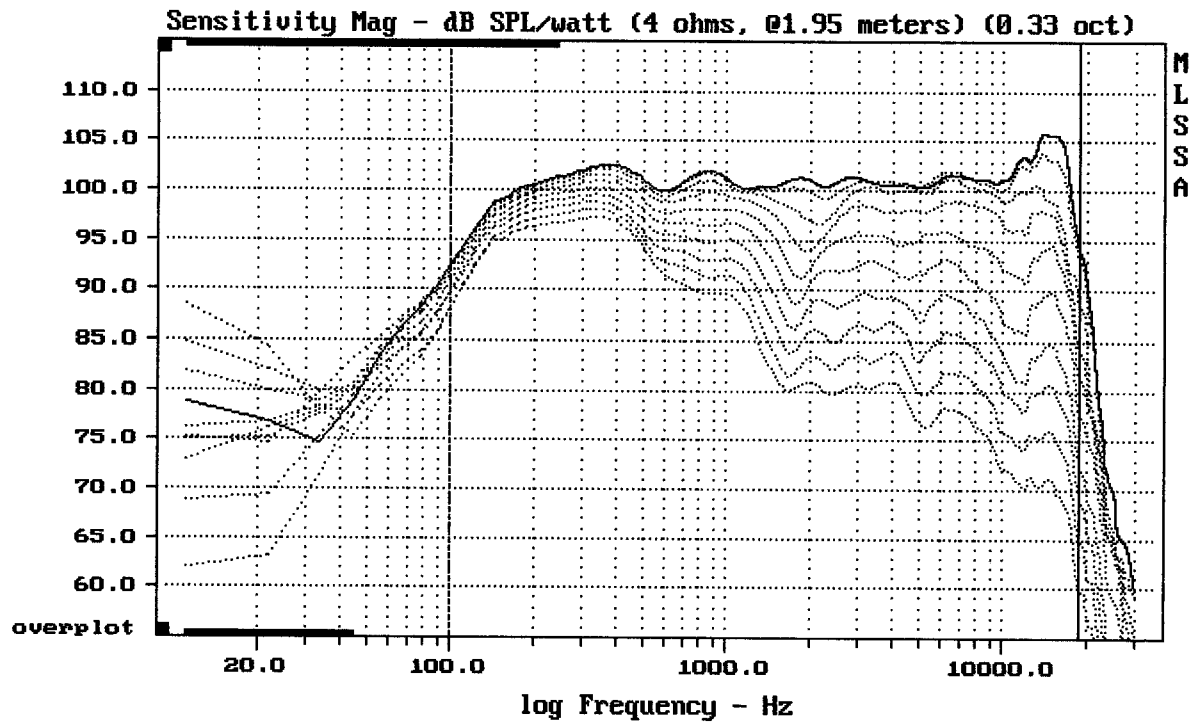
2x 12NDL76+DE700+ME90

MLSSA: Frequency Domain



Level (100:19010 Hz) = 101.40 dB SPL/watt (4 ohms, @1.95 meters) (0.33 oct)

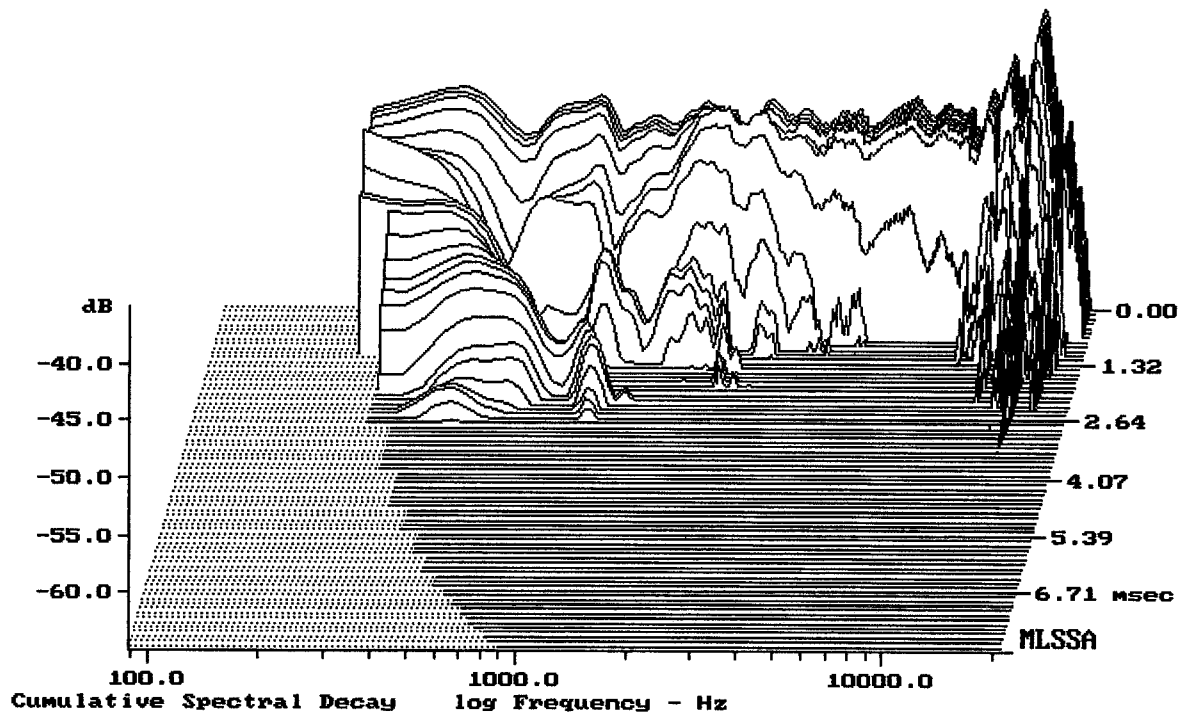
2x 12NDL76+DE700+ME90



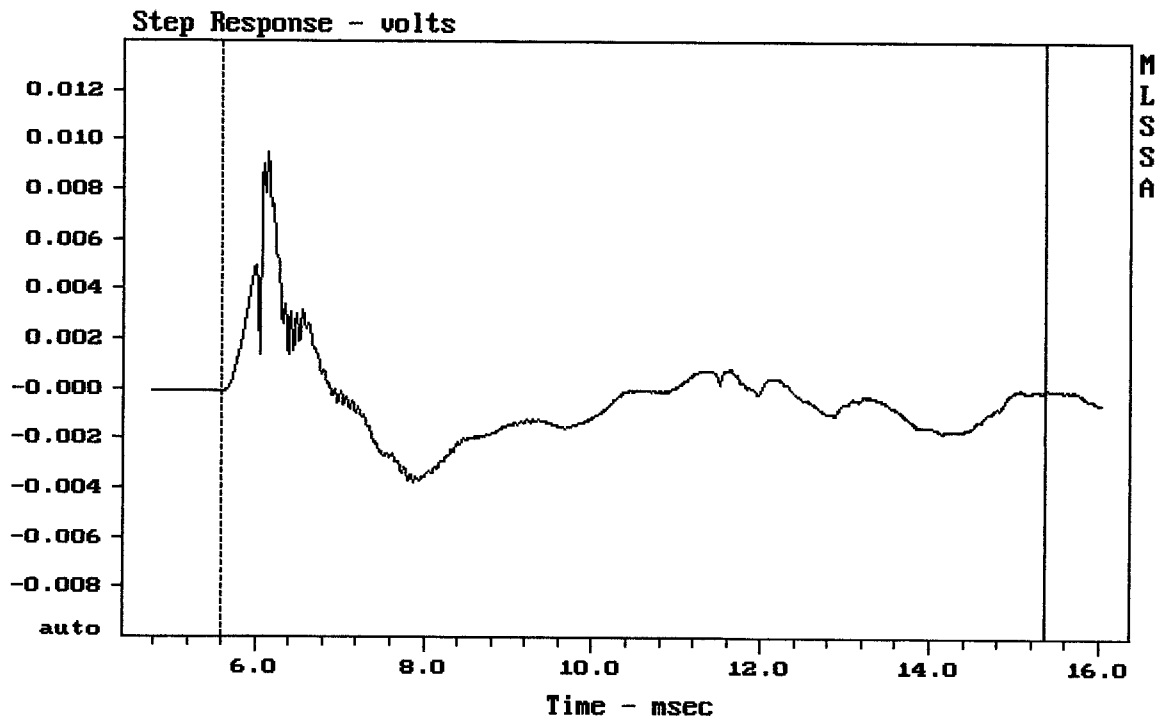
Overlay Compare: dev= +23/-8.8, std= 7.3, avg= -27

2x 12NDL76+DE700+ME90

MLSSA: Frequency Domain



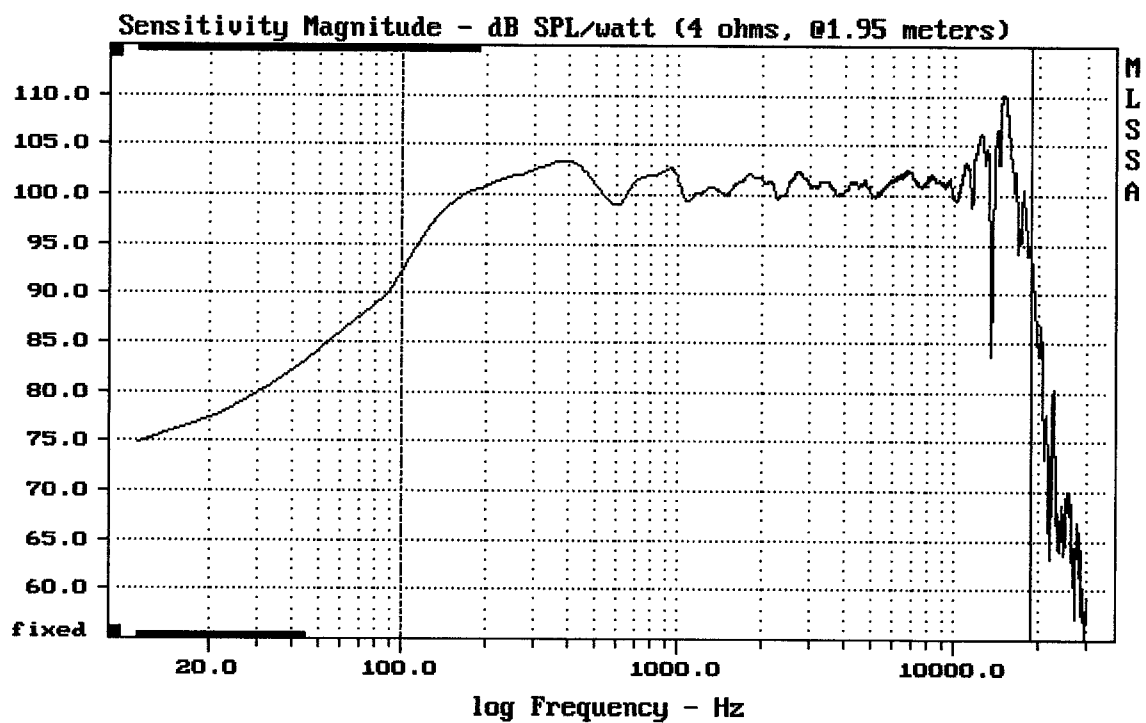
-63.48 dB, 2219 Hz (50), 1.870 msec (18)



mean: -0.0004453, rms: 0.001884, std: 0.00183, max: 0.009453, min: -0.003731

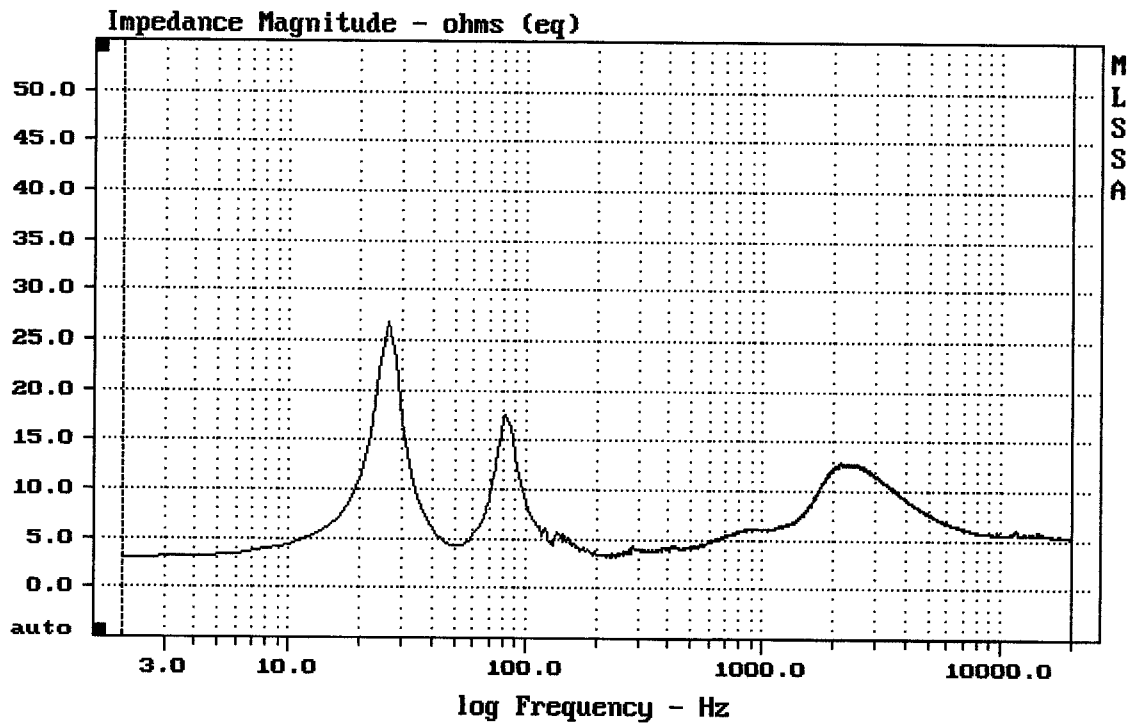
2x 12NDL76+DE700+ME90

MLSSA: Time Domain



mean: 102.02, rms: 102.70, std: 3.01, max: 110.22, min: 83.71

2x 12NDL76+DE700+ME90



mean: 6.531, rms: 6.833, std: 2.008, max: 26.66, min: 2.953

2x 12NDL76+DE700+ME90

MLSSA: Frequency Domain

