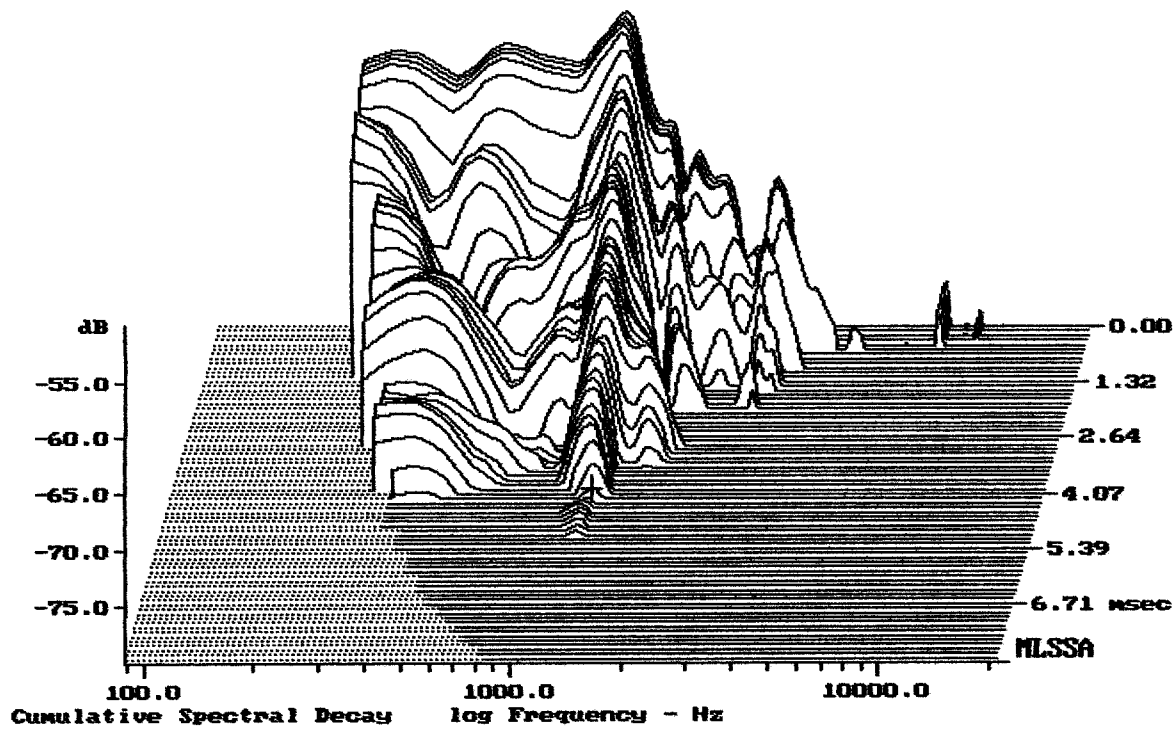


Level (100:1354 Hz) = 93.26 dB SPL/watt (8 ohms, @1.50 meters)

15TBW100

MLSSA: Frequency Domain



-79.84 dB, 1243 Hz (28), 4.180 msec (39)

DITO

MLSSA SPO 4.0D #960903-3057-3075

Measured Data

QC LIMITS

Line	Parameter	Value	Units
1	RMSE-free	0.81	Ohms
2	Fs	43.21	Hz
3	Re	5.41	Ohms[dc]
4	Res	141.83	Ohms
5	Qms	10.26	
6	Qes	0.39	
7	Qts	0.38	
8	L1	1.46	mH
9	L2	2.23	mH
10	R2	11.71	Ohms
11	RMSE-load	0.58	Ohms
12	Vas(Sd)	72.38	liters
13	Mms	192.60	grams
14	Cms	70	$\mu\text{M}/\text{Newton}$
15	B1	26.89	Tesla-M
16	SPLref(Sd)	93.6	dB[Re]
17	Rub-index	0.01	

Method: Mass-loaded (120.00 grams)

Area (Sd): 855.30 sq cm

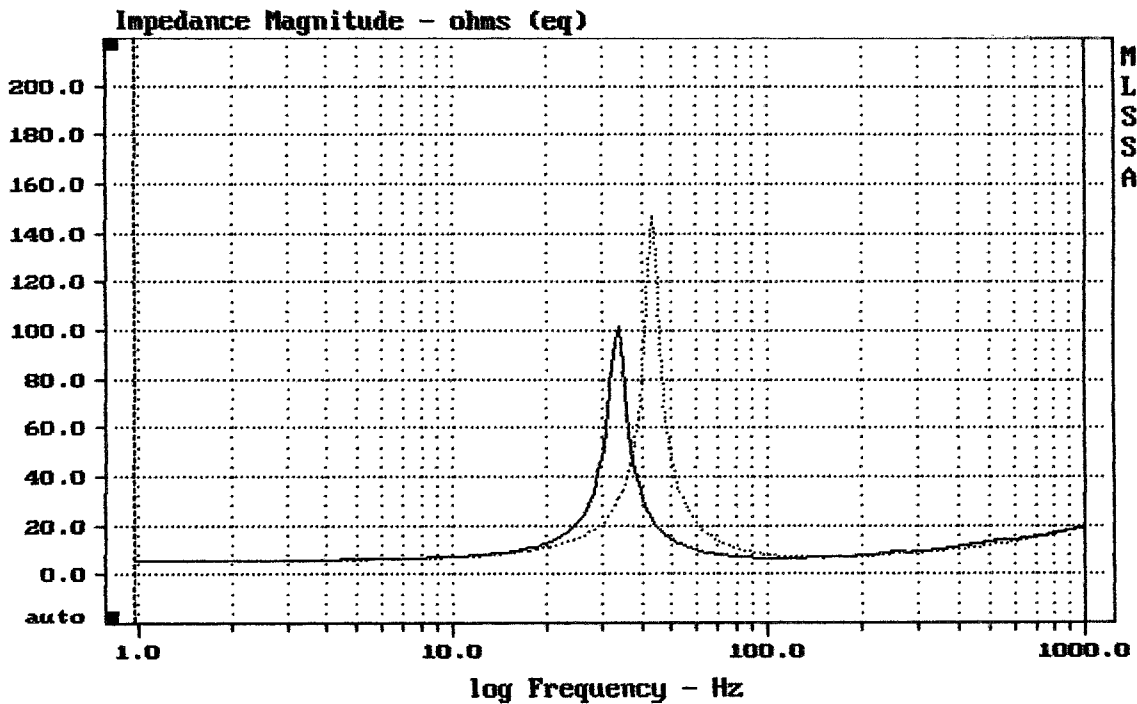
DCR mode: Measure (-0.19 ohms)

QC file: CLOSED

Analysis successful. Shift in Fs = -22.2% (-20% to -50% is recommended).

15TBW100

MLSSA: Parameters



mean: 14.07, rms: 17.48, std: 10.38, max: 147.1, min: 5.549

MLSSA: Frequency Domain