

MLSSA SPO 4.0D #960903-3057-3075

Measured Data

QC Limits

Line	Parameter	Value	Units
1	RMSE-free	0.70	Ohms
2	Fs	35.37	Hz
3	Re	5.10	Ohms[dc]
4	Res	84.35	Ohms
5	Qms	5.95	
6	Qes	0.36	
7	Qts	0.34	
8	L1	1.31	mH
9	L2	1.77	mH
10	R2	8.18	Ohms
11	RMSE-load	0.68	Ohms
12	Vas(Sd)	204.04	liters
13	Mms	198.93	grams
14	Cms	102	$\mu\text{M}/\text{Newton}$
15	B1	25.03	Tesla-M
16	SPLref(Sd)	95.8	dB[Re]
17	Rub-index	0.01	

Method: Mass-loaded (140.00 grams)

Area (Sd): 1194.59 sq cm

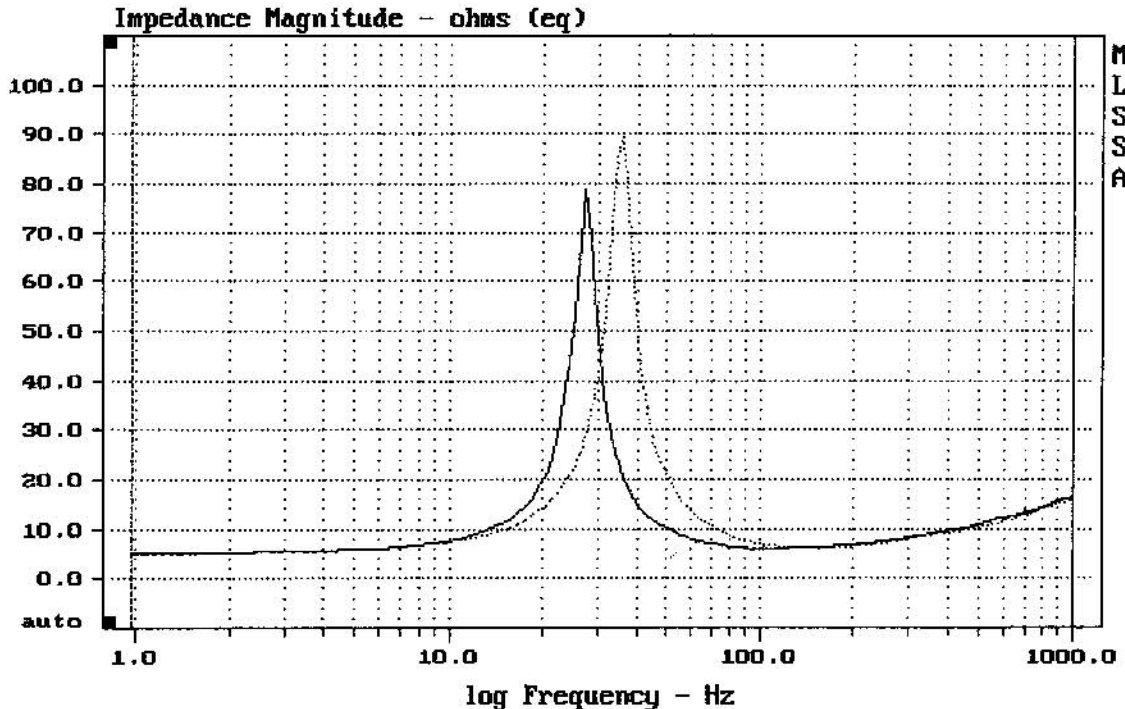
DCR mode: Measure (-0.06 ohms)

QC file: CLOSED

Analysis successful. Shift in Fs = -22.9% (-20% to -50% is recommended).

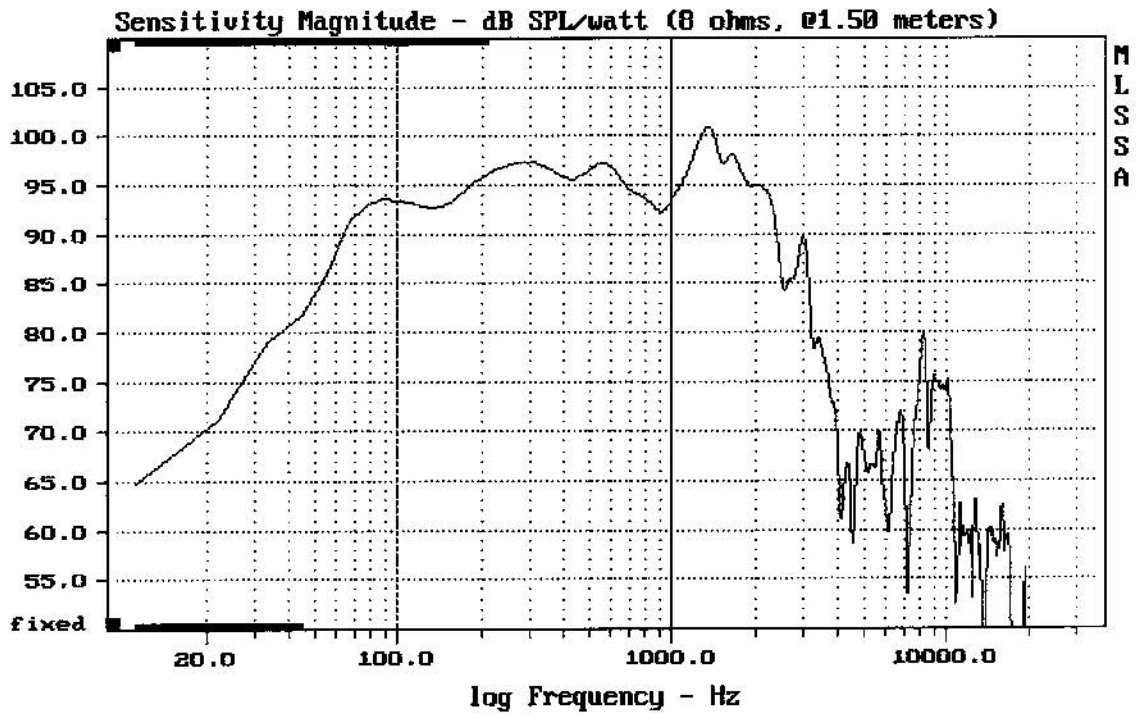
18NW100

MLSSA: Parameters



mean: 11.78, rms: 13.77, std: 7.126, max: 89.4, min: 5.175

MLSSA: Frequency Domain



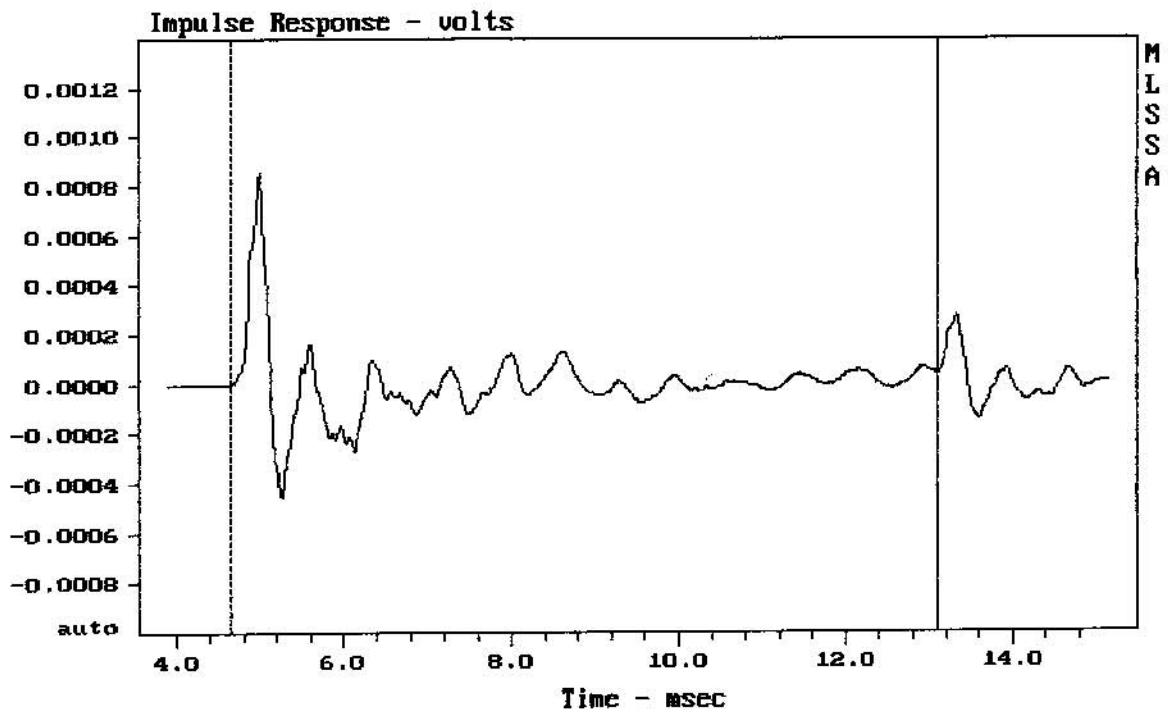

---

Level (100:999 Hz) = 95.42 dB SPL/watt (8 ohms, @1.50 meters)

---

18NW100

MLSSA: Frequency Domain




---

mean: -3.851e-007, rms: 0.0001373, std: 0.0001373, max: 0.0008525, min: -0.000

---

18NW100