

Sestava B&C Speakers 12PH32 + DE400TN + Megaton A9090m

Osazení:

- B&C Speakers 12PH32

<http://eshop.prodance.cz/detailpage.asp?DPG=82736>

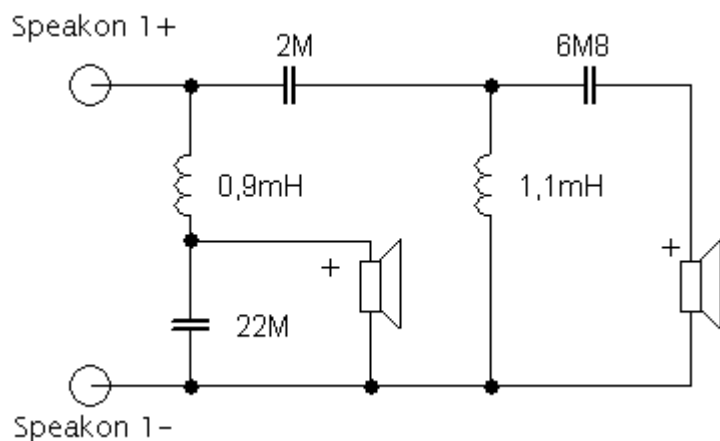
- B&C Speakers DE400TN

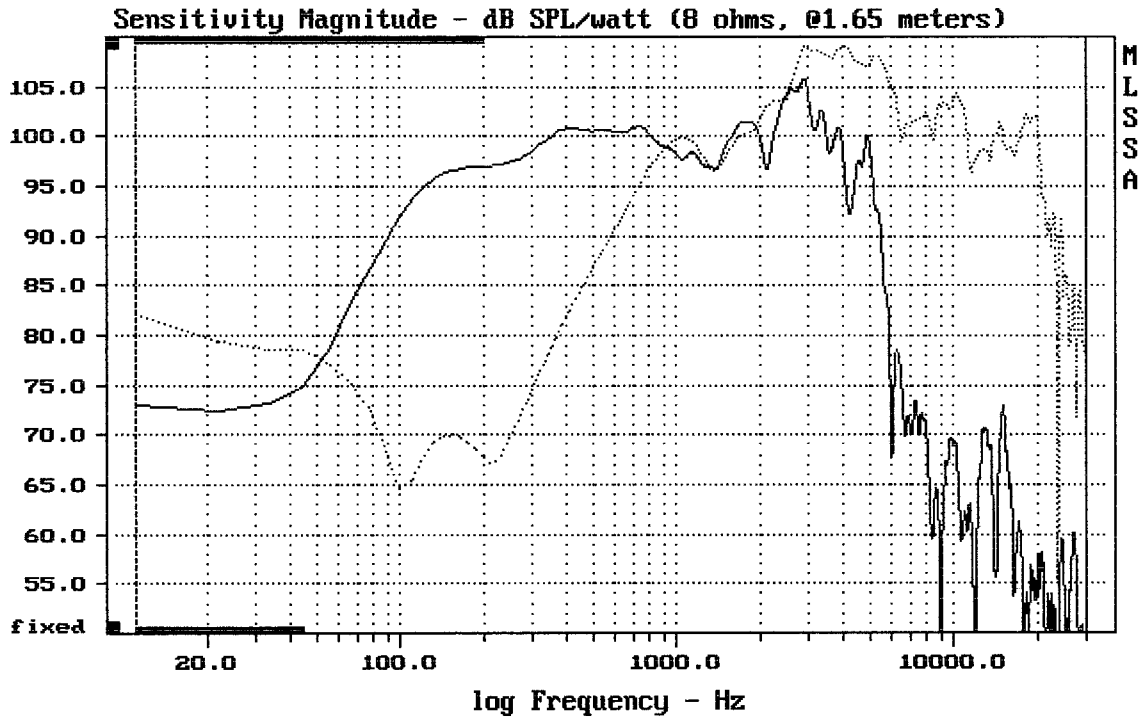
<http://eshop.prodance.cz/detailpage.asp?DPG=82307>

- Megaton A9090m

<http://eshop.prodance.cz/detailpage.asp?DPG=83911>

Schéma výhybky:



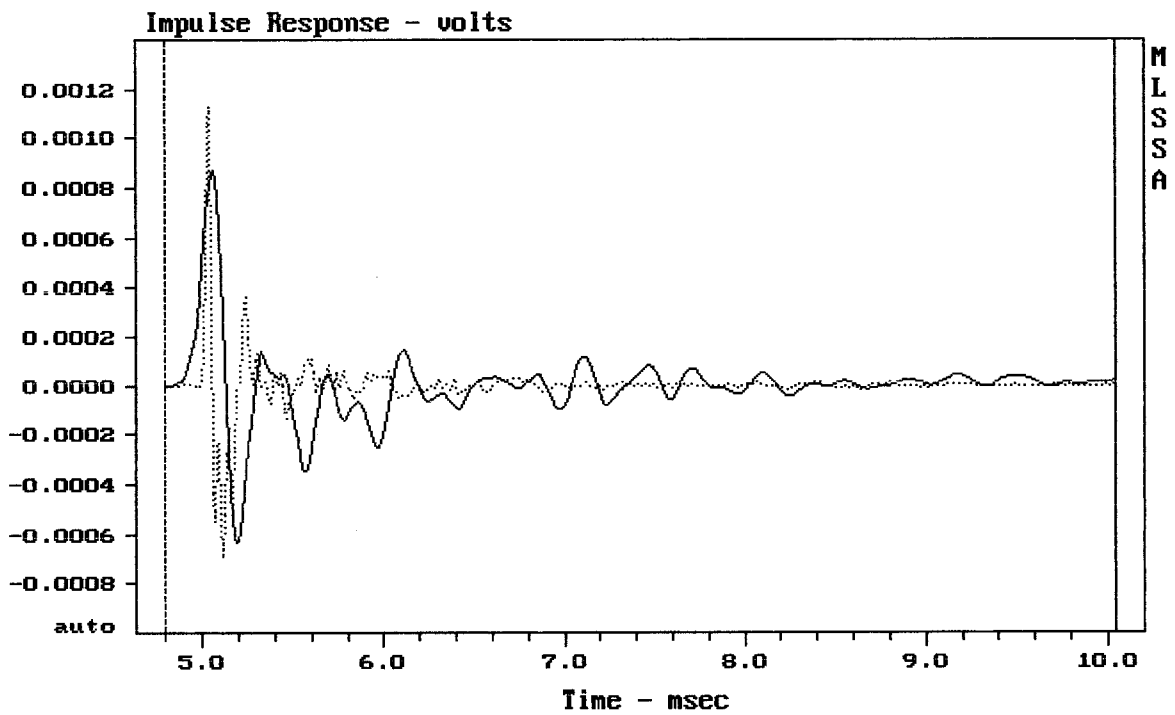


CURSOR: dy = 32.8049 x = 30007.1014 (2704)

12PH32 + DE400TN + A9090m

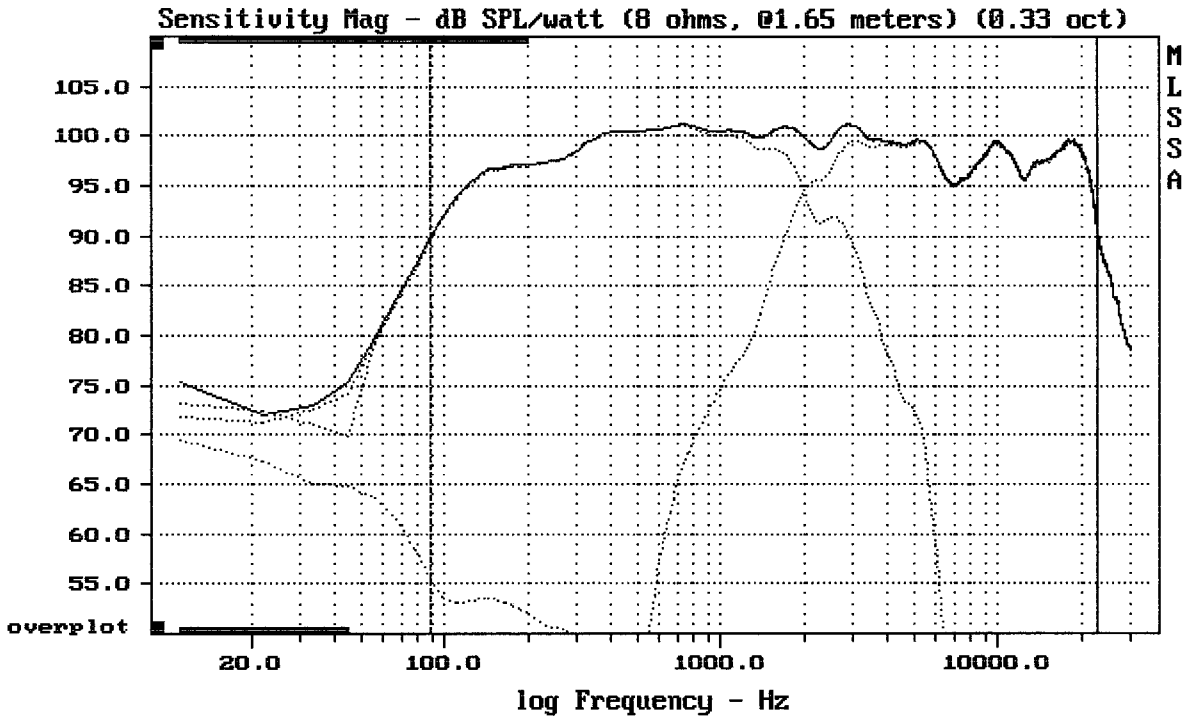
6-25-89 1:34 AM

MLSSA: Frequency Domain



CURSOR: dy = -1.79677e-005 x = 10.0430 (913)

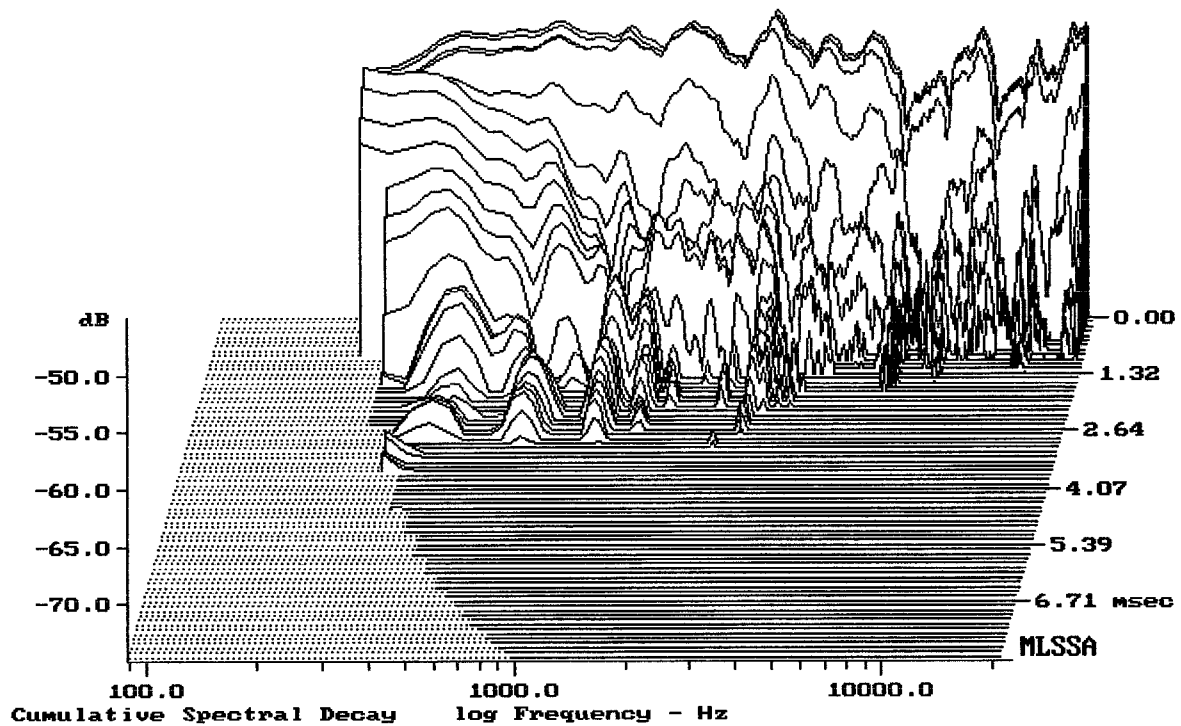
12PH32 + DE400TN + A9090m



Level (89:23005 Hz) = 98.98 dB SPL/watt (8 ohms, @1.65 meters) (0.33 oct)

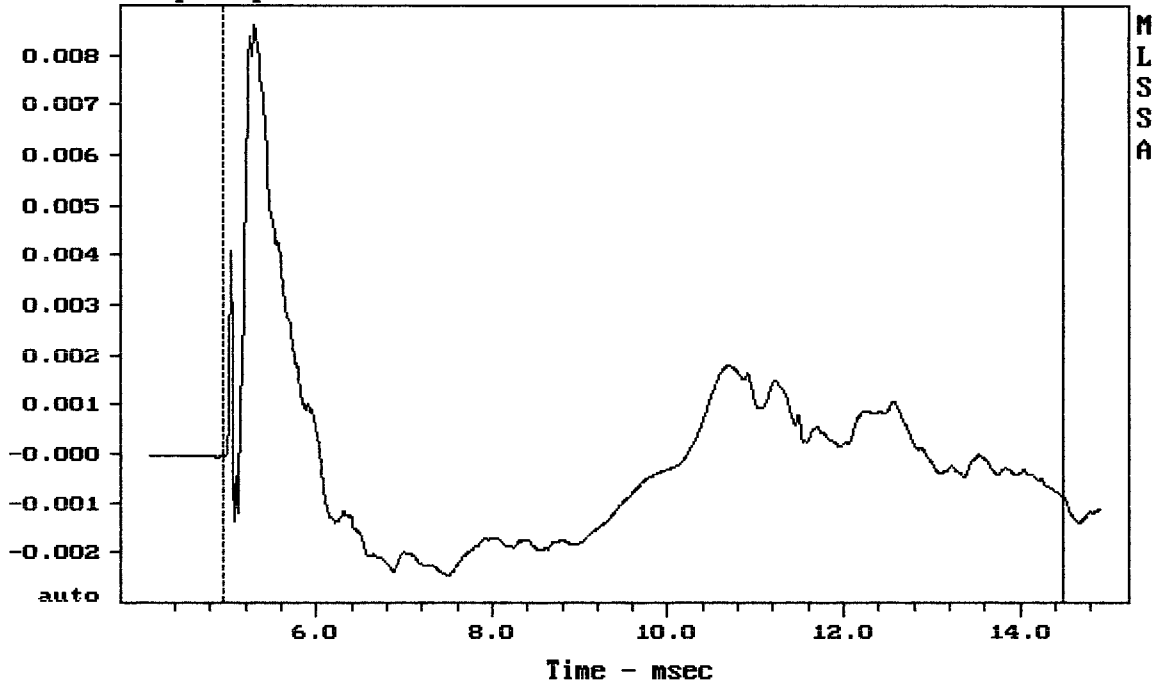
12PH32 + DE400TN + A9090m

MLSSA: Frequency Domain



-73.83 dB, 2752 Hz (62), 2.640 msec (25)

Step Response - volts

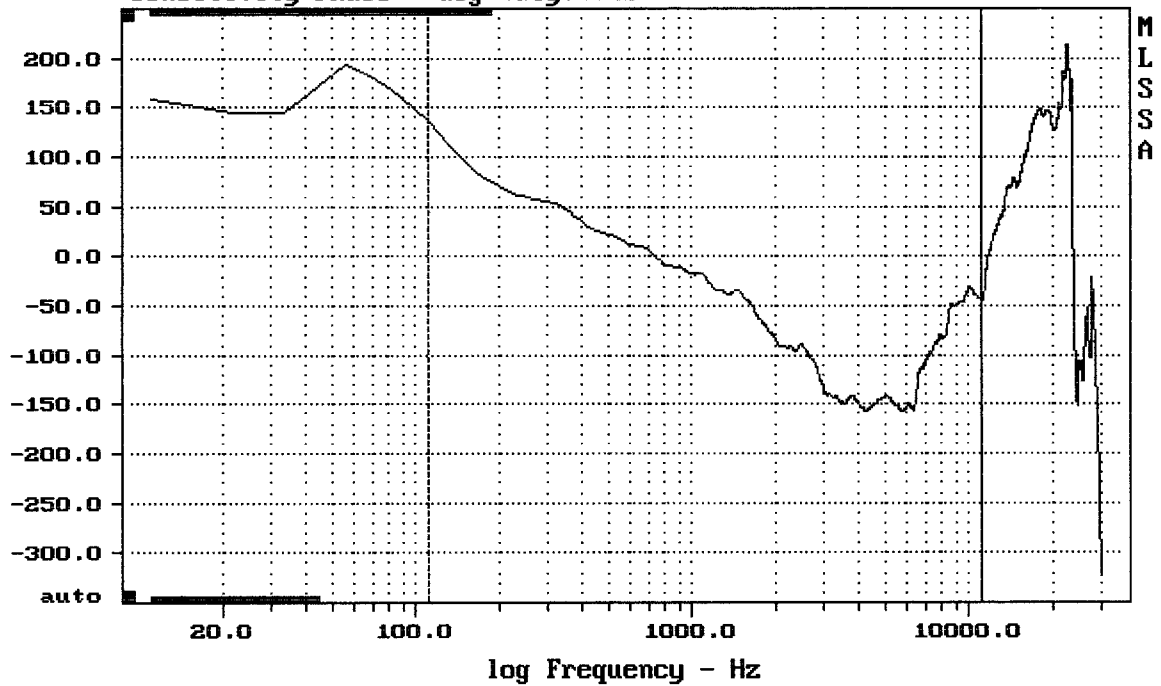


mean: -0.0001562, rms: 0.00191, std: 0.001903, max: 0.008628, min: -0.002454

12PH32 + DE400TN + A9090m

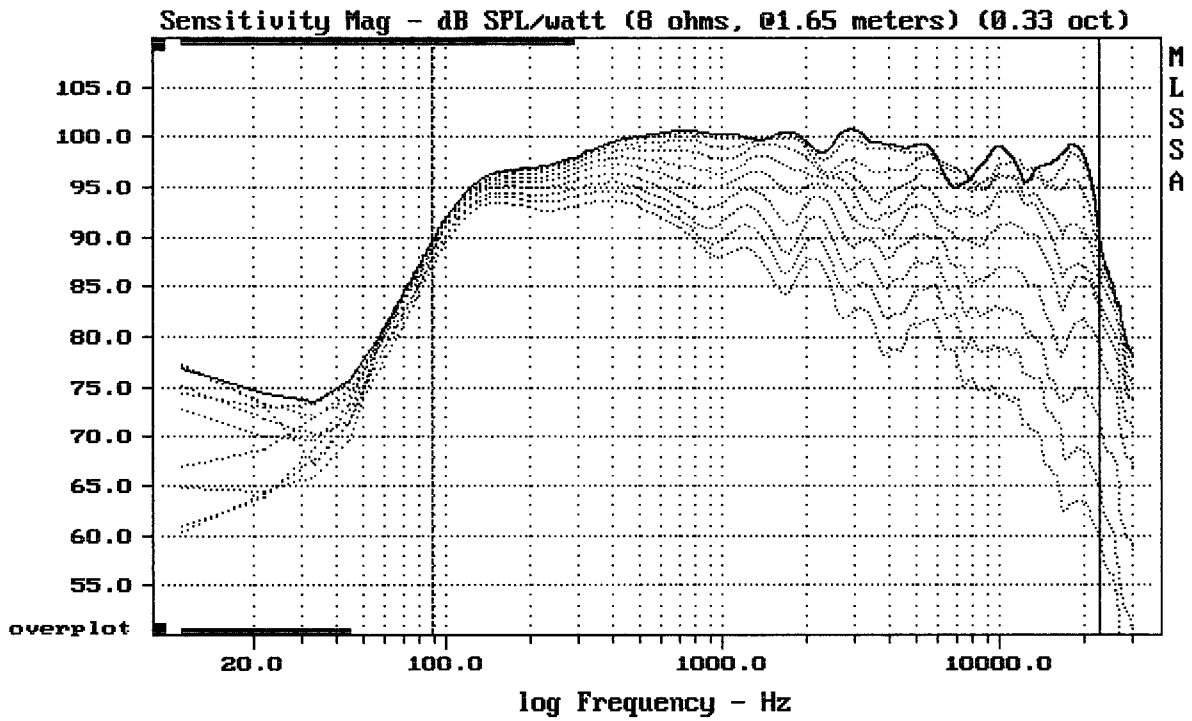
MLSSA: Time Domain

Sensitivity Phase - deg (dly:0.15 ms)



mean: -85.61, rms: 102.2, std: 55.81, max: 136.1, min: -158

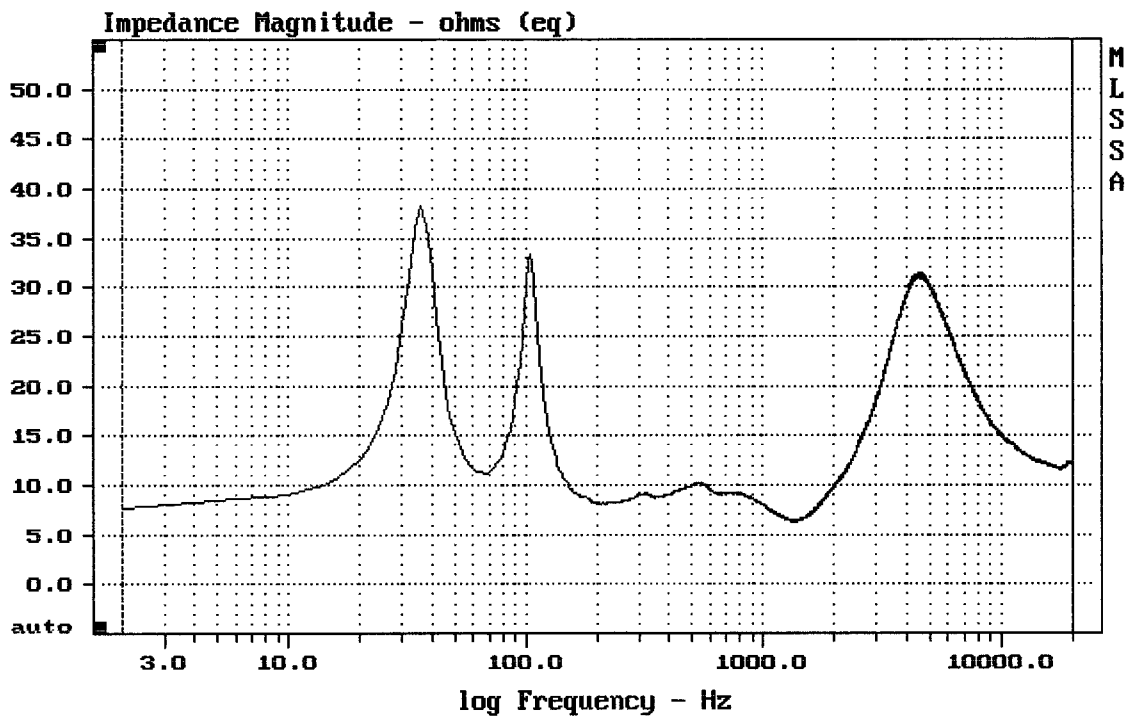
12PH32 + DE400TN + A9090m



Overlay Compare: dev= +23/-11, std= 8, avg= -25

12PH32 + DE400TN + A9090m

MLSSA: Frequency Domain



mean: 15.88, rms: 17.04, std: 6.185, max: 38.24, min: 6.255

12PH32 + DE400TN + A9090m