

Sestava: Eminence BETA 10 + Eminence DT150 16/ohm + RH10/2/200/P

Osazení:

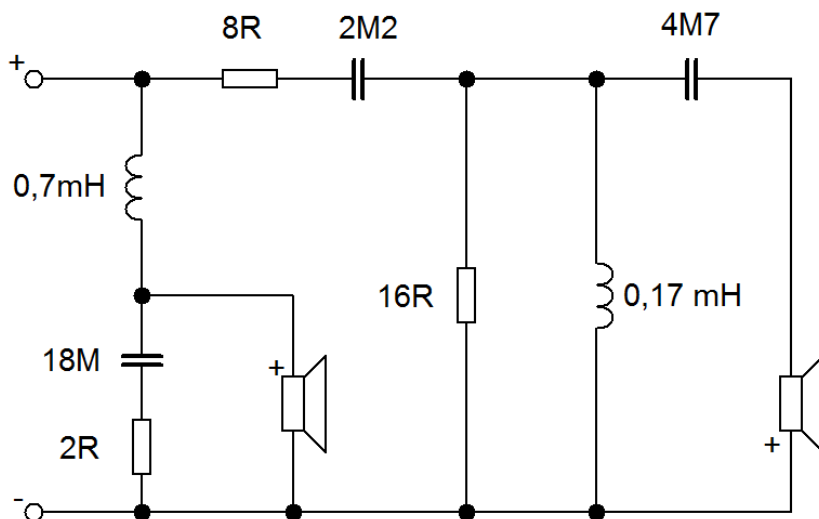
- Eminence BETA 10

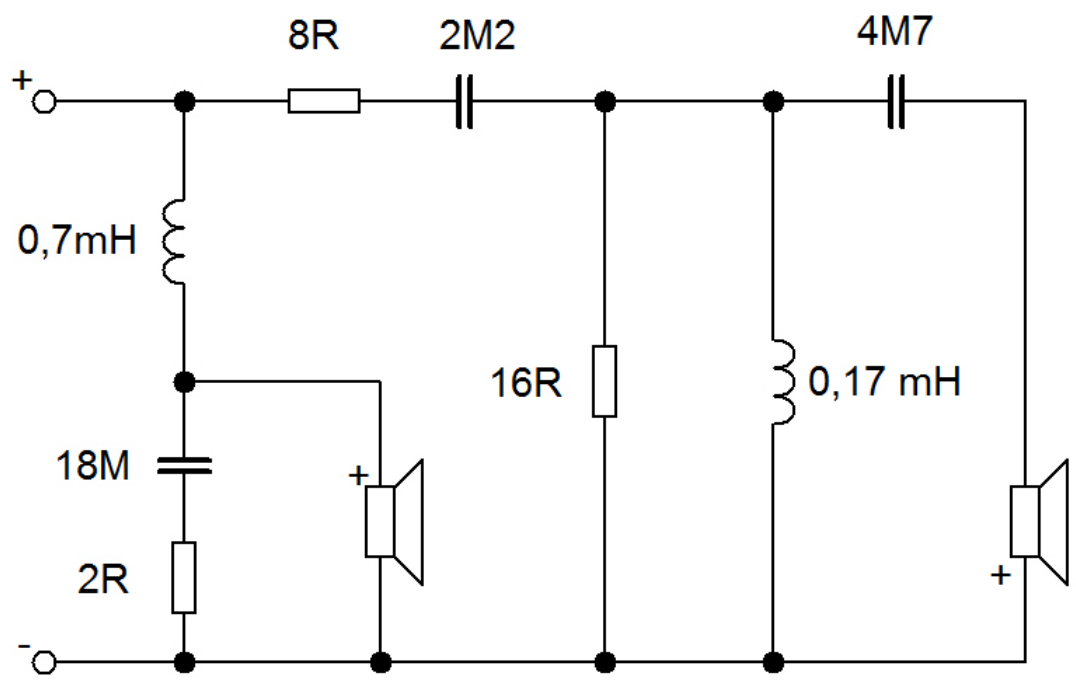
<http://eshop.prodance.cz/beta10-8-ohm/d-84338/>

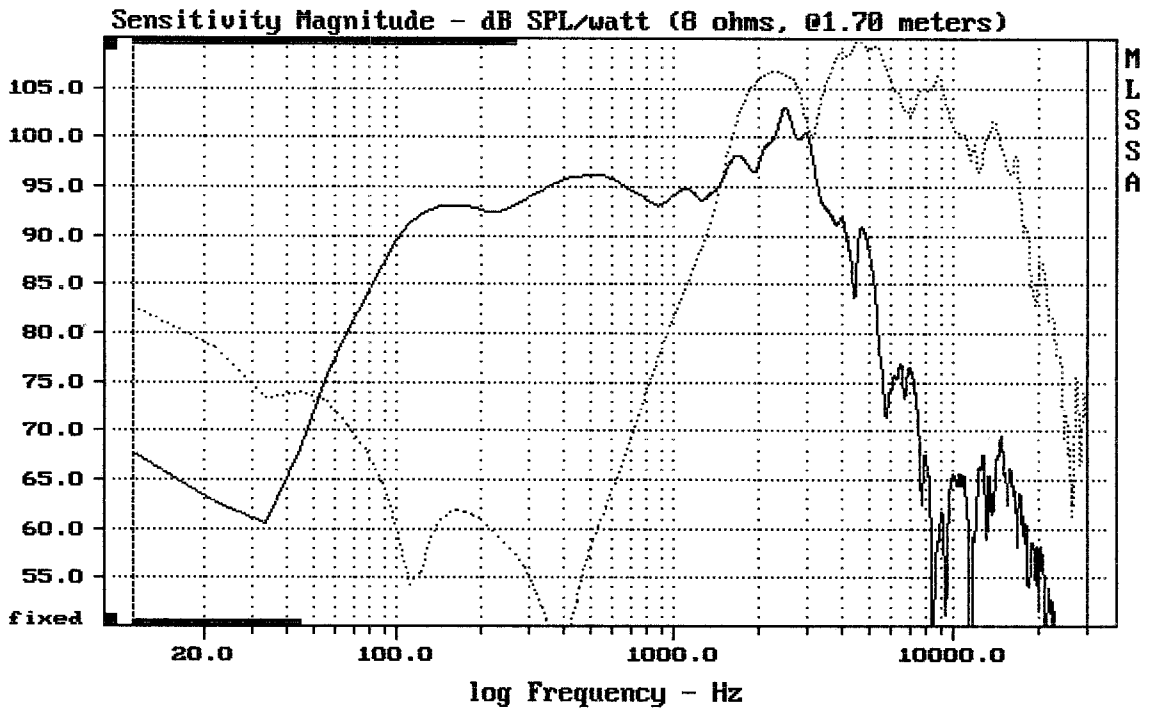
- Eminence DT150 OEM 16/ohm

<http://eshop.prodance.cz/dt150-oem-16-ohm/d-93807/>

Schéma výhybky:



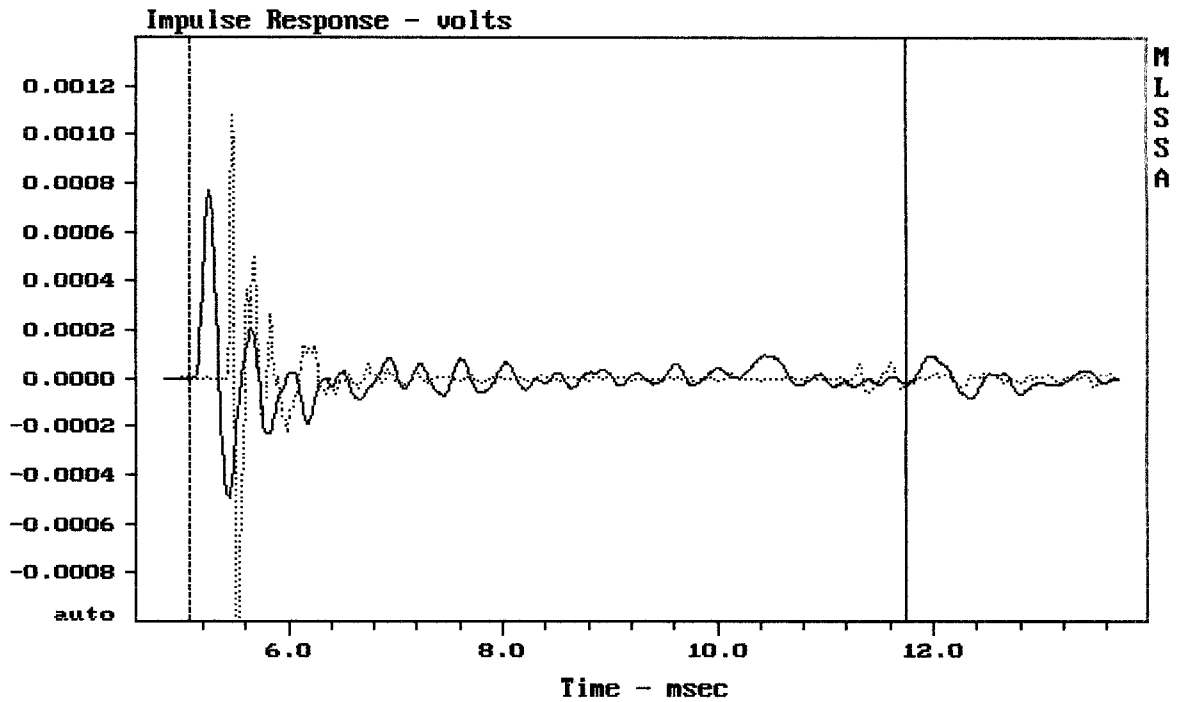




CURSOR: dy = 34.8293 x = 30007.1014 (2704)

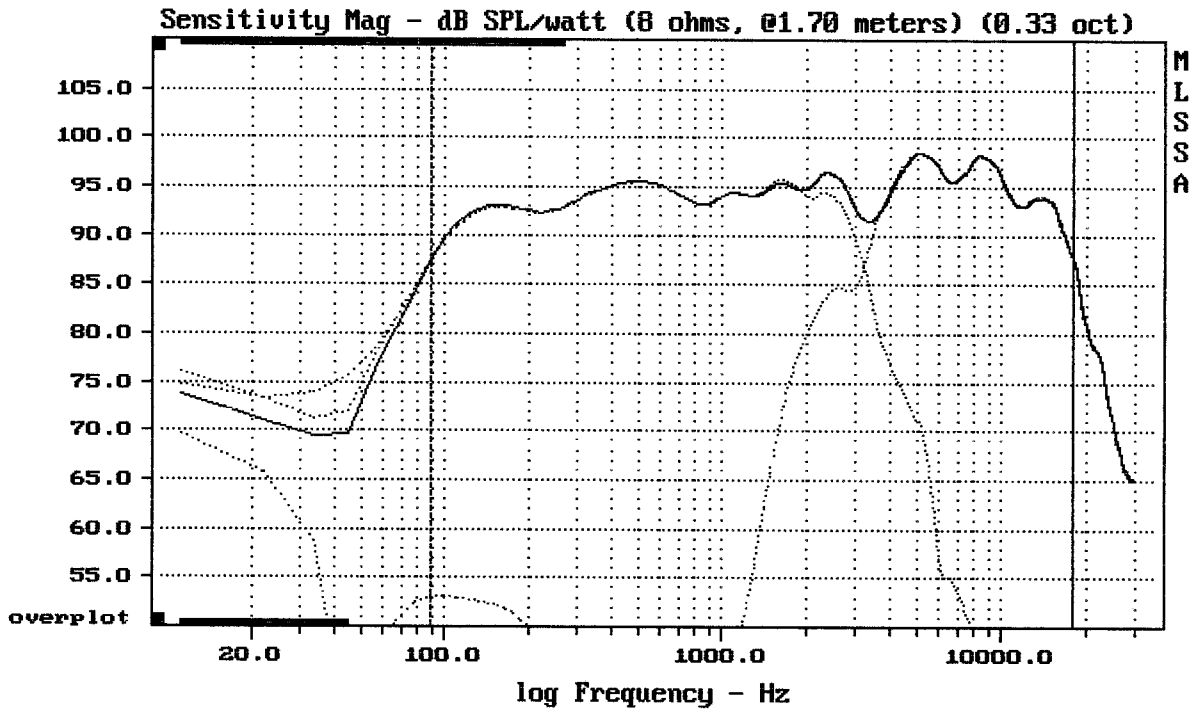
BETA10 + DT150/16 + RH10/2/200/P

MLSSA: Frequency Domain



CURSOR: dy = 1.81194e-005 x = 11.7480 (1068)

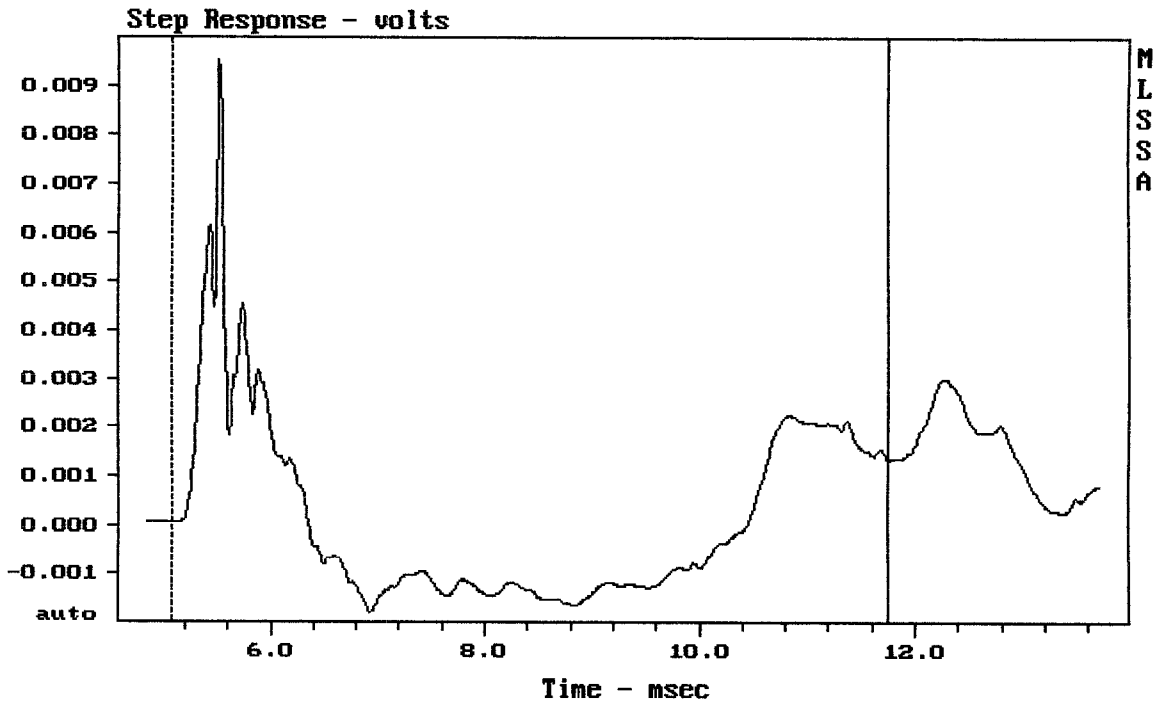
BETA10 + DT150/16 + RH10/2/200/P



Level (89:18000 Hz) = 94.62 dB SPL/watt (8 ohms, @1.70 meters) (0.33 oct)

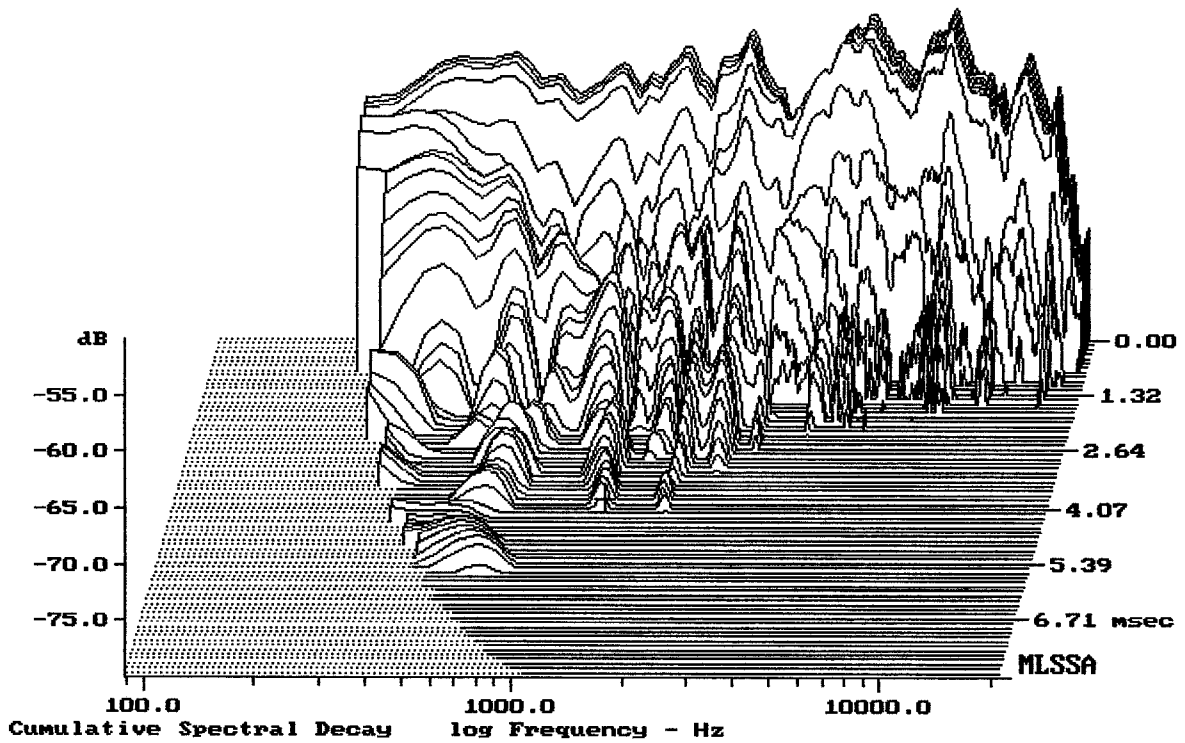
BETA10 + DT150/16 + RH10/2/200/P

MLSSA: Frequency Domain



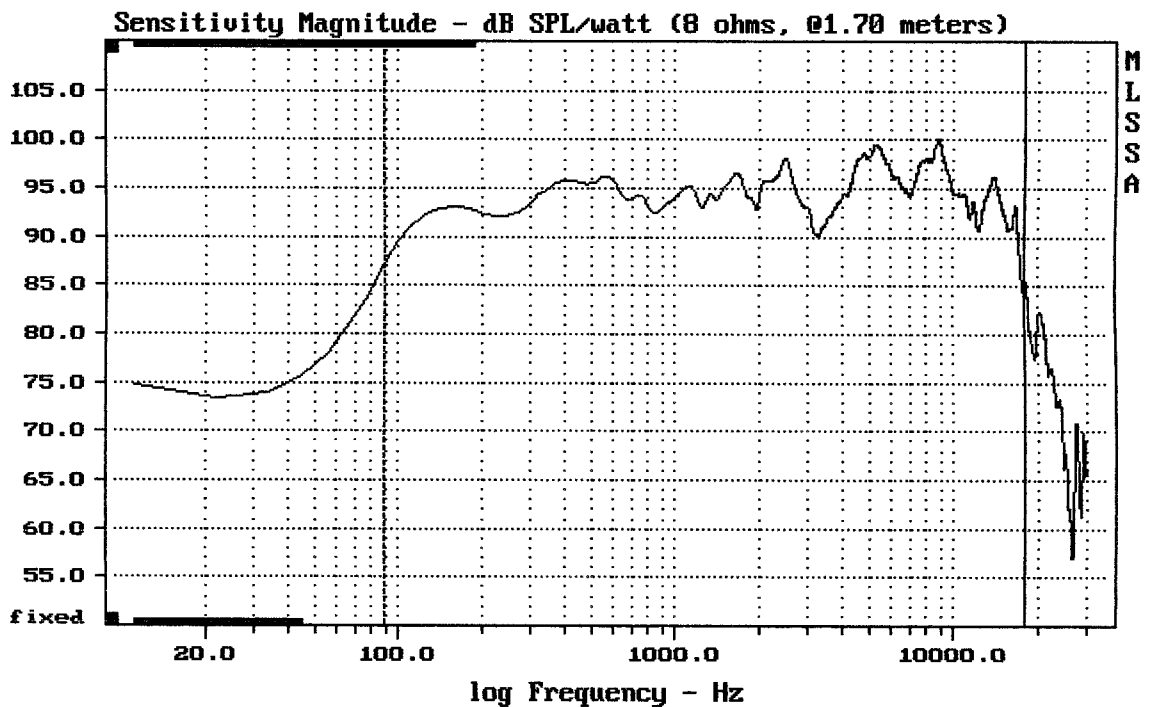
mean: 0.000133, rms: 0.001893, std: 0.001889, max: 0.009543, min: -0.00181

BETA10 + DT150/16 + RH10/2/200/P



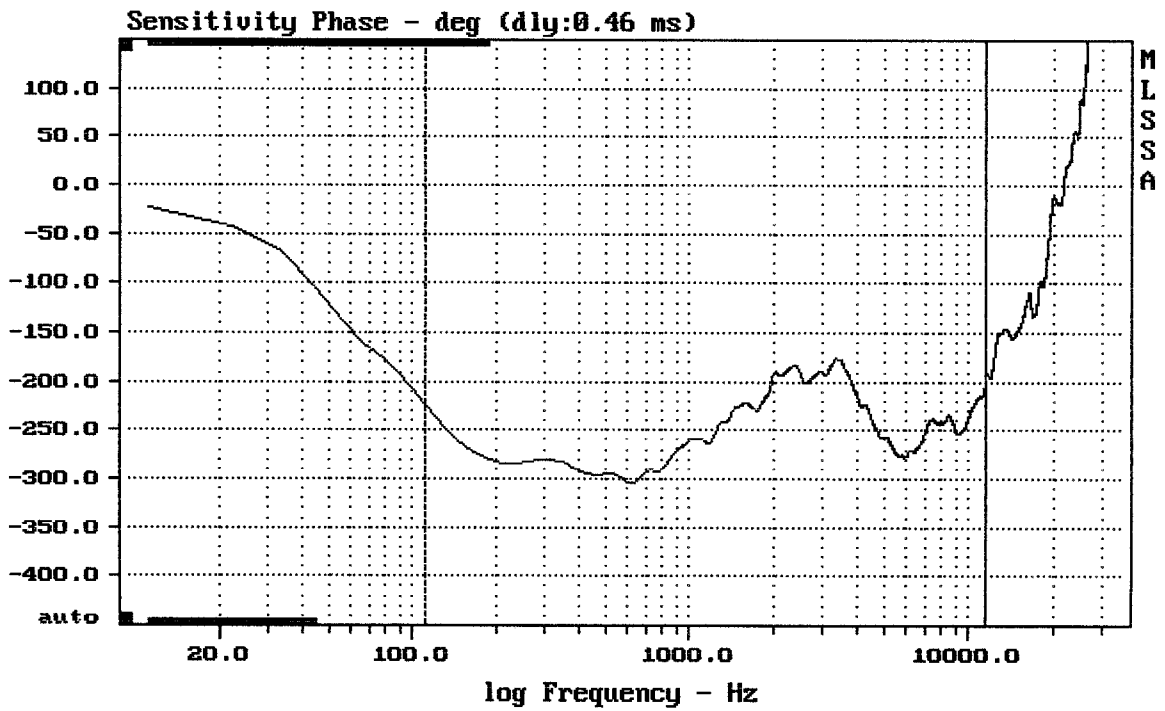
-79.19 dB, 1332 Hz (30), 4.070 msec (38)

DTTO



mean: 94.81, rms: 95.25, std: 2.44, max: 99.99, min: 84.45

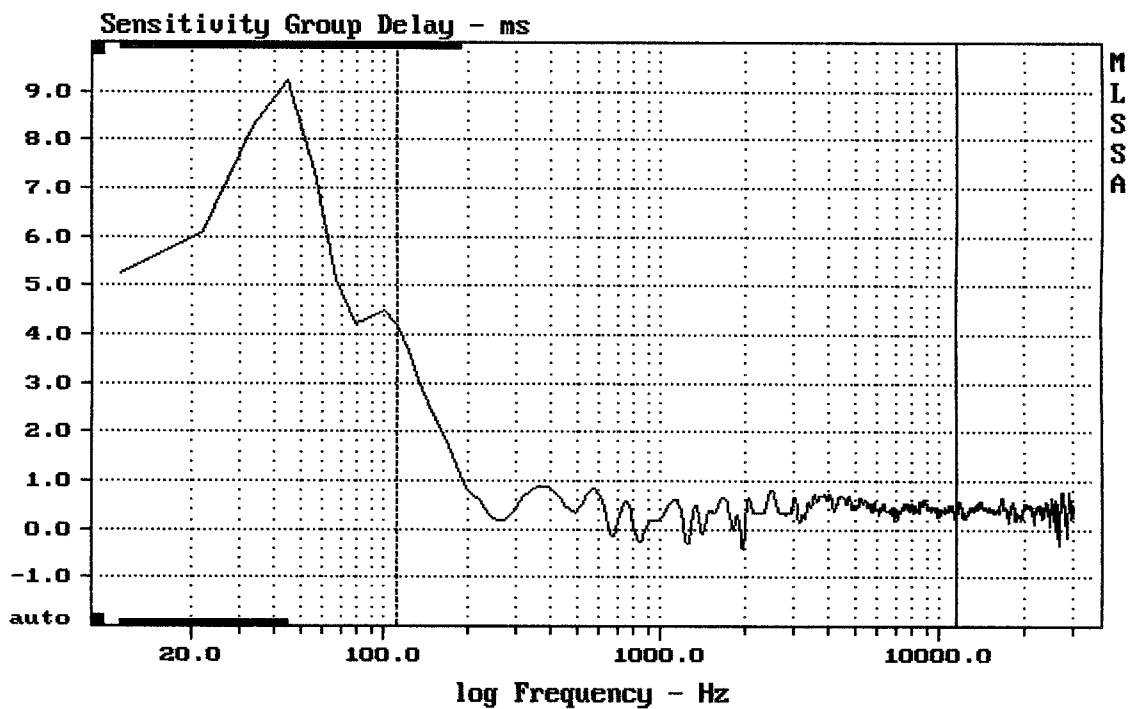
BETA10 + DT150/16 + RH10/2/200/P



mean: -237.7, rms: 239.5, std: 29.64, max: -175.6, min: -304.3

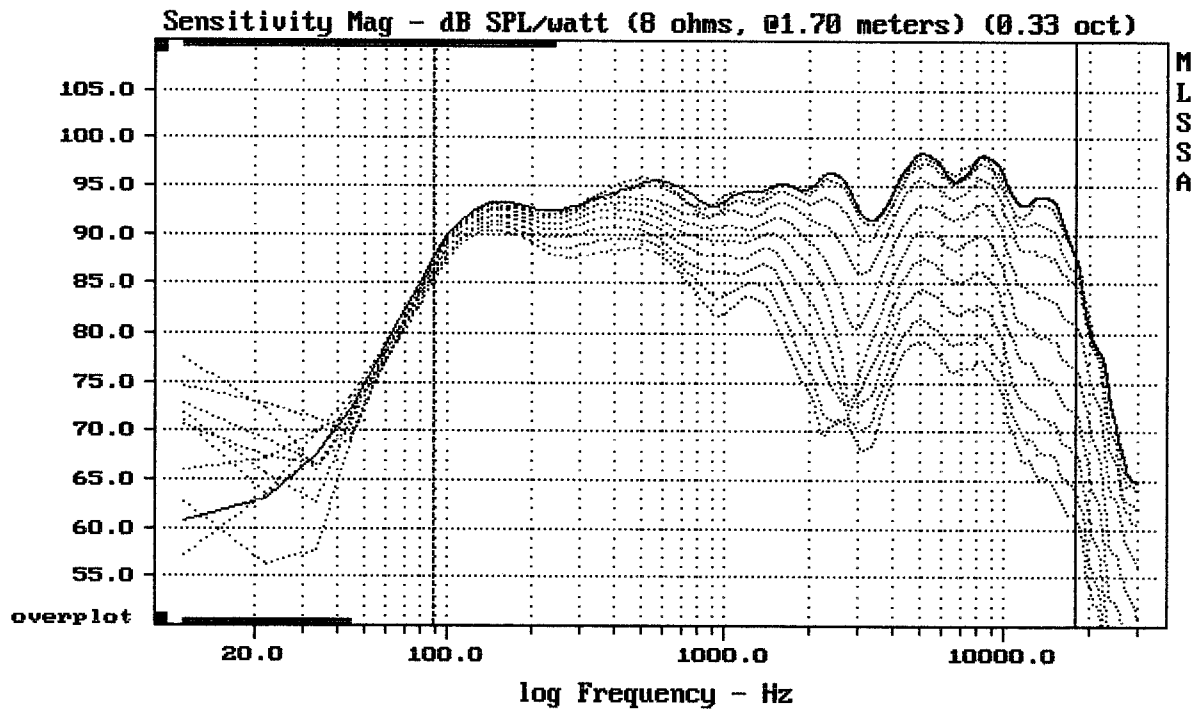
BETA10 + DT150/16 + RH10/2/200/P

MLSSA: Frequency Domain



mean: 0.4541, rms: 0.5267, std: 0.267, max: 4.208, min: -0.4193

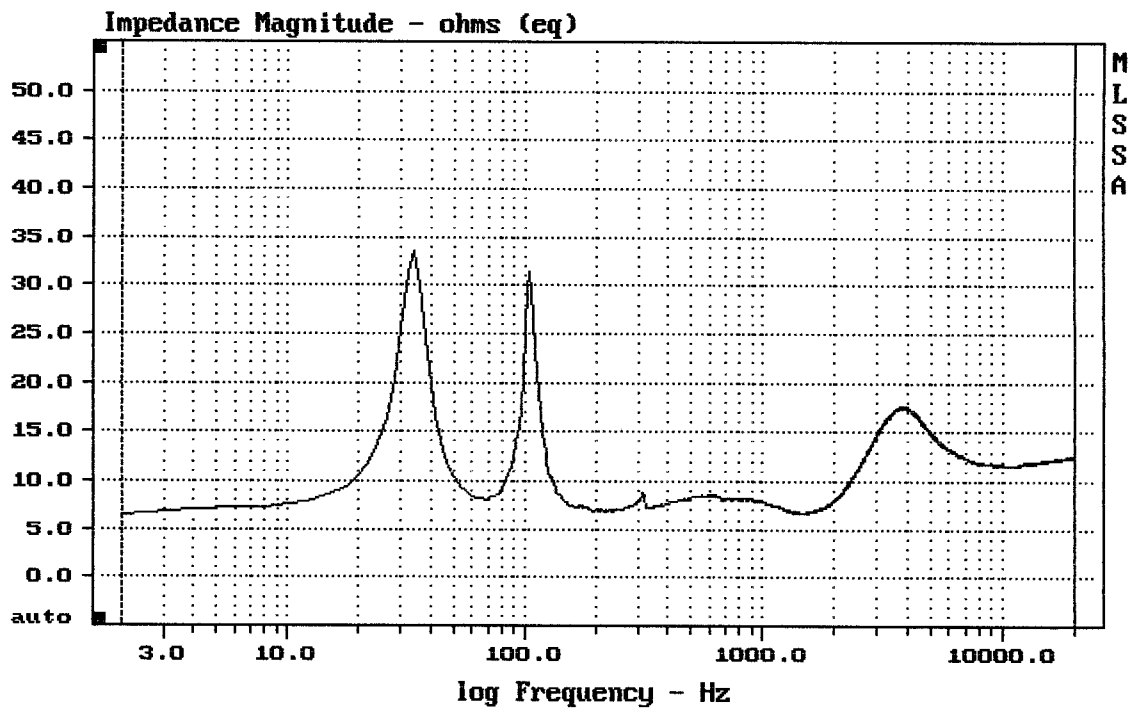
BETA10 + DT150/16 + RH10/2/200/P



Overlay Compare: dev= +20/-6.6, std= 5.6, avg= -23

BETA10 + DT150/16 + RH10/2/200/P

MLSSA: Frequency Domain



mean: 12.14, rms: 12.34, std: 2.206, max: 33.57, min: 6.543

BETA10 + DT150/16 + RH10/2/200/P