

## Sestava Fane Colossus 12MB + BMS BMS4555 + Megaton B8575

### Osazení:

- Fane Colossus 12MB 8/Ohm

<http://eshop.prodance.cz/DetailPage.asp?DPG=85020>

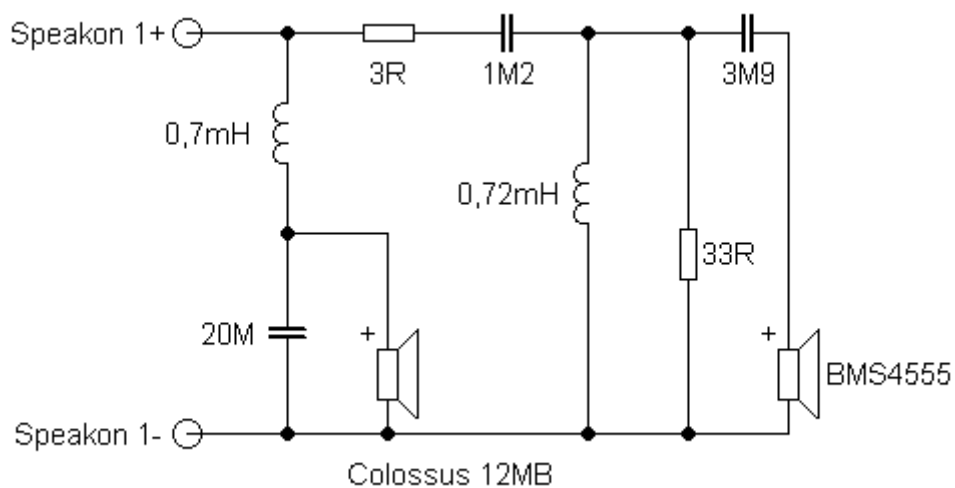
- BMS BMS4555 8/Ohm

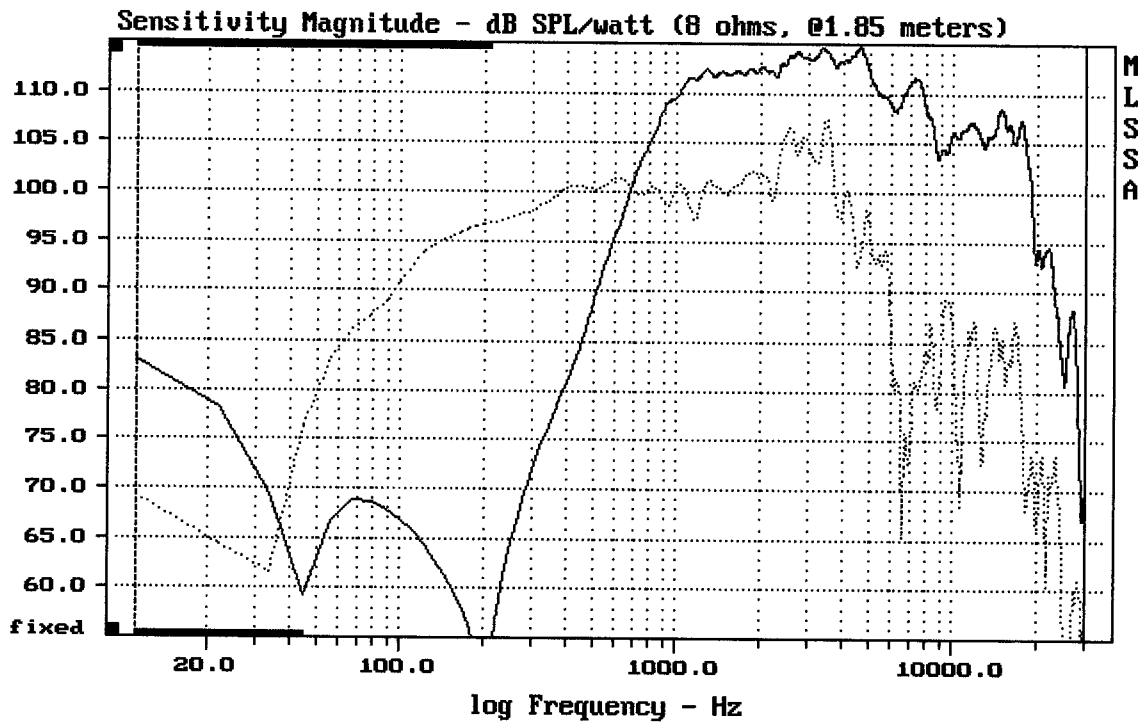
<http://eshop.prodance.cz/DetailPage.asp?DPG=87228>

- Megaton B8575

<http://eshop.prodance.cz/DetailPage.asp?DPG=84261>

### Schéma výhybky:

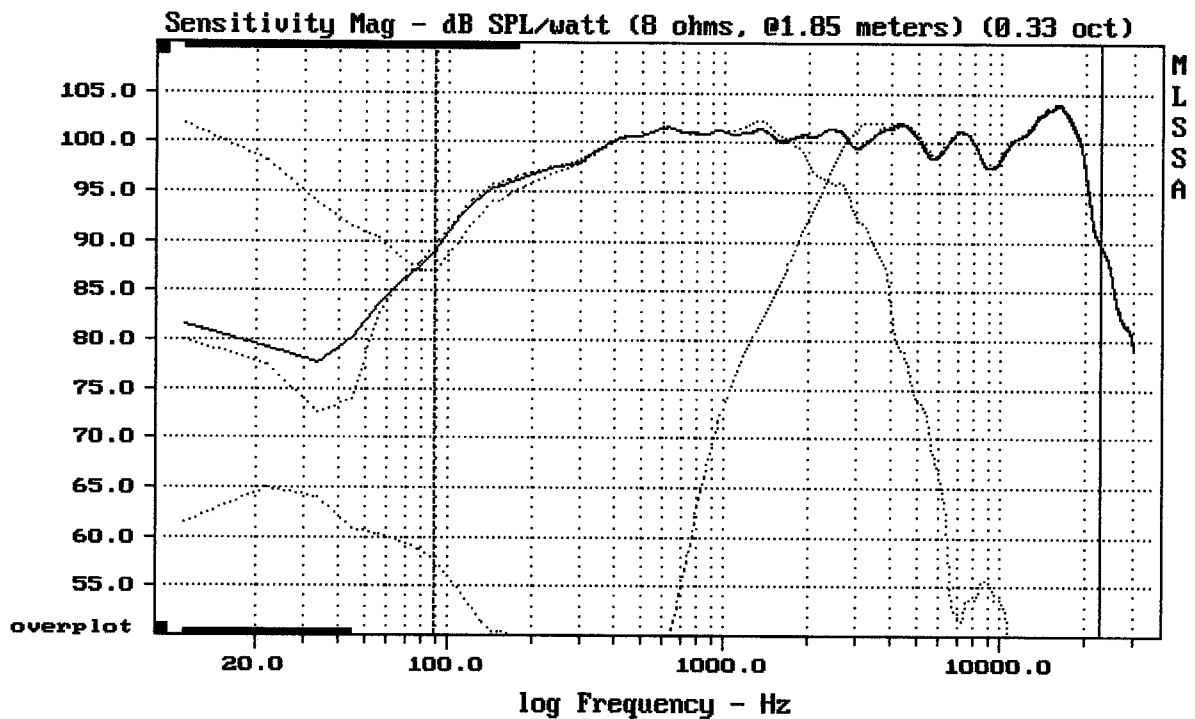




CURSOR:  $dy = -12.5229$   $x = 30007.1014$  (2704)

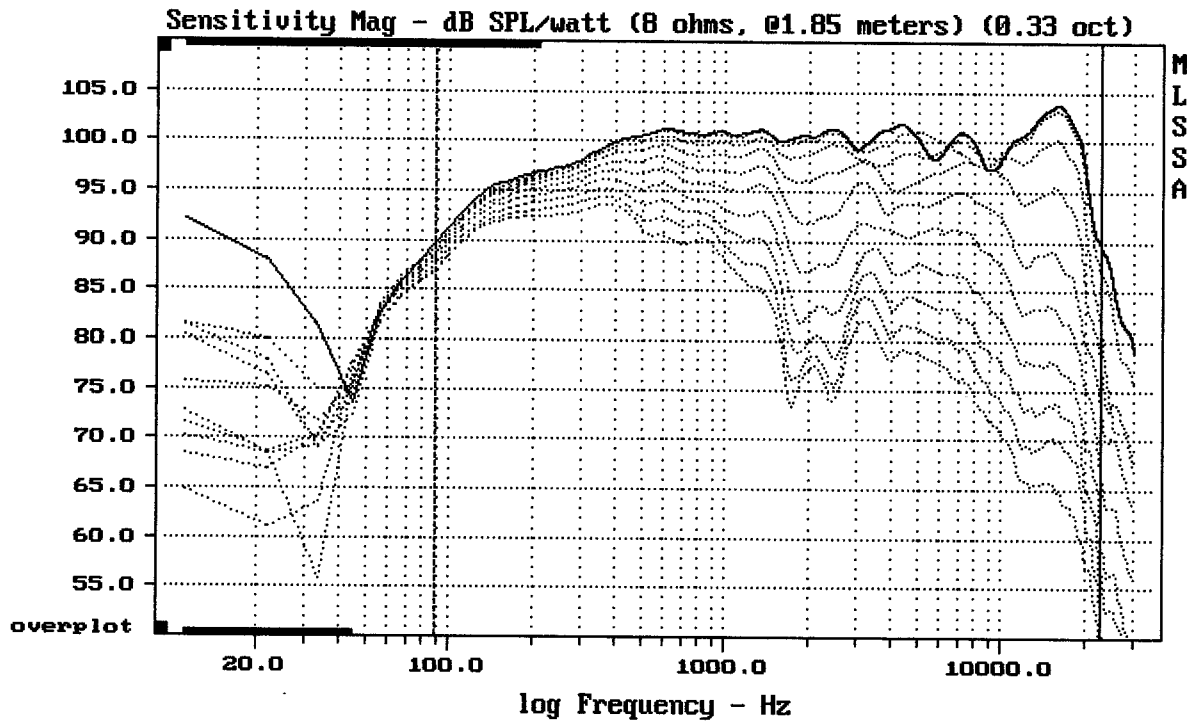
COL12MB + BMS4555 + B8575

MLSSA: Frequency Domain



Level (89:23005 Hz) = 100.00 dB SPL/watt (8 ohms, @1.85 meters) (0.33 oct)

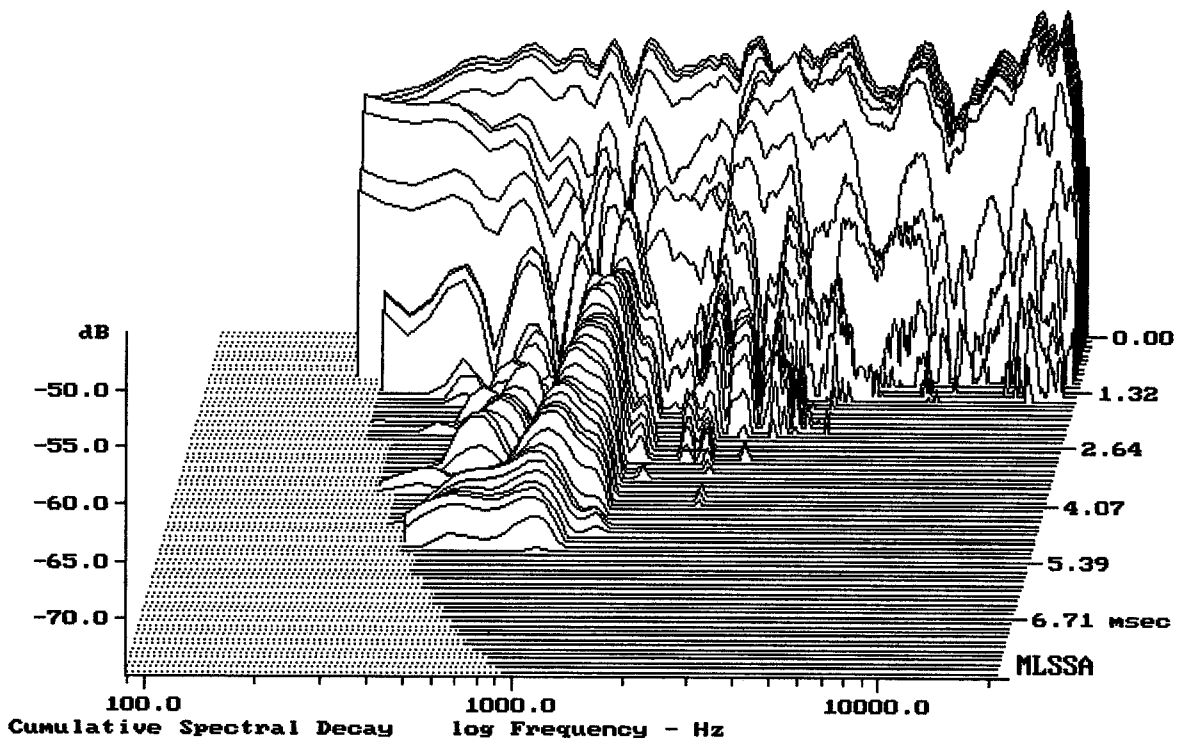
COL12MB + BMS4555 + B8575



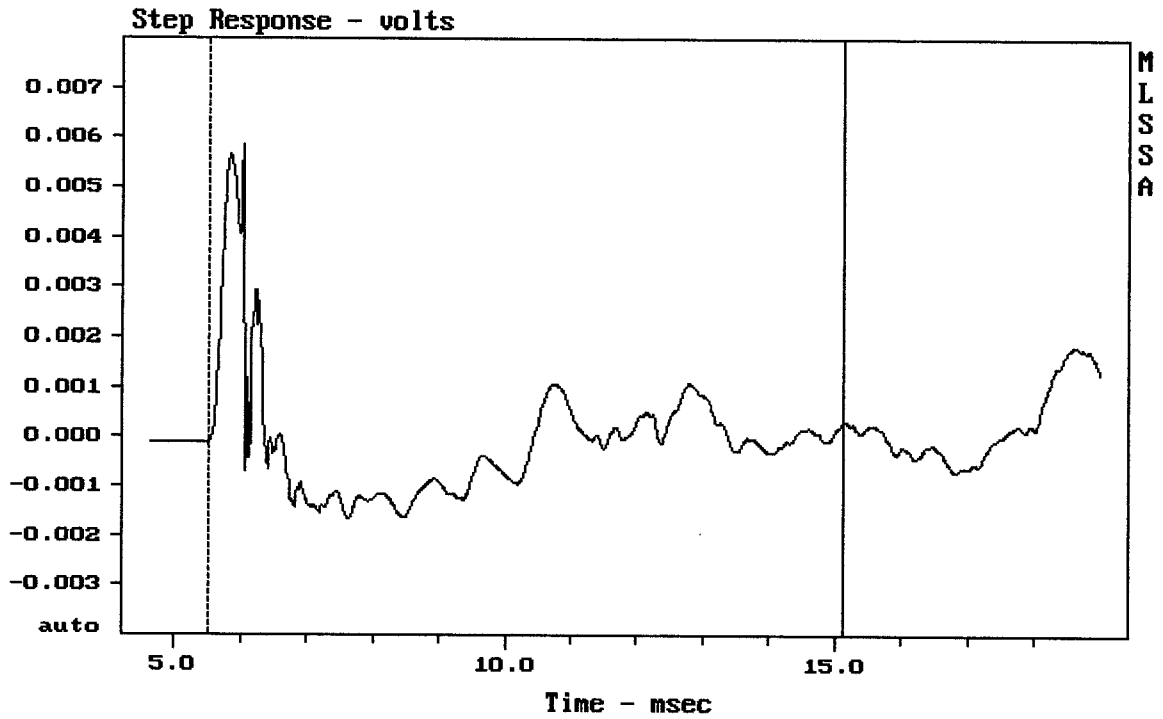
Overlay Compare: dev= +28/-11, std= 8.8, avg= -30

COL12MB + BMS4555 + B8575

MLSSA: Frequency Domain



-74.63 dB, 2131 Hz (48), 2.860 msec (27)



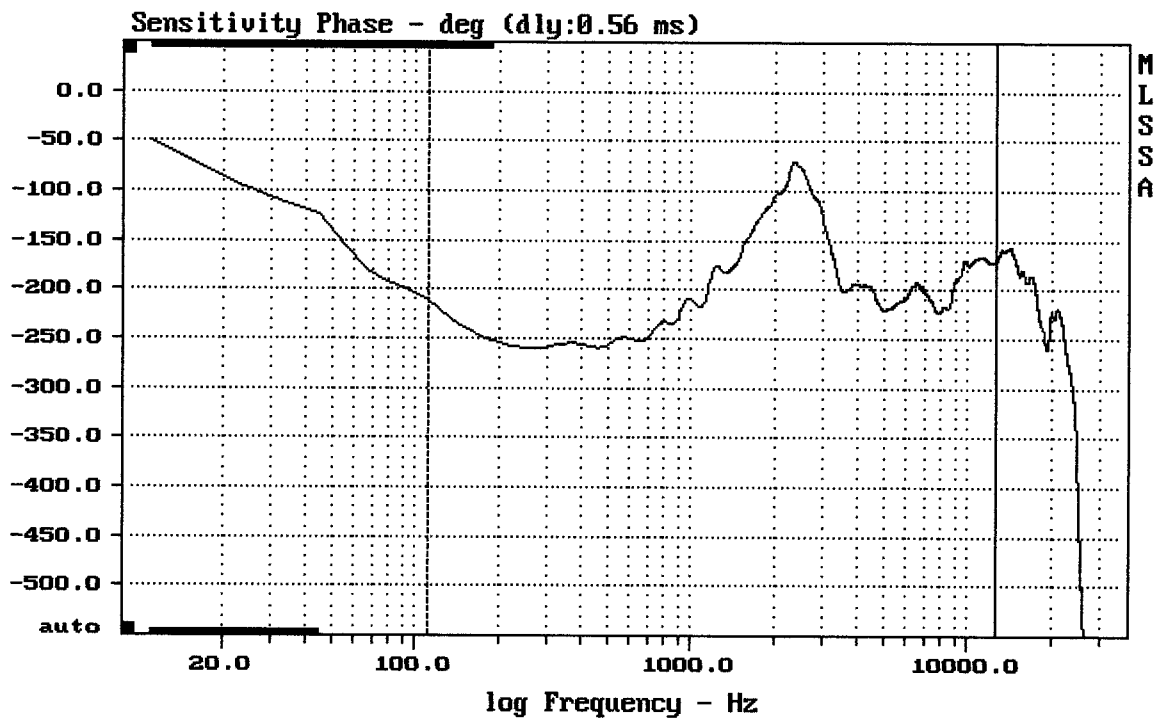

---

mean:  $-6.875e-005$ , rms: 0.001274, std: 0.001272, max: 0.005868, min: -0.00167

---

COL12MB + BMS4555 + B8575

MLSSA: Time Domain

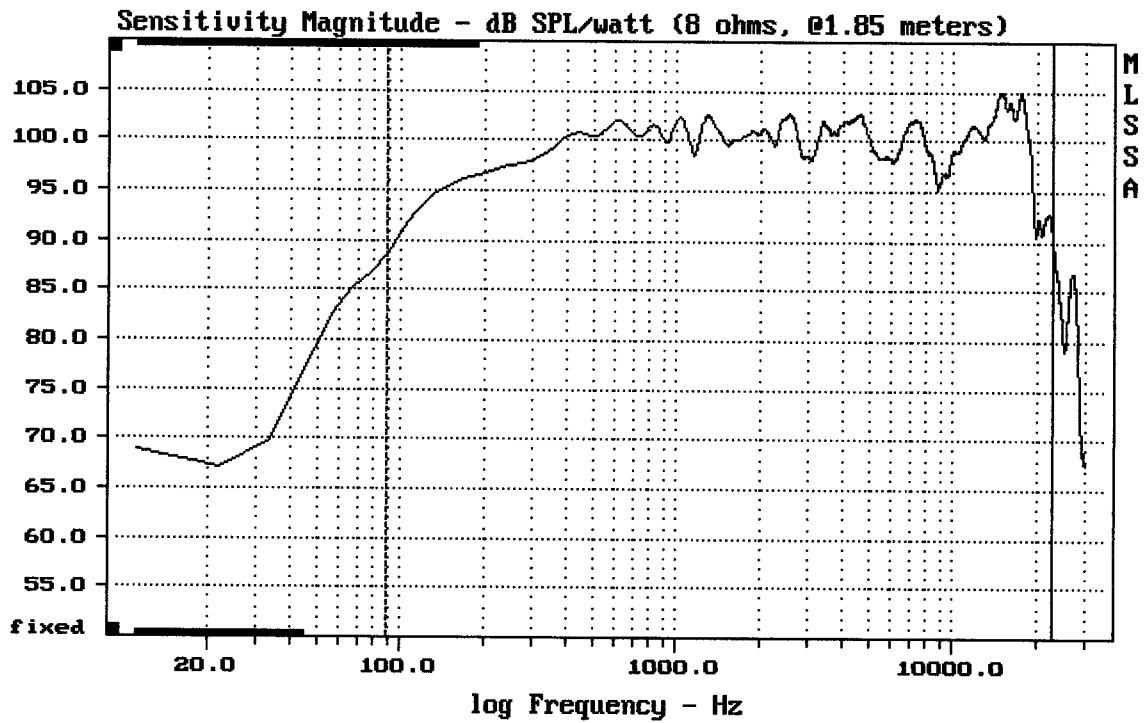



---

mean: -185.5, rms: 189.4, std: 38.05, max: -70.03, min: -259.6

---

COL12MB + BMS4555 + B8575



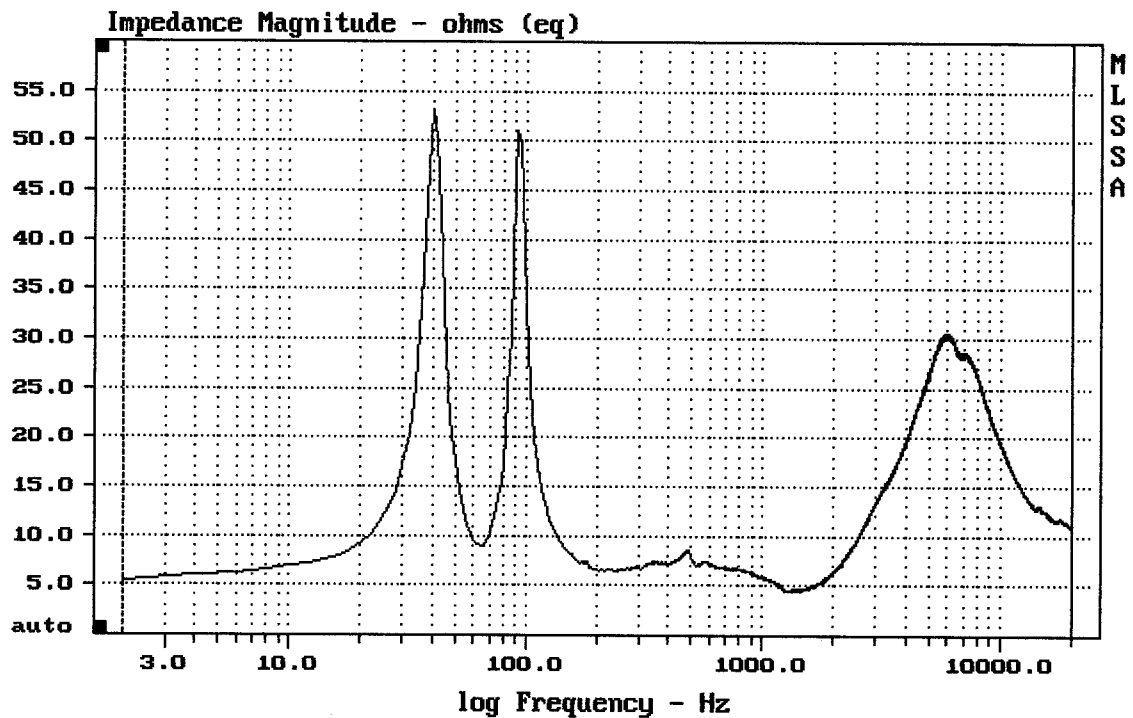

---

mean: 100.23, rms: 100.78, std: 2.70, max: 104.95, min: 88.53

---

COL12MB + BMS4555 + B8575

MLSSA: Frequency Domain




---

mean: 16.35, rms: 17.83, std: 7.097, max: 53.23, min: 4.389

---

COL12MB + BMS4555 + B8575