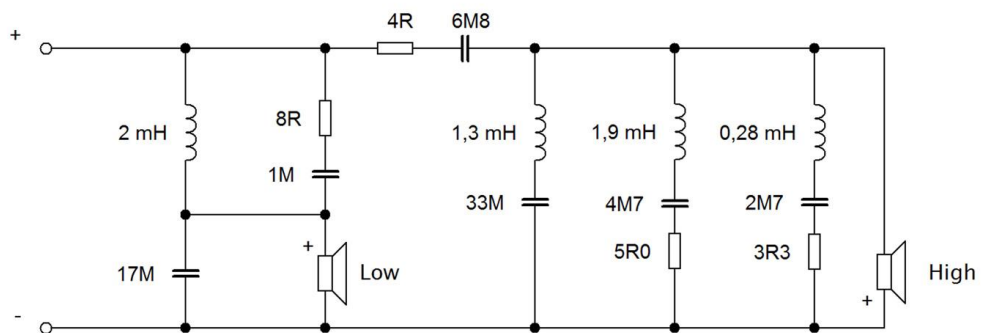


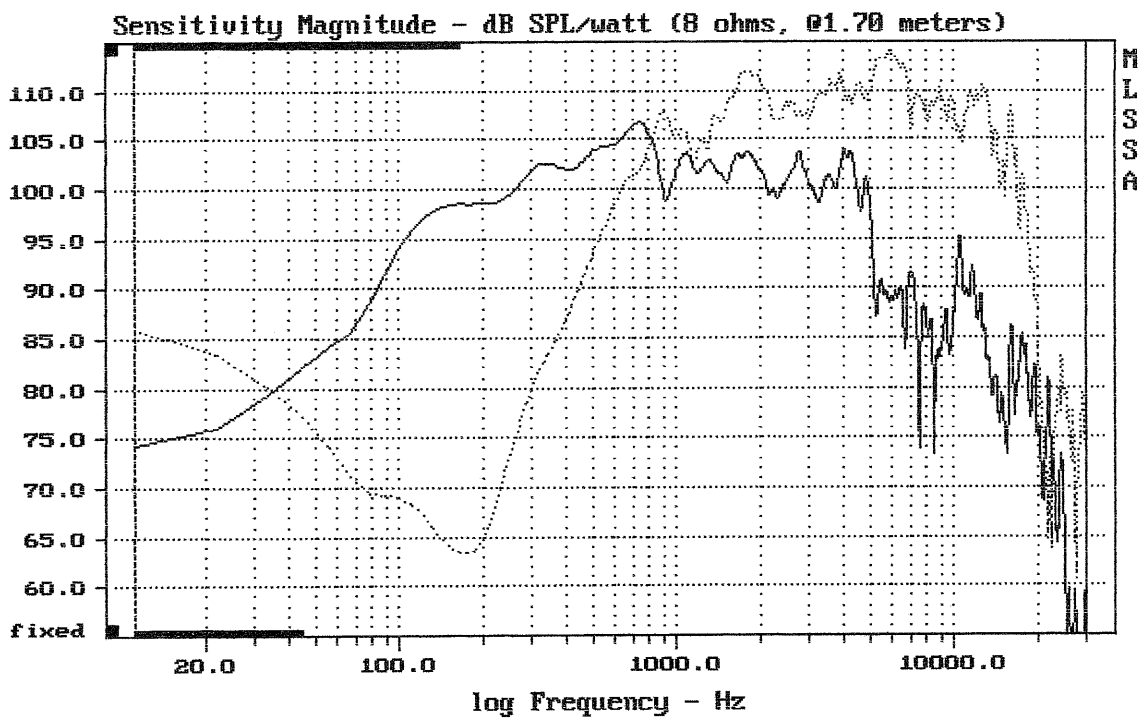
# Koaxiální reproduktor RCF CX15N251

- RCF CX15N251

<http://www.prodance.cz/cx15n251-8ohm.html>

Schéma výhybky:

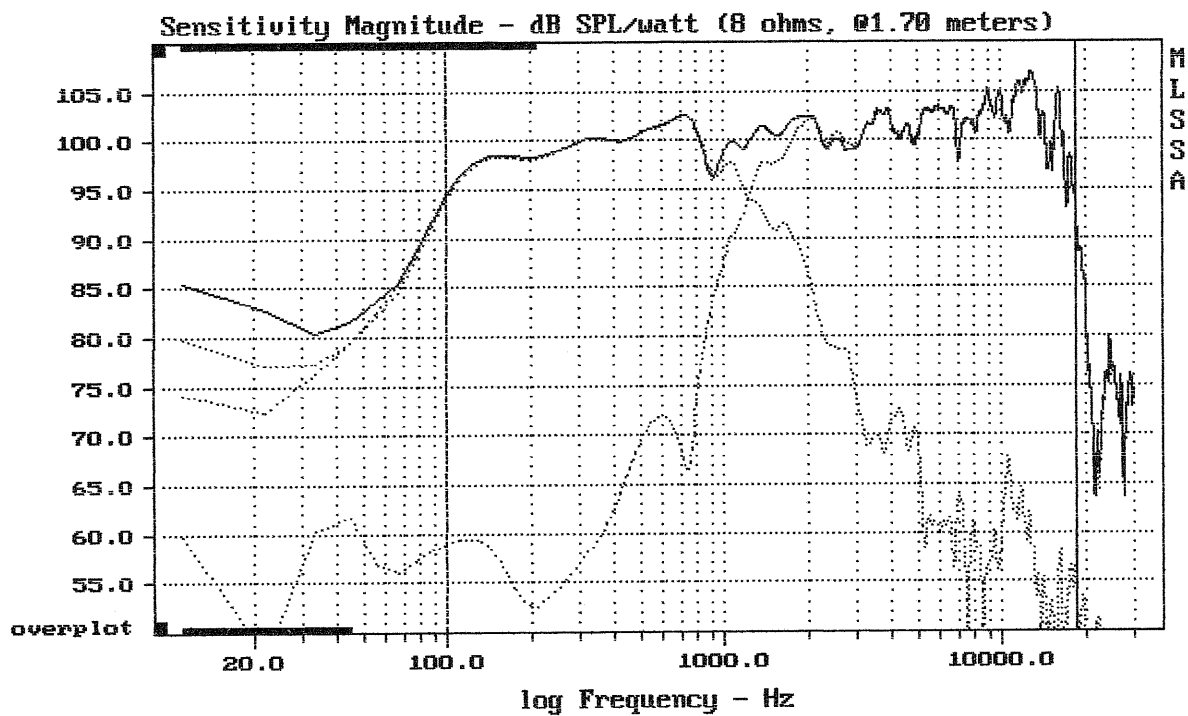




CURSOR: dy = 17.001 x = 30007.1014 (2704)

CX15N251

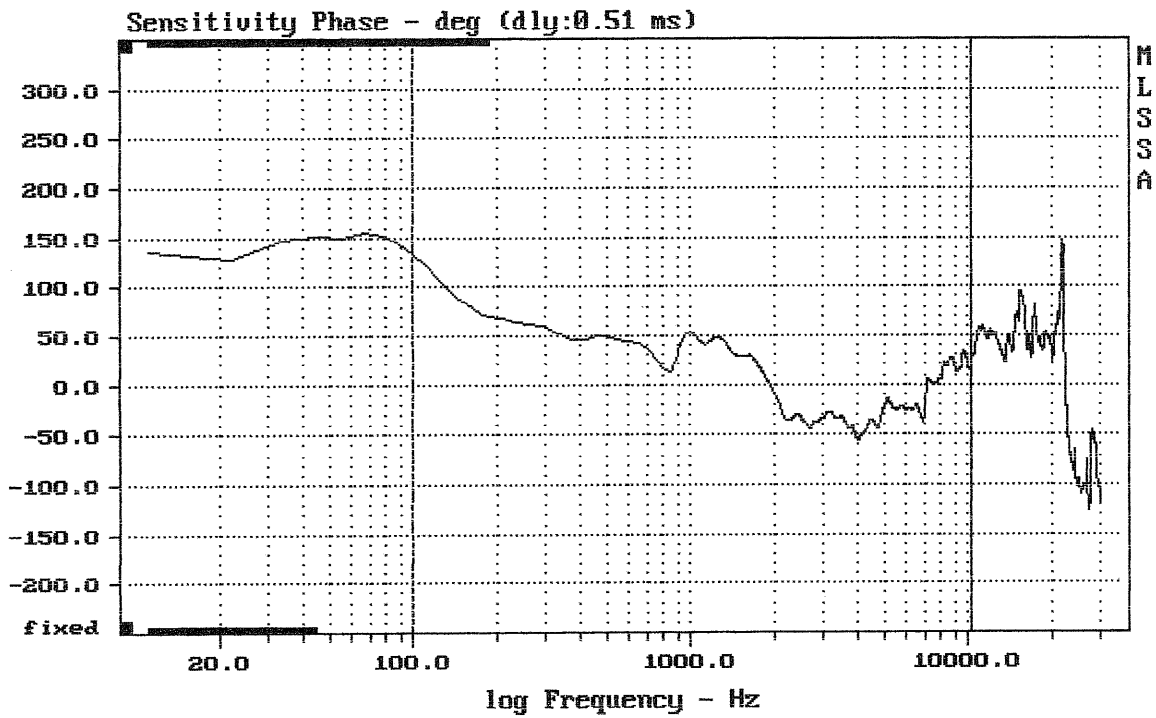
MLSSA: Frequency Domain



Level (100:10600 Hz) = 101.06 dB SPL/watt (8 ohms, @1.70 meters)

CX15N251

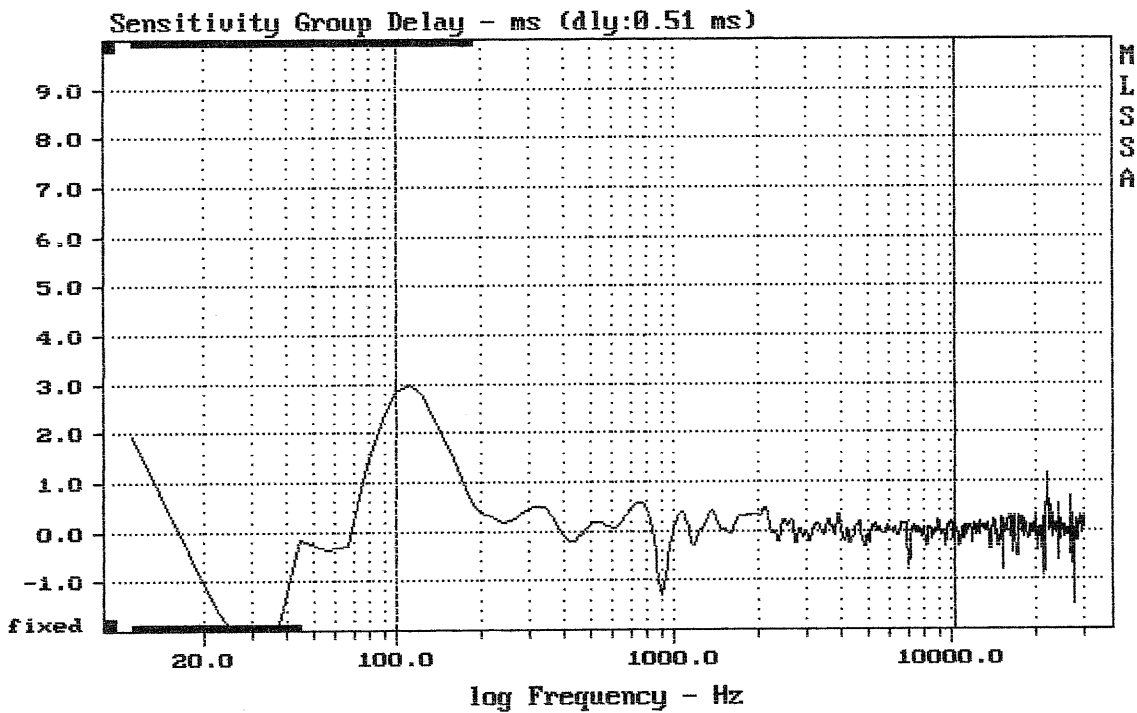
MLSSA: Frequency Domain



mean: -3.889, rms: 31.86, std: 31.62, max: 133.2, min: -54.69

CX15N251

MLSSA: Frequency Domain

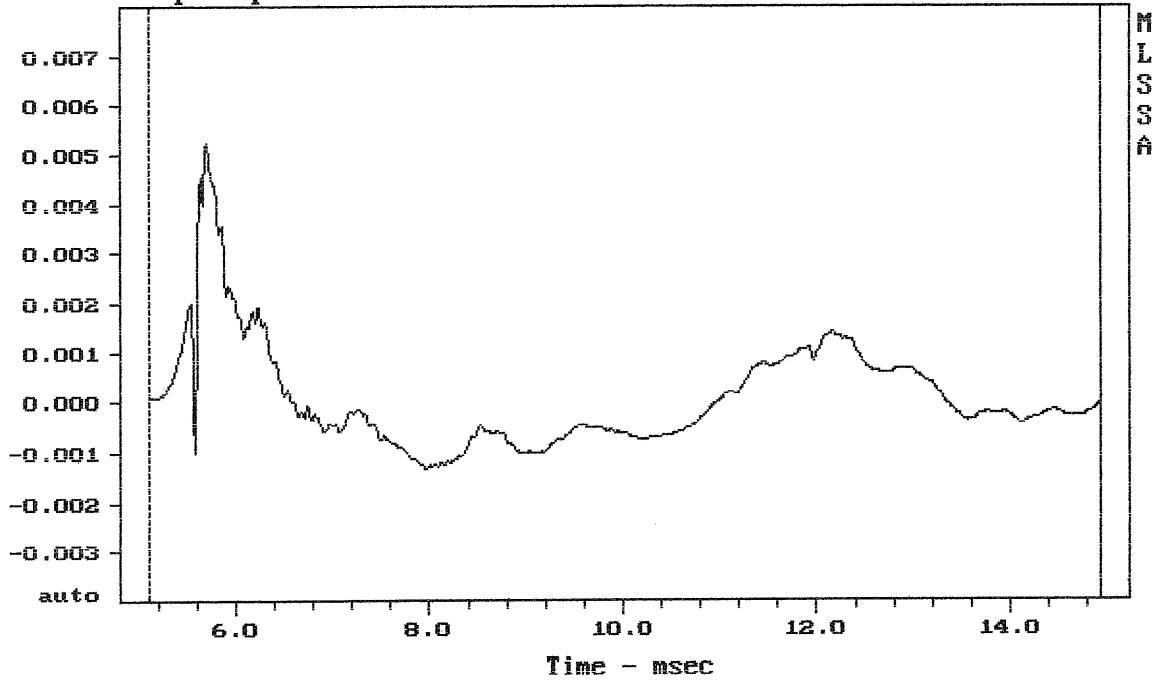


mean: 0.03314, rms: 0.2969, std: 0.295, max: 2.976, min: -1.294

CX15N251

MLSSA: Frequency Domain

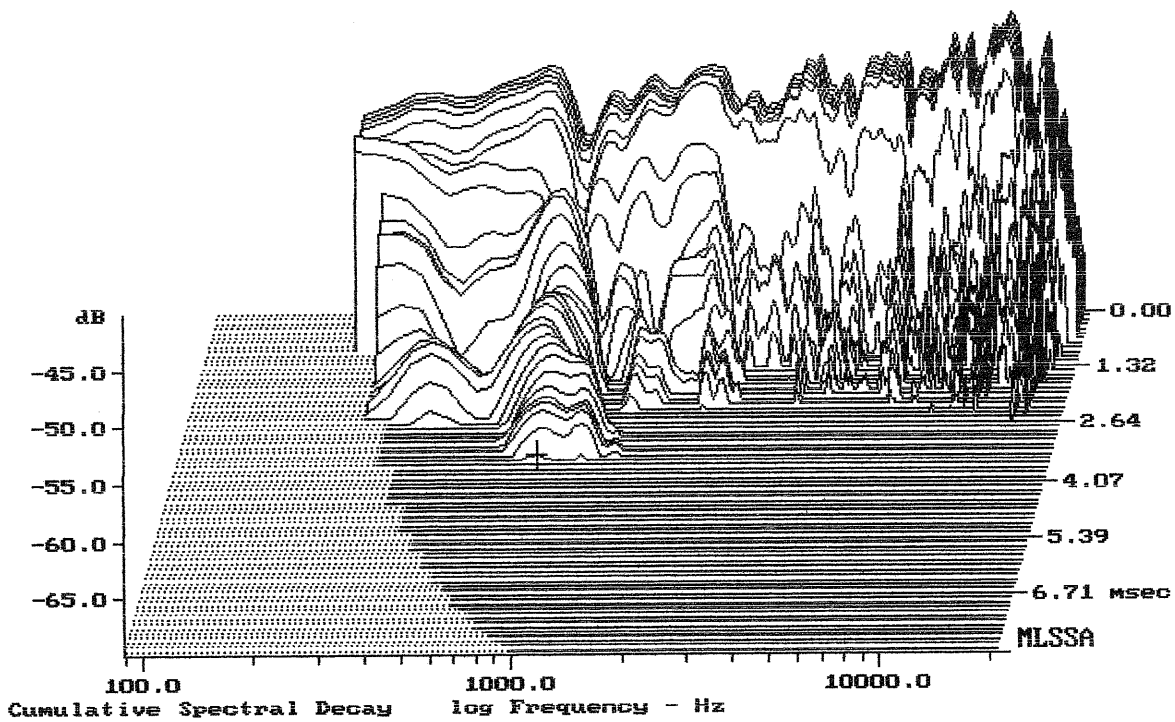
Step Response - volts



mean: 8.428e-005, rms: 0.001051, std: 0.001048, max: 0.005231, min: -0.001304

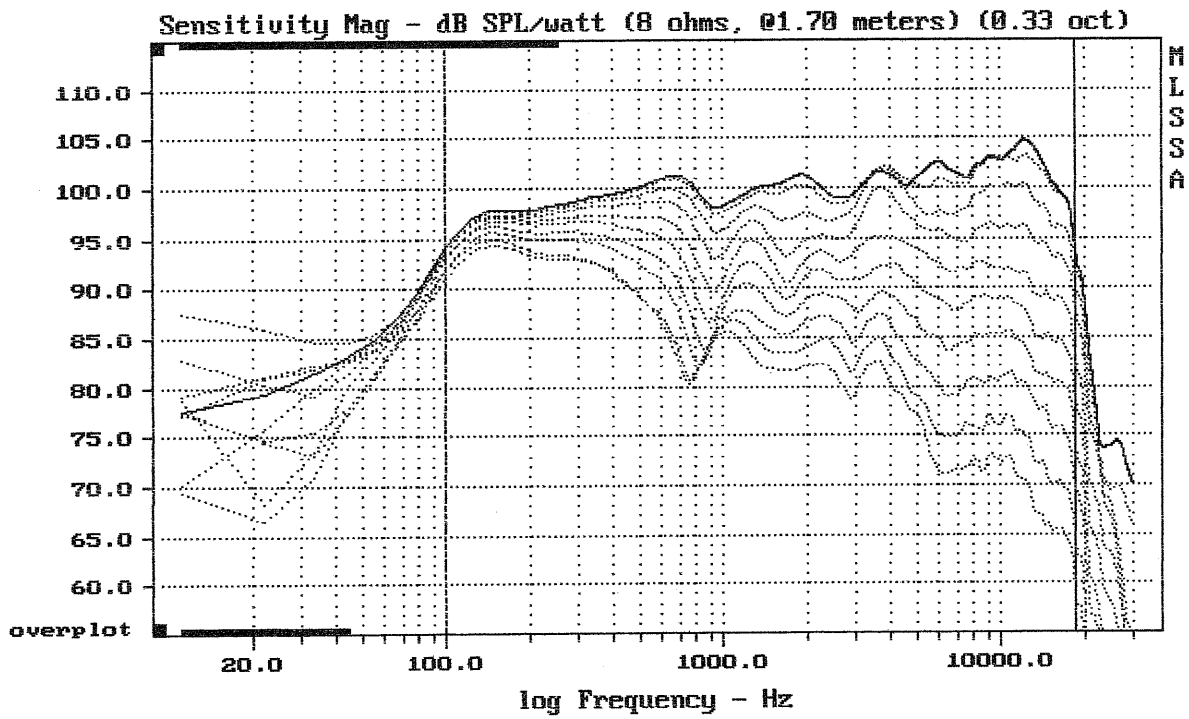
CX15N251

MLSSA: Time Domain



-69.50 dB, 843 Hz (19), 3.520 msec (33)

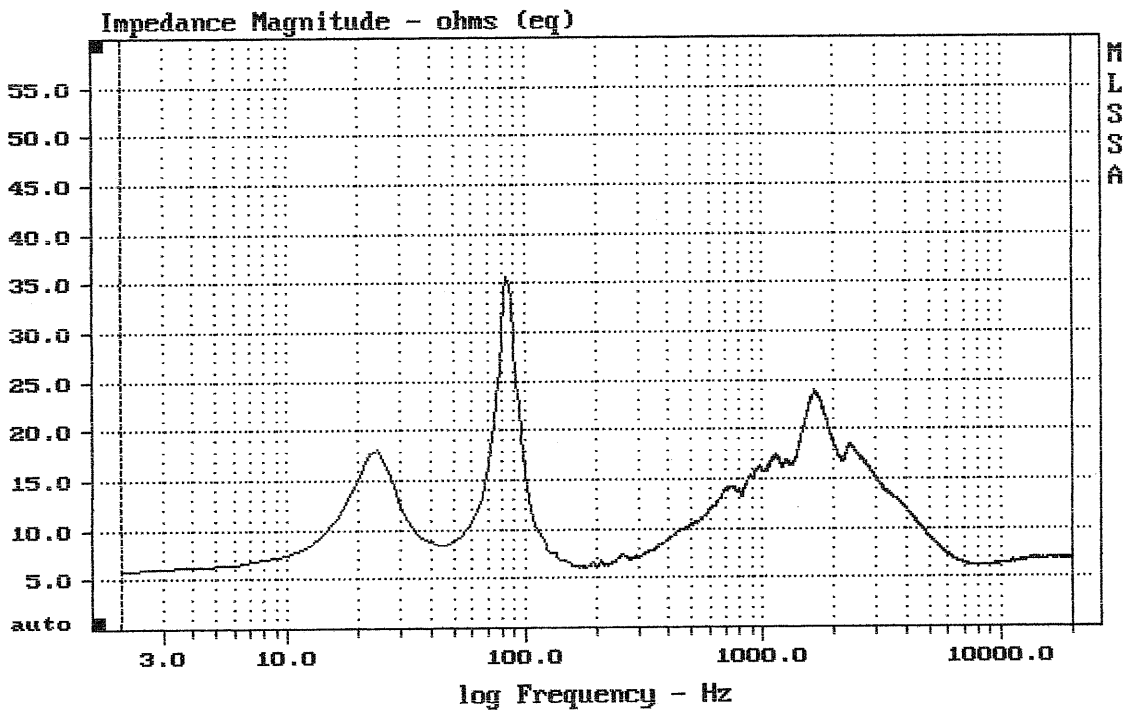
DTTO



mean: 75.73, rms: 79.32, std: 6.59, max: 94.38, min: 58.25

CX15N251

MLSSA: Frequency Domain



mean: 8.694, rms: 9.52, std: 3.88, max: 35.64, min: 5.891

CX15N251

MLSSA: Frequency Domain