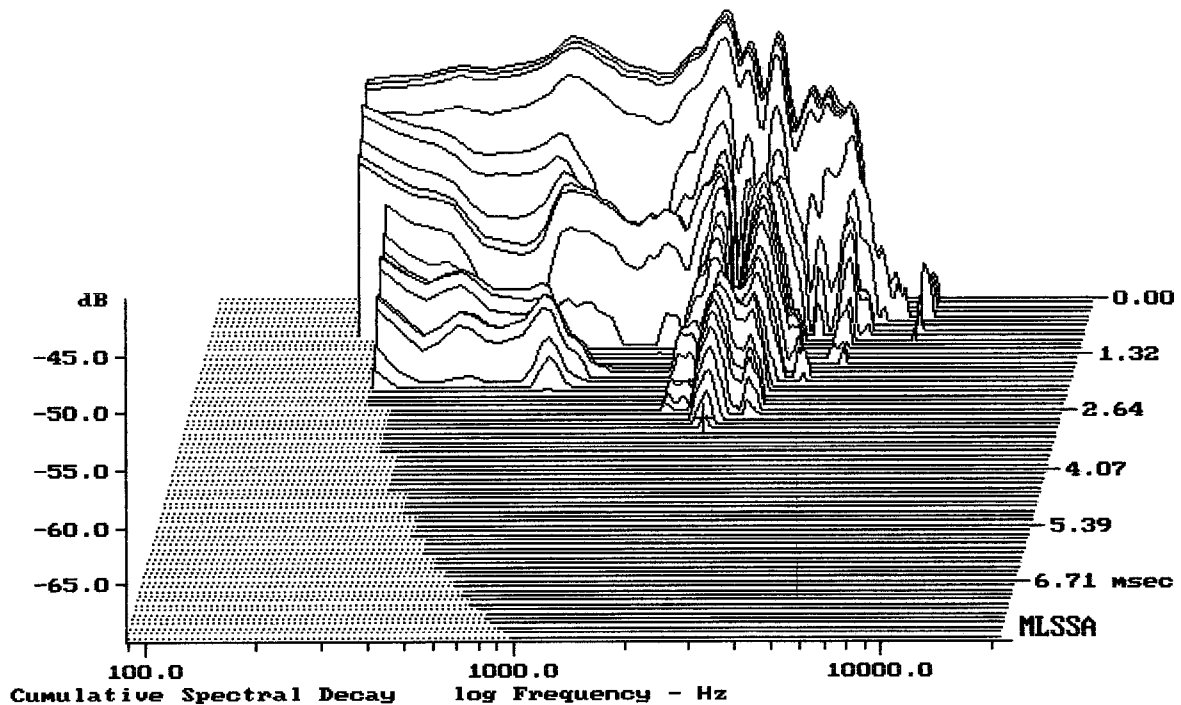


Level (100:5005 Hz) = 96.50 dB SPL/watt (8 ohms, @1.00 meters)

EU DL12BFH FROM DYNACORD D12

MLSSA: Frequency Domain



-69.13 dB, 2264 Hz (51), 3.000 msec (29)

Measured Data

QC Limits

Line	Parameter	Value	Units
1	RMSE-free	1.76	Ohms
2	Fs	61.19	Hz
3	Re	4.01	Ohms[dc]
4	Res	96.93	Ohms
5	Qms	10.16	
6	Qes	0.42	
7	Qts	0.40	
8	L1	0.50	mH
9	L2	1.25	mH
10	R2	6.15	Ohms
11	RMSE-load	0.79	Ohms
12	Vas(Sd)	65.88	liters
13	Mms	40.66	grams
14	Cms	166	$\mu\text{M}/\text{Newton}$
15	B1	12.21	Tesla-M
16	SPLref(Sd)	97.4	dB[Re]
17	Rub-index	0.25	

Method: Mass-loaded (60.00 grams)

Area (Sd): 530.93 sq cm

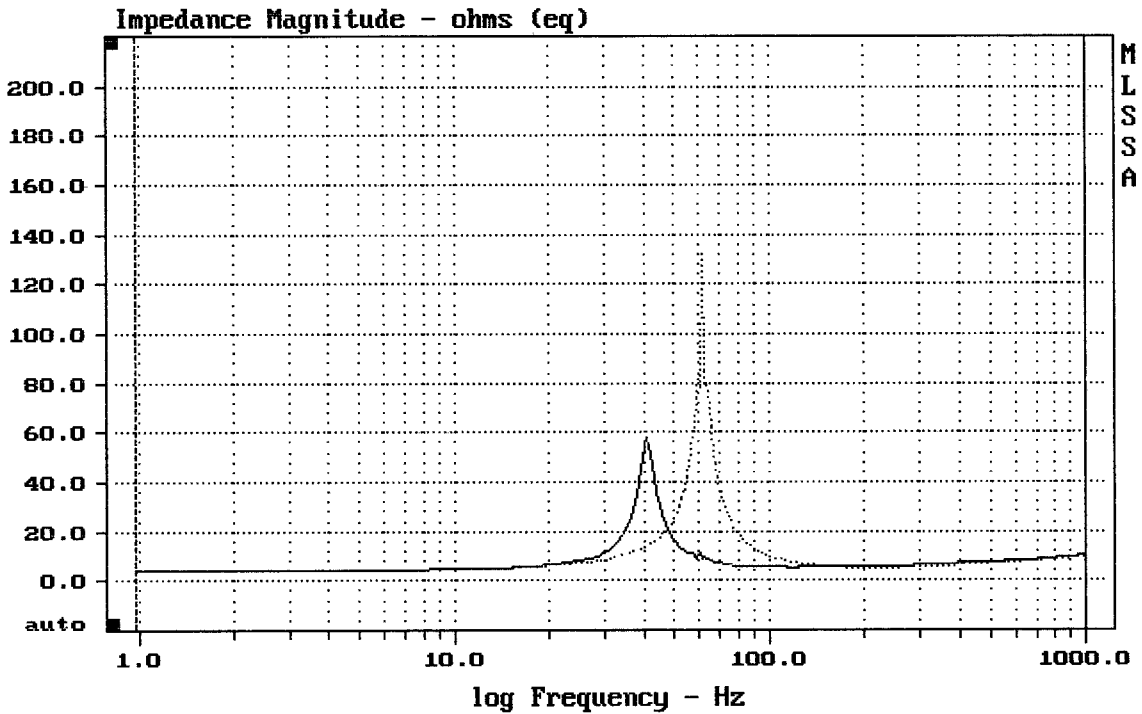
DCR mode: Measure (-0.13 ohms)

QC file: CLOSED

Analysis successful. Shift in Fs = -33.3% (-20% to -50% is recommended).

EV DL12BFH FROM DYNACORD D12

MLSSA: Parameters



mean: 8.758, rms: 12.11, std: 8.364, max: 132.2, min: 4.112

MLSSA: Frequency Domain