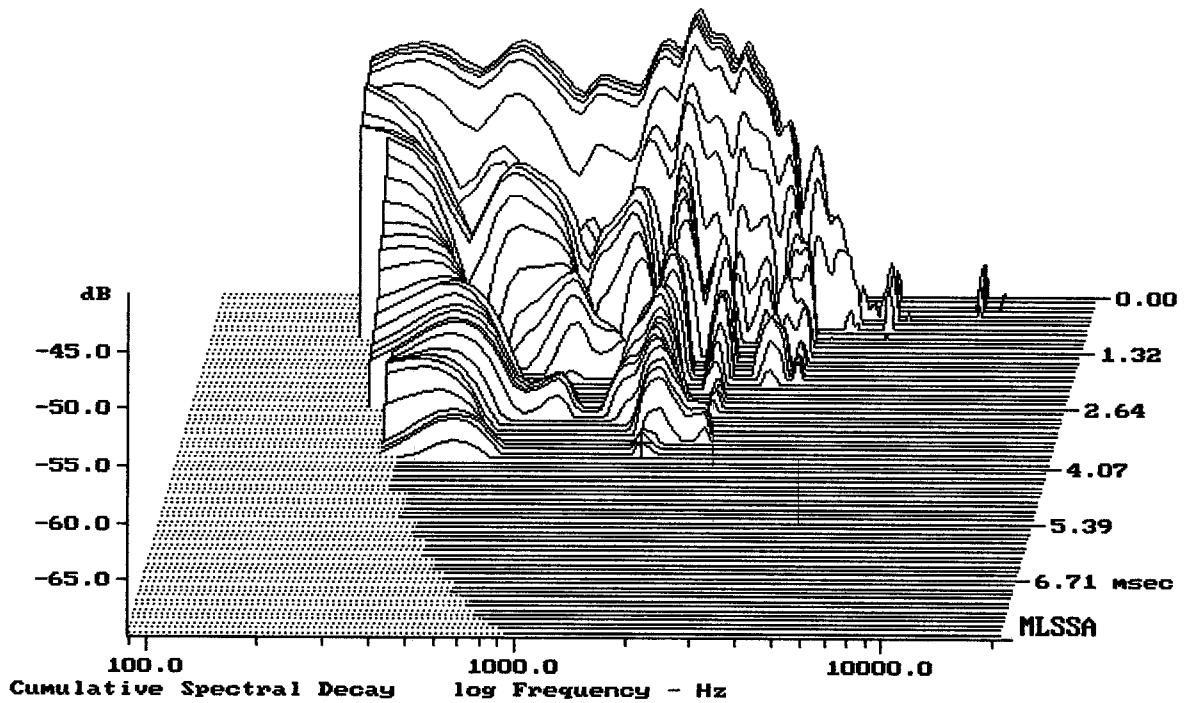


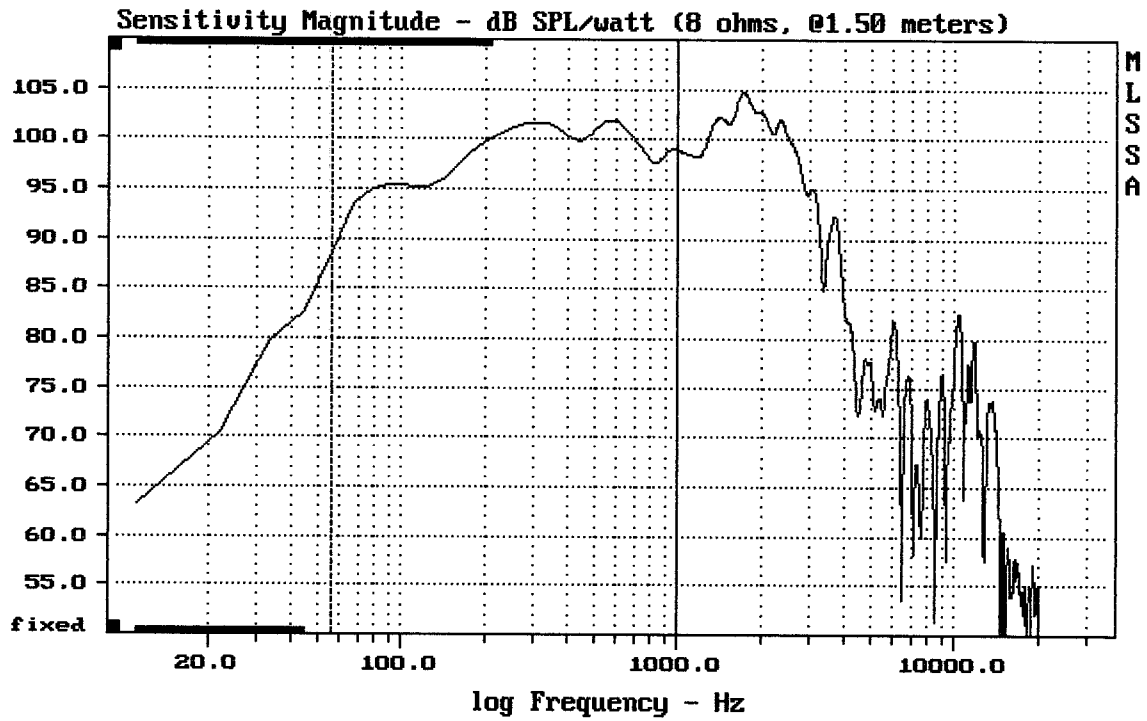
Level (55:3007 Hz) = 99.70 dB SPL/watt (8 ohms, @1.50 meters)

L18S801

MLSSA: Frequency Domain



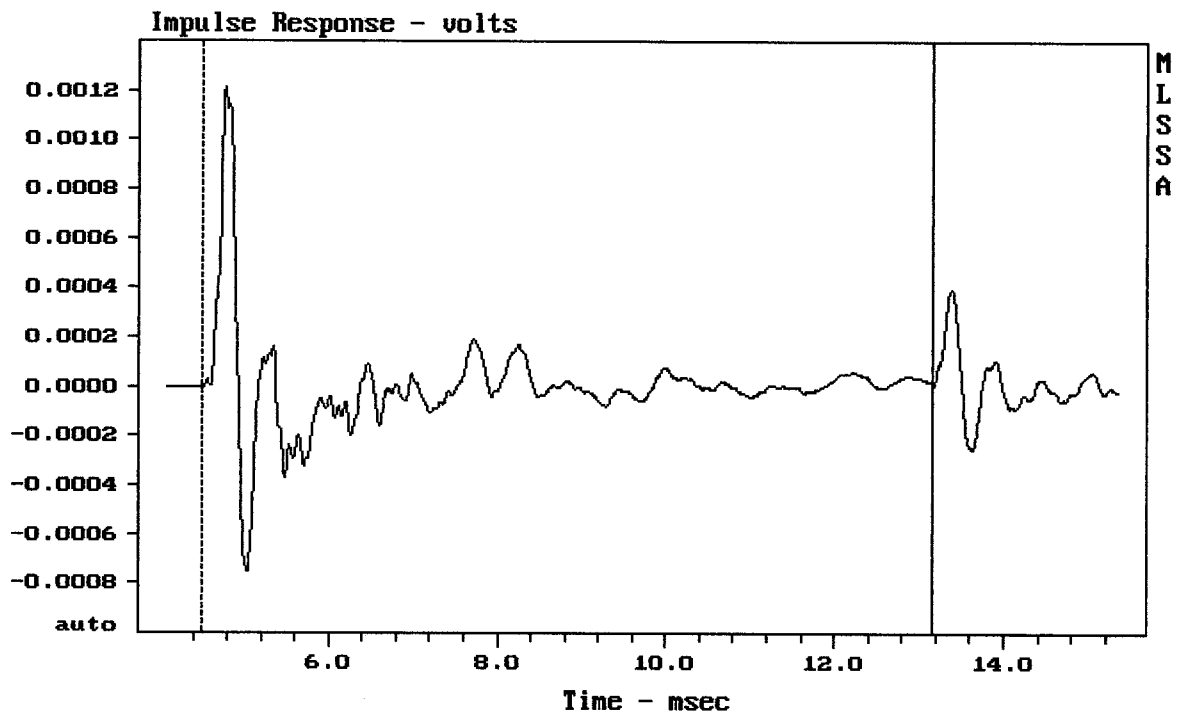
-68.96 dB, 1598 Hz (36), 3.740 msec (35)



Level (55:999 Hz) = 98.96 dB SPL/watt (8 ohms, @1.50 meters)

L18S801

MLSSA: Frequency Domain



mean: 4.191e-007, rms: 0.0001932, std: 0.0001932, max: 0.00121, min: -0.0007483

L18S801

Measured Data

QC Limits

Line	Parameter	Value	Units
1	RMSE-free	0.75	Ohms
2	Fs	42.28	Hz
3	Re	4.58	Ohms[dc]
4	Res	136.15	Ohms
5	Qms	8.03	
6	Qes	0.27	
7	Qts	0.26	
8	L1	0.74	mH
9	L2	1.71	mH
10	R2	7.93	Ohms
11	RMSE-load	0.91	Ohms
12	Vas(Sd)	204.66	liters
13	Mms	131.77	grams
14	Cms	108	$\mu\text{M}/\text{Newton}$
15	Bl	24.37	Tesla-M
16	SPLref(Sd)	99.4	dB[Re]
17	Rub-index	0.01	

Method: Mass-loaded (140.00 grams)

Area (Sd): 1164.16 sq cm

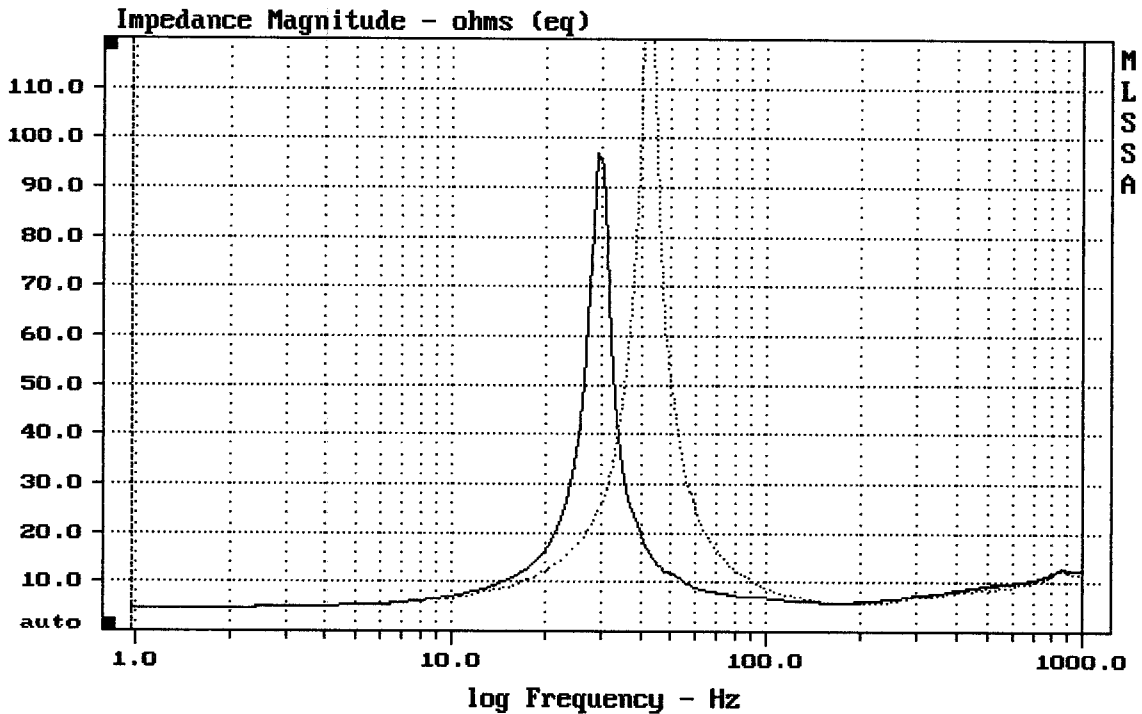
DCR mode: Measure (-0.07 ohms)

QC file: CLOSED

Analysis successful. Shift in Fs = -30.2% (-20% to -50% is recommended).

L18S801

MLSSA: Parameters



mean: 10.9, rms: 15.43, std: 10.92, max: 140.8, min: 4.609

MLSSA: Frequency Domain