

Sestava

Osazení:

RCF MR8N301 8/OHM + MegatonD7065 + B&C Speakers DE250 + RCF HF64

· RCF MR8N301 8/ohm

E-shop: <http://eshop.prodance.cz/mr8n301-8-ohm/d-87622/>

· MEGATON D7065

E-shop: <http://eshop.prodance.cz/d7065-zvukovod/d-85334/>

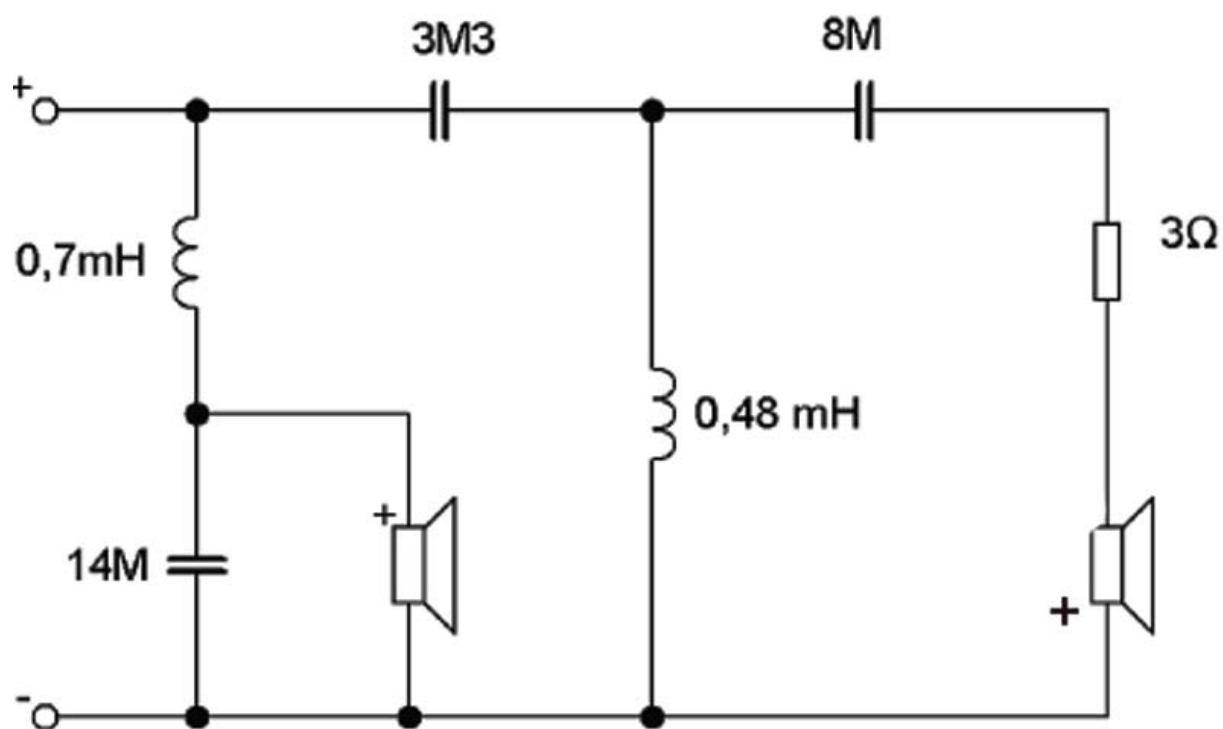
· B&C Speakers DE250 8/ohm

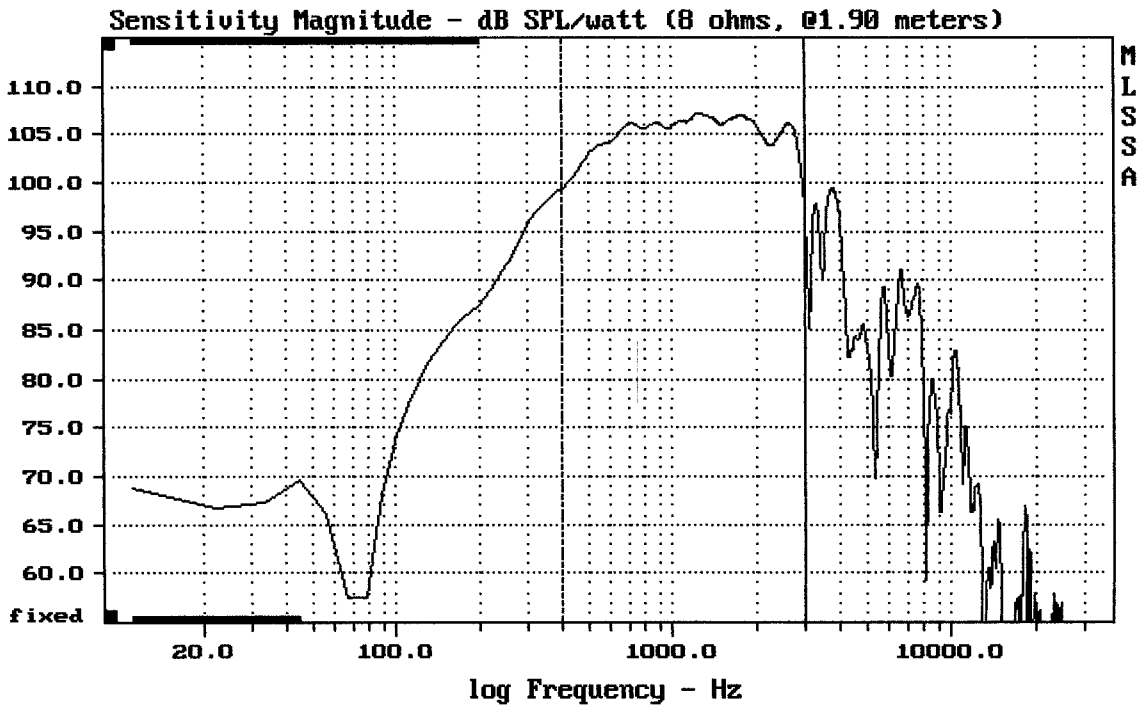
E-shop: <http://eshop.prodance.cz/de250-8-ohm/d-82306/>

· RCF HF64

E-shop: <http://eshop.prodance.cz/hf64/d-8166/>

Schéma výhybky:

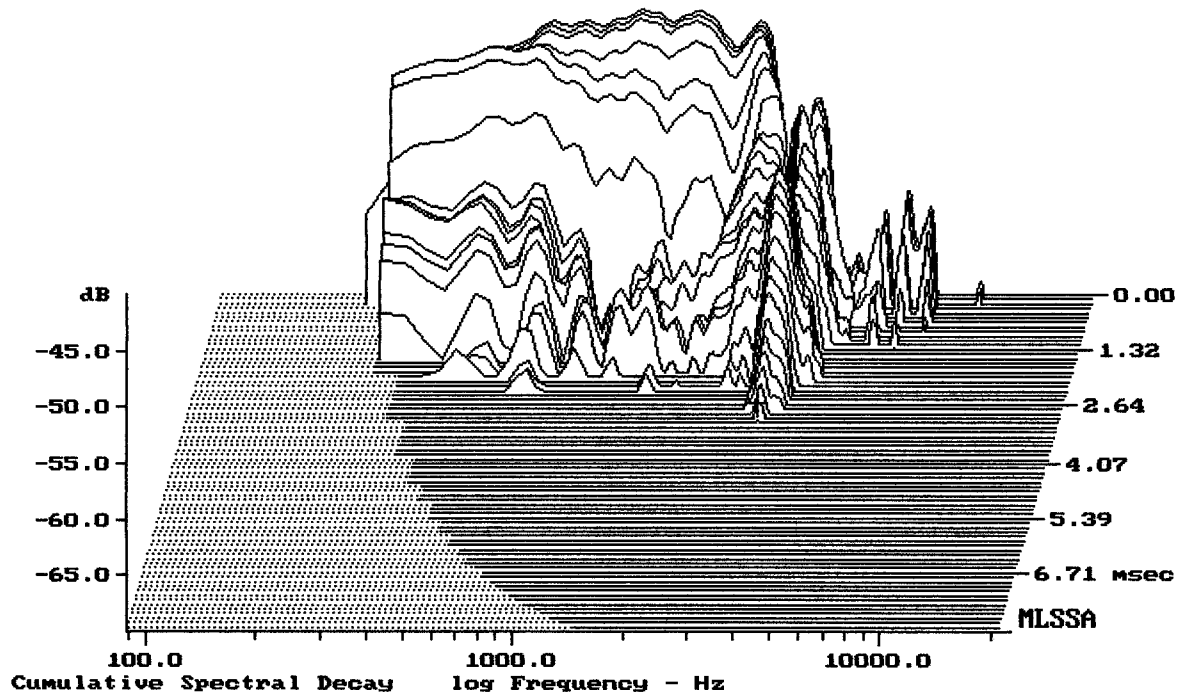




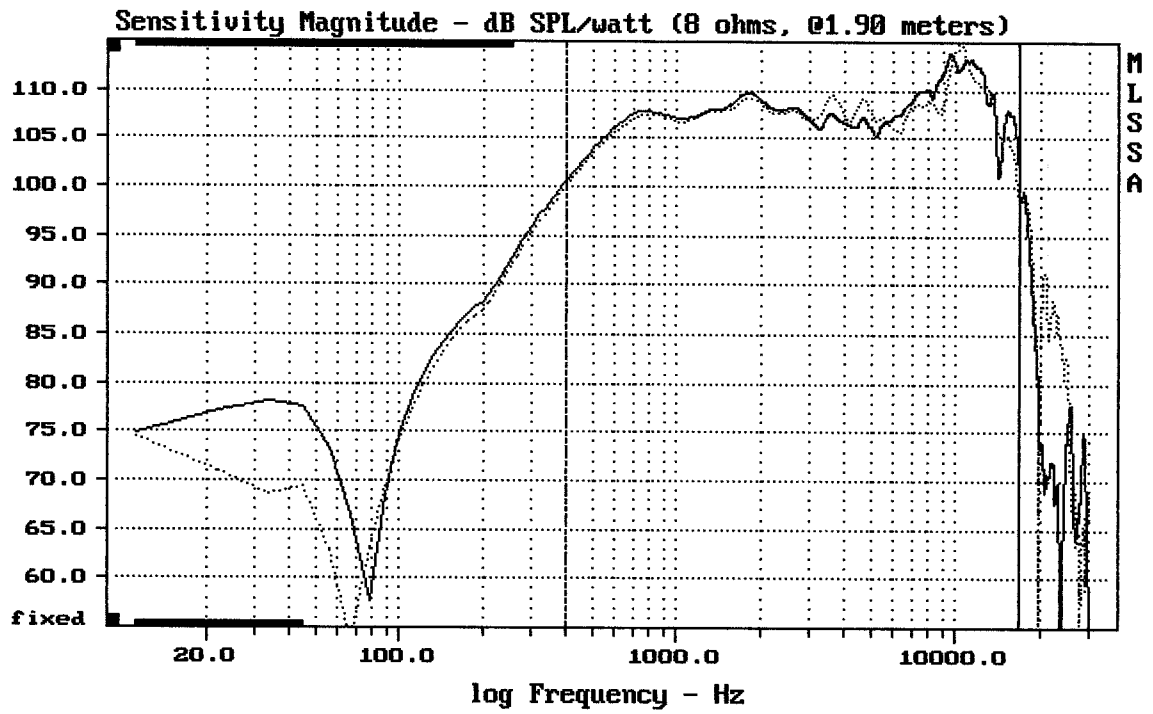
Level (400:2996 Hz) = 105.41 dB SPL/watt (8 ohms, @1.90 meters)

MR0N301 + D7065

MLSSA: Frequency Domain



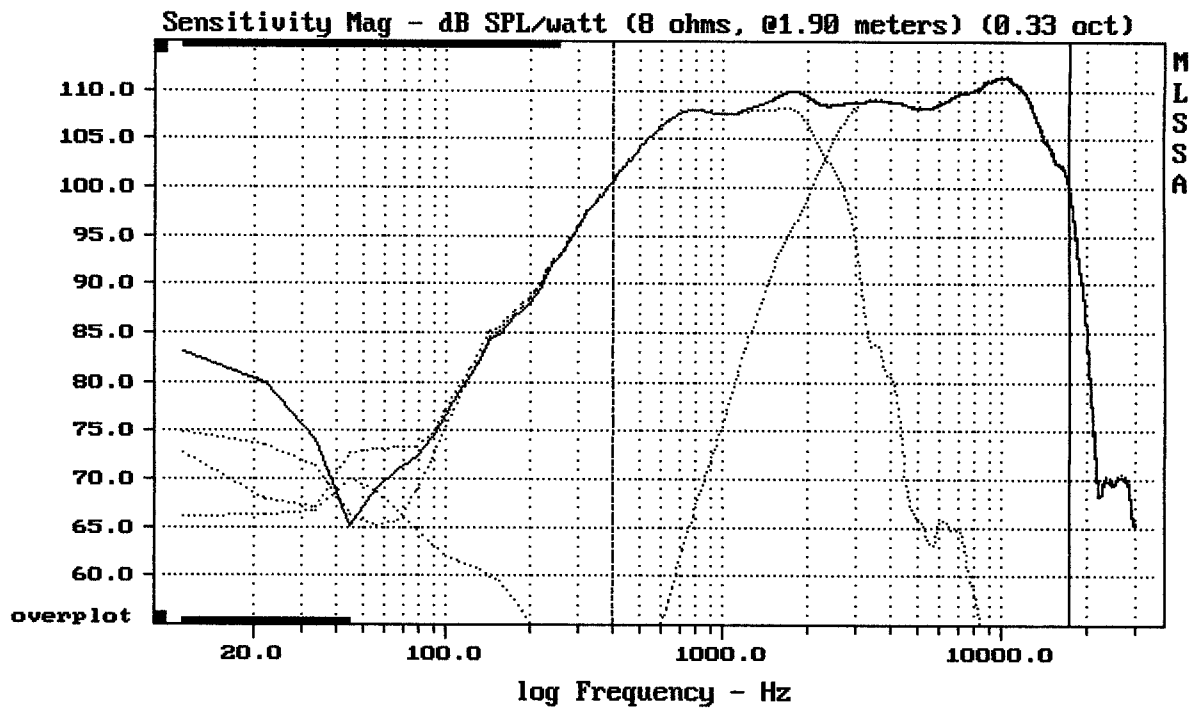
-68.69 dB, 3196 Hz (72), 2.970 msec (28)



Overlay Compare: dev= +4.4/-4.7, std= 1.8, avg= 0.49

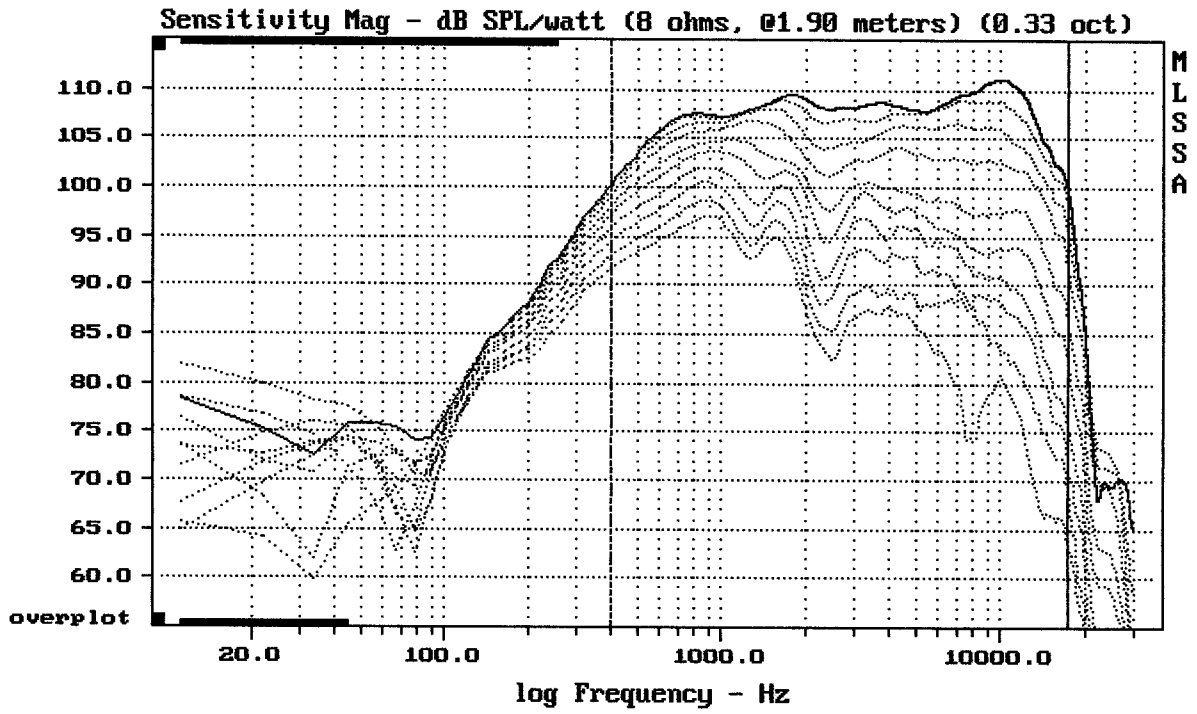
MR8N301 + D7065 + DE250 + HF64

MLSSA: Frequency Domain



Level (400:17500 Hz) = 108.41 dB SPL/watt (8 ohms, @1.90 meters) (0.33 oct)

MR8N301 + D7065 + DE250 + HF64

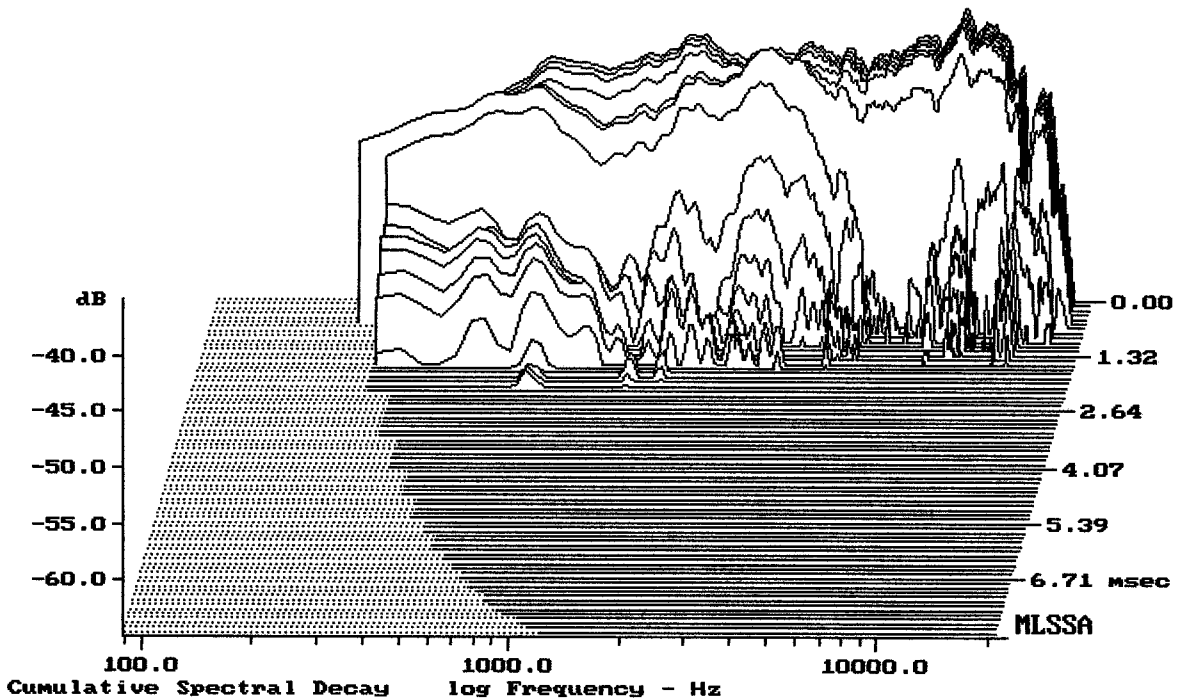


Overlay Compare: dev= +21/-8.9, std= 7.6, avg= -29

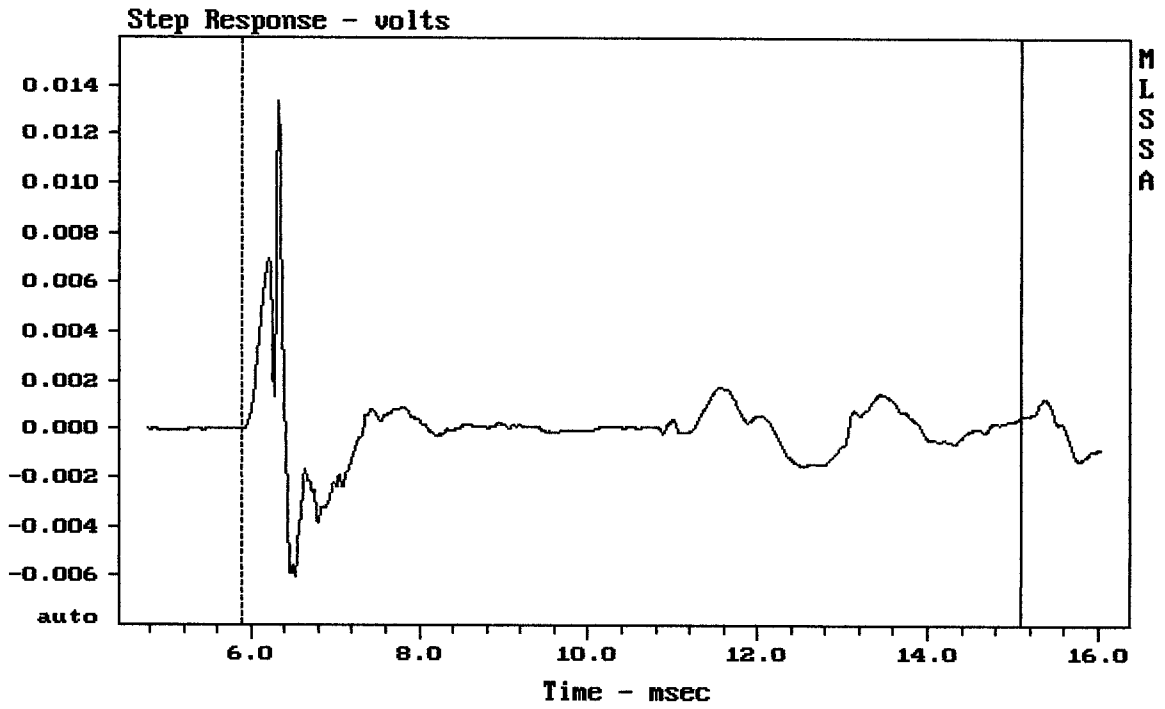
MR8N301 + D7065 + DE250 + HF64

2-22-86 7:11 PM

MLSSA: Frequency Domain



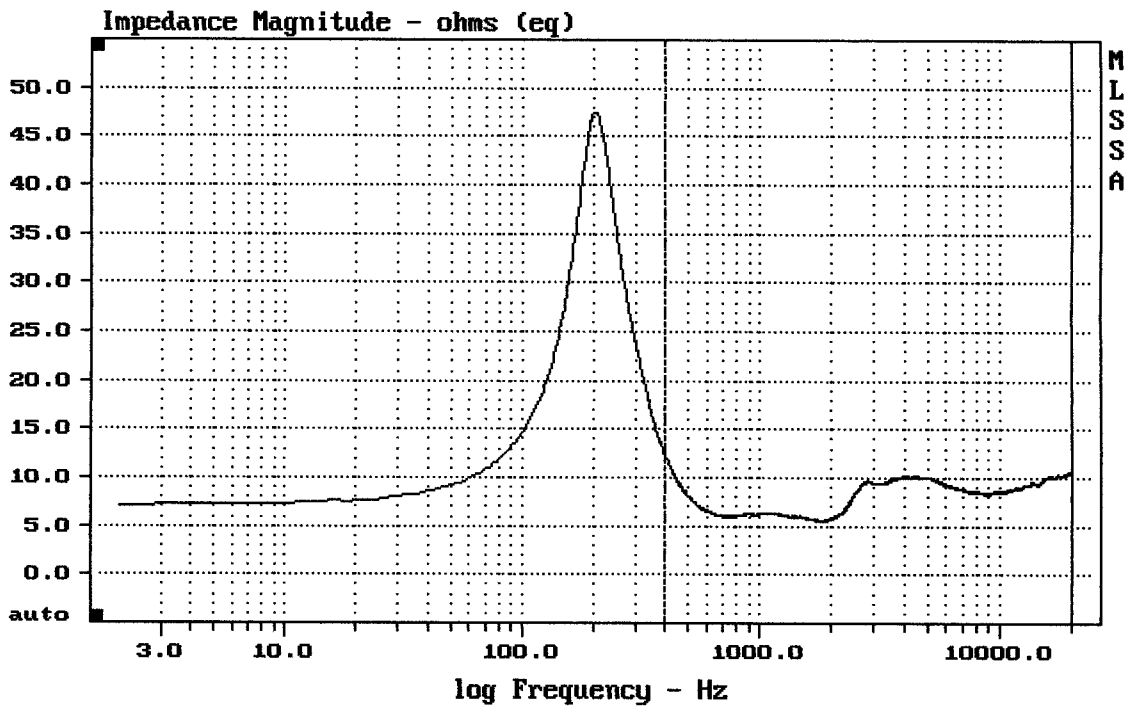
-62.36 dB, 2530 Hz (57), 1.540 msec (15)



mean: 6.421e-005, rms: 0.00167, std: 0.001669, max: 0.01336, min: -0.006068

MR8N301 + D7065 + DE250 + HF64

MLSSA: Time Domain



mean: 9.095, rms: 9.17, std: 1.173, max: 12.17, min: 5.447

MR8N301 + D7065 + DE250 + HF64