

Sestava

Osazení:

RCF MR8N301 8/ohm + MEGATON D7065 + B&C Speakers DE250 8/ohm + RCF HF94

· RCF MR8N301 8/ohm

E-shop: <http://eshop.prodance.cz/mr8n301-8-ohm/d-87622/>

· MEGATON D7065

E-shop: <http://eshop.prodance.cz/d7065-zvukovod/d-85334/>

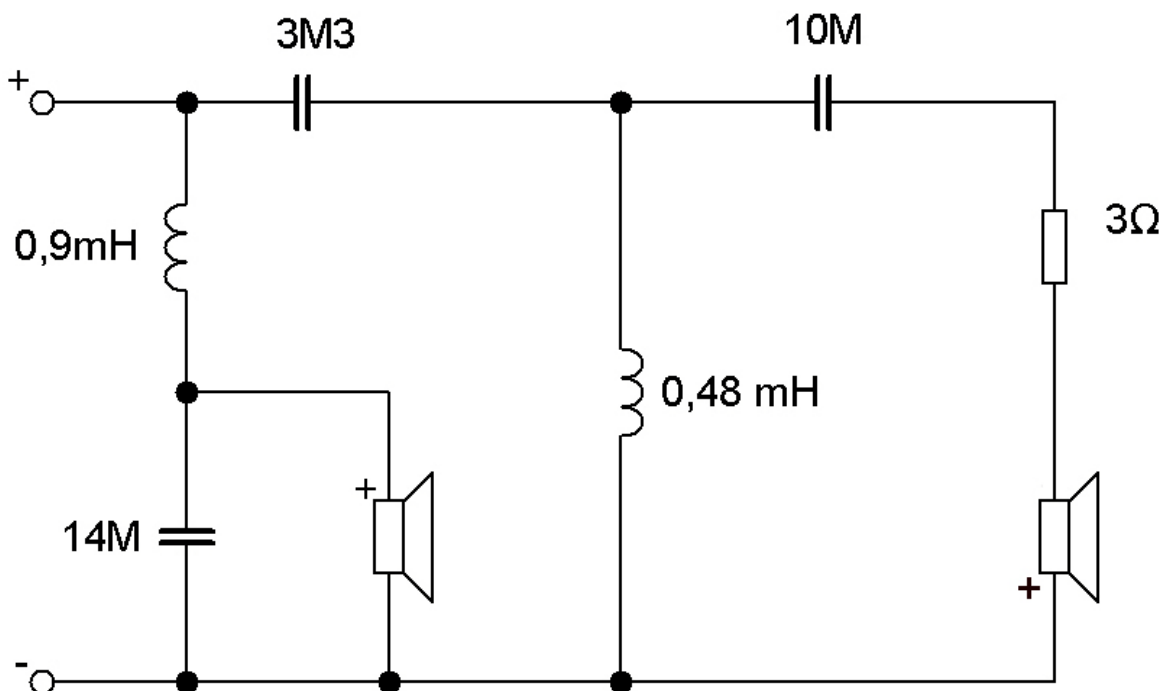
· B&C Speakers DE250 8/ohm

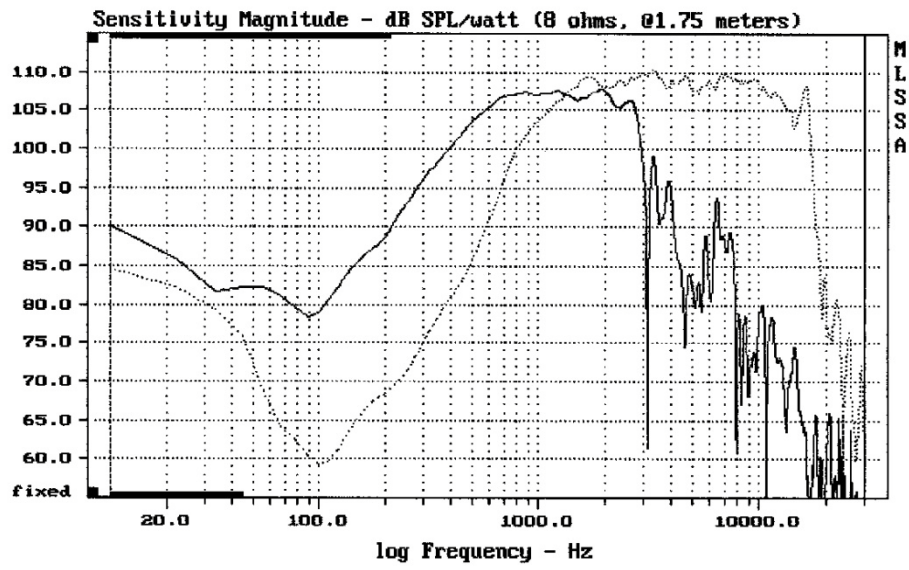
E-shop: <http://eshop.prodance.cz/de250-8-ohm/d-82306/>

· RCF HF94

E-shop: <http://eshop.prodance.cz/hf94/d-81664/>

Schéma výhybky:



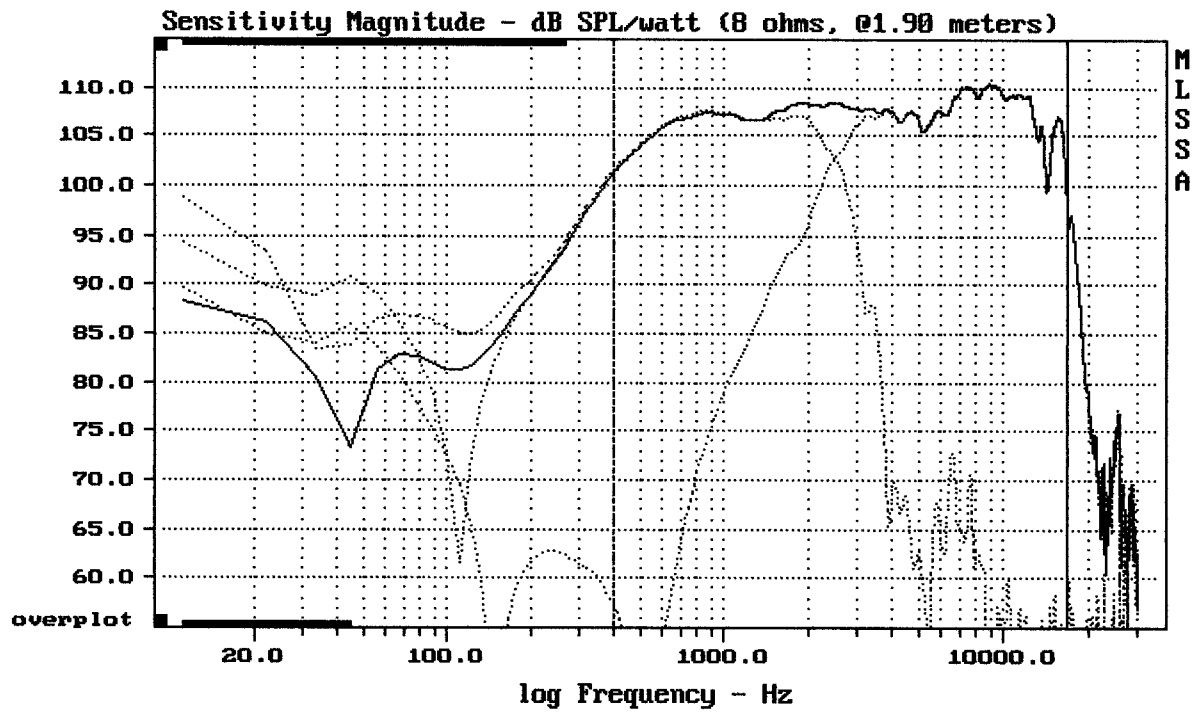


CURSOR: dy = 5.63475 x = 30007.1014 (2704)

MR0N301 + D7065 + DE250 + HF94

4-24-86 5:03 PM

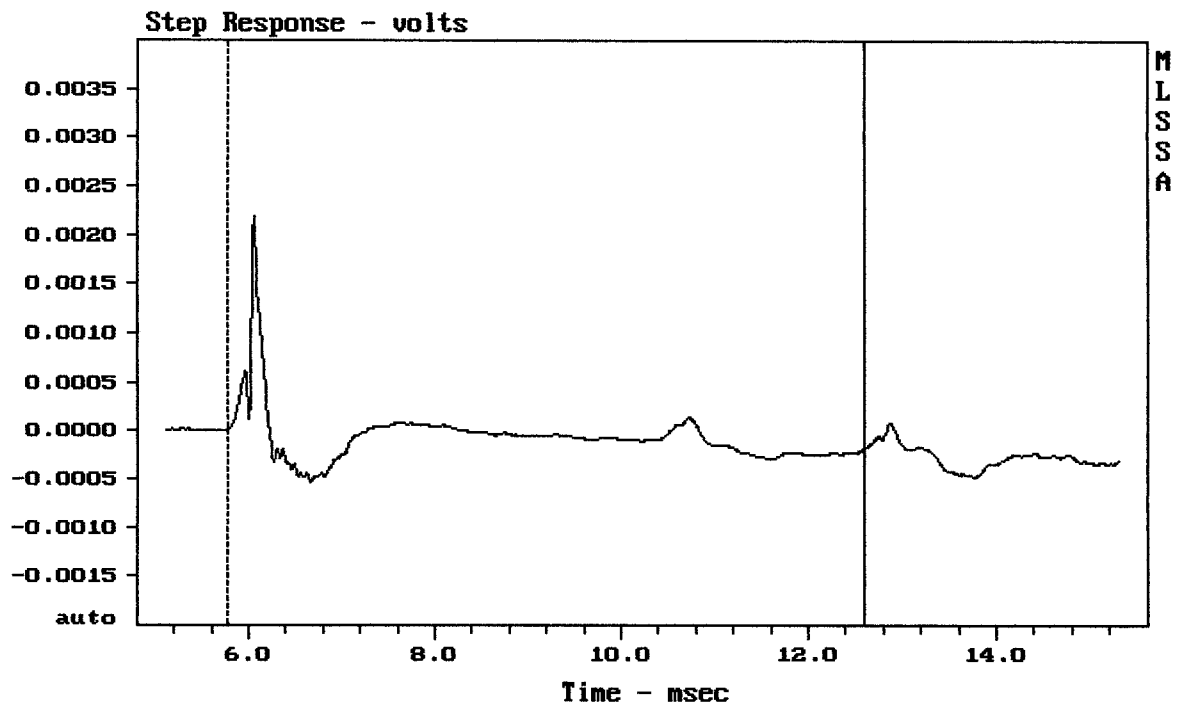
MLSSA: Frequency Domain



Level (400:17001 Hz) = 107.43 dB SPL/watt (8 ohms, @1.90 meters)

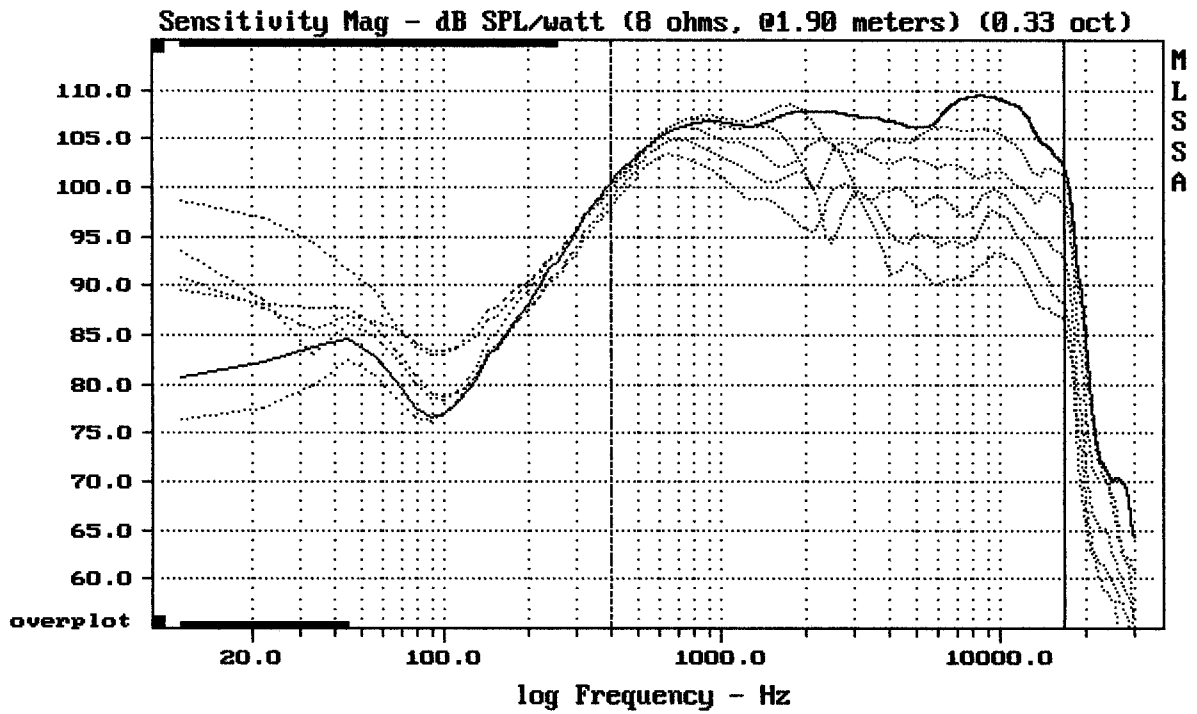
MR8N301 + D7065 + DE250 + HF94

MLSSA: Frequency Domain



mean: -6.978e-005, rms: 0.0002846, std: 0.000276, max: 0.002196, min: -0.00052

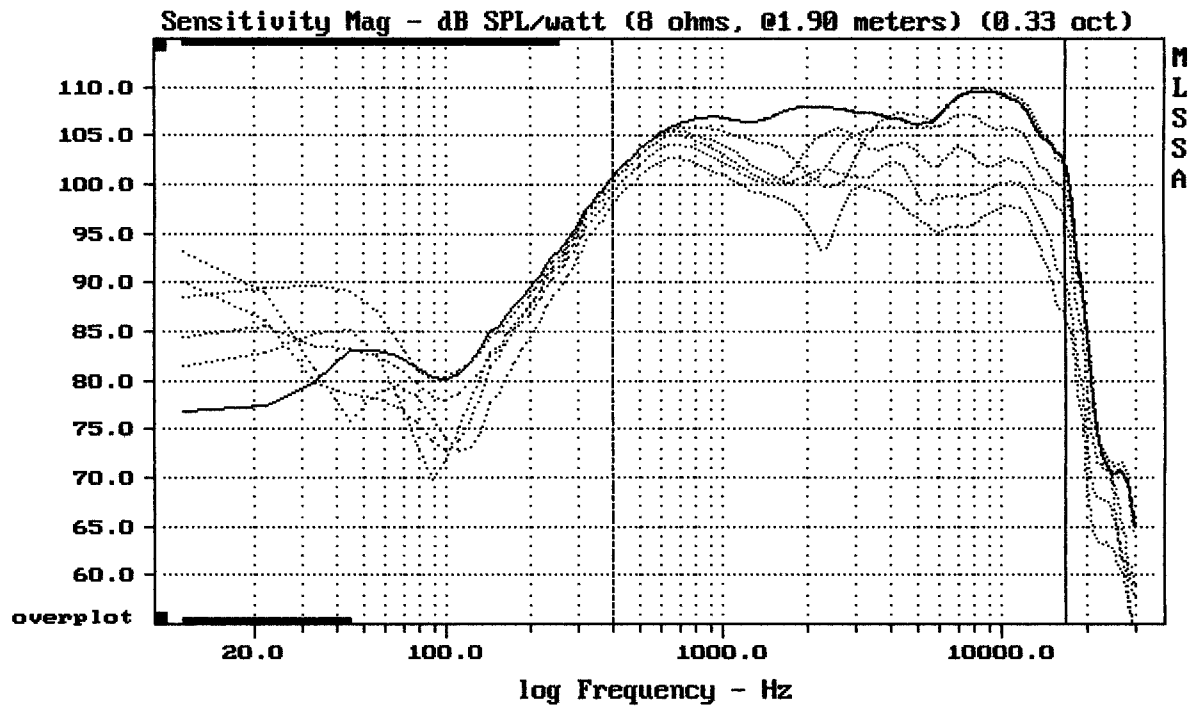
MR8N301 + D7065 + DE250 + HF94



Overlay Compare: dev= +13/-3.6, std= 3.7, avg= -15

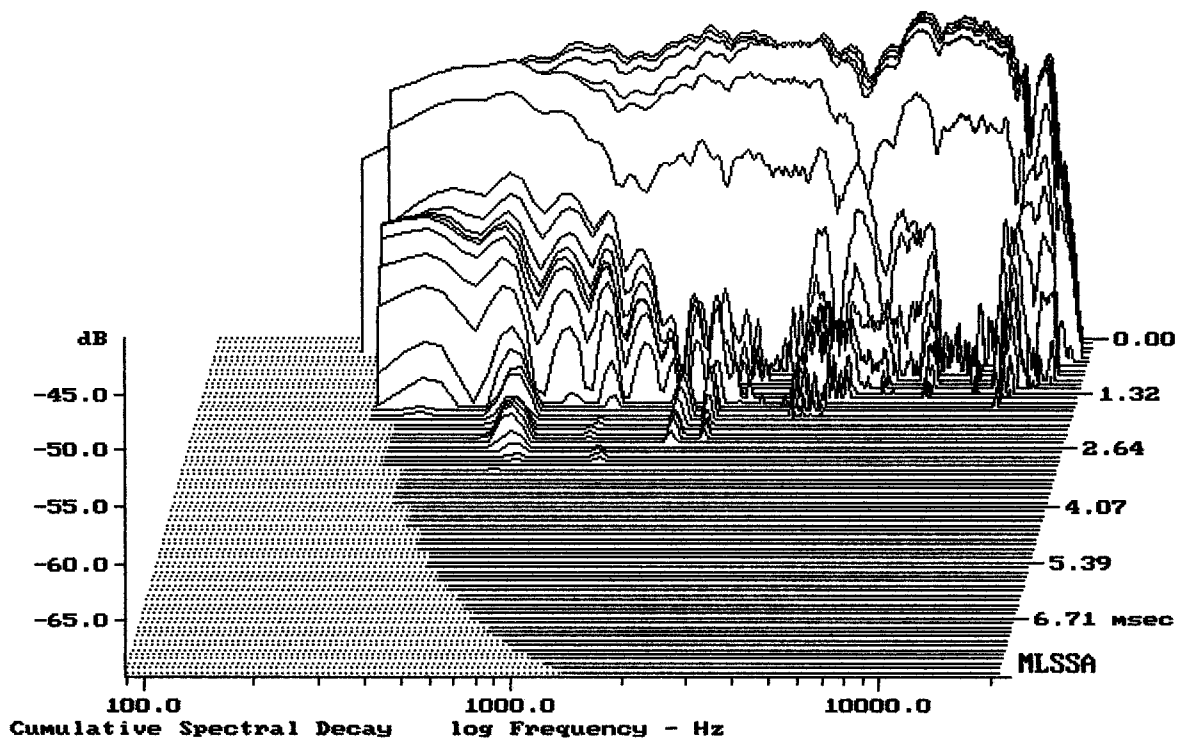
MR8N301 + D7065 + DE250 + HF94

MLSSA: Frequency Domain



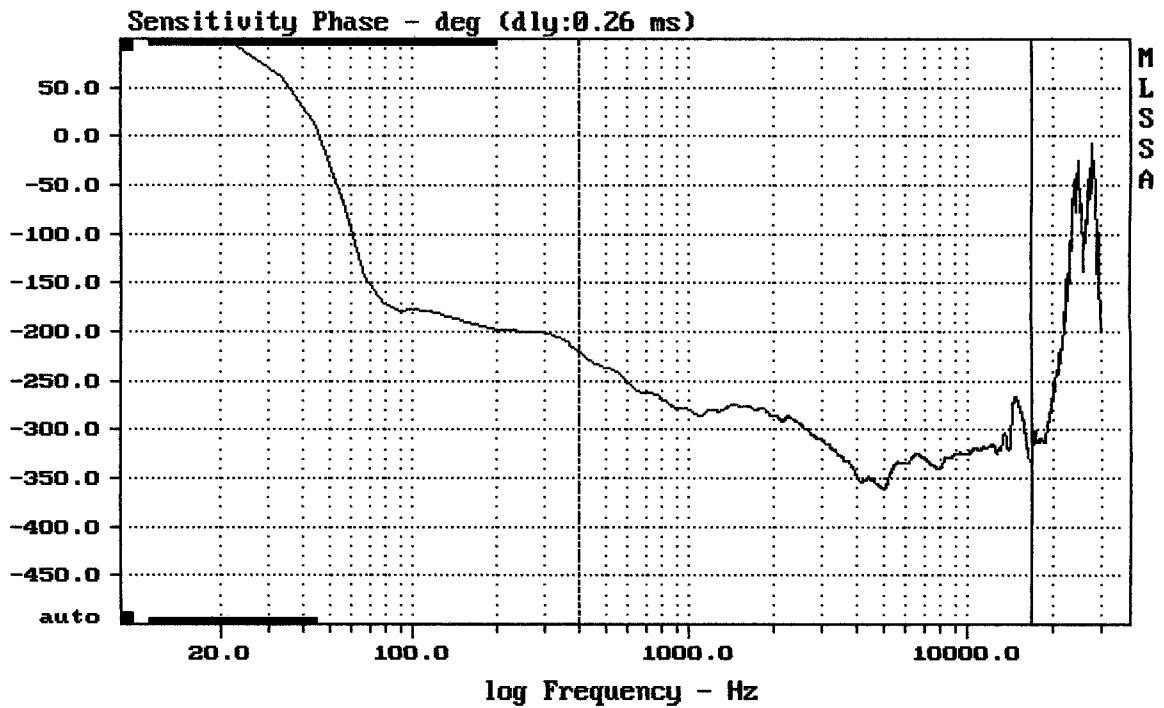
Overlay Compare: dev= +8.7/-4.5, std= 2.7, avg= -11

MR8N301 + D7065 + DE250 + HF94



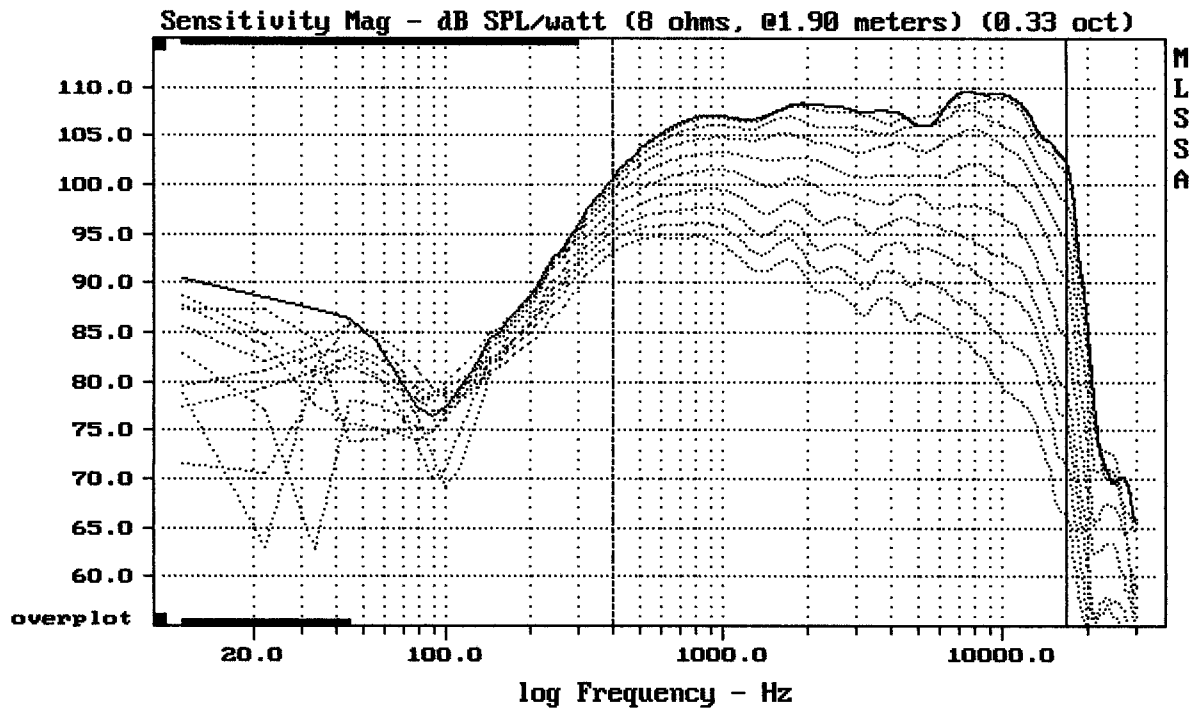
-69.22 dB, 3684 Hz (83), 1.870 msec (18)

DTTO



mean: -315.3, rms: 316.2, std: 24.55, max: -220.5, min: -361

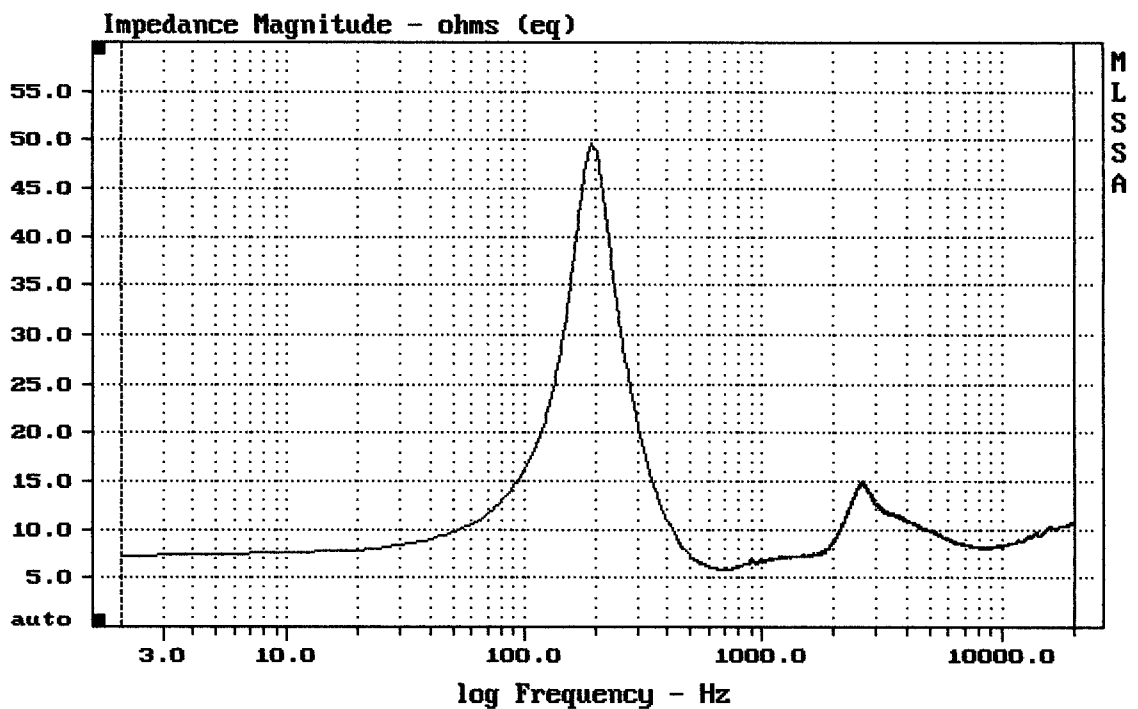
MR8N301 + D7065 + DE250 + HF94



Overlay Compare: dev= +19/-10, std= 6.8, avg= -26

MR8N301 + D7065 + DE250 + HF94

MLSSA: Frequency Domain



mean: 9.724, rms: 10.16, std: 2.961, max: 49.62, min: 5.754

MR8N301 + D7065 + DE250 + HF94