

Sestava: RCF MR8N301 + RCF H6000 + RCF ND3030T3 + RCF HF94

Osazení:

- **RCF MR8N301**

<http://eshop.prodance.cz/mr8n301-8-ohm/d-87622/>

- **RCF H6000**

<http://eshop.prodance.cz/h6000/d-92589/>

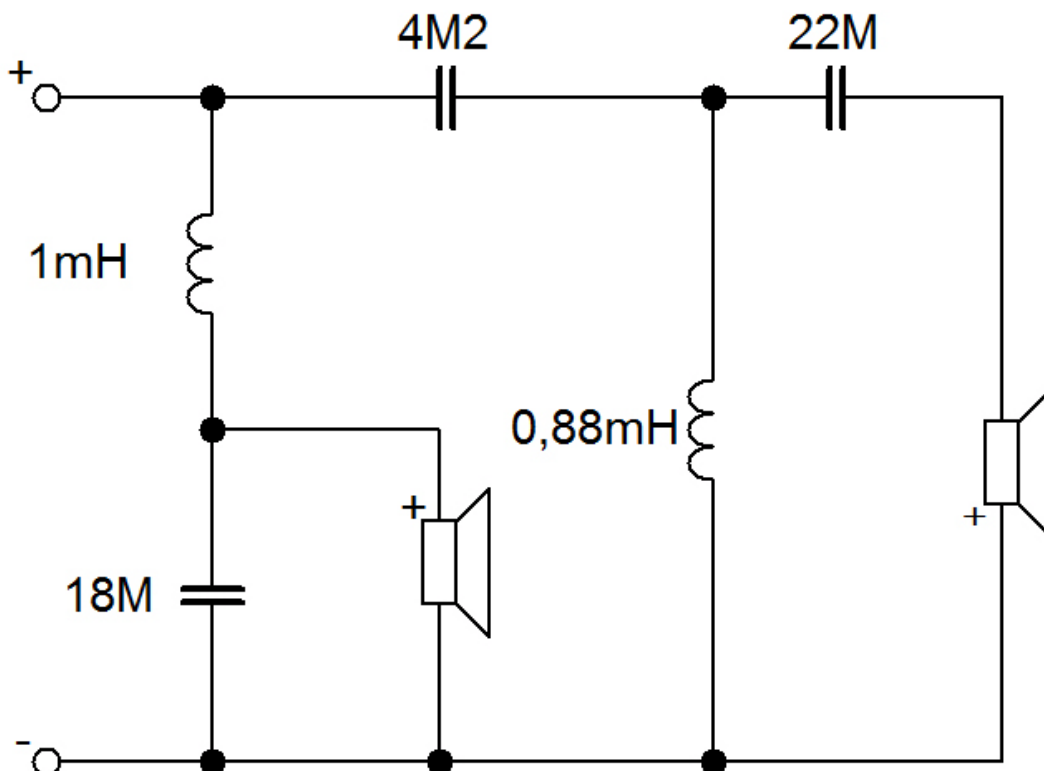
- **RCF ND3030T3**

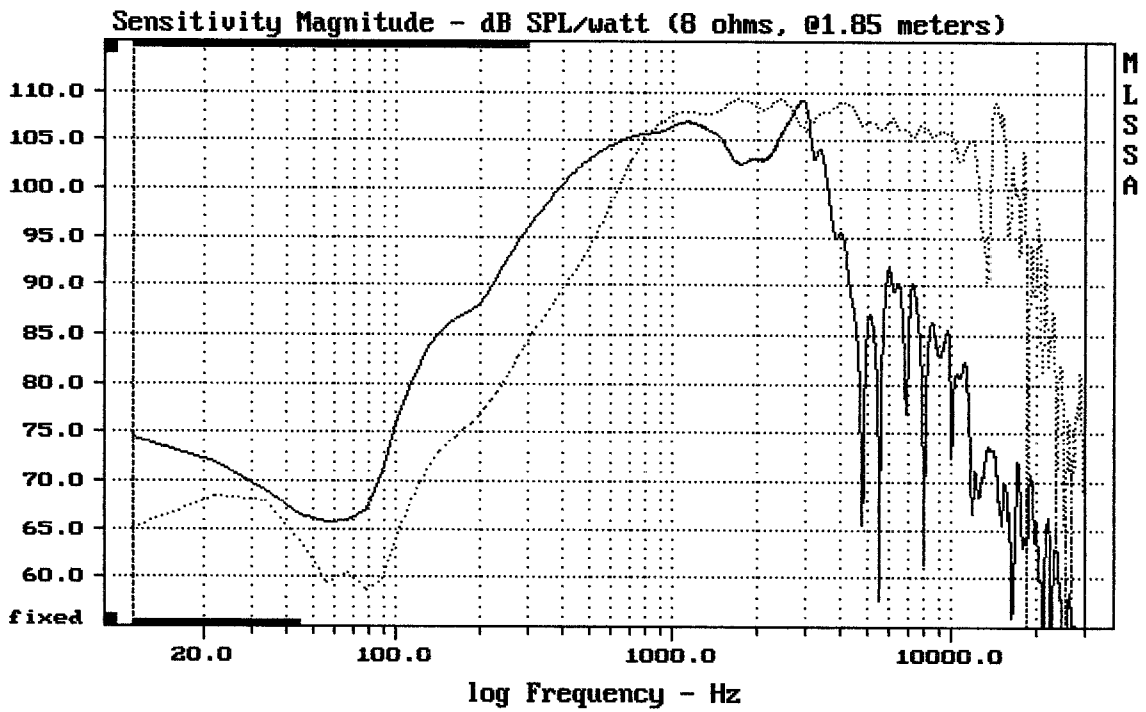
<http://eshop.prodance.cz/nd3030t3-8-ohm/d-79637/>

- **RCF HF94**

<http://eshop.prodance.cz/hf94/d-81664/>

Schéma výhybky:

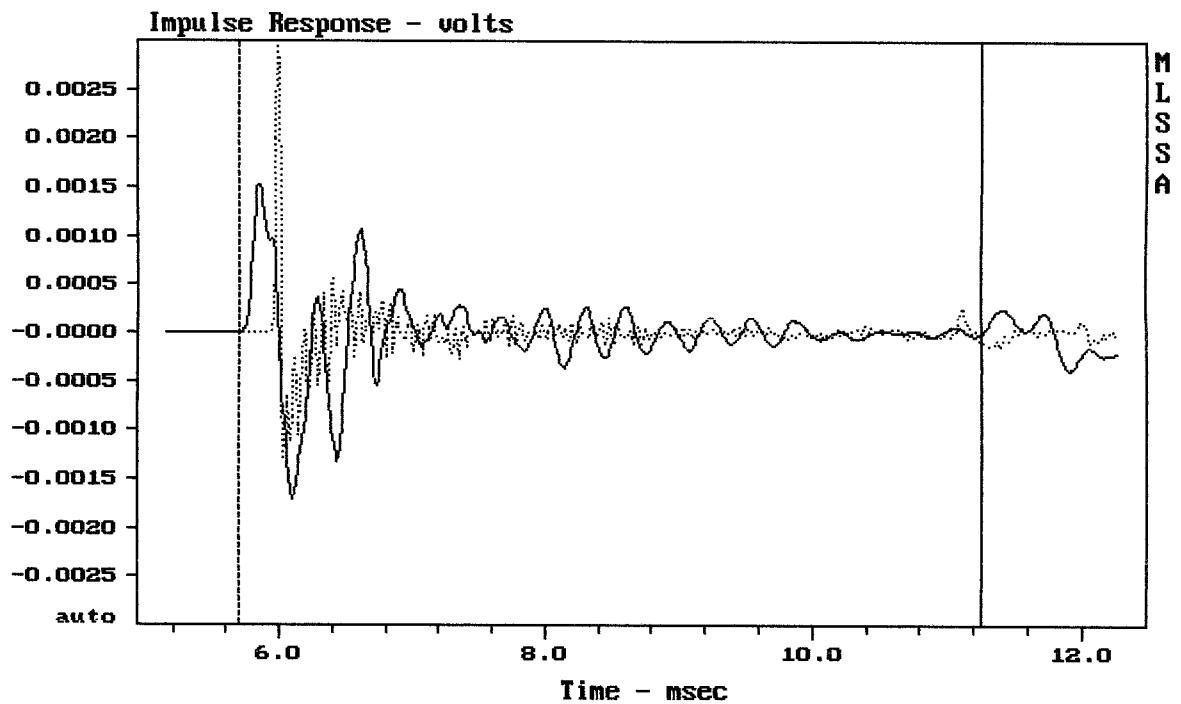




CURSOR: dy = 24.0969 x = 30007.1014 (2704)

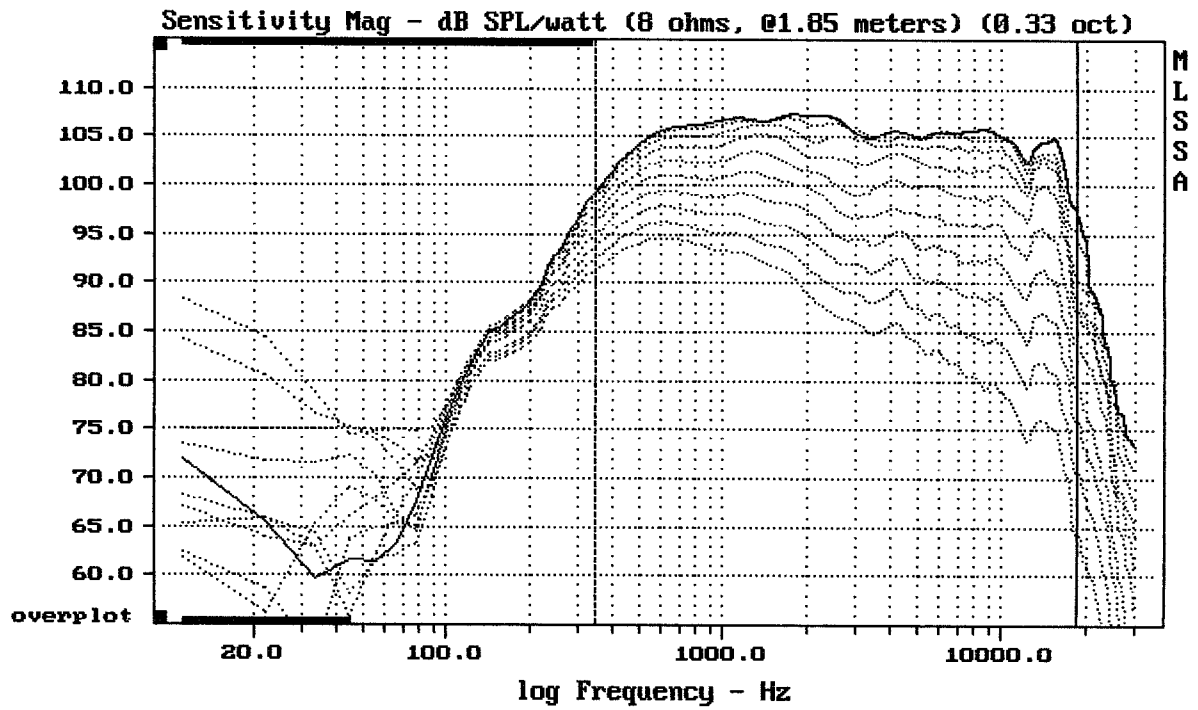
MR8N301 + H6000 + ND3030T3 + HF94

MLSSA: Frequency Domain



mean: 1.8e-006, rms: 0.000279, std: 0.000279, max: 0.003008, min: -0.001277

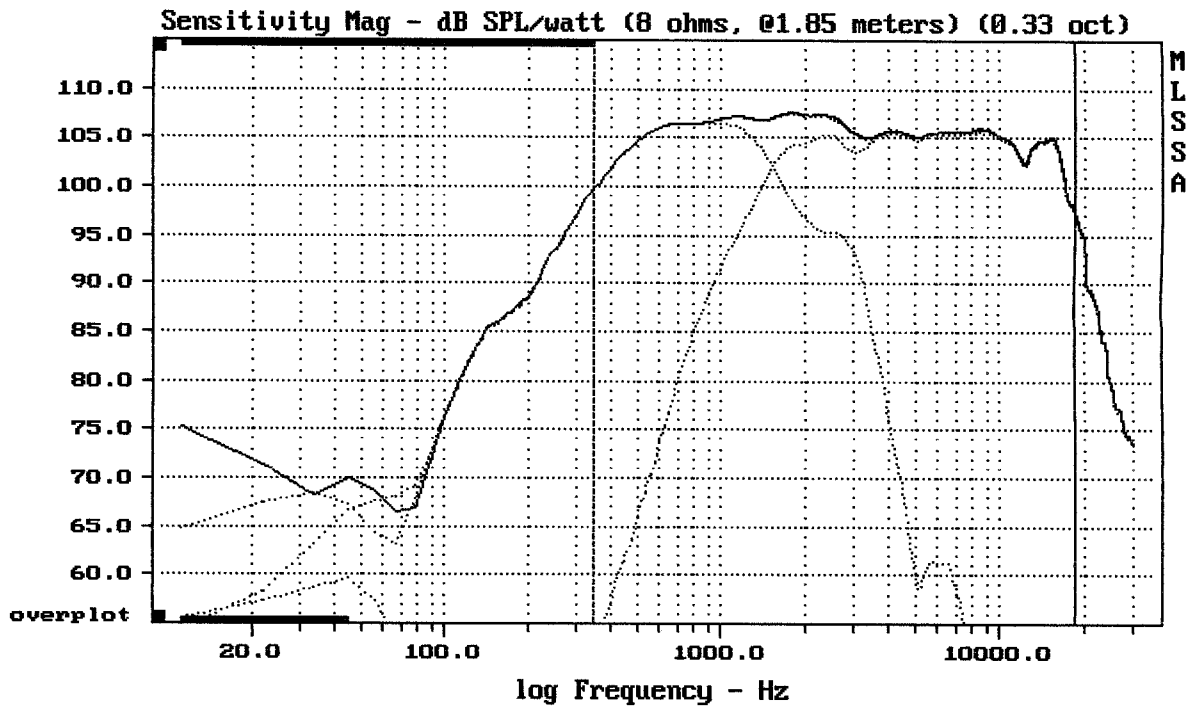
MR8N301 + H6000 + ND3030T3 + HF94



Overlay Compare: dev= +17/-8.7, std= 5.2, avg= -25

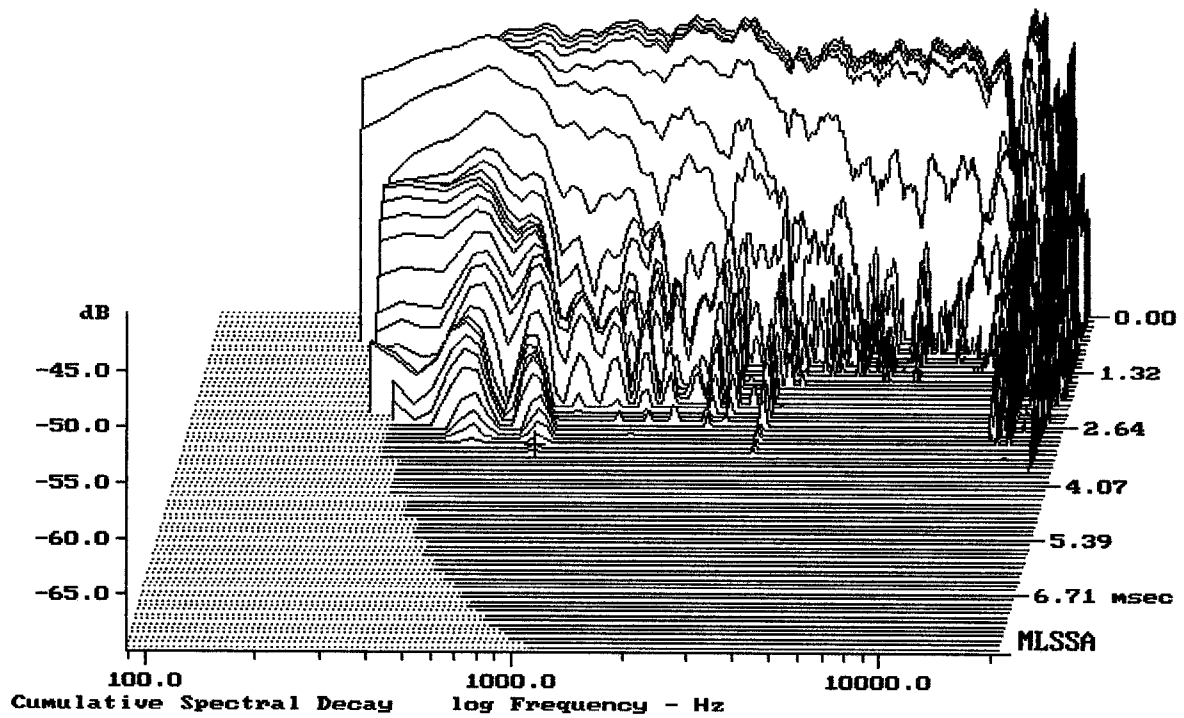
MR8N301 + H6000 + ND3030T3 + HF94

MLSSA: Frequency Domain



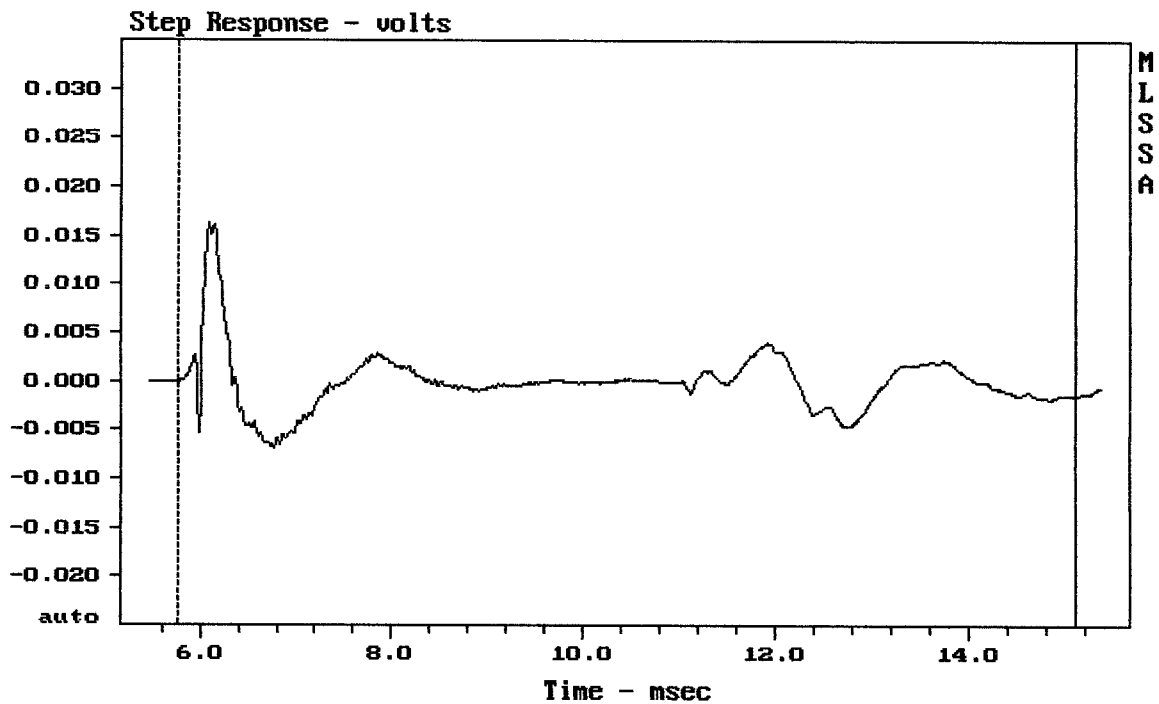
Level (344:18499 Hz) = 105.59 dB SPL/watt (8 ohms, @1.85 meters) (0.33 oct)

MR8N301 + H6000 + ND3030T3 + HF94



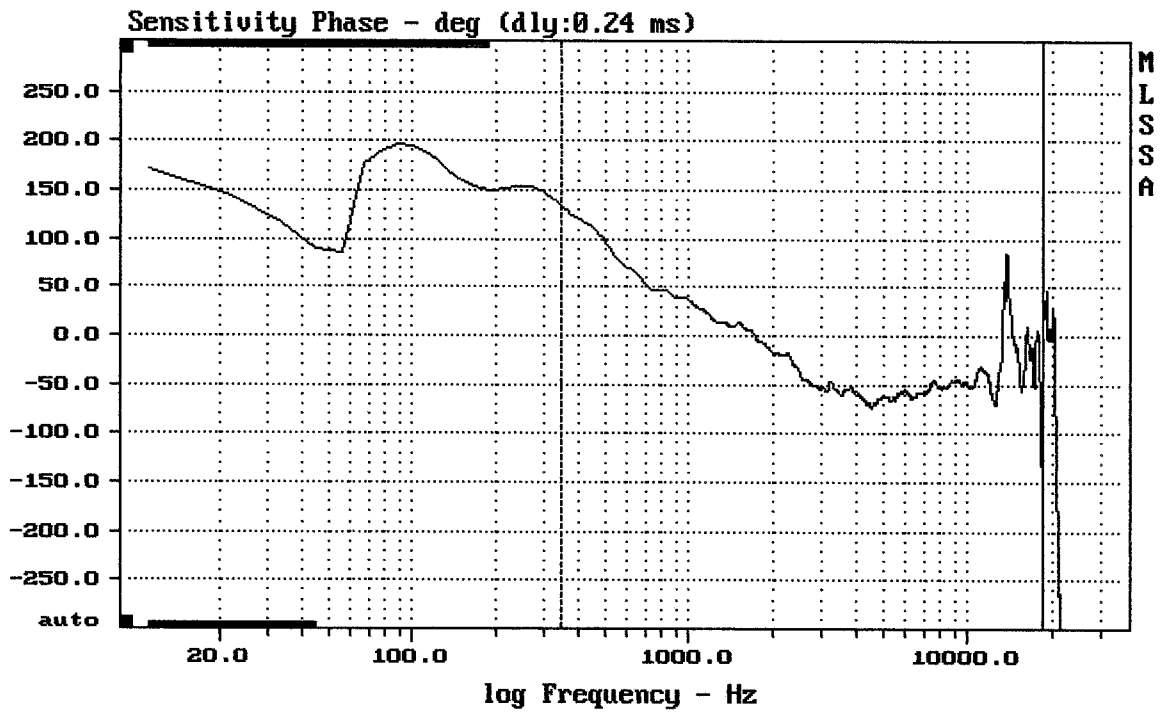
-69.66 dB, 799 Hz (18), 3.190 msec (30)

DTTO



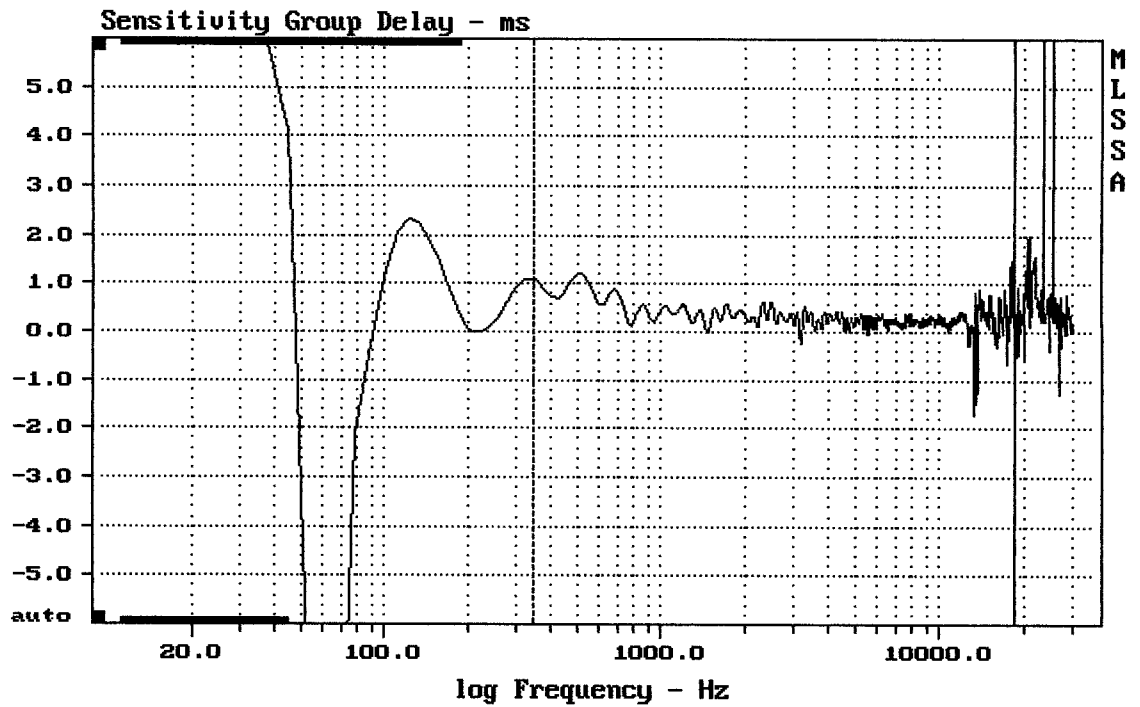
mean: -9.406e-005, rms: 0.002985, std: 0.002984, max: 0.01621, min: -0.006968

MR8N301 + H6000 + ND3030T3 + HF94

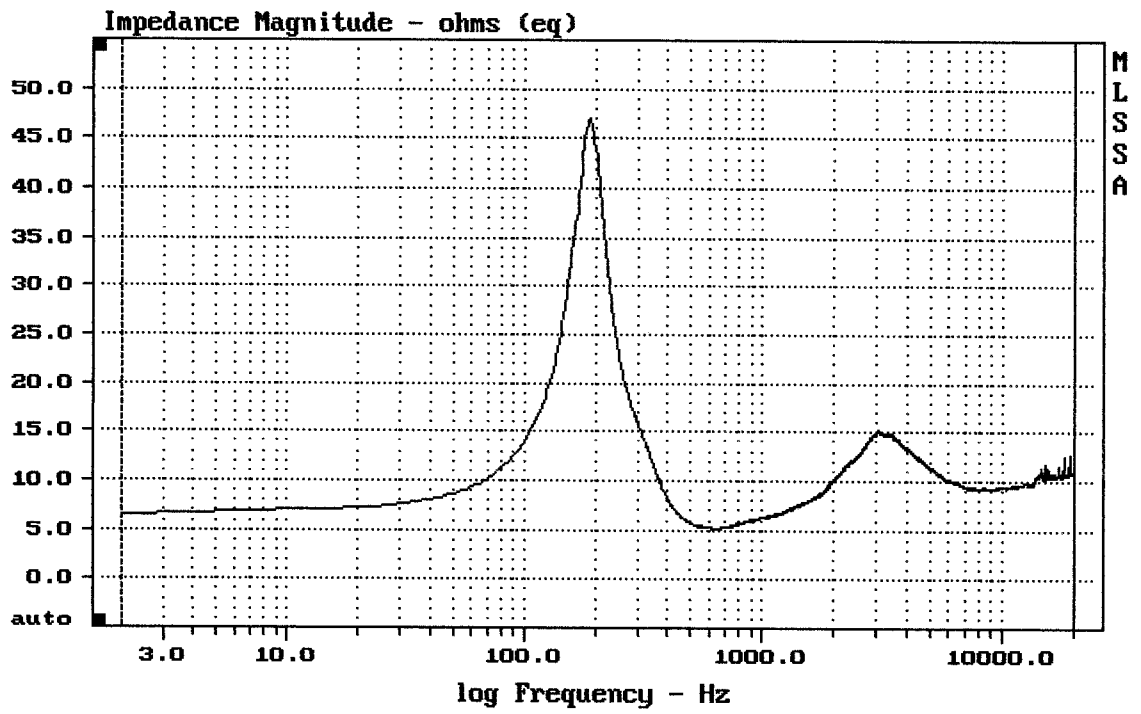


MR8N301 + H6000 + ND3030T3 + HF94

MLSSA: Frequency Domain



MR8N301 + H6000 + ND3030T3 + HF94



mean: 10.5, rms: 10.83, std: 2.643, max: 47, min: 5.121

MR0N301 + H6000 + ND3030T3 + HF94

MLSSA: Frequency Domain