

Sestava Selenium QS15P30 + Fane CD130 + HM17-25

Osazení:

- Selenium QS15P30 NL 8/Ohm

<http://eshop.prodance.cz/gs15p30-nl-8-ohm/d-95605/>

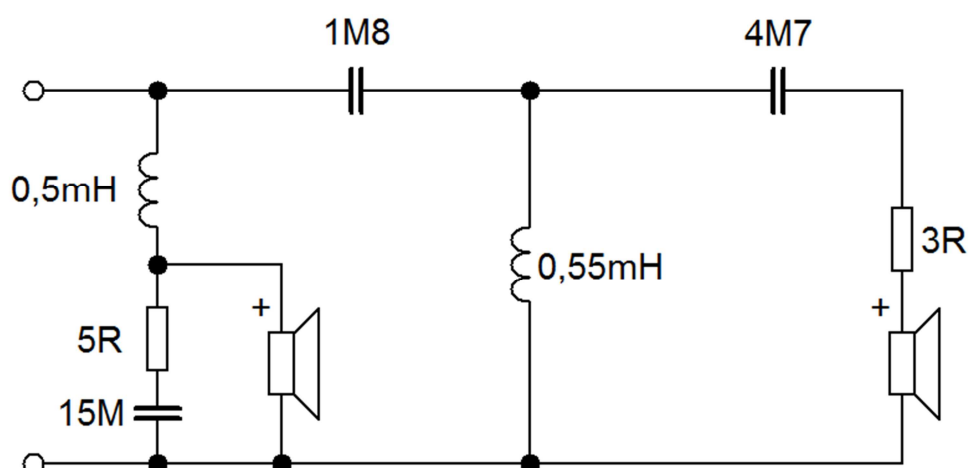
- Fane CD130 8/Ohm

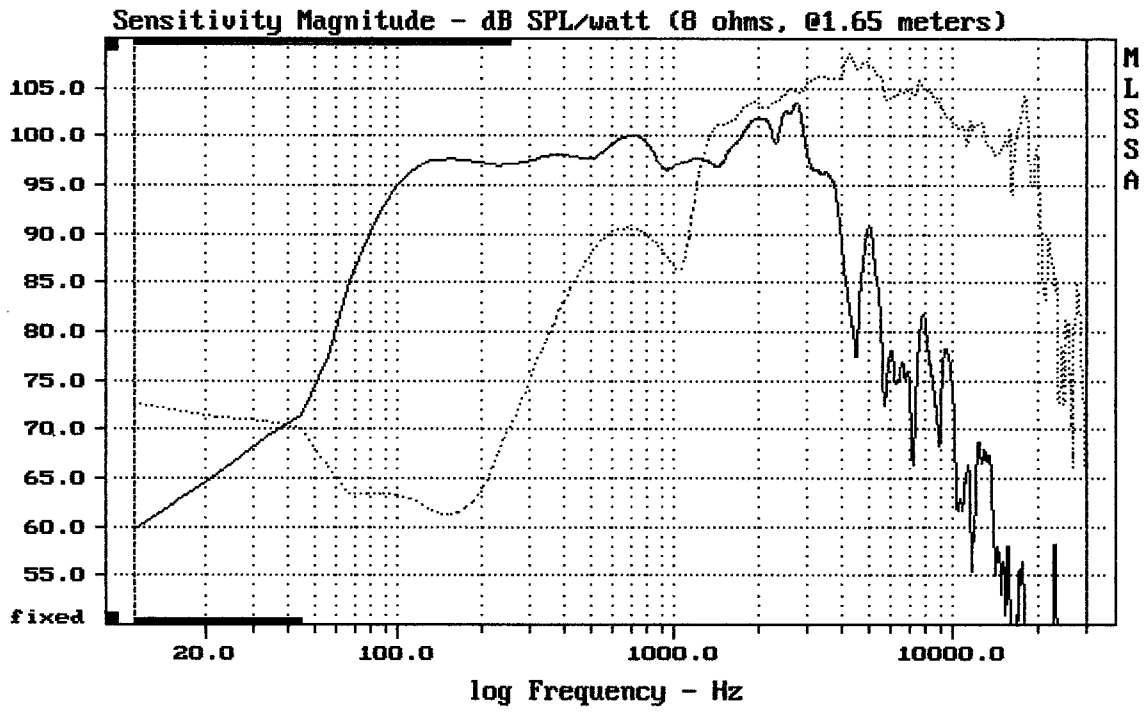
<http://eshop.prodance.cz/cd130-8-ohm/d-96203/>

- Selenium HM17-25

<http://eshop.prodance.cz/hm1725/d-89344/>

Schéma výhybky:

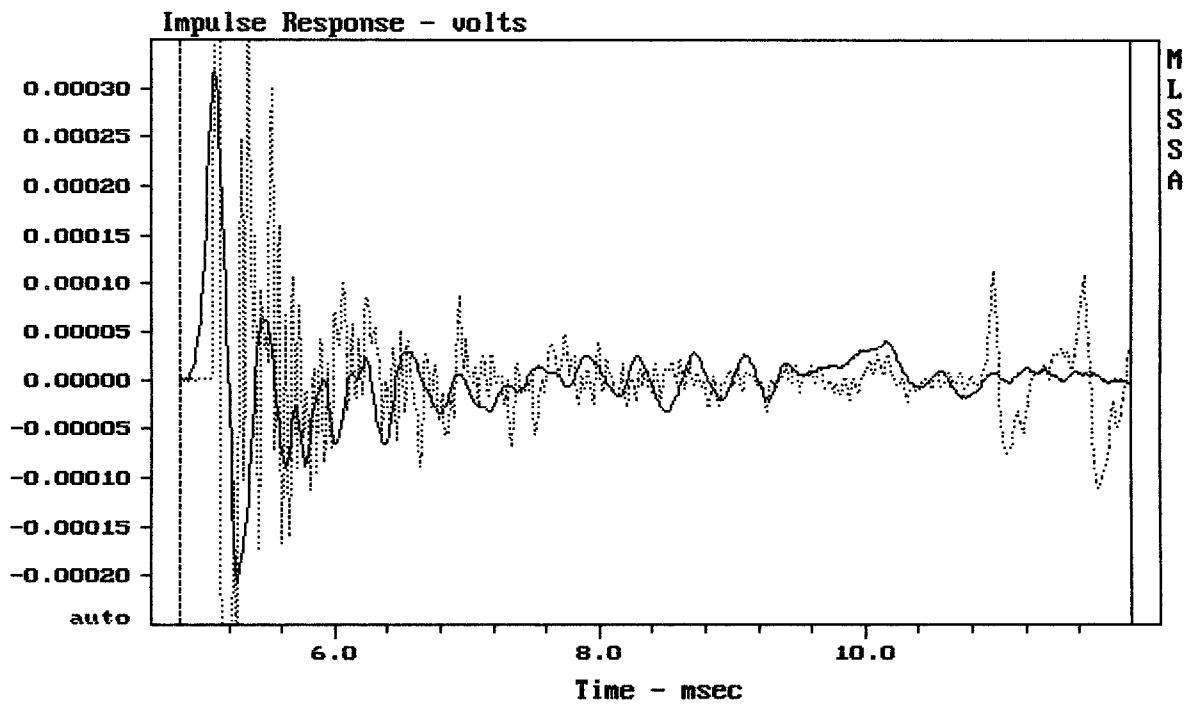




CURSOR: dy = 21.0656 x = 30007.1014 (2704)

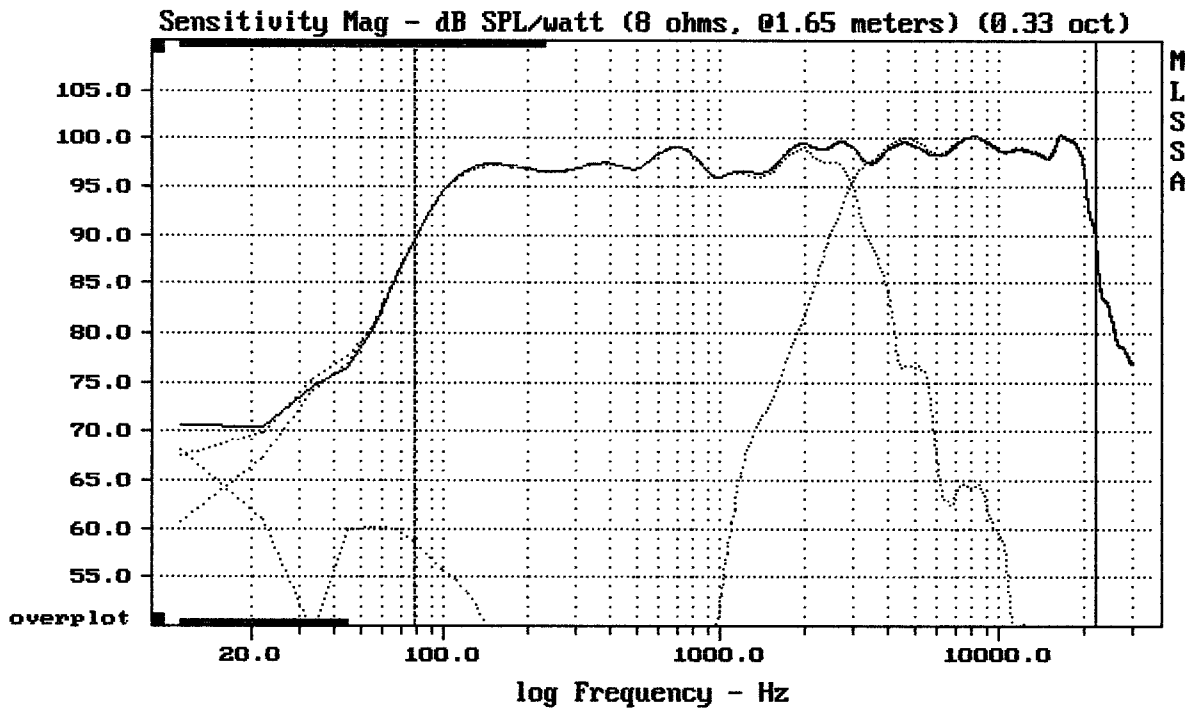
QS 15P30 + CD130 + HM17-25

MLSSA: Frequency Domain



mean: -7.735e-007, rms: 0.0001608, std: 0.0001608, max: 0.001866, min: -0.0013

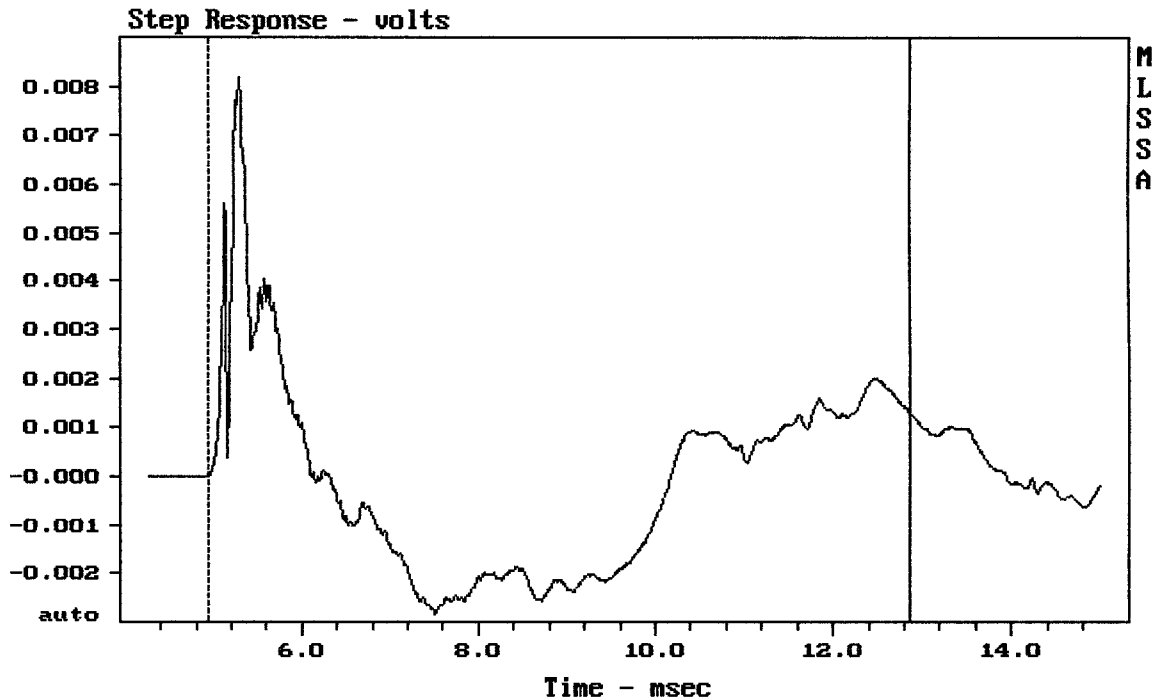
QS 15P30 + CD130 + HM17-25



Level (78:22306 Hz) = 97.89 dB SPL/watt (8 ohms, @1.65 meters) (0.33 oct)

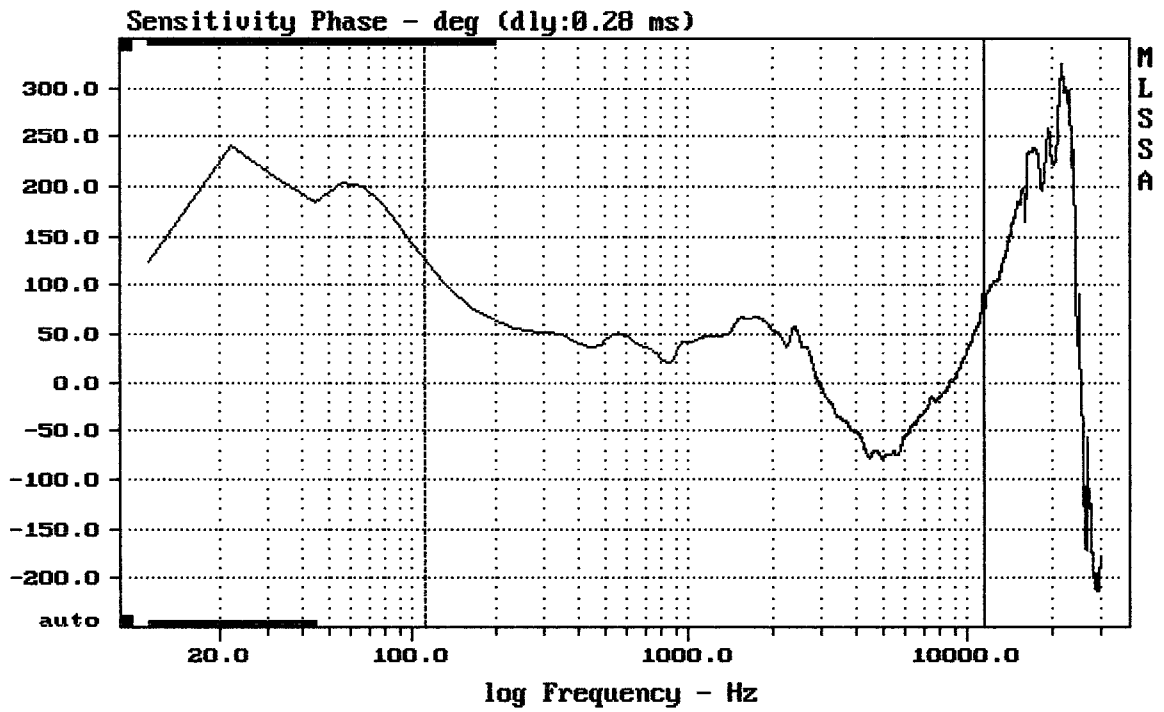
QS 15P30 + CD130 + HM17-25

MLSSA: Frequency Domain



mean: $-9.353e-005$, rms: 0.00204, std: 0.002038, max: 0.008179, min: -0.002825

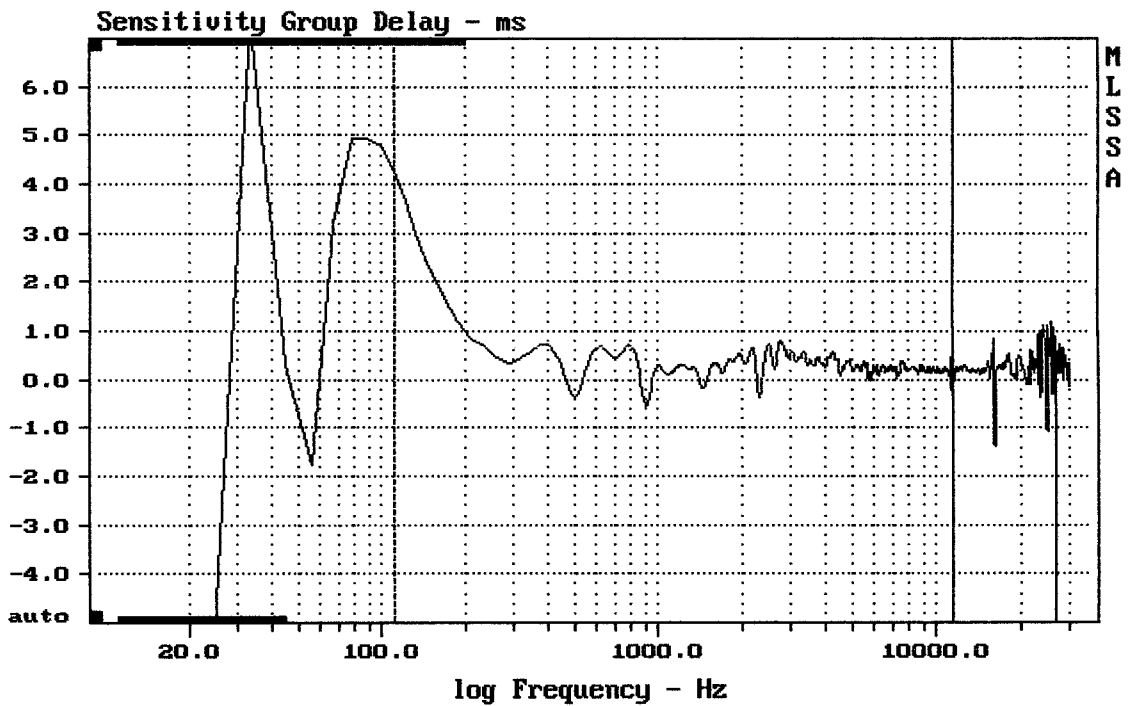
QS 15P30 + CD130 + HM17-25



mean: -0.8858, rms: 47.77, std: 47.77, max: 127, min: -78.23

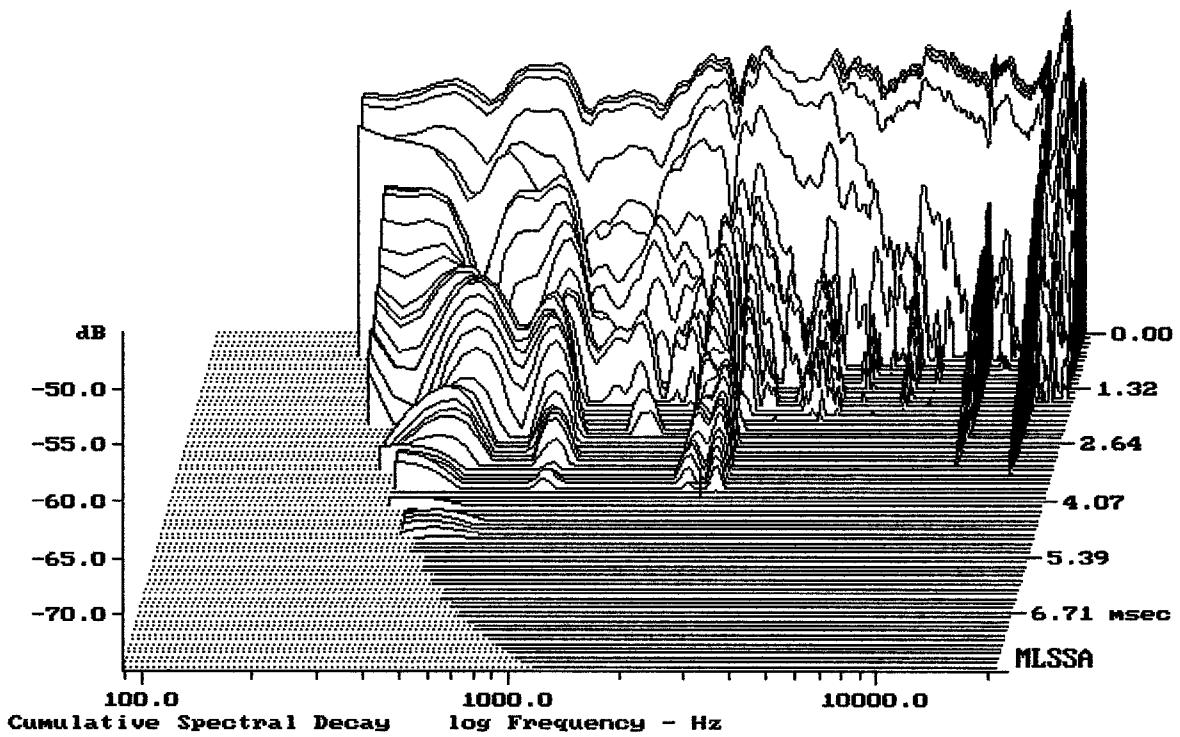
QS 15P30 + CD130 + HM17-25

MLSSA: Frequency Domain



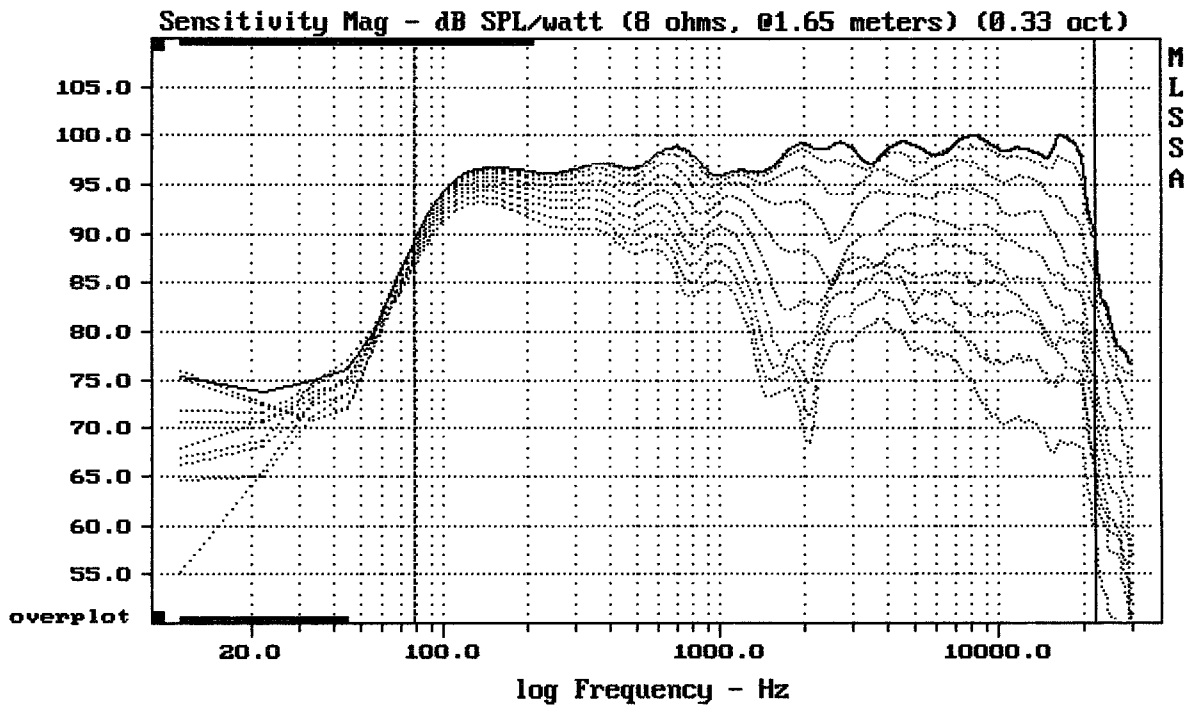
mean: 0.289, rms: 0.4035, std: 0.2816, max: 4.285, min: -0.5663

QS 15P30 + CD130 + HM17-25



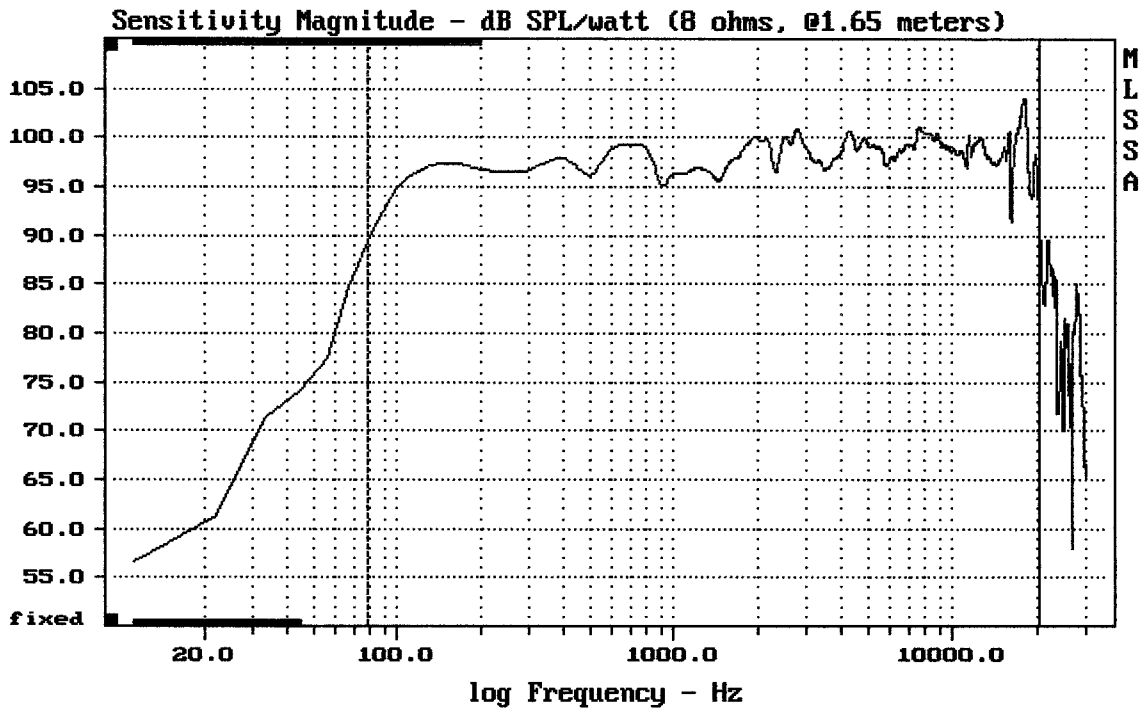
-75.00 dB, 2397 Hz (54), 3.630 msec (34)

DTTO



Overlay Compare: dev= +23/-6.2, std= 5.7, avg= -26

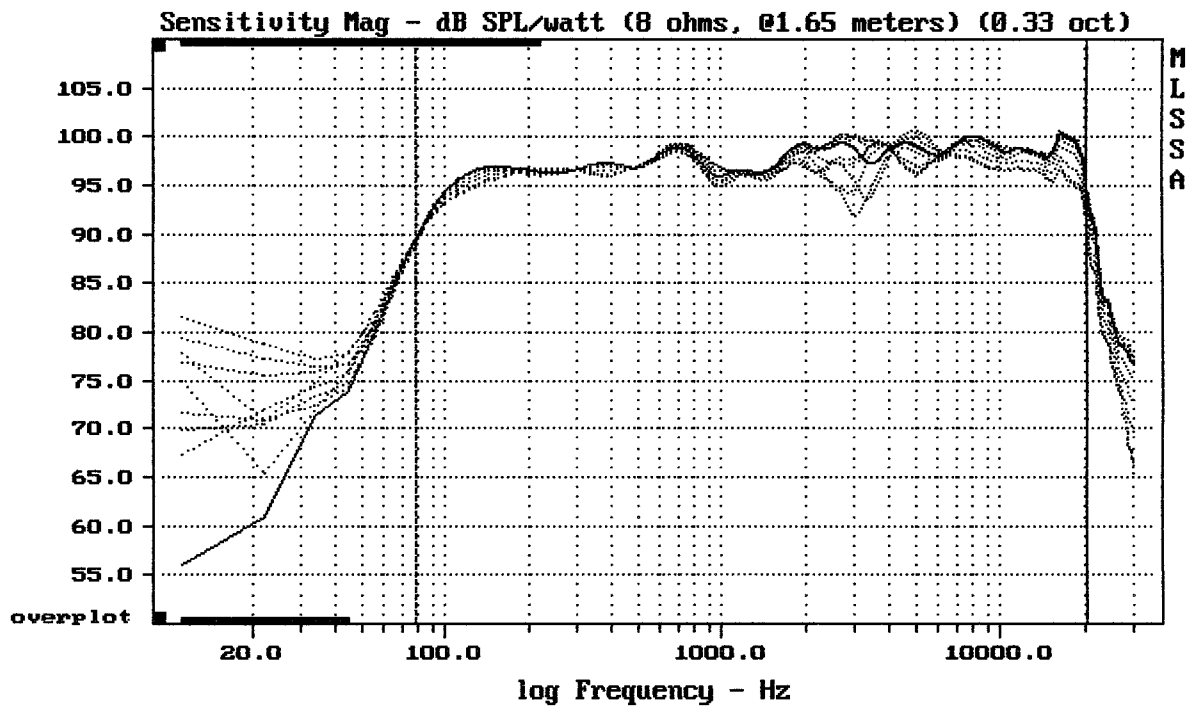
QS 15P30 + CD130 + HM17-25



mean: 98.81, rms: 99.02, std: 1.76, max: 104.03, min: 89.34

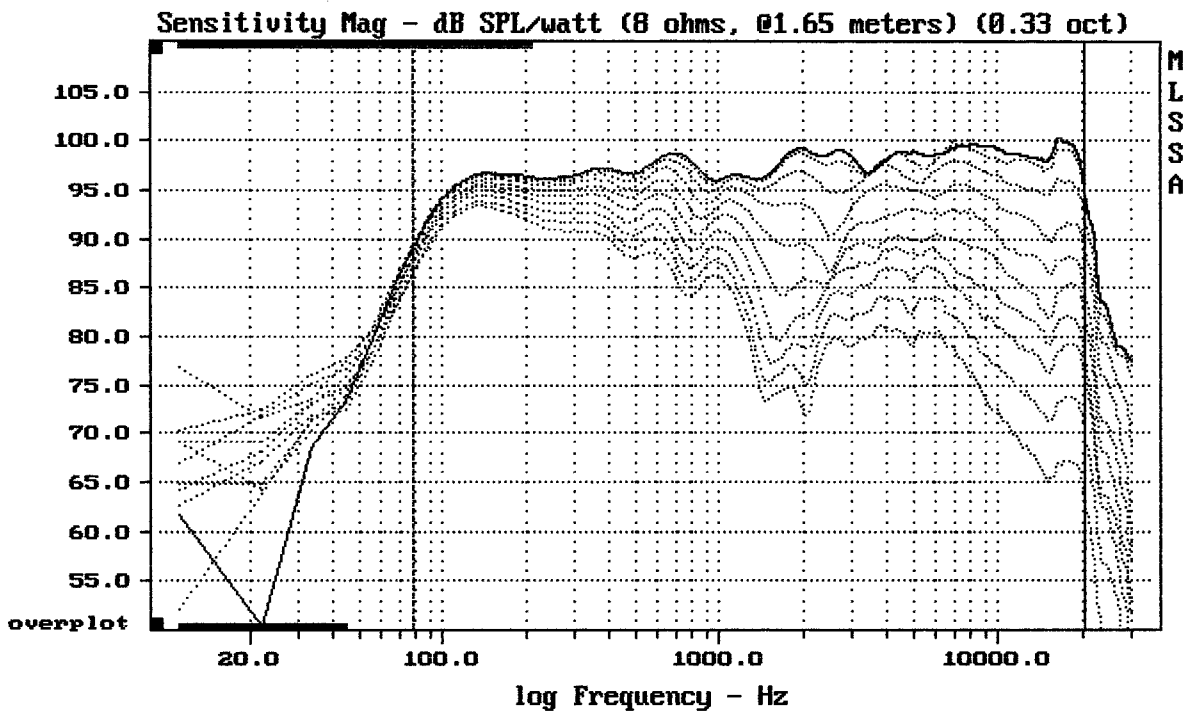
QS 15P30 + CD130 + HM17-25

MLSSA: Frequency Domain



mean: 96.63, rms: 96.72, std: 1.18, max: 99.40, min: 89.53

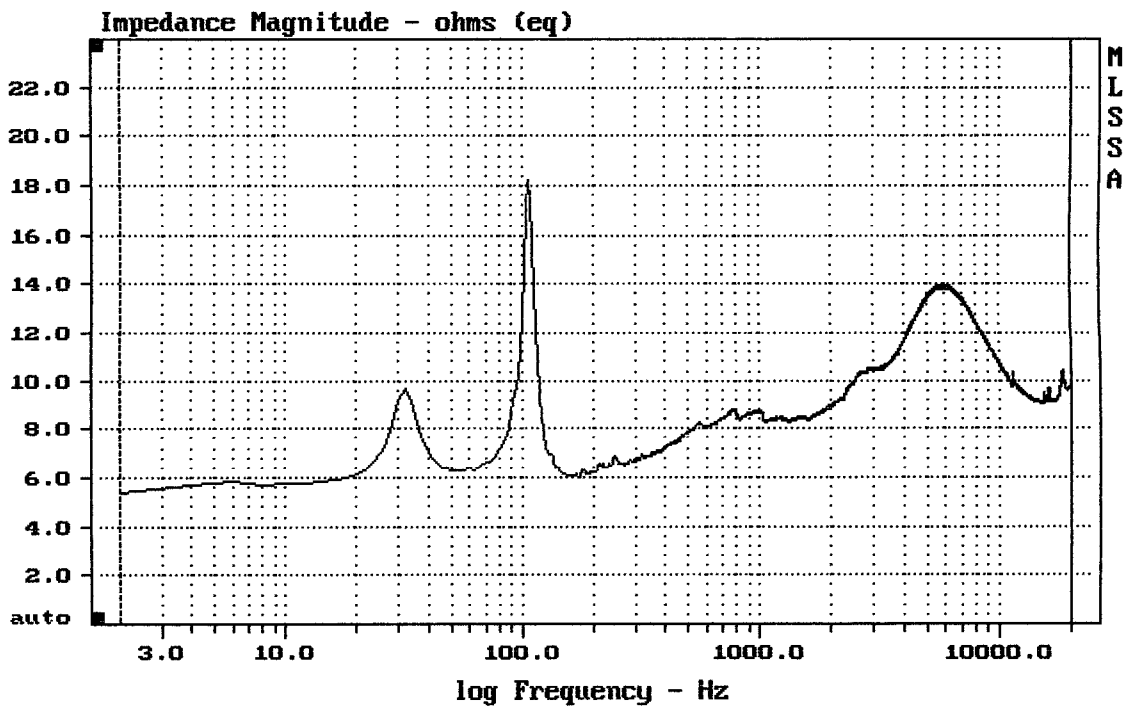
QS 15P30 + CD130 + HM17-25



Overlay Compare: dev= +23/-7.9, std= 6.9, avg= -26

QS 15P30 + CD130 + HM17-25

MLSSA: Frequency Domain



mean: 10.44, rms: 10.58, std: 1.718, max: 18.25, min: 5.409

QS 15P30 + CD130 + HM17-25