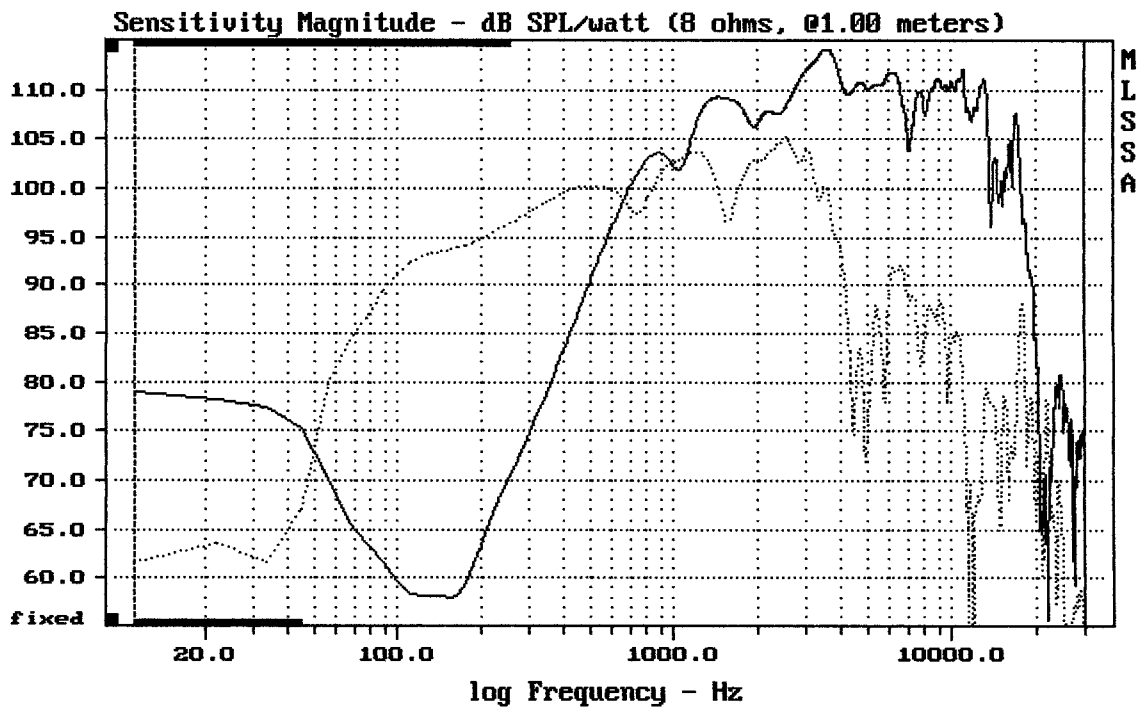


mean: 1.768e-006, rms: 0.0002456, std: 0.0002456, max: 0.0012, min: -0.001342

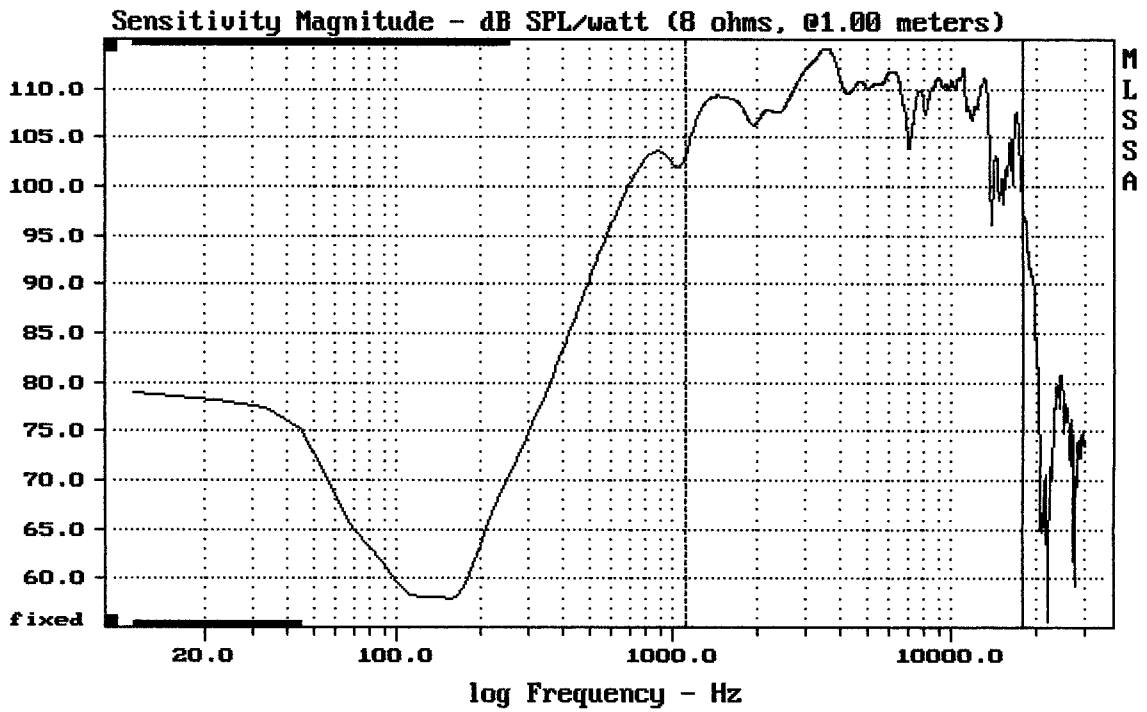
CX12N251

MLSSA: Time Domain



CURSOR: dy = -21.1364 x = 30007.1014 (2704)

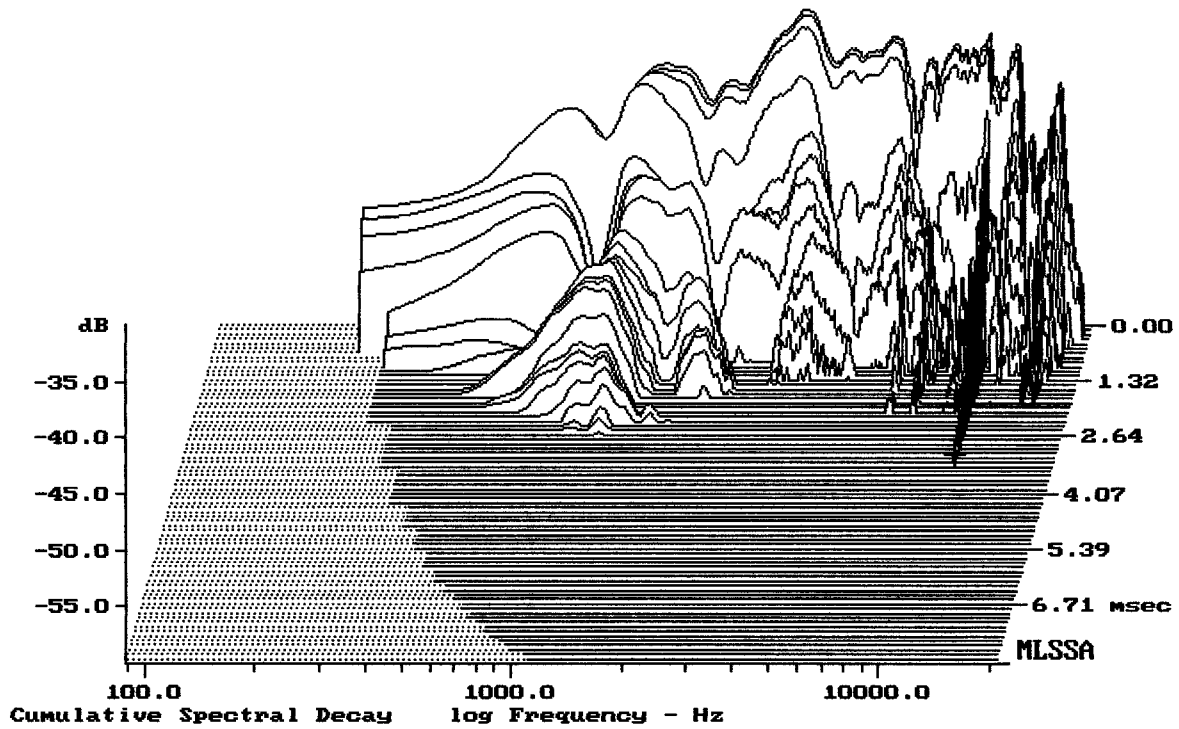
CX12N251



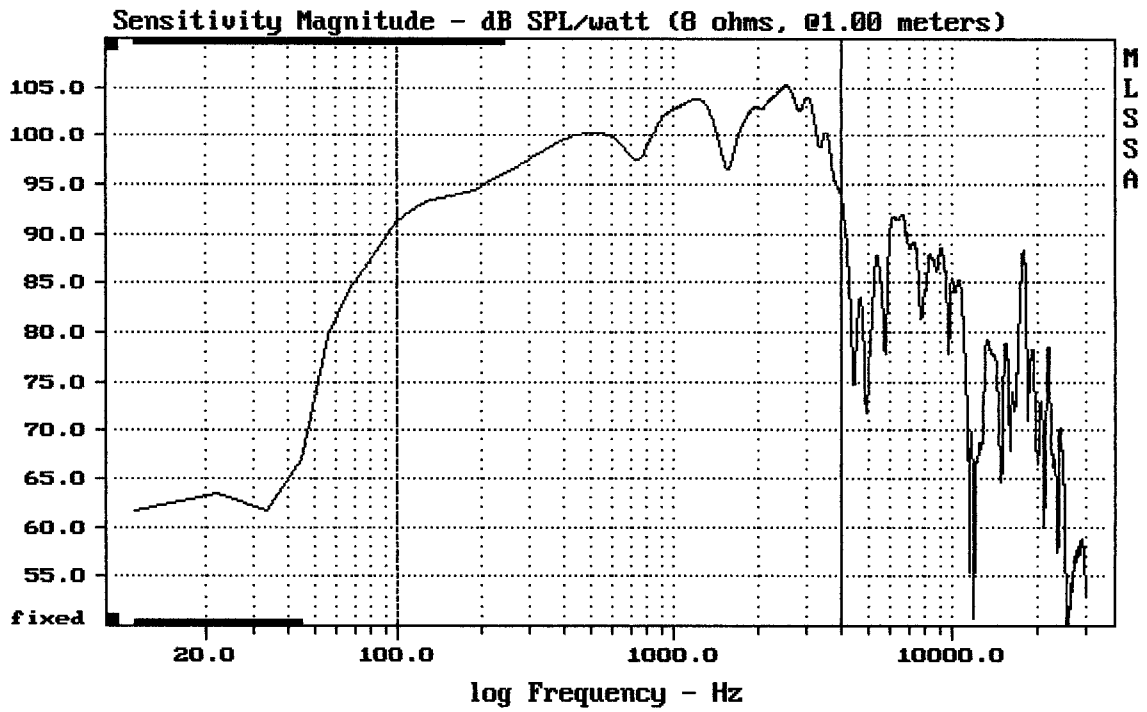
Level (1110:18000 Hz) = 109.63 dB SPL/watt (8 ohms, @1.00 meters)

CX12N251

MLSSA: Frequency Domain



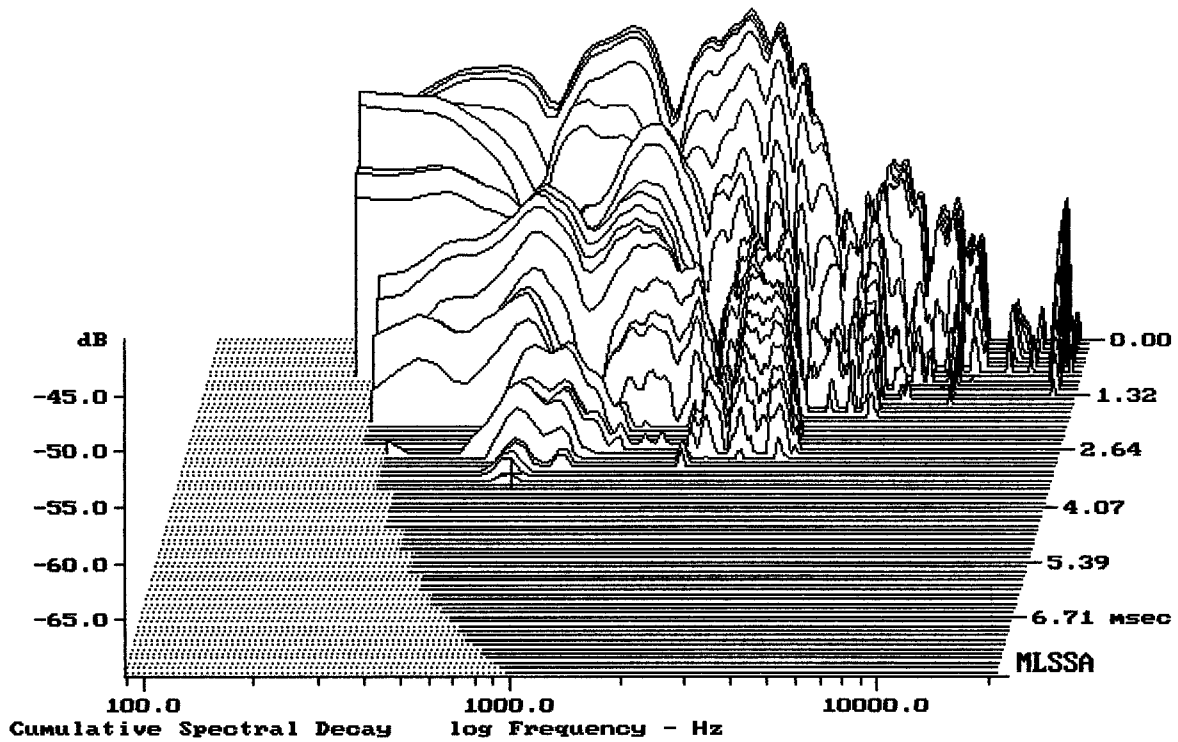
-59.26 dB, 11230 Hz (253), 3.300 msec (31)



Level (100:4006 Hz) = 100.14 dB SPL/watt (8 ohms, @1.00 meters)

CX12N251

MLSSA: Frequency Domain



-69.41 dB, 710 Hz (16), 3.410 msec (32)

Measured Data

QC Limits

Line	Parameter	Value	Units
1	RMSE-free	2.29	Ohms
2	Fs	61.24	Hz
3	Re	5.12	Ohms[dc]
4	Res	119.48	Ohms
5	Qms	7.01	
6	Qes	0.30	
7	Qts	0.29	
8	L1	0.25	mH
9	L2	0.76	mH
10	R2	4.19	Ohms
11	RMSE-load	1.48	Ohms
12	Vas(Sd)	72.39	liters
13	Mms	32.76	grams
14	Cms	206	μ M/Newton
15	B1	14.65	Tesla-M
16	SPLref(Sd)	99.3	dB[Re]
17	Rub-index	0.34	

Method: Mass-loaded (40.00 grams)

Area (Sd): 500.00 sq cm

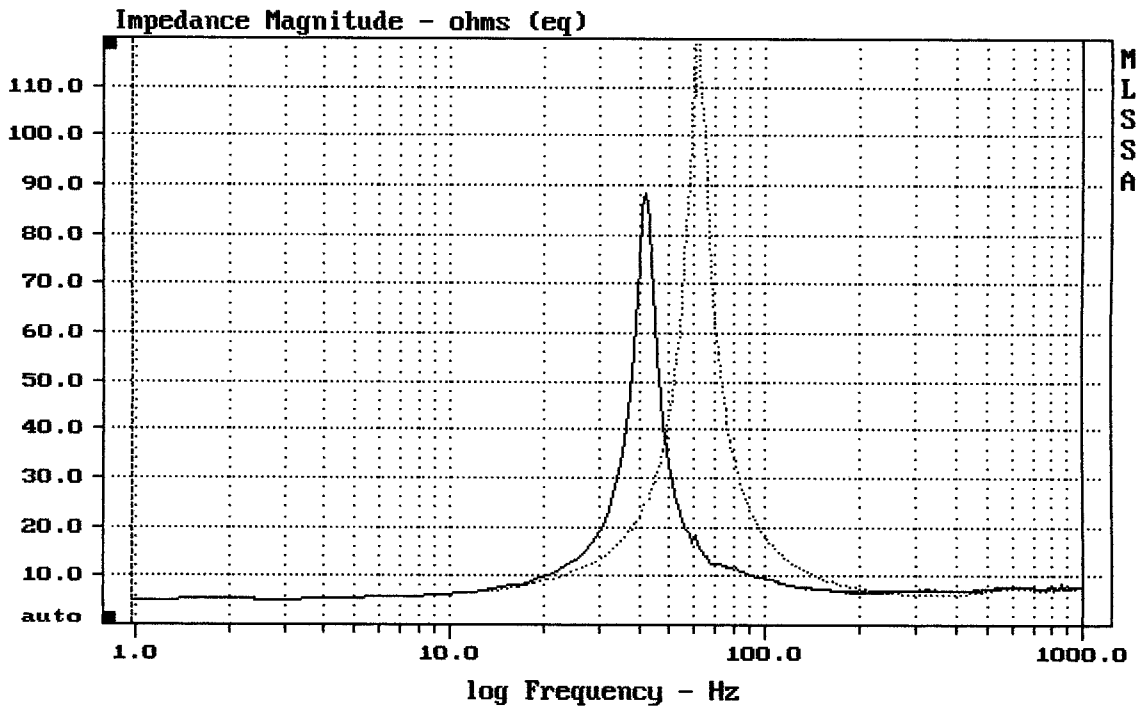
DCR mode: Measure (-0.07 ohms)

QC file: CLOSED

Analysis successful. Shift in Fs = -31.8% (-20% to -50% is recommended).

CX12N251

MLSSA: Parameters



mean: 9.977, rms: 15.99, std: 12.5, max: 158.7, min: 5.174

MLSSA: Frequency Domain