

MLSSA SPO 4.0D #960903-3057-3075

Measured Data

QC Limits

Line	Parameter	Value	Units
1	RMSE-free	0.56	Ohms
2	Fs	48.21	Hz
3	Re	4.91	Ohms[dc]
4	Res	102.35	Ohms
5	Qms	9.02	
6	Qes	0.43	
7	Qts	0.41	
8	L1	0.89	mH
9	L2	1.92	mH
10	R2	6.69	Ohms
11	RMSE-load	0.86	Ohms
12	Vas(Sd)	169.18	liters
13	Mms	119.66	grams
14	Cms	91	$\mu\text{M}/\text{Newton}$
15	B1	20.28	Tesla-M
16	SPLref(Sd)	98.2	dB[Re]
17	Rub-index	0.01	

Method: Mass-loaded (120.00 grams)

Area (Sd): 1150.00 sq cm

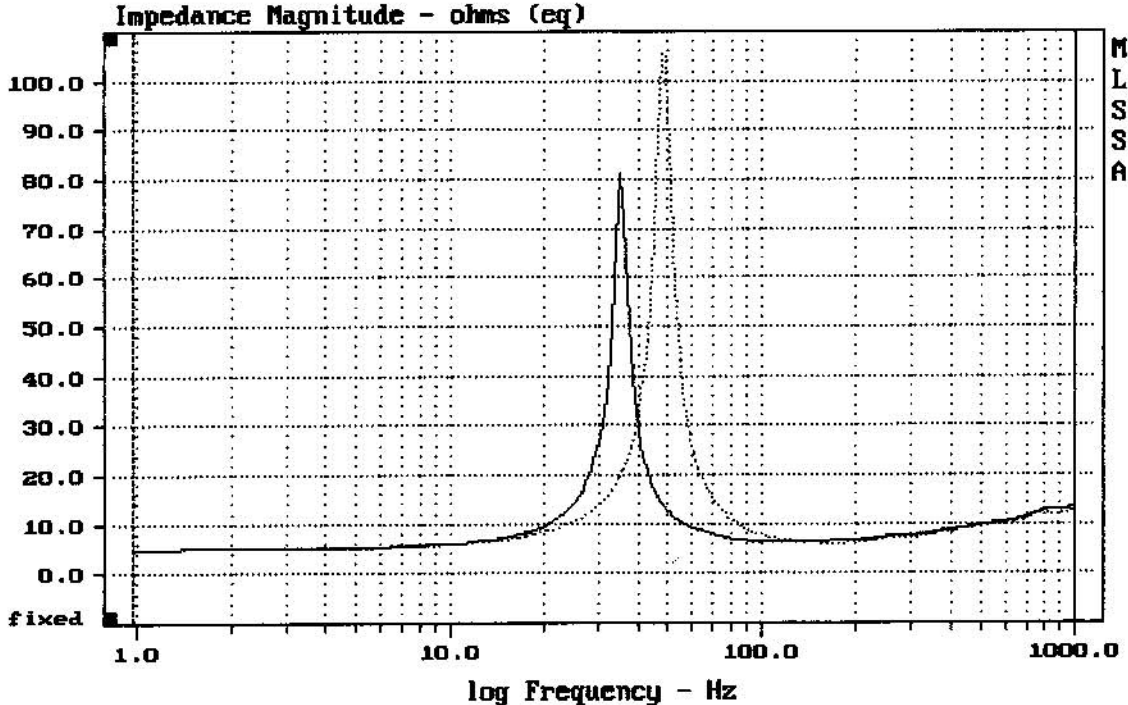
DCR mode: Measure (-0.06 ohms)

QC file: CLOSED

Analysis successful. Shift in Fs = -27.0% (-20% to -50% is recommended).

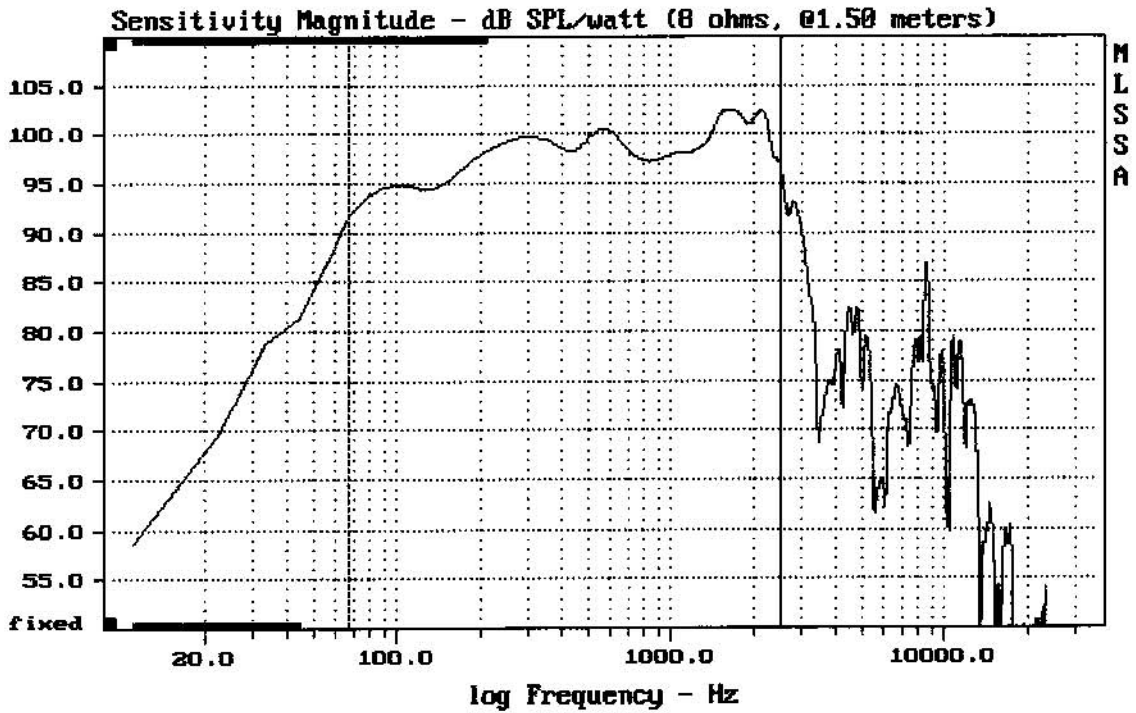
RCF L18S800

MLSSA: Parameters



mean: 10.79, rms: 13.51, std: 8.131, max: 105.7, min: 4.963

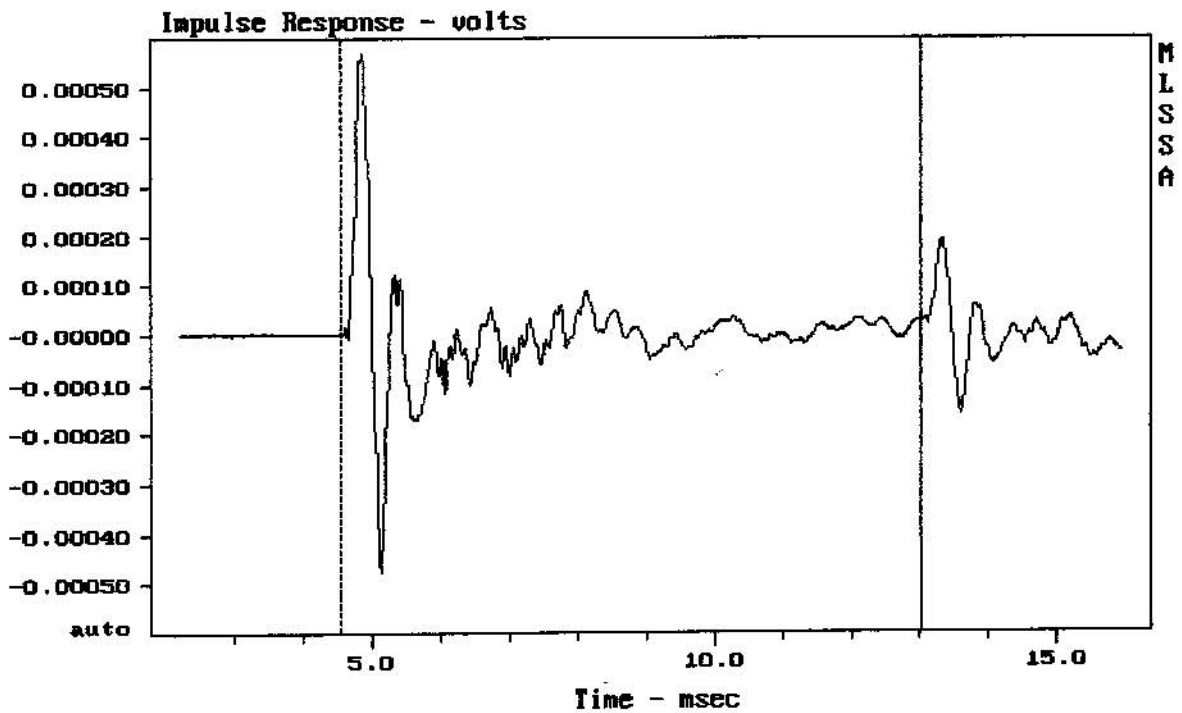
MLSSA: Frequency Domain



Level (67:2497 Hz) = 98.55 dB SPL/watt (8 ohms, @1.50 meters)

L18S800

MLSSA: Frequency Domain



mean: 1.815e-007, rms: 0.0001004, std: 0.0001004, max: 0.0005697, min: -0.0004

L18S800