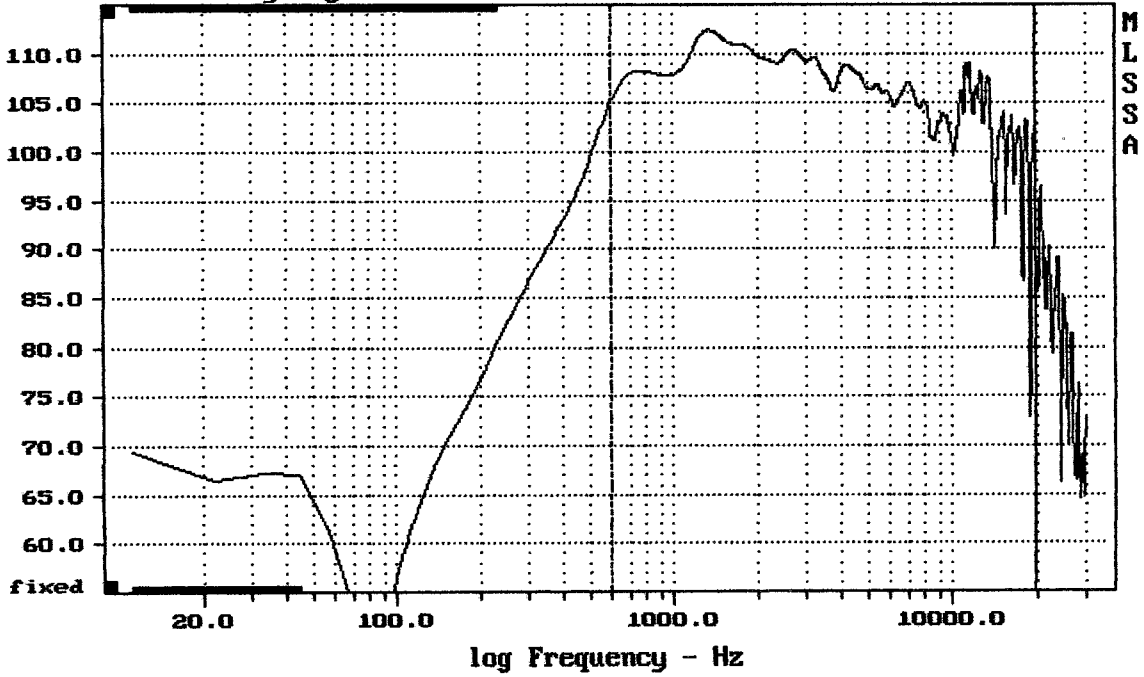


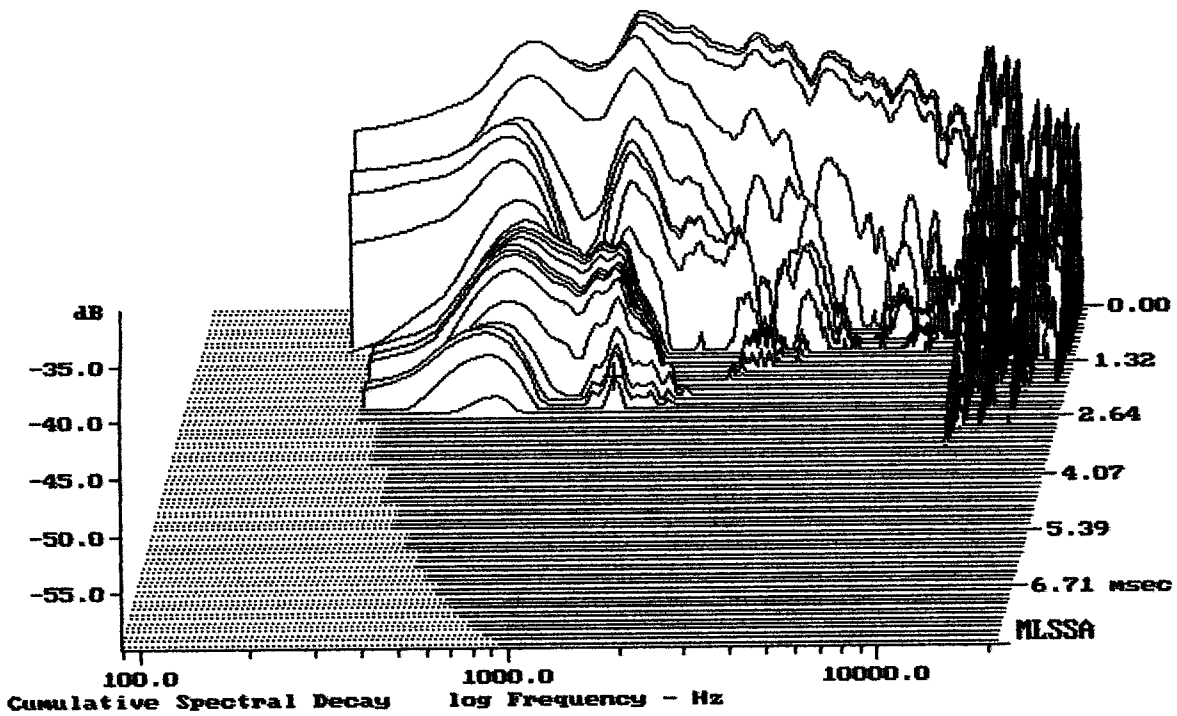
Sensitivity Magnitude - dB SPL/watt (8 ohms, @1.00 meters)



Level (599:19889 Hz) = 108.10 dB SPL/watt (8 ohms, @1.00 meters)

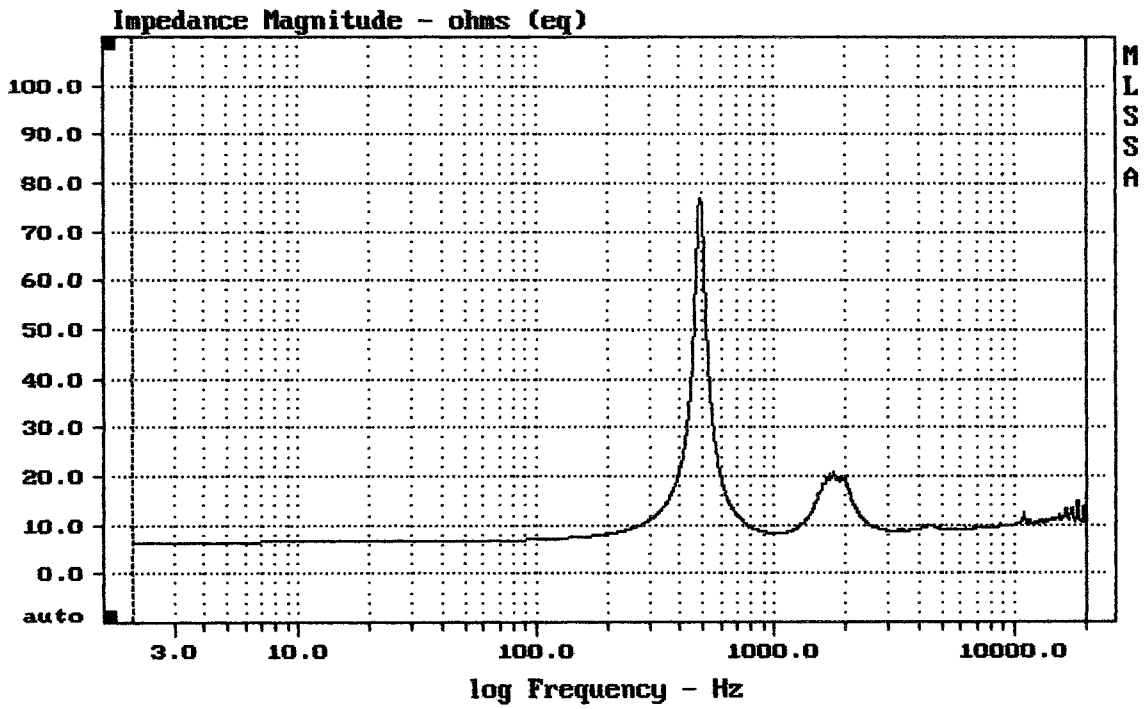
ND950-1.4 + ME90

MLSSA: Frequency Domain



-57.14 dB, 1287 Hz (29), 2.420 msec (23)

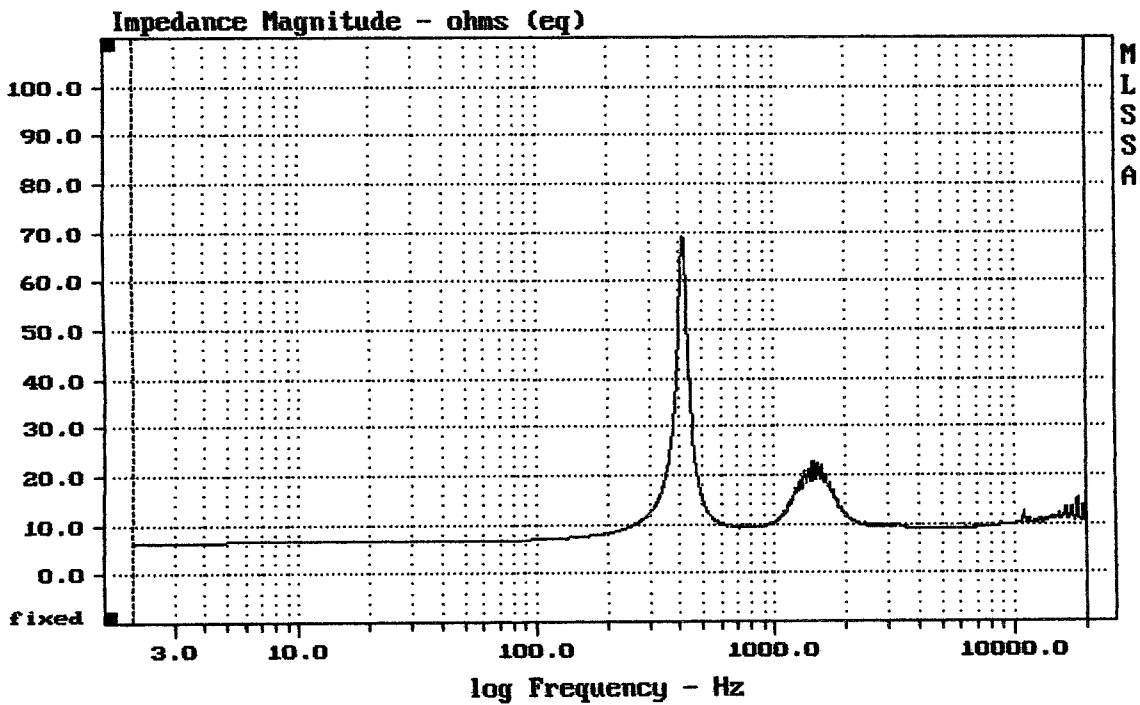
DTTO



mean: 11.02, rms: 11.74, std: 4.047, max: 77, min: 6.346

ND950-1.4

MLSSA: Frequency Domain



mean: 10.91, rms: 11.38, std: 3.228, max: 69.13, min: 6.217

DTTO + ME90

MLSSA: Frequency Domain