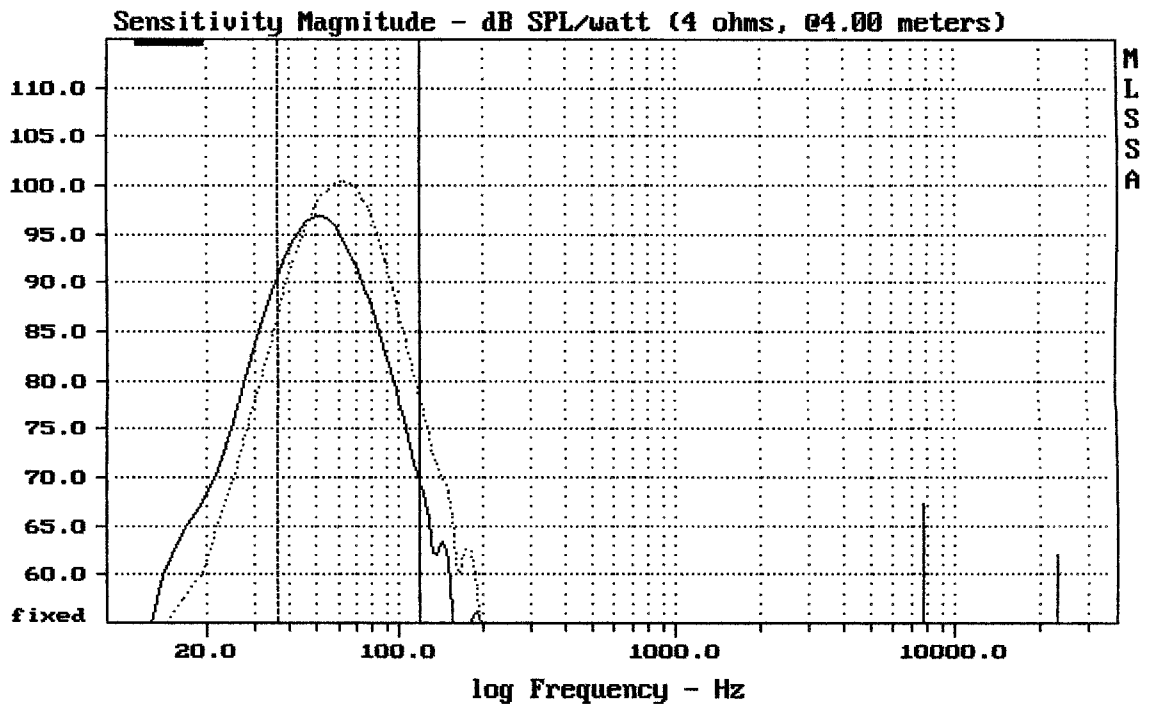


CURSOR:  $dy = 2.30175$   $x = 91.5527$  (33)

RCF SUB 8005-AS LPF120Hz punch ... / deep ---

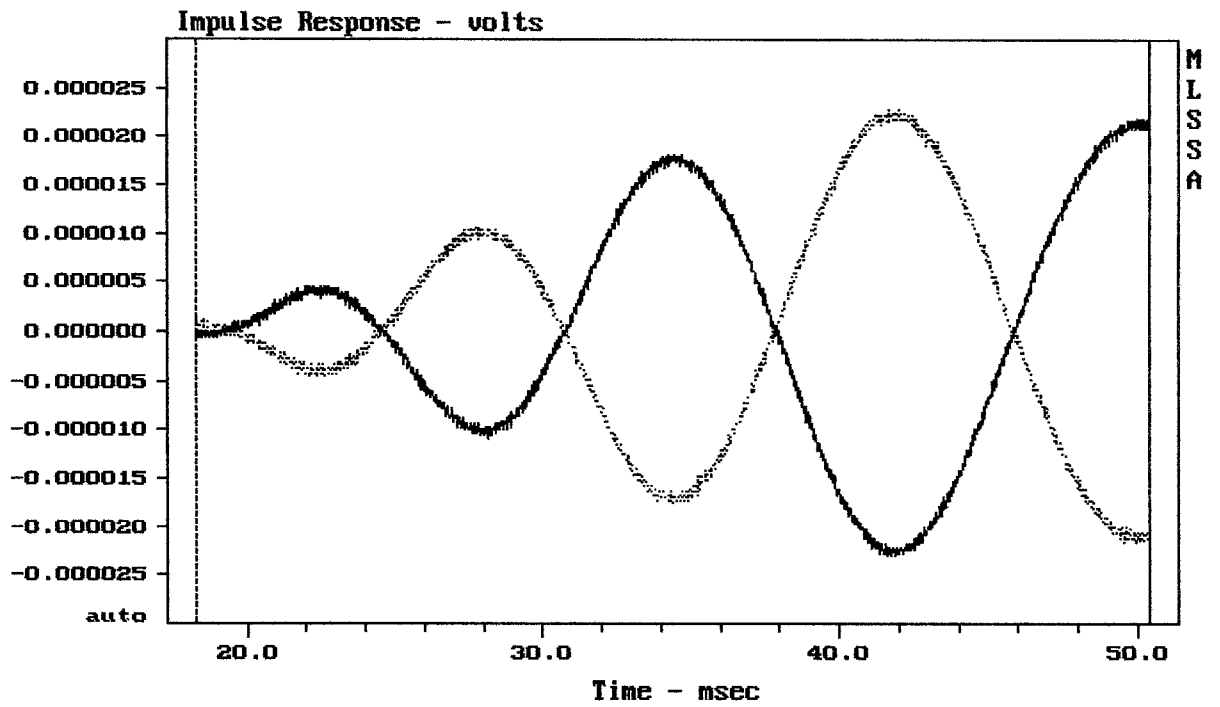
MLSSA: Frequency Domain



mean: 94.49, rms: 95.95, std: 4.25, max: 100.31, min: 78.12

RCF SUB 8005-AS deep LPF 120Hz .... / 90Hz -----

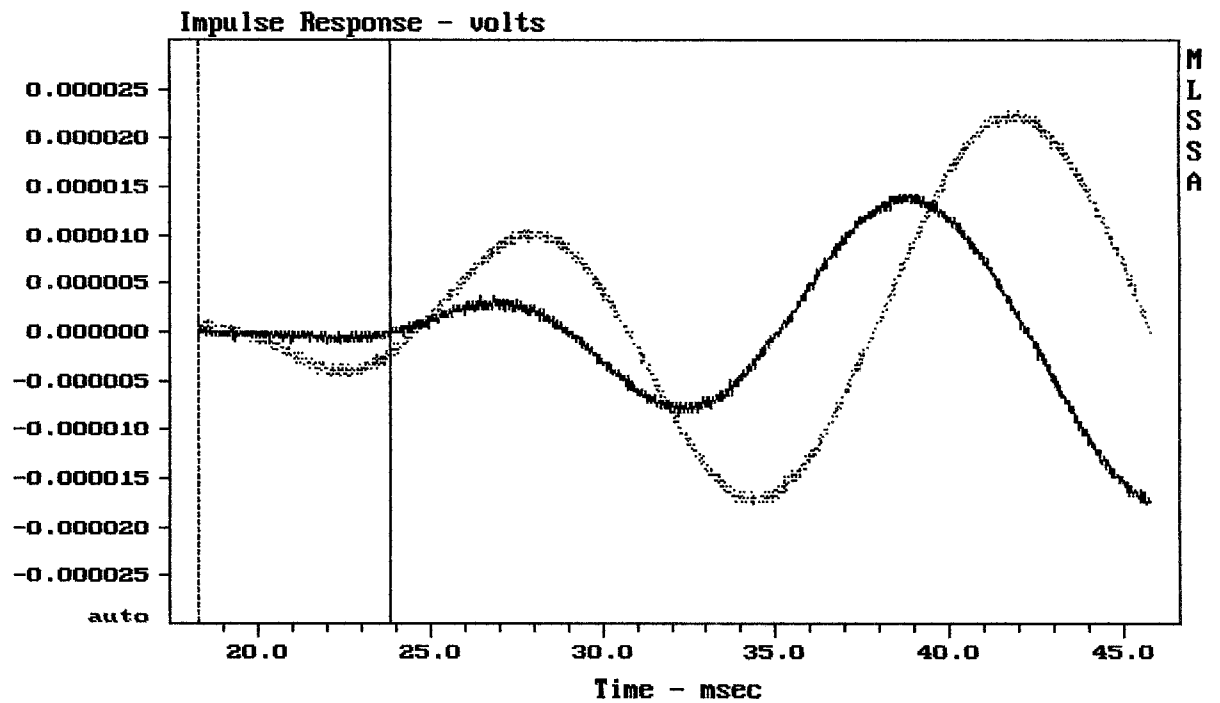
MLSSA: Frequency Domain



CURSOR:  $dy = -4.18607e-005$   $x = 50.4020$  (4582)

RCF SUB 8005-AS phase 0st. ---- / 180st. ....

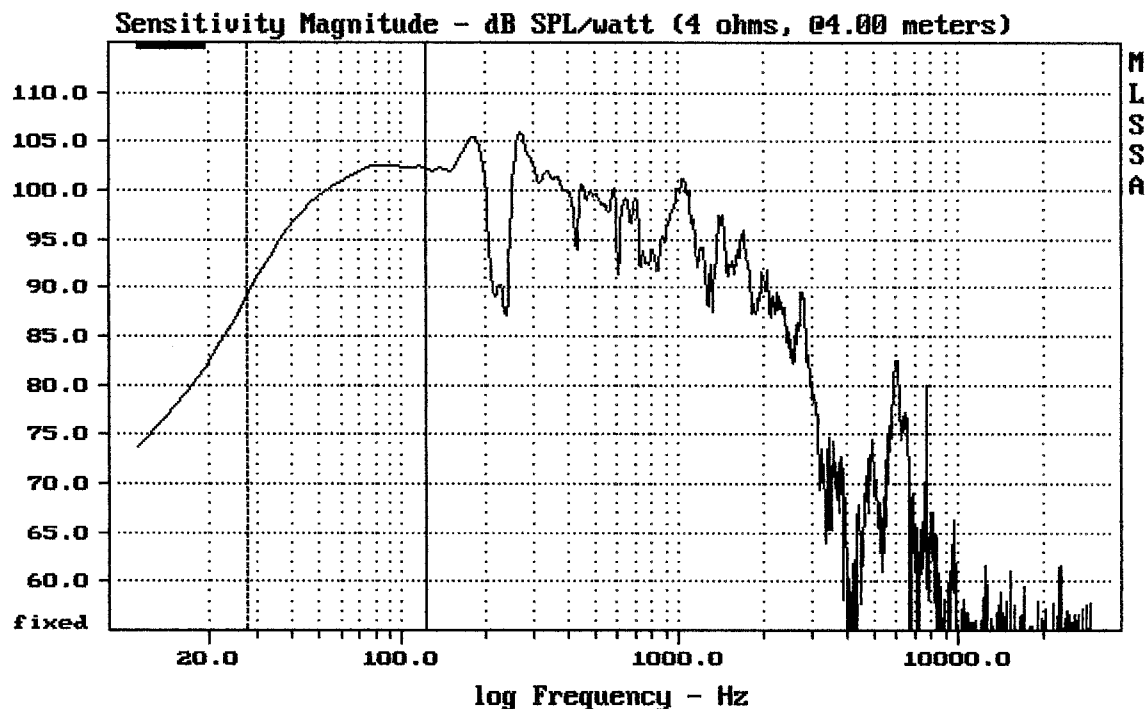
MLSSA: Time Domain



CURSOR:  $y = 0$   $x = 23.8480$  (2168)

RCF SUB 8005-AS normal ... / cardioid ----

MLSSA: Time Domain

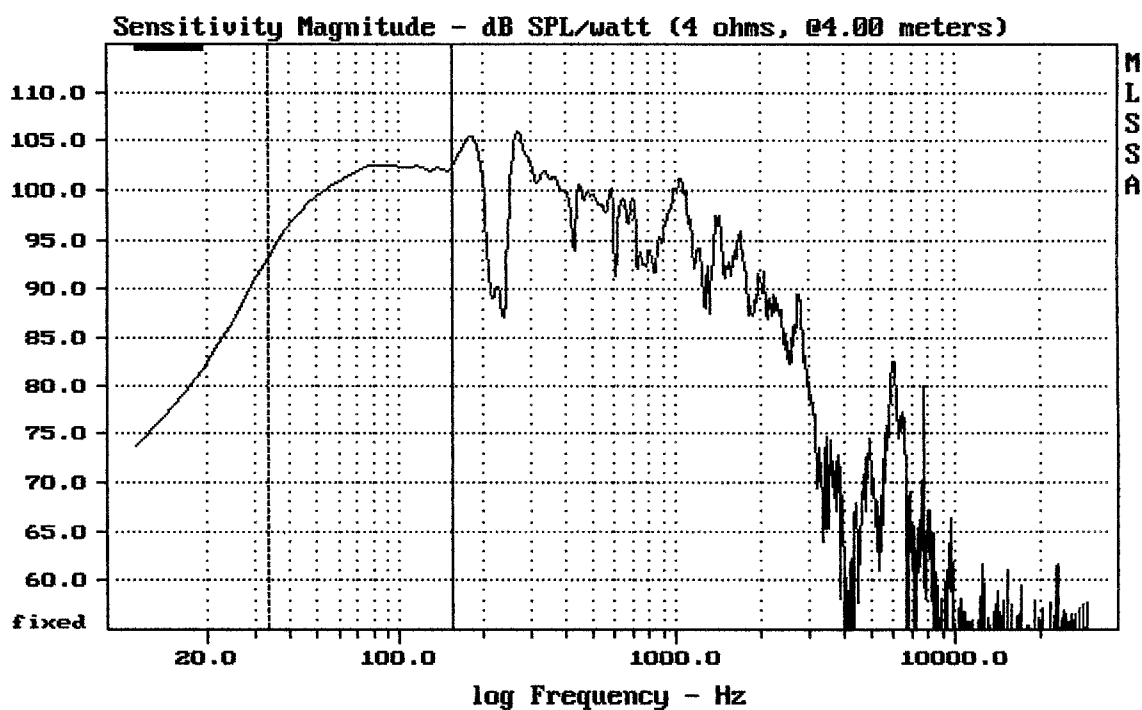



---

Level (28:122 Hz) = 100.24 dB SPL/watt (4 ohms, @4.00 meters)

---

MLSSA: Frequency Domain



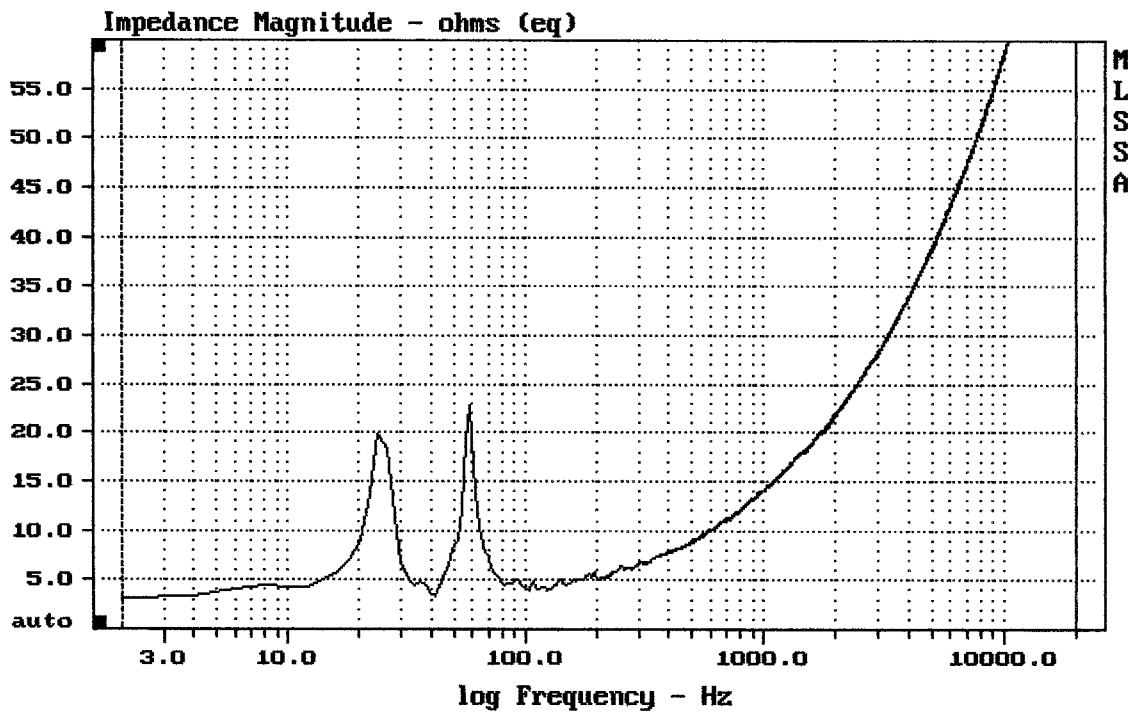

---

Level (33:155 Hz) = 100.99 dB SPL/watt (4 ohms, @4.00 meters)

---

RCF SUB 0005-AS

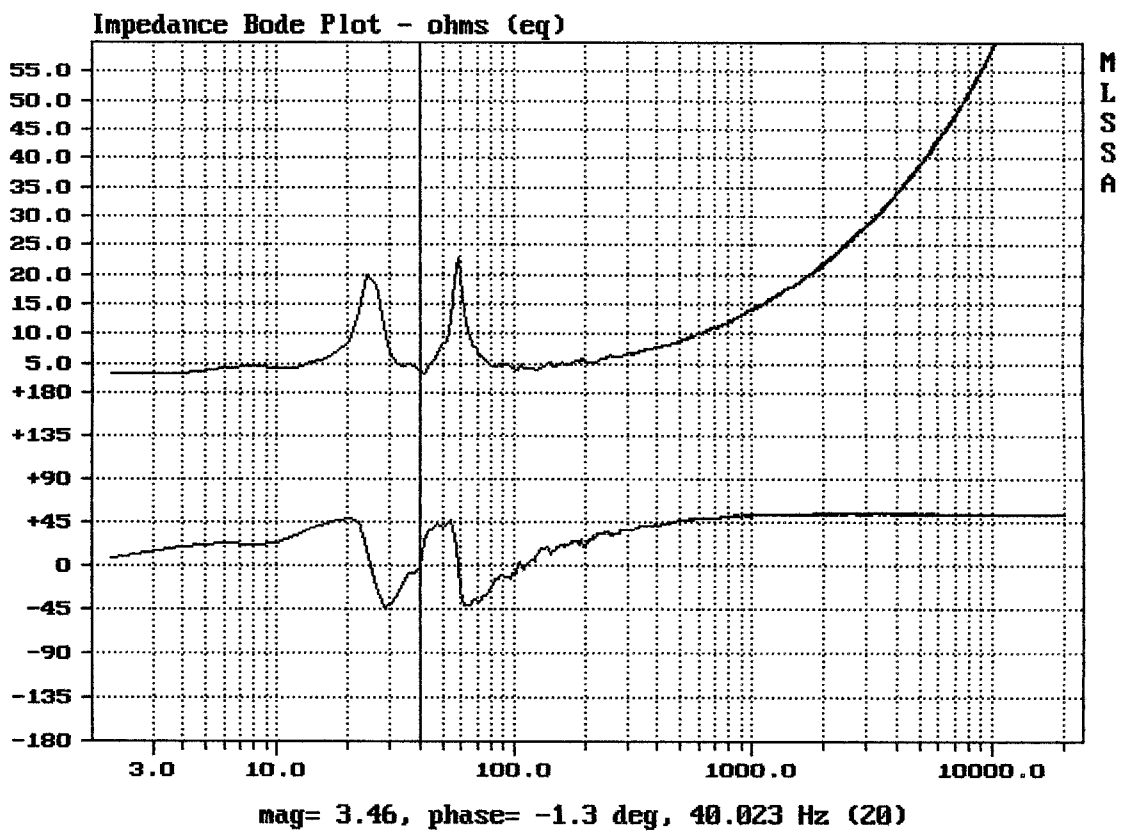
MLSSA: Frequency Domain



Printer not ready

RCF SUB 8005-AS

MLSSA: Frequency Domain



RCF SUB 8005-AS

Measured Data

Line	Parameter	Value	Units
1	RMSE-free	0.51	Ohms
2	Fs	37.03	Hz
3	Re	2.91	Ohms[dc]
4	Res	44.89	Ohms
5	Qms	7.62	
6	Qes	0.49	
7	Qts	0.46	
8	L1	1.28	mH
9	L2	1.83	mH
10	R2	6.91	Ohms
11	RMSE-load	0.54	Ohms
12	Vas(Sd)	240.60	liters
13	Mms	324.63	grams
14	Cms	57	$\mu\text{M}/\text{Newton}$
15	B1	21.10	Tesla-M
16	SPLref(Sd)	95.8	dB[Re]
17	Rub-index	0.01	

Method: Mass-loaded (260.00 grams)

Area (Sd): 1734.94 sq cm

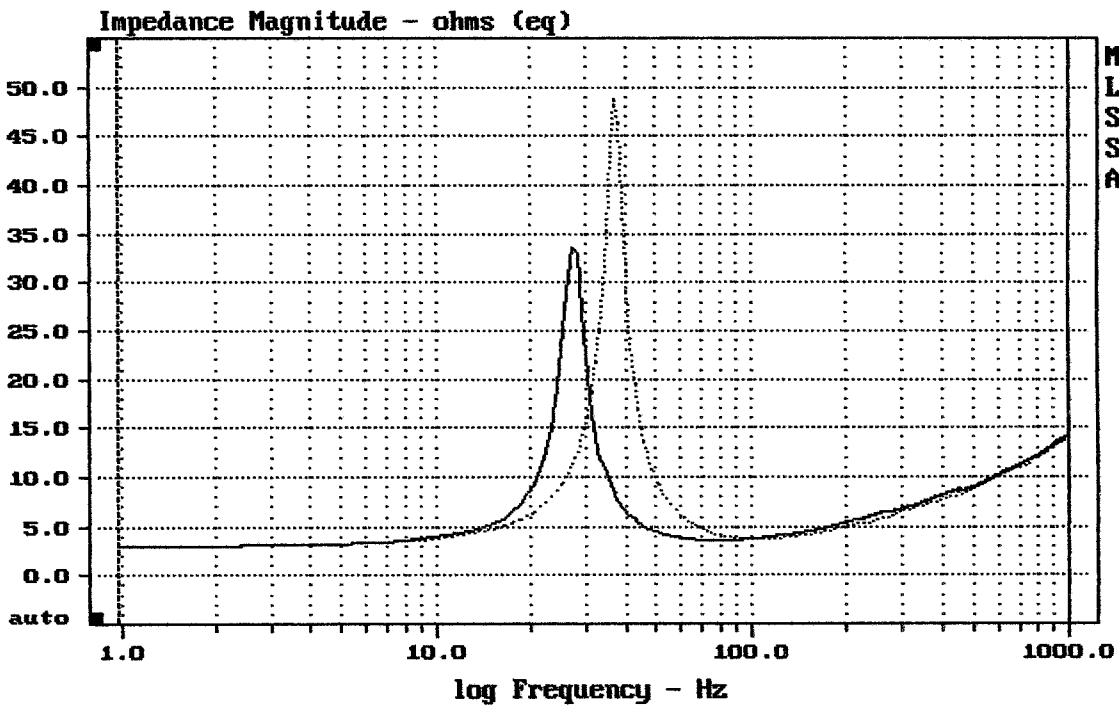
DCR mode: Measure (-0.11 ohms)

QC file: CLOSED

Analysis successful. Shift in Fs = -26.2% (-20% to -50% is recommended).

SUB 8005-AS

MLSSA: Parameters



mean: 9.223, rms: 10.11, std: 4.139, max: 48.84, min: 2.947

MLSSA: Frequency Domain