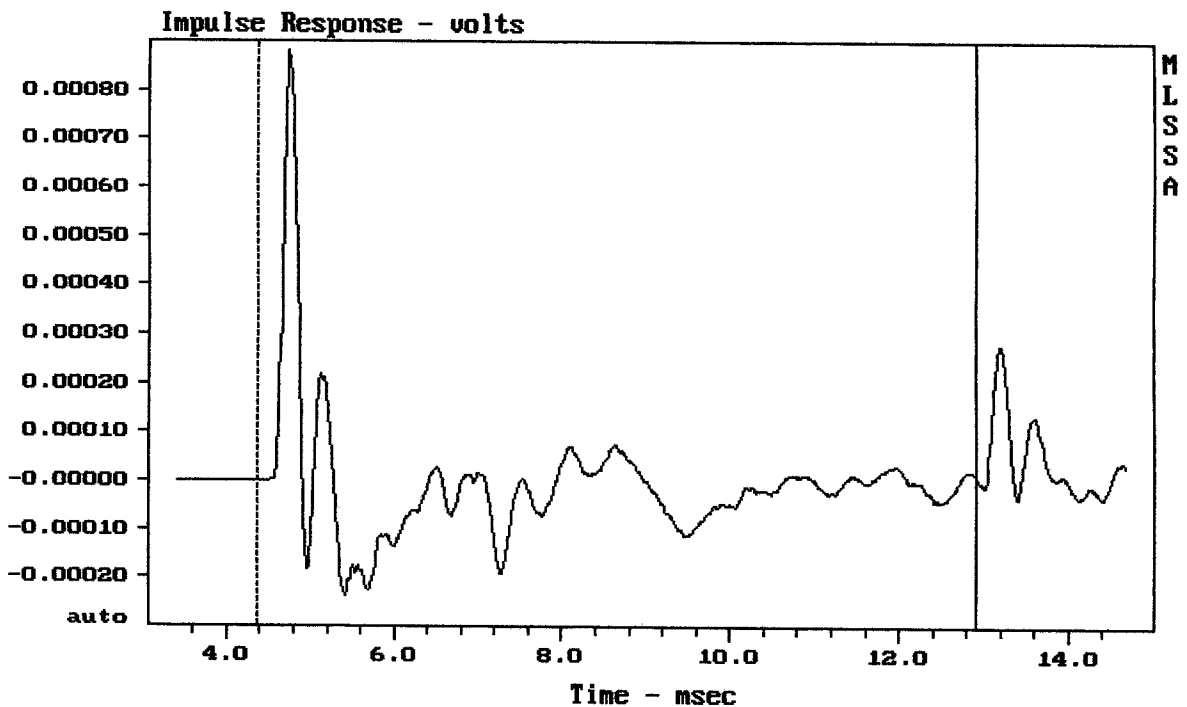


Level (55:699 Hz) = 88.08 dB SPL/watt (4 ohms, @1.50 meters)

SELENIUM 15SW5

MLSSA: Frequency Domain



CURSOR: y = 1.26130e-005 x = 12.9030 (1173)

SELENIUM 15SW5

Measured Data

QC Limits

Line	Parameter	Value	Units
1	RMSE-free	0.54	Ohms
2	Fs	24.67	Hz
3	Re	3.37	Ohms[dc]
4	Res	69.85	Ohms
5	Qms	8.74	
6	Qes	0.42	
7	Qts	0.40	
8	L1	0.78	mH
9	L2	1.71	mH
10	R2	7.86	Ohms
11	RMSE-load	0.68	Ohms
12	Vas(Sd)	204.19	liters
13	Mms	185.13	grams
14	Cms	225	$\mu\text{M}/\text{Newton}$
15	B1	15.14	Tesla-M
16	SPLref(Sd)	90.4	dB[Re]
17	Rub-index	0.01	

Method: Mass-loaded (100.00 grams)

Area (Sd): 804.25 sq cm

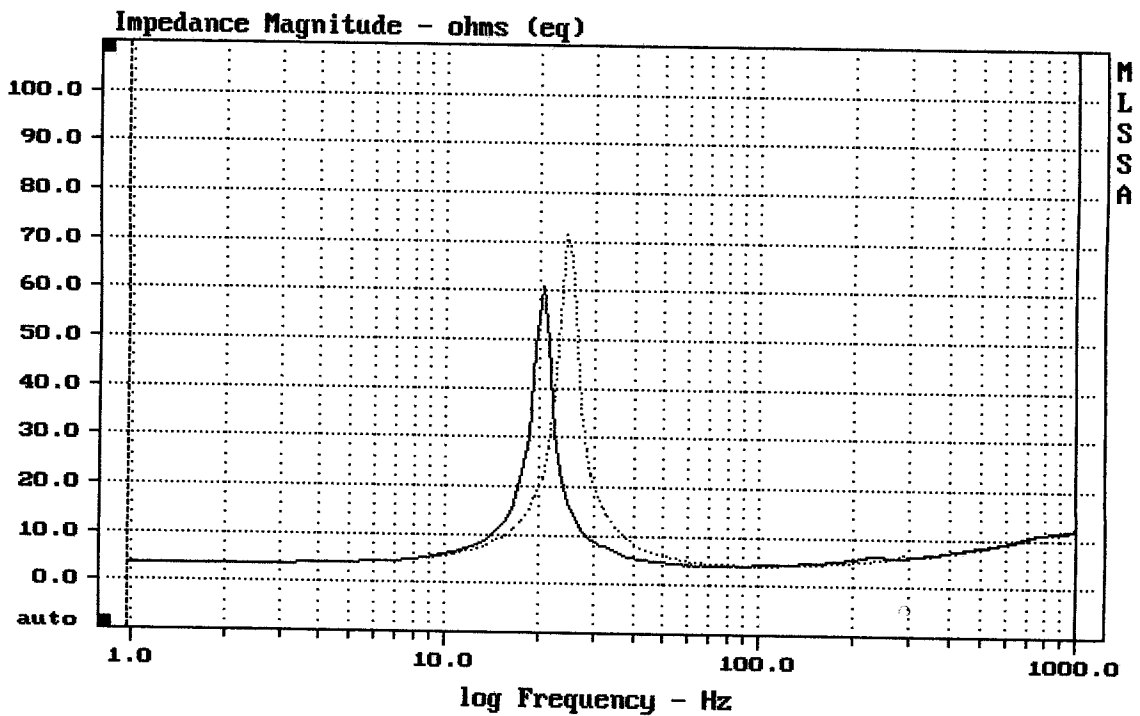
DCR mode: Measure (-0.07 ohms)

QC file: CLOSED

Analysis successful. Shift in Fs = -17.2% (-20% to -50% is recommended).

15SW5

MLSSA: Parameters



DTTO

MLSSA: Frequency Domain

BSP=61,7