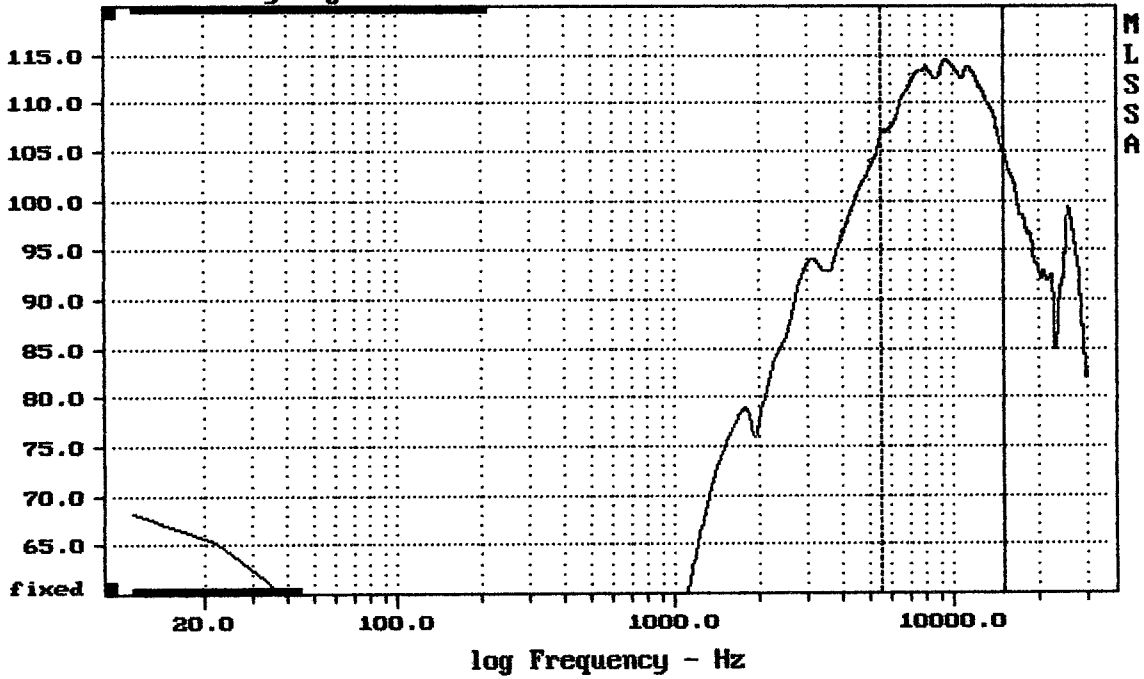


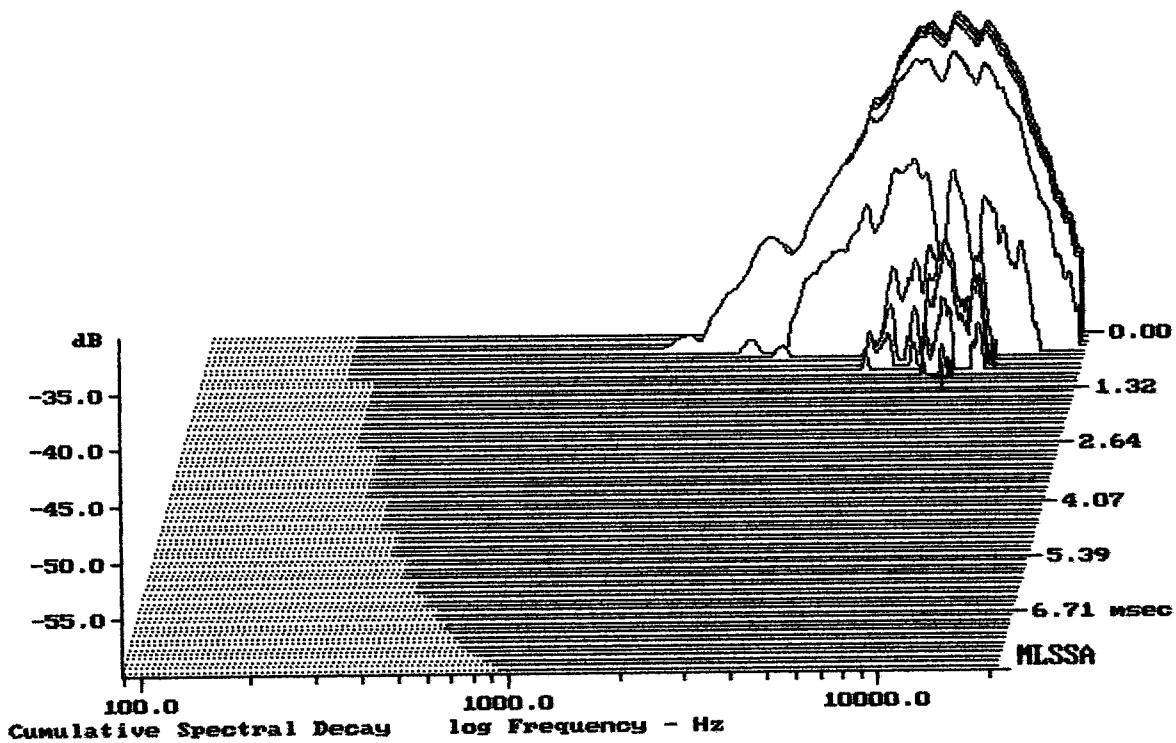
Sensitivity Magnitude - dB SPL/watt (8 ohms, @1.00 meters)



Level (5504:15004 Hz) = 112.00 dB SPL/watt (8 ohms, @1.00 meters)

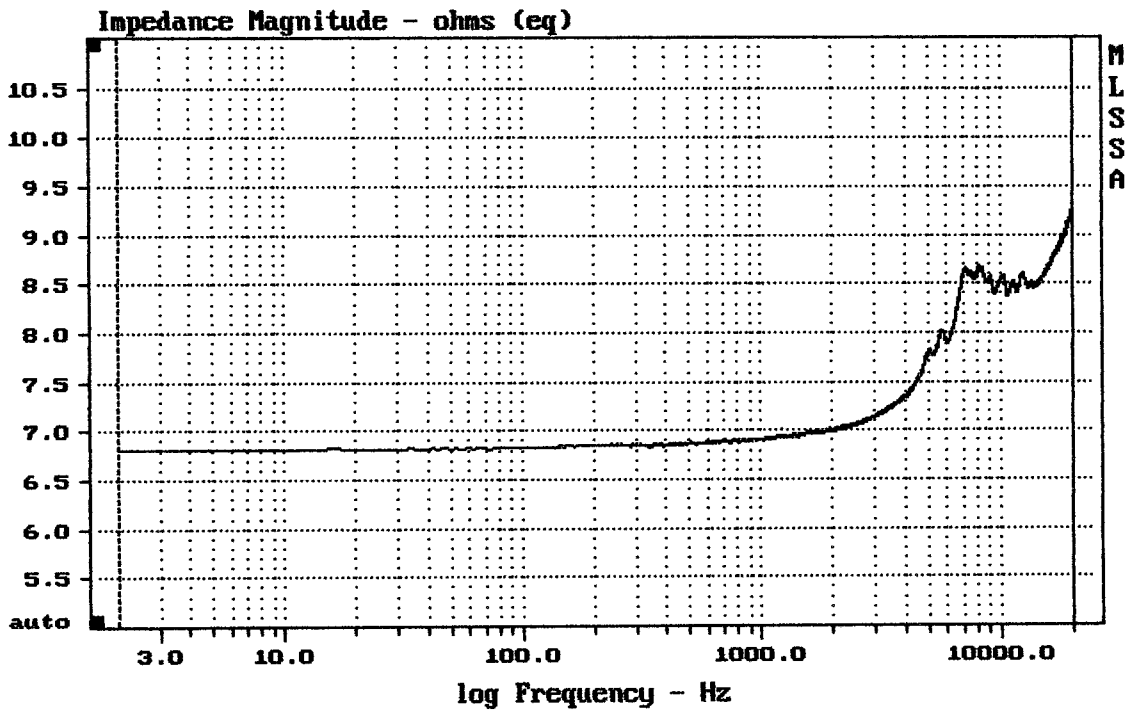
ST100 BLK

MLSSA: Frequency Domain



-59.80 dB, 9055 Hz (284), 1.100 msec (11)

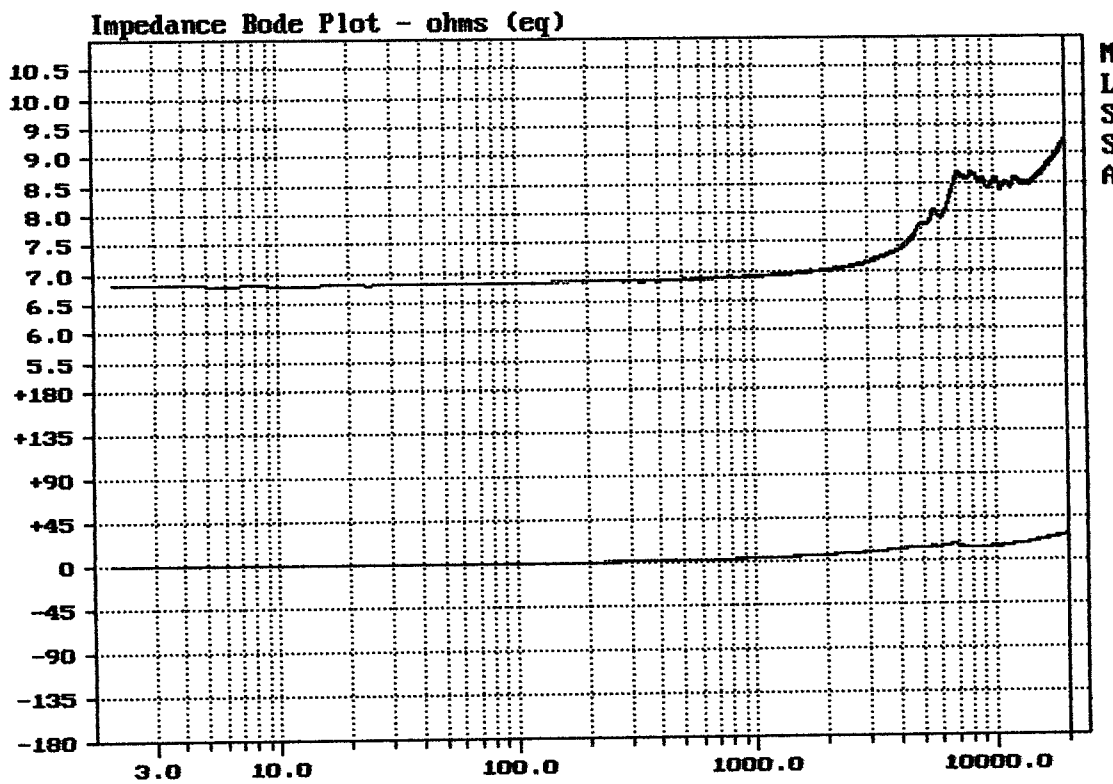
DTTO



mean: 8.215, rms: 8.244, std: 0.6913, max: 9.303, min: 6.804

ST400 BLK

MLSSA: Frequency Domain



mag= 9.28, phase= 26.9 deg, 20001.520 Hz (9995)

DTTO