

Line	Parameter	Value	Units
1	RMSE-free	0.83	Ohms
2	Fs	46.86	Hz
3	Re	6.93	Ohms[dc]
4	Res	158.24	Ohms
5	Qms	8.54	
6	Qes	0.37	
7	Qts	0.36	
8	L1	1.44	mH
9	L2	1.58	mH
10	R2	6.84	Ohms
11	RMSE-load	1.05	Ohms
12	Vas(Sd)	67.42	liters
13	Mms	67.73	grams
14	Cms	170	$\mu\text{M}/\text{Newton}$
15	Bl	19.22	Tesla-M
16	SPLref(Sd)	94.5	dB[Re]
17	Rub-index	0.00	

Method: Mass-loaded (80.00 grams)

Area (Sd): 530.93 sq cm

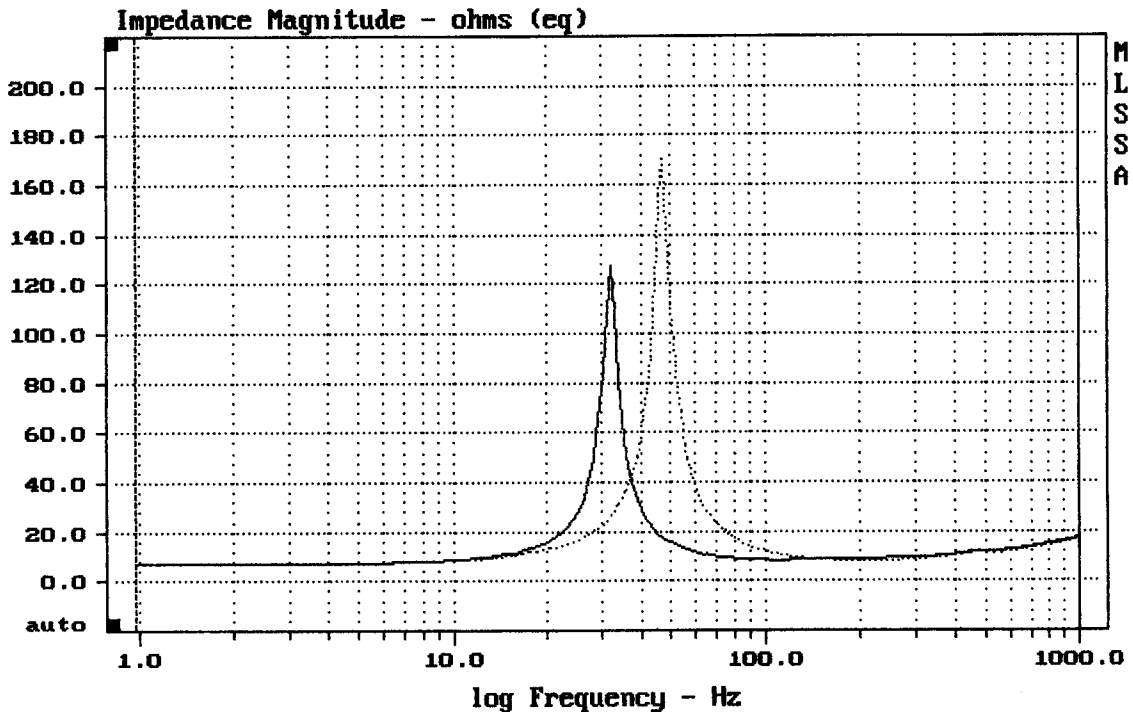
DCR mode: Measure (-0.06 ohms)

QC file: CLOSED

Analysis successful. Shift in Fs = -31.5% (-20% to -50% is recommended).

SELENIUM WPU1209

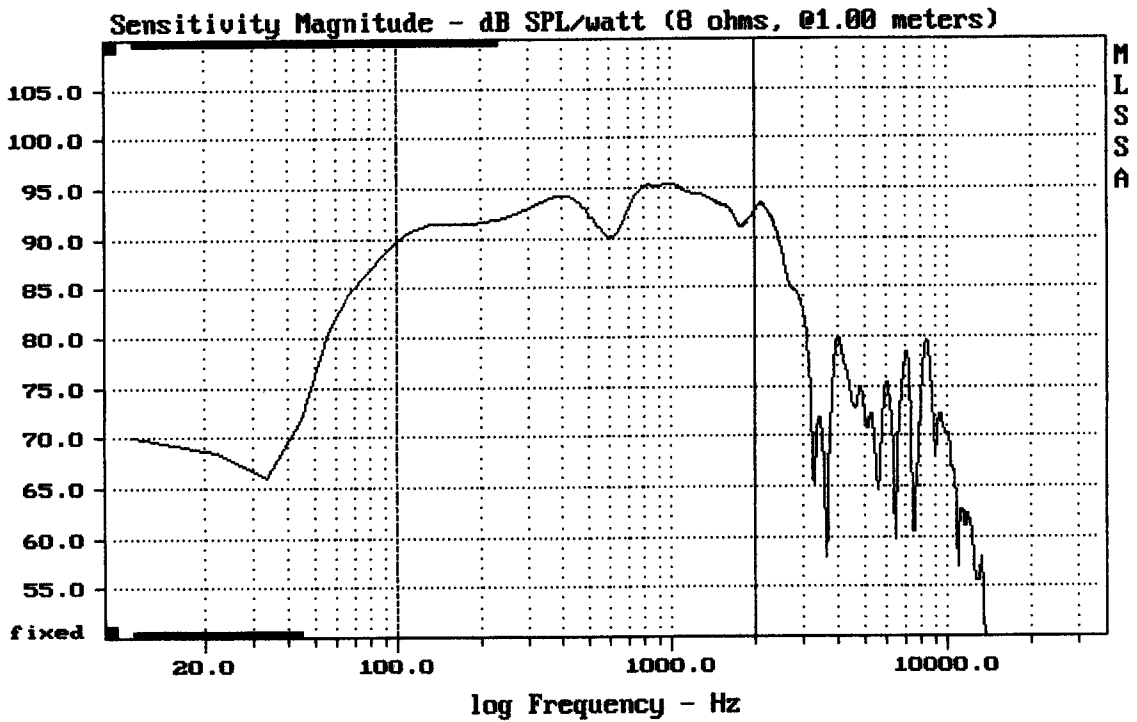
MLSSA: Parameters



mean: 14.05, rms: 19.09, std: 12.92, max: 170.4, min: 7.002

DTTO

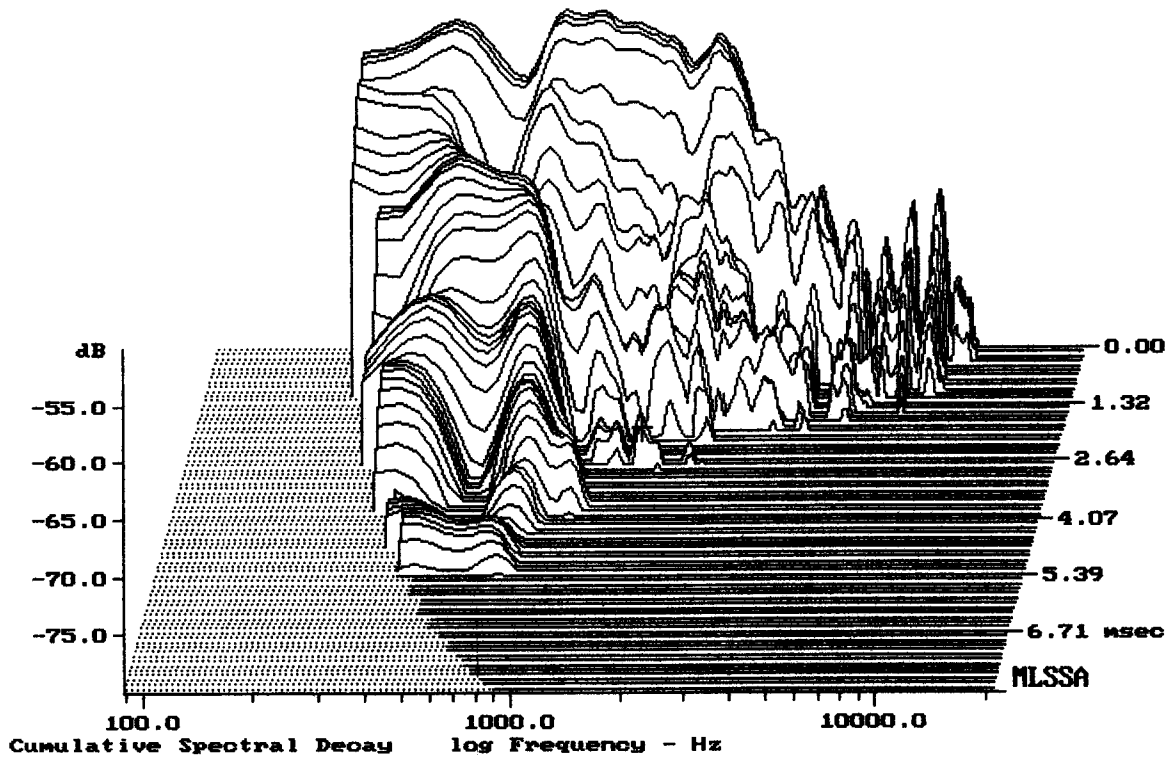
MLSSA: Frequency Domain



Level (100:2009 Hz) = 92.97 dB SPL/watt (8 ohms, @1.00 meters)

SELENIUM WPU 1209

MLSSA: Frequency Domain



-76.74 dB, 1554 Hz (35), 2.750 msec (26)