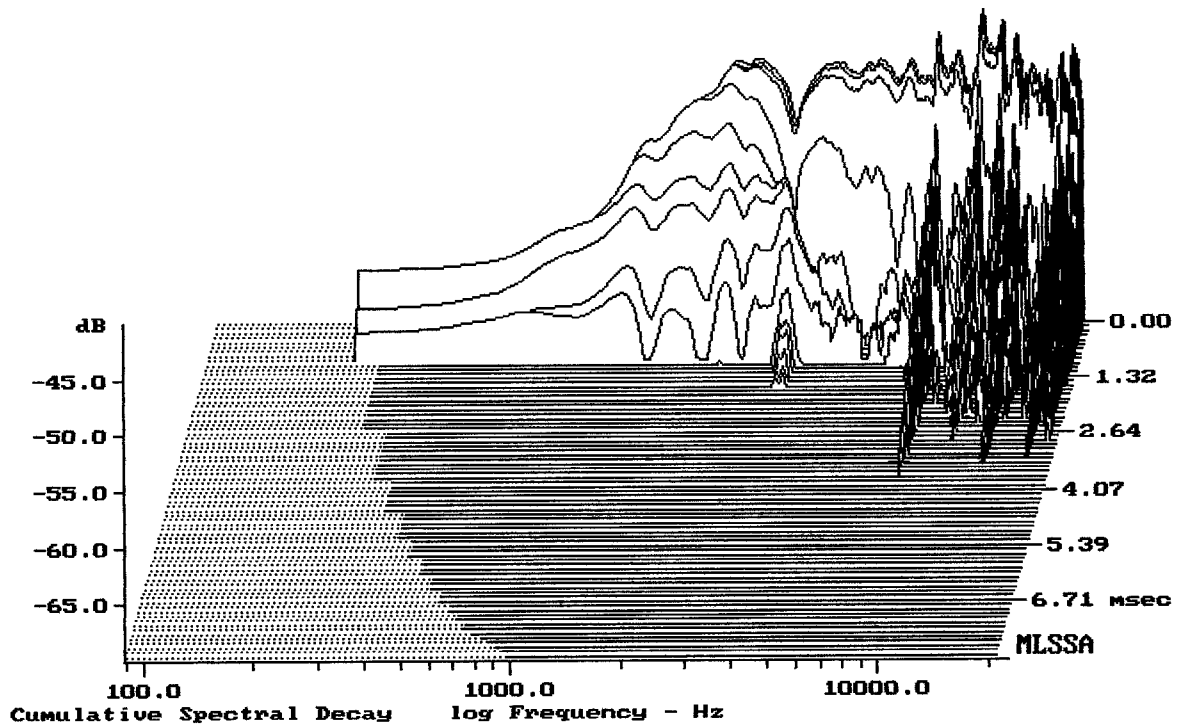


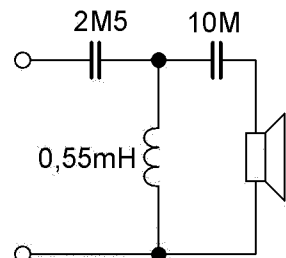
Level (1609:21007 Hz) = 101.48 dB SPL/watt (16 ohms, @1.00 meters)

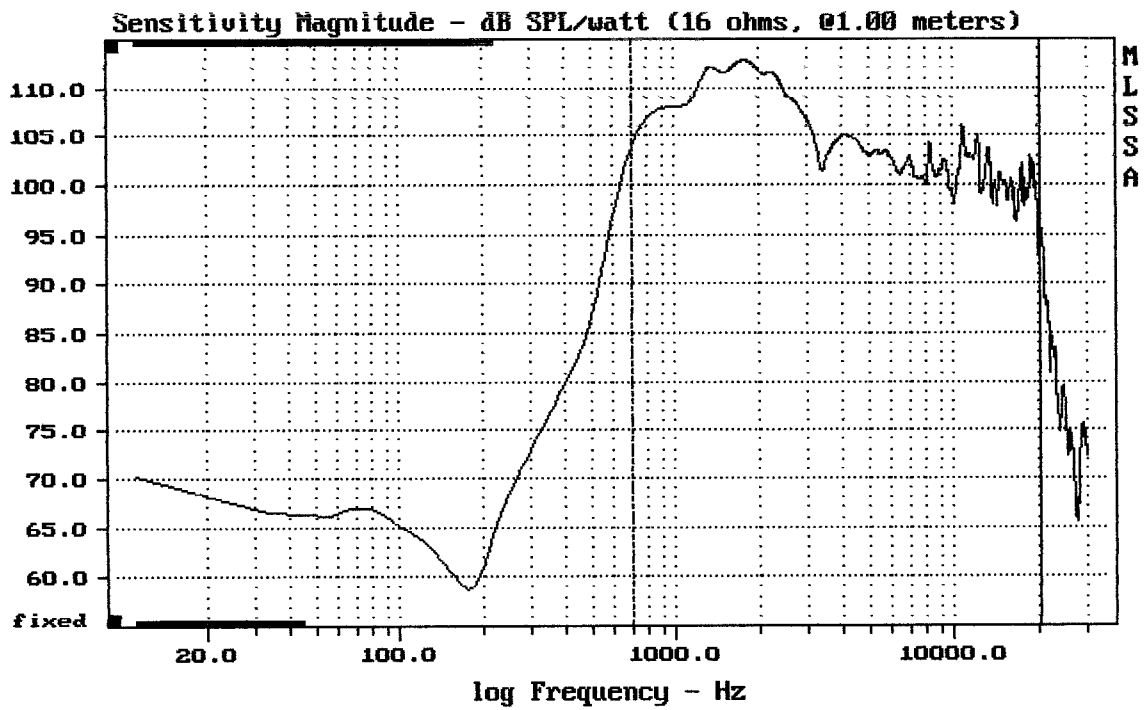
D3300TI 16ohm + C9090

MLSSA: Frequency Domain



-69.51 dB, 8212 Hz (185), 3.520 msec (33)





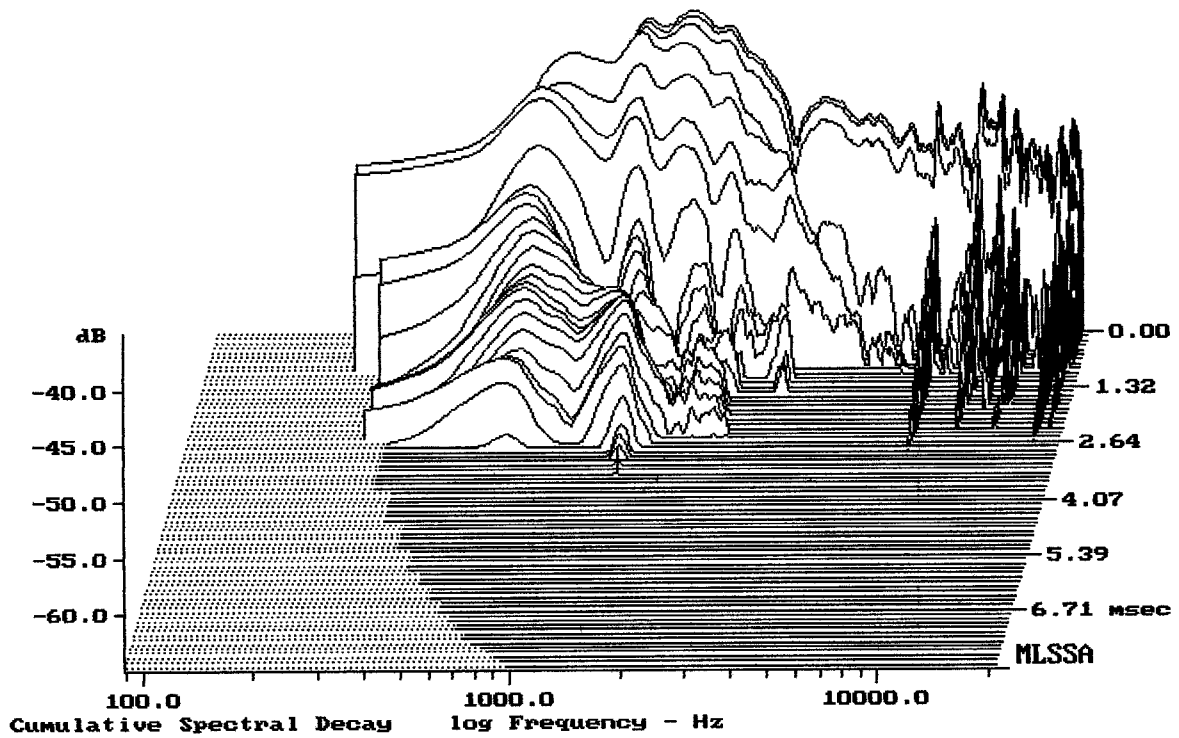

---

Level (699:20497 Hz) = 107.42 dB SPL/watt (16 ohms, @1.00 meters)

---

D3300TI 16ohm + C9090

MLSSA: Frequency Domain



-64.47 dB, 1376 Hz (31), 3.190 msec (30)