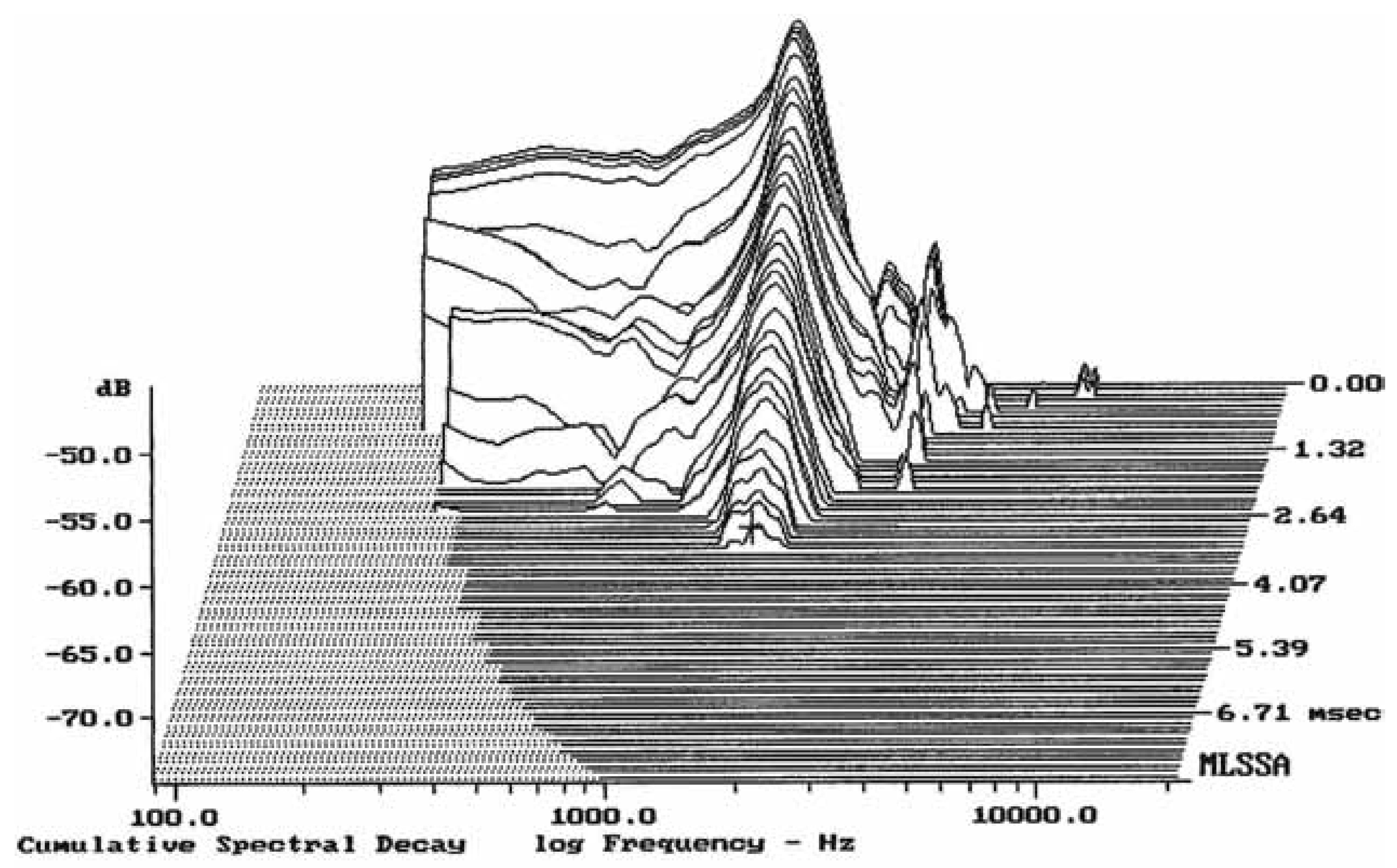


Level (100:1898 Hz) = 90.82 dB SPL/watt (8 ohms, @1.00 meters)

12BG100

MLSSA: Frequency Domain



-73.38 dB, 1554 Hz (35), 3.300 msec (31)

Measured Data

QC Limits

Line	Parameter	Value	Units
1	RMSE-free	0.74	Ohms
2	Fs	44.18	Hz
3	Re	5.04	Ohms[dc]
4	Res	51.51	Ohms
5	Qms	4.53	
6	Qes	0.44	
7	Qts	0.40	
8	L1	1.06	mH
9	L2	1.66	mH
10	R2	6.45	Ohms
11	RMSE-load	0.61	Ohms
12	Vas(Sd)	36.77	liters
13	Mms	119.43	grams
14	Cms	109	μ M/Newton
15	B1	19.43	Tesla-M
16	SPLref(Sd)	90.4	dB[Re]
17	Rub-index	0.03	

Method: Mass-loaded (80.00 grams)

Area (Sd): 490.87 sq cm

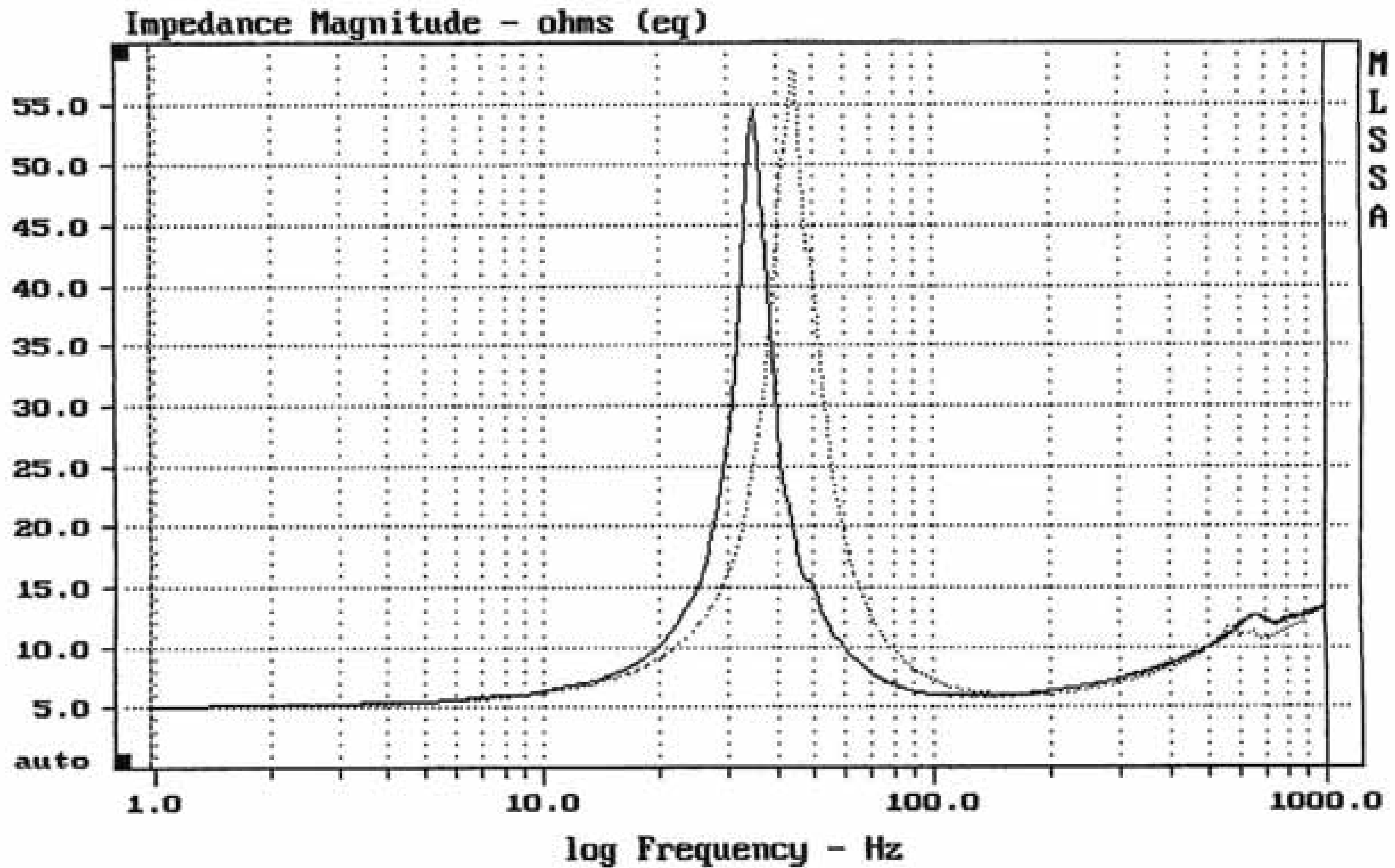
DCR mode: Measure (-0.07 ohms)

QC file: CLOSED

Analysis successful. Shift in Fs = -20.6% (-20% to -50% is recommended).

12BG100

MLSSA: Parameters



mean: 10.47, rms: 11.73, std: 5.29, max: 57.82, min: 5.142

DTTO

MLSSA: Frequency Domain