

Koaxiální reproduktor B&C Speakers 12CXB

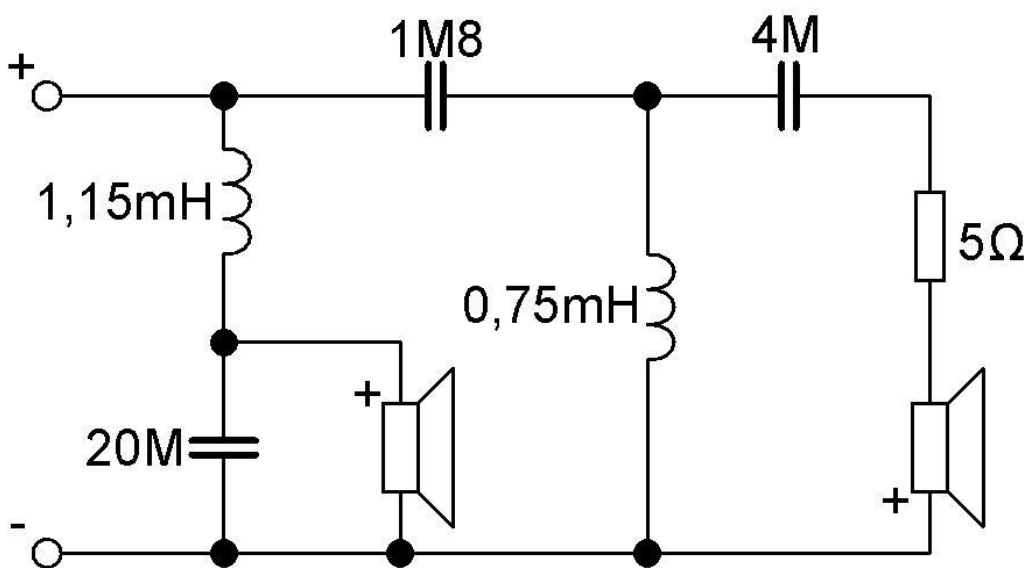
<http://eshop.prodance.cz/DetailPage.asp?DPG=82692>

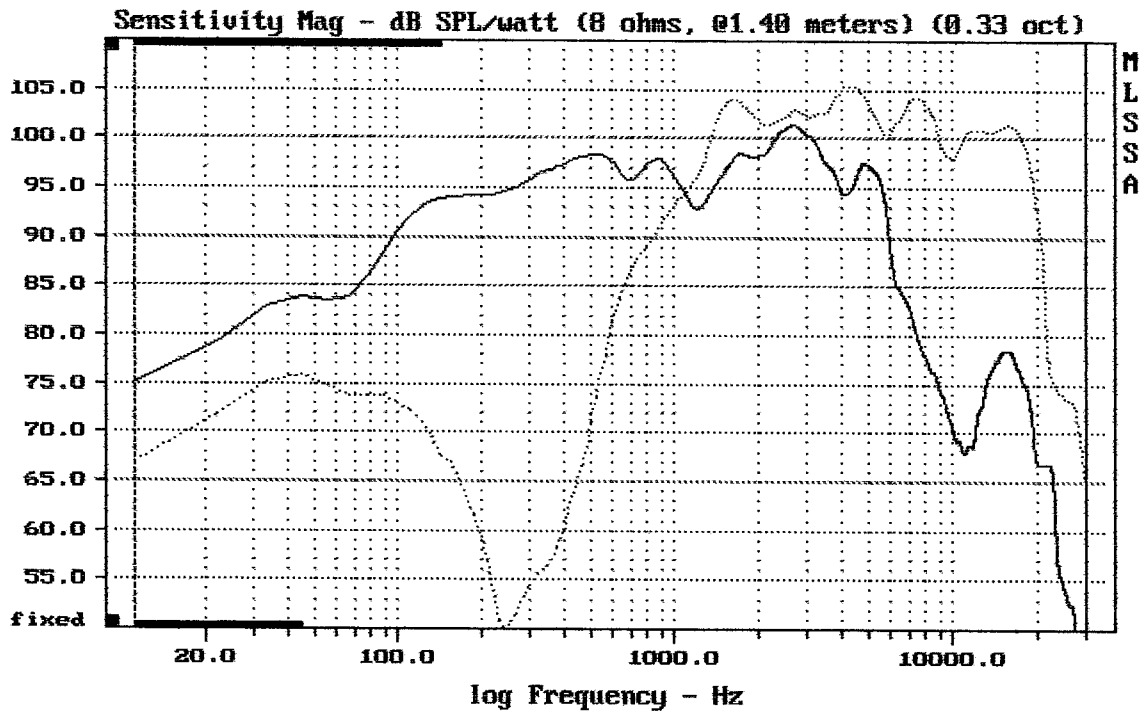
Doporučená výhybka:

B&C Speakers XO-2

<http://eshop.prodance.cz/DetailPage.asp?DPG=78581>

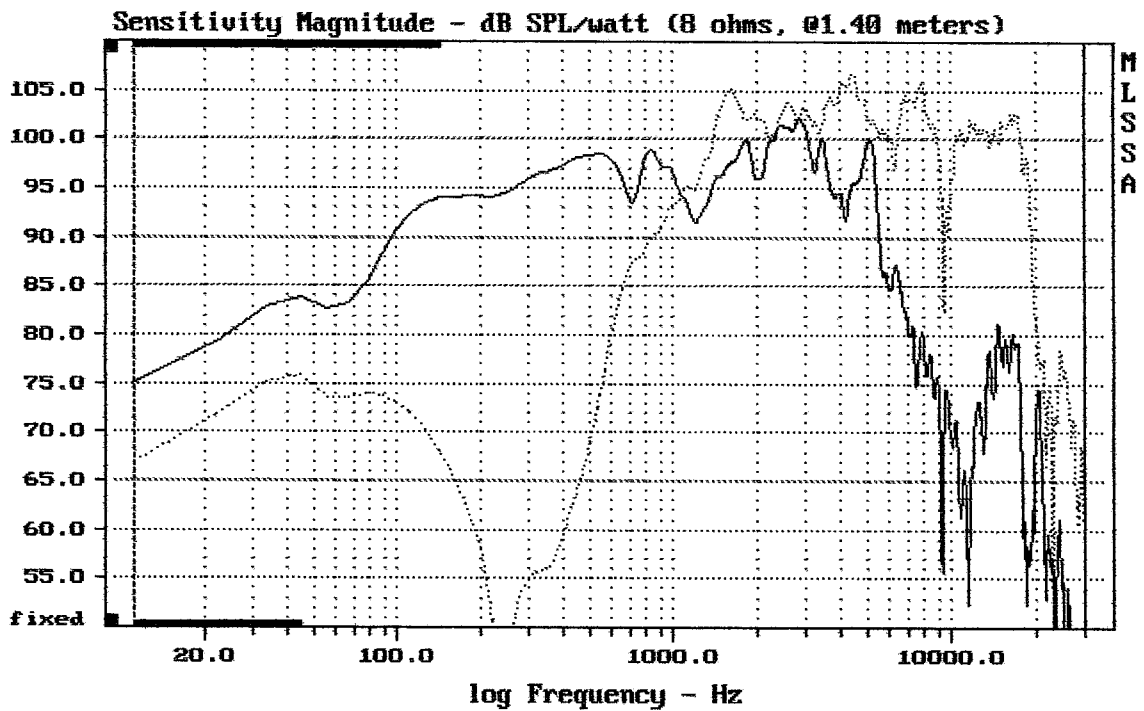
Měřeno s:



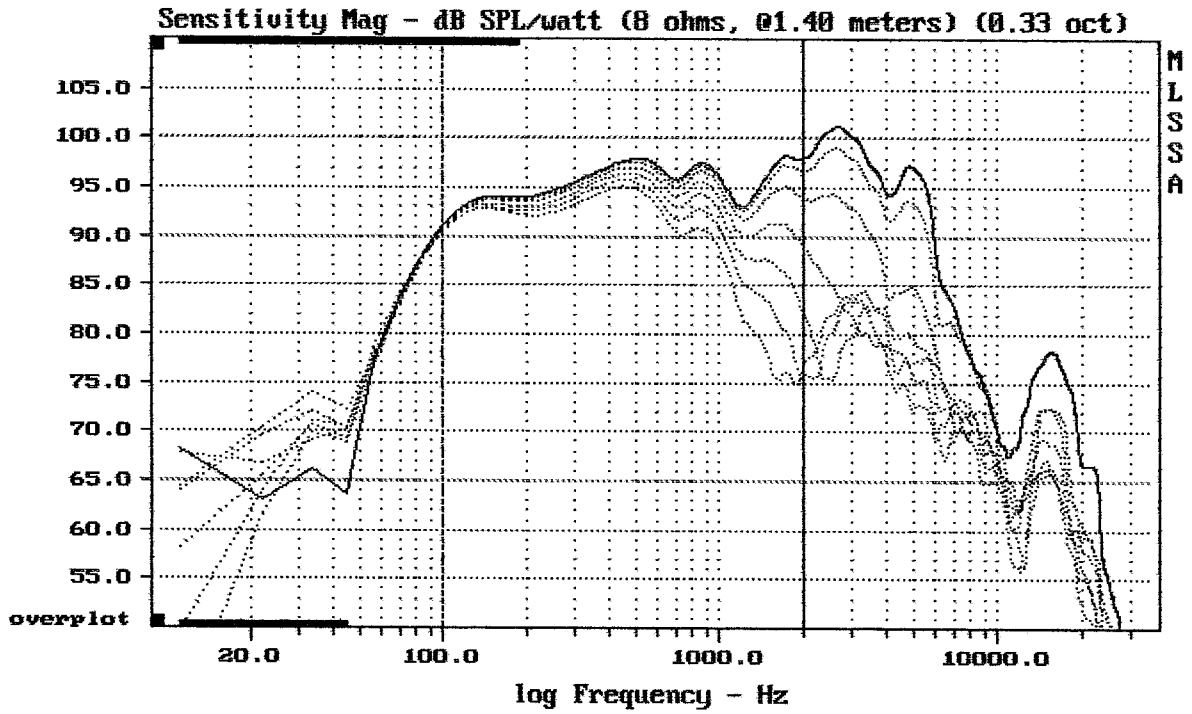


B&C 12CXB

MLSSA: Frequency Domain



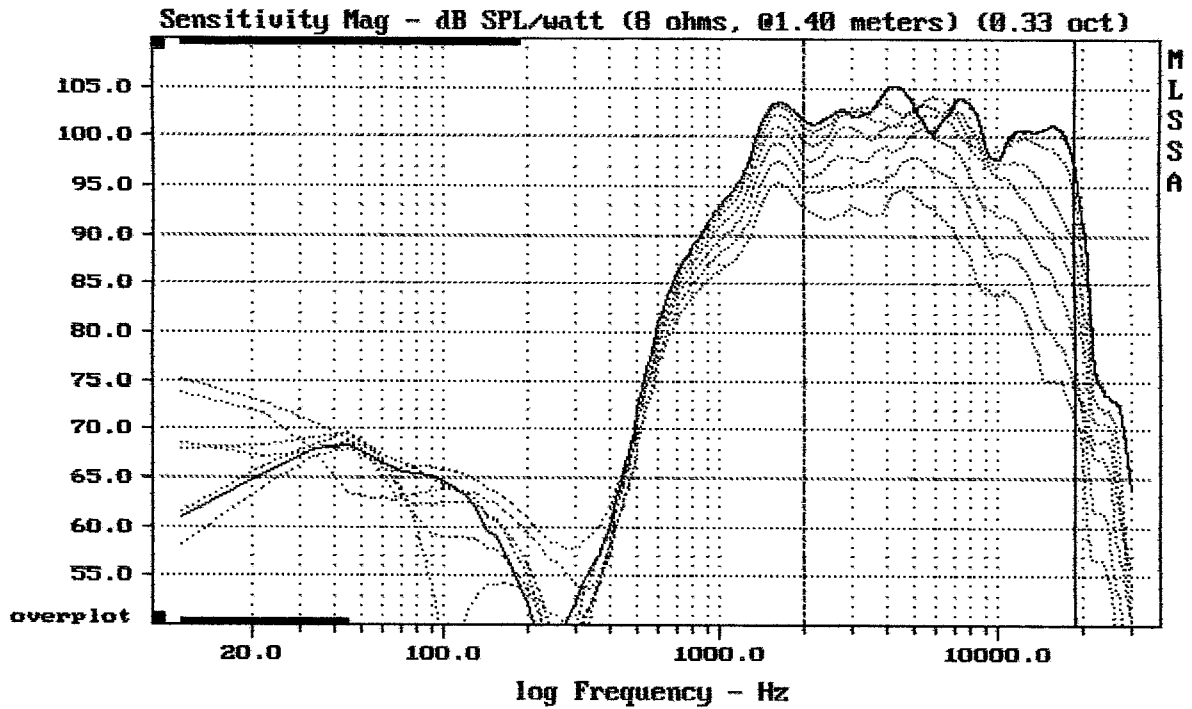
B&C 12CXB



Overlay Compare: dev= +10/-12, std= 7.8, avg= -11

12CXB 0/10/...60 DEG.

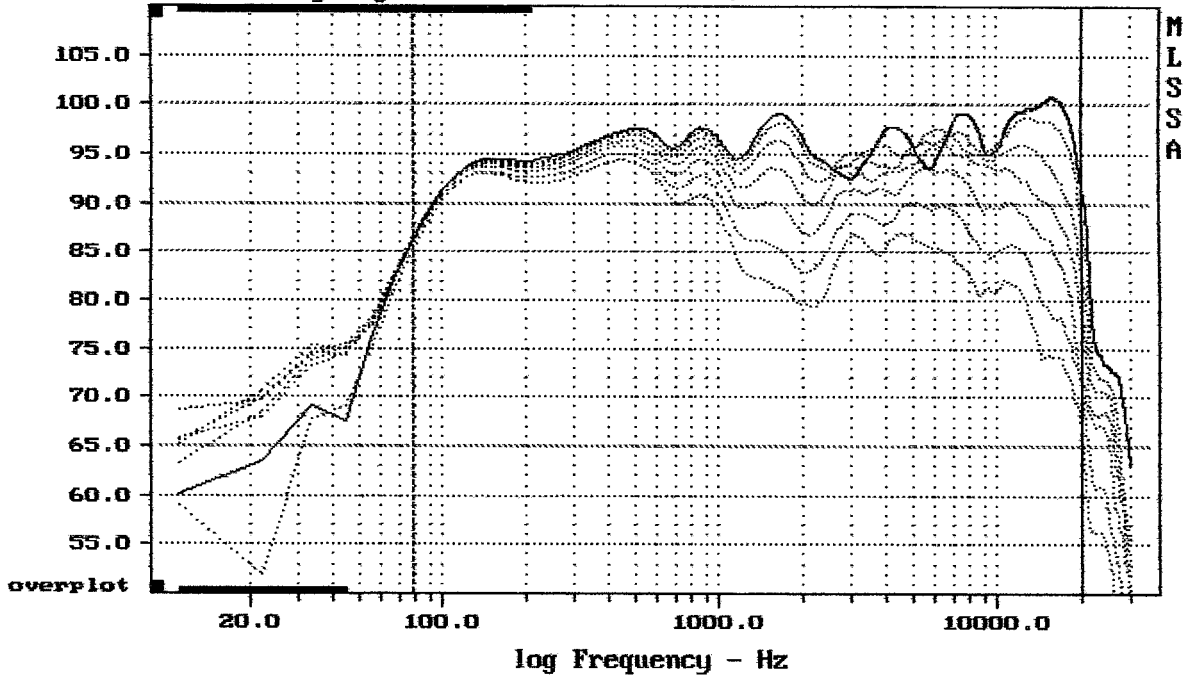
MLSSA: Frequency Domain



Overlay Compare: dev= +9.7/-9.3, std= 6.5, avg= -17

12CXB 0/10/...60 DEG.

Sensitivity Mag - dB SPL/watt (8 ohms, 01.40 meters) (0.33 oct)



Overlay Compare: dev= +17/-9.7, std= 7, avg= -17

12CXB 0/10/...60 DEG.

MLSSA SPO 4.W #960903-3057-3075
 Measured Data QC Limits

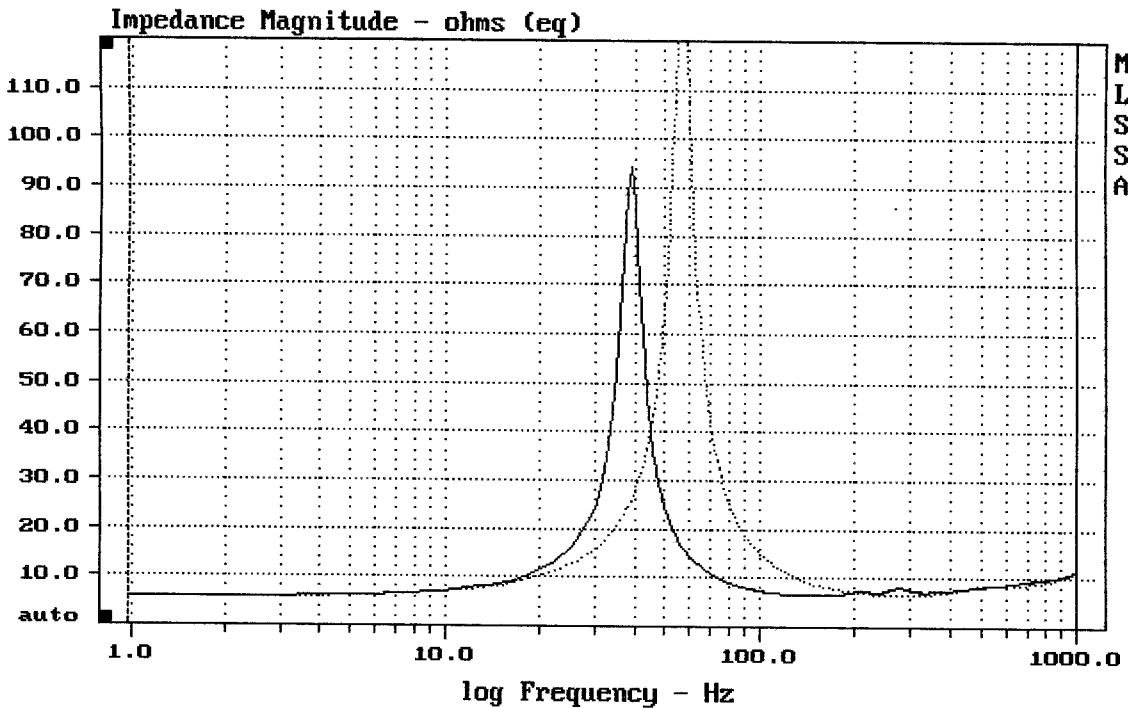
Line	Parameter	Value	Units
1	RMSE-free	0.62	Ohms
2	Fs	56.45	Hz
3	Re	5.41	Ohms[dc]
4	Res	129.00	Ohms
5	Qms	7.17	
6	Qes	0.30	
7	Qts	0.29	
8	L1	0.77	mH
9	L2	1.18	mH
10	R2	4.10	Ohms
11	RMSE-load	0.57	Ohms
12	Vas(Sd)	92.95	liters
13	Mms	31.33	grams
14	Cms	254	µM/Newton
15	B1	14.14	Tesla-M
16	SPLref(Sd)	99.3	dB[Re]
17	Rub-index	0.00	

Method: Mass-loaded (40.00 grams) Area (Sd): 510.71 sq cm
 DCR mode: Measure (-0.27 ohms) QC file: CLOSED

Analysis successful. Shift in Fs = -31.0% (-20% to -50% is recommended).

B+C 12CXB

MLSSA: Parameters



CURSOR: dy = -0.092222 x = 1000.9766 (1025)

MLSSA: Frequency Domain