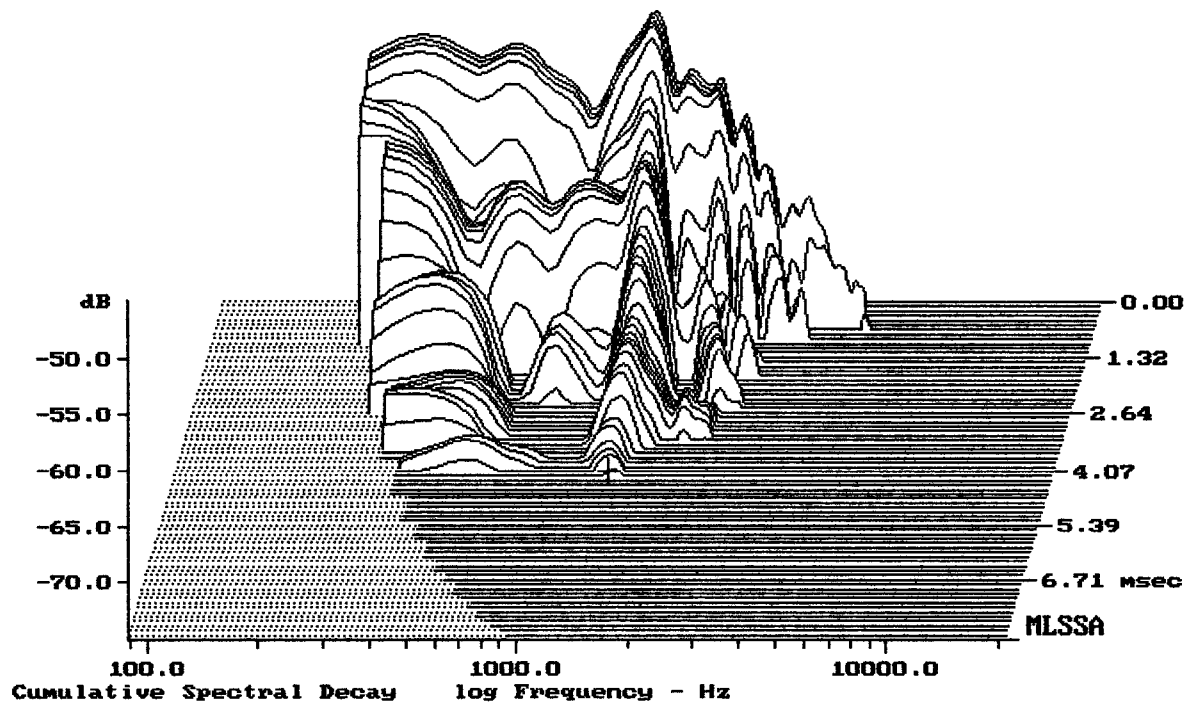


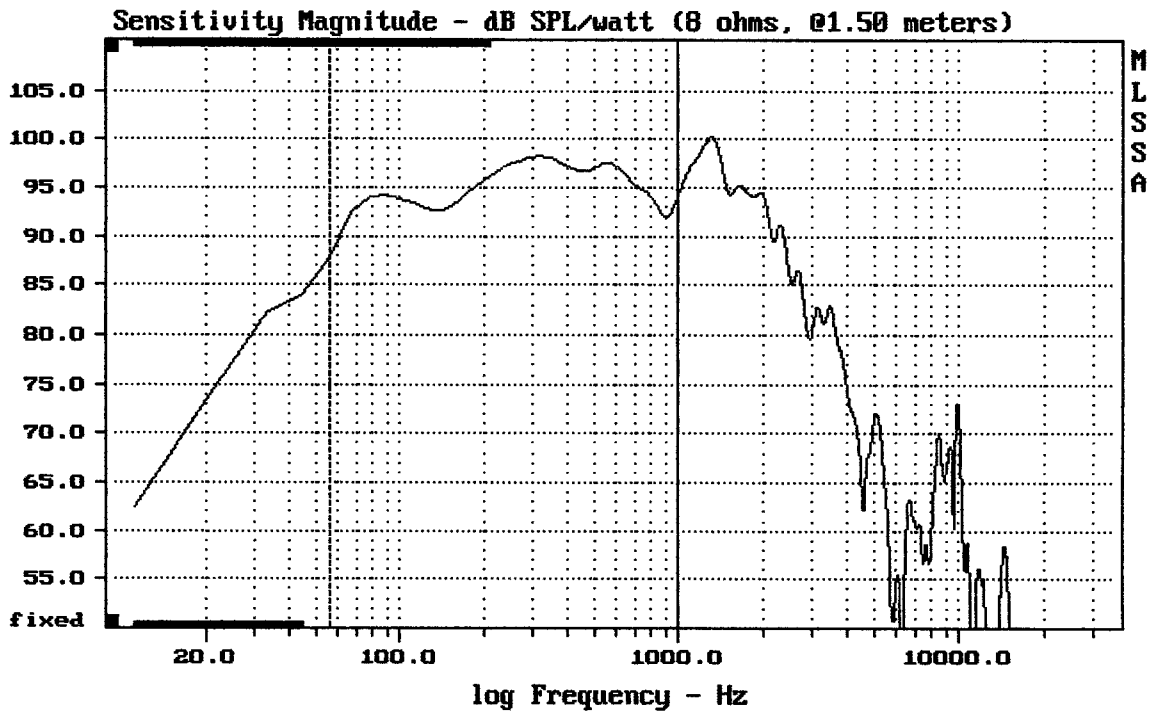
Level (100:2009 Hz) = 96.21 dB SPL/watt (8 ohms, @1.50 meters)

BEYMA 18G550

MLSSA: Frequency Domain



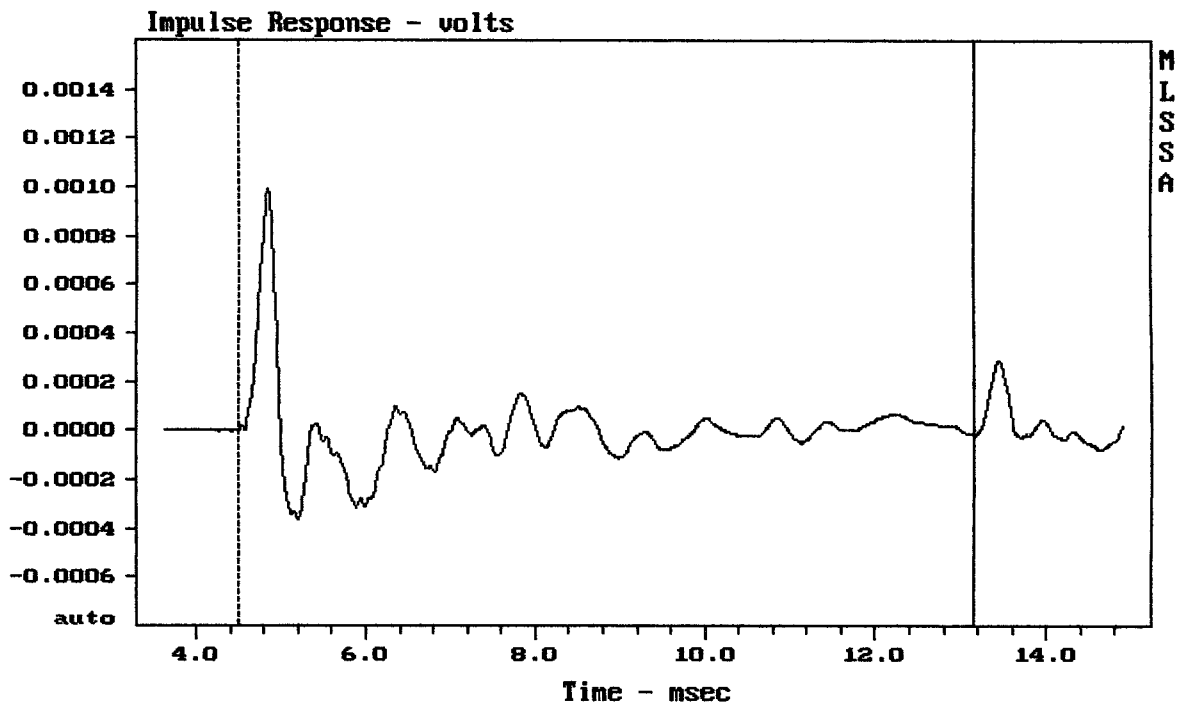
-74.58 dB, 1332 Hz (30), 4.180 msec (39)



Level (55:999 Hz) = 95.40 dB SPL/watt (8 ohms, @1.50 meters)

BEYMA 18G550

MLSSA: Frequency Domain



mean: -2.334e-006, rms: 0.0001613, std: 0.0001612, max: 0.0009887, min: -0.000

BEYMA 18G550

Measured Data

QC Limits

Line	Parameter	Value	Units
1	RMSE-free	0.77	Ohms
2	Fs	29.49	Hz
3	Re	5.07	Ohms[dc]
4	Res	105.39	Ohms
5	Qms	8.36	
6	Qes	0.40	
7	Qts	0.38	
8	L1	1.19	mH
9	L2	1.27	mH
10	R2	7.17	Ohms
11	RMSE-load	0.54	Ohms
12	Vas(Sd)	291.56	liters
13	Mms	190.16	grams
14	Cms	153	$\mu\text{M}/\text{Newton}$
15	B1	21.07	Tesla-M
16	SPLref(Sd)	94.5	dB[Re]
17	Rub-index	0.02	

Method: Mass-loaded (140.00 grams)

Area (Sd): 1164.16 sq cm

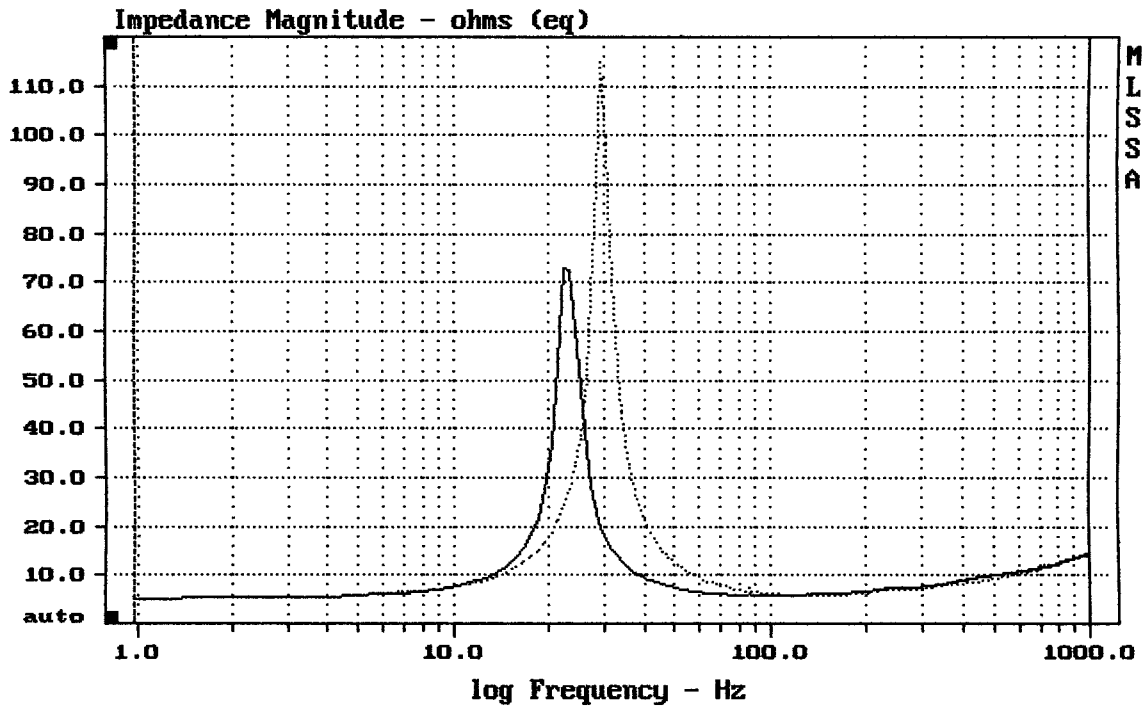
DCR mode: Measure (-0.08 ohms)

QC file: CLOSED

Analysis successful. Shift in Fs = -21.7% (-20% to -50% is recommended).

BEYMA 18G550

MLSSA: Parameters



mean: 10.56, rms: 12.72, std: 7.098, max: 114.8, min: 5.206

MLSSA: Frequency Domain