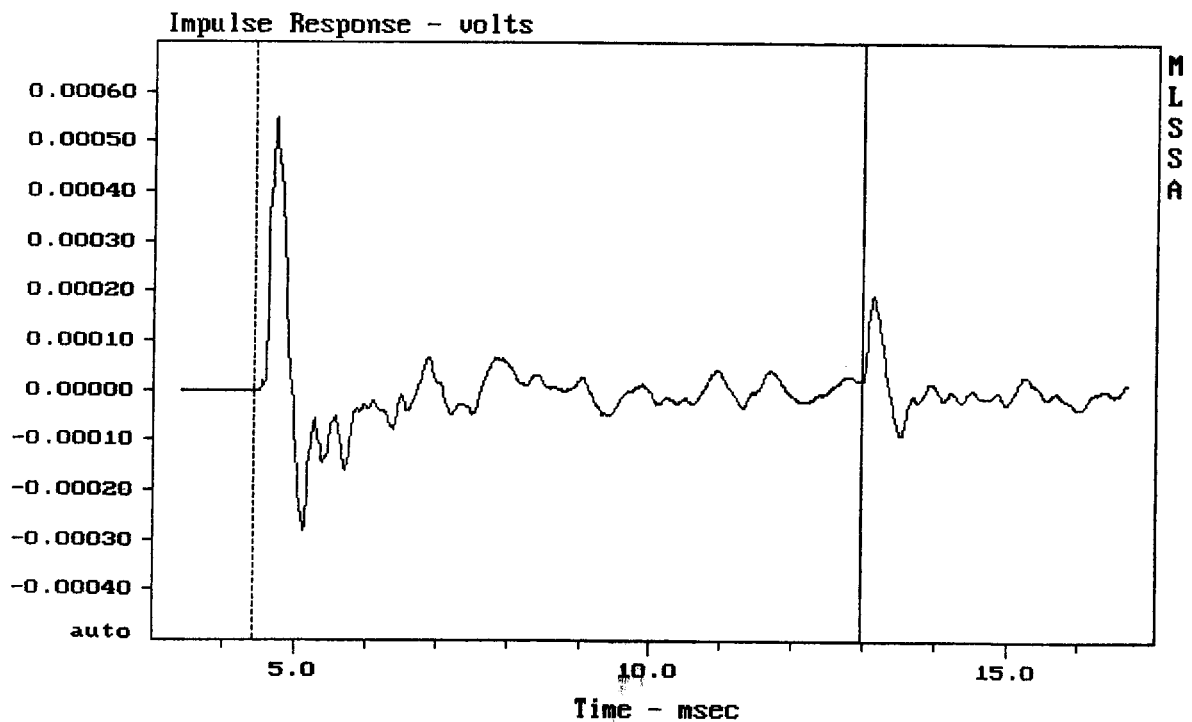


Level (100:1998 Hz) = 97.40 dB SPL/watt (8 ohms, @1.50 meters)

D.A.S. 156

MLSSA: Frequency Domain



CURSOR: y = 2.00905e-005 x = 12.9690 (1179)

D.A.S. 156

MLSSA SPO 4.0D #960903-3057-3075
 Measured Data

QC Limits

Line	Parameter	Value	Units
1	RMSE-free	0.63	Ohms
2	Fs	39.40	Hz
3	Re	5.89	Ohms[dc]
4	Res	154.45	Ohms
5	Qms	7.69	
6	Qes	0.29	
7	Qts	0.28	
8	L1	0.27	mH
9	L2	2.38	mH
10	R2	10.19	Ohms
11	RMSE-load	0.78	Ohms
12	Vas(Sd)	164.65	liters
13	Mms	101.84	grams
14	Cms	160	$\mu\text{M}/\text{Newton}$
15	B1	22.50	Tesla-M
16	SPLref(Sd)	97.2	dB[Re]
17	Rub-index	0.00	

Method: Mass-loaded (80.00 grams)

Area (Sd): 855.30 sq cm

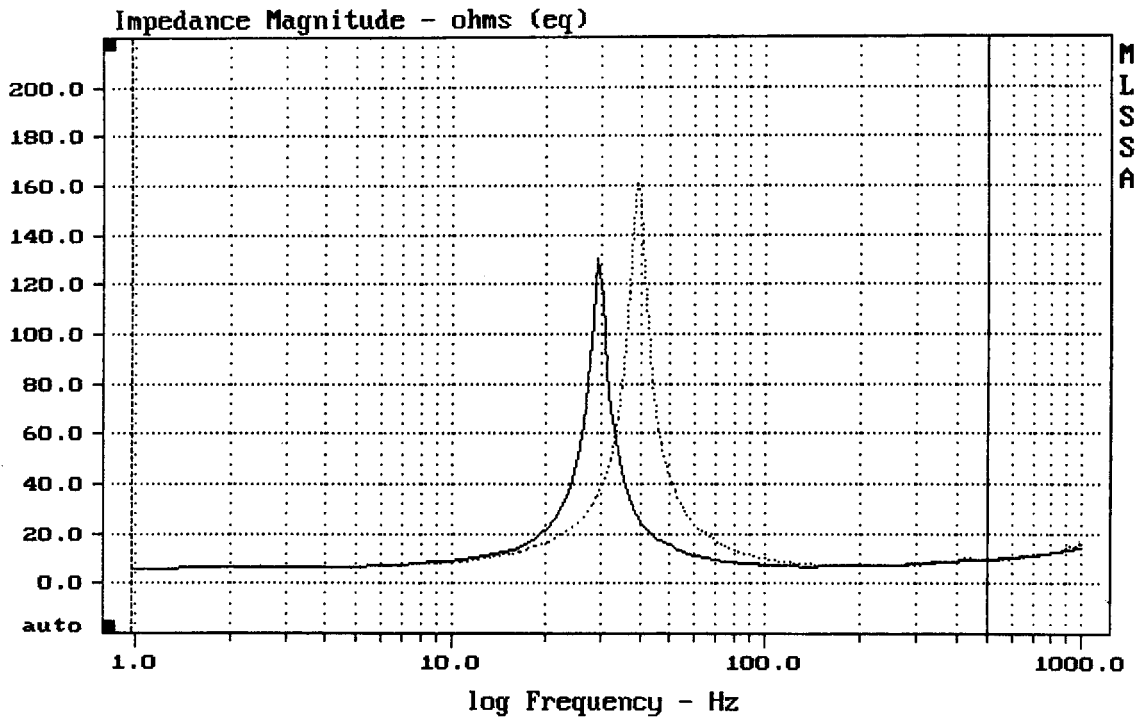
DCR mode: Measure (-0.07 ohms)

QC file: CLOSED

Analysis successful. Shift in Fs = -25.4% (-20% to -50% is recommended).

D.A.S. 15G

MLSSA: Parameters



MLSSA: Frequency Domain