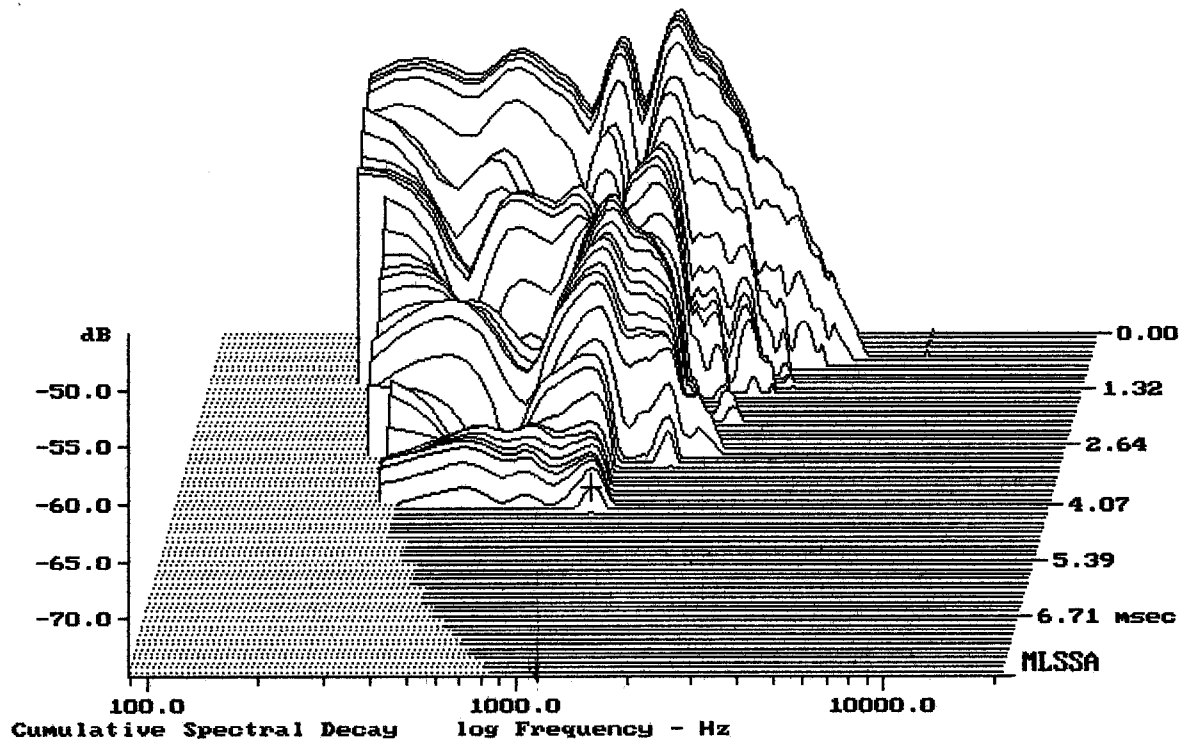


Level (55:2497 Hz) = 97.43 dB SPL/watt (8 ohms, @1.50 meters)

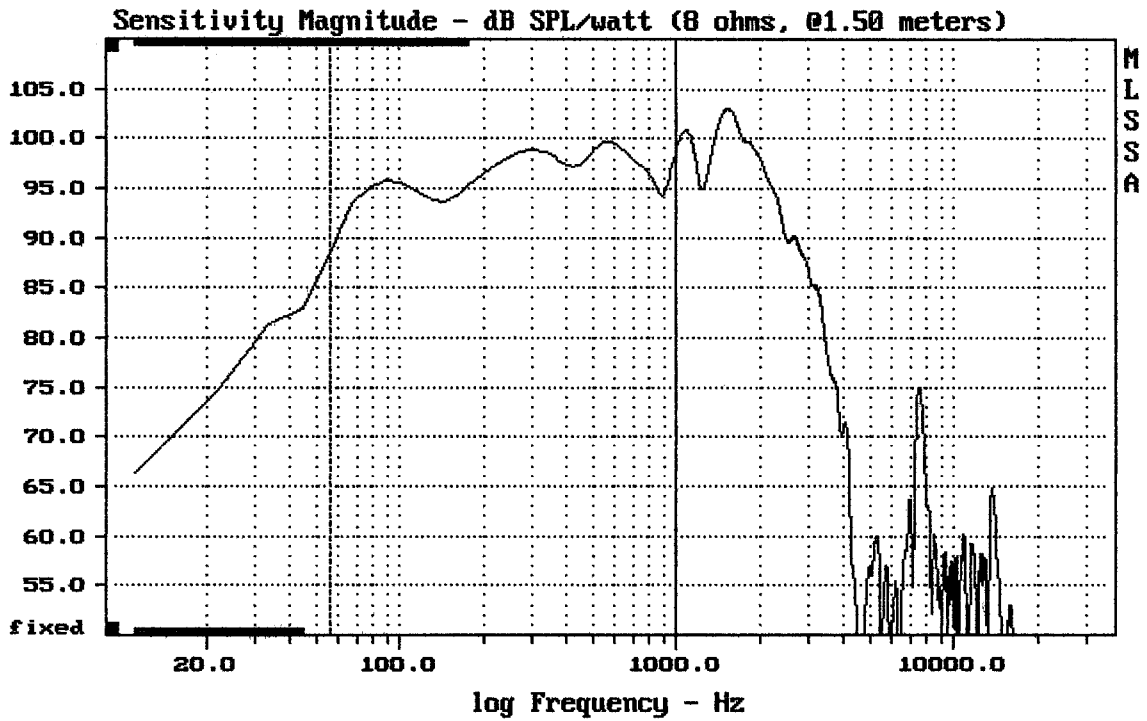
SOVEREIGN 18-500

11-21-88 7:20 PM

MLSSA: Frequency Domain



-73.04 dB, 1199 Hz (27), 4.180 msec (39)




---

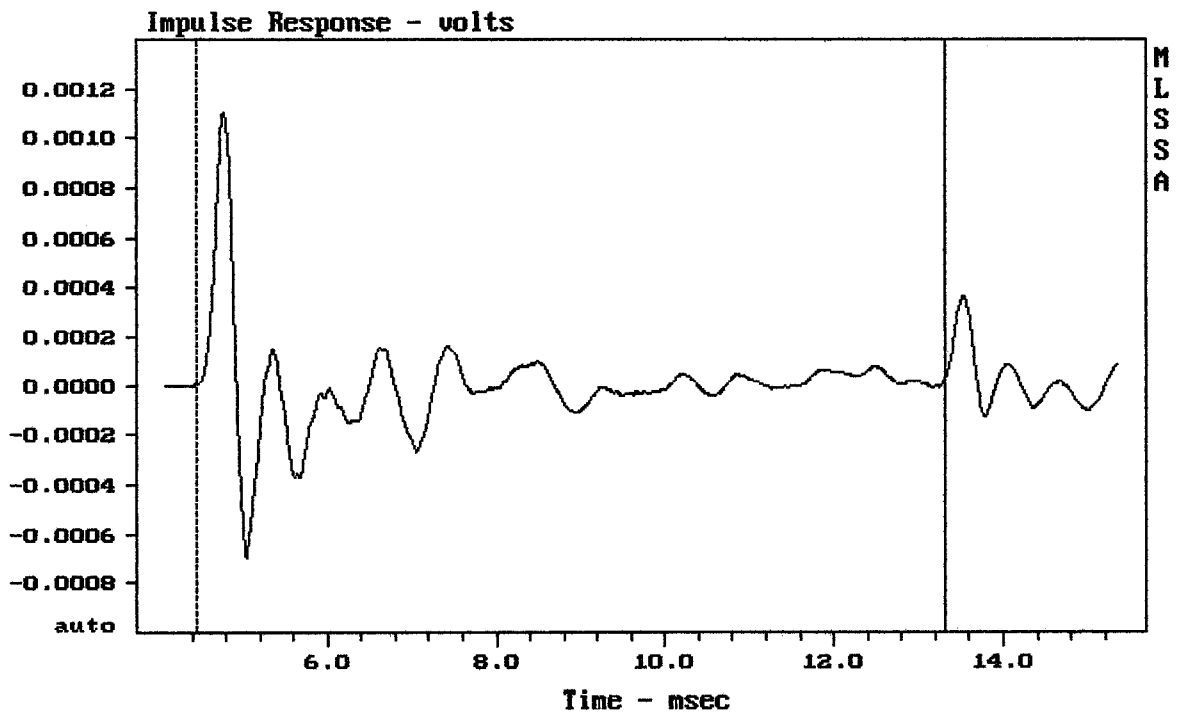
Level (55:999 Hz) = 96.69 dB SPL/watt (8 ohms, @1.50 meters)

---

SOVEREIGN 18-500

11-21-88 7:23 PM

MLSSA: Frequency Domain




---

mean: -1.049e-006, rms: 0.000193, std: 0.000193, max: 0.001106, min: -0.0006997

---

SOVEREIGN 18-500

MLSSA SPO 4.0D #960903-3057-3075 for Jiri Komon  
 Measured Data QC Limits

Line	Parameter	Value	Units
1	RMSE-free	0.80	Ohms
2	Fs	33.39	Hz
3	Re	5.56	Ohms[dc]
4	Res	76.10	Ohms
5	Qms	7.69	
6	Qes	0.56	
7	Qts	0.52	
8	L1	0.46	mH
9	L2	1.88	mH
10	R2	15.58	Ohms
11	RMSE-load	0.92	Ohms
12	Vas(Sd)	455.09	liters
13	Mms	100.04	grams
14	Cms	227	$\mu\text{M}/\text{Newton}$
15	B1	14.41	Tesla-M
16	SPLref(Sd)	96.6	dB[Re]
17	Rub-index	0.01	

Method: Mass-loaded (80.00 grams)

Area (Sd): 1194.59 sq cm

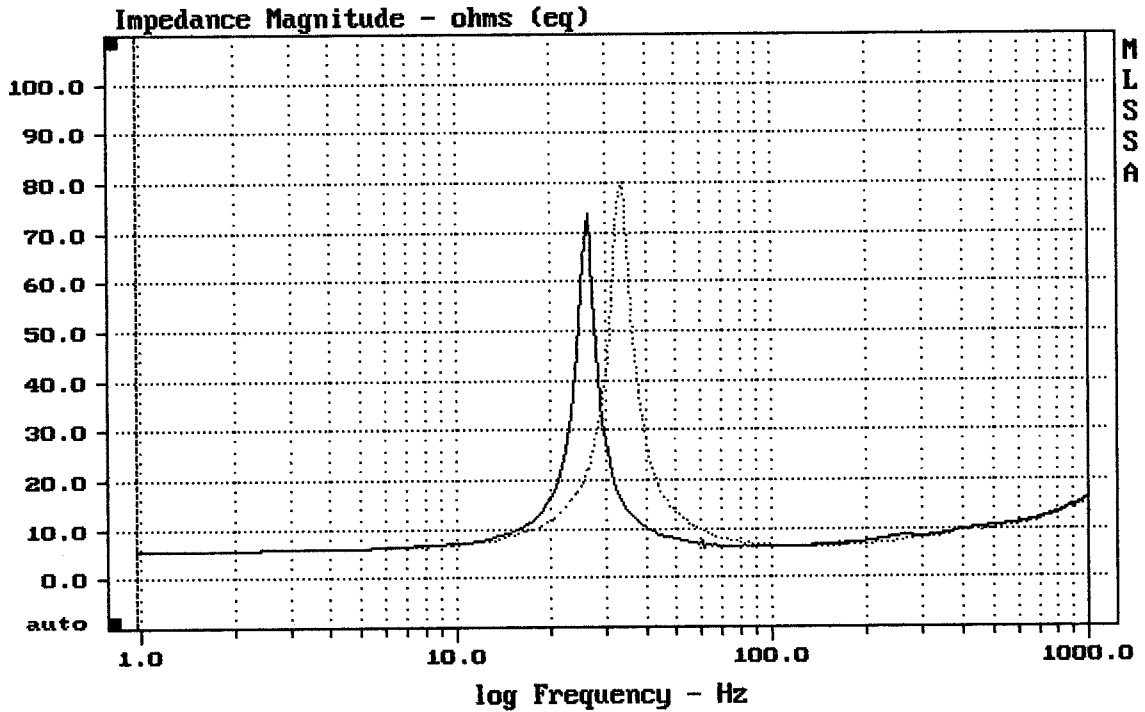
DCR mode: Measure (-0.12 ohms)

QC file: CLOSED

Analysis successful. Shift in Fs = -22.0% (-20% to -50% is recommended).

SOVEREIGN 18-500

MLSSA: Parameters



mean: 11.11, rms: 12.5, std: 5.734, max: 79.81, min: 5.681

DTTO

11-20-88 8:22 PM

MLSSA: Frequency Domain