

Measured Data

QC Limits

Line	Parameter	Value	Units
1	RMSE-free	1.05	Ohms
2	Fs	35.71	Hz
3	Re	5.64	Ohms[dc]
4	Res	166.55	Ohms
5	Qms	10.07	
6	Qes	0.34	
7	Qts	0.33	
8	L1	1.49	mH
9	L2	2.74	mH
10	R2	9.08	Ohms
11	RMSE-load	1.10	Ohms
12	Vas(Sd)	312.23	liters
13	Mms	280.55	grams
14	Cms	71	$\mu\text{M}/\text{Newton}$
15	B1	32.27	Tesla-M
16	SPLref(Sd)	98.0	dB[Re]
17	Rub-index	0.01	

Method: Mass-loaded (140.00 grams)

Area (Sd): 1772.05 sq cm

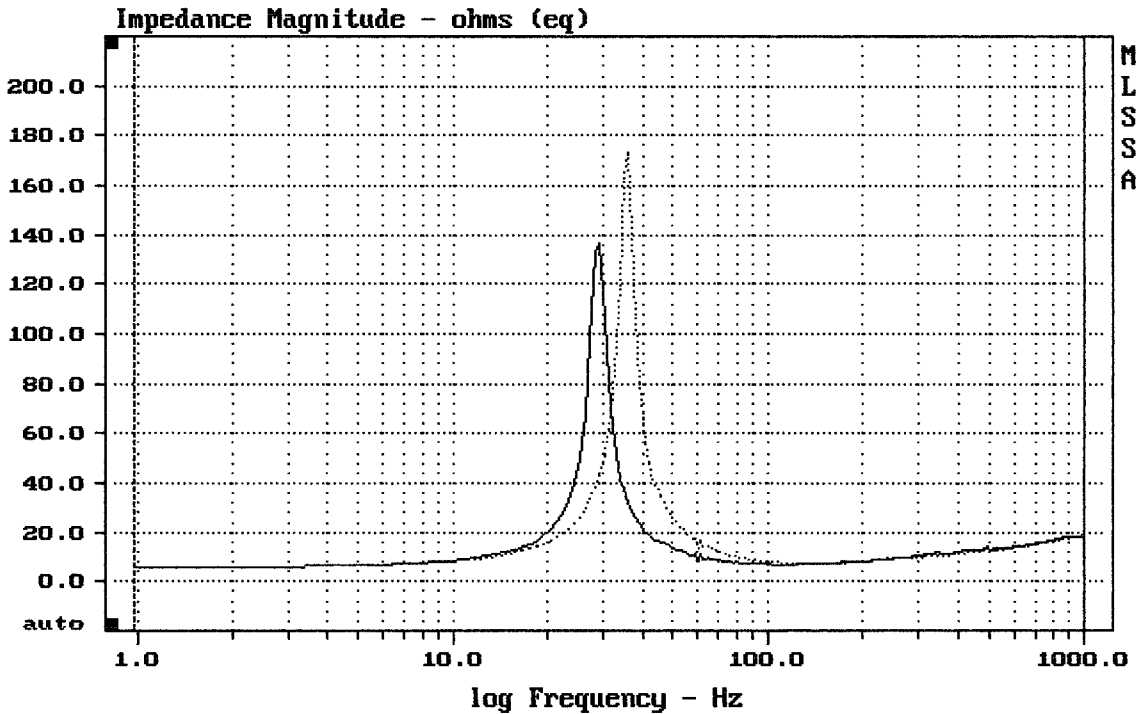
DCR mode: Measure (-0.10 ohms)

QC file: CLOSED

Analysis successful. Shift in Fs = -18.9% (-20% to -50% is recommended).

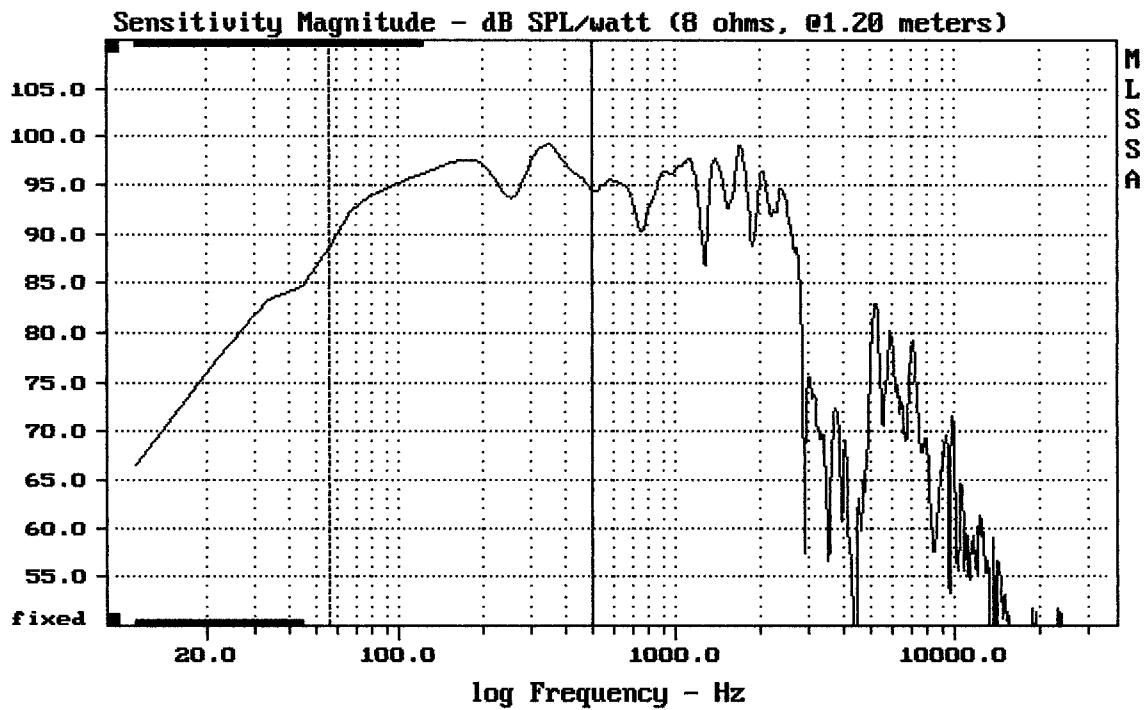
LF21N451

MLSSA: Parameters



mean: 14.3, rms: 18.12, std: 11.12, max: 173.6, min: 5.798

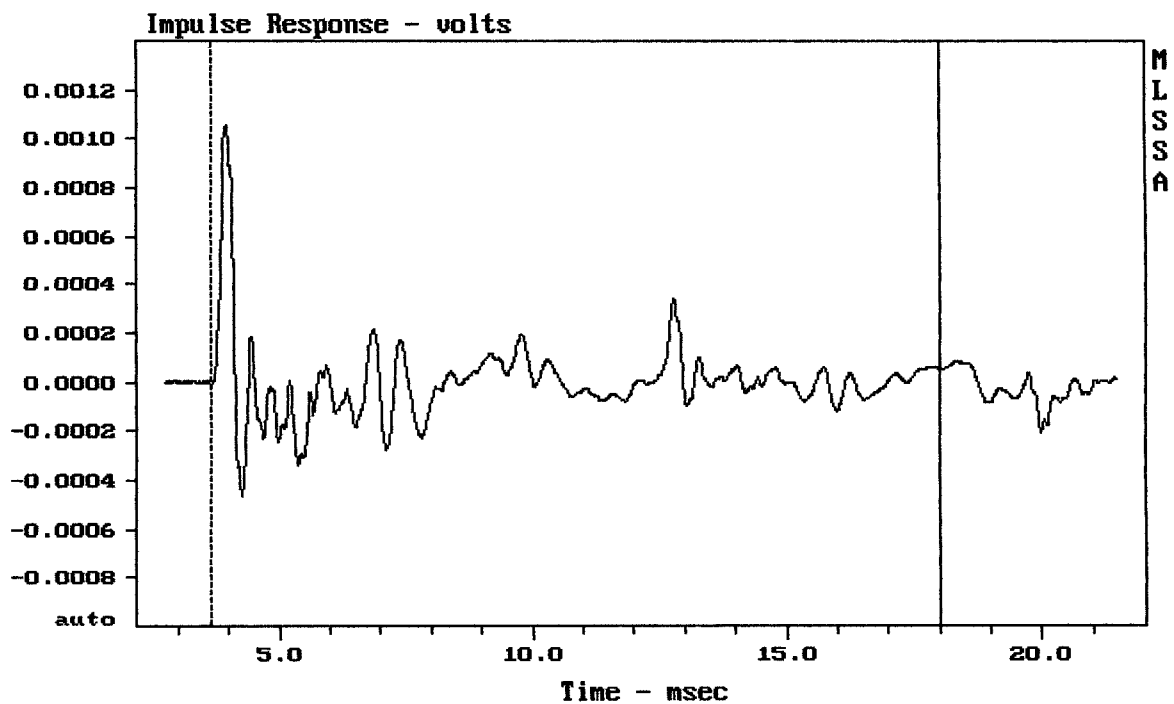
MLSSA: Frequency Domain



Level (55:499 Hz) = 95.93 dB SPL/watt (8 ohms, @1.20 meters)

RCF LF21N451

MLSSA: Frequency Domain



CURSOR: y = 4.96484e-005 x = 18.0290 (1639)

RCF LF21N451