

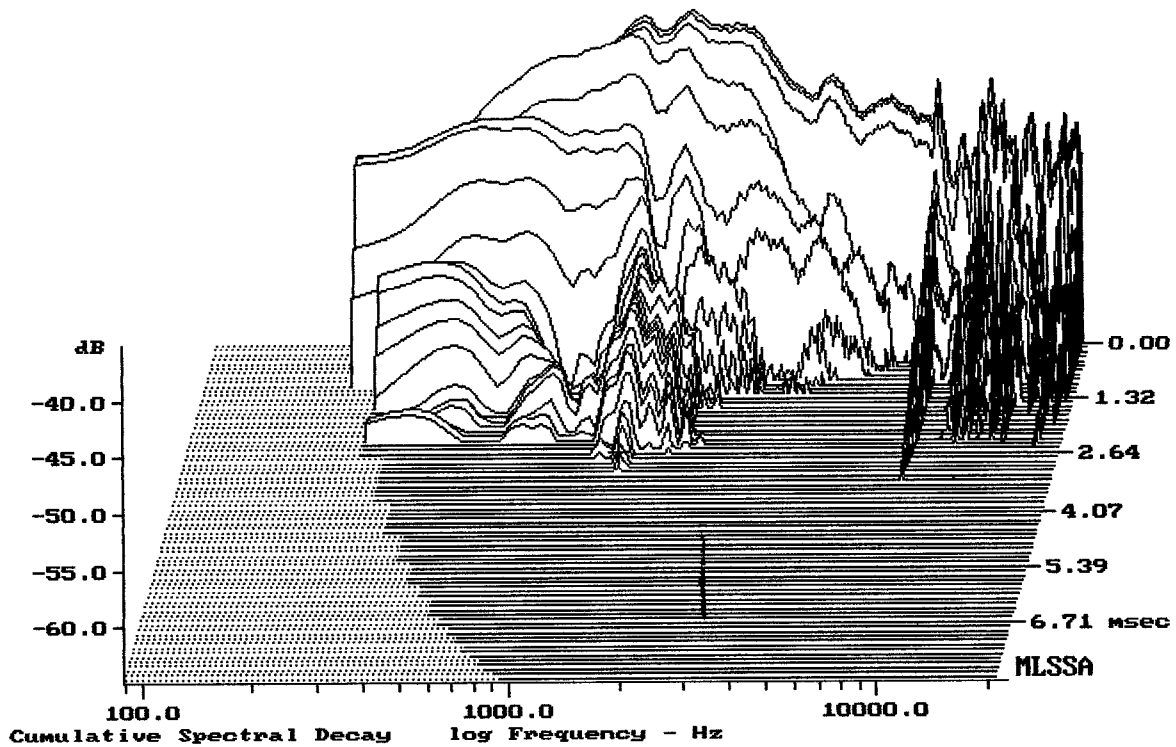

---

Level (699:20497 Hz) = 109.02 dB SPL/watt (16 ohms, @1.00 meters)

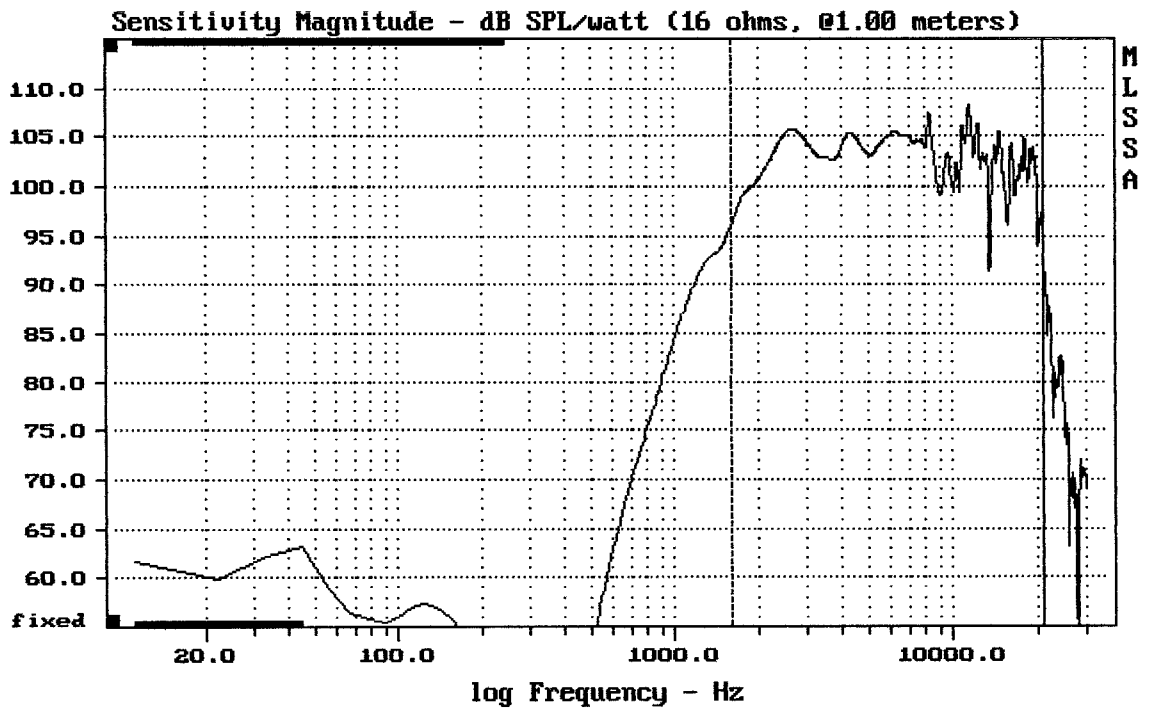
---

D3300TI 16ohm + C8045

MLSSA: Frequency Domain



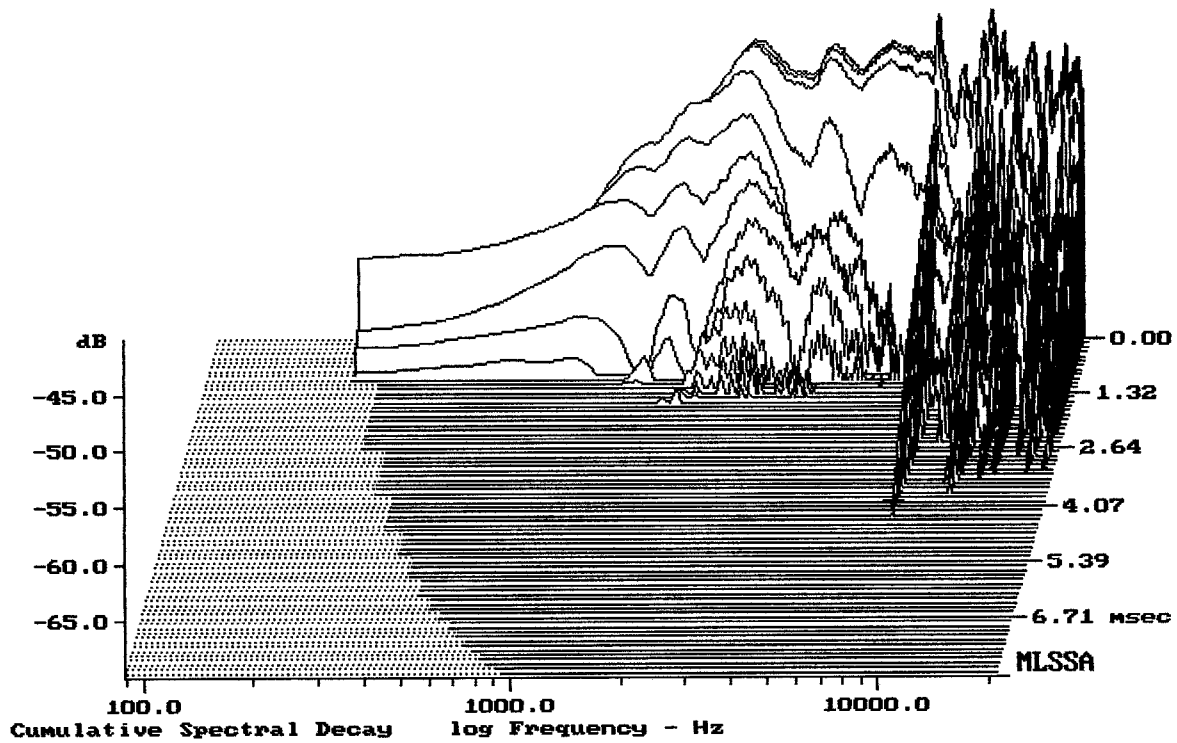
-63.74 dB, 1376 Hz (31), 2.970 msec (28)



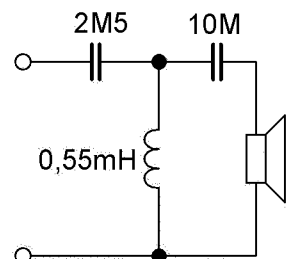
Level (1598:21007 Hz) = 103.50 dB SPL/watt (16 ohms, @1.00 meters)

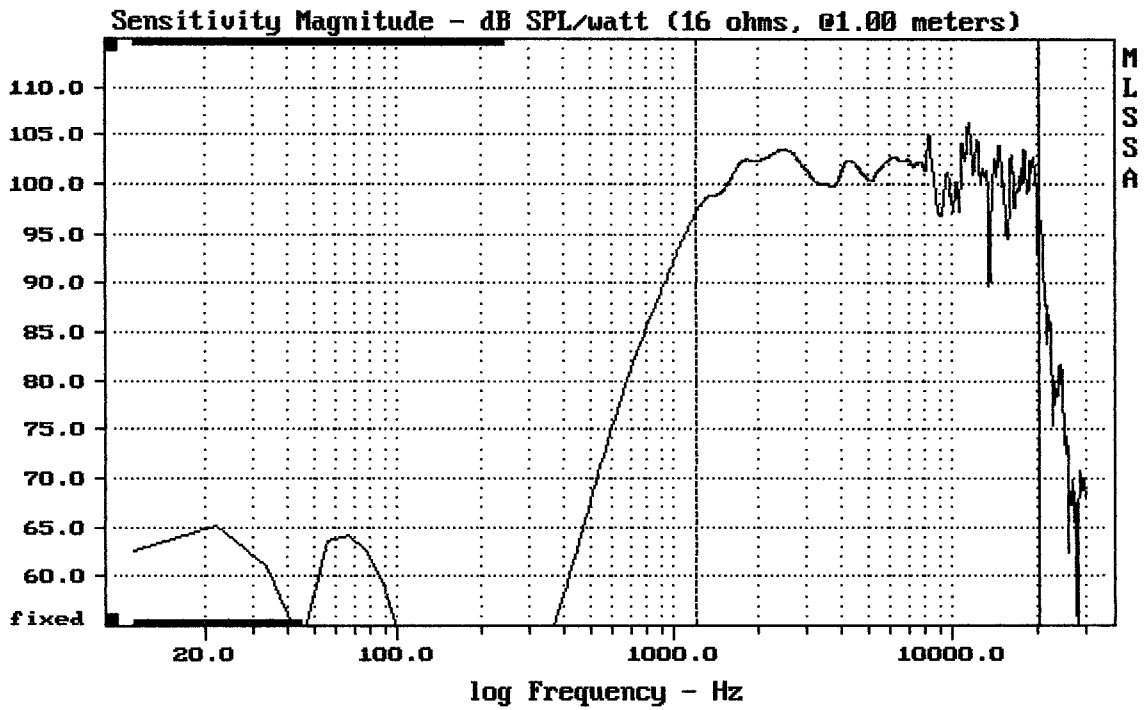
D3300TI 16ohm + C8045

MLSSA: Frequency Domain



-69.12 dB, 8256 Hz (186), 4.180 msec (39)

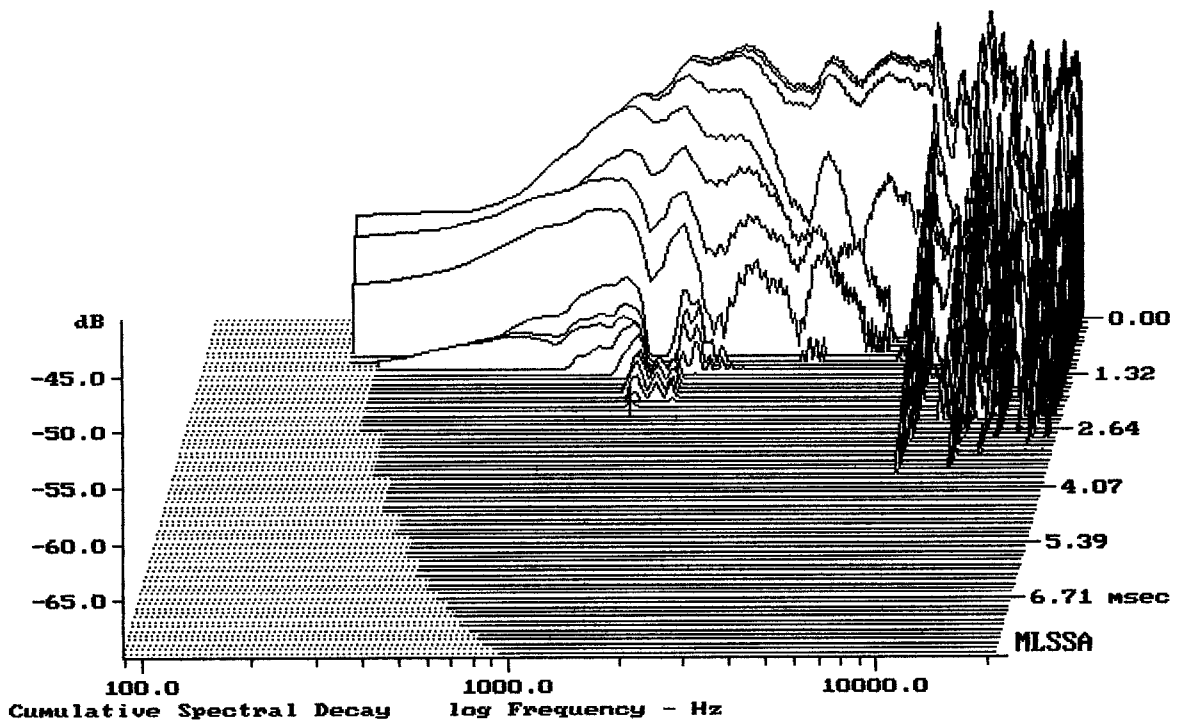




Level (1199:20497 Hz) = 101.46 dB SPL/watt (16 ohms, @1.00 meters)

D3300TI 16ohm + C8045

MLSSA: Frequency Domain



-69.51 dB, 1376 Hz (31), 2.090 msec (20)

