

Plugs & Jacks



Content

Page

| | | | |
|--|----|--|----|
| Plugs: | | Jacks: | |
| 1/4" Phone Plugs - PX Series | 29 | Locking 1/4" Cable and Chassis Jacks | 35 |
| 1/4" Phone Plugs - Silent Plug | 30 | 1/4" Vertical Jacks | 36 |
| 1/4" Professional Phone Plugs - P Series | 31 | M Jacks | 37 |
| MIL/B-Gauge Type Phone Plugs | 31 | Slim Jacks | 38 |
| 0.173" Bantam Type Miniature Plugs | 32 | Stacking Jacks | 39 |
| 3.5 mm Right-Angle Stereo Plug | 32 | Technical Data | 40 |
| Technical Data | 33 | Ordering Information | 41 |
| Accessories | 33 | | |
| Ordering Information | 34 | | |

Introduction

The Neutrik® plug and jack program offers a wide range of professional phone connectors including 1/4", 3.5 mm, MIL/B-gauge style and TT or bantam style plugs. The jack range offers an exceptional "slim" 1/4" PCB jack that is almost 20% smaller than most other designs. The heavy duty M line combines a wide range of options such as three different nose forms and four styles of contacts including 3 PCB and one solder tab. It also includes a 1/4" chassis and cable jack line with the secure locking feature, well known from the XLR range. All jacks are manufactured from strong high-grade thermoplastics and are available in all common versions which make them suitable for audio and industrial applications.

The plug line features:

- Mono (TS) and Stereo (TRS) plugs
- Straight and right-angle versions
- Rugged diecast shell in Nickel or black Chromium
- Nickel or gold plated contacts
- Chuck type strain relief
- Precision machined plugfinger without rivets
- Coloured boots and rings for coding
- True 3.5 mm stereo plug
- Silent Plug for instrument (guitar) applications

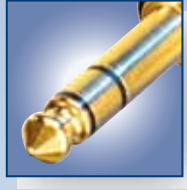
All plugs and jacks are specified to IEC 60603-11 and EIA RS-453 or the respective MIL standard.

Neutrik® offers also a special jack version which is a combined 3 pole XLR receptacle and a 1/4" phone jack for balanced mic or line inputs in one XLR shell. This "one for two" panel mount offers substantial cost saving, labour and material. For more information on the Combo products see page 20 or visit our website at www.neutrik.com.

L o o k f o r t h e L o g o



Plugs



1/4" Phone Plug - PX and PRX Series



NP2X



NP3X-B



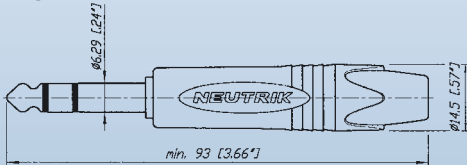
NP3X + PXR-5



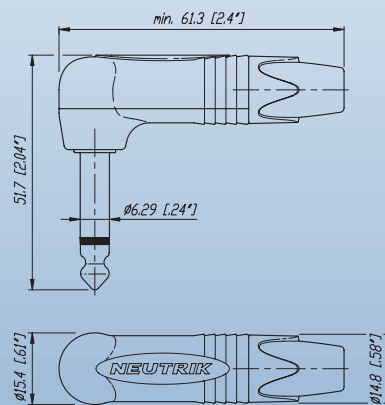
NP2RX-B

- Slim 1/4" plug with million fold proven chuck type strain relief
- Precision machined one piece contacts - no rivets
- Sleek attractive design for best handling convenience
- 14.5 mm only in diameter (right angle 15.4 mm) - serves highest packing density of 15.88 mm jack pitch
- Nickel or gold plugfinger in mono (TS) and stereo (TRS)

NP3X



NP2RX



15.88 mm jack pitch:



t o i d e n t i f y t h e o r i g i n a l

Plugs



Attention!

Use only for instrument (guitar) applications.
Connecting an amplifier output may blow your amp!

1/4" Phone Plug - Silent Plug

NEW



Detail Silent Switch:

Hermetically sealed

Gold plated contacts

REED SWITCH

- Cannot corrode or pollute
- No wear, constant contact resistance
- Decoupled from switching mechanism

Moving magnet

- Avoid pops and squeals
- Hermetically sealed switching contacts
- Lifetime beyond 10'000 mating cycles
- Slim right-angle plug with industry proven and reliable chuck type cable strain relief
- Sleek attractive design for convenient handling and connections

Design Criteria

The Silent Plug automatically mutes (shorts) an instrument (guitar) cable to avoid pops and squeals when changing the instrument (guitar) under load.

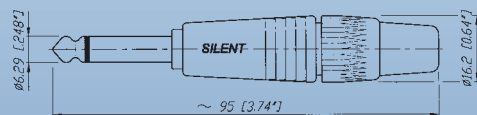
The integrated silent switch (pat. pending) is based on REED-technology and guarantees a lifetime beyond 10'000 mating cycles.

Springloaded moving magnet

Reed Switch

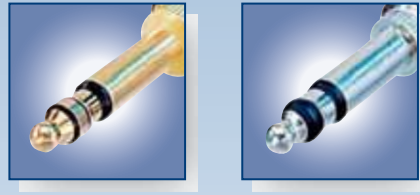
Gold plated contacts

NP2C-AU-SILENT



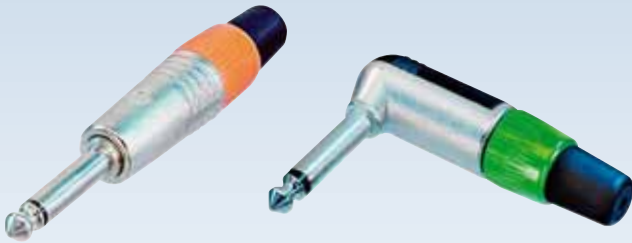
Quality Thinking

Plugs



1/4" Professional Phone Plugs

MIL/B-Gauge Type Phone Plugs



NP2C + BSP-3

NP2RCS + BSP-5

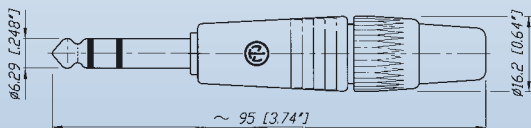
NP3TB-R

NP3CM-B

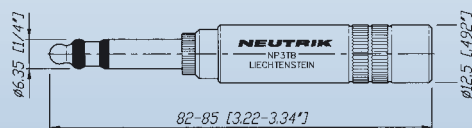
- Available in mono (TS) or stereo (TRS)
- Meets EIA / IEC standards
- Unique plug finger design without rivets
- Sturdy diecast metal shell
- Excellent Neutrik® chuck type strain relief

- 1/4" "B-Gauge" and "MIL" Type Plugs
- All metal design, chuck type strain relief, no rivets
- Meet all prevailing standards
- Available as plug fingers only for overmolding

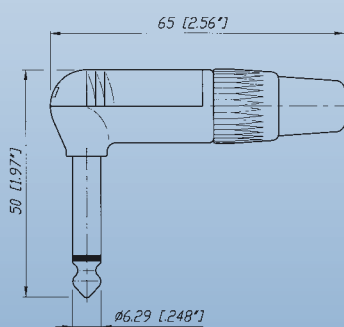
NP3C



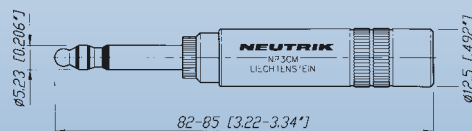
NP3TB-B



NP2RCS



NP3CM-B



- Quality Design

Plugs



0.173" Bantam Type Miniature Plugs

3.5 mm Right-Angle Stereo Plug



NP3TT-1-B



NP3TT-2



NTP3RC

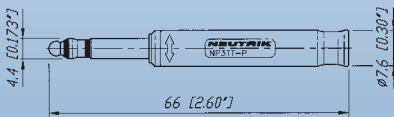
- Very robust ergonomic design
- Gold contact version in combination with the NJ3TTA jack eliminates contact problems due to corrosion or dirt
- The single plug NP3TT-P and the dual bantam plug NP3TT-2 are made for assembling with a standard HEX crimping tool as used with coax cables
- Solder termination for T + R, crimp termination for sleeve contact

- The only available 3.5 mm plug with chuck type strain relief
- All metal housing - reliable and robust
- Easy to assemble, simple to use
- Slim design - space saving
- Excellent cable protection
- All Nickel or black housing, available with gold plated contacts

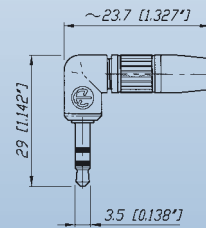
NP3TT-1



NP3TT-P



NTP3RC



Quality Thinking

Technical Data

Specifications

1/4" Phone Plugs
& SILENT Plug

MIL / B-gauge Type

0.173" Bantam Type

3.5 mm Stereo Plugs

Electrical

| | | | | | |
|------------------------|--------------------------------|---|---|---|---|
| Rated current: | depends on mating connector | • | • | • | • |
| Contact resistance: | depends on mating connector | • | • | • | • |
| Insulation resistance: | - initial: > 2 GΩ | • | • | • | • |
| | - after damp heat test: ≥ 1 GΩ | • | • | • | • |
| Dielectric strength | 1 kV dc | • | • | • | • |

Mechanical

| | | | | | |
|--------------------------------|------------------|-------|----------------|---------|---------|
| Lifetime > 1'000 mating cycles | | • | • | • | • |
| Wiring: | solder terminals | • | • | • | • |
| Wire size | mm ² | 1 | 1 (NP3CM: 0.5) | 0.25 | 0.22 |
| | AWG | 18 | 18 (NP3CM: 20) | 24 | 24 |
| Cable O.D.: | mm | 4 - 7 | 4 - 7 | 4.8 max | 2 - 4.5 |

Materials

| | | | | |
|--|---|---|--|--|
| Shell: | Zinc diecast (ZnAl4Cu1) Ni or black Cr plated | Brass (CuZn39Pb3) black or red coated | Brass (CuZn39Pb3) 2 μm Ni (Su) plated PA 6 30 % GR | Zinc diecast (ZnAl4Cu1) Ni or black Cr plated PA 6.6 15% GR |
| Insulation: Polyamide (PA 6.6 30 % GR) | • | • | • | • |
| Contacts: Brass (CuZn39Pb3) 2 μm Ni (Su) or Au plated | • • or Au | • • or Brass | • (Tip: CuSn6) 2 μm TRIBOR® (NiP-AuCo) | • • or Au |
| Chuck: | POM | POM | - | POM |
| Bushing: | POM + PU | - | - | CuZn39Pb3 + PU (Ni or black Chrome) |

Environmental

| | | | | |
|--|---|---|---|---|
| Temperature range: -20 °C to +65 °C | • | • | • | • |
| Solderability: Complies with IEC 68-2-20 | • | • | • | • |

Accessories



BSP-*



BPX-*



PXR-*



BSTT-*



BSTP-*



PCR-*

| | | | |
|--------|-----------------------------------|--------|--|
| BSP-* | Coloured bushing for NP*C Series | BSTP-* | Coloured sleeves for NP3TT-P Series |
| BPX-* | Coloured bushing for NP*X Series | PXR-* | Coloured marking rings for NP*X Series |
| BSTT-* | Coloured sleeves for NP3TT Series | PCR-* | Coloured marking rings for NP*C Series |

*: 0 - Black, 1- Brown, 2 - Red, 3 - Orange, 4 - Yellow, 5 - Green, 6 - Blue, 7 - Violet, 8 - Grey, 9 - White; Must be ordered in multiples of 100.

Assembly tool

| | |
|--------------|--|
| HX-TT-1 | Assembly and crimp tool for NP3TT-1/AU |
| HX-R-BNC | HEX crimp tool for NP3TT-P* |
| DIE-R-BNC-PJ | HEX crimp die for NP3TT-P* (5.4 mm) |

- Quality Design

Ordering Information

| Part Number | Shell | Contacts | Standards Compatibility | Remarks |
|-------------|-------|----------|----------------------------|---------|
|-------------|-------|----------|----------------------------|---------|

1/4" Professional Phone Plugs - PX and PRX Series

| | | | | | |
|----------|-----------|----------|--------|---------------------------|--|
| NP2X | NP2RX | Nickel | Nickel | IEC 60603-11 / EIA RS-453 | Mono plug, black bushing, chuck type strain relief |
| NP2X-BAG | NP2RX-BAG | Black Cr | Nickel | ● | Mono plug, black bushing, chuck type strain relief |
| NP2X-B | NP2RX-B | Black Cr | Gold | ● | Mono plug, black bushing, chuck type strain relief |
| NP3X | NP3RX | Nickel | Nickel | ● | Stereo plug, black bushing, chuck type strain relief |
| NP3X-BAG | NP3RX-BAG | Black Cr | Nickel | ● | Stereo plug, black bushing, chuck type strain relief |
| NP3X-B | NP3RX-B | Black Cr | Gold | ● | Stereo plug, black bushing, chuck type strain relief |
| *-D | | | | | Bulk packed to be ordered in multiples of 100 |

SILENT Guitar Plug

| | | | | |
|-----------------|------------|------|-------------------------|--|
| NP2C-AU-SILENT | red coated | Gold | IEC 60603-11/EIA RS-453 | Mono plug , chuck-type strain relief, silent switch |
| NP2RX-AU-SILENT | red coated | Gold | IEC 60603-11/EIA RS-453 | right angle mono plug, chuck-type strain relief, silent switch |

1/4" Professional Phone Plugs - PC Series

| | | | | |
|---------------|------------------------|------------------|-------------------------|---|
| NP2C | Nickel | Nickel | IEC 60603-11/EIA RS-453 | Mono plug, black bushing, chuck type strain relief |
| NP3C | Nickel | Nickel | ● | Stereo plug, black bushing, chuck type strain relief |
| NP2C-BAG | Black Cr | Nickel | ● | Mono plug, black bushing, chuck type strain relief |
| NP3C-BAG | Black Cr | Nickel | ● | Stereo plug, black bushing, chuck type strain relief |
| NP2C/B | Black Cr | Gold | ● | Mono plug, black bushing and gold contacts, chuck type strain relief |
| NP3C/B | Black Cr | Gold | ● | Stereo plug, black bushing and gold contacts, chuck type strain relief |
| NP2C-BAG-T-AU | Black Cr | Nickel + T: Gold | ● | Mono plug, black bushing with gold tip, chuck type strain relief |
| NP2C-T10AA | Nickel | Nickel | ● | Built-in 1:10 transformer to convert mic level to guitar inputs |
| NP2RCS | Nickel + black plastic | Nickel | ● | Mono right-angle plug, black bushing, chuck type strain relief |
| NP3RCS | Nickel + black plastic | Nickel | ● | Stereo right-angle plug, black bushing, chuck type strain relief |
| NP*C-D | | | | Bulk packed to be ordered in multiples of 100 |
| NP2C-T10AA | Nickel | Nickel | ● | Mono plug, red bushing, with built-in transformer to convert microphone levels to guitar inputs, chuck type strain relief |

MIL/B-gauge Type Phone Plugs

| | | | | |
|---------|-------|--------|----------------|--|
| NP3TB-B | Black | Nickel | B-GAUGE BP0316 | 1/4" B-Gauge plug, chuck type strain relief |
| NP3TB-R | Red | Nickel | ● | 1/4" B-Gauge plug, chuck type strain relief |
| NP3TM-B | Black | Nickel | MIL-P-642/2 | 1/4" MIL plug , chuck type strain relief |
| NP3TM-R | Red | Nickel | ● | 1/4" MIL plug , chuck type strain relief |
| NP2CM-B | Black | Brass | MIL-P-642/4 | Mono 1/4" MIL plug, chuck type strain relief |
| NP2CM-R | Red | Brass | ● | Mono 1/4" MIL plug, chuck type strain relief |
| NP3CM-B | Black | Brass | MIL-P642/5A | Stereo 5.23 mm (0.206") MIL plug, chuck type strain relief |
| NP3CM-R | Red | Brass | ● | Stereo 5.23 mm (0.206") MIL plug, chuck type strain relief |

0.173" Bantam Type Miniature Plugs

| | | | | |
|--------------|------------------------|--------|--------------|---|
| NP3TT-1-B | Nickel + black plastic | Nickel | MIL-P-642/13 | 4.4 mm (0.173") Bantam plug with solder contacts, black sleeve |
| NP3TT-1-R | Nickel + red plastic | Nickel | ● | 4.4 mm (0.173") Bantam plug with solder contacts, red sleeve |
| NP3TT-AU-B | Nickel + black plastic | Gold | ● | 4.4 mm (0.173") Bantam plug with solder contacts, black sleeve |
| NP3TT-AU-R | Nickel + red plastic | Gold | ● | 4.4 mm (0.173") Bantam plug with solder contacts, red sleeve |
| NP3TT-P-B | Black plastic | Nickel | ● | 4.4 mm (0.173") Bantam plug with solder contacts, black sleeve |
| NP3TT-P-R | Red plastic | Nickel | ● | 4.4 mm (0.173") Bantam plug with solder contacts, red sleeve |
| NP3TT-P-AU-B | Black plastic | Gold | ● | 4.4 mm (0.173") Bantam plug with solder contacts, black sleeve |
| NP3TT-P-AU-R | Red plastic | Gold | ● | 4.4 mm (0.173") Bantam plug with solder contacts, red sleeve |
| NP3TT-2 | Black plastic | Nickel | ● | 4.4 mm (0.173") Twin Bantam plug with solder contacts, black sleeve |

3.5 mm Right-Angle Stereo Plug

| | | | | |
|----------|----------|--------|--|--|
| NTP3RC | Nickel | Nickel | | 3.5 mm audio plug with chuck and bushing |
| NTP3RC-B | Black Cr | Gold | | 3.5 mm audio plug with chuck and bushing |

Look for the Logo



Locking Jacks



Locking 1/4" Cable Jacks

Locking 1/4" Chassis Jacks



NJ3FC6



NJ3FC6-BAG



NJ3FP6C

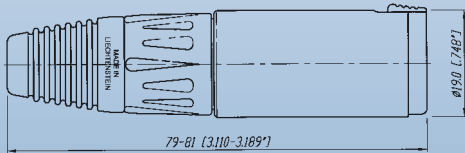


NJ3FP6C-BAG

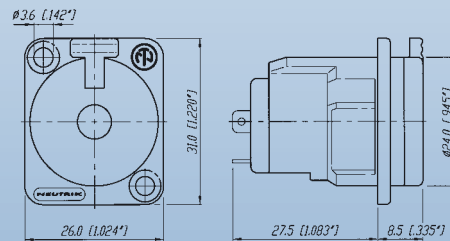
- Securely locking cable jack
- Mates with all mono or stereo plugs specified to EIA RS-453
- Extremely robust and reliable
- Excellent Neutrik® cable retention
- Coloured boots available in 10 colours
- For cable O.D. up to 8 mm

- Mates with all mono or stereo plugs specified to EIA RS-453
- Dimensionally compatible with D Series (31 x 26 mm)
- Securely locking chassis jack
- Solder terminals
- Special version with black plastic shell
- Choasable grounding option

NJ3FC6



NJ3FP6C



t o i d e n t i f y t h e o r i g i n a l



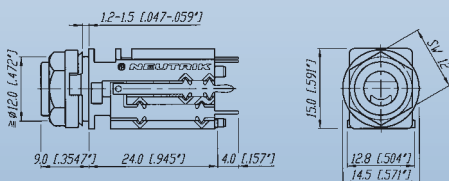
1/4" Vertical Jacks



NJ*FD-V

- Quick Cap Fixing System reduces assembly time drastically through snapping mounting cap
- Retention force is provided by a special spring element, independent from contacts
- All common circuits available
- Two versions for mating of plugs acc. to EIA RS-453 (NJ*FD-V) or B-gauge BP0316 (NJ*TB-V)

NJ*FD-V



* ... 2, 3, 5, 6

Horizontal PCB Jacks



M Jacks



NMJ4HHD2



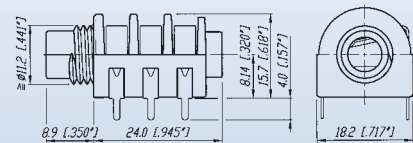
NMJ2HC-S



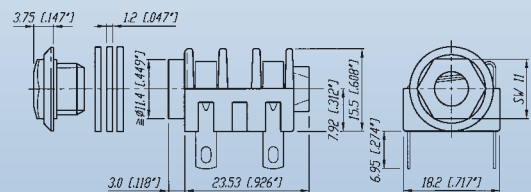
NMJ6HFD2-SAU

- Wide body and extremely durable contacts
- Available in all common versions:
 - mono
 - stereo
 - switched
 - unswitched
- Hardwire and PCB version
- Nose type in
 - half threaded
 - fully threaded
 - chrome ferrule
- Full threaded and chrome nose M Jacks are supplied with washer and fixing nut
- Mounting hardware for half threaded nose must be ordered separately
- Fascia appearance in plastic or chrome

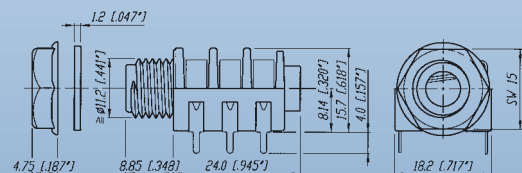
NMJ4HHD2



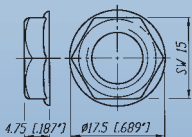
NMJ4HC-S



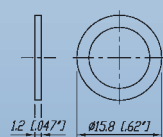
NMJ6HFD2



NRJ-NUT-B



NRJ-WB (washer)



- Quality Design

Horizontal PCB Jacks



Slim Jacks



NRJ4HH-1

NRJ6HF-1

NRJ6HM-1-AU

NRJ-NUT-B

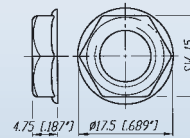
NRJ-NUT-MK

NRJ-NUT-MS

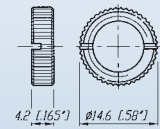
NRJ-NUT-MN
(Metal Nose only)

- High board packing densities
- Nose type in
 - half thread
 - fully threaded
 - metal
- Meeting the requirements of EMC rules through efficient chassis grounding system
- Retention spring ensures optimum grip on inserted plugs, avoiding the chance of lost connection
- All Slim line jacks have PCB horizontal mount pins
- Mounting nuts in different versions available - must be ordered separately

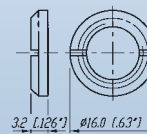
NRJ-NUT-B



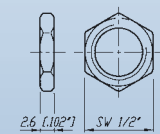
NRJ-NUT-MK



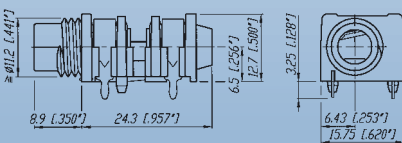
NRJ-NUT-MS



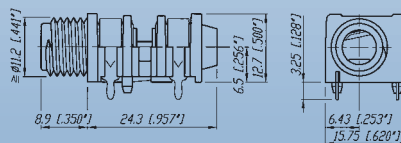
NRJ-NUT-MN
(Metal Nose only)



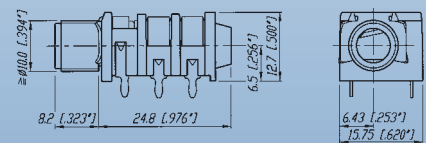
NRJ4HH-1



NRJ4HF-1



NRJ6HM-1



Quality Thinking

PCB Mount Stacking Jacks



Stacking Jacks



NSJ8HC



NSJ12HL



NSJ12HH-1

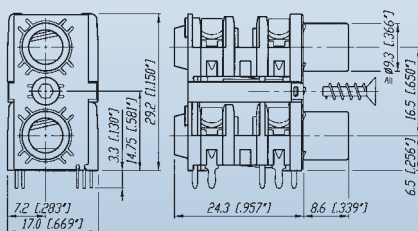


NSJ12HF-1

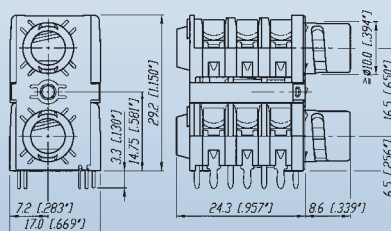
- Mono and stereo dual slim jack socket for PCB mounting with switch contacts
- Mounting method by either two quick fix or threaded nuts or one single center screw

- Highest board packing density as two jacks are in a single footprint, fit in 1 RU
- Version in fully and half threaded nose, full nose and quick-fit

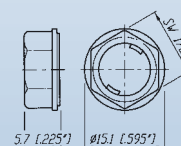
NSJ8HC



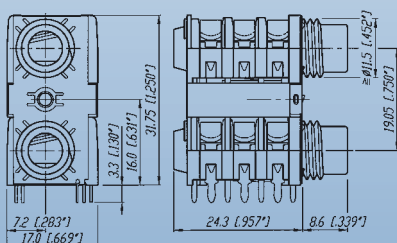
NSJ12HL



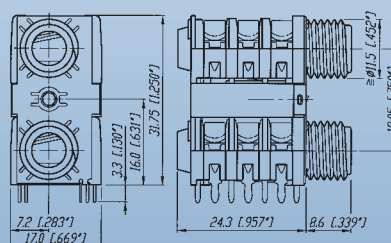
Quick fix nut



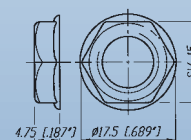
NSJ12HH-1



NSJ12HF-1



NRJ-NUT-B



- Quality Design

T e c h n i c a l D a t a

Specifications

| | | Vertical Jack | Locking Cable & Chassis Jack | M Jack | Slim Jack | Stacking Jack |
|-------------------------------|------------------|---------------|------------------------------|--------------|--------------|---------------|
| Electrical | | | | | | |
| Contact resistance | - initial: | < 10 mΩ | < 6 mΩ | < 15 mΩ | < 10 mΩ | - |
| | - Top row: | - | - | - | - | < 15 mΩ |
| | - Bottom row: | - | - | - | - | < 10 mΩ |
| Switch contact resistance: | - for silver: | - | - | < 30 mΩ | < 25 mΩ | - |
| | - for gold: | < 15 mΩ | - | - | < 10 mΩ | - |
| | - Top row: | - | - | - | - | < 15 mΩ |
| | - Bottom row: | - | - | - | - | < 10 mΩ |
| Insulation resistance: | ≥ 1GΩ @ 500 V dc | ● | ● | ● | ● | ● |
| Dielectric strength | 1 kV dc | ● | ● | ● | ● | ● |
| Rated current: | | 3 A | 10 A | 3 A | 3 A | 3 A |
| Rated switch contact current: | | 0.25 A @ 12 V | N/A | 0.5 A @ 50 V | 0.5 A @ 50 V | 0.5 A @ 50 V |

Mechanical

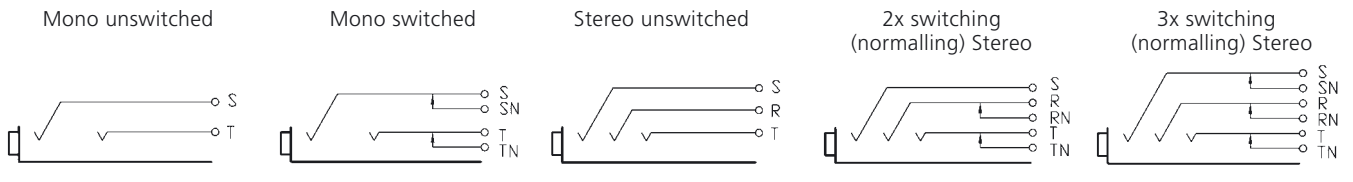
| | | | | | | |
|--|-------------------|------------------------------|---|-----------------|-----------------|-----------------|
| Lifetime | > 10'000 cycles | ● | ● | ● | ● | ● |
| Insertion / withdrawal force: | | < 10 N / > 8 N | < 20 N / < 20N | < 20 N / > 10 N | < 20 N / > 10 N | < 20 N / > 10 N |
| Cap opening torque: | | 25 N cm / 9.84 N in | - | - | - | - |
| Locking force: | | - | > 80 N | - | - | - |
| Wire size: | | - | 1 mm ² / 18 AWG [Ⓞ] | - | - | - |
| Cable O.D. (FC6 only) | | - | 3.5 - 8.0 mm | - | - | - |
| Solderability complies with IEC 68-2-20: | | ● | ● | ● | ● | ● |
| Standard Compatibility: | | | | | | |
| EIA RS 453 + IEC 60603-11 | | NJ*FD | ● | ● | ● | ● |
| B-GAUGE BPO 316, MIL-J-641/3 | | NJ*TB | - | - | - | - |
| Panel thickness: | | 1.2 - 1.5 mm [0.047 - 0.06"] | - | - | - | - |
| | - Full nose type: | - | - | < 3.0 mm | < 3.0 mm | - |
| | - Half nose type: | - | - | < 1.0 mm | < 1.0 mm | - |
| | - Chrome nose: | - | - | < 4.7 mm | - | - |
| | - NSJ*HL: | - | - | - | - | 1.0 - 1.6 mm |
| | - NSJ*HC: | - | - | - | - | > 1.0 mm |

Material

| | | | | | | |
|---------------------|----------------|---------------|--|---------------|-------------------------|-------------------|
| Shell / Handle: | | PA 6.6 30% GR | ZnAl4Cu1 Ni plated or black coated | PA 6.6 15% GR | PA 6 15% GR | PA 6 15% GR |
| | - FP6P: | - | PA 6.6 30% GR | - | - | - |
| Insulation: | | - | PA 6.6 30% GR | - | - | - |
| Contacts: | | CuSn6 | CuBe2/CuZn37 (ground) | Ni-Silver | CuSn6 | CuSn6 |
| Contact surface: | | 0.2 μm Au | 2 μm Ag | - | gal 2 μm Ag / 0.2 μm Au | gal 2 μm Ag |
| Cap / Nut / Washer: | | POM | - | PA 6.6 15% GR | PA 6.6 15% GR | PA 6.6 15% GR |
| Ring Nut: | | - | - | - | Brass (Ni plated) | Brass (Ni plated) |
| Chuck: | | - | POM | - | - | - |
| Bushing: | | - | PA 6.6 15% GR + PUR | - | - | - |
| Temperature range: | -25°C to +70°C | ● | ● | ● | ● | ● |

Ⓞ... max. for soldering tag

Circuits:



S p e c D r a w i n g s a r e a v a i l a b l e

Ordering Information

| Part Number | Shell | Contacts | Terminations | Standards Compatibility | Remarks |
|-------------|-------|----------|--------------|----------------------------|---------|
|-------------|-------|----------|--------------|----------------------------|---------|

Slim Jack

PCB Mount Sockets - Switched

| | | | | | |
|-------------|-----------------|--------|--------------------------|-------------------------|--|
| NRJ3HF-1 | Black/Plastic | Silver | Horizontal PCB soldering | IEC 60603-11/EIA RS 453 | Mono, full threaded nose, chassis ground contact |
| NRJ4HF | ● | ● | ● | ● | Mono, full threaded nose |
| NRJ4HF-1 | ● | ● | ● | ● | Mono, full threaded nose, chassis ground contact |
| NRJ6HF | ● | ● | ● | ● | Stereo, full threaded nose |
| NRJ6HF-1 | ● | ● | ● | ● | Stereo, full threaded nose, chassis ground contact |
| NRJ4HH | ● | ● | ● | ● | Mono, half threaded nose |
| NRJ4HH-1 | ● | ● | ● | ● | Mono, half threaded nose, chassis ground contact |
| NRJ6HH | ● | ● | ● | ● | Stereo, half threaded nose |
| NRJ6HH-1 | ● | ● | ● | ● | Stereo, half threaded nose, chassis ground contact |
| NRJ6HF-AU | ● | Gold | ● | ● | Stereo, full threaded nose, gold plated contacts |
| NRJ6HF-1-AU | ● | Gold | ● | ● | Stereo, full threaded nose, chassis ground contact, gold plated contacts |
| NRJ6HH-AU | ● | ● | ● | ● | Stereo, half threaded nose, gold plated contacts |
| NRJ-NUT-B | ● | - | - | - | Hexagonal black plastic nut |
| NRJ-NUT-R | Red/Plastic | - | - | - | Hexagonal red plastic nut |
| NRJ-NUT-MK | Metal/Ni plated | - | - | - | Metal ring nut, knurled |
| NRJ-NUT-MS | Metal/Ni plated | - | - | - | Metal ring nut |

PCB Mount Sockets - Switched with Metal Nose

| | | | | | |
|-------------|---------------|--------|--------------------------|-------------------------|---|
| NRJ4HM-1 | Black/Plastic | Silver | Horizontal PCB soldering | IEC 60603-11/EIA RS 453 | Mono, metal threaded nose |
| NRJ4HM-1-AU | ● | Gold | ● | ● | Mono, metal threaded nose, gold plated contacts |
| NRJ6HM-1 | ● | Silver | ● | ● | Stereo, metal threaded nose |
| NRJ6HM-1-AU | ● | Gold | ● | ● | Stereo, metal threaded nose, gold plated contacts |
| NRJ-NUT-MN | Metal | - | - | - | Hexagonal metal nut (for metal nose jack only) |

Stacking Jack

| | | | | | |
|-----------|--------------------|--------|--------------------------|-------------------------|------------------------|
| NSJ8HL | Polyamid PA 6.6 GR | Silver | Horizontal PCB soldering | IEC 60603-11/EIA RS 453 | Mono, quick fix nose |
| NSJ12HL | ● | ● | ● | ● | Stereo, quick fix nose |
| NSJ8HC | ● | ● | ● | ● | Mono, full nose |
| NSJ12HC | ● | ● | ● | ● | Stereo, full nose |
| NSJ12HF-1 | ● | ● | ● | ● | Full threaded nose |
| NSJ12HH-1 | ● | ● | ● | ● | Half threaded nose |
| NSJ-NUT-B | Black/Plastic | - | - | - | Quick fix nut |

All Slim jacks are for PCB mount only.

Mounting nuts must be ordered separately, except for Stacking Jack type NSJ8HL and NSJ12HL.

Ordering Key:

NRJ*H NEUTRIK Jack Horizontal

H half threaded nose

F full threaded nose

L quick fix nose

M metal threaded nose

C plane nose

-1 chassis ground contact

* number of contacts:

2 mono unswitched

4 mono switched

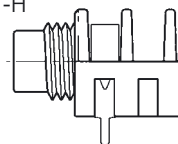
6 stereo switched

8 mono stacking jack

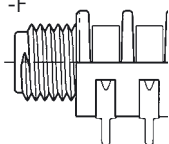
12 stereo stacking jack

Nose:

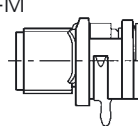
-H



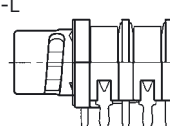
-F



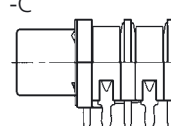
-M



-L



-C



Ordering Information

| Part Number | Shell | Contacts | Terminations | Standards Compatibility | Remarks |
|-------------|-------|----------|--------------|----------------------------|---------|
|-------------|-------|----------|--------------|----------------------------|---------|

1/4" Locking Jack

| | | | | | |
|-------------|---------------|--------|----------------|-------------------------|-----------------|
| NJ3FC6-BAG | Black | Silver | Wire soldering | IEC 60603-11/EIA RS 453 | Cable Jack |
| NJ3FP6C | Nickel | ● | ● | ● | Chassis Jack |
| NJ3FP6C-B | Black | Gold | ● | ● | ● |
| NJ3FP6C-BAG | Black | Silver | ● | ● | ● |
| NJ3FP6F-P | Nickel | ● | ● | ● | ● |
| NJ3FP6P-BAG | Black/Plastic | ● | ● | ● | Plastic Chassis |

1/4" Vertical Jack

| | | | | | |
|---------|---------------|------|------------------------|----------------------------|---|
| NJ2FD-V | Black/Plastic | Gold | Vertical PCB soldering | IEC 60603-11/EIA RS 453 | Non-switching Mono Jack (T/S) |
| NJ3FD-V | ● | ● | ● | ● | Non-switching Stereo Jack (T/R/S) |
| NJ5FD-V | ● | ● | ● | ● | 2 x switching (normalling) Stereo jack (T/TN/R/RN/S) |
| NJ6FD-V | ● | ● | ● | ● | 3 x switching (normalling) Stereo jack (T/TN/R/RN/S/SN) |
| NJ5TB-V | ● | ● | ● | B-Gauge BPO316 Mil-J-641/3 | 2 x switching (normalling) Stereo jack (T/TN/R/RN/S) |
| NJ6TB-V | ● | ● | ● | B-Gauge BPO316 Mil-J-641/3 | 3 x switching (normalling) Stereo jack (T/TN/R/RN/S/SN) |

M Jack

| | | | | | |
|----------|---------------|--------|--------------------------|-------------------------|---|
| NMJ2HF-S | Black/Plastic | Silver | Horizontal PCB soldering | IEC 60603-11/EIA RS 453 | Mono, unswitched, full threaded nose, solder tags |
| NMJ3HF-S | ● | ● | ● | ● | Mono, switched, full threaded nose, solder tags |
| NMJ4HF-S | ● | ● | ● | ● | Mono, switched, full threaded nose, solder tags |
| NMJ2HC-S | ● | ● | ● | ● | Mono, unswitched, Chrome ferrule, solder tags |
| NMJ4HC-S | ● | ● | ● | ● | Mono, switched, Chrome ferrule, solder tags |
| NMJ4HFD2 | ● | ● | ● | ● | Mono, switched, full threaded nose, PCB mount |
| NMJ4HFD3 | ● | ● | ● | ● | Mono, switched, full threaded nose, offset PCB mount |
| NMJ4HCD2 | ● | ● | ● | ● | Mono, switched, Chrome ferrule, PCB mount, |
| NMJ4HHD2 | ● | ● | ● | ● | Mono, switched, half threaded nose, PCB mount, without nut and washer |
| NMJ6HF-S | ● | ● | ● | ● | Stereo, switched, full threaded nose, solder tags |
| NMJ6HC-S | ● | ● | ● | ● | Stereo, switched, Chrome ferrule, solder tags |
| NMJ6HCD2 | ● | ● | ● | ● | Stereo, switched, Chrome ferrule, solder tags |
| NMJ6HHD2 | ● | ● | ● | ● | Stereo, switched, half threaded nose, PCB mount, without nut and washer |
| NMJ6HFD2 | ● | ● | ● | ● | Stereo, switched, full threaded nose, PCB mount |
| NMJ6HFD3 | ● | ● | ● | ● | Stereo, switched, full threaded nose, offset PCB mount |
| NMJ6HCD3 | ● | ● | ● | ● | Stereo, switched, Chrome ferrule, offset PCB mount |
| NMJ6HFD4 | ● | ● | ● | ● | Stereo, switched, full threaded nose, Rear drop PCB mount |

Full threaded and Chrome nose M-Jacks are supplied with fixing nut and washers.
Mounting hardware for half threaded nose must be ordered separately.

Ordering Key:

NMJ*H NEUTRIK M Jack Horizontal
 H half threaded nose
 F fully threaded nose
 C chrome nose
 -S solder tag
 D2 PCB pins 02
 D3 PCB pins 03
 D4 PCB pins 04

* number of contacts:
 2 mono unswitched
 3 stereo unswitched
 4 mono switched
 5 stereo switched (T/S)
 6 stereo switched (T/R/S)

