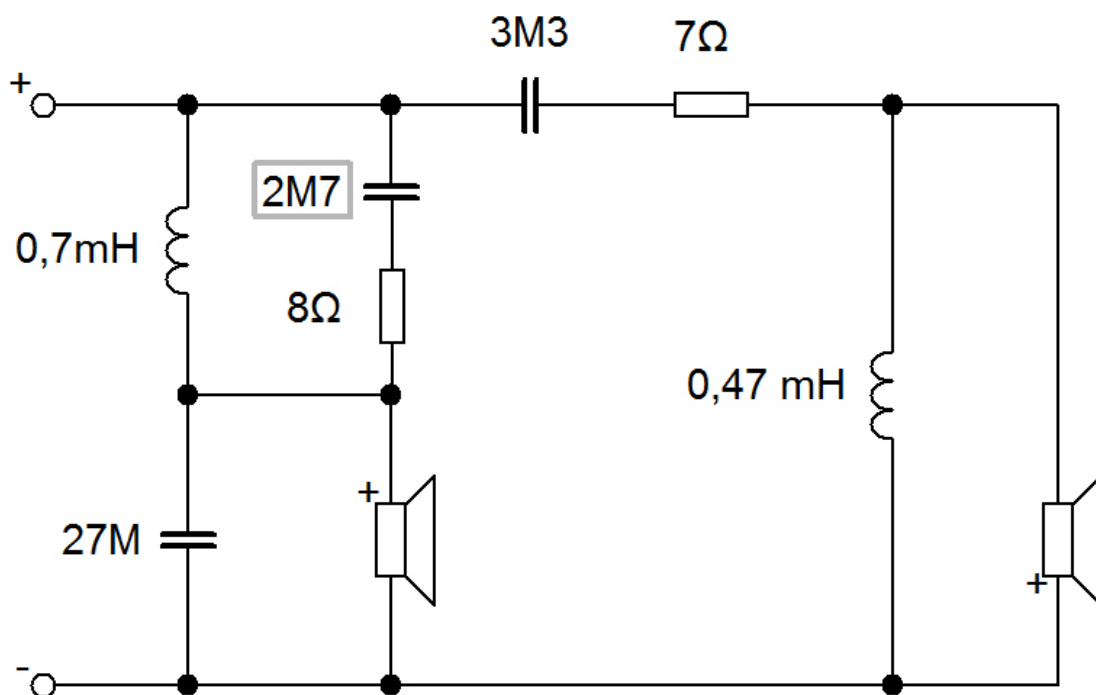


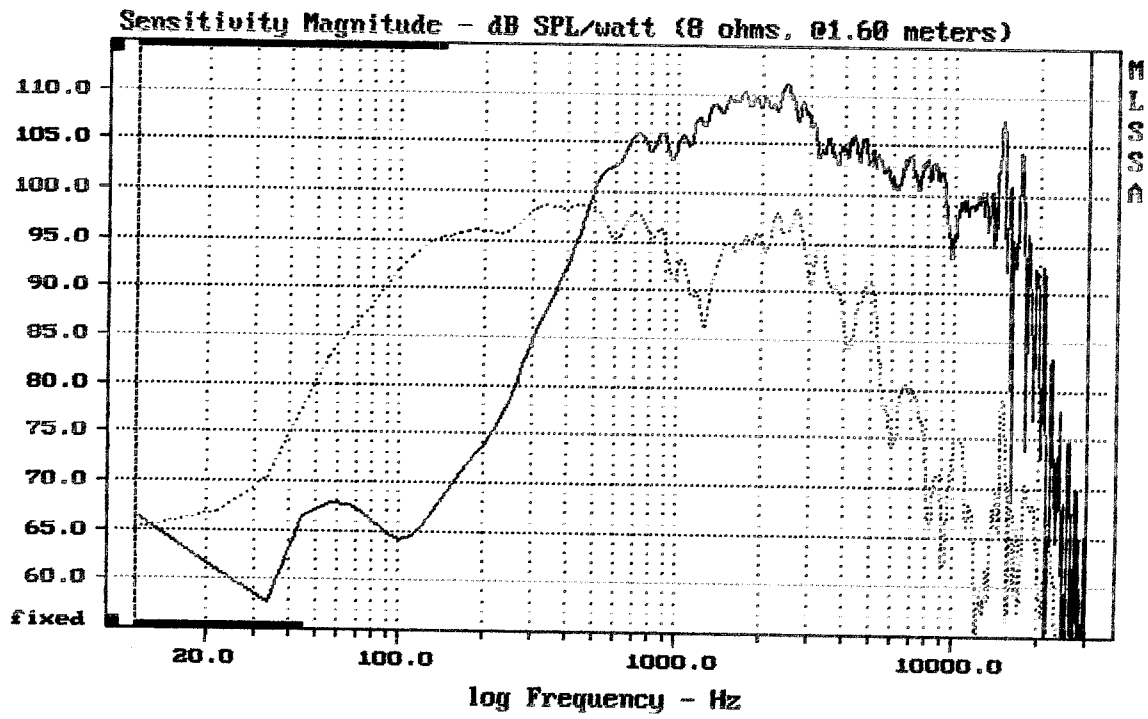
Osazení: B&C Speakers 12FCX76 8/ohm

- B&C Speakers 12FCX76 8/ohm

<http://www.prodance.cz/12fcx76-8ohm.html>

Schéma výhybky:





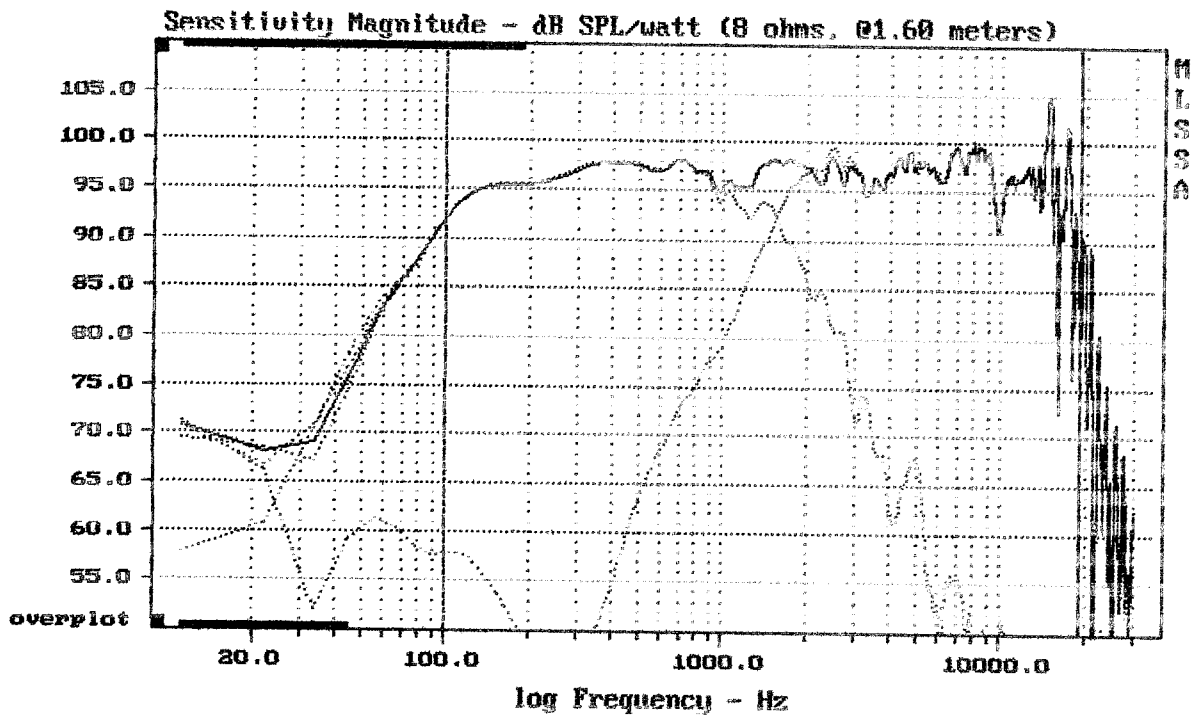

---

CURSOR: dy = -20.5197 x = 30007.1014 (2704)

---

12FCX76 + skelet NDM12x

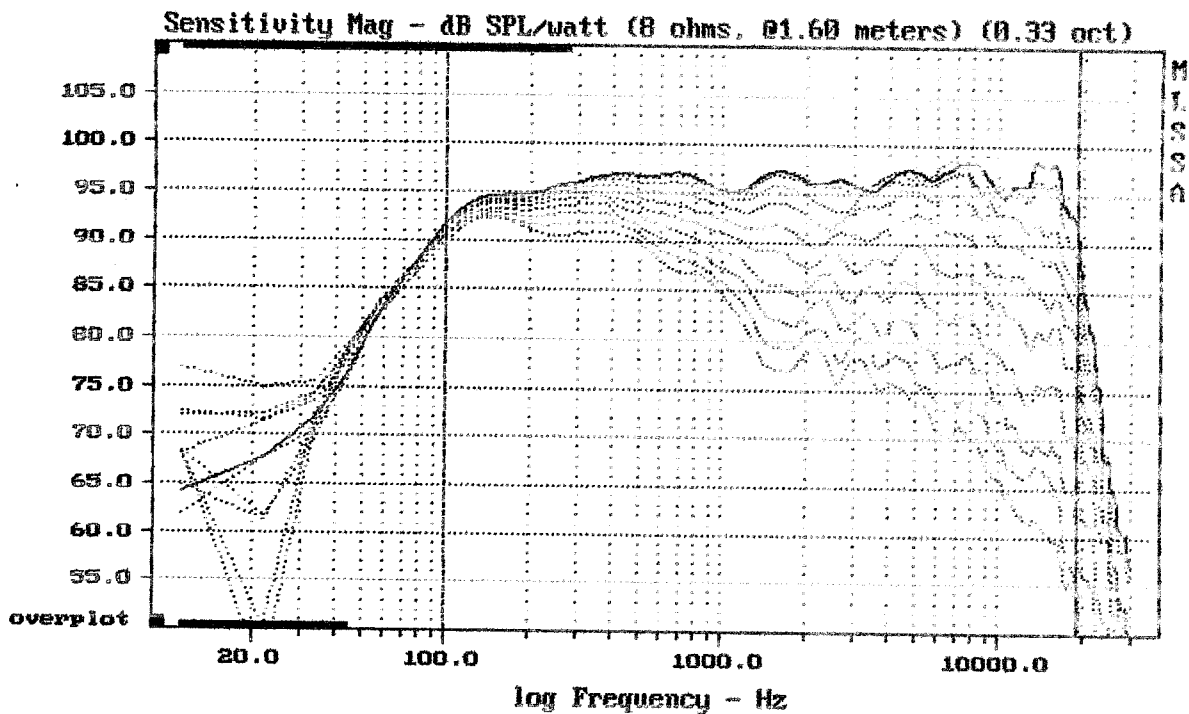
MLSSA: Frequency Domain



Level (100:19254 Hz) = 96.89 dB SPL/watt (8 ohms, @1.60 meters)

12FCX76 + skelet NDM12x

MLSSA: Frequency Domain

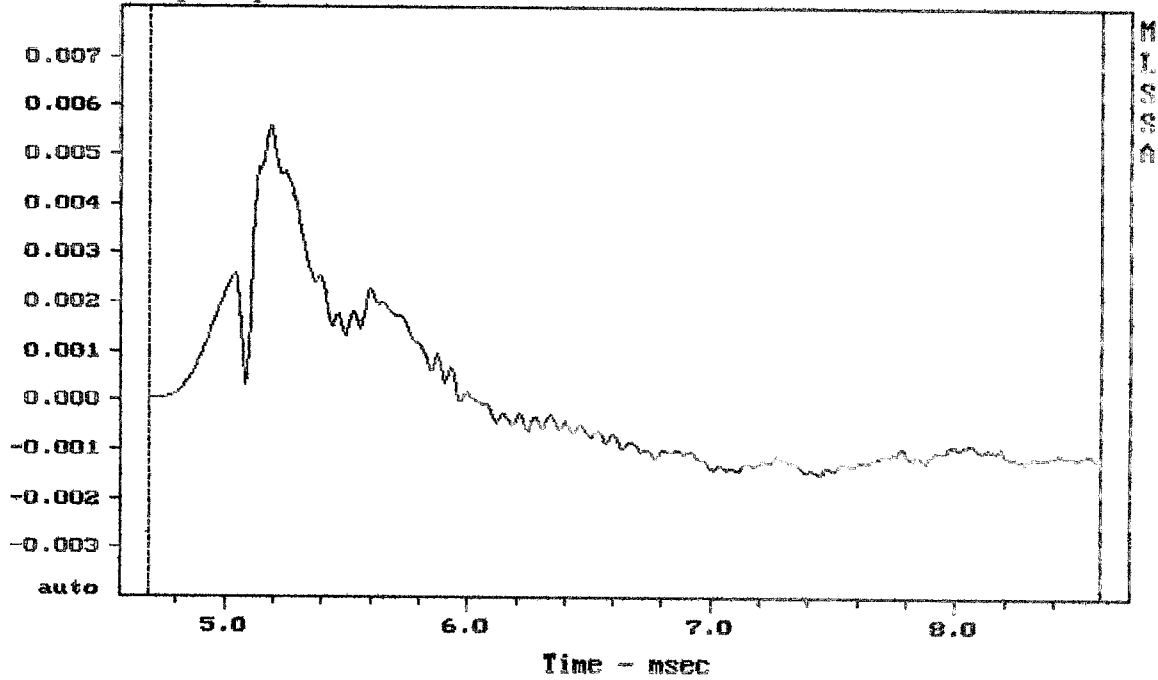


Overlay Compare: dev= +27/-9.7, std= 0.4, avg= -29

12FCX76 + skelet NDM12x

MLSSA: Frequency Domain

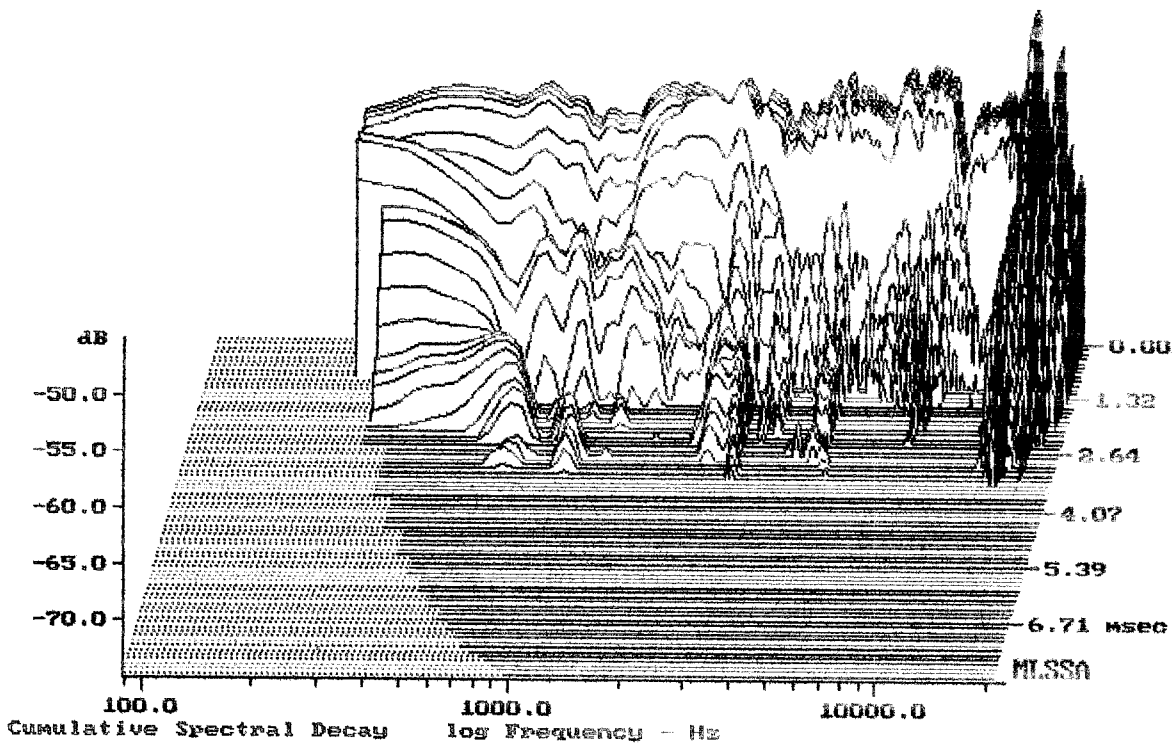
Step Response - volts



CURSOR: y = -0.00113902 x = 8.5910 (781)

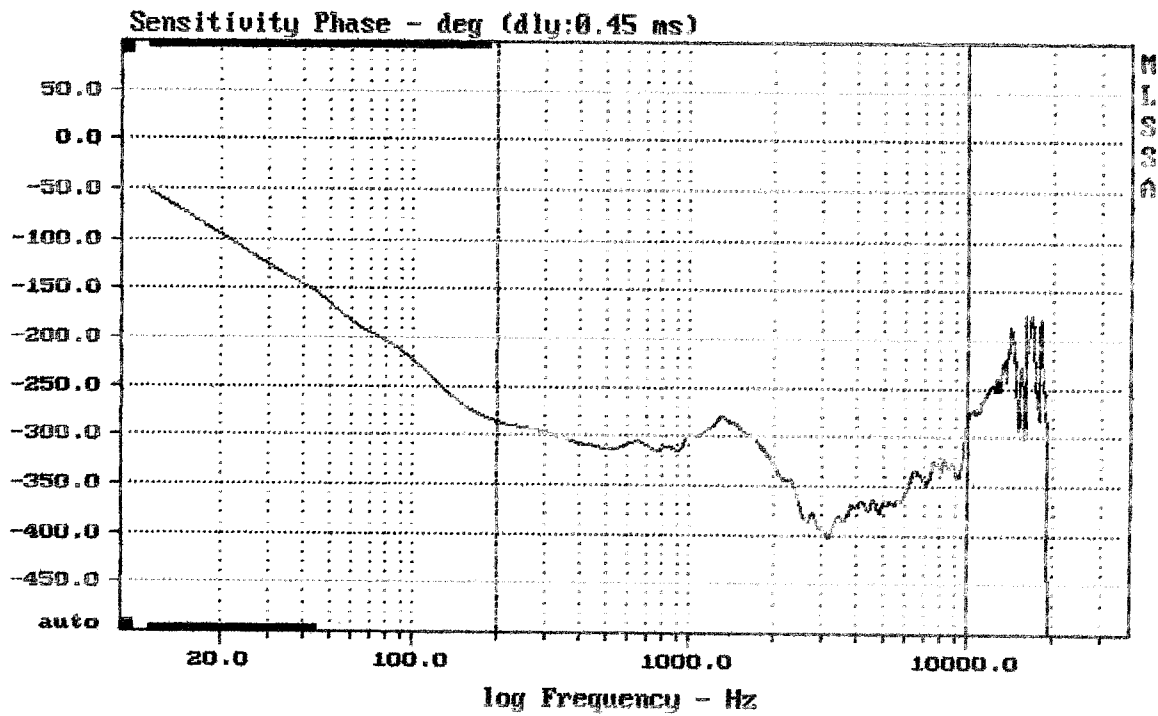
12FCX76 + skelet NDM12x

MLSSA: Time Domain



-73.76 dB, 2797 Hz (63), 3.300 msec (31)

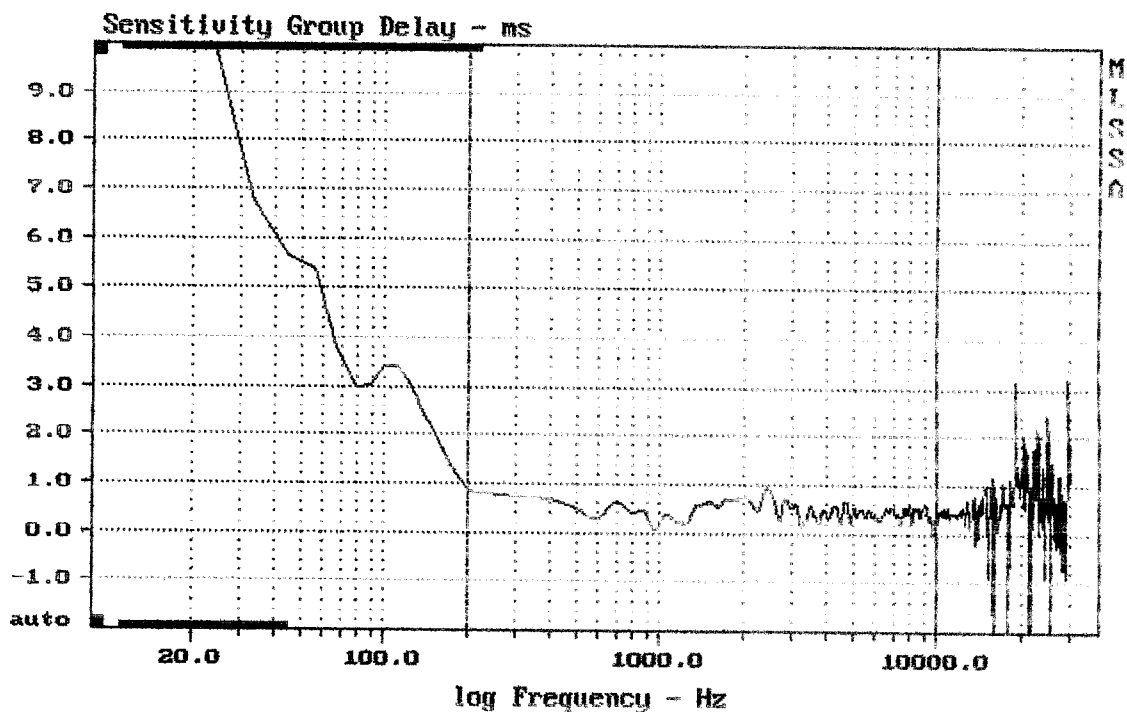
DTTO



mean: -342.5, rms: 343.7, std: 29.42, max: -200, min: -402.7

12FCX76 + skelet NDM12x

MLSSA: Frequency Domain



mean: 0.4499, rms: 0.4788, std: 0.1637, max: 0.9424, min: -0.02949

12FCX76 + skelet NDM12x

MLSSA: Frequency Domain