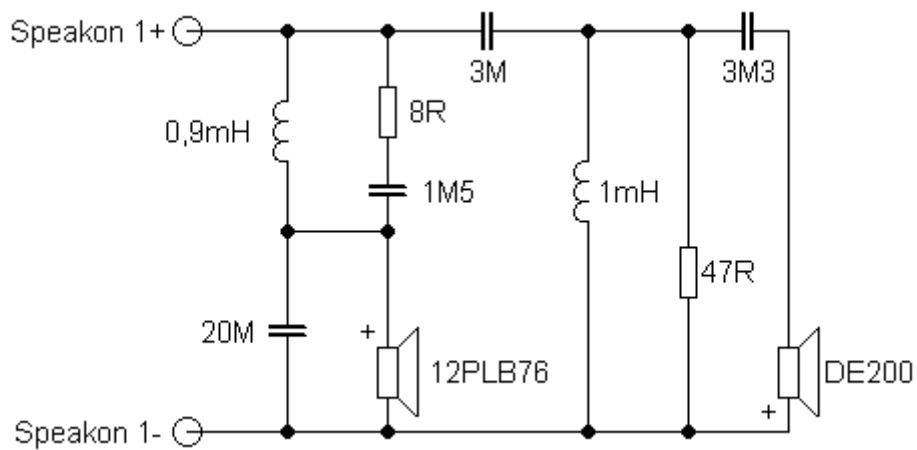


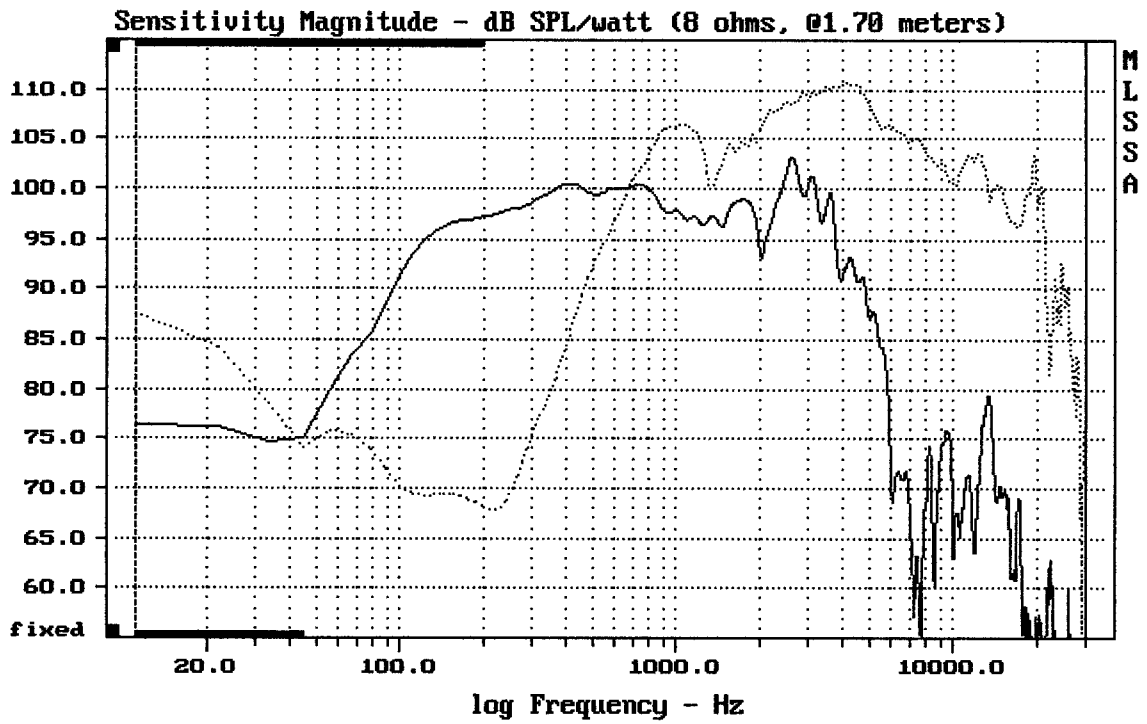
## Sestava B&C Speakers 12PLB76 + DE200 + Megaton A70/1260

### Osazení:

- B&C Speakers 12PLB76 8/Ohm  
<http://eshop.prodance.cz/DetailPage.asp?DPG=82746>
- B&C Speakers DE200 8/Ohm  
<http://eshop.prodance.cz/DetailPage.asp?DPG=82302>
- Megaton A70/1260  
<http://eshop.prodance.cz/DetailPage.asp?DPG=87810>

### Schéma výhybky:

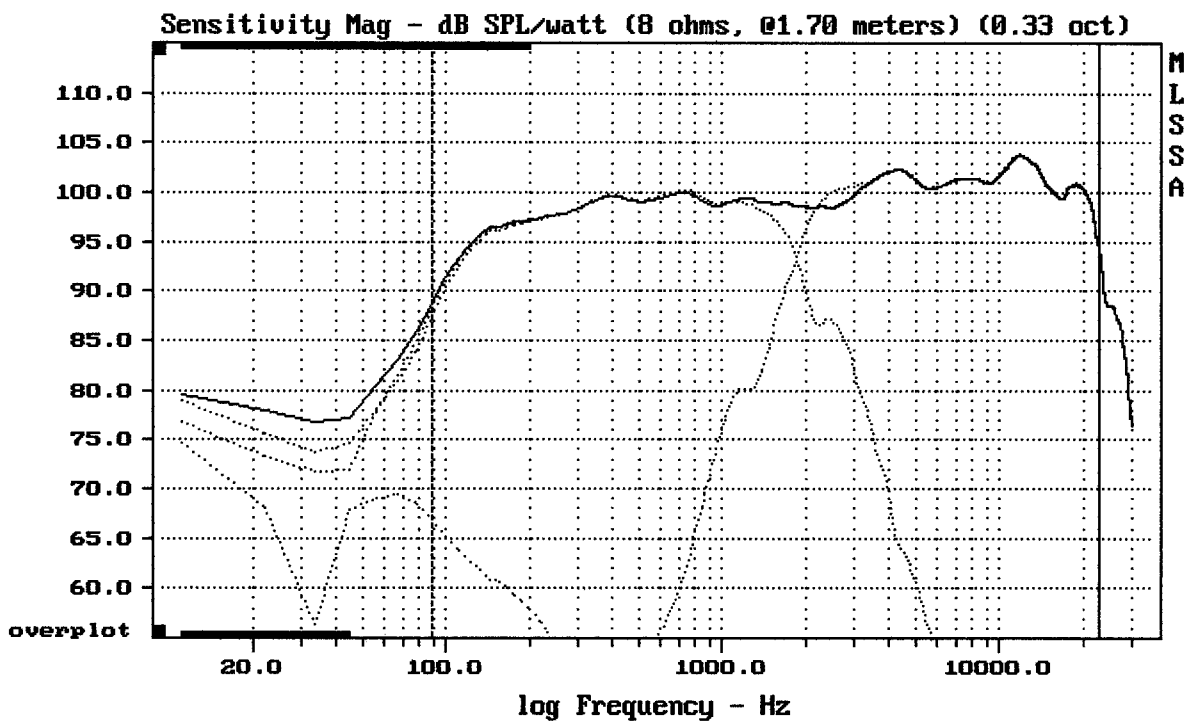




CURSOR:  $\Delta y = 31.9673$   $x = 30007.1014$  (2704)

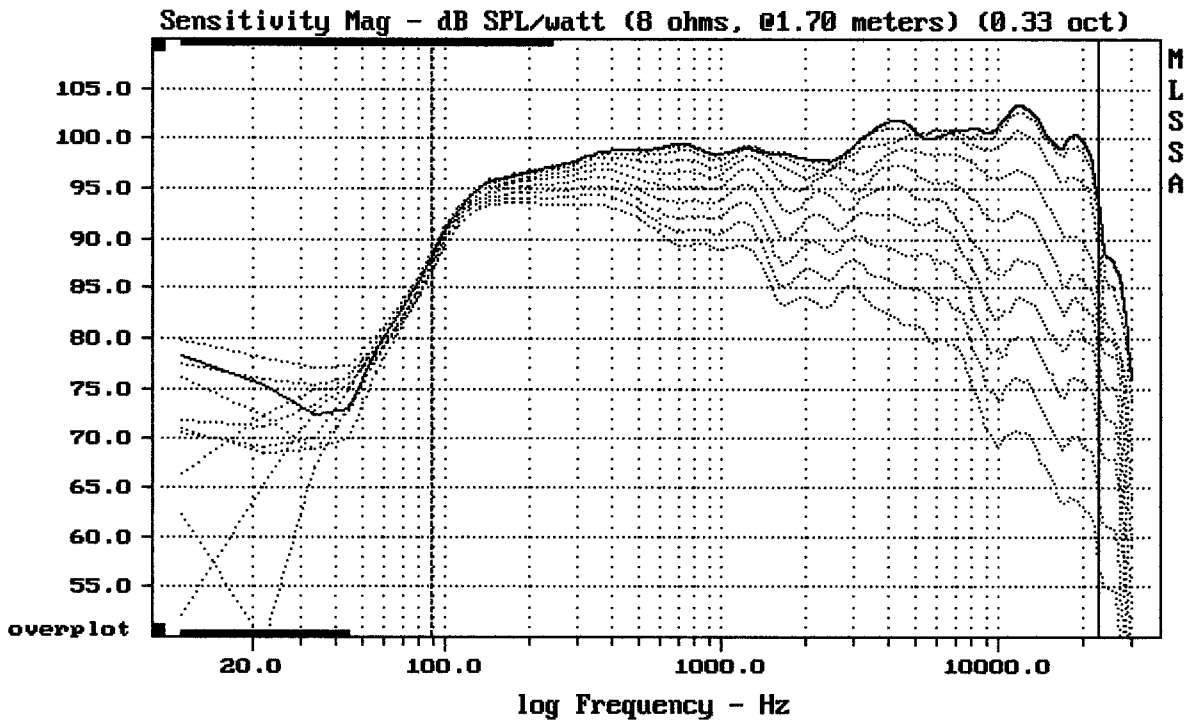
12PLB76 + DE200 + A70/1260

MLSSA: Frequency Domain



Level (89:23005 Hz) = 99.63 dB SPL/watt (8 ohms, @1.70 meters) (0.33 oct)

12PLB76 + DE200 + A70/1260



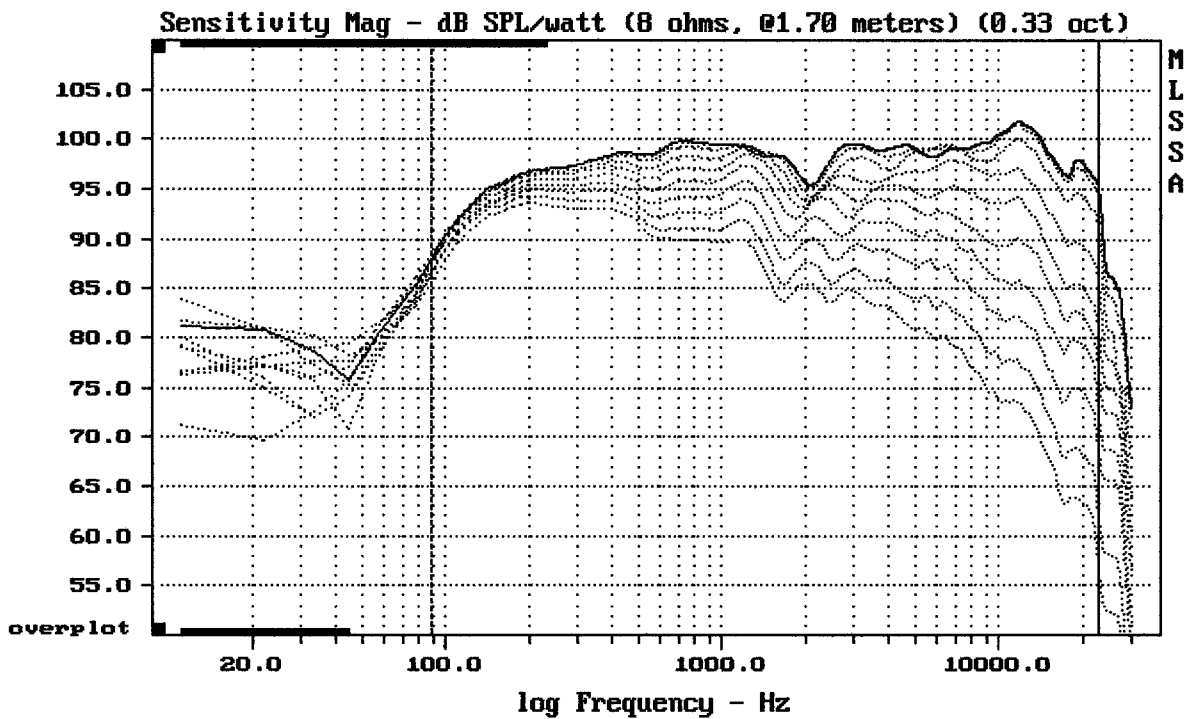

---

Overlay Compare: dev= +27/-8.9, std= 8.9, avg= -28

---

12PLB76 + DE200 + A70/1260

MLSSA: Frequency Domain

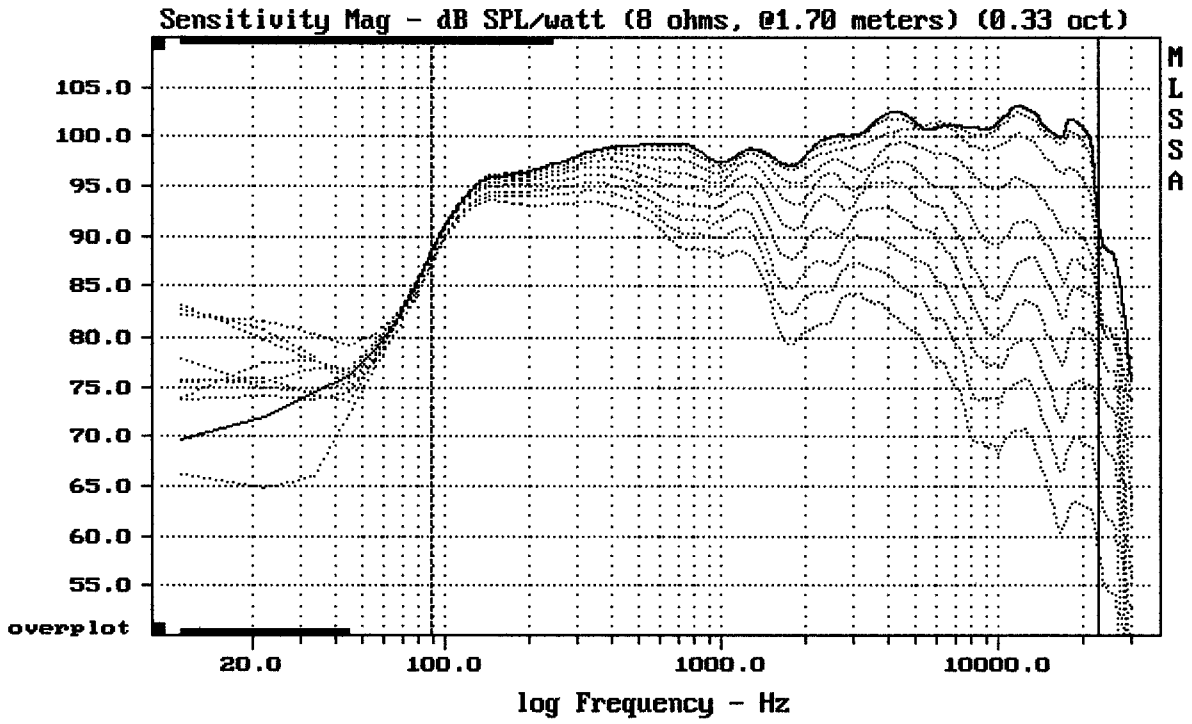



---

Overlay Compare: dev= +23/-13, std= 8.3, avg= -26

---

12PLB76 + DE200 + A70/1260

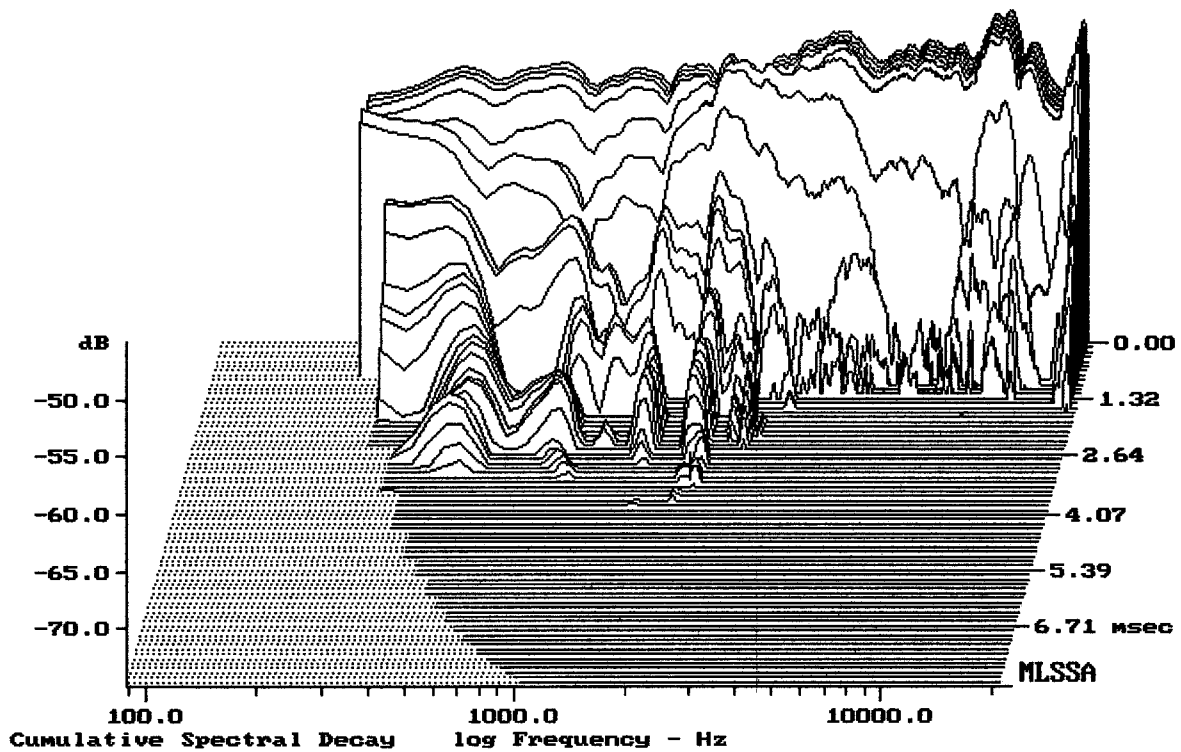


Overlay Compare: dev= +28/-10, std= 8.9, avg= -30

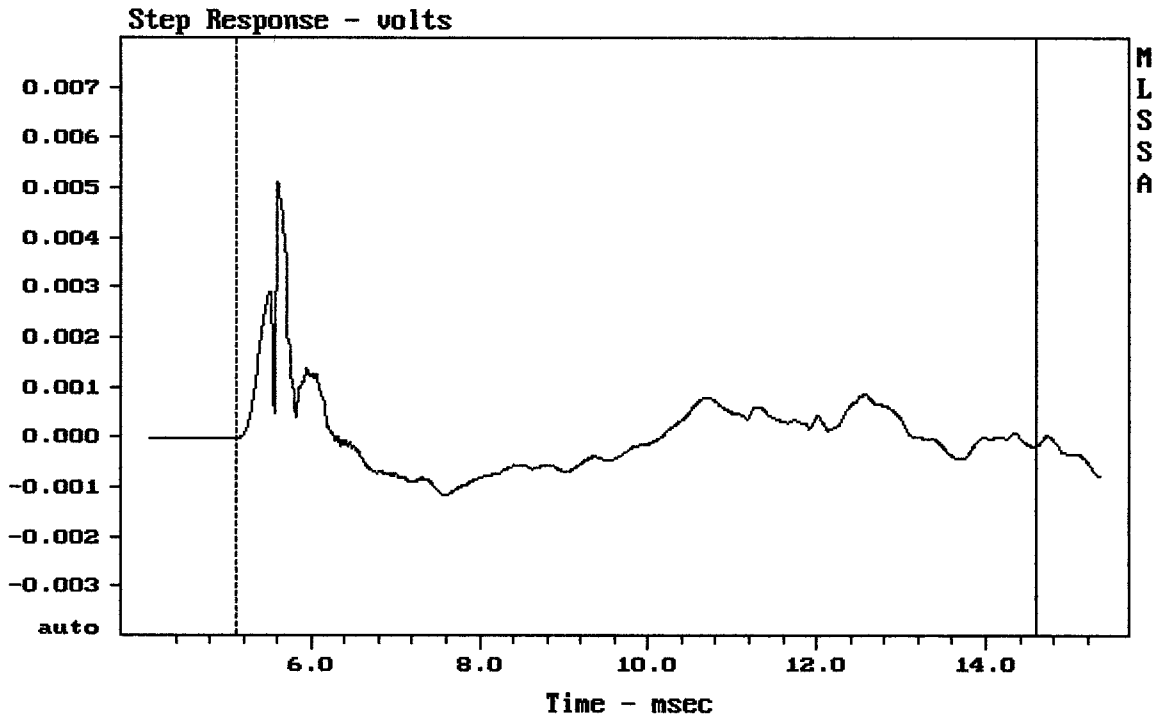
12PLB76 + DE200 + A70/1260

nad osou 4"

MLSSA: Frequency Domain



-74.02 dB, 2086 Hz (47), 3.190 msec (30)



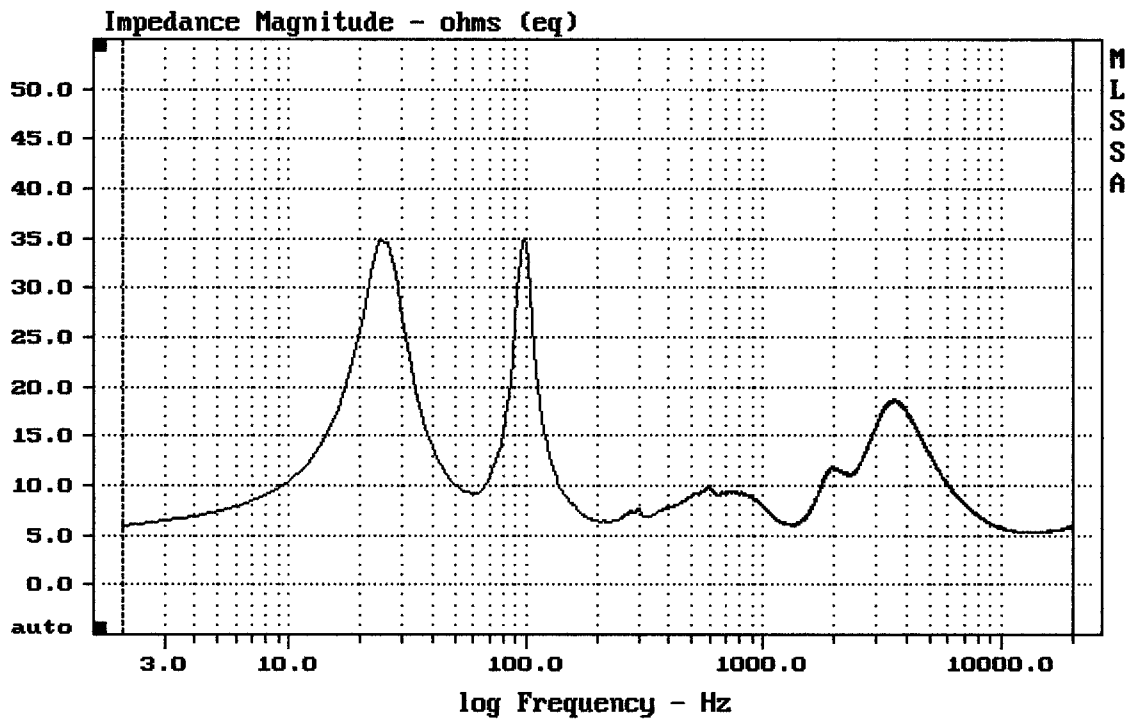

---

mean: 5.871e-005, rms: 0.0008445, std: 0.0008424, max: 0.005105, min: -0.001153

---

12PLB76 + DE200 + A70/1260

MLSSA: Time Domain




---

mean: 7.95, rms: 8.812, std: 3.801, max: 34.92, min: 5.269

---

12PLB76 + DE200 + A70/1260